

# Rangely Weber Sand Unit

## Union Pacific 70-32 Current Wellbore

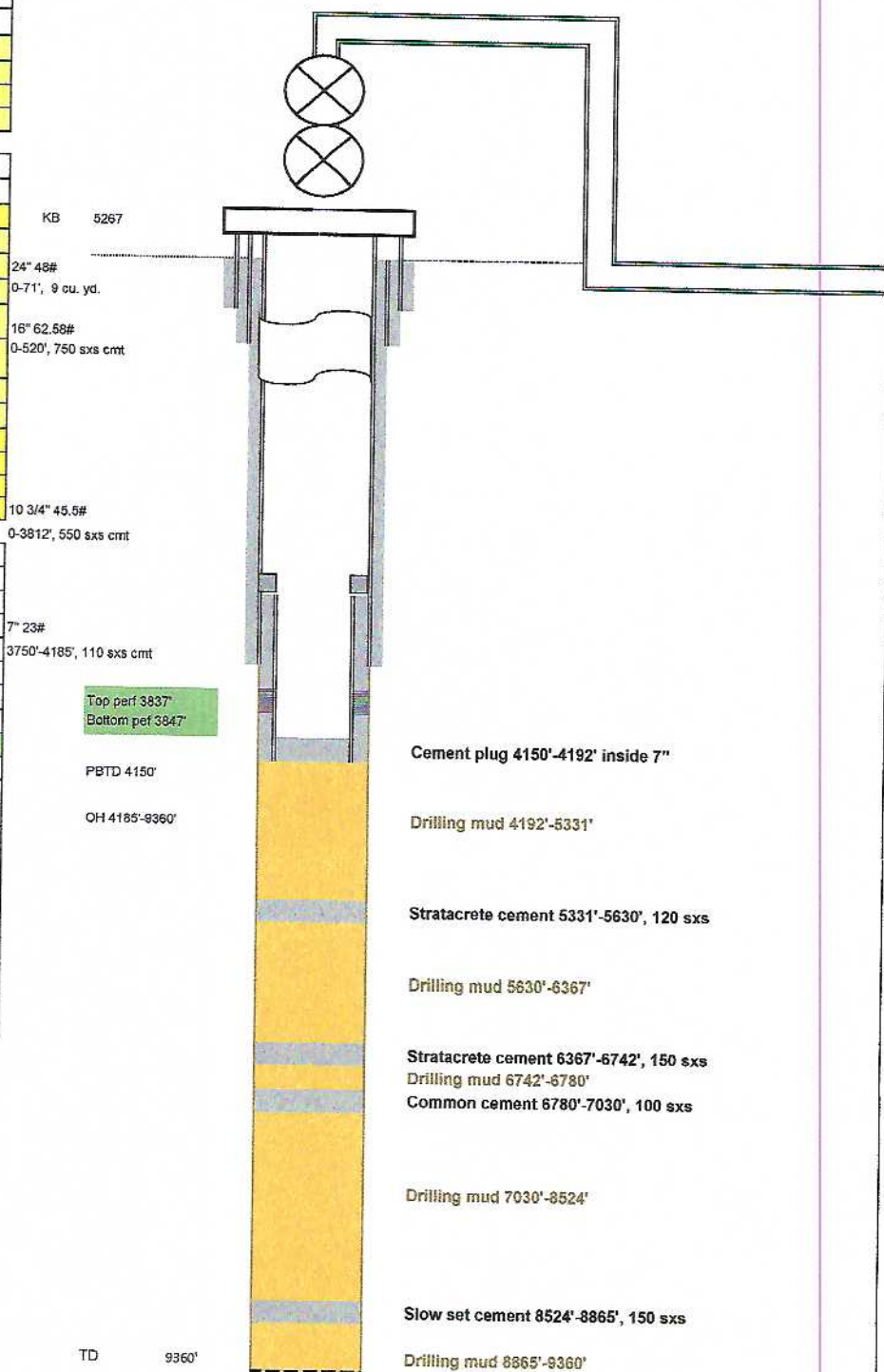
### Well Details:

STATE & CO	CO - Rio Blanco
TWNS & RNG	2N & 102W
SECTION	32
API	05-103-05553
CHEVNO	

### Casing Details:

Type	Depth
KB	5267
24" 48#	0-71', 9 cu. yd.
16" 62.58#	0-520', 750 sxs cmt
10 3/4" 45.5#	0-3812', 550 sxs cmt
7" 23#	3750'-4185', 110 sxs cmt
Top Perf	3837
Bot Perf	3847
PSTD	4150
TD	9360

Formation	Top Depth
Mancos	0
Niobrara	1730
Frontier	2620
Mowry	2685
Dakota	2986
Morrison	3112
Curtis	3780
Entrada	3836
Camel	3990
Navajo	4047
Chinle	4650
Shinarump	4770
Moenkopi	4840
Weber	5500
Morgan	6650
Madison	8092
Devonian - Chaffee	8756
Lower Ordovician	8950
Upper Cambrian	9130
Sawatch	9303



Note 05-07-1954 - Drilling completed.

1- 05-21-1954 - Wellbore P&A'd.

2- entered to 4192' with 9"

3- abandon with 7" bridge

4.-