

CONFLUENCE RESOURCES



Location:	COLORADO	Slot:	SLOT#01 Walla 5-15-2L (861°FSL & 705°FEL,SEC.31)
Field:	WELD COUNTY (NAD83, TRUE NORTH)	Well:	Walla 5-15-2L
Facility:	SEC.31-T01N-R65W	Wellbore:	Walla 5-15-2L PWB
Plot reference wellpath is Walla 5-15-2L PWP Rev.A0		Grid System: NAD83 / Lambert Colorado SP, Northern Zone (501), US feet	
True vertical depths are referenced to RIG (RT)		North Reference: True north	
Reference wellpath measured depths are referenced to RIG (RT)		Scale: True distance	
RIG (RT) to Mean Sea Level: 5059.5 feet		Coordinates are in feet referenced to Slot	
Mean Sea Level to Mud line (At Slot: SLOT#01 Walla 5-15-2L (861°FSL & 705°FEL,SEC.31)): 0 feet		Depths are in feet	
Offset wellpath MDs are referenced to each path's default MD datum		Created by paintset on 2020-05-26; Database: WLL_Denver	

Location Information							
Facility Name		Grid East (US ft)	Grid North (US ft)	Latitude	Longitude		
SEC.31-T01N-R65W		3224163.559	1244910.999	40°00'10.4040"N	104°41'59.3160"W		
Slot	Local N (ft)	Local E (ft)	Grid East (US ft)	Grid North (US ft)	Latitude	Longitude	
SLOT#01 Walla 5-15-2L (861°FSL & 705°FEL,SEC.31)	0.00	0.00	3224163.559	1244910.999	40°00'10.4040"N	104°41'59.3160"W	
RIG (RT) to Mud line (At Slot: SLOT#01 Walla 5-15-2L (861°FSL & 705°FEL,SEC.31))				5059.58			
Mean Sea Level to Mud line (At Slot: SLOT#01 Walla 5-15-2L (861°FSL & 705°FEL,SEC.31))				0ft			
RIG (RT) to Mean Sea Level				5059.58			

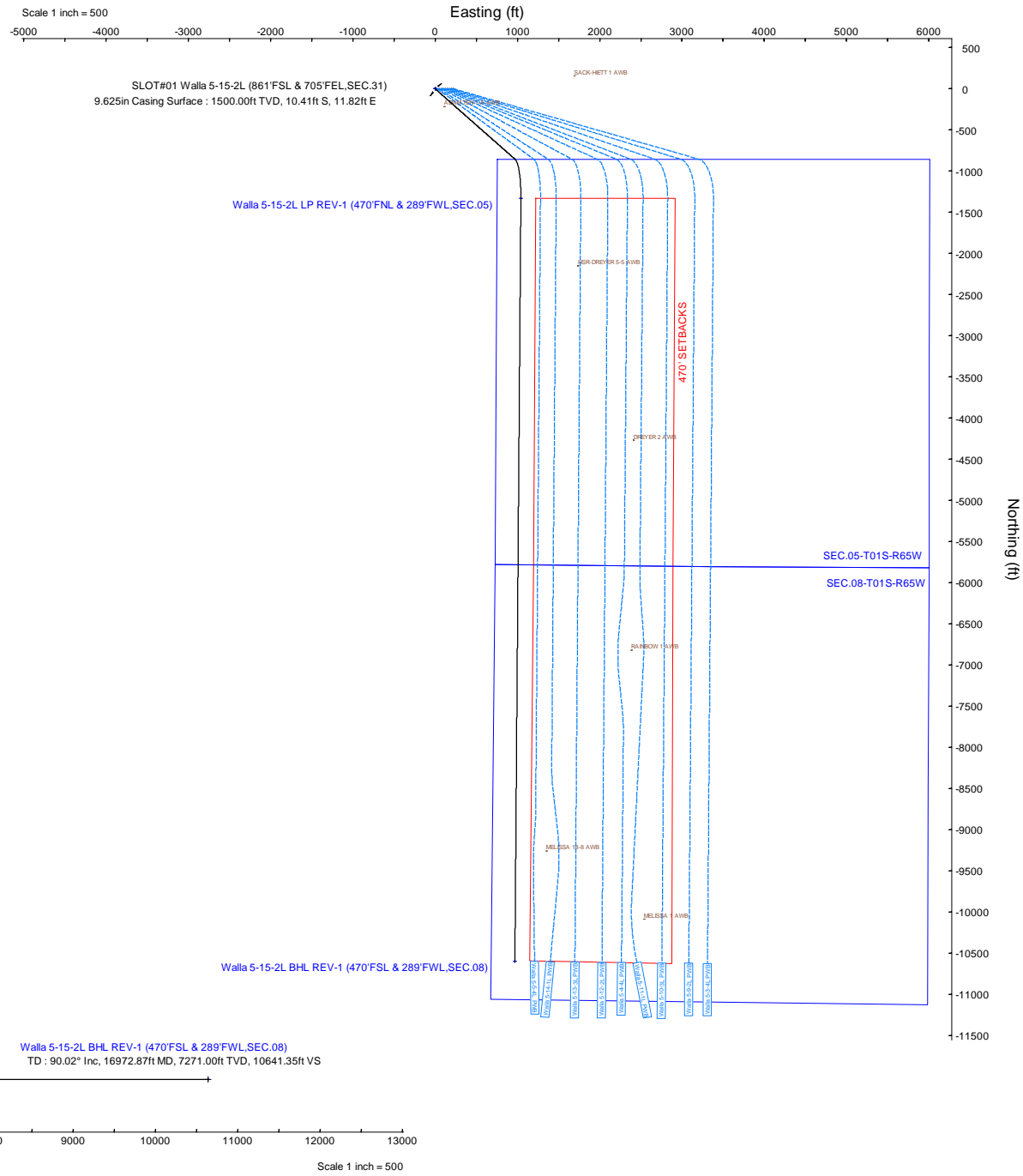
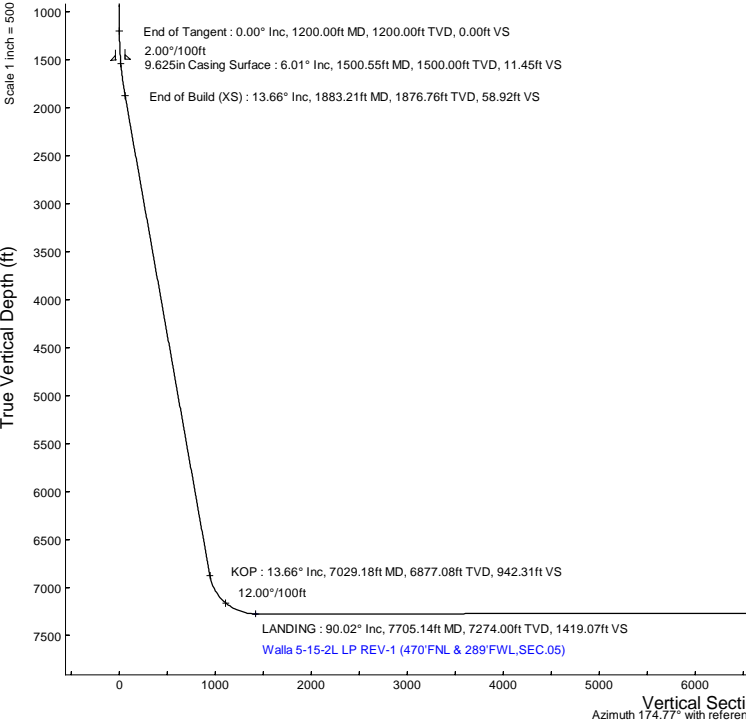
Survey Program							
Start MD (ft)	End MD (ft)	Tool	Model		Log Name/Comment		Wellbore
20.50	1500.55	BH NavTrak (2019)	BH NavTrak (2019) (Standard)				Walla 5-15-2L PWB
1500.55	16972.87	BH AutoTrak Curve/Express (2019)	BH AutoTrak Curve/Express (2019) (Short spacing)				Walla 5-15-2L PWB

Targets								
Name	MD (ft)	TVD (ft)	Local N (ft)	Local E (ft)	Grid East (US ft)	Grid North (US ft)	Latitude	Longitude
SEC.05-T01S-R65W	N/A	0.00	0.00	0.00	3224163.56	1244910.00	40°00'10.4040"N	104°41'59.3160"W
SEC.08-T01S-R65W	N/A	0.00	0.00	0.00	3224163.56	1244910.00	40°00'10.4040"N	104°41'59.3160"W
Walla 5-15-2L BHL REV-1 (470°FSL & 289°FSL,SEC.08)	16972.87	7271.00	-10597.08	969.74	3225228.85	1234323.48	39°58'25.6800"N	104°41'46.8600"W
470° SETBACKS	N/A	7274.00	0.00	0.00	3224163.56	1244910.00	40°00'10.4040"N	104°41'59.3160"W
Walla 5-15-2L LP REV-1 (470°FNL & 289°FSL,SEC.05)	7705.14	7274.00	-11329.63	1042.22	3225217.70	1243590.88	39°59'57.2640"N	104°41'45.9240"W

Hole and Casing Sections										
Name	Start MD (ft)	End MD (ft)	Interval (ft)	Start TVD (ft)	End TVD (ft)	Start Local N (ft)	Start Local E (ft)	End Local N (ft)	End Local E (ft)	Wellbore
9.625in Casing Surface	20.50	1500.55	1480.05	20.50	1500.00	0.00	0.00	-10.41	11.82	Walla 5-15-2L PWB

Well Profile Data								
Design Comment	MD (ft)	Inc (°)	Az (°)	TVD (ft)	Local N (ft)	Local E (ft)	DLS (°/100ft)	VS (ft)
Tie On	20.50	0.000	131.380	20.50	0.00	0.00	0.00	0.00
End of Tangent	1200.00	0.000	131.380	1200.00	0.00	0.00	0.00	0.00
End of Build (XS)	1883.21	13.664	131.380	1876.76	-53.60	60.84	2.00	58.92
KOP	7029.18	13.664	131.380	6877.08	-857.21	972.99	0.00	942.31
LANDING	7705.14	90.019	180.448	7274.00	-1329.63	1042.22	12.00	1419.07
TD	16972.87	90.019	180.448	7271.00	-10597.08	969.74	0.00	10641.35

Bottom Hole Location									
MD (ft)	Inc (°)	Az (°)	TVD (ft)	Local N (ft)	Local E (ft)	Grid East (US ft)	Grid North (US ft)	Latitude	Longitude
16972.87	90.019	180.448	7271.00	-10597.08	969.74	3225228.85	1234323.48	39°58'25.6800"N	104°41'46.8600"W



Planned Wellpath Report

Walla 5-15-2L PWP Rev-A.0

Page 1 of 7

REFERENCE WELLPATH IDENTIFICATION

Operator	CONFLUENCE RESOURCES	Well	Walla 5-15-2L
Field	WELD COUNTY (NAD83, TRUE NORTH)	API/Legal	
Facility	SEC.31-T01N-R65W	Wellbore	Walla 5-15-2L PWB
Slot	SLOT#01 Walla 5-15-2L (861'FSL & 705'FEL,SEC.31)		

REPORT SETUP INFORMATION

Projection System	NAD83 / Lambert Colorado SP, Northern Zone (501), US feet	Software System	WellArchitect® 6.0
North Reference	True	User	Painsetr
Scale	0.999966	Report Generated	5/26/2020 at 12:22:18 PM
Convergence at slot	0.52° East	Database	WA_Denver

WELLPATH LOCATION

	Local coordinates		Grid coordinates		Geographic coordinates	
	North[ft]	East[ft]	Easting[US ft]	Northing[US ft]	Latitude	Longitude
Slot Location	0.00	0.00	3224163.56	1244911.00	40.0028900°	-104.6998100°
Facility Reference Pt			3224163.56	1244911.00	40.0028900°	-104.6998100°
Field Reference Pt			3230456.90	1245096.09	40.0032400°	-104.6773400°

WELLPATH DATUM

Calculation method	Minimum curvature	RIG (RT) to Facility Vertical Datum	5059.50ft
Horizontal Reference Pt	Slot	RIG (RT) to Mean Sea Level	5059.50ft
Vertical Reference Pt	RIG (RT)	RIG (RT) to Mud Line at Slot (SLOT#01 Walla 5-15-2L (861'FSL & 705'FEL,SEC.31))	5059.50ft
MD Reference Pt	RIG (RT)	Section Origin	N 0.00, E 0.00 ft
Field Vertical Reference	Mean Sea Level	Section Azimuth	174.77°

Planned Wellpath Report

Walla 5-15-2L PWP Rev-A.0

Page 2 of 7

REFERENCE WELLPATH IDENTIFICATION

Operator	CONFLUENCE RESOURCES	Well	Walla 5-15-2L
Field	WELD COUNTY (NAD83, TRUE NORTH)	API/Legal	
Facility	SEC.31-T01N-R65W	Wellbore	Walla 5-15-2L PWB
Slot	SLOT#01 Walla 5-15-2L (861'FSL & 705'FEL,SEC.31)		

WELLPATH DATA (176 stations) † = interpolated, ‡ = extrapolated station

MD [ft]	Inclination [°]	Azimuth [°]	TVD [ft]	Vert Sect [ft]	North [ft]	East [ft]	Grid East [US ft]	Grid North [US ft]	Latitude	Longitude	DLS [°/100ft]	Comments
0.00†	0.000	131.380	0.00	0.00	0.00	0.00	3224163.56	1244911.00	40.0028900	-104.6998100	0.00	
20.50	0.000	131.380	20.50	0.00	0.00	0.00	3224163.56	1244911.00	40.0028900	-104.6998100	0.00	Tie On
120.50†	0.000	131.380	120.50	0.00	0.00	0.00	3224163.56	1244911.00	40.0028900	-104.6998100	0.00	
220.50†	0.000	131.380	220.50	0.00	0.00	0.00	3224163.56	1244911.00	40.0028900	-104.6998100	0.00	
320.50†	0.000	131.380	320.50	0.00	0.00	0.00	3224163.56	1244911.00	40.0028900	-104.6998100	0.00	
420.50†	0.000	131.380	420.50	0.00	0.00	0.00	3224163.56	1244911.00	40.0028900	-104.6998100	0.00	
520.50†	0.000	131.380	520.50	0.00	0.00	0.00	3224163.56	1244911.00	40.0028900	-104.6998100	0.00	
620.50†	0.000	131.380	620.50	0.00	0.00	0.00	3224163.56	1244911.00	40.0028900	-104.6998100	0.00	
720.50†	0.000	131.380	720.50	0.00	0.00	0.00	3224163.56	1244911.00	40.0028900	-104.6998100	0.00	
820.50†	0.000	131.380	820.50	0.00	0.00	0.00	3224163.56	1244911.00	40.0028900	-104.6998100	0.00	
920.50†	0.000	131.380	920.50	0.00	0.00	0.00	3224163.56	1244911.00	40.0028900	-104.6998100	0.00	
1020.50†	0.000	131.380	1020.50	0.00	0.00	0.00	3224163.56	1244911.00	40.0028900	-104.6998100	0.00	
1120.50†	0.000	131.380	1120.50	0.00	0.00	0.00	3224163.56	1244911.00	40.0028900	-104.6998100	0.00	
1200.00	0.000	131.380	1200.00	0.00	0.00	0.00	3224163.56	1244911.00	40.0028900	-104.6998100	0.00	End of Tangent
1220.50†	0.410	131.380	1220.50	0.05	-0.05	0.06	3224163.61	1244910.95	40.0028899	-104.6998098	2.00	
1320.50†	2.410	131.380	1320.46	1.84	-1.68	1.90	3224165.48	1244909.34	40.0028854	-104.6998032	2.00	
1420.50†	4.410	131.380	1420.28	6.16	-5.61	6.36	3224169.97	1244905.45	40.0028746	-104.6997873	2.00	
1520.50†	6.410	131.380	1519.83	13.01	-11.84	13.44	3224177.10	1244899.28	40.0028575	-104.6997620	2.00	
1620.50†	8.410	131.380	1618.99	22.39	-20.36	23.11	3224186.86	1244890.85	40.0028341	-104.6997275	2.00	
1720.50†	10.410	131.380	1717.64	34.27	-31.17	35.38	3224199.22	1244880.15	40.0028044	-104.6996837	2.00	
1820.50†	12.410	131.380	1815.66	48.64	-44.25	50.23	3224214.18	1244867.21	40.0027685	-104.6996307	2.00	
1883.21	13.664	131.380	1876.76	58.92	-53.60	60.84	3224224.88	1244857.95	40.0027429	-104.6995928	2.00	End of Build (XS)
1920.50†	13.664	131.380	1912.99	65.32	-59.42	67.45	3224231.54	1244852.19	40.0027269	-104.6995692	0.00	
2020.50†	13.664	131.380	2010.16	82.49	-75.04	85.17	3224249.40	1244836.73	40.0026840	-104.6995060	0.00	
2120.50†	13.664	131.380	2107.33	99.66	-90.66	102.90	3224267.27	1244821.28	40.0026411	-104.6994427	0.00	
2220.50†	13.664	131.380	2204.50	116.82	-106.27	120.63	3224285.13	1244805.82	40.0025983	-104.6993794	0.00	
2320.50†	13.664	131.380	2301.67	133.99	-121.89	138.35	3224303.00	1244790.37	40.0025554	-104.6993162	0.00	
2420.50†	13.664	131.380	2398.83	151.16	-137.50	156.08	3224320.86	1244774.91	40.0025125	-104.6992529	0.00	
2520.50†	13.664	131.380	2496.00	168.32	-153.12	173.80	3224338.73	1244759.46	40.0024697	-104.6991896	0.00	
2620.50†	13.664	131.380	2593.17	185.49	-168.74	191.53	3224356.59	1244744.00	40.0024268	-104.6991263	0.00	
2720.50†	13.664	131.380	2690.34	202.65	-184.35	209.25	3224374.46	1244728.55	40.0023839	-104.6990631	0.00	
2820.50†	13.664	131.380	2787.51	219.82	-199.97	226.98	3224392.32	1244713.09	40.0023411	-104.6989998	0.00	
2920.50†	13.664	131.380	2884.68	236.99	-215.59	244.70	3224410.19	1244697.64	40.0022982	-104.6989365	0.00	
3020.50†	13.664	131.380	2981.85	254.15	-231.20	262.43	3224428.05	1244682.18	40.0022553	-104.6988733	0.00	
3120.50†	13.664	131.380	3079.02	271.32	-246.82	280.15	3224445.92	1244666.73	40.0022125	-104.6988100	0.00	
3220.50†	13.664	131.380	3176.19	288.49	-262.43	297.88	3224463.78	1244651.27	40.0021696	-104.6987467	0.00	
3320.50†	13.664	131.380	3273.36	305.65	-278.05	315.61	3224481.65	1244635.82	40.0021267	-104.6986835	0.00	
3420.50†	13.664	131.380	3370.53	322.82	-293.67	333.33	3224499.51	1244620.36	40.0020839	-104.6986202	0.00	
3520.50†	13.664	131.380	3467.70	339.99	-309.28	351.06	3224517.38	1244604.91	40.0020410	-104.6985569	0.00	
3620.50†	13.664	131.380	3564.87	357.15	-324.90	368.78	3224535.24	1244589.45	40.0019981	-104.6984937	0.00	
3720.50†	13.664	131.380	3662.04	374.32	-340.51	386.51	3224553.11	1244574.00	40.0019552	-104.6984304	0.00	
3820.50†	13.664	131.380	3759.21	391.49	-356.13	404.23	3224570.97	1244558.54	40.0019124	-104.6983671	0.00	
3920.50†	13.664	131.380	3856.38	408.65	-371.75	421.96	3224588.84	1244543.09	40.0018695	-104.6983038	0.00	
4020.50†	13.664	131.380	3953.55	425.82	-387.36	439.68	3224606.70	1244527.63	40.0018266	-104.6982406	0.00	
4120.50†	13.664	131.380	4050.72	442.99	-402.98	457.41	3224624.57	1244512.18	40.0017838	-104.6981773	0.00	

Planned Wellpath Report

Walla 5-15-2L PWP Rev-A.0

Page 3 of 7

REFERENCE WELLPATH IDENTIFICATION

Operator	CONFLUENCE RESOURCES	Well	Walla 5-15-2L
Field	WELD COUNTY (NAD83, TRUE NORTH)	API/Legal	
Facility	SEC.31-T01N-R65W	Wellbore	Walla 5-15-2L PWB
Slot	SLOT#01 Walla 5-15-2L (861'FSL & 705'FEL,SEC.31)		

WELLPATH DATA (176 stations) † = interpolated, ‡ = extrapolated station

MD [ft]	Inclination [°]	Azimuth [°]	TVD [ft]	Vert Sect [ft]	North [ft]	East [ft]	Grid East [US ft]	Grid North [US ft]	Latitude	Longitude	DLS [°/100ft]	Comments
4220.50†	13.664	131.380	4147.89	460.15	-418.60	475.13	3224642.43	1244496.72	40.0017409	-104.6981140	0.00	
4320.50†	13.664	131.380	4245.06	477.32	-434.21	492.86	3224660.30	1244481.27	40.0016980	-104.6980508	0.00	
4420.50†	13.664	131.380	4342.23	494.49	-449.83	510.59	3224678.16	1244465.81	40.0016552	-104.6979875	0.00	
4520.50†	13.664	131.380	4439.40	511.65	-465.44	528.31	3224696.03	1244450.36	40.0016123	-104.6979242	0.00	
4620.50†	13.664	131.380	4536.57	528.82	-481.06	546.04	3224713.89	1244434.90	40.0015694	-104.6978610	0.00	
4720.50†	13.664	131.380	4633.74	545.99	-496.68	563.76	3224731.76	1244419.45	40.0015266	-104.6977977	0.00	
4820.50†	13.664	131.380	4730.91	563.15	-512.29	581.49	3224749.62	1244403.99	40.0014837	-104.6977344	0.00	
4920.50†	13.664	131.380	4828.08	580.32	-527.91	599.21	3224767.49	1244388.54	40.0014408	-104.6976712	0.00	
5020.50†	13.664	131.380	4925.25	597.49	-543.53	616.94	3224785.35	1244373.08	40.0013980	-104.6976079	0.00	
5120.50†	13.664	131.380	5022.42	614.65	-559.14	634.66	3224803.22	1244357.63	40.0013551	-104.6975446	0.00	
5220.50†	13.664	131.380	5119.59	631.82	-574.76	652.39	3224821.08	1244342.17	40.0013122	-104.6974814	0.00	
5320.50†	13.664	131.380	5216.76	648.98	-590.37	670.11	3224838.95	1244326.72	40.0012693	-104.6974181	0.00	
5420.50†	13.664	131.380	5313.92	666.15	-605.99	687.84	3224856.81	1244311.26	40.0012265	-104.6973548	0.00	
5520.50†	13.664	131.380	5411.09	683.32	-621.61	705.57	3224874.68	1244295.81	40.0011836	-104.6972916	0.00	
5620.50†	13.664	131.380	5508.26	700.48	-637.22	723.29	3224892.54	1244280.35	40.0011407	-104.6972283	0.00	
5720.50†	13.664	131.380	5605.43	717.65	-652.84	741.02	3224910.41	1244264.90	40.0010979	-104.6971650	0.00	
5820.50†	13.664	131.380	5702.60	734.82	-668.46	758.74	3224928.27	1244249.44	40.0010550	-104.6971017	0.00	
5920.50†	13.664	131.380	5799.77	751.98	-684.07	776.47	3224946.14	1244233.99	40.0010121	-104.6970385	0.00	
6020.50†	13.664	131.380	5896.94	769.15	-699.69	794.19	3224964.00	1244218.53	40.0009693	-104.6969752	0.00	
6120.50†	13.664	131.380	5994.11	786.32	-715.30	811.92	3224981.87	1244203.08	40.0009264	-104.6969119	0.00	
6220.50†	13.664	131.380	6091.28	803.48	-730.92	829.64	3224999.73	1244187.62	40.0008835	-104.6968487	0.00	
6320.50†	13.664	131.380	6188.45	820.65	-746.54	847.37	3225017.60	1244172.17	40.0008407	-104.6967854	0.00	
6420.50†	13.664	131.380	6285.62	837.82	-762.15	865.09	3225035.46	1244156.71	40.0007978	-104.6967221	0.00	
6520.50†	13.664	131.380	6382.79	854.98	-777.77	882.82	3225053.33	1244141.26	40.0007549	-104.6966589	0.00	
6620.50†	13.664	131.380	6479.96	872.15	-793.39	900.55	3225071.19	1244125.80	40.0007120	-104.6965956	0.00	
6720.50†	13.664	131.380	6577.13	889.32	-809.00	918.27	3225089.06	1244110.35	40.0006692	-104.6965323	0.00	
6820.50†	13.664	131.380	6674.30	906.48	-824.62	936.00	3225106.92	1244094.89	40.0006263	-104.6964691	0.00	
6920.50†	13.664	131.380	6771.47	923.65	-840.23	953.72	3225124.79	1244079.44	40.0005834	-104.6964058	0.00	
7020.50†	13.664	131.380	6868.64	940.82	-855.85	971.45	3225142.65	1244063.98	40.0005406	-104.6963425	0.00	
7029.18	13.664	131.380	6877.08	942.31	-857.21	972.99	3225144.21	1244062.64	40.0005368	-104.6963371	0.00	KOP
7120.50†	22.325	153.878	6963.94	966.42	-879.98	988.76	3225160.19	1244040.01	40.0004743	-104.6962807	12.00	
7220.50†	33.348	164.239	7052.29	1011.35	-923.64	1004.65	3225176.47	1243996.49	40.0003545	-104.6962240	12.00	
7320.50†	44.834	169.800	7129.79	1073.73	-985.02	1018.41	3225190.78	1243935.25	40.0001860	-104.6961749	12.00	
7420.50†	56.499	173.462	7193.08	1150.81	-1061.41	1029.44	3225202.50	1243858.96	39.9999763	-104.6961356	12.00	
7520.50†	68.245	176.242	7239.38	1239.24	-1149.50	1037.26	3225211.11	1243770.95	39.9997345	-104.6961077	12.00	
7620.50†	80.031	178.595	7266.67	1335.15	-1245.42	1041.53	3225216.24	1243675.07	39.9994712	-104.6960925	12.00	
7705.14	90.019	180.448	7274.00†	1419.07	-1329.63	1042.22	3225217.70	1243590.88	39.9992400	-104.6960900	12.00	LANDING
7720.50†	90.019	180.448	7274.00	1434.36	-1344.99	1042.10	3225217.72	1243575.52	39.9991978	-104.6960904	0.00	
7820.50†	90.019	180.448	7273.96	1533.86	-1444.98	1041.32	3225217.84	1243475.52	39.9989233	-104.6960932	0.00	
7920.50†	90.019	180.448	7273.93	1633.37	-1544.98	1040.54	3225217.96	1243375.53	39.9986488	-104.6960960	0.00	
8020.50†	90.019	180.448	7273.90	1732.88	-1644.98	1039.75	3225218.08	1243275.53	39.9983743	-104.6960989	0.00	
8120.50†	90.019	180.448	7273.87	1832.39	-1744.97	1038.97	3225218.20	1243175.53	39.9980998	-104.6961017	0.00	
8220.50†	90.019	180.448	7273.83	1931.90	-1844.97	1038.19	3225218.32	1243075.54	39.9978253	-104.6961045	0.00	
8320.50†	90.019	180.448	7273.80	2031.41	-1944.97	1037.41	3225218.44	1242975.54	39.9975508	-104.6961073	0.00	
8420.50†	90.019	180.448	7273.77	2130.92	-2044.96	1036.63	3225218.56	1242875.55	39.9972763	-104.6961101	0.00	

Planned Wellpath Report

Walla 5-15-2L PWP Rev-A.0

Page 4 of 7

REFERENCE WELLPATH IDENTIFICATION

Operator	CONFLUENCE RESOURCES	Well	Walla 5-15-2L
Field	WELD COUNTY (NAD83, TRUE NORTH)	API/Legal	
Facility	SEC.31-T01N-R65W	Wellbore	Walla 5-15-2L PWB
Slot	SLOT#01 Walla 5-15-2L (861'FSL & 705'FEL,SEC.31)		

WELLPATH DATA (176 stations) † = interpolated, ‡ = extrapolated station

MD [ft]	Inclination [°]	Azimuth [°]	TVD [ft]	Vert Sect [ft]	North [ft]	East [ft]	Grid East [US ft]	Grid North [US ft]	Latitude	Longitude	DLS [°/100ft]	Comments
8520.50†	90.019	180.448	7273.74	2230.43	-2144.96	1035.84	3225218.68	1242775.55	39.9970018	-104.6961129	0.00	
8620.50†	90.019	180.448	7273.70	2329.94	-2244.96	1035.06	3225218.80	1242675.55	39.9967273	-104.6961157	0.00	
8720.50†	90.019	180.448	7273.67	2429.45	-2344.96	1034.28	3225218.92	1242575.56	39.9964528	-104.6961185	0.00	
8820.50†	90.019	180.448	7273.64	2528.96	-2444.95	1033.50	3225219.04	1242475.56	39.9961783	-104.6961213	0.00	
8920.50†	90.019	180.448	7273.61	2628.47	-2544.95	1032.72	3225219.16	1242375.56	39.9959038	-104.6961241	0.00	
9020.50†	90.019	180.448	7273.57	2727.98	-2644.95	1031.93	3225219.28	1242275.57	39.9956293	-104.6961269	0.00	
9120.50†	90.019	180.448	7273.54	2827.49	-2744.94	1031.15	3225219.40	1242175.57	39.9953548	-104.6961297	0.00	
9220.50†	90.019	180.448	7273.51	2927.00	-2844.94	1030.37	3225219.52	1242075.57	39.9950803	-104.6961325	0.00	
9320.50†	90.019	180.448	7273.48	3026.51	-2944.94	1029.59	3225219.64	1241975.58	39.9948058	-104.6961353	0.00	
9420.50†	90.019	180.448	7273.44	3126.02	-3044.93	1028.80	3225219.76	1241875.58	39.9945313	-104.6961381	0.00	
9520.50†	90.019	180.448	7273.41	3225.53	-3144.93	1028.02	3225219.88	1241775.59	39.9942568	-104.6961409	0.00	
9620.50†	90.019	180.448	7273.38	3325.04	-3244.93	1027.24	3225220.00	1241675.59	39.9939823	-104.6961438	0.00	
9720.50†	90.019	180.448	7273.35	3424.55	-3344.92	1026.46	3225220.12	1241575.59	39.9937078	-104.6961466	0.00	
9820.50†	90.019	180.448	7273.32	3524.06	-3444.92	1025.68	3225220.24	1241475.60	39.9934333	-104.6961494	0.00	
9920.50†	90.019	180.448	7273.28	3623.57	-3544.92	1024.89	3225220.36	1241375.60	39.9931588	-104.6961522	0.00	
10020.50†	90.019	180.448	7273.25	3723.08	-3644.92	1024.11	3225220.48	1241275.60	39.9928843	-104.6961550	0.00	
10120.50†	90.019	180.448	7273.22	3822.59	-3744.91	1023.33	3225220.60	1241175.61	39.9926098	-104.6961578	0.00	
10220.50†	90.019	180.448	7273.19	3922.09	-3844.91	1022.55	3225220.72	1241075.61	39.9923353	-104.6961606	0.00	
10320.50†	90.019	180.448	7273.15	4021.60	-3944.91	1021.77	3225220.84	1240975.62	39.9920608	-104.6961634	0.00	
10420.50†	90.019	180.448	7273.12	4121.11	-4044.90	1020.98	3225220.96	1240875.62	39.9917863	-104.6961662	0.00	
10520.50†	90.019	180.448	7273.09	4220.62	-4144.90	1020.20	3225221.08	1240775.62	39.9915118	-104.6961690	0.00	
10620.50†	90.019	180.448	7273.06	4320.13	-4244.90	1019.42	3225221.20	1240675.63	39.9912373	-104.6961718	0.00	
10720.50†	90.019	180.448	7273.02	4419.64	-4344.89	1018.64	3225221.32	1240575.63	39.9909628	-104.6961746	0.00	
10820.50†	90.019	180.448	7272.99	4519.15	-4444.89	1017.86	3225221.45	1240475.63	39.9906883	-104.6961774	0.00	
10920.50†	90.019	180.448	7272.96	4618.66	-4544.89	1017.07	3225221.57	1240375.64	39.9904138	-104.6961802	0.00	
11020.50†	90.019	180.448	7272.93	4718.17	-4644.88	1016.29	3225221.69	1240275.64	39.9901393	-104.6961830	0.00	
11120.50†	90.019	180.448	7272.89	4817.68	-4744.88	1015.51	3225221.81	1240175.64	39.9898648	-104.6961858	0.00	
11220.50†	90.019	180.448	7272.86	4917.19	-4844.88	1014.73	3225221.93	1240075.65	39.9895903	-104.6961886	0.00	
11320.50†	90.019	180.448	7272.83	5016.70	-4944.88	1013.95	3225222.05	1239975.65	39.9893158	-104.6961914	0.00	
11420.50†	90.019	180.448	7272.80	5116.21	-5044.87	1013.16	3225222.17	1239875.66	39.9890413	-104.6961943	0.00	
11520.50†	90.019	180.448	7272.76	5215.72	-5144.87	1012.38	3225222.29	1239775.66	39.9887668	-104.6961971	0.00	
11620.50†	90.019	180.448	7272.73	5315.23	-5244.87	1011.60	3225222.41	1239675.66	39.9884923	-104.6961999	0.00	
11720.50†	90.019	180.448	7272.70	5414.74	-5344.86	1010.82	3225222.53	1239575.67	39.9882178	-104.6962027	0.00	
11820.50†	90.019	180.448	7272.67	5514.25	-5444.86	1010.03	3225222.65	1239475.67	39.9879433	-104.6962055	0.00	
11920.50†	90.019	180.448	7272.64	5613.76	-5544.86	1009.25	3225222.77	1239375.67	39.9876688	-104.6962083	0.00	
12020.50†	90.019	180.448	7272.60	5713.27	-5644.85	1008.47	3225222.89	1239275.68	39.9873943	-104.6962111	0.00	
12120.50†	90.019	180.448	7272.57	5812.78	-5744.85	1007.69	3225223.01	1239175.68	39.9871198	-104.6962139	0.00	
12220.50†	90.019	180.448	7272.54	5912.29	-5844.85	1006.91	3225223.13	1239075.68	39.9868453	-104.6962167	0.00	
12320.50†	90.019	180.448	7272.51	6011.80	-5944.84	1006.12	3225223.25	1238975.69	39.9865708	-104.6962195	0.00	
12420.50†	90.019	180.448	7272.47	6111.31	-6044.84	1005.34	3225223.37	1238875.69	39.9862963	-104.6962223	0.00	
12520.50†	90.019	180.448	7272.44	6210.82	-6144.84	1004.56	3225223.49	1238775.70	39.9860218	-104.6962251	0.00	
12620.50†	90.019	180.448	7272.41	6310.32	-6244.84	1003.78	3225223.61	1238675.70	39.9857473	-104.6962279	0.00	
12720.50†	90.019	180.448	7272.38	6409.83	-6344.83	1003.00	3225223.73	1238575.70	39.9854728	-104.6962307	0.00	
12820.50†	90.019	180.448	7272.34	6509.34	-6444.83	1002.21	3225223.85	1238475.71	39.9851983	-104.6962335	0.00	
12920.50†	90.019	180.448	7272.31	6608.85	-6544.83	1001.43	3225223.97	1238375.71	39.9849238	-104.6962363	0.00	

Planned Wellpath Report

Walla 5-15-2L PWP Rev-A.0

Page 5 of 7

REFERENCE WELLPATH IDENTIFICATION

Operator	CONFLUENCE RESOURCES	Well	Walla 5-15-2L
Field	WELD COUNTY (NAD83, TRUE NORTH)	API/Legal	
Facility	SEC.31-T01N-R65W	Wellbore	Walla 5-15-2L PWB
Slot	SLOT#01 Walla 5-15-2L (861'FSL & 705'FEL,SEC.31)		

WELLPATH DATA (176 stations) † = interpolated, ‡ = extrapolated station

MD [ft]	Inclination [°]	Azimuth [°]	TVD [ft]	Vert Sect [ft]	North [ft]	East [ft]	Grid East [US ft]	Grid North [US ft]	Latitude	Longitude	DLS [°/100ft]	Comments
13020.50†	90.019	180.448	7272.28	6708.36	-6644.82	1000.65	3225224.09	1238275.71	39.9846493	-104.6962391	0.00	
13120.50†	90.019	180.448	7272.25	6807.87	-6744.82	999.87	3225224.21	1238175.72	39.9843748	-104.6962419	0.00	
13220.50†	90.019	180.448	7272.21	6907.38	-6844.82	999.09	3225224.33	1238075.72	39.9841003	-104.6962448	0.00	
13320.50†	90.019	180.448	7272.18	7006.89	-6944.81	998.30	3225224.45	1237975.72	39.9838258	-104.6962476	0.00	
13420.50†	90.019	180.448	7272.15	7106.40	-7044.81	997.52	3225224.57	1237875.73	39.9835513	-104.6962504	0.00	
13520.50†	90.019	180.448	7272.12	7205.91	-7144.81	996.74	3225224.69	1237775.73	39.9832768	-104.6962532	0.00	
13620.50†	90.019	180.448	7272.09	7305.42	-7244.80	995.96	3225224.81	1237675.74	39.9830023	-104.6962560	0.00	
13720.50†	90.019	180.448	7272.05	7404.93	-7344.80	995.17	3225224.93	1237575.74	39.9827278	-104.6962588	0.00	
13820.50†	90.019	180.448	7272.02	7504.44	-7444.80	994.39	3225225.05	1237475.74	39.9824533	-104.6962616	0.00	
13920.50†	90.019	180.448	7271.99	7603.95	-7544.80	993.61	3225225.17	1237375.75	39.9821788	-104.6962644	0.00	
14020.50†	90.019	180.448	7271.96	7703.46	-7644.79	992.83	3225225.29	1237275.75	39.9819043	-104.6962672	0.00	
14120.50†	90.019	180.448	7271.92	7802.97	-7744.79	992.05	3225225.41	1237175.75	39.9816298	-104.6962700	0.00	
14220.50†	90.019	180.448	7271.89	7902.48	-7844.79	991.26	3225225.53	1237075.76	39.9813553	-104.6962728	0.00	
14320.50†	90.019	180.448	7271.86	8001.99	-7944.78	990.48	3225225.66	1236975.76	39.9810808	-104.6962756	0.00	
14420.50†	90.019	180.448	7271.83	8101.50	-8044.78	989.70	3225225.78	1236875.77	39.9808063	-104.6962784	0.00	
14520.50†	90.019	180.448	7271.79	8201.01	-8144.78	988.92	3225225.90	1236775.77	39.9805318	-104.6962812	0.00	
14620.50†	90.019	180.448	7271.76	8300.52	-8244.77	988.14	3225226.02	1236675.77	39.9802573	-104.6962840	0.00	
14720.50†	90.019	180.448	7271.73	8400.03	-8344.77	987.35	3225226.14	1236575.78	39.9799828	-104.6962868	0.00	
14820.50†	90.019	180.448	7271.70	8499.54	-8444.77	986.57	3225226.26	1236475.78	39.9797083	-104.6962896	0.00	
14920.50†	90.019	180.448	7271.66	8599.05	-8544.77	985.79	3225226.38	1236375.78	39.9794338	-104.6962924	0.00	
15020.50†	90.019	180.448	7271.63	8698.55	-8644.76	985.01	3225226.50	1236275.79	39.9791593	-104.6962952	0.00	
15120.50†	90.019	180.448	7271.60	8798.06	-8744.76	984.23	3225226.62	1236175.79	39.9788848	-104.6962980	0.00	
15220.50†	90.019	180.448	7271.57	8897.57	-8844.76	983.44	3225226.74	1236075.79	39.9786103	-104.6963009	0.00	
15320.50†	90.019	180.448	7271.53	8997.08	-8944.75	982.66	3225226.86	1235975.80	39.9783358	-104.6963037	0.00	
15420.50†	90.019	180.448	7271.50	9096.59	-9044.75	981.88	3225226.98	1235875.80	39.9780613	-104.6963065	0.00	
15520.50†	90.019	180.448	7271.47	9196.10	-9144.75	981.10	3225227.10	1235775.81	39.9777868	-104.6963093	0.00	
15620.50†	90.019	180.448	7271.44	9295.61	-9244.74	980.32	3225227.22	1235675.81	39.9775123	-104.6963121	0.00	
15720.50†	90.019	180.448	7271.41	9395.12	-9344.74	979.53	3225227.34	1235575.81	39.9772378	-104.6963149	0.00	
15820.50†	90.019	180.448	7271.37	9494.63	-9444.74	978.75	3225227.46	1235475.82	39.9769633	-104.6963177	0.00	
15920.50†	90.019	180.448	7271.34	9594.14	-9544.73	977.97	3225227.58	1235375.82	39.9766888	-104.6963205	0.00	
16020.50†	90.019	180.448	7271.31	9693.65	-9644.73	977.19	3225227.70	1235275.82	39.9764143	-104.6963233	0.00	
16120.50†	90.019	180.448	7271.28	9793.16	-9744.73	976.40	3225227.82	1235175.83	39.9761398	-104.6963261	0.00	
16220.50†	90.019	180.448	7271.24	9892.67	-9844.73	975.62	3225227.94	1235075.83	39.9758653	-104.6963289	0.00	
16320.50†	90.019	180.448	7271.21	9992.18	-9944.72	974.84	3225228.06	1234975.83	39.9755908	-104.6963317	0.00	
16420.50†	90.019	180.448	7271.18	10091.69	-10044.72	974.06	3225228.18	1234875.84	39.9753163	-104.6963345	0.00	
16520.50†	90.019	180.448	7271.15	10191.20	-10144.72	973.28	3225228.30	1234775.84	39.9750418	-104.6963373	0.00	
16620.50†	90.019	180.448	7271.11	10290.71	-10244.71	972.49	3225228.42	1234675.85	39.9747673	-104.6963401	0.00	
16720.50†	90.019	180.448	7271.08	10390.22	-10344.71	971.71	3225228.54	1234575.85	39.9744928	-104.6963429	0.00	
16820.50†	90.019	180.448	7271.05	10489.73	-10444.71	970.93	3225228.66	1234475.85	39.9742183	-104.6963457	0.00	
16920.50†	90.019	180.448	7271.02	10589.24	-10544.70	970.15	3225228.78	1234375.86	39.9739438	-104.6963485	0.00	
16972.87	90.019	180.448	7271.00‡	10641.35	-10597.08	969.74	3225228.85	1234323.48	39.9738000	-104.6963500	0.00	TD

Planned Wellpath Report

Walla 5-15-2L PWP Rev-A.0

Page 6 of 7

REFERENCE WELLPATH IDENTIFICATION

Operator	CONFLUENCE RESOURCES	Well	Walla 5-15-2L
Field	WELD COUNTY (NAD83, TRUE NORTH)	API/Legal	
Facility	SEC.31-T01N-R65W	Wellbore	Walla 5-15-2L PWB
Slot	SLOT#01 Walla 5-15-2L (861'FSL & 705'FEL,SEC.31)		

HOLE & CASING SECTIONS - Ref Wellbore: Walla 5-15-2L PWB Ref Wellpath: Walla 5-15-2L PWP Rev-A.0

String/Diameter	Start MD [ft]	End MD [ft]	Interval [ft]	Start TVD [ft]	End TVD [ft]	Start N/S [ft]	Start E/W [ft]	End N/S [ft]	End E/W [ft]
9.625in Casing Surface	20.50	1500.55	1480.05	20.50	1500.00	0.00	0.00	-10.41	11.82

TARGETS

Name	MD [ft]	TVD [ft]	North [ft]	East [ft]	Grid East [US ft]	Grid North [US ft]	Latitude	Longitude	Shape
SEC.05-T01S-R65W	N/A	0.00	0.00	0.00	3224163.56	1244911.00	40.0028900	-104.6998100	polygon
2D Polygon: dimensions not calculated									
SEC.08-T01S-R65W	N/A	0.00	0.00	0.00	3224163.56	1244911.00	40.0028900	-104.6998100	polygon
2D Polygon: dimensions not calculated									
2) Walla 5-15-2L BHL REV-1 (470'FSL & 289'FWL,SEC.08)	16972.87	7271.00	-10597.08	969.74	3225228.85	1234323.48	39.9738000	-104.6963500	point
470' SETBACKS	N/A	7274.00	0.00	0.00	3224163.56	1244911.00	40.0028900	-104.6998100	polygon
2D Polygon: dimensions not calculated									
1) Walla 5-15-2L LP REV-1 (470'FNL & 289'FWL,SEC.05)	7705.14	7274.00	-1329.63	1042.22	3225217.70	1243590.88	39.9992400	-104.6960900	point

SURVEY PROGRAM - Ref Wellbore: Walla 5-15-2L PWB Ref Wellpath: Walla 5-15-2L PWP Rev-A.0

Start MD [ft]	End MD [ft]	Positional Uncertainty Model	Log Name/Comment	Wellbore
20.50	1500.55	BH NaviTrak (2019) (Standard)		Walla 5-15-2L PWB
1500.55	16972.87	BH AutoTrak Curve/eXpress (2019) (Short spacing)		Walla 5-15-2L PWB

Planned Wellpath Report

Walla 5-15-2L PWP Rev-A.0

Page 7 of 7

REFERENCE WELLPATH IDENTIFICATION

Operator	CONFLUENCE RESOURCES	Well	Walla 5-15-2L
Field	WELD COUNTY (NAD83, TRUE NORTH)	API/Legal	
Facility	SEC.31-T01N-R65W	Wellbore	Walla 5-15-2L PWB
Slot	SLOT#01 Walla 5-15-2L (861'FSL & 705'FEL,SEC.31)		

DESIGN COMMENTS

MD [ft]	Inclination [°]	Azimuth [°]	TVD [ft]	Comment
20.50	0.000	131.380	20.50	Tie On
1200.00	0.000	131.380	1200.00	End of Tangent
1883.21	13.664	131.380	1876.76	End of Build (XS)
7029.18	13.664	131.380	6877.08	KOP
7705.14	90.019	180.448	7274.00	LANDING
16972.87	90.019	180.448	7271.00	TD