



# Crestone Peak Resources

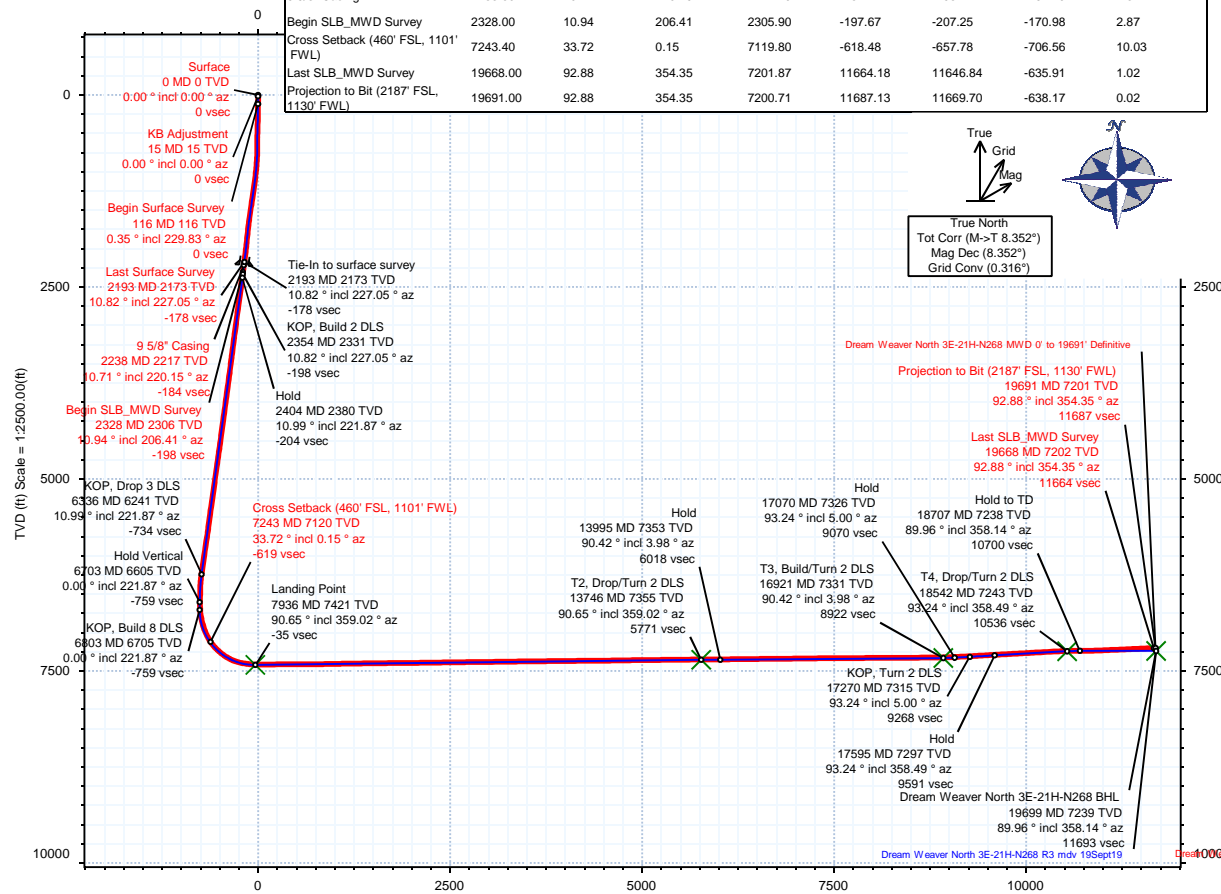
# Schlumberger

<b>Borehole:</b>	<b>Well:</b>	<b>Field:</b>	<b>Structure:</b>
Original Hole	Dream Weaver North 3E-21H-N268	CO, Weld County (NAD 83 NZ) - 2019	Crestone Peak 21-02N-68W (Dream Weaver Pad)

Gravity & Magnetic Parameters						Surface Location						NAD83 Colorado State Plane, Northern Zone, US Feet						Miscellaneous					
Model:	HDGM 2019		Dip:	66.428°		Date:	10-Nov-2019		Lat:	N 40 7 11.83		Northing:	1286919.52fUS		Grid Conv:	0.3158°		Slot:	Dream Weaver North		TVD Ref:	KB 28ft(4929ft above MSL)	
MagDec:	8.352°		FS:	51938.68nT		Gravity FS:	998.983mgm(9.80665 Based)		Lon:	W 105 0 40.55		Easting:	3136679.34fUS		Scale Fact:	0.99995944		Plan:	Dream Weaver North 3E-21H-N268		MWD 0' to 19691'	Definitive	

		Surface Location									
		Northing:	1286919.51769735	Easting:	3136679.34058827	Latitude:	N 40° 7' 11.83"	Longitude:	W 105° 0' 40.55"	VSec Azimuth:	356.89
Target Description		Grid Coord		Grid Coord		Elev		VSec		Elev	
Target Name	Description	Latitude	Longitude	Northing	Easting	IVD	(E)/WSec	(N)/T(S)	(E)/WSec	(N)/T(S)	(E)/WSec
Dream Weaver Pad North Sec 16-19 - CL		N 40° 7' 12.23"	W 105° 0' 40.89"	1286960.17	3136653.11	4929.00	42.15	40.80	-26.01	-26.01	-26.01
Dream Weaver Pad North Sec 16-19 - CL		N 40° 7' 12.23"	W 105° 0' 40.89"	1286878.17	3136705.30	4929.00	42.15	40.80	-26.01	-26.01	-26.01
Dream Weaver Pad North Sec 16-19 - CL		N 40° 7' 12.23"	W 105° 0' 40.89"	1286960.17	3136653.11	4929.00	42.15	40.80	-26.01	-26.01	-26.01
Dream Weaver Pad North Sec 16-19 - CL		N 40° 7' 12.23"	W 105° 0' 40.89"	1286960.17	3136653.11	4929.00	42.15	40.80	-26.01	-26.01	-26.01
Dream Weaver Pad North Sec 16-19 - CL		N 40° 7' 12.23"	W 105° 0' 40.89"	1286878.17	3136705.30	4929.00	42.15	40.80	-26.01	-26.01	-26.01
Dream Weaver Pad North Sec 16-19 - CL		N 40° 7' 12.23"	W 105° 0' 40.89"	1286960.17	3136653.11	4929.00	42.15	40.80	-26.01	-26.01	-26.01
Dream Weaver Pad North Sec 16-19 - CL		N 40° 7' 12.23"	W 105° 0' 40.89"	1286960.17	3136653.11	4929.00	42.15	40.80	-26.01	-26.01	-26.01
Dream Weaver Pad North Sec 16-19 - CL		N 40° 7' 12.23"	W 105° 0' 40.89"	1286960.17	3136653.11	4929.00	42.15	40.80	-26.01	-26.01	-26.01
Dream Weaver Pad North Sec 16-19 - CL		N 40° 7' 12.23"	W 105° 0' 40.89"	1286960.17	3136653.11	4929.00	42.15	40.80	-26.01	-26.01	-26.01
Dream Weaver Pad North Sec 16-19 - CL		N 40° 7' 12.23"	W 105° 0' 40.89"	1286960.17	3136653.11	4929.00	42.15	40.80	-26.01	-26.01	-26.01
Dream Weaver Pad North Sec 16-19 - CL		N 40° 7' 12.23"	W 105° 0' 40.89"	1286960.17	3136653.11	4929.00	42.15	40.80	-26.01	-26.01	-26.01
Dream Weaver Pad North Sec 16-19 - CL		N 40° 7' 12.23"	W 105° 0' 40.89"	1286960.17	3136653.11	4929.00	42.15	40.80	-26.01	-26.01	-26.01
Dream Weaver Pad North Sec 16-19 - CL		N 40° 7' 12.23"	W 105° 0' 40.89"	1286960.17	3136653.11	4929.00	42.15	40.80	-26.01	-26.01	-26.01
Dream Weaver Pad North Sec 16-19 - CL		N 40° 7' 12.23"	W 105° 0' 40.89"	1286960.17	3136653.11	4929.00	42.15	40.80	-26.01	-26.01	-26.01
Dream Weaver Pad North Sec 16-19 - CL		N 40° 7' 12.23"	W 105° 0' 40.89"	1286960.17	3136653.11	4929.00	42.15	40.80	-26.01	-26.01	-26.01
Dream Weaver Pad North Sec 16-19 - CL		N 40° 7' 12.23"	W 105° 0' 40.89"	1286960.17	3136653.11	4929.00	42.15	40.80	-26.01	-26.01	-26.01
Dream Weaver Pad North Sec 16-19 - CL		N 40° 7' 12.23"	W 105° 0' 40.89"	1286960.17	3136653.11	4929.00	42.15	40.80	-26.01	-26.01	-26.01
Dream Weaver Pad North Sec 16-19 - CL		N 40° 7' 12.23"	W 105° 0' 40.89"	1286960.17	3136653.11	4929.00	42.15	40.80	-26.01	-26.01	-26.01
Dream Weaver Pad North Sec 16-19 - CL		N 40° 7' 12.23"	W 105° 0' 40.89"	1286960.17	3136653.11	4929.00	42.15	40.80	-26.01	-26.01	-26.01
Dream Weaver Pad North Sec 16-19 - CL		N 40° 7' 12.23"	W 105° 0' 40.89"	1286960.17	3136653.11	4929.00	42.15	40.80	-26.01	-26.01	-26.01
Dream Weaver Pad North Sec 16-19 - CL		N 40° 7' 12.23"	W 105° 0' 40.89"	1286960.17	3136653.11	4929.00	42.15	40.80	-26.01	-26.01	-26.01
Dream Weaver Pad North Sec 16-19 - CL		N 40° 7' 12.23"	W 105° 0' 40.89"	1286960.17	3136653.11	4929.00	42.15	40.80	-26.01	-26.01	-26.01
Dream Weaver Pad North Sec 16-19 - CL		N 40° 7' 12.23"	W 105° 0' 40.89"	1286960.17	3136653.11	4929.00	42.15	40.80	-26.01	-26.01	-26.01
Dream Weaver Pad North Sec 16-19 - CL		N 40° 7' 12.23"	W 105° 0' 40.89"	1286960.17	3136653.11	4929.00	42.15	40.80	-26.01	-26.01	-26.01
Dream Weaver Pad North Sec 16-19 - CL		N 40° 7' 12.23"	W 105° 0' 40.89"	1286960.17	3136653.11	4929.00	42.15	40.80	-26.01	-26.01	-26.01
Dream Weaver Pad North Sec 16-19 - CL		N 40° 7' 12.23"	W 105° 0' 40.89"	1286960.17	3136653.11	4929.00	42.15	40.80	-26.01	-26.01	-26.01
Dream Weaver Pad North Sec 16-19 - CL		N 40° 7' 12.23"	W 105° 0' 40.89"	1286960.17	3136653.11	4929.00	42.15	40.80	-26.01	-26.01	-26.01
Dream Weaver Pad North Sec 16-19 - CL		N 40° 7' 12.23"	W 105° 0' 40.89"	1286960.17	3136653.11	4929.00	42.15	40.80	-26.01	-26.01	-26.01
Dream Weaver Pad North Sec 16-19 - CL		N 40° 7' 12.23"	W 105° 0' 40.89"	1286960.17	3136653.11	4929.00	42.15	40.80	-26.01	-26.01	-26.01
Dream Weaver Pad North Sec 16-19 - CL		N 40° 7' 12.23"	W 105° 0' 40.89"	1286960.17	3136653.11	4929.00	42.15	40.80	-26.01	-26.01	-26.01
Dream Weaver Pad North Sec 16-19 - CL		N 40° 7' 12.23"	W 105° 0' 40.89"	1286960.17	3136653.11	4929.00	42.15	40.80	-26.01	-26.01	-26.01
Dream Weaver Pad North Sec 16-19 - CL		N 40° 7' 12.23"	W 105° 0' 40.89"	1286960.17	3136653.11	4929.00	42.15	40.80	-26.01	-26.01	-26.01
Dream Weaver Pad North Sec 16-19 - CL		N 40° 7' 12.23"	W 105° 0' 40.89"	1286960.17	3136653.11	4929.00	42.15	40.80	-26.01	-26.01	-26.01
Dream Weaver Pad North Sec 16-19 - CL		N 40° 7' 12.23"	W 105° 0' 40.89"	1286960.17	3136653.11	4929.00	42.15	40.80	-26.01	-26.01	-26.01
Dream Weaver Pad North Sec 16-19 - CL		N 40° 7' 12.23"	W 105° 0' 40.89"	1286960.17	3136653.11	4929.00	42.15	40.80	-26.01	-26.01	-26.01
Dream Weaver Pad North Sec 16-19 - CL		N 40° 7' 12.23"	W 105° 0' 40.89"	1286960.17	3136653.11	4929.00	42.15	40.80	-26.01	-26.01	-26.01
Dream Weaver Pad North Sec 16-19 - CL		N 40° 7' 12.23"	W 105° 0' 40.89"	1286960.17	3136653.11	4929.00	42.15	40.80	-26.01	-26.01	-26.01
Dream Weaver Pad North Sec 16-19 - CL		N 40° 7' 12.23"	W 105° 0' 40.89"	1286960.17	3136653.11	4929.00	42.15	40.80	-26.01	-26.01	-26.01
Dream Weaver Pad North Sec 16-19 - CL		N 40° 7' 12.23"	W 105° 0' 40.89"	1286960.17	3136653.11	4929.00	42.15	40.80	-26.01	-26.01	-26.01
Dream Weaver Pad North Sec 16-19 - CL		N 40° 7' 12.23"	W 105° 0' 40.89"	1286960.17	3136653.11	4929.00	42.15	40.80	-26.01	-26.01	-26.01
Dream Weaver Pad North Sec 16-19 - CL		N 40° 7' 12.23"	W 105° 0' 40.89"	1286960.17	3136653.11	4929.00	42.15	40.80	-26.01	-26.01	-26.01
Dream Weaver Pad North Sec 16-19 - CL		N 40° 7' 12.23"	W 105° 0' 40.89"	1286960.17	3136653.11	4929.00	42.15	40.80	-26.01	-26.01	-26.01
Dream Weaver Pad North Sec 16-19 - CL		N 40° 7' 12.23"	W 105° 0' 40.89"	1286960.17	3136653.11	4929.00	42.15	40.80	-26.01	-26.01	-26.01
Dream Weaver Pad North Sec 16-19 - CL		N 40° 7' 12.23"	W 105° 0' 40.89"	1286960.17	3136653.11	4929.00	42.15	40.80	-26.01	-26.01	-26.01
Dream Weaver Pad North Sec 16-19 - CL		N 40° 7' 12.23"	W 105° 0' 40.89"	1286960.17	3136653.11	4929.00	42.15	40.80	-26.01	-26.01	-26.01
Dream Weaver Pad North Sec 16-19 - CL		N 40° 7' 12.23"	W 105° 0' 40.89"	1286960.17	3136653.11	4929.00	42.15	40.80	-26.01	-26.01	-26.01
Dream Weaver Pad North Sec 16-19 - CL		N 40° 7' 12.23"	W 105° 0' 40.89"	1286960.17	3136653.11	4929.00	42.15	40.80	-26.01	-26.01	-26.01
Dream Weaver Pad North Sec 16-19 - CL		N 40° 7' 12.23"	W 105° 0' 40.89"	1286960.17	3136653.11	4929.00	42.15	40.80	-26.01	-26.01	-26.01
Dream Weaver Pad North Sec 16-19 - CL		N 40° 7' 12.23"	W 105° 0' 40.89"	1286960.17	3136653.11	4929.00	42.15	40.80	-26.01	-26.01	-26.01
Dream Weaver Pad North Sec 16-19 - CL		N 40° 7' 12.23"	W 105° 0' 40.89"	1286960.17	3136653.11	4929.00	42.15	40.80	-26.01	-26.01	-26.01
Dream Weaver Pad North Sec 16-19 - CL		N 40° 7' 12.23"	W 105° 0' 40.89"	1286960.17	3136653.11	4929.00	42.15	40.80	-26.01	-26.01	-26.01
Dream Weaver Pad North Sec 16-19 - CL		N 40° 7' 12.23"	W 105° 0' 40.89"	1286960.17	3136653.11	4929.00	42.15	40.80	-26.01	-26.01	-26.01
Dream Weaver Pad North Sec 16-19 - CL		N 40° 7' 12.23"	W 105° 0' 40.89"	1286960.17	3136653.11	4929.00	42.15	40.80	-26.01	-26.01	-

Critical Points								
Critical Point	MD	INCL	AZIM	TVD	VSEC	N(+)/S(-)	E(+)/W(-)	DLS
Surface	0.00	0.00	0.00	0.00	0.00	0.00	0.00	
KB Adjustment	15.00	0.00	0.00	15.00	0.00	0.00	0.00	0.00
Begin Surface Survey	116.00	0.35	229.83	116.00	-0.19	-0.20	-0.24	0.35
Last Surface Survey	2193.00	10.82	227.05	2173.28	-178.39	-187.13	-156.00	2.10
9 5/8" Casing	2238.00	10.71	220.15	2217.49	-184.14	-193.21	-161.79	2.87
Begin SLB_MWD Survey	2328.00	10.94	206.41	2305.90	-197.67	-207.25	-170.98	2.87
Cross Setback (460' FSL, 1101' FWL)	7243.40	33.72	0.15	7119.80	-618.48	-657.78	-706.56	10.03
Last SLB_MWD Survey	19668.00	92.88	354.35	7201.87	11664.18	11646.84	-635.91	1.02
Projection to Bit (2187" FSL, 1130' FWL)	19691.00	92.88	354.35	7200.71	11687.13	11669.70	-638.17	0.02



Vertical Section (ft) Azim = 356.89° Scale = 1:2500.00(ft) Origin = 0N/-S, 0E/-W

