

# Crestone Peak Resources

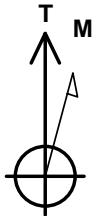
## Final Plot

### Herbers 1G-20H-B167

Herbers 20H-B167 Pad Sec.20-T1N-R67W  
 North American Datum 1983, US State Plane 1983, Colorado Northern Zone  
 Ground Elevation: 5106.0  
 +N/-S +E/-W Northing Easting Latitude Longitude Slot  
 0.0 0.0 1258515.93 3164255.60 40.041523 -104.913333  
 Original Well Elev WELL @ 5131.0ft (Original Well Elev)

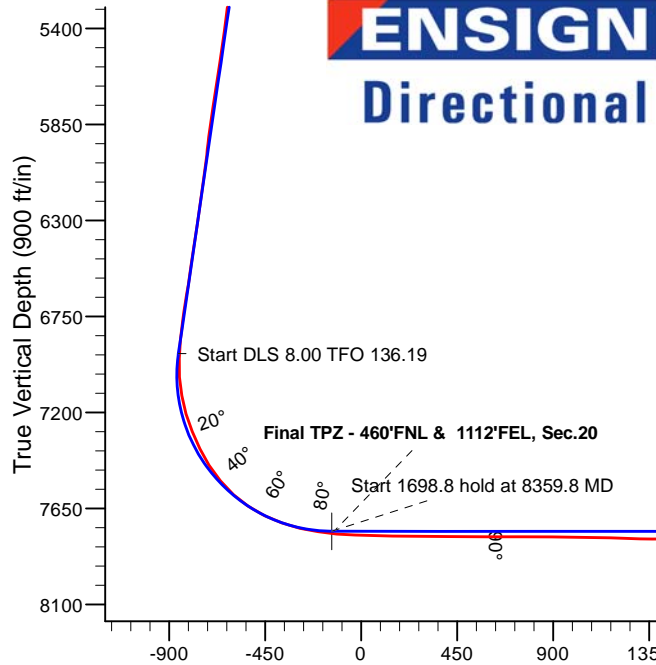
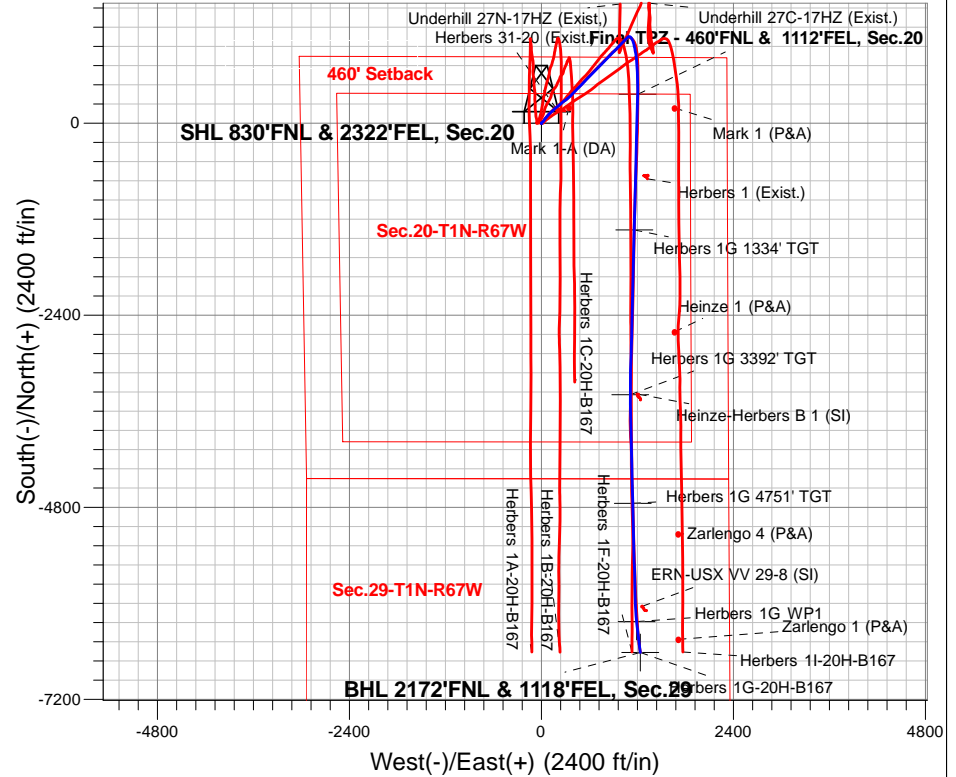
#### WELLBORE TARGET DETAILS

Name	TVD	+N/-S	+E/-W	Latitude	Longitude	Shape
SHL 830'FNL & 2322'FEL, Sec.20	1.0	0.0	0.0	40.041523	-104.913333	Point
Herbers 1G 1334' TGT	7757.0	-1334.0	1161.2	40.037861	-104.909186	Point
TPZ 460'FNL & 1118'FEL, Sec.20	7757.0	364.3	1202.8	40.042523	-104.909037	Point
Herbers 1G 3392' TGT	7783.0	-3392.0	1112.0	40.032211	-104.909362	Point
Herbers 1G 4751' TGT	7785.0	-4751.0	1141.6	40.028481	-104.909256	Point
Herbers 1G WP1	7818.1	-6229.6	1191.1	40.024421	-104.909080	Point
BHL 2172'FNL & 1118'FEL, Sec.29	7827.0	-6615.9	1235.3	40.023361	-104.908922	Point



Azimuths to True North  
 Magnetic North: 8.12°  
 Magnetic Field  
 Strength: 51949.5snT  
 Dip Angle: 66.33°  
 Date: 02/06/2020  
 Model: HDGM

Herbers 20H-B167 Pad Sec.20-T1N-R67W  
 Herbers 1G-20H-B167  
 Plan #2 (2-5-20)  
 11:34, April 06 2020



#### SECTION DETAILS

Sec	MD	Inc	Azi	TVD	+N/-S	+E/-W	Dleg	TFace	VSec	Target
1	2576.0	10.10	56.50	2530.8	291.4	303.0	0.00	0.00	-230.8	
2	2676.0	10.10	56.50	2629.3	301.1	317.7	0.00	0.00	-237.7	
3	2919.4	14.25	44.29	2867.2	334.3	356.4	2.00	-37.87	-263.2	
4	7105.0	14.25	44.29	6923.9	1072.1	1076.1	0.00	0.00	-856.4	
5	8360.0	90.00	181.40	7757.0	364.3	1202.8	8.00	136.22	-137.4	TPZ 460'FNL & 1118'FEL, Sec.20
6	10058.8	90.00	181.40	7757.0	-1334.0	1161.2	0.00	0.00	1524.5	Herbers 1G 1334' TGT
7	10095.4	89.27	181.37	7757.2	-1370.5	1160.3	2.00	-177.36	1560.2	
8	12117.6	89.27	181.37	7783.0	-3392.0	1112.0	0.00	0.00	3538.5	Herbers 1G 3392' TGT
9	12259.8	89.95	178.61	7784.0	-3534.2	1112.0	2.00	-76.15	3678.3	
10	13476.9	89.95	178.61	7785.0	-4751.0	1141.6	0.00	0.00	4879.8	Herbers 1G 4751' TGT
11	13540.1	88.69	178.51	7785.7	-4814.1	1143.2	2.00	-175.58	4942.2	
12	14704.9	88.69	178.51	7812.3	-5978.2	1173.5	0.00	0.00	6092.0	
13	14957.1	88.69	173.47	7818.1	-6229.6	1191.1	2.00	-90.10	6342.4	Herbers 1G WP1
14	15346.0	88.69	173.47	7827.0	-6615.9	1235.3	0.00	0.00	6730.3	BHL 2172'FNL & 1118'FEL, Sec.29

