

FINAL PLOT

Well Name: **Herbers 1B-20H-B167**

Surface Location: Herbers 20H-B167 Pad Sec.20-T1N-R67W
 North American Datum 1983 , US State Plane 1983, Colorado Northern Zone
 Ground Elevation: 5107.0

+N/-S	+E/-W	Northing	Easting	Latitude	Longitude	Slot
0.0	0.0	1258515.98	3164205.76	40.041524	-104.913511	

Original Well Elev WELL @ 5130.0ft (Original Well Elev)

WELLBORE TARGET DETAILS

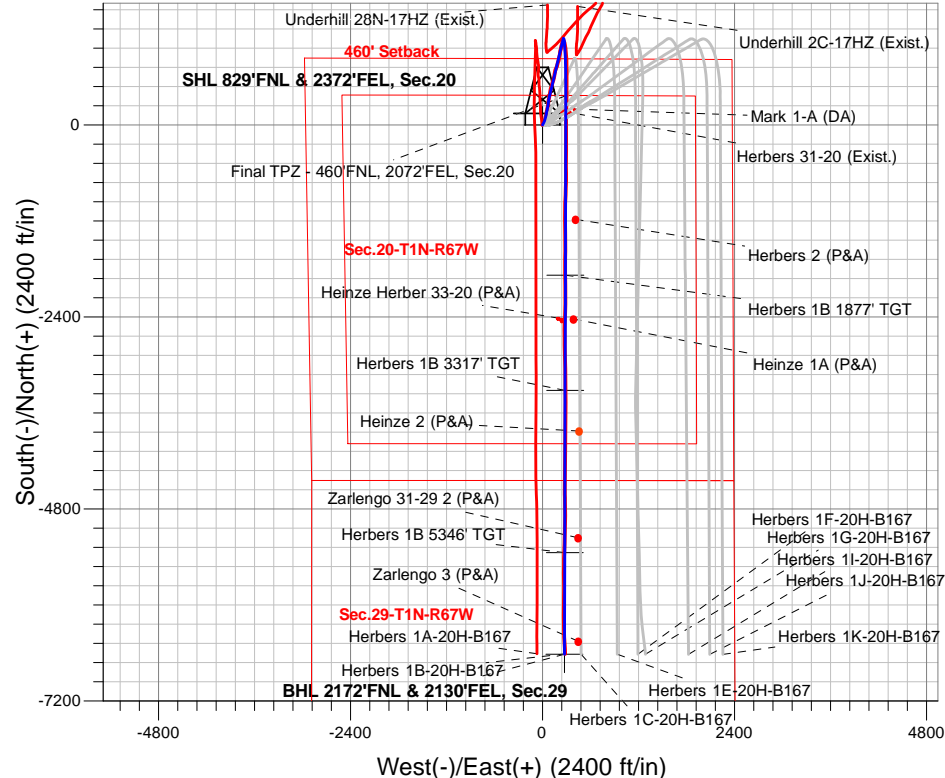
Name	TVD	+N/-S	+E/-W	Shape
SHL 829'FNL & 2372'FEL, Sec.20	1.0	0.0	0.0	Point
Herbers 1B 1877' TGT	7629.0	-1877.0	284.8	Point
TPZ 460'FNL & 2081'FEL, Sec.20	7629.0	368.3	290.1	Point
Herbers 1B 3317' TGT	7633.0	-3317.0	281.4	Point
Herbers 1B 5346' TGT	7692.0	-5346.0	276.6	Point
BHL 2172'FNL & 2130'FEL, Sec.29	7709.0	-6615.2	273.6	Point



Azimuths to True North
 Magnetic North: 8.12°

Magnetic Field
 Strength: 51942.0snT
 Dip Angle: 66.33°
 Date: 3/2/2020
 Model: HDGM

Herbers 20H-B167 Pad Sec.20-T1N-R67W
Herbers 1B-20H-B167
Plan #4 (3-2-20)
8:23, March 09 2020



SECTION DETAILS

Sec	MD	Inc	Azi	TVD	+N/-S	+E/-W	Dleg	TFace	VSect	Target
1	2553.0	9.05	12.58	2520.1	354.8	85.0	0.00	0.00	-351.0	
2	2653.0	9.05	12.58	2618.9	370.1	88.4	0.00	0.00	-366.1	
3	2693.7	9.85	13.55	2659.1	376.6	89.9	2.00	11.68	-372.6	
4	6890.8	9.85	13.55	6794.3	1074.6	258.1	0.00	0.00	-1063.0	
5	8135.6	90.00	180.13	7629.0	368.3	290.1	8.00	166.39	-356.0	TPZ 460'FNL & 2081'FEL, Sec.20
6	10380.9	90.00	180.13	7629.0	-1877.0	284.8	0.00	0.00	1887.2	Herbers 1B 1877' TGT
7	10388.9	89.84	180.13	7629.0	-1885.0	284.8	2.00	-179.74	1895.1	
8	11820.9	89.84	180.13	7633.0	-3317.0	281.4	0.00	0.00	3325.8	Herbers 1B 3317' TGT
9	11897.6	88.31	180.14	7634.2	-3393.7	281.2	2.00	179.95	3402.5	
10	13850.8	88.31	180.14	7692.0	-5346.0	276.6	0.00	0.00	5352.9	Herbers 1B 5346' TGT
11	13898.0	89.25	180.13	7693.0	-5393.2	276.5	2.00	-0.06	5400.0	
12	15120.1	89.25	180.13	7709.0	-6615.2	273.6	0.00	0.00	6620.9	BHL 2172'FNL & 2130'FEL, Sec.29

