

Inspection Photos

6/03/2020

Operator: WINDSOR ENERGY GROUP LLC -
10081

Location ID: 315696

Rio Blanco County, CO

Aaron Trujillo
NW Reclamation Specialist
COGCC

Inspection Photos
Operator Name: WINDSOR ENERGY GROUP LLC - 10081
Location ID: 315696

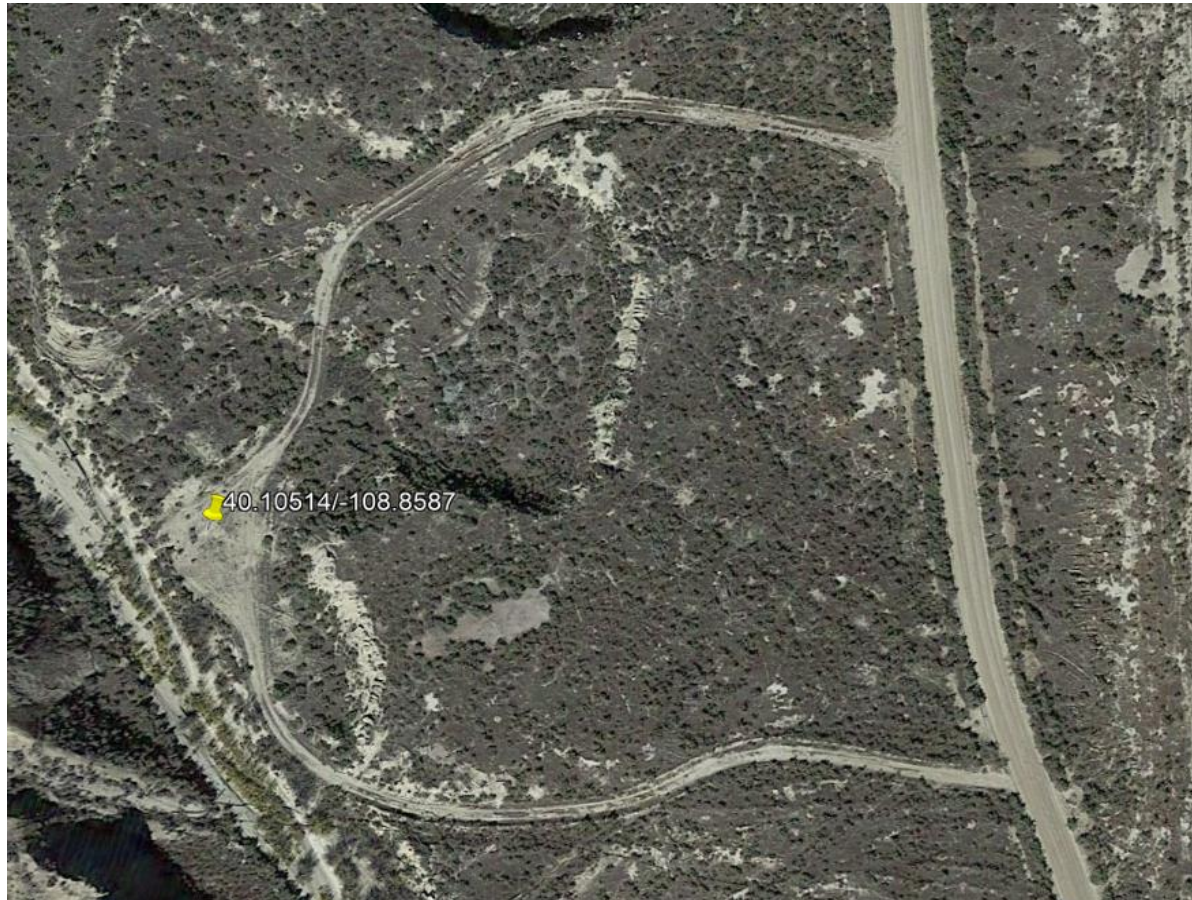


Photo 1: Current available Google Earth aerial imagery (2015). Photo shows aerial overview of the Location and access roads leading north and south of the Location.

Inspection Photos
Operator Name: WINDSOR ENERGY GROUP LLC - 10081
Location ID: 315696



Photo 2: Photo taken from the northern portion of the access road, facing west. Unable to observe evidence that reclamation has been conducted on access road pursuant to 1004 Rules.

Inspection Photos

Operator Name: WINDSOR ENERGY GROUP LLC - 10081

Location ID: 315696



Photo 3: Photo taken from the northern section of the access road. Photo shows gravel remaining on access road. Photo also shows inspector tested for compaction along the access road with a 16 inch shovel; Inspector was unable to easily penetrate the soil surface of the access road; Compaction concerns remain.

Inspection Photos
Operator Name: WINDSOR ENERGY GROUP LLC - 10081
Location ID: 315696



Photo 4: Photo taken from the northern access road, facing west. Photo shows access road has not been contoured or regraded.

Inspection Photos
Operator Name: WINDSOR ENERGY GROUP LLC - 10081
Location ID: 315696



Photo 5: Photo taken from the northern access road, facing west. Photo shows stormwater erosion remains evident; No BMPs appear to have been installed.

Inspection Photos
Operator Name: WINDSOR ENERGY GROUP LLC - 10081
Location ID: 315696



Photo 6: Photo taken from the northern access road, facing west. Photo shows access road has not been contoured or regraded.

Inspection Photos

Operator Name: WINDSOR ENERGY GROUP LLC - 10081

Location ID: 315696



Photo 7: Photo taken from the Location, facing southeast. Photo shows metal poles previously documented have not been removed per corrective actions. Photo is example of Trash debris/poles/barrels/etc... that was previously documented that have not been removed. See photo document #696201072 for additional information.



Inspection Photos
Operator Name: WINDSOR ENERGY GROUP LLC - 10081
Location ID: 315696



Photo 8: Photo taken from the Location facing west. Striations observed in the soil suggest additional revegetation activities appear to have been conducted. Top 4-6 inches of soil was unconsolidated, however, zones of compaction were observed below.

Inspection Photos

Operator Name: WINDSOR ENERGY GROUP LLC - 10081

Location ID: 315696



Photo 9: Photo taken from the Location. Photo shows inspector inspected the Location for compaction concerns; The top 4-6 inches of soil was unconsolidated, however, zones of compaction were observed below (yellow arrow).

Inspection Photos
Operator Name: WINDSOR ENERGY GROUP LLC - 10081
Location ID: 315696



Photo 10: Continued from photo 9. Photo shows a soil sample taken from the observed compaction zone with “Platy” soil structures. These structures are thin, flat plates of soil that lie horizontally and are usually found in compacted soils.

Inspection Photos

Operator Name: WINDSOR ENERGY GROUP LLC - 10081

Location ID: 315696



Photo 11: Photo taken from the Location facing east. Photo shows trash debris previously documented that has not been removed per corrective actions. Photo is example of Trash debris/poles/barrels/etc... that was previously documented that have not been removed. See photo document #696201072 for additional information.



Inspection Photos

Operator Name: WINDSOR ENERGY GROUP LLC - 10081

Location ID: 315696



Photo 12: Photo taken from the southern access road, facing south. Photo shows access road has not been contoured or regraded.



Inspection Photos
Operator Name: WINDSOR ENERGY GROUP LLC - 10081
Location ID: 315696



Photo 13: Photo taken from the southern section of the access road, facing east. Photo shows inspector tested for compaction along the access road with a 16 inch shovel; Inspector was unable to easily penetrate the soil surface of the access road; Compaction concerns remain.

Inspection Photos
Operator Name: WINDSOR ENERGY GROUP LLC - 10081
Location ID: 315696



Photo 14: Photo taken from the adjacent reference area. Photo shows inspector was able to easily penetrate the top 14-16 inches of soil on the reference. Photo is to compare/contrast the compaction concerns observed on the Location and access road.