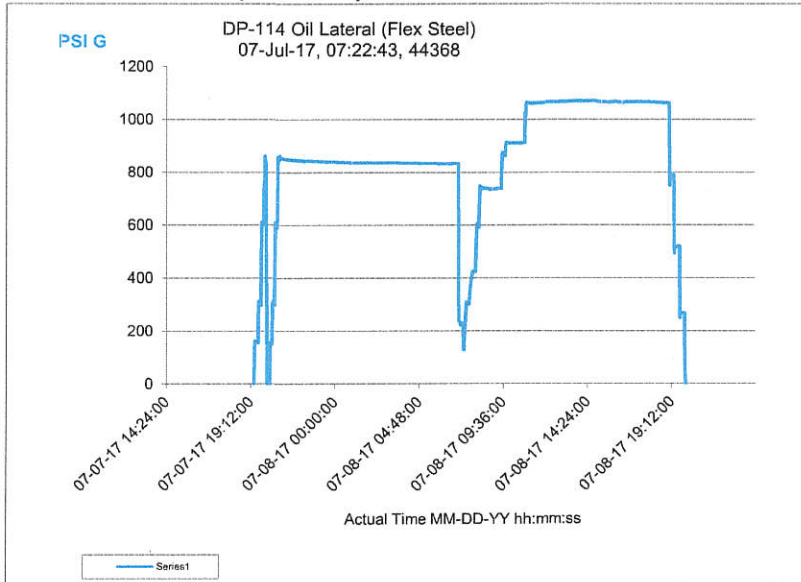


Data Collection Report

	Chassis	Left Scale	Right Scale
Serial Number	788218	786894	
Datatype		Lower	
Units		PSI G	

Lower Tested by Scott Zachary Test Passed



The pressure drop at 7:10 was a result of the oil and gas laterals equalizing, as they were jumpered together then isolated once the lower pressure Gas lateral reached its test pressure. (two separate tests, one fill point for both utilizing separate recording equipment)

Certificate of Calibration

Calibrations comply with
ISO/IEC 17025:2005 and
ANSI NCSL Z540-1-1994



Device Information

Module	10KPSI
Serial Number	786894
Water Column (@ 1 Atm)	4° C
Calibration Date	05 April 2017
Verification Date	03 May 2017
As Received Condition	New
As Left Condition	In Tolerance

Laboratory Conditions

Laboratory ambient conditions throughout this calibration	
Temperature	19 to 23° C
Humidity	20 to 60% RH

Definitions

Temperature Measured temperature of Device Under Test (DUT) during data collection.
Reference Reading True value according to our reference standards.
Indicated Reading Displayed reading from test unit.
Condition Pass or Fail.
Difference Indicated reading minus reference reading.
Relative Difference (Difference / reference reading) x 100.
Allowable Tolerance \pm according to manufacturer's specifications.
Pressure Medium Nitrogen.

Traceability Statement

Reference Standards used in this calibration are traceable to the National Institute of Standards and Technology of the United States (NIST) or other NMI.

System Expanded Uncertainty

System expanded uncertainty evaluation includes the calibration reference used and device under test and is calculated in accordance with ISO "Guide to the Expression of Uncertainty in Measurement" (GUM). The uncertainties reported represent expanded uncertainties using a coverage factor (*k*) to approximate a percentage (%) confidence level. *In Tolerance* or *Pass* conditions are based on test results falling within specified limits with no reduction by the uncertainty of the measurement. The results contained herein relate only to the item calibrated. Test methods defined by COI-054.

Coverage Factor (<i>k</i>)	2
Confidence Level (%)	~ 95

Traceable Reference Standards

Manufacturer	Calibration Reference Used	Serial Number	Report No.	Reference Cal. Due
DHI	PG7202 w/ 1 MPa/kg PC	875	1500189252-1	16 October 2017


Laboratory Representative
Troy Burns


Quality Representative
Bruce Hitt

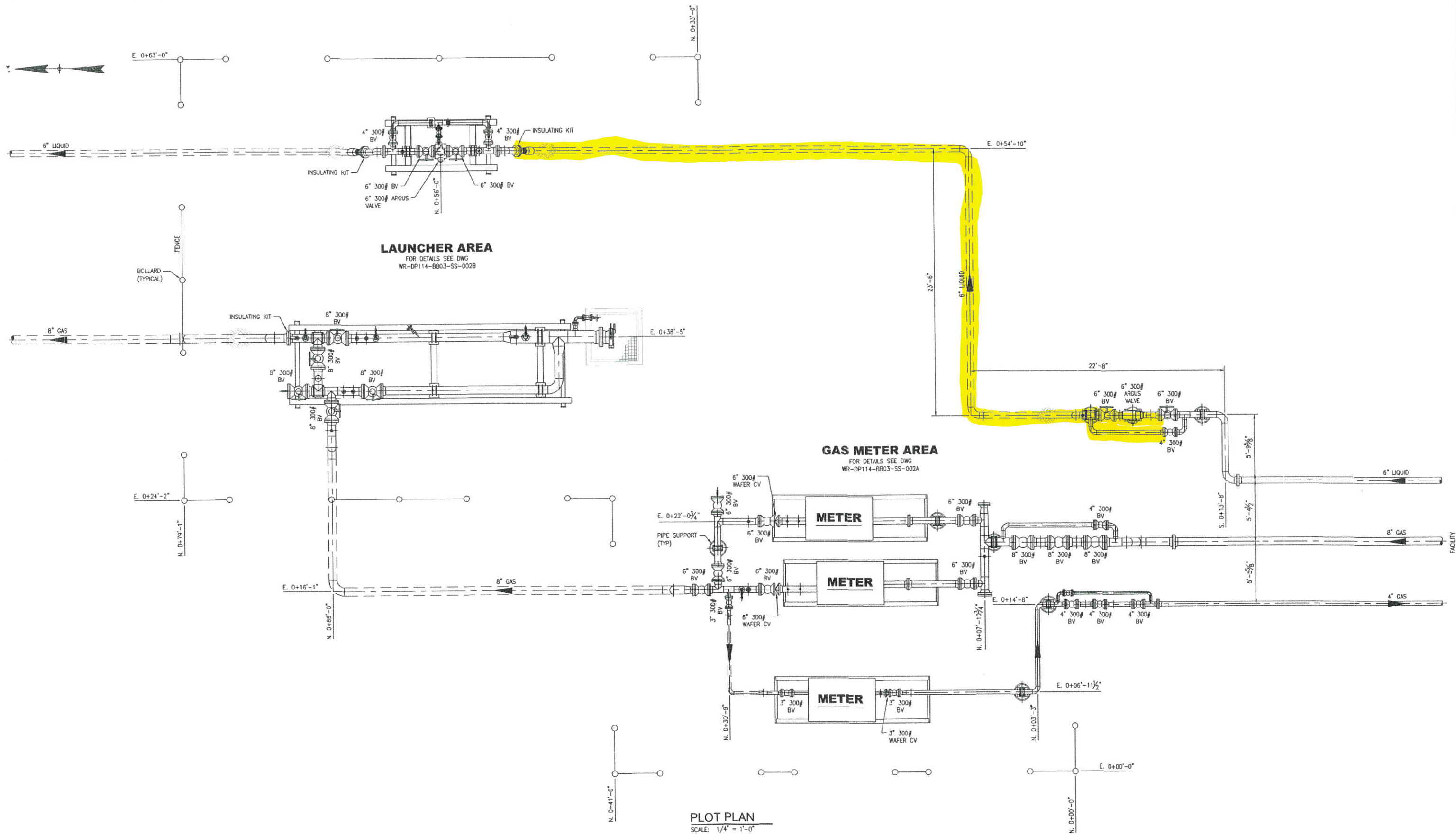
Test Results

As Left Results - (From 0 to 10000 psi) - Span multiplier: 1.00000

Temperature (Celsius)	Reference Reading (psi)	Indicated Reading (psi)	Deviation (psi)	Relative Deviation (% of Reading)	Allowable Tolerance (psi)	Expanded Uncertainty (psi)	Condition
-20	0.0	0	0.0		1.5		Pass
-20	2501.1	2501	-0.1	-0.004	1.5	0.77	Pass
-20	5003.2	5003	-0.2	-0.004	2.5	0.79	Pass
-20	7502.7	7503	0.3	0.004	3.8	0.81	Pass
-20	9943.9	9945	1.1	0.011	5.0	0.84	Pass
-20	10002.4	10003	0.6	0.006	5.0	0.84	Pass
-20	10147.7	10149	1.3	0.013	5.1	0.85	Pass
-20	7502.7	7503	0.3	0.004	3.8	0.81	Pass
10	0.0	0	0.0		1.5		Pass
10	2501.1	2501	-0.1	-0.004	1.5	0.77	Pass
10	5003.2	5003	-0.2	-0.004	2.5	0.79	Pass
10	7502.7	7503	0.3	0.004	3.8	0.81	Pass
10	9943.9	9944	0.1	0.001	5.0	0.84	Pass
10	10002.4	10003	0.6	0.006	5.0	0.84	Pass
10	10147.7	10148	0.3	0.003	5.1	0.85	Pass
10	7502.7	7503	0.3	0.004	3.8	0.81	Pass
20	0.0	0	0.0		1.5		Pass
20	2501.1	2501	-0.1	-0.004	1.5	0.77	Pass
20	5003.2	5003	-0.2	-0.004	2.5	0.79	Pass
20	7502.7	7503	0.3	0.004	3.8	0.81	Pass
20	9943.9	9944	0.1	0.001	5.0	0.84	Pass
20	10002.4	10003	0.6	0.006	5.0	0.84	Pass
20	10147.7	10148	0.3	0.003	5.1	0.85	Pass
20	7502.7	7503	0.3	0.004	3.8	0.81	Pass
30	0.0	0	0.0		1.5		Pass
30	2501.1	2501	-0.1	-0.004	1.5	0.77	Pass
30	5003.2	5004	0.8	0.016	2.5	0.79	Pass
30	7502.7	7503	0.3	0.004	3.8	0.81	Pass
30	9943.9	9944	0.1	0.001	5.0	0.84	Pass
30	10002.4	10003	0.6	0.006	5.0	0.84	Pass
30	10147.7	10148	0.3	0.003	5.1	0.85	Pass
30	7502.7	7503	0.3	0.004	3.8	0.81	Pass
50	0.0	0	0.0		1.5		Pass
50	2501.1	2501	-0.1	-0.004	1.5	0.77	Pass
50	5003.2	5003	-0.2	-0.004	2.5	0.79	Pass
50	7502.7	7503	0.3	0.004	3.8	0.81	Pass
50	9943.9	9945	1.1	0.011	5.0	0.84	Pass
50	10002.4	10003	0.6	0.006	5.0	0.84	Pass
50	10147.7	10148	0.3	0.003	5.1	0.85	Pass
50	7502.7	7503	0.3	0.004	3.8	0.81	Pass

Manufacturer's specifications: 0-30% of Full Scale: $\pm(0.015\%$ of Full Scale); 30-100% of Full Scale: $\pm(0.05\%$ of Reading).

FILE PATH: P:\ENGINEERING\PROJECTS\NOBLE\2017 DP114 (WELLS_RANCH)\09 PROJECT DRAWINGS\12 AS-BUILT\PPING\WR-DP114-BB03-SS-002-AB.DWG BY:CBURBON DATE:Aug 14, 2017 4:51pm



JTES:

REFERENCE DRAWINGS		REVISIONS						APPROVALS	
								SIGNATURE	DATE
								DRAWN	
								CHECKED	
								APPROVED	
WR-DP114-BB03-SS-002C-AB	AS-BUILT BB03 LAUNCHER SITE - SECTIONS								
WR-DP114-BB03-SS-002B-AB	AS-BUILT BB03 LAUNCHER SITE - DETAILED PLAN								
WR-DP114-BB03-SS-002A-AB	AS-BUILT BB03 LAUNCHER SITE - DETAILED PLAN	0	ISSUED FOR AS-BUILT	CSB	14-AUG-2017	DAN	14-AUG-2017	-	-
DWG NO.	TITLE	REV	DESCRIPTION	BY	DATE	CHK BY	CHK DATE	APR BY	APR DATE

WELLS RANCH GATHERING SYSTEM
DP114
AS-BUILT BB03 LAUNCHER SITE
PLOT PLAN

SCALE: AS NOTED	DRAWING NO. WR-DP114-BB03-SS-002-AB	REV. 0
--------------------	--	-----------