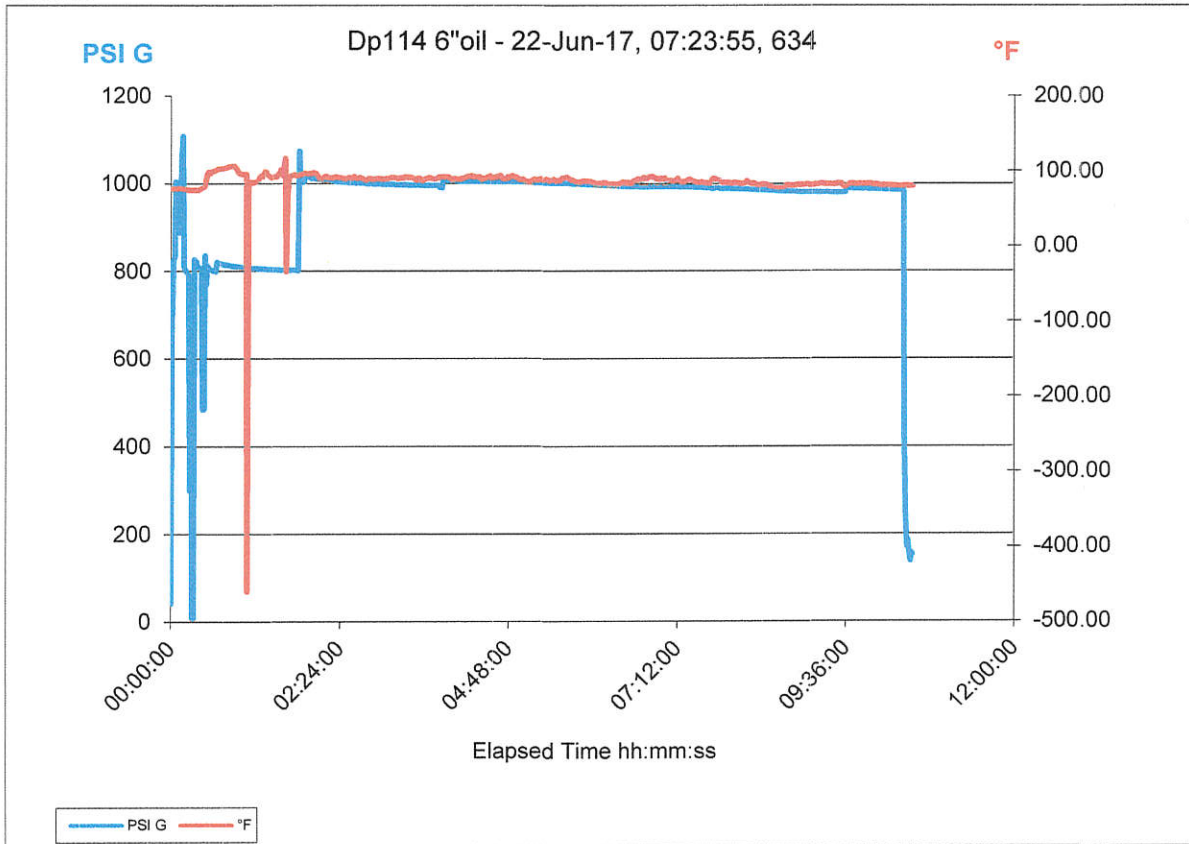


Data Collection Report

	Chassis	Left Scale	Right Scale
Serial Number	783202	695820	782250
Datatype		Lower	Upper
Units		PSI G	°F

Lower

Upper



	Chassis	Lower Module	Upper Module	BARO Module	Left Scale	Right Scale
Serial Number	783202	695820	782250		695820	782250
Model	NV	10KPSI	RTD100			
Message Store						
Userspan		1.00000	1.00000			
Offset						
Datatype						
Units		PSI G	°F		Lower PSI G	Upper °F
Tare						
Average						
User Factor						
User Offset						
User Resolution						
Firmware Version	R080016	R090009	R100006			
Calibration Due		13-Jan-18	23-Feb-18			
Run Index	5					
Run Start Time			22-Jun-17/07:23:55			
Run Duration			10 hours 33 minutes			
Run Tag			Dp114 6"oil			
Logging Interval	60.0					

Data Points				
Point #	Time	Left - PSI G	Right - °F	
1	00:00:00.0	42	76.04	
2	00:01:00.0	659	76.20	
3	00:02:00.0	826	76.14	
4	00:03:00.0	833	76.11	
5	00:04:00.0	1004	76.10	
6	00:05:00.0	991	76.19	
7	00:06:00.0	940	76.61	
8	00:07:00.0	888	76.95	
9	00:08:00.0	933	76.64	
10	00:09:00.0	1056	76.49	

11	00:10:00.0	1109	76.40
12	00:11:00.0	811	76.27
13	00:12:00.0	804	76.09
14	00:13:00.0	799	75.48
15	00:14:00.0	796	75.11
16	00:15:00.0	793	74.89
17	00:16:00.0	299	74.51
18	00:17:00.0	491	74.42
19	00:18:00.0	8	74.32
20	00:19:00.0	8	74.48
21	00:20:00.0	827	74.78
22	00:21:00.0	824	74.84
23	00:22:00.0	813	74.30
24	00:23:00.0	811	74.28
25	00:24:00.0	808	74.87
26	00:25:00.0	807	75.87
27	00:26:00.0	807	76.63
28	00:27:00.0	485	78.07
29	00:28:00.0	485	79.03
30	00:29:00.0	836	80.80
31	00:30:00.0	770	89.77
32	00:31:00.0	812	96.02
33	00:32:00.0	808	98.97
34	00:33:00.0	805	96.49
35	00:34:00.0	804	98.59
36	00:35:00.0	802	99.06
37	00:36:00.0	801	99.55
38	00:37:00.0	800	99.81
39	00:38:00.0	799	100.51
40	00:39:00.0	821	101.85
41	00:40:00.0	820	102.96
42	00:41:00.0	818	102.74
43	00:42:00.0	818	102.66
44	00:43:00.0	817	103.04
45	00:44:00.0	816	103.11
46	00:45:00.0	815	103.39
47	00:46:00.0	815	103.83

48	00:47:00.0	814	104.31
49	00:48:00.0	814	104.94
50	00:49:00.0	813	105.97
51	00:50:00.0	813	106.18
52	00:51:00.0	812	106.35
53	00:52:00.0	812	106.55
54	00:53:00.0	811	106.50
55	00:54:00.0	811	106.99
56	00:55:00.0	810	104.78
57	00:56:00.0	810	102.02
58	00:57:00.0	810	99.16
59	00:58:00.0	809	97.21
60	00:59:00.0	809	96.48
61	01:00:00.0	809	96.08
62	01:01:00.0	808	95.61
63	01:02:00.0	808	95.25
64	01:03:00.0	808	95.43
65	01:04:00.0	808	95.85
66	01:05:00.0	807	-459.67
67	01:06:00.0	807	86.05
68	01:07:00.0	807	84.83
69	01:08:00.0	807	84.91
70	01:09:00.0	806	84.70
71	01:10:00.0	806	84.47
72	01:11:00.0	806	84.94
73	01:12:00.0	806	85.48
74	01:13:00.0	806	86.13
75	01:14:00.0	806	86.66
76	01:15:00.0	805	90.36
77	01:16:00.0	805	91.84
78	01:17:00.0	805	93.74
79	01:18:00.0	805	92.97
80	01:19:00.0	805	96.90
81	01:20:00.0	805	99.45
82	01:21:00.0	805	98.43
83	01:22:00.0	804	96.31
84	01:23:00.0	804	94.56

85	01:24:00.0	804	93.00
86	01:25:00.0	804	92.05
87	01:26:00.0	804	91.28
88	01:27:00.0	804	91.76
89	01:28:00.0	803	92.31
90	01:29:00.0	803	92.46
91	01:30:00.0	803	92.57
92	01:31:00.0	803	95.90
93	01:32:00.0	802	97.77
94	01:33:00.0	802	100.94
95	01:34:00.0	802	102.33
96	01:35:00.0	802	93.57
97	01:36:00.0	802	106.33
98	01:37:00.0	802	116.97
99	01:38:00.0	802	-34.15
100	01:39:00.0	802	66.70
101	01:40:00.0	802	89.11
102	01:41:00.0	802	92.83
103	01:42:00.0	802	93.31
104	01:43:00.0	802	94.02
105	01:44:00.0	802	94.70
106	01:45:00.0	802	94.83
107	01:46:00.0	802	94.13
108	01:47:00.0	802	94.05
109	01:48:00.0	801	93.92
110	01:49:00.0	1074	94.51
111	01:50:00.0	1010	95.37
112	01:51:00.0	1006	95.11
113	01:52:00.0	1004	96.07
114	01:53:00.0	1003	96.85
115	01:54:00.0	1019	96.93
116	01:55:00.0	1017	96.48
117	01:56:00.0	1016	96.10
118	01:57:00.0	1015	96.27
119	01:58:00.0	1014	96.20
120	01:59:00.0	1013	96.70
121	02:00:00.0	1012	96.51

122	02:01:00.0	1012	97.55
123	02:02:00.0	1011	97.67
124	02:03:00.0	1011	97.07
125	02:04:00.0	1010	95.41
126	02:05:00.0	1010	93.15
127	02:06:00.0	1009	90.45
128	02:07:00.0	1009	89.75
129	02:08:00.0	1009	89.84
130	02:09:00.0	1008	90.20
131	02:10:00.0	1008	92.15
132	02:11:00.0	1007	93.10
133	02:12:00.0	1007	93.25
134	02:13:00.0	1007	91.34
135	02:14:00.0	1006	91.09
136	02:15:00.0	1006	90.70
137	02:16:00.0	1006	90.64
138	02:17:00.0	1006	90.87
139	02:18:00.0	1006	90.97
140	02:19:00.0	1005	92.15
141	02:20:00.0	1005	92.54
142	02:21:00.0	1005	92.06
143	02:22:00.0	1004	91.45
144	02:23:00.0	1004	91.18
145	02:24:00.0	1004	91.26
146	02:25:00.0	1004	91.33
147	02:26:00.0	1004	90.51
148	02:27:00.0	1003	90.33
149	02:28:00.0	1003	89.50
150	02:29:00.0	1003	89.74
151	02:30:00.0	1003	90.67
152	02:31:00.0	1003	91.07
153	02:32:00.0	1002	91.20
154	02:33:00.0	1002	91.06
155	02:34:00.0	1002	90.51
156	02:35:00.0	1002	91.64
157	02:36:00.0	1002	92.69
158	02:37:00.0	1002	91.60

159	02:38:00.0	1001	90.31
160	02:39:00.0	1001	90.79
161	02:40:00.0	1001	91.30
162	02:41:00.0	1001	91.65
163	02:42:00.0	1001	90.87
164	02:43:00.0	1001	90.37
165	02:44:00.0	1001	88.93
166	02:45:00.0	1001	88.78
167	02:46:00.0	1000	87.99
168	02:47:00.0	1000	88.66
169	02:48:00.0	1000	89.81
170	02:49:00.0	1000	89.91
171	02:50:00.0	1000	89.97
172	02:51:00.0	1000	88.54
173	02:52:00.0	1000	88.46
174	02:53:00.0	999	89.78
175	02:54:00.0	999	89.59
176	02:55:00.0	999	89.54
177	02:56:00.0	999	90.41
178	02:57:00.0	999	90.20
179	02:58:00.0	999	89.52
180	02:59:00.0	999	89.61
181	03:00:00.0	999	89.30
182	03:01:00.0	998	88.88
183	03:02:00.0	998	89.29
184	03:03:00.0	998	90.09
185	03:04:00.0	998	90.55
186	03:05:00.0	998	90.04
187	03:06:00.0	998	90.31
188	03:07:00.0	998	91.39
189	03:08:00.0	998	91.17
190	03:09:00.0	998	91.15
191	03:10:00.0	998	91.47
192	03:11:00.0	997	91.26
193	03:12:00.0	997	90.90
194	03:13:00.0	997	89.96
195	03:14:00.0	997	90.14

196	03:15:00.0	997	90.74
197	03:16:00.0	997	90.64
198	03:17:00.0	997	90.97
199	03:18:00.0	997	90.82
200	03:19:00.0	997	92.23
201	03:20:00.0	997	92.54
202	03:21:00.0	997	91.48
203	03:22:00.0	996	92.03
204	03:23:00.0	996	91.73
205	03:24:00.0	996	91.79
206	03:25:00.0	996	91.41
207	03:26:00.0	996	90.61
208	03:27:00.0	996	90.54
209	03:28:00.0	996	88.70
210	03:29:00.0	996	87.70
211	03:30:00.0	996	90.37
212	03:31:00.0	996	90.19
213	03:32:00.0	996	90.39
214	03:33:00.0	996	88.44
215	03:34:00.0	995	87.15
216	03:35:00.0	995	87.78
217	03:36:00.0	995	88.92
218	03:37:00.0	995	89.63
219	03:38:00.0	995	90.71
220	03:39:00.0	995	91.02
221	03:40:00.0	995	90.87
222	03:41:00.0	995	91.02
223	03:42:00.0	995	90.46
224	03:43:00.0	995	90.55
225	03:44:00.0	995	90.00
226	03:45:00.0	995	89.29
227	03:46:00.0	995	90.11
228	03:47:00.0	995	90.64
229	03:48:00.0	995	91.89
230	03:49:00.0	990	91.13
231	03:50:00.0	990	91.44
232	03:51:00.0	990	91.89

233	03:52:00.0	1008	91.93
234	03:53:00.0	1007	92.20
235	03:54:00.0	1007	92.21
236	03:55:00.0	1007	92.59
237	03:56:00.0	1006	92.24
238	03:57:00.0	1006	91.56
239	03:58:00.0	1006	89.92
240	03:59:00.0	1006	88.46
241	04:00:00.0	1006	87.85
242	04:01:00.0	1006	90.11
243	04:02:00.0	1006	89.82
244	04:03:00.0	1006	89.55
245	04:04:00.0	1005	88.97
246	04:05:00.0	1006	88.61
247	04:06:00.0	1005	88.60
248	04:07:00.0	1005	89.96
249	04:08:00.0	1005	90.15
250	04:09:00.0	1005	89.92
251	04:10:00.0	1005	90.58
252	04:11:00.0	1005	91.92
253	04:12:00.0	1005	92.19
254	04:13:00.0	1005	92.95
255	04:14:00.0	1005	92.70
256	04:15:00.0	1005	92.88
257	04:16:00.0	1005	94.10
258	04:17:00.0	1005	92.08
259	04:18:00.0	1005	92.08
260	04:19:00.0	1005	92.96
261	04:20:00.0	1005	92.03
262	04:21:00.0	1005	92.23
263	04:22:00.0	1005	91.99
264	04:23:00.0	1005	92.27
265	04:24:00.0	1005	89.67
266	04:25:00.0	1005	88.69
267	04:26:00.0	1005	90.90
268	04:27:00.0	1005	89.76
269	04:28:00.0	1005	90.47

270	04:29:00.0	1005	91.64
271	04:30:00.0	1004	92.46
272	04:31:00.0	1005	91.43
273	04:32:00.0	1004	93.61
274	04:33:00.0	1004	90.85
275	04:34:00.0	1004	90.74
276	04:35:00.0	1004	91.21
277	04:36:00.0	1004	90.99
278	04:37:00.0	1004	92.57
279	04:38:00.0	1004	91.71
280	04:39:00.0	1004	93.13
281	04:40:00.0	1004	93.39
282	04:41:00.0	1004	93.65
283	04:42:00.0	1004	90.65
284	04:43:00.0	1004	89.39
285	04:44:00.0	1004	90.01
286	04:45:00.0	1004	89.33
287	04:46:00.0	1004	90.41
288	04:47:00.0	1004	92.39
289	04:48:00.0	1004	90.29
290	04:49:00.0	1004	92.00
291	04:50:00.0	1004	93.51
292	04:51:00.0	1004	94.31
293	04:52:00.0	1004	93.29
294	04:53:00.0	1004	91.67
295	04:54:00.0	1004	91.91
296	04:55:00.0	1004	91.66
297	04:56:00.0	1004	89.45
298	04:57:00.0	1004	88.58
299	04:58:00.0	1004	88.29
300	04:59:00.0	1004	88.62
301	05:00:00.0	1004	89.44
302	05:01:00.0	1004	88.39
303	05:02:00.0	1004	87.06
304	05:03:00.0	1004	86.69
305	05:04:00.0	1003	85.60
306	05:05:00.0	1003	85.85

307	05:06:00.0	1003	85.17
308	05:07:00.0	1003	86.16
309	05:08:00.0	1003	87.67
310	05:09:00.0	1003	88.62
311	05:10:00.0	1002	89.56
312	05:11:00.0	1002	88.12
313	05:12:00.0	1002	88.22
314	05:13:00.0	1002	87.92
315	05:14:00.0	1002	89.10
316	05:15:00.0	1002	89.73
317	05:16:00.0	1002	88.12
318	05:17:00.0	1002	88.18
319	05:18:00.0	1002	88.45
320	05:19:00.0	1002	89.46
321	05:20:00.0	1002	89.41
322	05:21:00.0	1002	88.48
323	05:22:00.0	1002	87.18
324	05:23:00.0	1002	87.57
325	05:24:00.0	1001	88.19
326	05:25:00.0	1002	89.22
327	05:26:00.0	1001	89.74
328	05:27:00.0	1001	88.55
329	05:28:00.0	1001	86.89
330	05:29:00.0	1001	87.36
331	05:30:00.0	1001	87.36
332	05:31:00.0	1001	87.41
333	05:32:00.0	1001	88.56
334	05:33:00.0	1001	90.46
335	05:34:00.0	1001	91.41
336	05:35:00.0	1001	91.30
337	05:36:00.0	1001	91.65
338	05:37:00.0	1001	91.86
339	05:38:00.0	1001	91.69
340	05:39:00.0	1001	90.76
341	05:40:00.0	1001	89.64
342	05:41:00.0	1000	88.74
343	05:42:00.0	1000	88.17

344	05:43:00.0	1000	88.09
345	05:44:00.0	1000	87.35
346	05:45:00.0	1000	85.92
347	05:46:00.0	1000	86.03
348	05:47:00.0	1000	85.47
349	05:48:00.0	1000	85.67
350	05:49:00.0	1000	85.99
351	05:50:00.0	999	86.47
352	05:51:00.0	999	86.62
353	05:52:00.0	999	86.95
354	05:53:00.0	999	87.26
355	05:54:00.0	999	86.68
356	05:55:00.0	999	86.46
357	05:56:00.0	998	86.43
358	05:57:00.0	998	86.63
359	05:58:00.0	998	86.34
360	05:59:00.0	998	85.47
361	06:00:00.0	998	84.92
362	06:01:00.0	998	84.69
363	06:02:00.0	998	83.94
364	06:03:00.0	997	83.56
365	06:04:00.0	997	83.65
366	06:05:00.0	997	83.37
367	06:06:00.0	997	83.65
368	06:07:00.0	997	84.18
369	06:08:00.0	997	84.66
370	06:09:00.0	997	84.44
371	06:10:00.0	996	84.52
372	06:11:00.0	996	84.20
373	06:12:00.0	996	83.02
374	06:13:00.0	996	82.69
375	06:14:00.0	996	82.46
376	06:15:00.0	995	82.72
377	06:16:00.0	995	82.97
378	06:17:00.0	995	83.26
379	06:18:00.0	995	82.91
380	06:19:00.0	995	82.52

381	06:20:00.0	995	82.75
382	06:21:00.0	995	83.09
383	06:22:00.0	994	83.78
384	06:23:00.0	994	83.43
385	06:24:00.0	994	84.69
386	06:25:00.0	994	85.87
387	06:26:00.0	994	85.60
388	06:27:00.0	994	85.36
389	06:28:00.0	994	84.03
390	06:29:00.0	994	85.39
391	06:30:00.0	993	85.10
392	06:31:00.0	993	83.86
393	06:32:00.0	993	83.34
394	06:33:00.0	993	84.52
395	06:34:00.0	993	86.84
396	06:35:00.0	993	86.77
397	06:36:00.0	993	87.71
398	06:37:00.0	993	89.14
399	06:38:00.0	993	90.04
400	06:39:00.0	993	89.03
401	06:40:00.0	993	87.23
402	06:41:00.0	992	87.75
403	06:42:00.0	993	91.26
404	06:43:00.0	992	92.08
405	06:44:00.0	993	90.99
406	06:45:00.0	993	90.70
407	06:46:00.0	992	90.44
408	06:47:00.0	993	91.54
409	06:48:00.0	993	92.96
410	06:49:00.0	993	92.58
411	06:50:00.0	993	92.77
412	06:51:00.0	993	92.88
413	06:52:00.0	993	91.87
414	06:53:00.0	993	90.42
415	06:54:00.0	993	90.14
416	06:55:00.0	993	89.84
417	06:56:00.0	993	88.46

418	06:57:00.0	993	90.28
419	06:58:00.0	993	90.84
420	06:59:00.0	993	89.65
421	07:00:00.0	993	88.81
422	07:01:00.0	993	91.12
423	07:02:00.0	993	87.65
424	07:03:00.0	993	87.86
425	07:04:00.0	993	87.48
426	07:05:00.0	993	87.44
427	07:06:00.0	993	87.64
428	07:07:00.0	993	86.52
429	07:08:00.0	993	86.32
430	07:09:00.0	993	86.88
431	07:10:00.0	993	87.09
432	07:11:00.0	993	88.99
433	07:12:00.0	993	90.56
434	07:13:00.0	993	88.33
435	07:14:00.0	992	86.85
436	07:15:00.0	992	85.64
437	07:16:00.0	992	85.31
438	07:17:00.0	992	85.48
439	07:18:00.0	992	85.97
440	07:19:00.0	992	86.68
441	07:20:00.0	992	87.94
442	07:21:00.0	992	88.71
443	07:22:00.0	992	88.87
444	07:23:00.0	992	88.94
445	07:24:00.0	992	87.99
446	07:25:00.0	992	86.98
447	07:26:00.0	992	86.09
448	07:27:00.0	991	85.89
449	07:28:00.0	991	85.58
450	07:29:00.0	991	85.16
451	07:30:00.0	991	85.22
452	07:31:00.0	991	85.03
453	07:32:00.0	991	85.49
454	07:33:00.0	991	85.50

455	07:34:00.0	991	85.12
456	07:35:00.0	990	84.35
457	07:36:00.0	990	84.13
458	07:37:00.0	990	84.40
459	07:38:00.0	990	84.40
460	07:39:00.0	990	83.66
461	07:40:00.0	990	84.49
462	07:41:00.0	990	87.59
463	07:42:00.0	989	90.22
464	07:43:00.0	989	90.45
465	07:44:00.0	990	89.36
466	07:45:00.0	990	89.10
467	07:46:00.0	990	88.84
468	07:47:00.0	990	88.41
469	07:48:00.0	989	86.84
470	07:49:00.0	989	85.70
471	07:50:00.0	989	84.73
472	07:51:00.0	989	84.95
473	07:52:00.0	989	85.08
474	07:53:00.0	989	84.76
475	07:54:00.0	989	84.21
476	07:55:00.0	989	85.10
477	07:56:00.0	989	84.72
478	07:57:00.0	989	83.92
479	07:58:00.0	989	83.60
480	07:59:00.0	988	84.11
481	08:00:00.0	988	84.74
482	08:01:00.0	988	84.63
483	08:02:00.0	988	84.27
484	08:03:00.0	988	84.38
485	08:04:00.0	988	83.98
486	08:05:00.0	988	83.82
487	08:06:00.0	987	83.52
488	08:07:00.0	987	83.49
489	08:08:00.0	987	83.68
490	08:09:00.0	987	83.90
491	08:10:00.0	987	84.80

492	08:11:00.0	987	87.20
493	08:12:00.0	987	86.38
494	08:13:00.0	987	84.70
495	08:14:00.0	986	83.78
496	08:15:00.0	986	83.40
497	08:16:00.0	986	82.98
498	08:17:00.0	986	84.32
499	08:18:00.0	986	83.82
500	08:19:00.0	986	82.87
501	08:20:00.0	986	82.44
502	08:21:00.0	986	81.54
503	08:22:00.0	985	81.61
504	08:23:00.0	985	82.06
505	08:24:00.0	985	82.13
506	08:25:00.0	985	82.11
507	08:26:00.0	985	82.30
508	08:27:00.0	985	82.39
509	08:28:00.0	985	82.30
510	08:29:00.0	985	81.94
511	08:30:00.0	984	80.22
512	08:31:00.0	984	80.26
513	08:32:00.0	984	79.76
514	08:33:00.0	984	79.62
515	08:34:00.0	984	79.73
516	08:35:00.0	984	79.50
517	08:36:00.0	984	79.15
518	08:37:00.0	983	78.85
519	08:38:00.0	983	78.56
520	08:39:00.0	983	78.61
521	08:40:00.0	983	78.61
522	08:41:00.0	983	78.96
523	08:42:00.0	983	79.17
524	08:43:00.0	982	79.03
525	08:44:00.0	982	80.65
526	08:45:00.0	982	81.49
527	08:46:00.0	982	82.25
528	08:47:00.0	982	80.82

529	08:48:00.0	982	80.92
530	08:49:00.0	982	80.85
531	08:50:00.0	982	80.87
532	08:51:00.0	982	80.80
533	08:52:00.0	982	81.20
534	08:53:00.0	982	81.36
535	08:54:00.0	982	81.92
536	08:55:00.0	981	82.56
537	08:56:00.0	981	82.03
538	08:57:00.0	981	81.63
539	08:58:00.0	981	82.08
540	08:59:00.0	981	81.87
541	09:00:00.0	981	82.33
542	09:01:00.0	981	82.19
543	09:02:00.0	981	82.33
544	09:03:00.0	981	82.92
545	09:04:00.0	981	82.41
546	09:05:00.0	981	82.17
547	09:06:00.0	981	81.93
548	09:07:00.0	981	81.94
549	09:08:00.0	980	81.83
550	09:09:00.0	980	82.34
551	09:10:00.0	980	82.60
552	09:11:00.0	980	82.08
553	09:12:00.0	980	82.13
554	09:13:00.0	980	83.12
555	09:14:00.0	980	83.74
556	09:15:00.0	980	83.58
557	09:16:00.0	980	83.42
558	09:17:00.0	980	82.91
559	09:18:00.0	980	83.04
560	09:19:00.0	980	82.82
561	09:20:00.0	980	82.66
562	09:21:00.0	980	82.61
563	09:22:00.0	979	82.84
564	09:23:00.0	979	82.63
565	09:24:00.0	979	82.68

566	09:25:00.0	979	82.47
567	09:26:00.0	979	82.74
568	09:27:00.0	979	82.81
569	09:28:00.0	979	83.10
570	09:29:00.0	979	83.49
571	09:30:00.0	979	83.73
572	09:31:00.0	979	83.50
573	09:32:00.0	979	83.52
574	09:33:00.0	979	81.03
575	09:34:00.0	979	79.31
576	09:35:00.0	979	79.12
577	09:36:00.0	989	79.72
578	09:37:00.0	989	80.87
579	09:38:00.0	989	82.68
580	09:39:00.0	989	83.35
581	09:40:00.0	989	83.28
582	09:41:00.0	989	82.95
583	09:42:00.0	989	83.19
584	09:43:00.0	988	83.61
585	09:44:00.0	988	83.23
586	09:45:00.0	988	82.71
587	09:46:00.0	988	82.75
588	09:47:00.0	988	83.41
589	09:48:00.0	988	83.26
590	09:49:00.0	988	83.09
591	09:50:00.0	988	82.89
592	09:51:00.0	988	83.03
593	09:52:00.0	988	82.92
594	09:53:00.0	988	82.61
595	09:54:00.0	988	83.03
596	09:55:00.0	987	83.54
597	09:56:00.0	987	82.97
598	09:57:00.0	987	82.92
599	09:58:00.0	987	82.93
600	09:59:00.0	987	82.74
601	10:00:00.0	987	82.42
602	10:01:00.0	987	82.49

603	10:02:00.0	987	82.29
604	10:03:00.0	987	82.15
605	10:04:00.0	987	81.53
606	10:05:00.0	987	81.30
607	10:06:00.0	987	81.14
608	10:07:00.0	987	80.93
609	10:08:00.0	986	81.32
610	10:09:00.0	986	81.49
611	10:10:00.0	986	80.99
612	10:11:00.0	986	81.08
613	10:12:00.0	986	81.13
614	10:13:00.0	986	81.04
615	10:14:00.0	986	80.83
616	10:15:00.0	986	80.94
617	10:16:00.0	985	80.64
618	10:17:00.0	985	80.64
619	10:18:00.0	985	80.51
620	10:19:00.0	985	80.40
621	10:20:00.0	985	80.39
622	10:21:00.0	985	80.12
623	10:22:00.0	985	80.12
624	10:23:00.0	985	79.95
625	10:24:00.0	984	80.18
626	10:25:00.0	984	80.41
627	10:26:00.0	419	80.44
628	10:27:00.0	247	80.29
629	10:28:00.0	171	80.39
630	10:29:00.0	187	80.50
631	10:30:00.0	158	80.10
632	10:31:00.0	138	80.11
633	10:32:00.0	158	80.10
634	10:33:00.0	154	80.15



Crystal Engineering Corporation
708 Fiero Lane, Suite 9
San Luis Obispo, CA 93401

TEL 805.595.5477 - FAX 805.595.5466
crystalengineering.net

Report Number: 258332

Certificate of Calibration

Calibrations comply with
ISO/IEC 17025:2005 and
ANSI NCSL Z540-1-1994



Device Information

Module	10KPSI
Serial Number	695820
Water Column (@ 1 Atm)	4° C
Calibration Date	22 December 2016
Verification Date	13 January 2017
As Received Condition	New
As Left Condition	In Tolerance

Laboratory Conditions

Laboratory ambient conditions throughout this calibration

Temperature	19 to 23° C
Humidity	20 to 60% RH

Definitions

Temperature Measured temperature of Device Under Test (DUT) during data collection.
Reference Reading True value according to our reference standards.
Indicated Reading Displayed reading from test unit.
Condition Pass or Fail.
Difference Indicated reading minus reference reading.
Relative Difference (Difference / reference reading) x 100.
Allowable Tolerance \pm according to manufacturer's specifications.
Pressure Medium Nitrogen.

Traceability Statement

Reference Standards used in this calibration are traceable to the National Institute of Standards and Technology of the United States (NIST) or other NMI.

System Expanded Uncertainty

System expanded uncertainty evaluation includes the calibration reference used and device under test and is calculated in accordance with ISO "Guide to the Expression of Uncertainty in Measurement" (GUM). The uncertainties reported represent expanded uncertainties using a coverage factor (k) to approximate a percentage (%) confidence level. *In Tolerance* or *Pass* conditions are based on test results falling within specified limits with no reduction by the uncertainty of the measurement. The results contained herein relate only to the item calibrated. Test methods defined by COI-054.

Coverage Factor (k)	2
Confidence Level (%)	~ 95

Traceable Reference Standards

Manufacturer	Calibration Reference Used	Serial Number	Report No.	Reference Cal. Due
DHI	PG7202 w/ 1 MPa/kg PC	2055	1500204953	14 September 2018


Laboratory Representative
Troy Burns

Quality Representative

Bruce Hitt

This certificate shall not be reproduced except in full, without written approval of Crystal Engineering Corporation, a part of Ametek, Incorporated.

Crystal Engineering Corporation, is ISO 9001:2008 Quality Management System Certified by Intertek, Certificate No. QMS-1058.

AMETEK
TEST & CALIBRATION INSTRUMENTS

Page 1 of 2

Test Results

As Left Results - (From 0 to 10000 psi) - Span multiplier: 1.00000

Temperature (Celsius)	Reference Reading (psi)	Indicated Reading (psi)	Deviation (psi)	Relative Deviation (% of Reading)	Allowable Tolerance (psi)	Expanded Uncertainty (psi)	Condition
-20	0.0	0	0.0		1.5		Pass
-20	2498.0	2498	0.0	0.000	1.5	0.77	Pass
-20	5000.3	5001	0.7	0.014	2.5	0.79	Pass
-20	7498.4	7499	0.6	0.008	3.7	0.81	Pass
-20	9953.7	9955	1.3	0.013	5.0	0.84	Pass
-20	9997.9	9999	1.1	0.011	5.0	0.84	Pass
-20	10143.1	10144	0.9	0.009	5.1	0.84	Pass
-20	7498.4	7498	-0.4	-0.005	3.7	0.81	Pass
10	0.0	0	0.0		1.5		Pass
10	2498.0	2498	0.0	0.000	1.5	0.77	Pass
10	5000.3	5001	0.7	0.014	2.5	0.79	Pass
10	7498.4	7498	-0.4	-0.005	3.7	0.81	Pass
10	9953.7	9954	0.3	0.003	5.0	0.84	Pass
10	9997.9	9998	0.1	0.001	5.0	0.84	Pass
10	10143.1	10144	0.9	0.009	5.1	0.84	Pass
10	7498.4	7498	-0.4	-0.005	3.7	0.81	Pass
20	0.0	0	0.0		1.5		Pass
20	2498.0	2498	0.0	0.000	1.5	0.77	Pass
20	5000.3	5001	0.7	0.014	2.5	0.79	Pass
20	7498.4	7499	0.6	0.008	3.7	0.81	Pass
20	9953.7	9954	0.3	0.003	5.0	0.84	Pass
20	9997.9	9999	1.1	0.011	5.0	0.84	Pass
20	10143.1	10144	0.9	0.009	5.1	0.84	Pass
20	7498.4	7498	-0.4	-0.005	3.7	0.81	Pass
30	0.0	0	0.0		1.5		Pass
30	2498.0	2498	0.0	0.000	1.5	0.77	Pass
30	5000.3	5000	-0.3	-0.006	2.5	0.79	Pass
30	7498.4	7498	-0.4	-0.005	3.7	0.81	Pass
30	9953.7	9954	0.3	0.003	5.0	0.84	Pass
30	9997.9	9998	0.1	0.001	5.0	0.84	Pass
30	10143.0	10143	0.0	0.000	5.1	0.84	Pass
30	7498.4	7498	-0.4	-0.005	3.7	0.81	Pass
50	0.0	0	0.0		1.5		Pass
50	2498.0	2498	0.0	0.000	1.5	0.77	Pass
50	5000.3	5001	0.7	0.014	2.5	0.79	Pass
50	7498.4	7499	0.6	0.008	3.7	0.81	Pass
50	9953.7	9955	1.3	0.013	5.0	0.84	Pass
50	9997.8	9999	1.2	0.012	5.0	0.84	Pass
50	10143.0	10144	1.0	0.010	5.1	0.84	Pass
50	7498.4	7498	-0.4	-0.005	3.7	0.81	Pass

Manufacturer's specifications: 0-30% of Full Scale: $\pm(0.015\%$ of Full Scale); 30-100% of Full Scale: $\pm(0.05\%$ of Reading).



Crystal Engineering Corporation
708 Fiero Lane, Suite 9
San Luis Obispo, CA 93401

TEL 805.595.5477 • FAX 805.595.5466
crystalengineering.net

Report Number: 261714

Certificate of Calibration

Calibrations comply with
ISO/IEC 17025:2005 and
ANSI NCSL Z540-1-1994



Device Information

Module	RTD100
Serial Number	782250
Calibration Date	01 February 2017
Verification Date	23 February 2017
As Received Condition	New
As Left Condition	In Tolerance

Laboratory Conditions

Laboratory ambient conditions throughout this calibration

Temperature	19 to 23° C
Humidity	20 to 60% RH

Definitions

Temperature Measured temperature of Device Under Test (DUT) during data collection.

Reference Reading True value according to our reference standards.

Indicated Reading Displayed reading from test unit.

Condition Pass or Fail.

Difference Indicated reading minus reference reading.

Relative Difference (Difference / reference reading) x 100.

Allowable Tolerance \pm according to manufacturer's specifications.

Traceability Statement

Reference Standards used in this calibration are traceable to the National Institute of Standards and Technology of the United States (NIST) or other NMI.

System Expanded Uncertainty

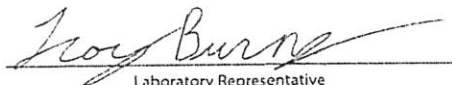
System expanded uncertainty evaluation includes the calibration reference used and device under test and is calculated in accordance with ISO "Guide to the Expression of Uncertainty in Measurement" (GUM). The uncertainties reported represent expanded uncertainties using a coverage factor (*k*) to approximate a percentage (%) confidence level. *In Tolerance* or *Pass* conditions are based on test results falling within specified limits with no reduction by the uncertainty of the measurement. The results contained herein relate only to the item calibrated. Test methods defined by COI-054.

Coverage Factor (<i>k</i>)	2
Confidence Level (%)	~ 95

Traceable Reference Standards

Manufacturer	Calibration Reference Used
HP	Analog System-Ohm 2823A00569

Serial Number	Report No.	Reference Cal. Due
2823A00569	8067315667	23 August 2017


Laboratory Representative

Troy Burns

Quality Representative

Bruce Hitt

This certificate shall not be reproduced except in full, without written approval of Crystal Engineering Corporation, a part of Ametek, Incorporated.

Crystal Engineering Corporation, is ISO 9001:2008 Quality Management System Certified by Intertek, Certificate No. QMS-1058.



TEST & CALIBRATION INSTRUMENTS

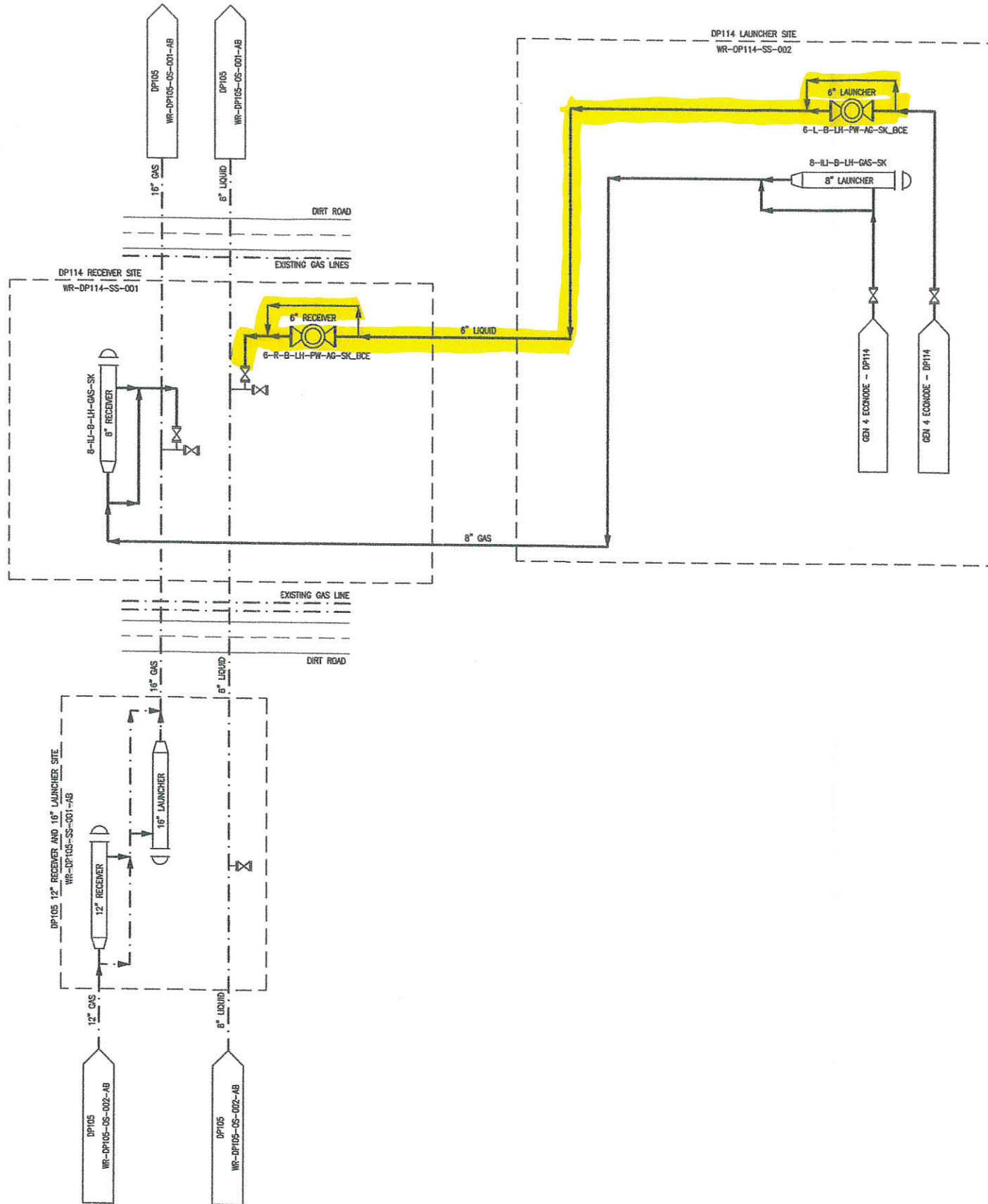
Page 1 of 2

Test Results


As Left Results - (From 0 to 400 Ohms) - Span multiplier: 1.00000

Temperature (Celsius)	Reference Reading (Ohms)	Indicated Reading (Ohms)	Deviation (Ohms)	Relative Deviation (% of Reading)	Allowable Tolerance (Ohms)	Expanded Uncertainty (Ohms)	Condition
-20	0.000	0.00	0.000		0.020		Pass
-20	100.024	100.02	-0.004	-0.004	0.035	0.012	Pass
-20	200.277	200.28	0.003	0.001	0.050	0.0069	Pass
-20	398.576	398.58	0.004	0.001	0.080	0.0073	Pass
10	0.000	0.00	0.000		0.020		Pass
10	100.024	100.02	-0.004	-0.004	0.035	0.012	Pass
10	200.278	200.28	0.002	0.001	0.050	0.0069	Pass
10	398.576	398.57	-0.006	-0.002	0.080	0.0073	Pass
20	0.000	0.01	0.010		0.020		Pass
20	100.024	100.02	-0.004	-0.004	0.035	0.012	Pass
20	200.278	200.28	0.002	0.001	0.050	0.0069	Pass
20	398.575	398.57	-0.005	-0.001	0.080	0.0073	Pass
30	0.000	0.01	0.010		0.020		Pass
30	100.024	100.02	-0.004	-0.004	0.035	0.012	Pass
30	200.277	200.27	-0.007	-0.003	0.050	0.0069	Pass
30	398.575	398.57	-0.005	-0.001	0.080	0.0073	Pass
50	0.000	0.00	0.000		0.020		Pass
50	100.024	100.02	-0.004	-0.004	0.035	0.012	Pass
50	200.279	200.28	0.001	0.000	0.050	0.0069	Pass
50	398.580	398.58	0.000	0.000	0.080	0.0073	Pass

Manufacturer's specifications: 0% to 100% of Full Scale: $\pm(0.015\%$ of Reading + 0.02 Ohms)



KEY	
	AS-BUILT PIPELINE
	ADJACENT OR CONNECTING PROJECT
	FUTURE PROJECT
	EXISTING
	SITE LIMITS
	ROAD/HIGHWAY
	RAILROAD
	DITCH/CANAL/RIVER
	BORE LENGTH

REFERENCE DRAWINGS		REVISIONS								APPROVALS			<div> WELLS RANCH GATHERING SYSTEM DP114 B803 OPERATIONAL SCHEMATIC</div>		
WR-DP105-OS-001-AB WR-DP105-OS-002-AB WR-DP114-SS-002 WR-DP114-SS-001 6-L-B-LH-PW-AG-SK_BCE 6-R-B-LH-PW-AG-SK_BCE 8-IL-B-LH-GAS-SK DWG NO.	DP105 OPERATIONAL SCHEMATIC DP105 OPERATIONAL SCHEMATIC DP114 B803 LAUNCHER SITE DP114 B803 RECEIVER SITE 6" CL 300 LH LIQUID LATERAL LAUNCHER 6" CL 300 LH LIQUID LATERAL RECEIVER 8" CL 300 IL LH GAS LAUNCHER & RECEIVER DESCRIPTION	△ △ △ △ △ △ △ REV									SIGNATURE	DATE			
CLIENT APPROVAL													SCALE: NTS	DRAWING: WR-DP114-OS-001	SHEET No. 1 of 1
OPERATIONS ENGINEERING PROJ. MGR.															