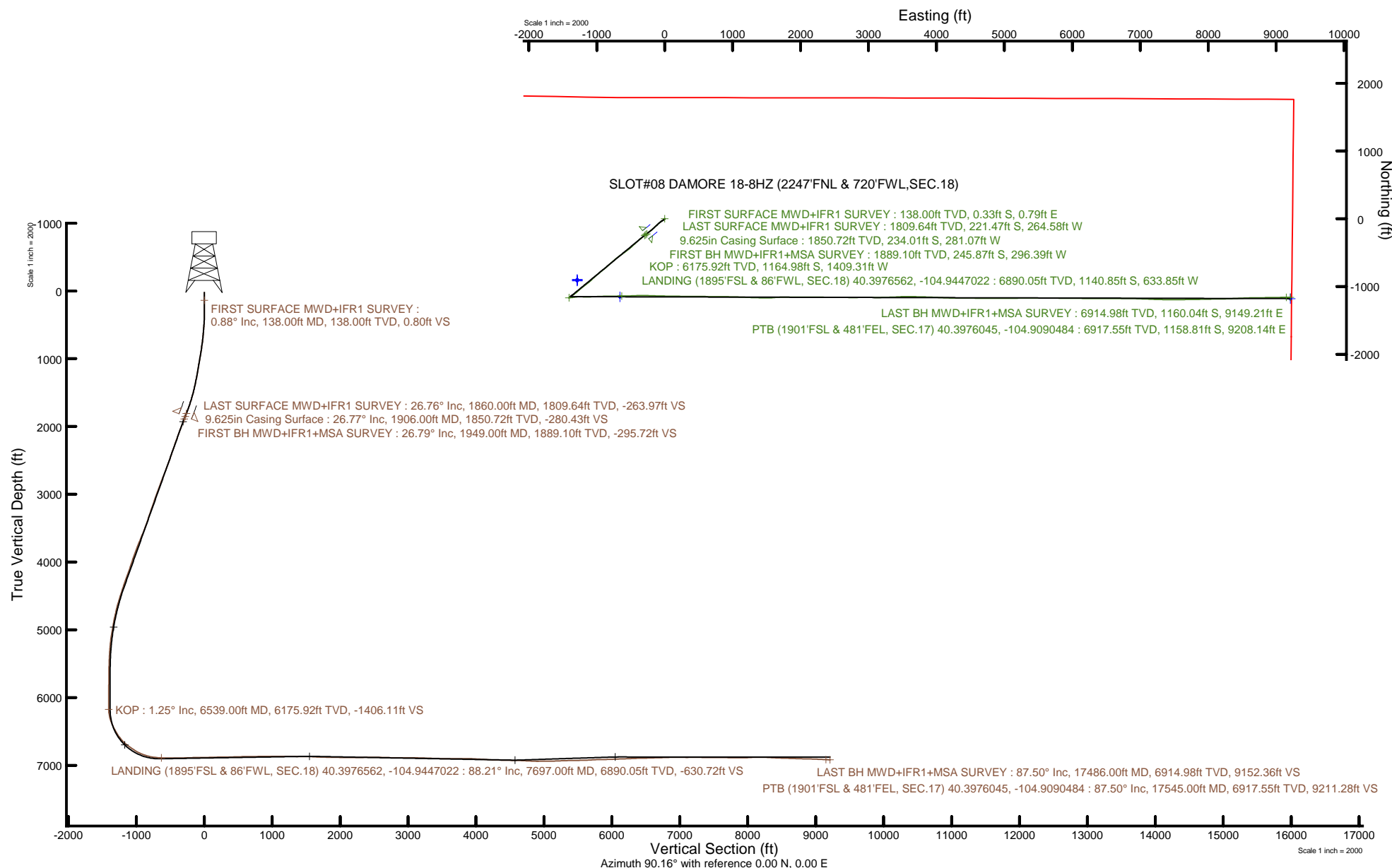


KERR-MCGEE OIL & GAS ONSHORE LP (WA)

Location: COLORADO Slot: SLOT#08 DAMORE 18-8HZ (2247'FNL & 720'FWL, SEC.18)
Field: WELD COUNTY (UTM/TRUE NORTH) Well: DAMORE 18-8HZ
Facility: SEC.18-T5N-R67W Wellbore: DAMORE 18-8HZ PWB



Plot reference wellpath is DAMORE 18-8HZ PWP Rev-B.1	Grid System: NAD83 / UTM Zone 13 North, US feet
True vertical depths are referenced to PD564 (26) (RT)	North Reference: True north
Reference wellpath measured depths are referenced to PD564 (26) (RT)	Scale: True distance
PD564 (26) (RT) to Mean Sea Level: 4948 feet	Coordinates are in feet referenced to Slot
Mean Sea Level to Mud line (At Slot: SLOT#08 DAMORE 18-8HZ (2247'FNL & 720'FWL, SEC.18)): 0 feet	Depths are in feet
Offset wellpath MDs are referenced to each path's default MD datum	Created by: raggyos on 2020-04-20; Database: WellArchitectDB



REFERENCE WELLPATH IDENTIFICATION			
Operator	KERR-MCGEE OIL & GAS ONSHORE LP (WA)	Well	DAMORE 18-8HZ
Field	WELD COUNTY (UTM/TRUE NORTH)	API/Legal	
Facility	SEC.18-T5N-R67W	Wellbore	DAMORE 18-8HZ AWB
Slot	SLOT#08 DAMORE 18-8HZ (2247'FNL & 720'FWL,SEC.18)		

REPORT SETUP INFORMATION			
Projection System	NAD83 / UTM Zone 13 North, US feet	Software System	WellArchitect® 6.0
North Reference	True	User	Ragbyos
Scale	0.999600	Report Generated	4/20/2020 at 12:54:40 PM
Convergence at slot	0.04° East	Database	WellArchitectDB

WELLPATH LOCATION						
	Local coordinates		Grid coordinates		Geographic coordinates	
	North[ft]	East[ft]	Easting[US ft]	Northing[US ft]	Latitude	Longitude
Slot Location	-81.06	67.09	1656534.19	14672687.65	40.4007900°	-104.9421080°
Facility Reference Pt			1656467.07	14672768.64	40.4010125°	-104.9423489°
Field Reference Pt			1698235.31	14552047.82	40.0693333°	-104.7933333°

WELLPATH DATUM			
Calculation method	Minimum curvature	PD564 (26') (RT) to Facility Vertical Datum	4948.00ft
Horizontal Reference Pt	Slot	PD564 (26') (RT) to Mean Sea Level	4948.00ft
Vertical Reference Pt	PD564 (26') (RT)	PD564 (26') (RT) to Mud Line at Slot (SLOT#08 DAMORE 18-8HZ (2247'FNL & 720'FWL,SEC.18))	4948.00ft
MD Reference Pt	PD564 (26') (RT)	Section Origin	N 0.00, E 0.00 ft
Field Vertical Reference	Mean Sea Level	Section Azimuth	90.16°

REFERENCE WELLPATH IDENTIFICATION			
Operator	KERR-MCGEE OIL & GAS ONSHORE LP (WA)	Well	DAMORE 18-8HZ
Field	WELD COUNTY (UTM/TRUE NORTH)	API/Legal	
Facility	SEC.18-T5N-R67W	Wellbore	DAMORE 18-8HZ AWB
Slot	SLOT#08 DAMORE 18-8HZ (2247'FNL & 720'FWL,SEC.18)		

WELLPATH DATA (198 stations) † = interpolated, ‡ = extrapolated station							
MD [ft]	Inclination [°]	Azimuth [°]	TVD [ft]	Vert Sect [ft]	North [ft]	East [ft]	DLS [°/100ft]
0.00†	0.000	112.500	0.00	0.00	0.00	0.00	0.00
26.00	0.000	112.500	26.00	0.00	0.00	0.00	0.00
138.00	0.880	112.500	138.00	0.80	-0.33	0.79	0.79
233.00	0.890	139.330	232.98	1.95	-1.17	1.95	0.43
328.00	1.100	202.540	327.97	2.09	-2.57	2.08	1.11
423.00	3.160	230.440	422.90	-0.27	-5.08	-0.29	2.37
518.00	4.920	237.790	517.66	-5.73	-8.92	-5.75	1.93
613.00	6.050	236.830	612.23	-13.35	-13.83	-13.39	1.19
708.00	7.260	235.330	706.59	-22.46	-19.98	-22.52	1.29
803.00	9.740	237.070	800.54	-34.13	-27.77	-34.20	2.62
899.00	11.150	234.990	894.94	-48.52	-37.51	-48.62	1.52
993.00	12.430	235.230	986.96	-64.24	-48.49	-64.38	1.36
1089.00	12.620	228.410	1080.68	-80.54	-61.35	-80.71	1.55
1184.00	13.130	225.810	1173.29	-96.00	-75.76	-96.21	0.81
1279.00	13.520	228.330	1265.73	-111.99	-90.66	-112.24	0.74
1373.00	16.080	227.790	1356.61	-129.80	-106.72	-130.09	2.73
1468.00	18.050	224.950	1447.42	-149.89	-125.97	-150.24	2.25
1562.00	21.220	227.690	1535.95	-172.71	-147.74	-173.11	3.51
1658.00	21.620	230.730	1625.32	-199.19	-170.63	-199.65	1.23
1753.00	23.910	232.470	1712.91	-227.94	-193.44	-228.47	2.51
1848.00	26.360	231.840	1798.91	-259.73	-218.20	-260.33	2.59
1860.00	26.760	232.980	1809.64	-263.97	-221.47	-264.58	5.40
1949.00	26.790	232.040	1889.10	-295.72	-245.87	-296.39	0.48
2038.00	26.110	231.120	1968.79	-326.71	-270.50	-327.45	0.89
2128.00	25.730	230.330	2049.73	-357.10	-295.41	-357.91	0.57
2218.00	25.660	228.000	2130.84	-386.55	-320.92	-387.43	1.13
2307.00	25.300	227.780	2211.18	-414.88	-346.59	-415.83	0.42
2396.00	25.070	227.130	2291.72	-442.71	-372.20	-443.73	0.40
2486.00	25.050	227.390	2373.25	-470.64	-398.07	-471.73	0.12
2575.00	24.770	226.610	2453.97	-497.99	-423.63	-499.15	0.49
2664.00	25.340	232.810	2534.61	-526.64	-447.96	-527.87	3.02
2754.00	24.440	232.490	2616.25	-556.69	-470.94	-557.99	1.01
2843.00	26.590	234.540	2696.56	-587.46	-493.71	-588.82	2.61
2933.00	25.300	234.690	2777.49	-619.50	-516.51	-620.92	1.44
3022.00	23.760	234.370	2858.45	-649.54	-537.94	-651.01	1.74
3112.00	25.410	231.440	2940.30	-679.31	-560.55	-680.85	2.28
3201.00	24.620	230.940	3020.95	-708.58	-584.13	-710.18	0.92
3291.00	25.310	229.930	3102.54	-737.79	-608.33	-739.46	0.90
3380.00	23.830	228.680	3183.48	-765.79	-632.45	-767.52	1.76
3470.00	25.260	229.020	3265.34	-793.87	-657.05	-795.67	1.60
3559.00	23.570	227.140	3346.38	-821.19	-681.60	-823.06	2.09
3649.00	24.610	227.850	3428.54	-848.20	-706.42	-850.14	1.20
3738.00	26.600	231.530	3508.80	-877.48	-731.26	-879.48	2.86
3827.00	27.850	230.800	3587.94	-909.12	-756.79	-911.20	1.45
3917.00	28.030	230.830	3667.45	-941.73	-783.44	-943.88	0.20

REFERENCE WELLPATH IDENTIFICATION			
Operator	KERR-MCGEE OIL & GAS ONSHORE LP (WA)	Well	DAMORE 18-8HZ
Field	WELD COUNTY (UTM/TRUE NORTH)	API/Legal	
Facility	SEC.18-T5N-R67W	Wellbore	DAMORE 18-8HZ AWB
Slot	SLOT#08 DAMORE 18-8HZ (2247'FNL & 720'FWL,SEC.18)		

WELLPATH DATA (198 stations)							
MD [ft]	Inclination [°]	Azimuth [°]	TVD [ft]	Vert Sect [ft]	North [ft]	East [ft]	DLS ["/100ft]
4006.00	28.160	229.710	3745.97	-973.89	-810.22	-976.11	0.61
4096.00	26.750	228.560	3825.83	-1005.20	-837.36	-1007.50	1.67
4186.00	24.280	227.550	3907.04	-1033.97	-863.26	-1036.34	2.79
4275.00	25.350	227.120	3987.83	-1061.37	-888.58	-1063.80	1.22
4365.00	24.090	226.390	4069.58	-1088.71	-914.36	-1091.22	1.44
4454.00	23.630	232.540	4150.98	-1115.96	-937.74	-1118.54	2.84
4544.00	25.680	232.630	4232.77	-1145.72	-960.55	-1148.36	2.28
4633.00	24.260	231.120	4313.45	-1175.22	-983.73	-1177.92	1.75
4723.00	21.760	230.970	4396.29	-1202.51	-1005.85	-1205.27	2.78
4812.00	23.080	230.290	4478.56	-1228.69	-1027.38	-1231.51	1.51
4902.00	21.570	230.010	4561.81	-1254.88	-1049.28	-1257.76	1.68
4991.00	20.330	228.240	4644.93	-1278.89	-1070.10	-1281.83	1.56
5080.00	16.510	227.860	4729.35	-1299.75	-1088.88	-1302.74	4.29
5170.00	15.400	232.890	4815.89	-1318.72	-1104.68	-1321.76	1.97
5259.00	12.530	231.670	4902.25	-1335.69	-1117.80	-1338.76	3.24
5349.00	11.910	239.490	4990.21	-1351.32	-1128.57	-1354.42	1.96
5463.00	9.680	237.260	5102.19	-1369.49	-1139.72	-1372.62	1.99
5552.00	7.580	235.900	5190.18	-1380.62	-1147.06	-1383.77	2.37
5641.00	5.700	232.130	5278.58	-1388.96	-1153.07	-1392.12	2.17
5730.00	4.300	226.410	5367.24	-1394.85	-1158.08	-1398.03	1.67
5820.00	3.230	231.910	5457.04	-1399.28	-1161.97	-1402.47	1.25
5909.00	1.200	244.400	5545.97	-1402.09	-1163.92	-1405.28	2.33
5999.00	1.460	232.910	5635.95	-1403.85	-1165.02	-1407.05	0.41
6088.00	0.260	239.770	5724.93	-1404.93	-1165.81	-1408.13	1.35
6178.00	0.100	216.140	5814.93	-1405.15	-1165.97	-1408.35	0.19
6267.00	0.380	281.570	5903.93	-1405.48	-1165.98	-1408.68	0.39
6356.00	0.400	308.230	5992.93	-1406.02	-1165.72	-1409.22	0.20
6446.00	0.330	290.360	6082.93	-1406.51	-1165.44	-1409.71	0.15
6535.00	0.860	59.570	6171.93	-1406.17	-1165.01	-1409.37	1.23
6624.00	10.000	82.230	6260.44	-1397.93	-1163.63	-1401.12	10.35
6714.00	19.520	83.770	6347.37	-1375.19	-1160.93	-1378.38	10.59
6803.00	26.110	84.800	6429.36	-1340.88	-1157.54	-1344.06	7.42
6893.00	30.400	82.280	6508.62	-1298.58	-1152.68	-1301.75	4.95
6982.00	36.140	90.720	6583.04	-1249.97	-1149.98	-1253.12	8.27
7071.00	45.400	92.420	6650.37	-1191.94	-1151.66	-1195.10	10.48
7161.00	52.430	88.950	6709.49	-1124.16	-1152.36	-1127.33	8.33
7250.00	56.910	87.570	6760.95	-1051.62	-1150.13	-1054.77	5.19
7340.00	61.270	87.730	6807.17	-974.49	-1146.96	-977.64	4.85
7429.00	69.780	88.850	6844.01	-893.61	-1144.58	-896.75	9.63
7519.00	78.180	88.920	6868.82	-807.20	-1142.90	-810.34	9.33
7608.00	83.090	89.480	6883.30	-719.43	-1141.67	-722.56	5.55
7697.00	88.210	89.460	6890.05	-630.72	-1140.85	-633.85	5.75
7787.00	89.390	88.600	6891.93	-540.76	-1139.33	-543.88	1.62
7876.00	90.280	87.410	6892.19	-451.82	-1136.23	-454.94	1.67
7965.00	91.070	89.010	6891.14	-362.88	-1133.45	-365.99	2.00

REFERENCE WELLPATH IDENTIFICATION			
Operator	KERR-MCGEE OIL & GAS ONSHORE LP (WA)	Well	DAMORE 18-8HZ
Field	WELD COUNTY (UTM/TRUE NORTH)	API/Legal	
Facility	SEC.18-T5N-R67W	Wellbore	DAMORE 18-8HZ AWB
Slot	SLOT#08 DAMORE 18-8HZ (2247'FNL & 720'FWL,SEC.18)		

WELLPATH DATA (198 stations)							
MD [ft]	Inclination [°]	Azimuth [°]	TVD [ft]	Vert Sect [ft]	North [ft]	East [ft]	DLS [°/100ft]
8055.00	91.210	91.520	6889.35	-272.91	-1133.87	-276.02	2.79
8145.00	92.180	91.740	6886.69	-182.98	-1136.43	-186.09	1.11
8234.00	90.410	91.540	6884.68	-94.04	-1138.97	-97.16	2.00
8323.00	90.480	91.310	6883.99	-5.06	-1141.19	-8.19	0.27
8412.00	90.980	90.920	6882.85	83.92	-1142.92	80.79	0.71
8502.00	92.130	90.620	6880.41	173.88	-1144.13	170.74	1.32
8592.00	90.160	91.090	6878.61	263.85	-1145.47	260.71	2.25
8681.00	90.670	90.730	6877.97	352.84	-1146.88	349.70	0.70
8770.00	91.290	90.430	6876.44	441.82	-1147.78	438.68	0.77
8860.00	92.220	89.580	6873.69	531.78	-1147.79	528.64	1.40
8949.00	91.350	91.160	6870.92	620.73	-1148.37	617.59	2.03
9039.00	89.610	90.040	6870.16	710.72	-1149.31	707.57	2.30
9128.00	90.900	89.910	6869.77	799.72	-1149.27	796.57	1.46
9217.00	89.810	91.100	6869.21	888.71	-1150.05	885.56	1.81
9307.00	91.360	91.270	6868.30	978.69	-1151.91	975.54	1.73
9396.00	89.870	91.880	6867.34	1067.65	-1154.36	1064.50	1.81
9486.00	88.760	91.860	6868.42	1157.61	-1157.30	1154.44	1.23
9575.00	90.070	92.270	6869.32	1246.55	-1160.50	1243.37	1.54
9665.00	89.390	91.460	6869.75	1336.51	-1163.43	1333.32	1.18
9754.00	88.780	91.010	6871.17	1425.48	-1165.35	1422.29	0.85
9844.00	90.050	90.520	6872.09	1515.47	-1166.55	1512.28	1.51
9933.00	87.100	85.530	6874.30	1604.34	-1163.49	1601.16	6.51
10022.00	88.510	87.550	6877.71	1693.09	-1158.12	1689.92	2.77
10112.00	88.730	90.250	6879.88	1783.04	-1156.40	1779.87	3.01
10201.00	89.880	90.380	6880.96	1872.03	-1156.89	1868.86	1.30
10290.00	88.440	89.630	6882.26	1961.01	-1156.89	1957.85	1.82
10380.00	88.130	89.420	6884.96	2050.97	-1156.15	2047.81	0.42
10469.00	90.980	89.840	6885.65	2139.95	-1155.57	2136.79	3.24
10559.00	90.020	90.560	6884.86	2229.95	-1155.89	2226.79	1.33
10648.00	91.300	91.420	6883.84	2318.93	-1157.43	2315.77	1.73
10737.00	90.780	90.090	6882.22	2407.91	-1158.60	2404.74	1.60
10827.00	90.280	90.470	6881.39	2497.90	-1159.04	2494.74	0.70
10916.00	88.110	90.880	6882.64	2586.89	-1160.09	2583.72	2.48
11005.00	88.340	90.560	6885.40	2675.84	-1161.20	2672.67	0.44
11095.00	88.980	90.050	6887.50	2765.81	-1161.68	2762.64	0.91
11184.00	89.620	89.500	6888.59	2854.80	-1161.33	2851.63	0.95
11274.00	90.840	89.270	6888.23	2944.79	-1160.37	2941.62	1.38
11364.00	89.320	91.090	6888.10	3034.79	-1160.65	3031.62	2.63
11453.00	89.190	90.310	6889.26	3123.77	-1161.74	3120.60	0.89
11543.00	87.540	88.600	6891.83	3213.72	-1160.88	3210.55	2.64
11632.00	87.910	88.120	6895.36	3302.61	-1158.34	3299.45	0.68
11721.00	88.390	87.770	6898.23	3391.50	-1155.15	3388.34	0.67
11811.00	89.420	87.320	6899.95	3481.39	-1151.29	3478.24	1.25
11900.00	90.320	90.170	6900.16	3570.35	-1149.34	3567.21	3.36
11990.00	89.360	91.360	6900.41	3660.34	-1150.55	3657.20	1.70

REFERENCE WELLPATH IDENTIFICATION

Operator	KERR-MCGEE OIL & GAS ONSHORE LP (WA)	Well	DAMORE 18-8HZ
Field	WELD COUNTY (UTM/TRUE NORTH)	API/Legal	
Facility	SEC.18-T5N-R67W	Wellbore	DAMORE 18-8HZ AWB
Slot	SLOT#08 DAMORE 18-8HZ (2247'FNL & 720'FWL,SEC.18)		

WELLPATH DATA (198 stations)

MD [ft]	Inclination [°]	Azimuth [°]	TVD [ft]	Vert Sect [ft]	North [ft]	East [ft]	DLS [°/100ft]
12079.00	90.530	91.170	6900.49	3749.32	-1152.51	3746.18	1.33
12169.00	89.590	91.200	6900.40	3839.31	-1154.37	3836.16	1.04
12258.00	87.880	92.380	6902.36	3928.24	-1157.15	3925.09	2.33
12348.00	86.430	92.320	6906.83	4018.06	-1160.84	4014.90	1.61
12438.00	86.510	92.750	6912.37	4107.82	-1164.81	4104.64	0.49
12527.00	86.390	92.120	6917.88	4196.57	-1168.58	4193.39	0.72
12616.00	88.530	90.020	6921.83	4285.47	-1170.24	4282.27	3.37
12706.00	89.620	89.490	6923.28	4375.45	-1169.86	4372.26	1.35
12795.00	87.740	90.490	6925.33	4464.42	-1169.84	4461.23	2.39
12885.00	89.980	91.260	6927.12	4554.39	-1171.22	4551.20	2.63
12974.00	87.590	90.740	6929.01	4643.35	-1172.77	4640.16	2.75
13064.00	87.020	90.430	6933.24	4733.25	-1173.69	4730.05	0.72
13153.00	87.110	90.160	6937.80	4822.13	-1174.14	4818.93	0.32
13243.00	90.130	90.380	6939.96	4912.10	-1174.57	4908.90	3.36
13332.00	90.590	89.540	6939.40	5001.09	-1174.51	4997.89	1.08
13422.00	91.120	88.970	6938.06	5091.07	-1173.34	5087.88	0.86
13511.00	91.700	89.030	6935.87	5180.03	-1171.78	5176.83	0.66
13601.00	92.870	88.670	6932.28	5269.93	-1169.98	5266.74	1.36
13690.00	90.610	90.060	6929.58	5358.87	-1168.99	5355.69	2.98
13780.00	91.060	90.160	6928.27	5448.86	-1169.17	5445.68	0.51
13869.00	91.410	90.540	6926.35	5537.84	-1169.71	5534.66	0.58
13959.00	92.200	90.430	6923.52	5627.79	-1170.47	5624.61	0.89
14048.00	93.560	90.190	6919.04	5716.68	-1170.95	5713.49	1.55
14138.00	90.920	90.530	6915.53	5806.60	-1171.52	5803.41	2.96
14228.00	91.150	91.030	6913.90	5896.58	-1172.74	5893.39	0.61
14317.00	91.930	90.650	6911.51	5985.54	-1174.05	5982.35	0.97
14406.00	93.030	90.040	6907.66	6074.46	-1174.58	6071.26	1.41
14496.00	91.350	90.340	6904.22	6164.39	-1174.88	6161.19	1.90
14585.00	92.120	90.940	6901.52	6253.34	-1175.87	6250.14	1.10
14675.00	92.920	90.540	6897.57	6343.25	-1177.04	6340.05	0.99
14764.00	90.780	90.180	6894.69	6432.20	-1177.59	6428.99	2.44
14854.00	91.130	89.400	6893.19	6522.18	-1177.26	6518.98	0.95
14943.00	92.720	89.490	6890.21	6611.12	-1176.40	6607.92	1.79
15032.00	91.050	89.810	6887.28	6700.07	-1175.86	6696.87	1.91
15122.00	91.960	89.790	6884.91	6790.03	-1175.55	6786.84	1.01
15212.00	91.610	91.370	6882.11	6879.98	-1176.46	6876.79	1.80
15301.00	89.070	92.040	6881.58	6968.94	-1179.10	6965.74	2.95
15390.00	89.150	92.190	6882.96	7057.88	-1182.39	7054.67	0.19
15480.00	90.900	92.160	6882.93	7147.82	-1185.80	7144.60	1.94
15569.00	89.760	91.890	6882.41	7236.77	-1188.95	7233.54	1.32
15659.00	88.990	91.200	6883.39	7326.74	-1191.37	7323.50	1.15
15748.00	89.480	90.640	6884.58	7415.72	-1192.80	7412.48	0.84
15837.00	91.290	89.790	6883.98	7504.71	-1193.14	7501.47	2.25
15927.00	88.790	89.210	6883.92	7594.70	-1192.35	7591.46	2.85
16016.00	88.510	89.380	6886.02	7683.67	-1191.26	7680.43	0.37

REFERENCE WELLPATH IDENTIFICATION			
Operator	KERR-MCGEE OIL & GAS ONSHORE LP (WA)	Well	DAMORE 18-8HZ
Field	WELD COUNTY (UTM/TRUE NORTH)	API/Legal	
Facility	SEC.18-T5N-R67W	Wellbore	DAMORE 18-8HZ AWB
Slot	SLOT#08 DAMORE 18-8HZ (2247'FNL & 720'FWL,SEC.18)		

WELLPATH DATA (198 stations) † = interpolated, ‡ = extrapolated station							
MD [ft]	Inclination [°]	Azimuth [°]	TVD [ft]	Vert Sect [ft]	North [ft]	East [ft]	DLS [°/100ft]
16106.00	89.050	89.260	6887.94	7773.64	-1190.19	7770.40	0.61
16195.00	90.080	88.600	6888.61	7862.61	-1188.53	7859.38	1.37
16284.00	90.950	88.810	6887.81	7951.58	-1186.52	7948.36	1.01
16373.00	93.230	88.950	6884.57	8040.49	-1184.78	8037.27	2.57
16463.00	90.650	89.650	6881.52	8130.42	-1183.68	8127.21	2.97
16552.00	89.390	89.120	6881.49	8219.41	-1182.72	8216.20	1.54
16642.00	86.920	87.470	6884.39	8309.31	-1180.05	8306.10	3.30
16731.00	86.970	87.860	6889.13	8398.10	-1176.43	8394.90	0.44
16821.00	87.940	87.830	6893.12	8487.93	-1173.05	8484.75	1.08
16910.00	88.590	87.410	6895.82	8576.80	-1169.35	8573.63	0.87
17000.00	87.880	89.660	6898.59	8666.72	-1167.05	8663.55	2.62
17090.00	88.140	89.090	6901.72	8756.66	-1166.07	8753.49	0.70
17179.00	88.990	89.140	6903.95	8845.61	-1164.70	8842.45	0.96
17268.00	87.980	89.330	6906.30	8934.57	-1163.51	8931.41	1.15
17358.00	87.780	88.970	6909.63	9024.49	-1162.18	9021.34	0.46
17448.00	87.510	89.160	6913.33	9114.40	-1160.71	9111.25	0.37
17486.00	87.500	88.810	6914.98	9152.36	-1160.04	9149.21	0.92
17545.00†	87.500	88.810	6917.55	9211.28	-1158.81	9208.14	0.00

HOLE & CASING SECTIONS - Ref Wellbore: DAMORE 18-8HZ AWB Ref Wellpath: DAMORE 18-8HZ AWP									
String/Diameter	Start MD [ft]	End MD [ft]	Interval [ft]	Start TVD [ft]	End TVD [ft]	Start N/S [ft]	Start E/W [ft]	End N/S [ft]	End E/W [ft]
9.625in Casing Surface	26.00	1906.00	1880.00	26.00	1850.72	0.00	0.00	-234.01	-281.07

REFERENCE WELLPATH IDENTIFICATION			
Operator	KERR-MCGEE OIL & GAS ONSHORE LP (WA)	Well	DAMORE 18-8HZ
Field	WELD COUNTY (UTM/TRUE NORTH)	API/Legal	
Facility	SEC.18-T5N-R67W	Wellbore	DAMORE 18-8HZ AWB
Slot	SLOT#08 DAMORE 18-8HZ (2247'FNL & 720'FWL,SEC.18)		

TARGETS								
Name	TVD [ft]	North [ft]	East [ft]	Grid East [US ft]	Grid North [US ft]	Latitude	Longitude	Shape
DAMORE DSU	16.00	80.88	-67.12	1656467.04	14672768.45	40.4010120	-104.9423490	polygon
	2D Polygon: dimensions not calculated							
SEC.13-T5N-R67W	16.00	-911.05	-1287.44	1655247.87	14671776.13	40.3982892	-104.9467303	polygon
	2D Polygon: dimensions not calculated							
SEC.14-T5N-R67W	16.00	-911.05	-1287.44	1655247.87	14671776.13	40.3982892	-104.9467303	polygon
	2D Polygon: dimensions not calculated							
SEC.15-T5N-R67W	16.00	-917.05	-1287.44	1655247.87	14671770.13	40.3982727	-104.9467303	polygon
	2D Polygon: dimensions not calculated							
SEC.17-T5N-R67W	16.00	-897.05	-1287.44	1655247.86	14671790.12	40.3983276	-104.9467303	polygon
	2D Polygon: dimensions not calculated							
SEC.18-T5N-R67W	16.00	-897.05	-1287.44	1655247.86	14671790.12	40.3983276	-104.9467303	polygon
	2D Polygon: dimensions not calculated							
DAMORE 18-8HZ BHL REV-2 (1882'FSL & 480'FEL,SEC.17)	6878.00	-1178.25	9208.86	1665740.12	14671515.90	40.3975511	-104.9090459	point
DAMORE 18-8HZ HEEL REV-1 (1885'FSL & 75'FWL,SEC.18)	6903.00	-1151.22	-660.68	1655874.53	14671536.47	40.3976300	-104.9444800	point

WELLPATH COMPOSITION - Ref Wellbore: DAMORE 18-8HZ AWB Ref Wellpath: DAMORE 18-8HZ AWP					
Start MD [ft]	End MD [ft]	Positional Uncertainty Model	Log Name/Comment	Wellbore	Survey Date
26.00	1860.00	Custom APC ISCWSA REV 2 MWD+IFR1 (approximation)	Custom APC ISCWSA Rev-2 MWD+IFR1 <120 - 1842 >	DAMORE 18-8HZ AWB	2/27/2020
1860.00	17545.00	Custom APC ISCWSA REV 2 MWD+IFR1+MSA (approximation)	BH Custom APC ISCWSA Rev-2 MWD+IFR1 +MSA <1949 - 17486 >	DAMORE 18-8HZ AWB	4/16/2020