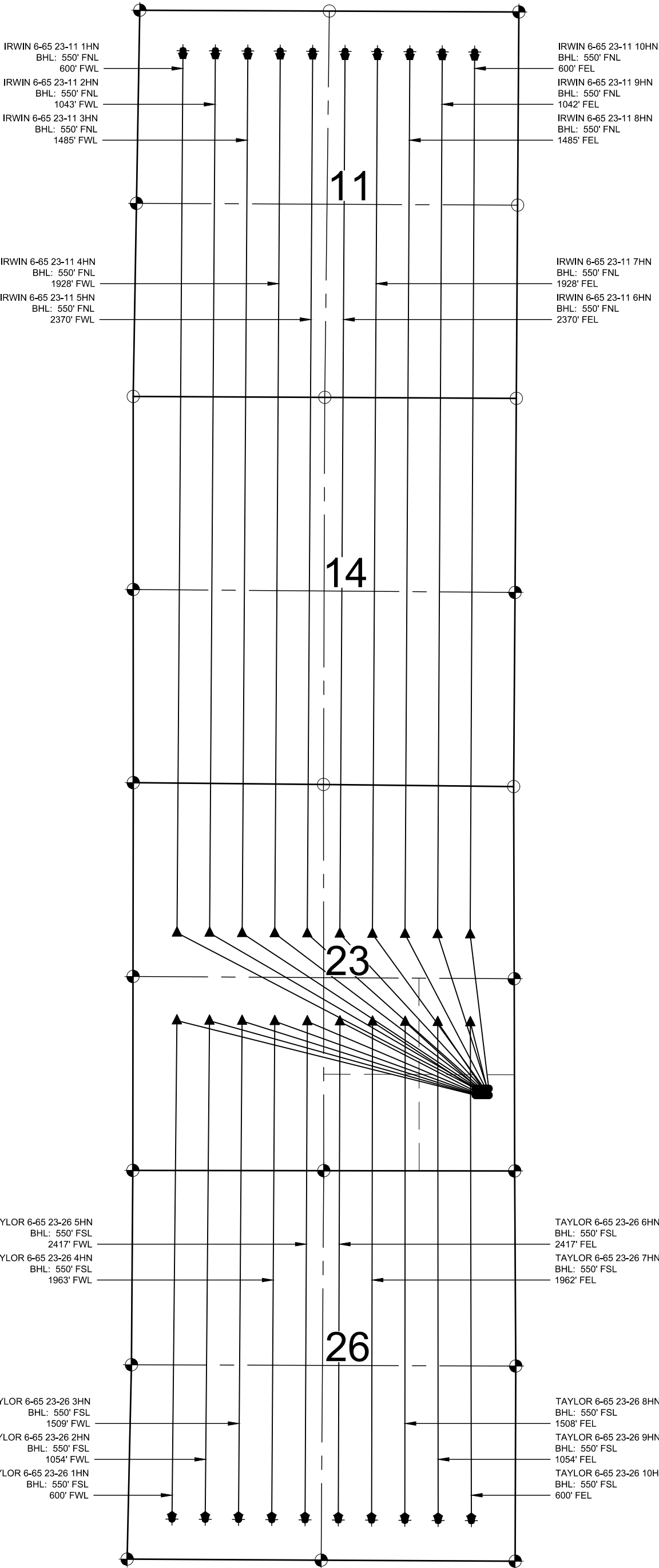


IRWIN-TAYLOR PAD
MULTI-WELL PLAN



- NOTES:
- THIS FIELD SURVEY CONFORMS TO THE MINIMUM STANDARDS SET BY THE COGCC, RULE NO. 215
 - ALL BEARINGS ARE GRID BEARINGS OF THE COLORADO STATE PLANE COORDINATE SYSTEM, CENTRAL ZONE, NORTH AMERICAN DATUM 1983/2011. THE LINEAL DIMENSIONS AS SHOWN HEREIN ARE GRID DISTANCES BASED UPON THE "U.S. SURVEY FOOT." TO GET GROUND DISTANCES MULTIPLY SHOWN DISTANCE BY 1.0003323.
 - FIELD VERIFICATION OF MONUMENTS COMPLETED WITHIN 1 YEAR OF SIGNATURE DATE, UNLESS OTHERWISE NOTED.

- NOTES:
- IRWIN 6-65 23-11 1HN TO BE AT 1124' FSL & 531' FEL.
BOTTOM HOLE AT 550' FNL & 600' FWL, SEC. 11.
- IRWIN 6-65 23-11 2HN TO BE AT 1124' FSL & 511' FEL.
BOTTOM HOLE AT 550' FNL & 1043' FWL, SEC. 11.
- IRWIN 6-65 23-11 3HN TO BE AT 1124' FSL & 491' FEL.
BOTTOM HOLE AT 550' FNL & 1485' FWL, SEC. 11.
- IRWIN 6-65 23-11 4HN TO BE AT 1124' FSL & 471' FEL.
BOTTOM HOLE AT 550' FNL & 1928' FWL, SEC. 11.
- IRWIN 6-65 23-11 5HN TO BE AT 1124' FSL & 451' FEL.
BOTTOM HOLE AT 550' FNL & 2370' FWL, SEC. 11.
- IRWIN 6-65 23-11 6HN TO BE AT 1124' FSL & 431' FEL.
BOTTOM HOLE AT 550' FNL & 2370' FEL, SEC. 11.
- IRWIN 6-65 23-11 7HN TO BE AT 1124' FSL & 411' FEL.
BOTTOM HOLE AT 550' FNL & 1928' FEL, SEC. 11.
- IRWIN 6-65 23-11 8HN TO BE AT 1124' FSL & 391' FEL.
BOTTOM HOLE AT 550' FNL & 1485' FEL, SEC. 11.
- IRWIN 6-65 23-11 9HN TO BE AT 1124' FSL & 371' FEL.
BOTTOM HOLE AT 550' FNL & 1042' FEL, SEC. 11.
- IRWIN 6-65 23-11 10HN TO BE AT 1124' FSL & 351' FEL.
BOTTOM HOLE AT 550' FNL & 600' FEL, SEC. 11.
- TAYLOR 6-65 23-26 1HN TO BE AT 1124' FSL & 531' FEL.
BOTTOM HOLE AT 550' FSL & 600' FWL, SEC. 26.
- TAYLOR 6-65 23-26 2HN TO BE AT 1034' FSL & 511' FEL.
BOTTOM HOLE AT 550' FSL & 1054' FWL, SEC. 26.
- TAYLOR 6-65 23-26 3HN TO BE AT 1034' FSL & 491' FEL.
BOTTOM HOLE AT 550' FSL & 1509' FWL, SEC. 26.
- TAYLOR 6-65 23-26 4HN TO BE AT 1034' FSL & 471' FEL.
BOTTOM HOLE AT 550' FSL & 1963' FWL, SEC. 26.
- TAYLOR 6-65 23-26 5HN TO BE AT 1034' FSL & 451' FEL.
BOTTOM HOLE AT 550' FSL & 2417' FWL, SEC. 26.
- TAYLOR 6-65 23-26 6HN TO BE AT 1034' FSL & 431' FEL.
BOTTOM HOLE AT 550' FSL & 2417' FEL, SEC. 26.
- TAYLOR 6-65 23-26 7HN TO BE AT 1034' FSL & 411' FEL.
BOTTOM HOLE AT 550' FSL & 1962' FEL, SEC. 26.
- TAYLOR 6-65 23-26 8HN TO BE AT 1034' FSL & 391' FEL.
BOTTOM HOLE AT 550' FSL & 1508' FEL, SEC. 26.
- TAYLOR 6-65 23-26 9HN TO BE AT 1034' FSL & 371' FEL.
BOTTOM HOLE AT 550' FSL & 1054' FEL, SEC. 26.
- TAYLOR 6-65 23-26 10HN TO BE AT 1034' FSL & 351' FEL.
BOTTOM HOLE AT 550' FSL & 600' FEL, SEC. 26.

LEGEND

- EXISTING MONUMENT
- CALCULATED POSITION
- PROPOSED WELL
- BOTTOM HOLE
- LAST TAKE POINT
- LANDING POINT
- EXISTING WELL
- LP = LANDING POINT
- BHL = BOTTOM HOLE

