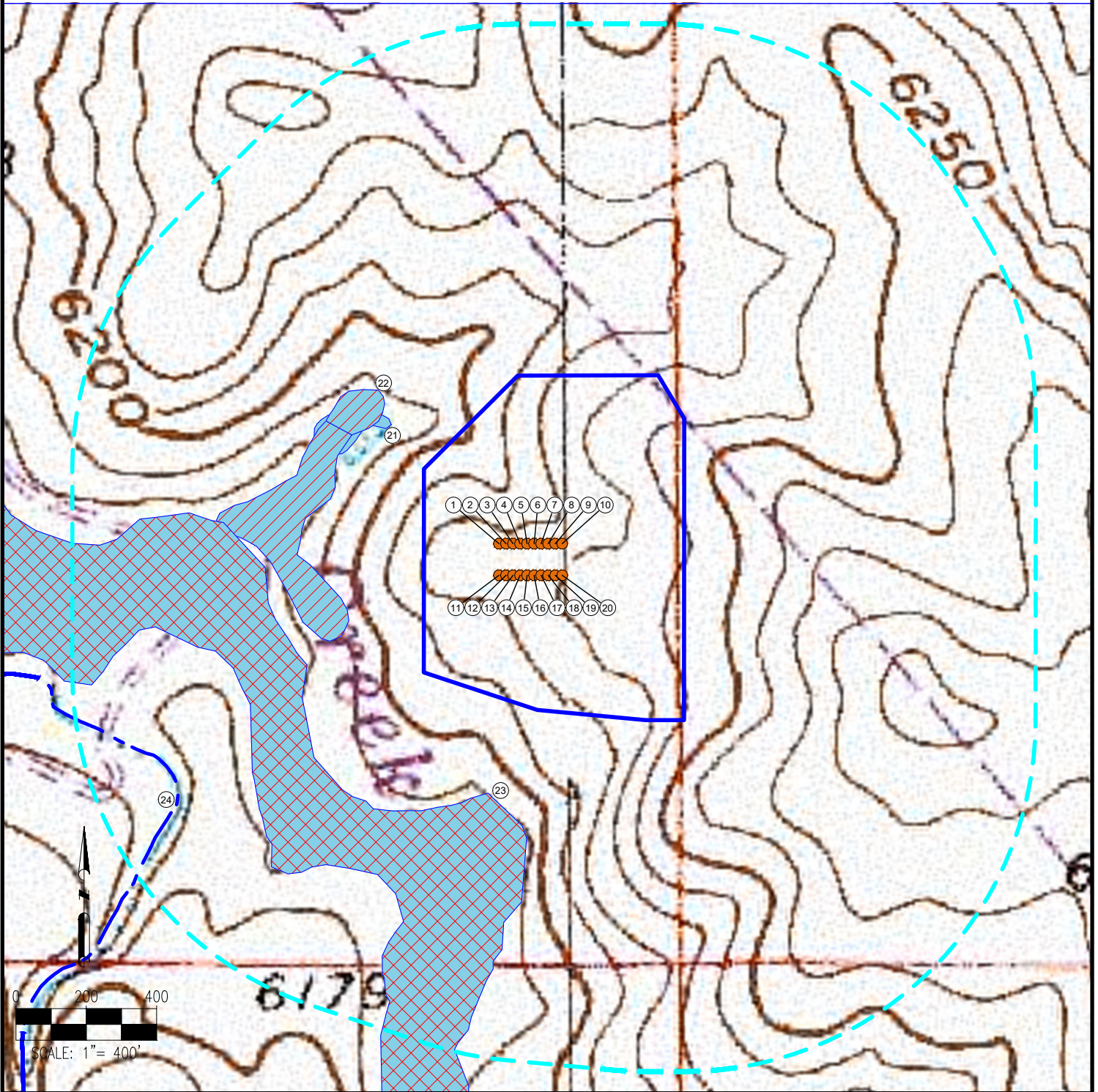


IRWIN-TAYLOR PAD HYDROLOGY MAP



MEASUREMENTS ARE MADE FROM THE NEAREST EDGE OF THE DISTURBANCE AREA.

- | | | | | |
|--------------------------|----------------------------|--------------------------|---------------------------|-------------------------------------|
| 1. TAYLOR 6-65 23-26 1HN | 6. TAYLOR 6-65 23-26 6HN | 11. IRWIN 6-65 23-11 1HN | 16. IRWIN 6-65 23-11 6HN | 21. POND IS ±155' NW |
| 2. TAYLOR 6-65 23-26 2HN | 7. TAYLOR 6-65 23-26 7HN | 12. IRWIN 6-65 23-11 2HN | 17. IRWIN 6-65 23-11 7HN | 22. WETLAND IS ±187' W |
| 3. TAYLOR 6-65 23-26 3HN | 8. TAYLOR 6-65 23-26 8HN | 13. IRWIN 6-65 23-11 3HN | 18. IRWIN 6-65 23-11 8HN | 23. FLOODPLAIN IS ±269' S |
| 4. TAYLOR 6-65 23-26 4HN | 9. TAYLOR 6-65 23-26 9HN | 14. IRWIN 6-65 23-11 4HN | 19. IRWIN 6-65 23-11 9HN | 24. INTERMITTENT STREAM IS ±770' SW |
| 5. TAYLOR 6-65 23-26 5HN | 10. TAYLOR 6-65 23-26 10HN | 15. IRWIN 6-65 23-11 5HN | 20. IRWIN 6-65 23-11 10HN | |

LEGEND:

- | | | | |
|--|-----------------|--|-----------------------------|
| | = PROPOSED WELL | | = 1000' RADIUS |
| | = STREAM | | = PROPOSED DISTURBANCE AREA |
| | = POND | | = WETLAND |
| | | | = FLOODPLAIN |

DISCLAIMER:
THIS PLOT DOES NOT REPRESENT A MONUMENTED LAND SURVEY AND SHOULD NOT BE RELIED UPON TO DETERMINE BOUNDARY LINES, PROPERTY OWNERSHIP OR OTHER PROPERTY INTERESTS. PARCEL LINES, IF DEPICTED HAVE NOT BEEN FIELD VERIFIED AND MAY BE BASED UPON PUBLICLY AVAILABLE DATA THAT ALSO HAS NOT BEEN INDEPENDENTLY VERIFIED.

DATA SOURCE:
TOPO MAP: USGS
NHD: USGS

PUBLICLY AVAILABLE DATA SOURCES HAVE NOT BEEN INDEPENDENTLY VERIFIED BY ASCENT.



8620 Wolff Court
Westminster, CO 80031
(303) 928-7128
www.ascentgeomatics.com

FIELD DATE:

04-26-19

DRAWING DATE:

07-16-19

BY:

JAG

CHECKED:

DNS

SITE NAME:

IRWIN-TAYLOR PAD

SURFACE LOCATION:

SE 1/4 SE 1/4 SEC. 23, T6S, R65W, 6TH P.M.
ELBERT COUNTY, COLORADO

PREPARED FOR:

