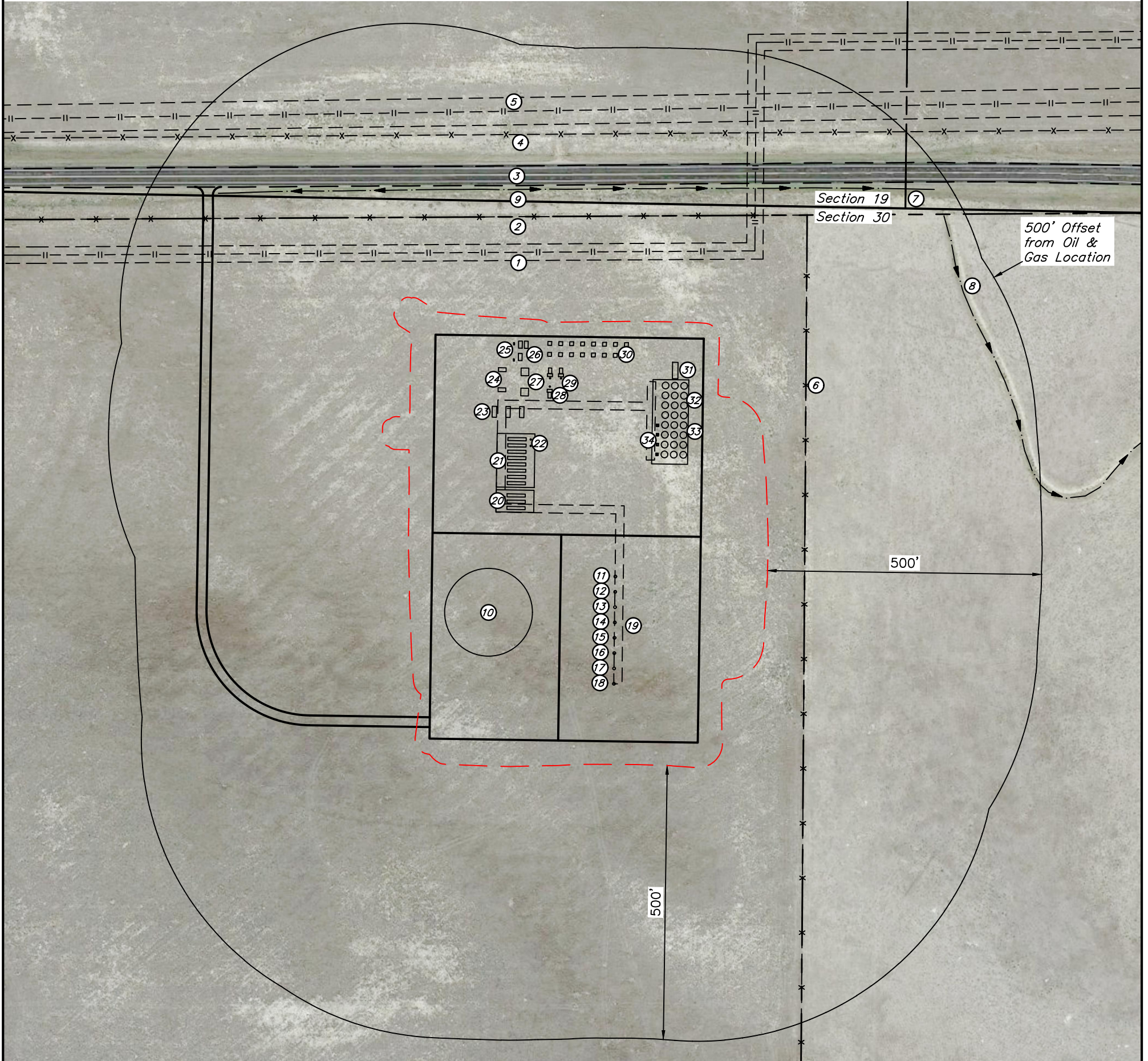


CULTURAL DISTANCES	FROM NEAREST WELL	FROM NEAREST PRODUCTION FACILITY
BUILDING	5280'+	5280'+
BUILDING UNIT	5280'+	5280'+
HIGH OCCU. BUILDING	5280'+	5280'+
D.O.A.A.	5280'+	5280'+
PUBLIC ROAD	NORTH 716'	NORTH 284'
ABOVE GROUND UTILITY	SW 2548'	SW 2494'
RAILROAD	5280'+	5280'+
PROPERTY LINE	EAST 346'	EAST 216'
CHILD CARE FACILITY	5280'+	5280'+
SCHOOL FACILITY	5280'+	5280'+
SCHOOL PROPERTY LINE	5280'+	5280'+



LEGEND

- - - - - = OIL & GAS LOCATION
- - - - - = PROPERTY LINE
- - - - - || - - - - - = PIPELINE
- x - - - x - - - - - = FENCE
- - - - - > - - - - - = DITCH

REV: 5 06-01-20 C.IVIE (ADD EQUIPMENT TO TABLE)

#	FEATURE	BEARING	DISTANCE	#	FEATURE	#	FEATURE	#	FEATURE
1	PIPELINE	NORTH	162'	10	MLV TANK	20	OIL POLISHER	30	ECD
2	FENCE/PROPERTY LINE	NORTH	227'	11	PROPOSED WELL: ALLRED 8-59 30-31-1	21	3 PHASE SEPARATOR	31	LACT UNIT
3	HIGHWAY 14	NORTH	284'	12	PROPOSED WELL: ALLRED 8-59 30-31-2	22	GAS SCRUBBER	32	WATER TANK
4	FENCE	NORTH	377'	13	PROPOSED WELL: ALLRED 8-59 30-31-3	23	RECYCLE PUMP	33	OIL TANK
5	BAJA PHASE 1 PIPELINE	NORTH	420'	14	PROPOSED WELL: ALLRED 8-59 30-31-4	24	METER SKID	34	VRT
6	FENCE/PROPERTY LINE	EAST	216'	15	PROPOSED WELL: ALLRED 8-59 30-31-5	25	KNOCKOUT		
7	PROPERTY LINE	NE	510'	16	PROPOSED WELL: ALLRED 8-59 30-31-6	26	VRU		
8	DITCH	NE	531'	17	PROPOSED WELL: ALLRED 8-59 30-31-7	27	GAS LIFT METER BUILDING		
9	ROAD SIDE DITCH	NORTH	277'	18	PROPOSED WELL: ALLRED 8-59 30-31-8	28	GAS LIFT COMPRESSOR		
				19	15' WIDE FLOW LINE CORRIDOR	29	GAS LIFT SCRUBBER		

Plant Community: Native Grassland
 Current Land Use: Range Land
 Future Land Use: Range Land

- NOTES:**
- Bearings & distances shown are from the nearest oil & gas facility.
 - No building units within 2000 feet of proposed oil & gas location.

BISON OIL & GAS II

ALLRED 8-59 30 PAD
 NE 1/4 NW 1/4, SECTION 30, T8N, R59W, 6th P.M.
 WELD COUNTY, COLORADO

SURVEYED BY	ORION RICE, J.C.	01-03-20	SCALE
DRAWN BY	C.C.	09-14-17	1" = 200'
LOCATION DRAWING		FIGURE #4	



UELS, LLC
 Corporate Office * 85 South 200 East
 Vernal, UT 84078 * (435) 789-1017