



6899 Pecos Street, Unit C
Denver, Colorado 80221

CLIENT: Kerr-McGee Oil & Gas Onshore LP

LOGGED BY: Alexander Hamilton

PROJECT MANAGER: Robert Cornez

DRILLING CONTRACTOR: Tasman Geosciences, Inc.

DRILLING EQUIPMENT: AMS Powerprobe 9300-SK

DRILL BIT SIZE (INCHES): 2.375

DATE STARTED - COMPLETED: 5/1/2018

TOTAL WELL DEPTH (FT. BGS): 22.5

DEPTH TO WATER (FT. BGS): 5.32 (6/29/2018)

CPC 41-10 #1, Champlin 31-10 #3,
32-10 #2, 42-10 #4 Production Facility

BORING / WELL ID: BH01 (Destroyed)

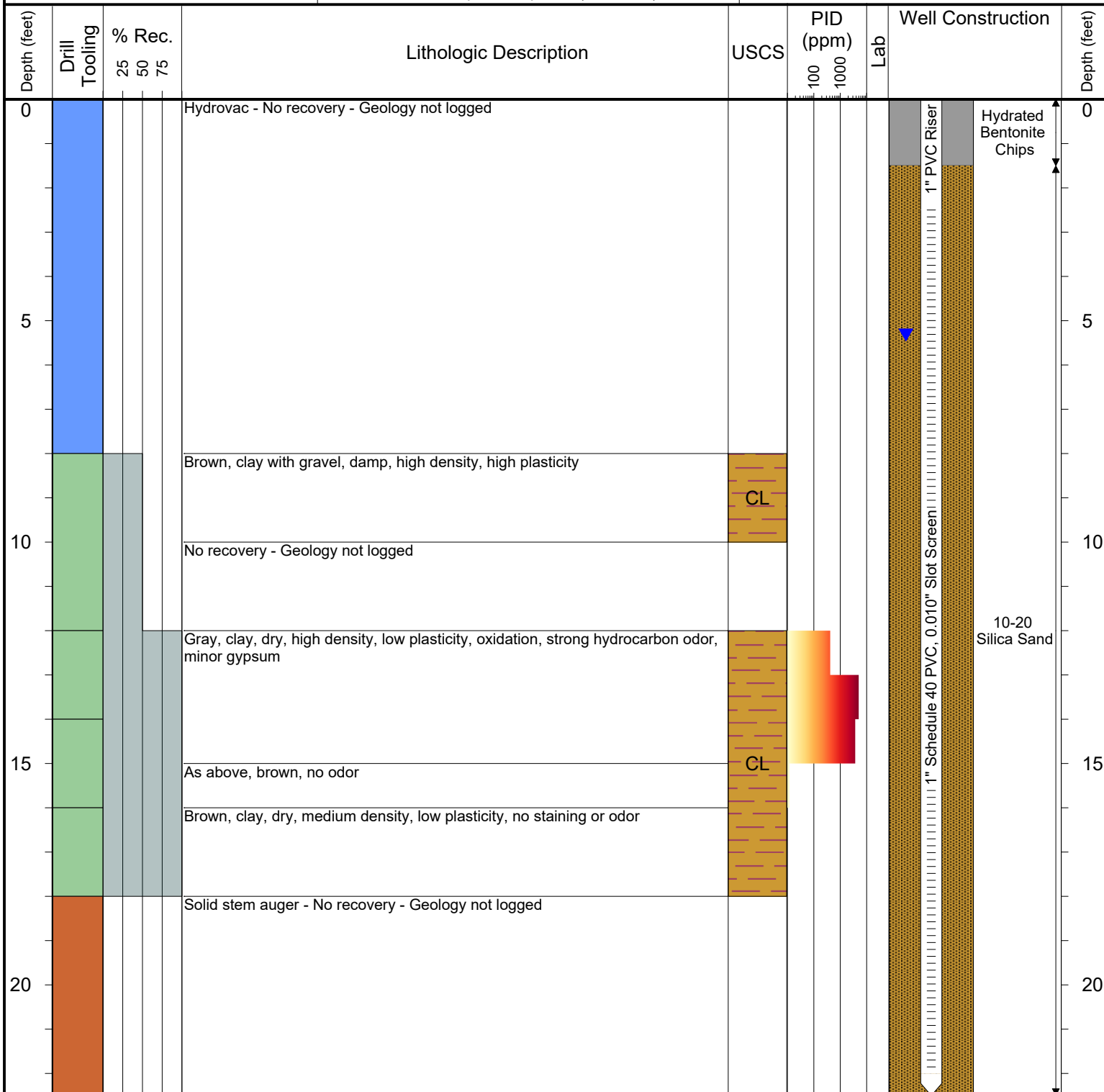
SURFACE COMPLETION: Flush Mount

LATITUDE (WGS 1984): 40.071549

LONGITUDE (WGS 1984): -104.983121

CASING ELEVATION (FT. AMSL): 5054.2

GROUND ELEVATION (FT. AMSL): 5054.32



Drilling / Sample Method:

Macro-Core Hydrovac Solid Stem Auger
 Expendable Well Tip Hand Auger

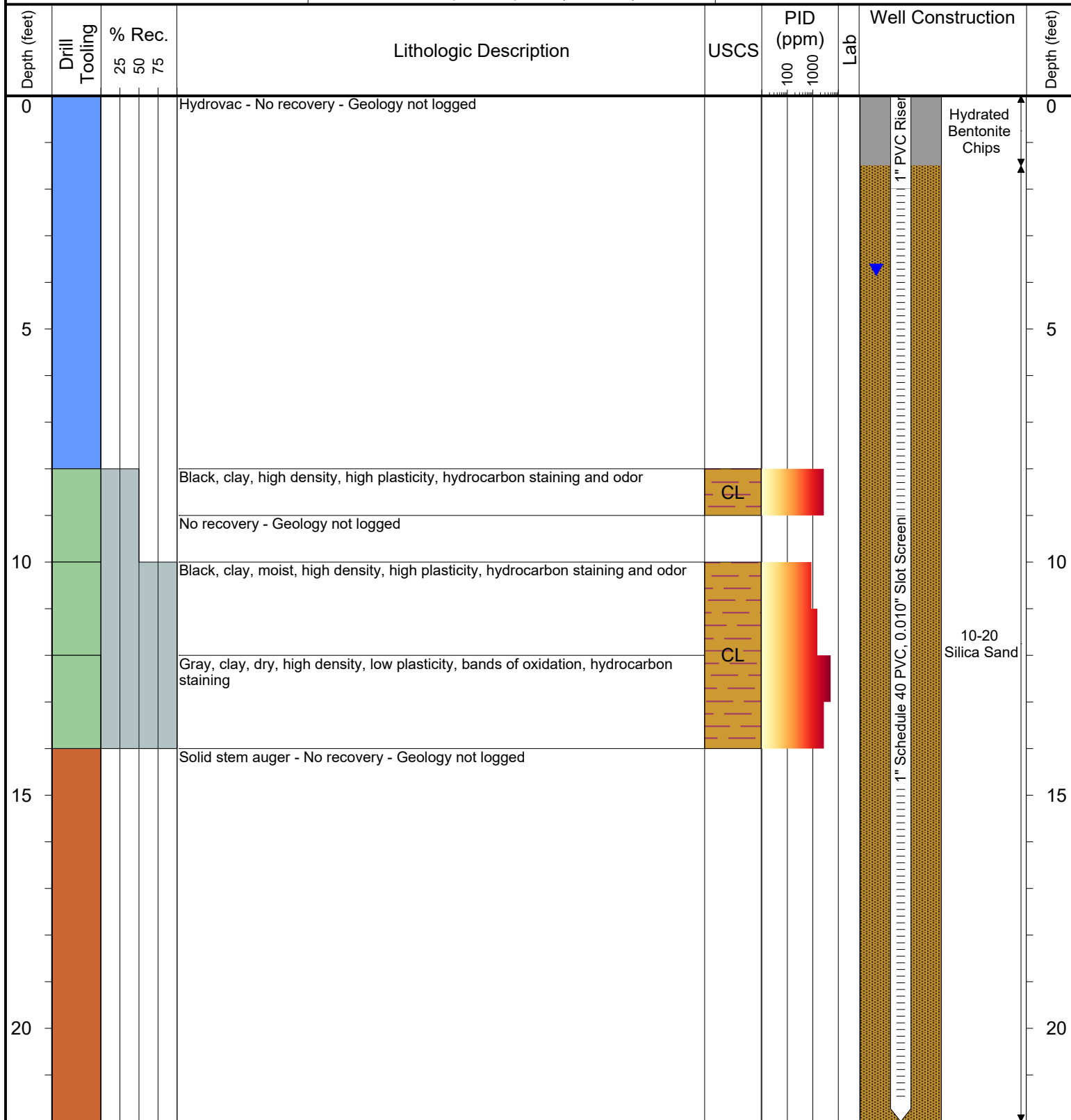
Laboratory Sample Types:

Geotechnical Lab Geotechnical & Analytical Chemistry Lab
 Analytical Chemistry Lab



6899 Pecos Street, Unit C
Denver, Colorado 80221

CLIENT: Kerr-McGee Oil & Gas Onshore LP	CPC 41-10 #1, Champlin 31-10 #3, 32-10 #2, 42-10 #4 Production Facility
LOGGED BY: Alexander Hamilton	
PROJECT MANAGER: Robert Cornez	
DRILLING CONTRACTOR: Tasman Geosciences, Inc.	BORING / WELL ID: BH02 (Destroyed)
DRILLING EQUIPMENT: AMS Powerprobe 9300-SK	SURFACE COMPLETION: Flush Mount
DRILL BIT SIZE (INCHES): 2.375	LATITUDE (WGS 1984): 40.071422
DATE STARTED - COMPLETED: 5/1/2018	LONGITUDE (WGS 1984): -104.9832749
TOTAL WELL DEPTH (FT. BGS): 22	CASING ELEVATION (FT. AMSL): 5053.28
DEPTH TO WATER (FT. BGS): 3.73 (6/29/2018) ▼	GROUND ELEVATION (FT. AMSL): 5053.41



Drilling / Sample Method:

Macro-Core Hydrovac Solid Stem Auger
 Expendable Well Tip Hand Auger

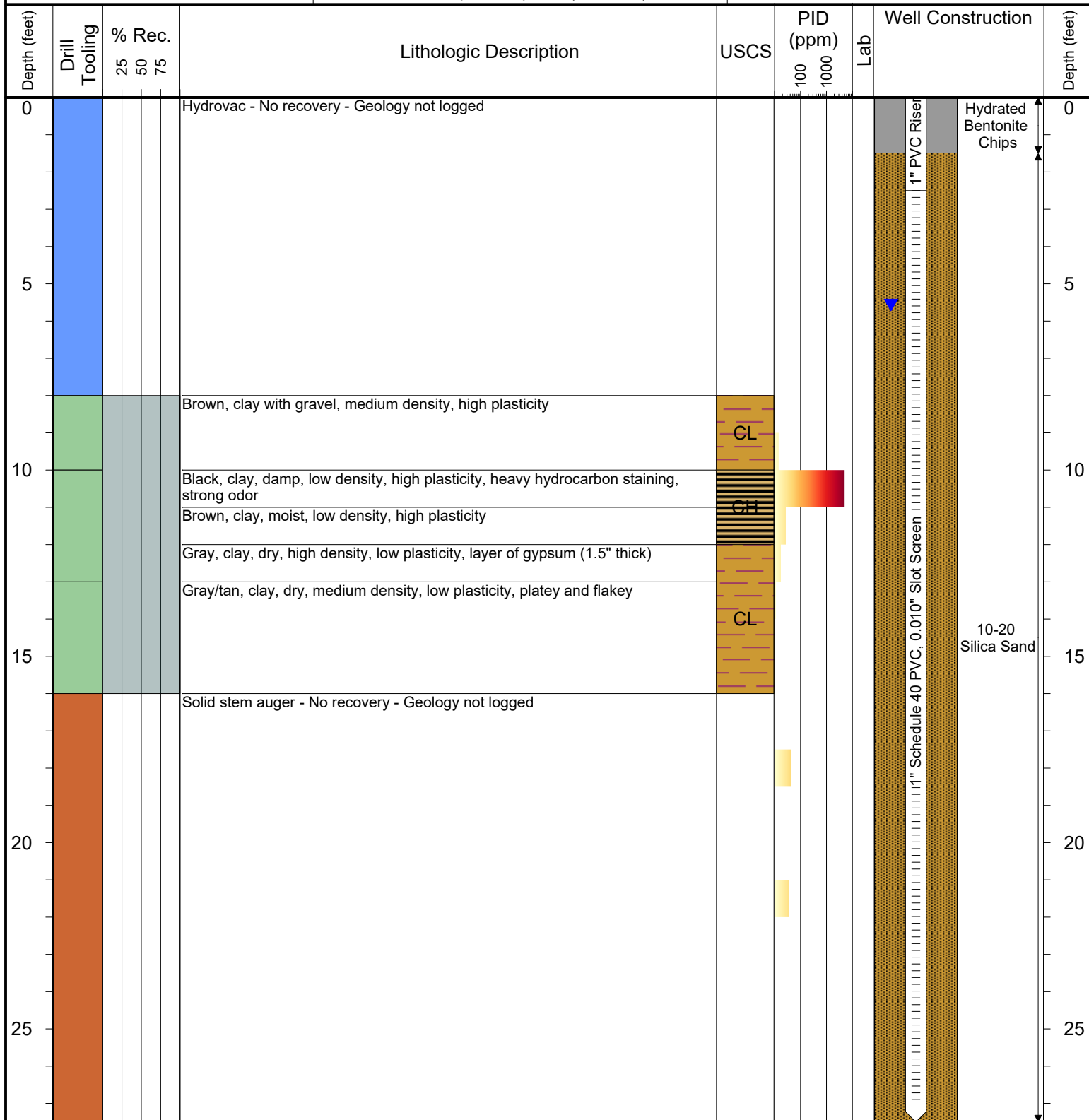
Laboratory Sample Types:

Geotechnical Lab Analytical Chemistry Lab
 Geotechnical & Analytical Chemistry Lab



6899 Pecos Street, Unit C
Denver, Colorado 80221

CLIENT: Kerr-McGee Oil & Gas Onshore LP	CPC 41-10 #1, Champlin 31-10 #3, 32-10 #2, 42-10 #4 Production Facility
LOGGED BY: Alexander Hamilton	
PROJECT MANAGER: Robert Cornez	BORING / WELL ID: BH03 (Destroyed)
DRILLING CONTRACTOR: Tasman Geosciences, Inc.	
DRILLING EQUIPMENT: AMS Powerprobe 9300-SK	SURFACE COMPLETION: Flush Mount
DRILL BIT SIZE (INCHES): 2.375	LATITUDE (WGS 1984): 40.071453
DATE STARTED - COMPLETED: 5/1/2018	LONGITUDE (WGS 1984): -104.98309589
TOTAL WELL DEPTH (FT. BGS): 27.5	CASING ELEVATION (FT. AMSL): 5053.92
DEPTH TO WATER (FT. BGS): 5.56 (6/29/2018) ▼	GROUND ELEVATION (FT. AMSL): 5054.04



Drilling / Sample Method:

Macro-Core Hydrovac Solid Stem Auger
 Expendable Well Tip Hand Auger

Laboratory Sample Types:

Geotechnical Lab Geotechnical & Analytical Chemistry Lab
 Analytical Chemistry Lab



6899 Pecos Street, Unit C
Denver, Colorado 80221

CLIENT: Kerr-McGee Oil & Gas Onshore LP

LOGGED BY: Alexander Hamilton

PROJECT MANAGER: Robert Cornez

DRILLING CONTRACTOR: Tasman Geosciences, Inc.

DRILLING EQUIPMENT: AMS Powerprobe 9300-SK

DRILL BIT SIZE (INCHES): 2.375

DATE STARTED - COMPLETED: 5/1/2018

TOTAL WELL DEPTH (FT. BGS): 22

DEPTH TO WATER (FT. BGS): 4.60 (6/29/2018)

CPC 41-10 #1, Champlin 31-10 #3,
32-10 #2, 42-10 #4 Production Facility

BORING / WELL ID: BH04 (Destroyed)

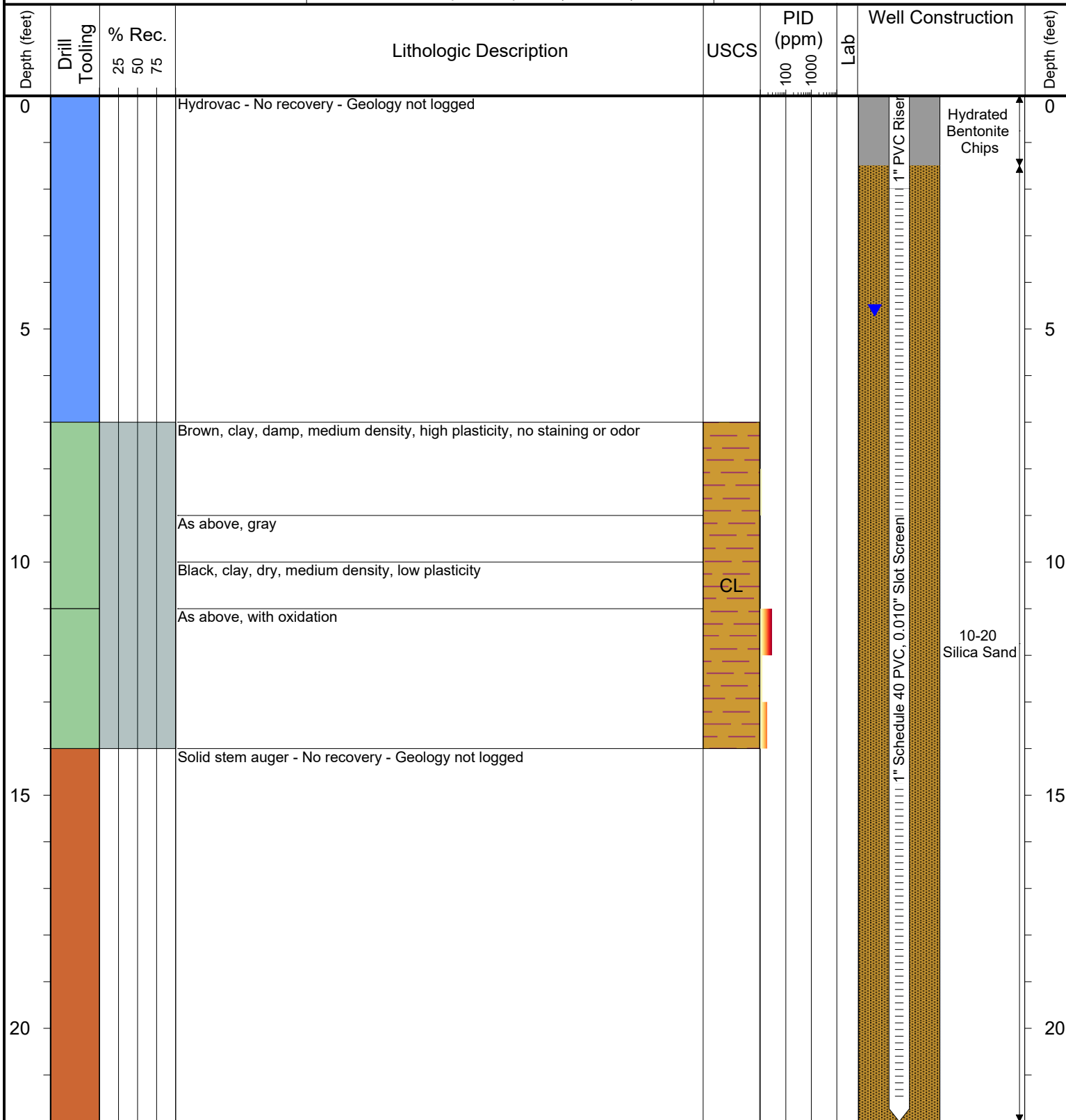
SURFACE COMPLETION: Flush Mount

LATITUDE (WGS 1984): 40.071323

LONGITUDE (WGS 1984): -104.98309383

CASING ELEVATION (FT. AMSL): 5052.82

GROUND ELEVATION (FT. AMSL): 5053.03



Drilling / Sample Method:

Macro-Core

Hydrovac

Solid Stem Auger

Expendable Well Tip

Hand Auger

Laboratory Sample Types:

Geotechnical Lab

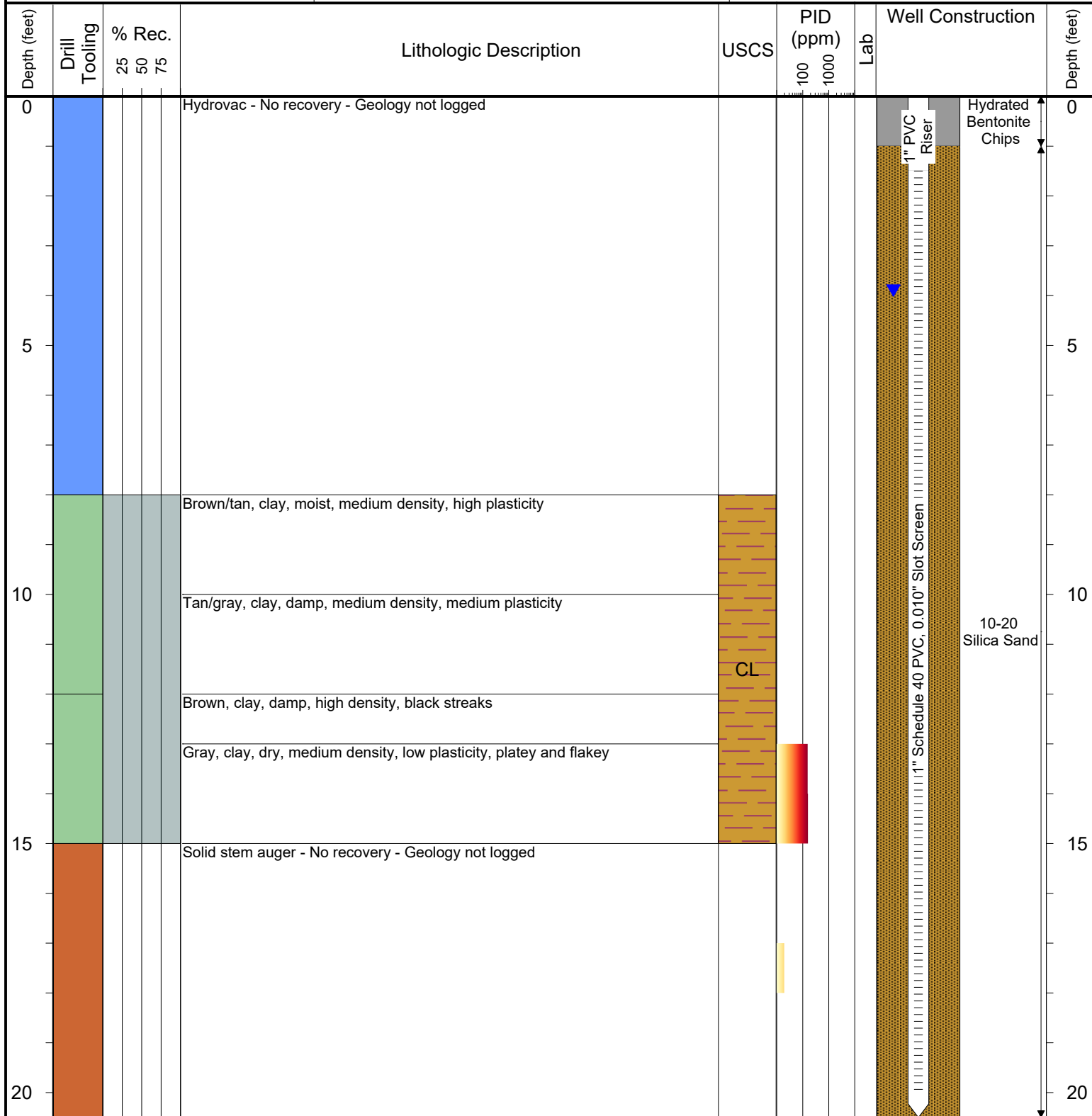
Analytical Chemistry Lab

Geotechnical & Analytical Chemistry Lab



6899 Pecos Street, Unit C
Denver, Colorado 80221

CLIENT: Kerr-McGee Oil & Gas Onshore LP	CPC 41-10 #1, Champlin 31-10 #3, 32-10 #2, 42-10 #4 Production Facility
LOGGED BY: Alexander Hamilton	
PROJECT MANAGER: Robert Cornez	BORING / WELL ID: BH05 (Destroyed)
DRILLING CONTRACTOR: Tasman Geosciences, Inc.	
DRILLING EQUIPMENT: AMS Powerprobe 9300-SK	SURFACE COMPLETION: Flush Mount
DRILL BIT SIZE (INCHES): 2.375	LATITUDE (WGS 1984): 40.071412
DATE STARTED - COMPLETED: 5/1/2018	LONGITUDE (WGS 1984): -104.9828898
TOTAL WELL DEPTH (FT. BGS): 20.5	CASING ELEVATION (FT. AMSL): 5051.56
DEPTH TO WATER (FT. BGS): 3.90 (6/29/2018) ▼	GROUND ELEVATION (FT. AMSL): 5051.66



Drilling / Sample Method:

Macro-Core Hydrovac Solid Stem Auger
 Expendable Well Tip Hand Auger

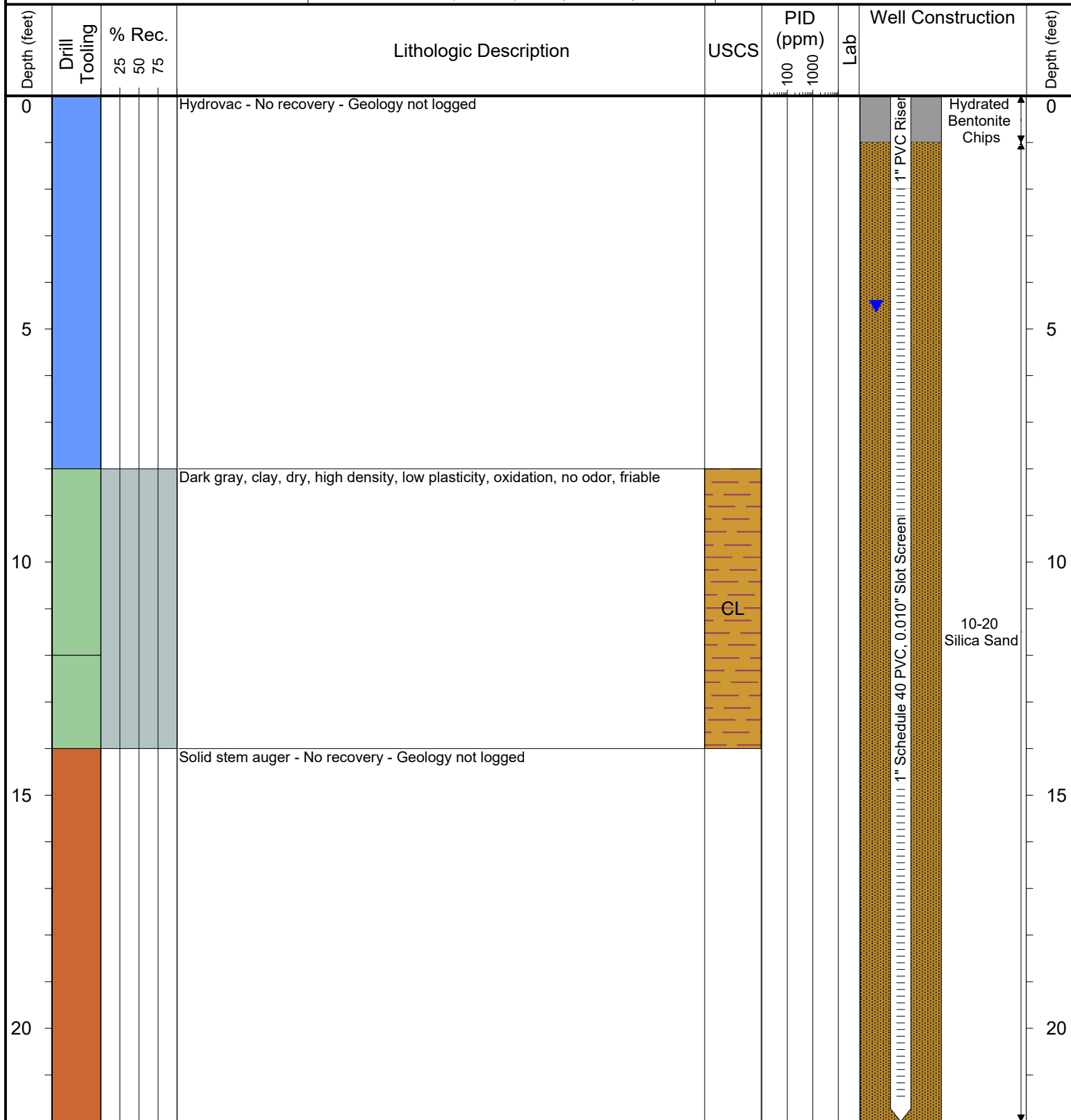
Laboratory Sample Types:

Geotechnical Lab Geotechnical & Analytical Chemistry Lab
 Analytical Chemistry Lab



6899 Pecos Street, Unit C
Denver, Colorado 80221

CLIENT: Kerr-McGee Oil & Gas Onshore LP	CPC 41-10 #1, Champlin 31-10 #3, 32-10 #2, 42-10 #4 Production Facility
LOGGED BY: Alexander Hamilton	
PROJECT MANAGER: Robert Cornez	
DRILLING CONTRACTOR: Tasman Geosciences, Inc.	BORING / WELL ID: BH06 (Destroyed)
DRILLING EQUIPMENT: AMS Powerprobe 9300-SK	SURFACE COMPLETION: Flush Mount
DRILL BIT SIZE (INCHES): 2.375	LATITUDE (WGS 1984): 40.071314
DATE STARTED - COMPLETED: 8/9/2018	LONGITUDE (WGS 1984): -104.98288444
TOTAL WELL DEPTH (FT. BGS): 22	CASING ELEVATION (FT. AMSL): 5051.69
DEPTH TO WATER (FT. BGS): 4.51 (8/27/2018) ▼	GROUND ELEVATION (FT. AMSL): 5051.89



Drilling / Sample Method:

Macro-Core Hydrovac Solid Stem Auger
 Expendable Well Tip Hand Auger

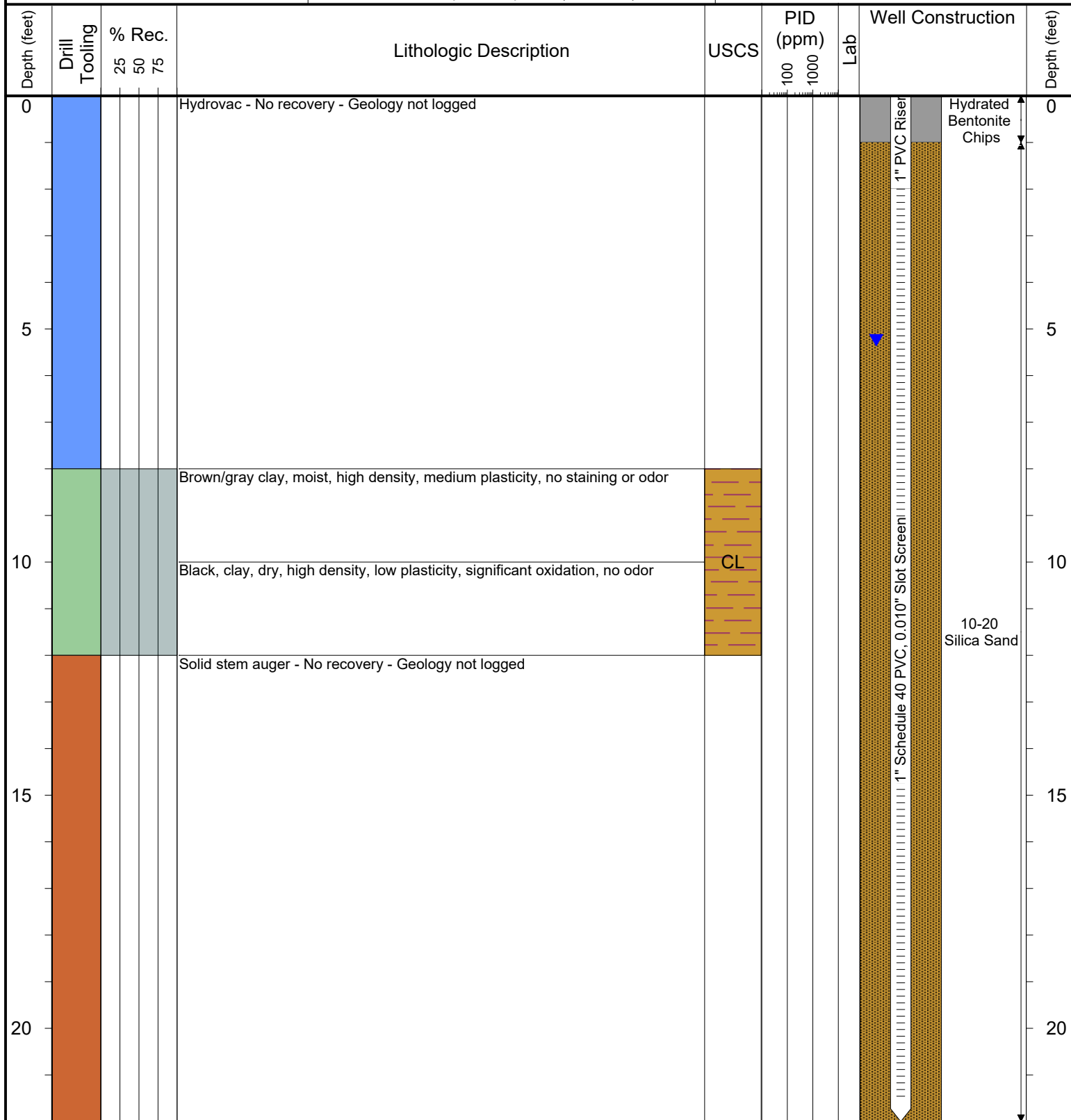
Laboratory Sample Types:

Geotechnical Lab Geotechnical & Analytical Chemistry Lab
 Analytical Chemistry Lab



6899 Pecos Street, Unit C
Denver, Colorado 80221

CLIENT: Kerr-McGee Oil & Gas Onshore LP	CPC 41-10 #1, Champlin 31-10 #3, 32-10 #2, 42-10 #4 Production Facility
LOGGED BY: Alexander Hamilton	
PROJECT MANAGER: Robert Cornez	BORING / WELL ID: BH07
DRILLING CONTRACTOR: Tasman Geosciences, Inc.	
DRILLING EQUIPMENT: AMS Powerprobe 9300-SK	SURFACE COMPLETION: Flush Mount
DRILL BIT SIZE (INCHES): 2.375	LATITUDE (WGS 1984): 40.071237
DATE STARTED - COMPLETED: 8/9/2018	LONGITUDE (WGS 1984): -104.98305922
TOTAL WELL DEPTH (FT. BGS): 22	CASING ELEVATION (FT. AMSL): 5052.95
DEPTH TO WATER (FT. BGS): 5.24 (8/27/2018)	GROUND ELEVATION (FT. AMSL): 5053.17



Drilling / Sample Method:

Macro-Core Hydrovac Solid Stem Auger
 Expendable Well Tip Hand Auger

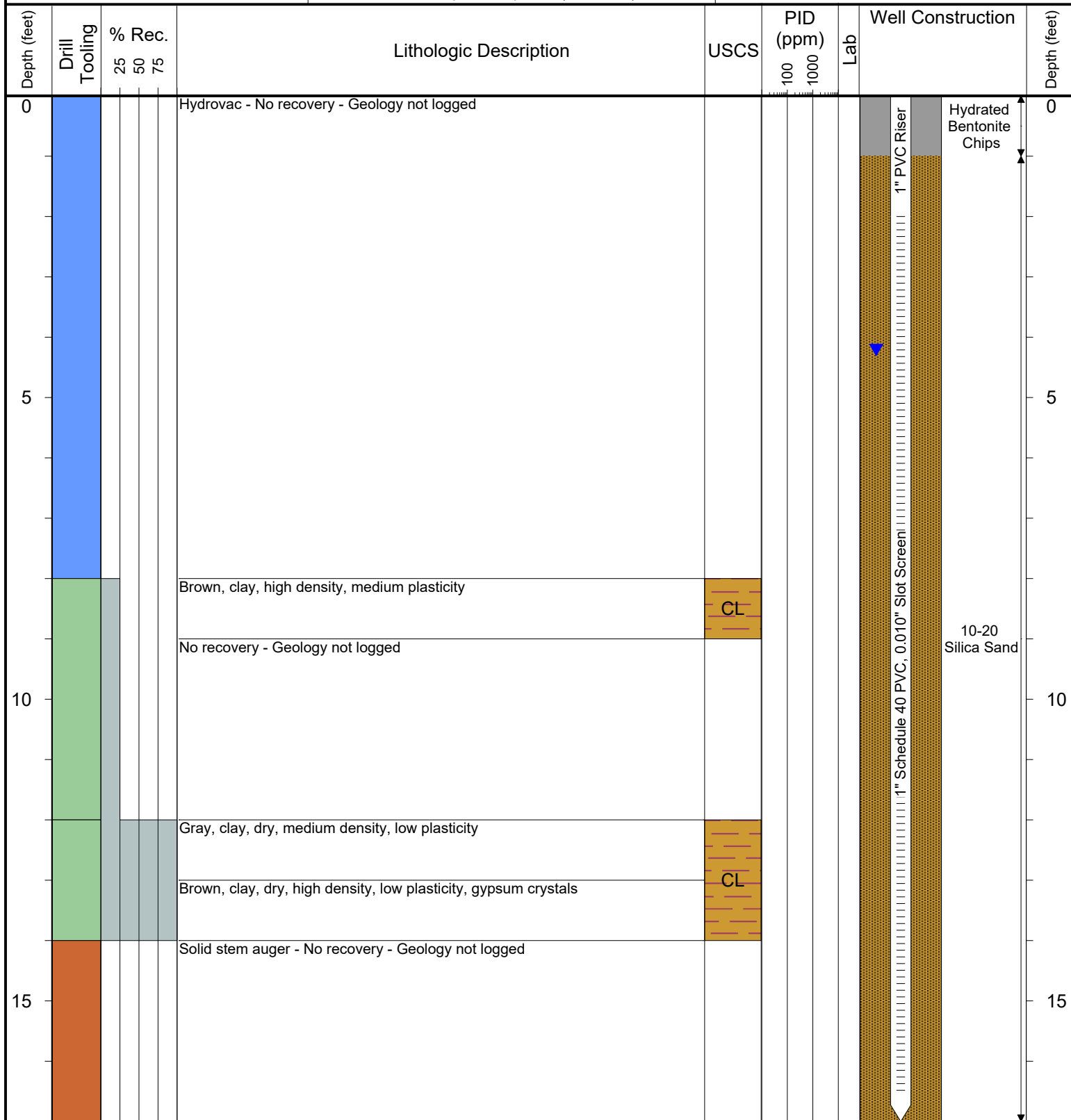
Laboratory Sample Types:

Geotechnical Lab Geotechnical & Analytical Chemistry Lab
 Analytical Chemistry Lab



6899 Pecos Street, Unit C
Denver, Colorado 80221

CLIENT: Kerr-McGee Oil & Gas Onshore LP	CPC 41-10 #1, Champlin 31-10 #3, 32-10 #2, 42-10 #4 Production Facility
LOGGED BY: Alexander Hamilton	
PROJECT MANAGER: Robert Cornez	BORING / WELL ID: BH08 (Destroyed)
DRILLING CONTRACTOR: Tasman Geosciences, Inc.	
DRILLING EQUIPMENT: AMS Powerprobe 9300-SK	SURFACE COMPLETION: Flush Mount
DRILL BIT SIZE (INCHES): 2.375	LATITUDE (WGS 1984): 40.071319
DATE STARTED - COMPLETED: 8/9/2018	LONGITUDE (WGS 1984): -104.98325916
TOTAL WELL DEPTH (FT. BGS): 17	CASING ELEVATION (FT. AMSL): 5053.19
DEPTH TO WATER (FT. BGS): 4.21 (8/27/2018) ▼	GROUND ELEVATION (FT. AMSL): 5053.53



Drilling / Sample Method:

Macro-Core Hydrovac Solid Stem Auger
 Expendable Well Tip Hand Auger

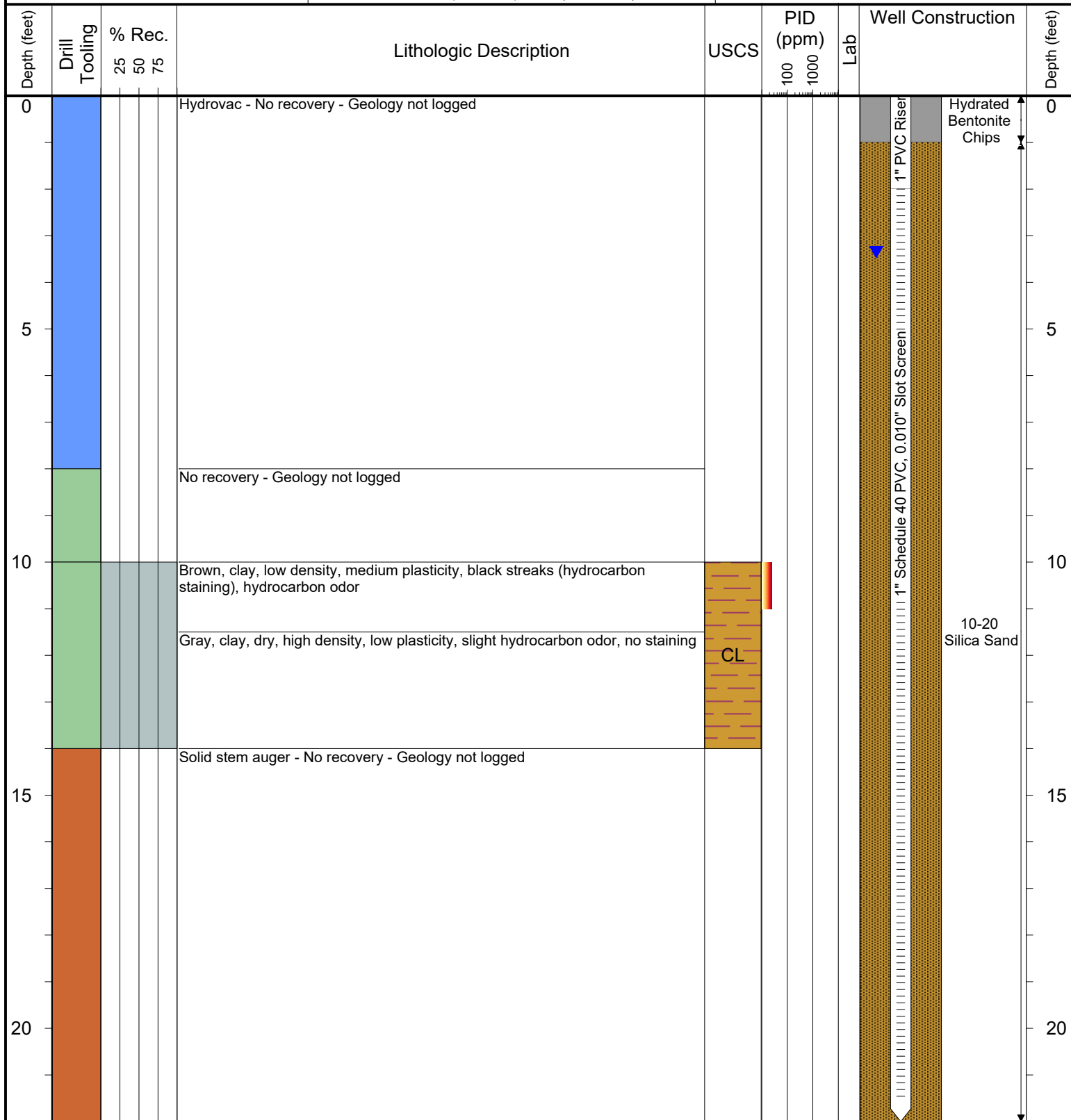
Laboratory Sample Types:

Geotechnical Lab Geotechnical & Analytical Chemistry Lab
 Analytical Chemistry Lab



6899 Pecos Street, Unit C
Denver, Colorado 80221

CLIENT: Kerr-McGee Oil & Gas Onshore LP	CPC 41-10 #1, Champlin 31-10 #3, 32-10 #2, 42-10 #4 Production Facility
LOGGED BY: Alexander Hamilton	
PROJECT MANAGER: Robert Cornez	BORING / WELL ID: BH09
DRILLING CONTRACTOR: Tasman Geosciences, Inc.	
DRILLING EQUIPMENT: AMS Powerprobe 9300-SK	SURFACE COMPLETION: Flush Mount
DRILL BIT SIZE (INCHES): 2.375	LATITUDE (WGS 1984): 40.071385
DATE STARTED - COMPLETED: 8/9/2018	LONGITUDE (WGS 1984): -104.98337019
TOTAL WELL DEPTH (FT. BGS): 22	CASING ELEVATION (FT. AMSL): 5053.37
DEPTH TO WATER (FT. BGS): 3.35 (8/27/2018)	GROUND ELEVATION (FT. AMSL): 5053.53



Drilling / Sample Method:

Macro-Core Hydrovac Solid Stem Auger
 Expendable Well Tip Hand Auger

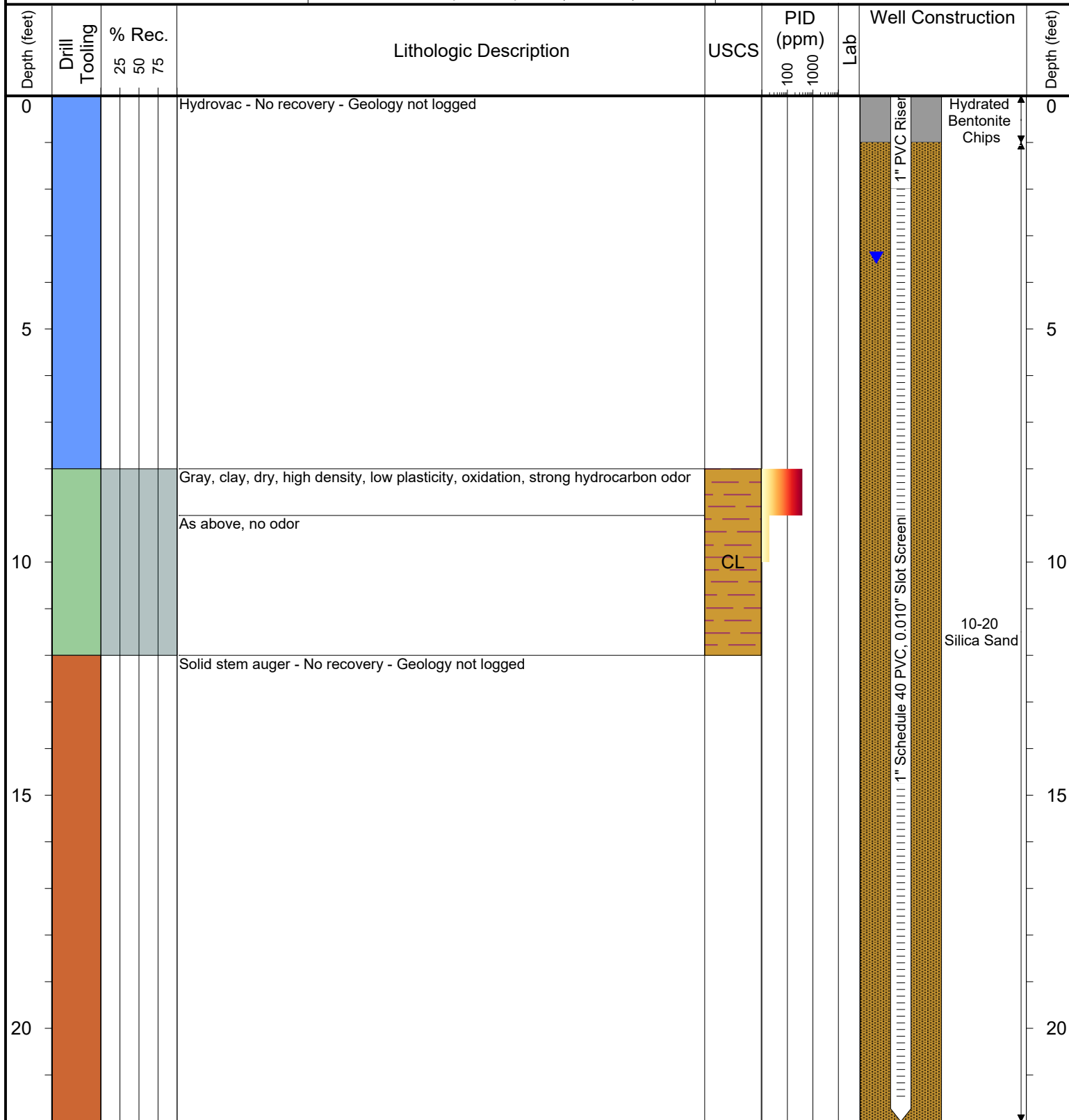
Laboratory Sample Types:

Geotechnical Lab Geotechnical & Analytical Chemistry Lab
 Analytical Chemistry Lab



6899 Pecos Street, Unit C
Denver, Colorado 80221

CLIENT: Kerr-McGee Oil & Gas Onshore LP	CPC 41-10 #1, Champlin 31-10 #3, 32-10 #2, 42-10 #4 Production Facility
LOGGED BY: Alexander Hamilton	
PROJECT MANAGER: Robert Cornez	BORING / WELL ID: BH10
DRILLING CONTRACTOR: Tasman Geosciences, Inc.	
DRILLING EQUIPMENT: AMS Powerprobe 9300-SK	SURFACE COMPLETION: Flush Mount
DRILL BIT SIZE (INCHES): 2.375	LATITUDE (WGS 1984): 40.071383
DATE STARTED - COMPLETED: 8/10/2018	LONGITUDE (WGS 1984): -104.98279137
TOTAL WELL DEPTH (FT. BGS): 22	CASING ELEVATION (FT. AMSL): 5050.97
DEPTH TO WATER (FT. BGS): 3.47 (8/27/2018) ▼	GROUND ELEVATION (FT. AMSL): 5051.27



Drilling / Sample Method:

Macro-Core Hydrovac Solid Stem Auger
 Expendable Well Tip Hand Auger

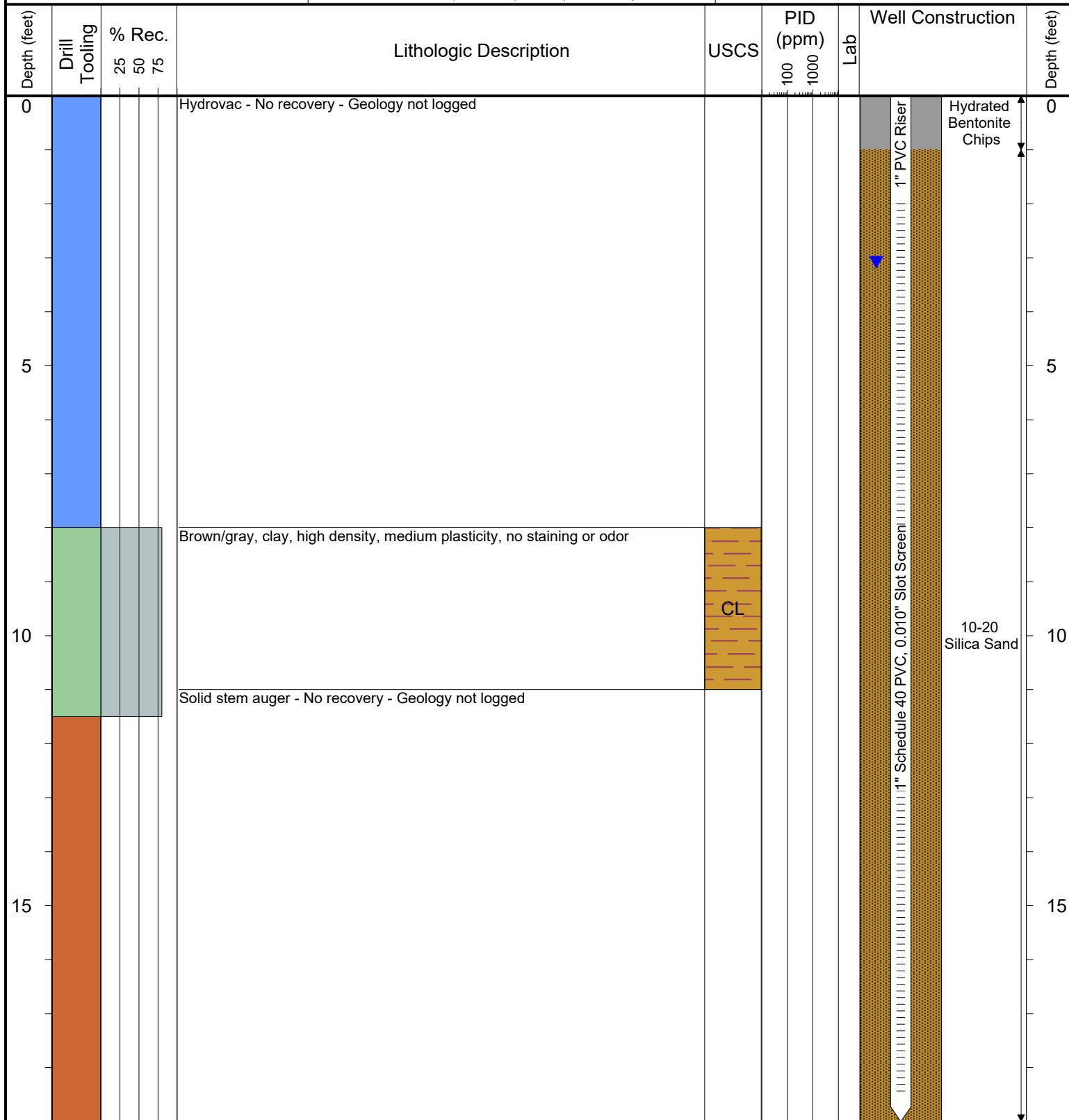
Laboratory Sample Types:

Geotechnical Lab Geotechnical & Analytical Chemistry Lab
 Analytical Chemistry Lab



6899 Pecos Street, Unit C
Denver, Colorado 80221

CLIENT: Kerr-McGee Oil & Gas Onshore LP	CPC 41-10 #1, Champlin 31-10 #3, 32-10 #2, 42-10 #4 Production Facility
LOGGED BY: Alexander Hamilton	
PROJECT MANAGER: Robert Cornez	BORING / WELL ID: BH11
DRILLING CONTRACTOR: Tasman Geosciences, Inc.	
DRILLING EQUIPMENT: AMS Powerprobe 9300-SK	SURFACE COMPLETION: Flush Mount
DRILL BIT SIZE (INCHES): 2.375	LATITUDE (WGS 1984): 40.071461
DATE STARTED - COMPLETED: '8/10/2018 - 8/23/2018	LONGITUDE (WGS 1984): -104.982801
TOTAL WELL DEPTH (FT. BGS): 19	CASING ELEVATION (FT. AMSL): 5050.05
DEPTH TO WATER (FT. BGS): 3.08 (8/27/2018) ▼	GROUND ELEVATION (FT. AMSL): 5050.77



Drilling / Sample Method:

Macro-Core Hydrovac Solid Stem Auger
Expendable Well Tip Hand Auger

Laboratory Sample Types:

Geotechnical Lab Geotechnical & Analytical Chemistry Lab
Analytical Chemistry Lab



6899 Pecos Street, Unit C
Denver, Colorado 80221

CLIENT: Kerr-McGee Oil & Gas Onshore LP

LOGGED BY: Eric Siegel, P.G.

PROJECT MANAGER: Robert Cornez

DRILLING CONTRACTOR: Tasman Geosciences, Inc.

DRILLING EQUIPMENT: AMS Powerprobe 9300-SK

DRILL BIT SIZE (INCHES): 2.375

DATE STARTED - COMPLETED: 9/20/2018

TOTAL WELL DEPTH (FT. BGS): 15

DEPTH TO WATER (FT. BGS): 3.97 (10/2/18)

CPC 41-10 #1, Champlin 31-10 #3,
32-10 #2, 42-10 #4 Production Facility

BORING / WELL ID: BH12

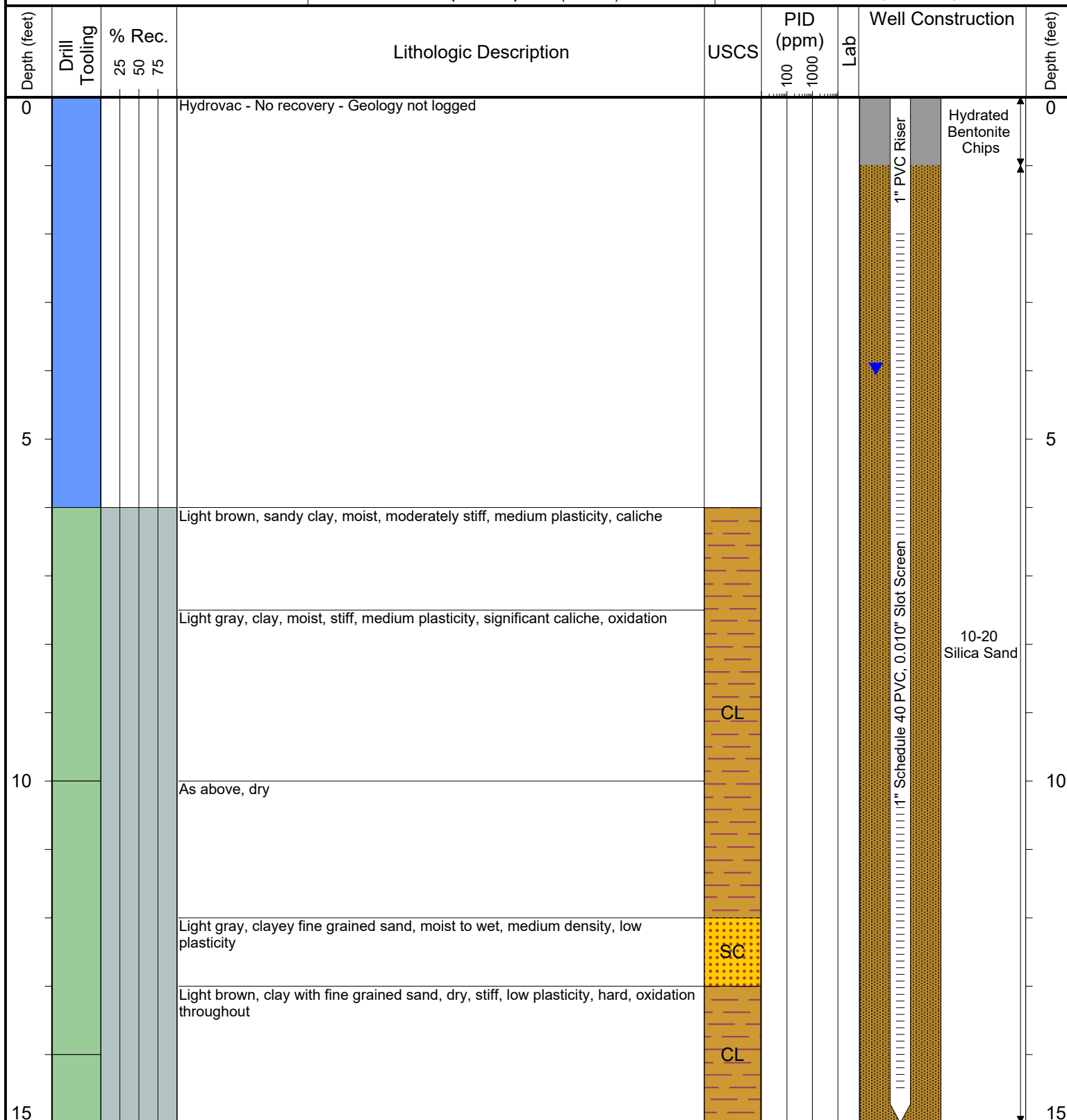
SURFACE COMPLETION: Flush Mount

LATITUDE (WGS 1984): 40.0714289

LONGITUDE (WGS 1984): -104.983436

CASING ELEVATION (FT. AMSL): 5053.66

GROUND ELEVATION (FT. AMSL): 5053.95



Drilling / Sample Method:

Macro-Core

Hydrovac

Solid Stem Auger

Expendable Well Tip

Hand Auger

Laboratory Sample Types:

Geotechnical Lab

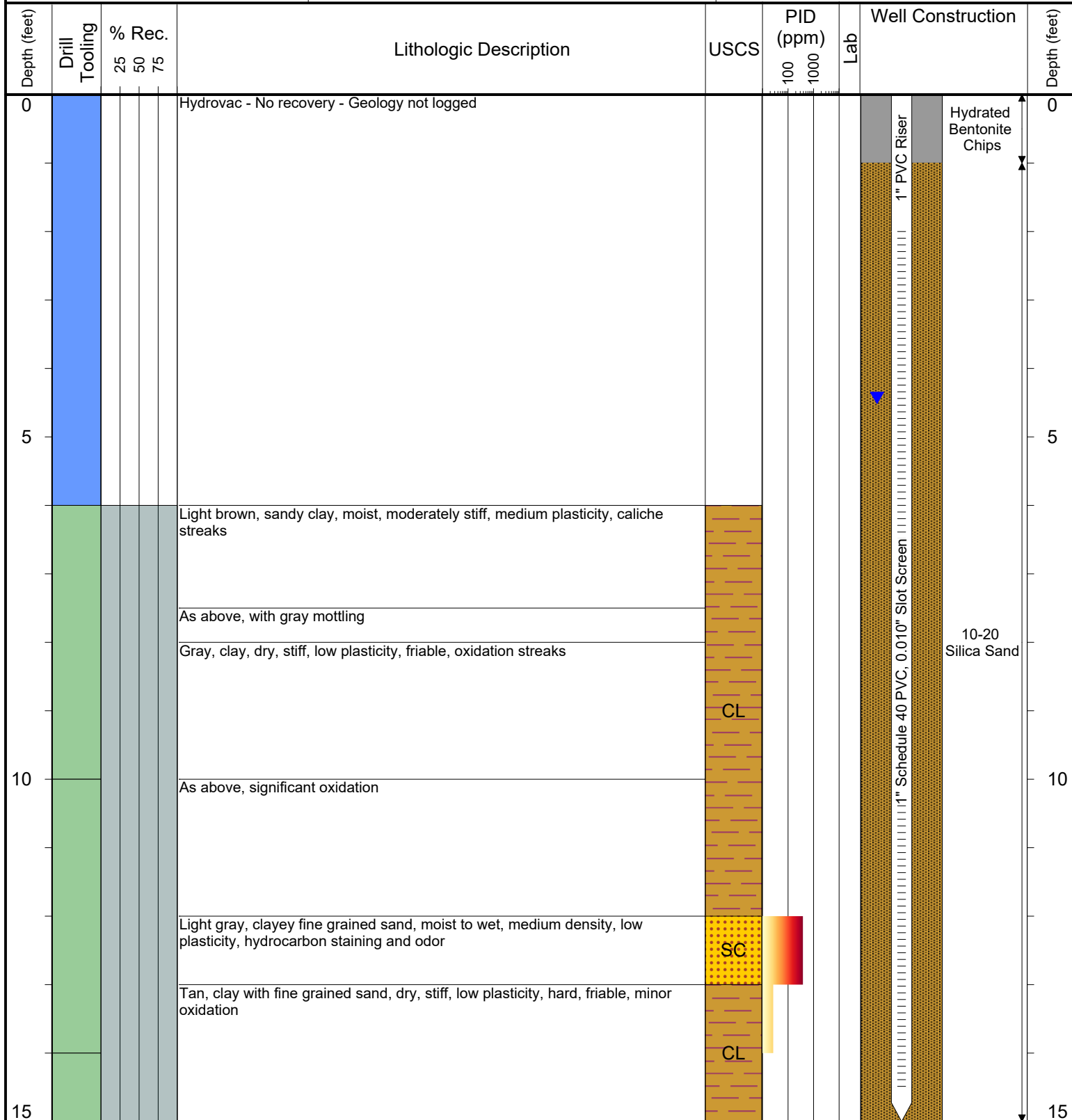
Analytical Chemistry Lab

Geotechnical & Analytical Chemistry Lab



6899 Pecos Street, Unit C
Denver, Colorado 80221

CLIENT: Kerr-McGee Oil & Gas Onshore LP	CPC 41-10 #1, Champlin 31-10 #3, 32-10 #2, 42-10 #4 Production Facility
LOGGED BY: Eric Siegel, P.G.	
PROJECT MANAGER: Robert Cornez	BORING / WELL ID: BH13
DRILLING CONTRACTOR: Tasman Geosciences, Inc.	
DRILLING EQUIPMENT: AMS Powerprobe 9300-SK	SURFACE COMPLETION: Flush Mount
DRILL BIT SIZE (INCHES): 2.375	LATITUDE (WGS 1984): 40.0713282
DATE STARTED - COMPLETED: 9/20/2018	LONGITUDE (WGS 1984): -104.983437
TOTAL WELL DEPTH (FT. BGS): 15	CASING ELEVATION (FT. AMSL): 5053.92
DEPTH TO WATER (FT. BGS): 4.43 (10/2/18)	GROUND ELEVATION (FT. AMSL): 5054.21



Drilling / Sample Method:

- Macro-Core
- Hydrovac
- Solid Stem Auger
- Expendable Well Tip
- Hand Auger

Laboratory Sample Types:

- Geotechnical Lab
- Analytical Chemistry Lab
- Geotechnical & Analytical Chemistry Lab



6899 Pecos Street, Unit C
Denver, Colorado 80221

CLIENT: Kerr-McGee Oil & Gas Onshore LP

LOGGED BY: Eric Siegel, P.G.

PROJECT MANAGER: Robert Cornez

DRILLING CONTRACTOR: Tasman Geosciences, Inc.

DRILLING EQUIPMENT: AMS Powerprobe 9300-SK

DRILL BIT SIZE (INCHES): 2.375

DATE STARTED - COMPLETED: 9/20/2018 - 9/21/2018

TOTAL WELL DEPTH (FT. BGS): 15

DEPTH TO WATER (FT. BGS): 7.24 (10/2/18)

CPC 41-10 #1, Champlin 31-10 #3,
32-10 #2, 42-10 #4 Production Facility

BORING / WELL ID: BH14 (Destroyed)

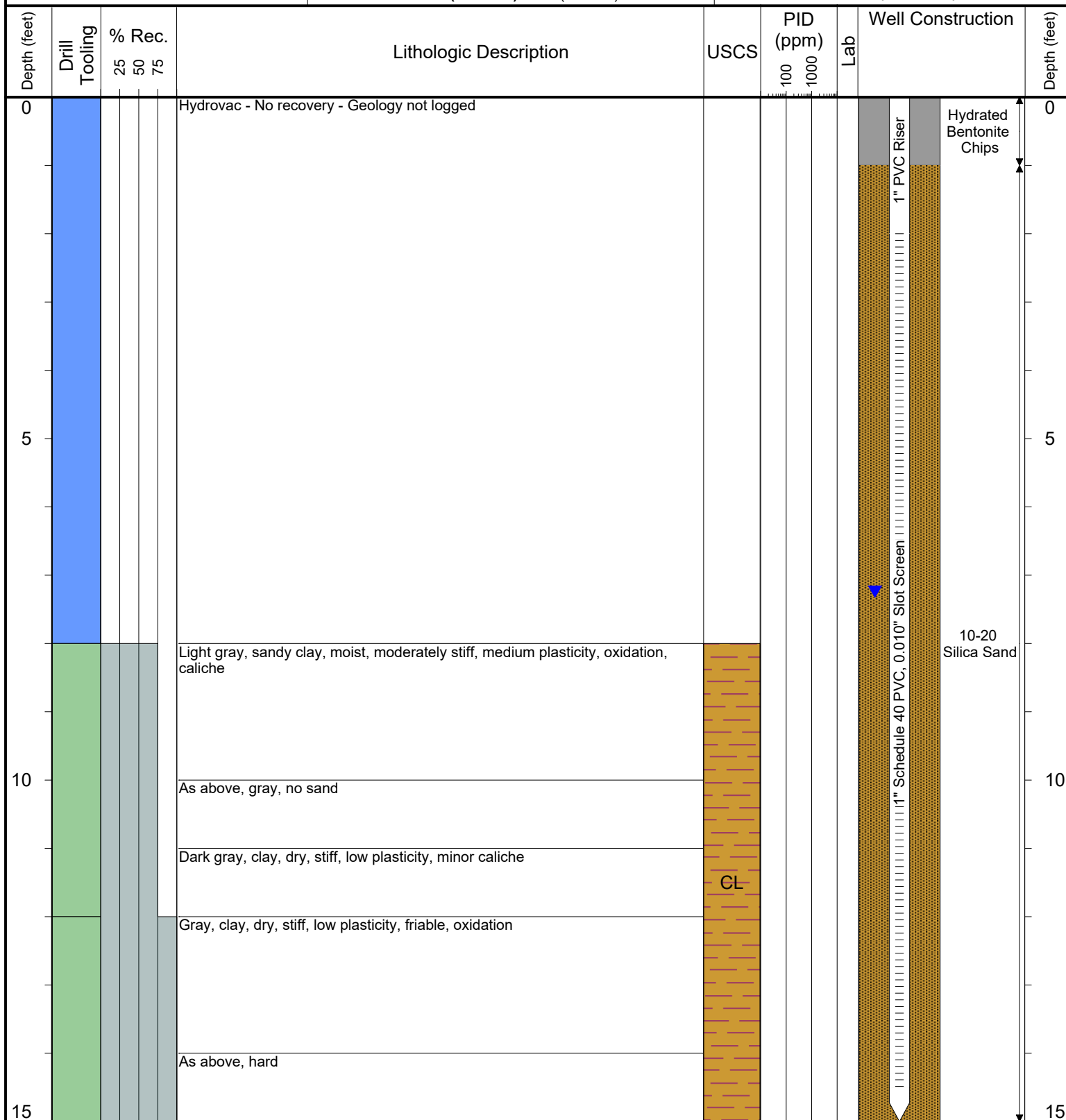
SURFACE COMPLETION: Flush Mount

LATITUDE (WGS 1984): 40.0712142

LONGITUDE (WGS 1984): -104.982879

CASING ELEVATION (FT. AMSL): 5052.08

GROUND ELEVATION (FT. AMSL): 5052.55



Drilling / Sample Method:

Macro-Core Hydrovac Solid Stem Auger
 Expendable Well Tip Hand Auger

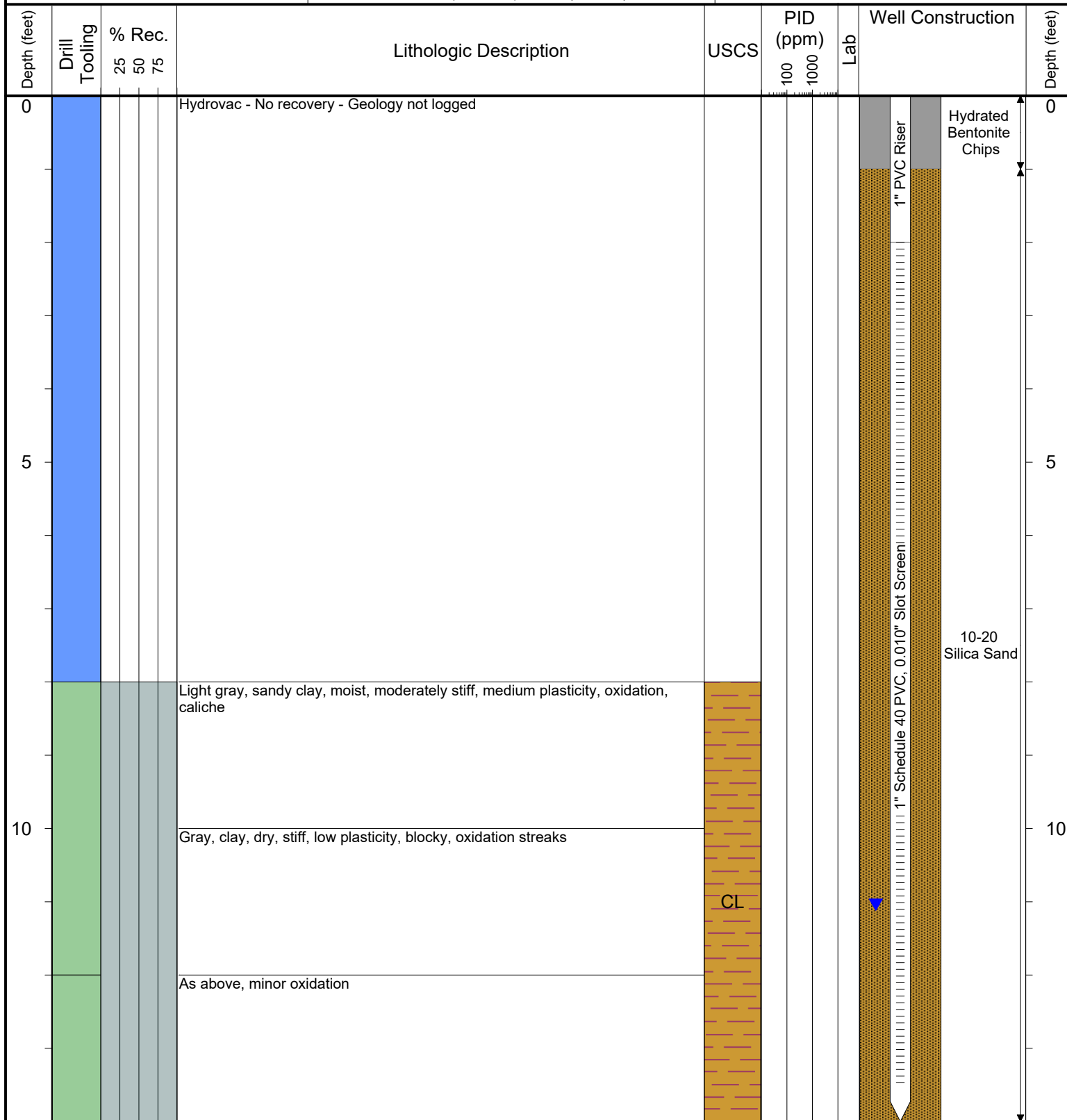
Laboratory Sample Types:

Geotechnical Lab Geotechnical & Analytical Chemistry Lab
 Analytical Chemistry Lab



6899 Pecos Street, Unit C
Denver, Colorado 80221

CLIENT: Kerr-McGee Oil & Gas Onshore LP	CPC 41-10 #1, Champlin 31-10 #3, 32-10 #2, 42-10 #4 Production Facility
LOGGED BY: Eric Siegel, P.G.	
PROJECT MANAGER: Robert Cornez	BORING / WELL ID: BH15
DRILLING CONTRACTOR: Tasman Geosciences, Inc.	
DRILLING EQUIPMENT: AMS Powerprobe 9300-SK	SURFACE COMPLETION: Flush Mount
DRILL BIT SIZE (INCHES): 2.375	LATITUDE (WGS 1984): 40.0712474
DATE STARTED - COMPLETED: 9/20/2018 - 9/21/2018	LONGITUDE (WGS 1984): -104.982755
TOTAL WELL DEPTH (FT. BGS): 14	CASING ELEVATION (FT. AMSL): 5051.12
DEPTH TO WATER (FT. BGS): 11.04 (10/2/18) ▼	GROUND ELEVATION (FT. AMSL): 5051.51



Drilling / Sample Method:

- Macro-Core
- Hydrovac
- Solid Stem Auger
- Expendable Well Tip
- Hand Auger

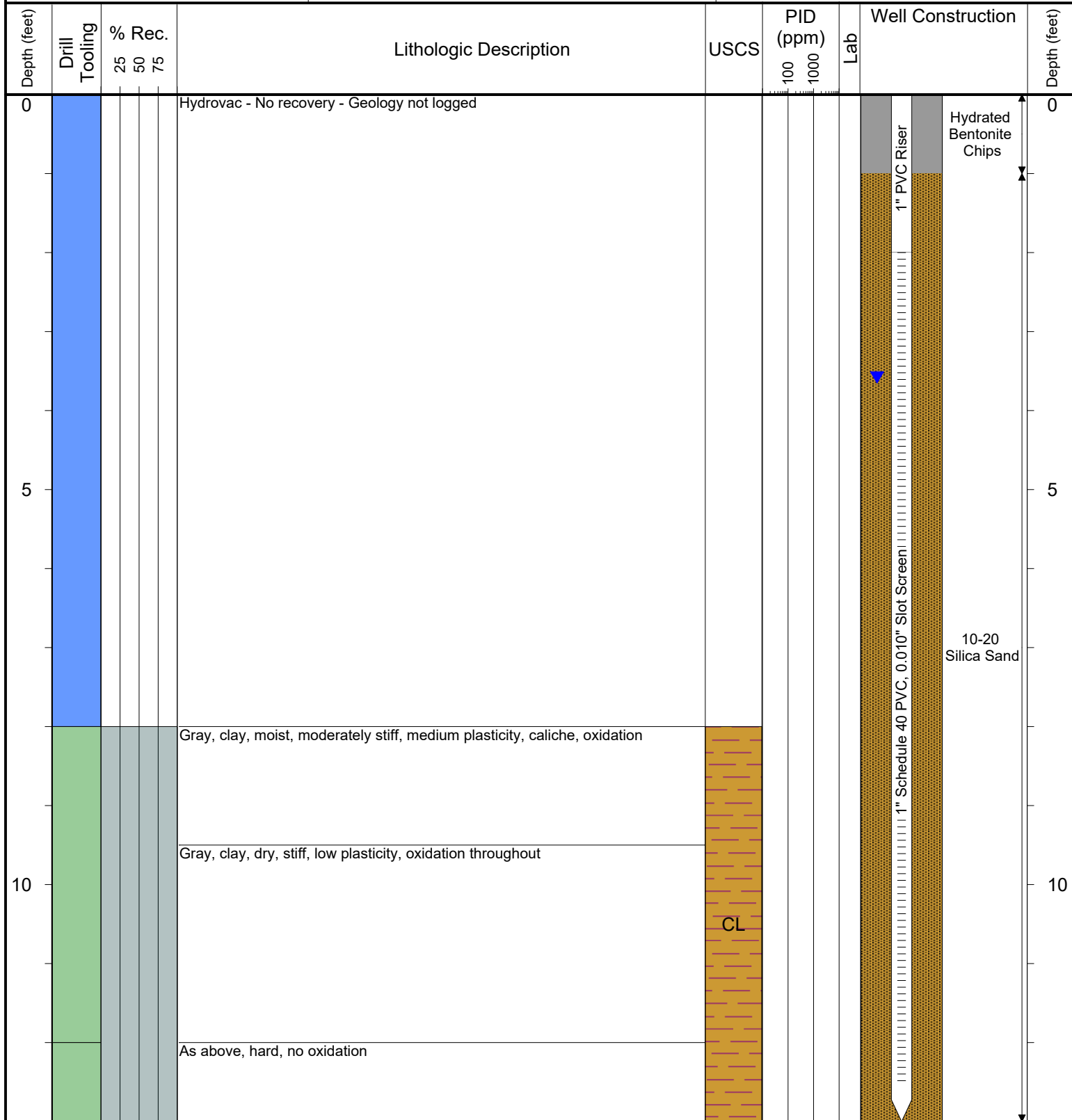
Laboratory Sample Types:

- Geotechnical Lab
- Analytical Chemistry Lab
- Geotechnical & Analytical Chemistry Lab



6899 Pecos Street, Unit C
Denver, Colorado 80221

CLIENT: Kerr-McGee Oil & Gas Onshore LP	CPC 41-10 #1, Champlin 31-10 #3, 32-10 #2, 42-10 #4 Production Facility
LOGGED BY: Eric Siegel, P.G.	
PROJECT MANAGER: Robert Cornez	BORING / WELL ID: BH16
DRILLING CONTRACTOR: Tasman Geosciences, Inc.	
DRILLING EQUIPMENT: AMS Powerprobe 9300-SK	SURFACE COMPLETION: Flush Mount
DRILL BIT SIZE (INCHES): 2.375	LATITUDE (WGS 1984): 40.0714194
DATE STARTED - COMPLETED: 9/20/2018 - 9/21/2018	LONGITUDE (WGS 1984): -104.982677
TOTAL WELL DEPTH (FT. BGS): 13	CASING ELEVATION (FT. AMSL): 5050.43
DEPTH TO WATER (FT. BGS): 3.58 (10/2/18) ▼	GROUND ELEVATION (FT. AMSL): 5050.63



Drilling / Sample Method:

Macro-Core Hydrovac Solid Stem Auger
 Expendable Well Tip Hand Auger

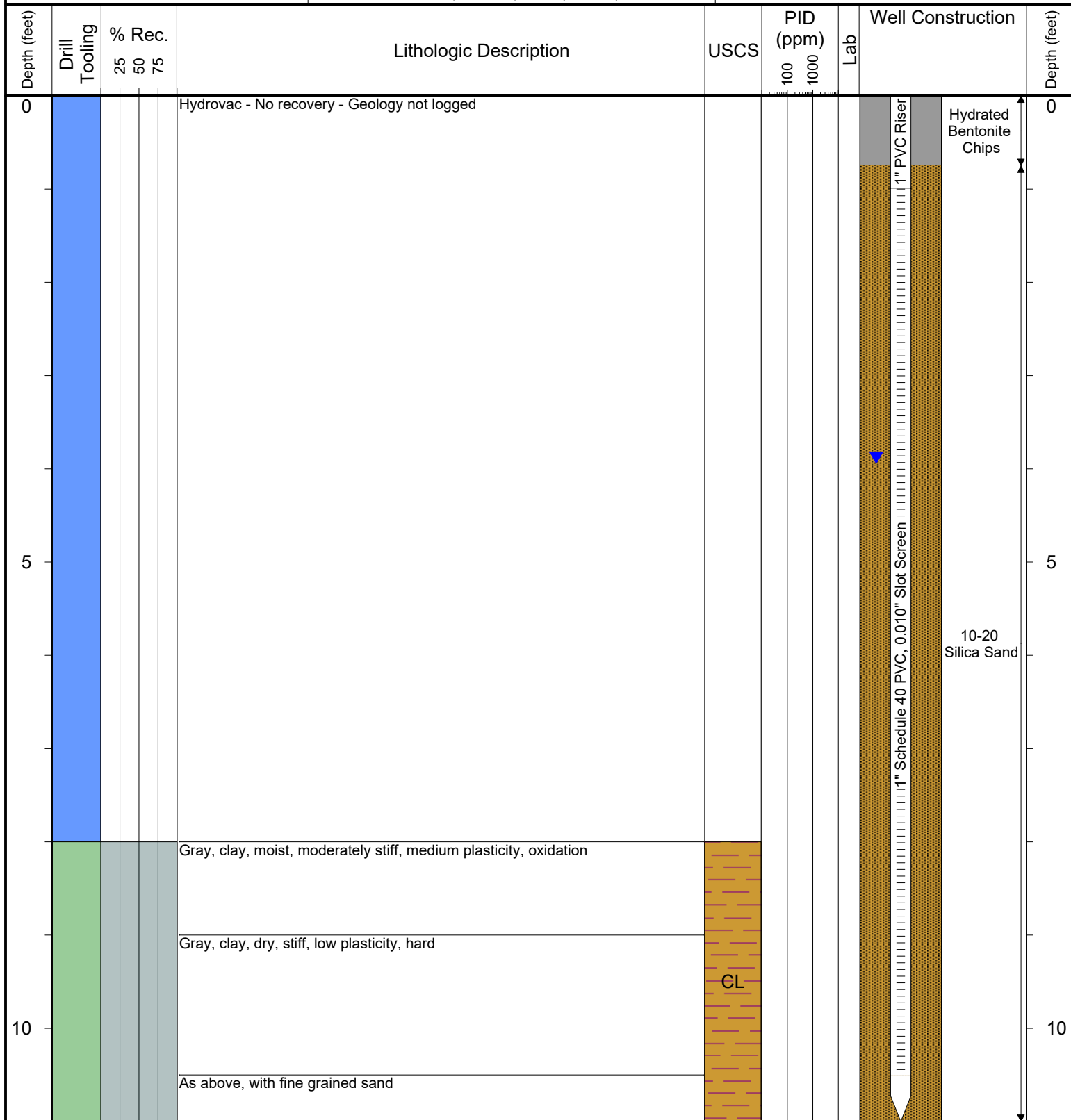
Laboratory Sample Types:

Geotechnical Lab Geotechnical & Analytical Chemistry Lab
 Analytical Chemistry Lab



6899 Pecos Street, Unit C
Denver, Colorado 80221

CLIENT: Kerr-McGee Oil & Gas Onshore LP	CPC 41-10 #1, Champlin 31-10 #3, 32-10 #2, 42-10 #4 Production Facility
LOGGED BY: Eric Siegel, P.G.	
PROJECT MANAGER: Robert Cornez	BORING / WELL ID: BH17
DRILLING CONTRACTOR: Tasman Geosciences, Inc.	
DRILLING EQUIPMENT: AMS Powerprobe 9300-SK	SURFACE COMPLETION: Flush Mount
DRILL BIT SIZE (INCHES): 2.375	LATITUDE (WGS 1984): 40.0714979
DATE STARTED - COMPLETED: 9/20/2018	LONGITUDE (WGS 1984): -104.982715
TOTAL WELL DEPTH (FT. BGS): 11	CASING ELEVATION (FT. AMSL): 5050.25
DEPTH TO WATER (FT. BGS): 3.88 (10/2/18)	GROUND ELEVATION (FT. AMSL): 5050.51



Drilling / Sample Method:

Macro-Core Hydrovac Solid Stem Auger
 Expendable Well Tip Hand Auger

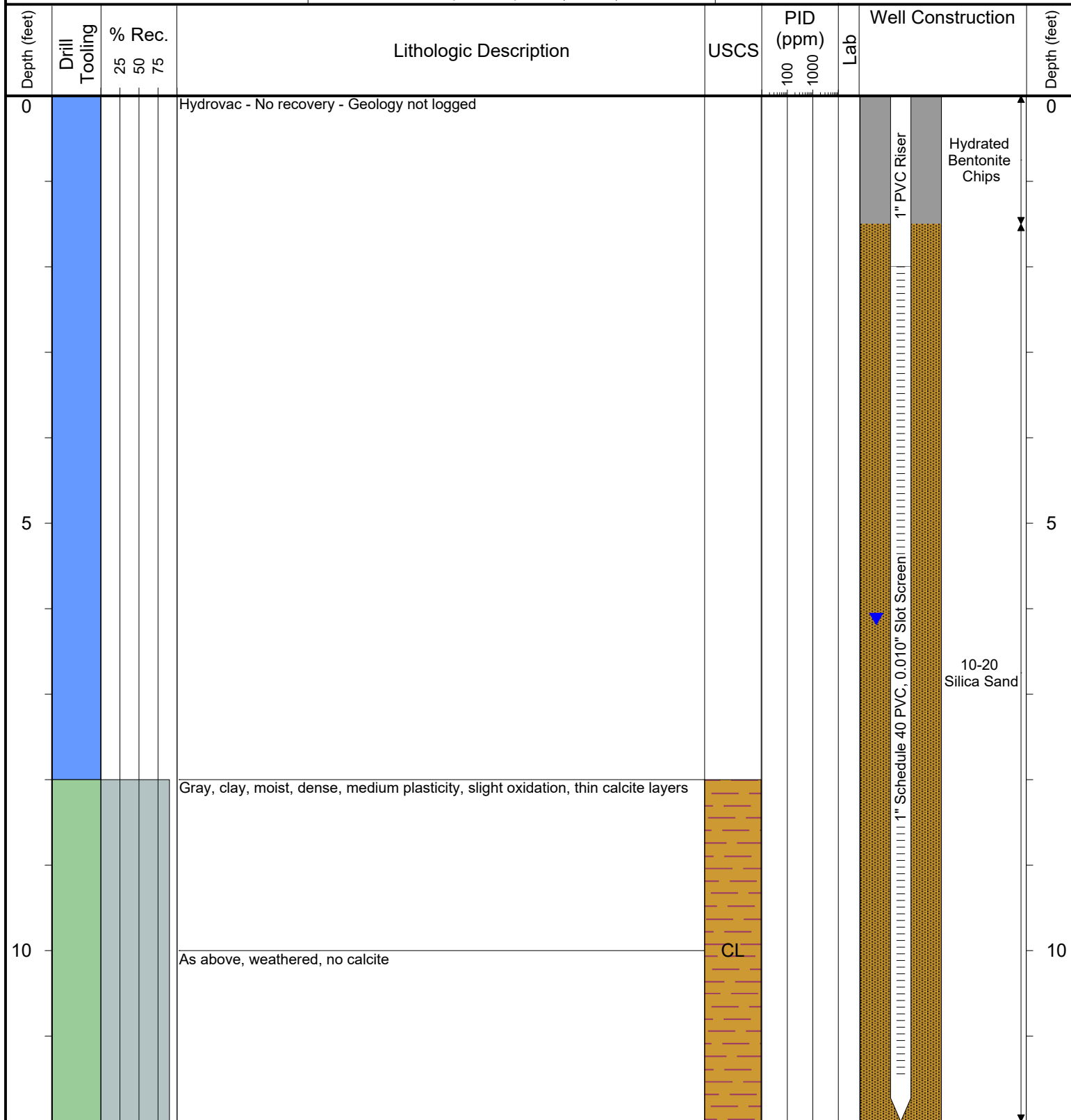
Laboratory Sample Types:

Geotechnical Lab Geotechnical & Analytical Chemistry Lab
 Analytical Chemistry Lab



6899 Pecos Street, Unit C
Denver, Colorado 80221

CLIENT: Kerr-McGee Oil & Gas Onshore LP	CPC 41-10 #1, Champlin 31-10 #3, 32-10 #2, 42-10 #4 Production Facility
LOGGED BY: Brandon LaVasseur	
PROJECT MANAGER: Robert Cornez	BORING / WELL ID: BH18 (Destroyed)
DRILLING CONTRACTOR: Tasman Geosciences, Inc.	
DRILLING EQUIPMENT: AMS Powerprobe 9300-SK	SURFACE COMPLETION: Flush Mount
DRILL BIT SIZE (INCHES): 2.375	LATITUDE (WGS 1984): 40.071245364
DATE STARTED - COMPLETED: 3/1/2019	LONGITUDE (WGS 1984): -104.983168517
TOTAL WELL DEPTH (FT. BGS): 12	CASING ELEVATION (FT. AMSL): 5053.6
DEPTH TO WATER (FT. BGS): 6.12 (3/11/19)	GROUND ELEVATION (FT. AMSL): 5053.79



Drilling / Sample Method:

Macro-Core Hydrovac Solid Stem Auger
Expendable Well Tip Hand Auger

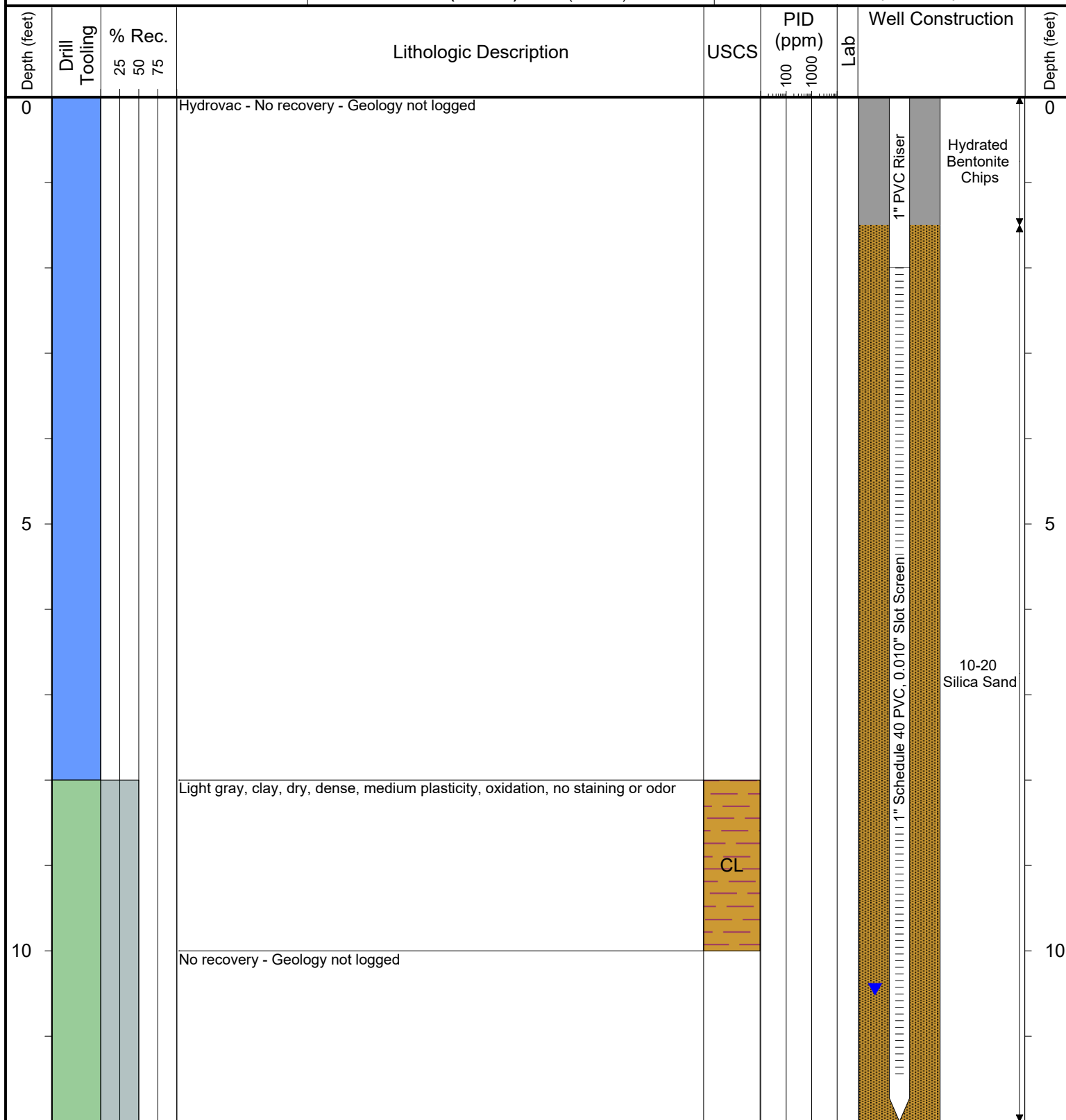
Laboratory Sample Types:

Geotechnical Lab Geotechnical & Analytical Chemistry Lab
Analytical Chemistry Lab



6899 Pecos Street, Unit C
Denver, Colorado 80221

CLIENT: Kerr-McGee Oil & Gas Onshore LP	CPC 41-10 #1, Champlin 31-10 #3, 32-10 #2, 42-10 #4 Production Facility
LOGGED BY: Brandon LaVasseur	
PROJECT MANAGER: Robert Cornez	BORING / WELL ID: BH19
DRILLING CONTRACTOR: Tasman Geosciences, Inc.	
DRILLING EQUIPMENT: AMS Powerprobe 9300-SK	SURFACE COMPLETION: Flush Mount
DRILL BIT SIZE (INCHES): 2.375	LATITUDE (WGS 1984): 40.071325752
DATE STARTED - COMPLETED: 3/1/2019	LONGITUDE (WGS 1984): -104.982668893
TOTAL WELL DEPTH (FT. BGS): 12	CASING ELEVATION (FT. AMSL): 5050.95
DEPTH TO WATER (FT. BGS): 10.45 (3/11/19)	GROUND ELEVATION (FT. AMSL): 5051.19



Drilling / Sample Method:

- Macro-Core

Expendable Well Tip
- Hydrovac

Hand Auger
- Solid Stem Auger

Laboratory Sample Types:

- Geotechnical Lab

Analytical Chemistry Lab
- Geotechnical & Analytical Chemistry Lab