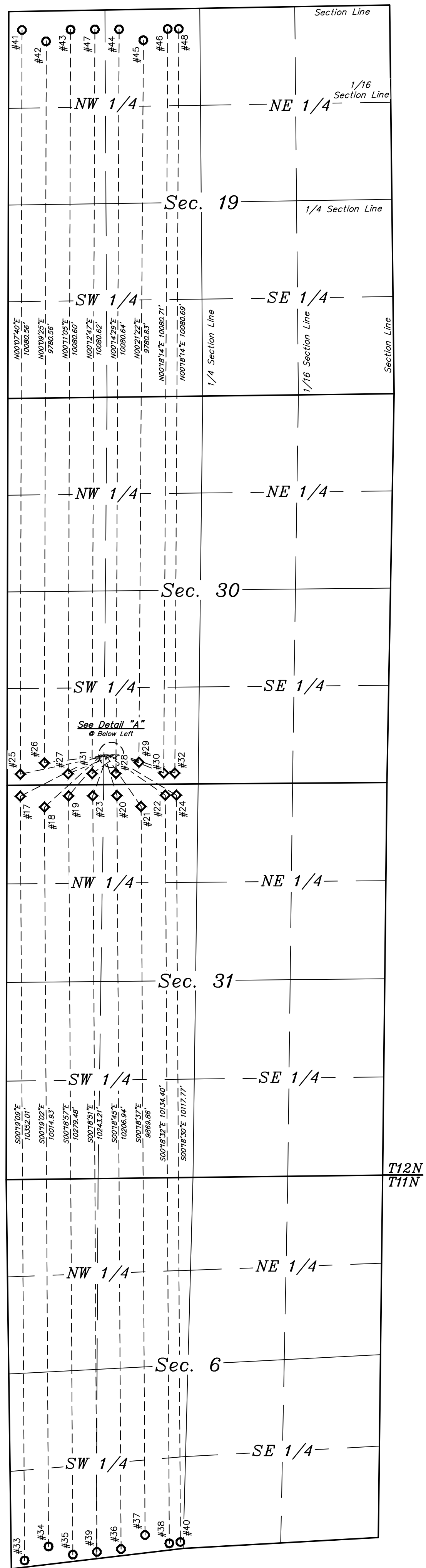




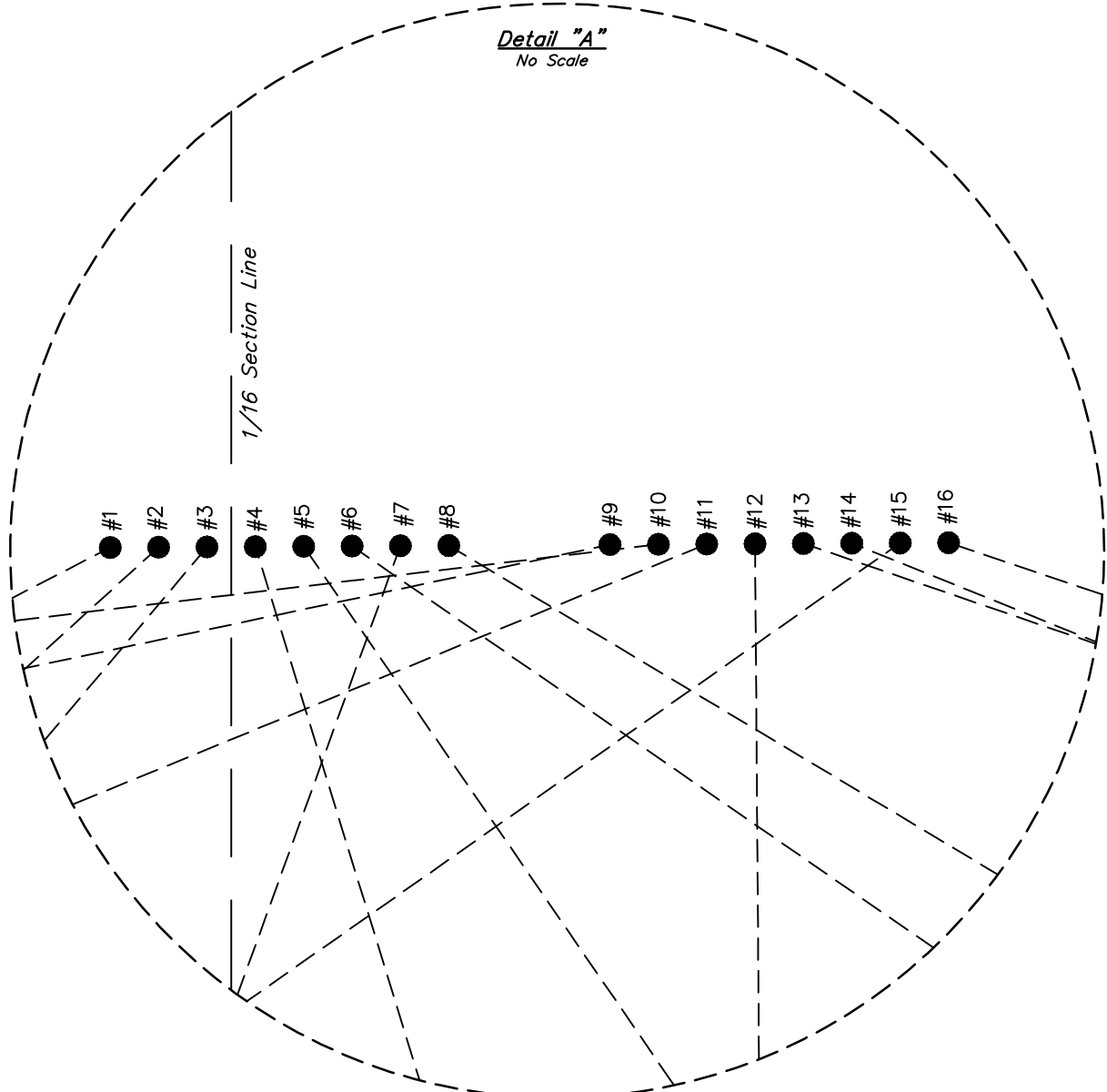
LEGEND	WELL	SHL FOOTAGES	SEC.	TWP.	RNG.
#1	RANDALL CREEK 31-0164B	404' FSL 1272' FWL	30	12N	62W
#2	RANDALL CREEK 31-0164D	404' FSL 1287' FWL	30	12N	62W
#3	RANDALL CREEK 31-0263B	404' FSL 1302' FWL	30	12N	62W
#4	RANDALL CREEK 31-0362B	404' FSL 1317' FWL	30	12N	62W
#5	RANDALL CREEK 31-0362D	404' FSL 1332' FWL	30	12N	62W
#6	RANDALL CREEK 31-0461B	404' FSL 1347' FWL	30	12N	62W
#7	RANDALL CREEK 12-62-31-6-1N	404' FSL 1362' FWL	30	12N	62W
#8	RANDALL CREEK 12-62-31-6-2N	404' FSL 1377' FWL	30	12N	62W
#9	RANDALL CREEK 30-6401B	404' FSL 1427' FWL	30	12N	62W
#10	RANDALL CREEK 30-6401D	404' FSL 1442' FWL	30	12N	62W
#11	RANDALL CREEK 30-6302B	404' FSL 1457' FWL	30	12N	62W
#12	RANDALL CREEK 30-6203B	404' FSL 1472' FWL	30	12N	62W
#13	RANDALL CREEK 30-6203D	404' FSL 1487' FWL	30	12N	62W
#14	RANDALL CREEK 30-6104B	404' FSL 1502' FWL	30	12N	62W
#15	RANDALL CREEK 12-62-30-19-1N	404' FSL 1517' FWL	30	12N	62W
#16	RANDALL CREEK 12-62-30-19-2N	404' FSL 1532' FWL	30	12N	62W

LEGEND	WELL	LP FOOTAGES	SEC.	TWP.	RNG.
#17	RANDALL CREEK 31-0164B	150' FNL 180' FWL	31	12N	62W
#18	RANDALL CREEK 31-0164D	300' FNL 507' FWL	31	12N	62W
#19	RANDALL CREEK 31-0263B	150' FNL 834' FWL	31	12N	62W
#20	RANDALL CREEK 31-0362B	150' FNL 1488' FWL	31	12N	62W
#21	RANDALL CREEK 31-0362D	300' FNL 1815' FWL	31	12N	62W
#22	RANDALL CREEK 31-0461B	150' FNL 2142' FWL	31	12N	62W
#23	RANDALL CREEK 12-62-31-6-1N	150' FNL 1161' FWL	31	12N	62W
#24	RANDALL CREEK 12-62-31-6-2N	150' FNL 2292' FWL	31	12N	62W
#25	RANDALL CREEK 30-6401B	150' FSL 180' FWL	30	12N	62W
#26	RANDALL CREEK 30-6401D	300' FSL 504' FWL	30	12N	62W
#27	RANDALL CREEK 30-6302B	150' FSL 827' FWL	30	12N	62W
#28	RANDALL CREEK 30-6203B	150' FSL 1474' FWL	30	12N	62W
#29	RANDALL CREEK 30-6203D	300' FSL 1784' FWL	30	12N	62W
#30	RANDALL CREEK 30-6104B	150' FSL 2121' FWL	30	12N	62W
#31	RANDALL CREEK 12-62-30-19-1N	150' FSL 1151' FWL	30	12N	62W
#32	RANDALL CREEK 12-62-30-19-2N	150' FSL 2271' FWL	30	12N	62W

LEGEND	WELL	BHL FOOTAGES	SEC.	TWP.	RNG.
#33	RANDALL CREEK 31-0164B	90' FSL 180' FWL	6	11N	62W
#34	RANDALL CREEK 31-0164D	240' FSL 507' FWL	6	11N	62W
#35	RANDALL CREEK 31-0263B	90' FSL 834' FWL	6	11N	62W
#36	RANDALL CREEK 31-0362B	90' FSL 1488' FWL	6	11N	62W
#37	RANDALL CREEK 31-0362D	240' FSL 1815' FWL	6	11N	62W
#38	RANDALL CREEK 31-0461B	90' FSL 2142' FWL	6	11N	62W
#39	RANDALL CREEK 12-62-31-6-1N	90' FSL 1161' FWL	6	11N	62W
#40	RANDALL CREEK 12-62-31-6-2N	90' FSL 2292' FWL	6	11N	62W
#41	RANDALL CREEK 30-6401B	250' FNL 180' FWL	19	12N	62W
#42	RANDALL CREEK 30-6401D	403' FNL 509' FWL	19	12N	62W
#43	RANDALL CREEK 30-6302B	257' FNL 837' FWL	19	12N	62W
#44	RANDALL CREEK 30-6203B	263' FNL 1494' FWL	19	12N	62W
#45	RANDALL CREEK 30-6203D	417' FNL 1823' FWL	19	12N	62W
#46	RANDALL CREEK 30-6104B	270' FNL 2151' FWL	19	12N	62W
#47	RANDALL CREEK 12-62-30-19-1N	260' FNL 1166' FWL	19	12N	62W
#48	RANDALL CREEK 12-62-30-19-2N	272' FNL 2302' FWL	19	12N	62W



LINE	DIRECTION	LENGTH
L1	S62°45'55"W	1229.02'
L2	S47°43'28"W	1055.66'
L3	S40°02'29"W	728.63'
L4	S17°06'31"E	578.73'
L5	S34°30'53"E	850.52'
L6	S55°22'19"E	965.25'
L7	S19°57'05"W	591.26'
L8	S59°04'55"E	1065.70'
L9	S78°04'39"W	1274.59'
L10	S83°14'54"W	944.30'
L11	S67°40'28"W	681.14'
L12	S00°26'06"E	254.10'
L13	S71°04'44"E	314.25'
L14	S68°02'36"E	667.35'
L15	S54°57'35"W	447.12'
L16	S71°24'22"E	779.64'



LEGEND:
 ● = PROPOSED WELLHEAD.
 ○ = LANDING POINT.
 ○ = TARGET BOTTOM HOLE.

NOTES:

REV: 1 05-27-20 C.IVIE (WELL NAME CORRECTION)

HIGHPOINT OPERATING CORPORATION

RANDALL CREEK 30 SW PAD
 S 1/2 SW 1/4, SECTION 30, T12N, R62W, 6th P.M.
 WELD COUNTY, COLORADO

SURVEYED BY	CHAD MEIERS	08-17-18	SCALE
DRAWN BY	A.P.	09-11-18	1" = 1000'
MULTI-WELL PLAN			FIGURE #5



UELS, LLC
 Corporate Office * 85 South 200 East
 Vernal, UT 84078 * (435) 789-1017