



Well Services
E - L I N E

**RADIAL CEMENT BOND
GAMMA RAY
CCL**

Company		SRC ENERGY	
Well		CECIL FARMS PC #106-68-1HN	
Field		WATTENBURG	
County		WELD	
State		CO	
Location:		API # : 05-123-35998	
NE/NE		Other Services	
LAT : 40.522838 LONG : -104.813983			
SEC 6 TWP 6N RGE 66W			
Permanent Datum		GL	Elevation
Log Measured From		KB 30'	4870'
Drilling Measured From		KB	Elevation
			K.B. 4900'
			D.F. 4899'
			G.L. 4870'
Date	5-6-2019		
Run Number	ONE		
Depth Driller	11908'		
Depth Logger	1528'		
Bottom Logged Interval	1528'		
Top Log Interval	SURFACE		
Open Hole Size	7.625"		
Type Fluid	FRESH WATER		
Density / Viscosity	1.0		
Max. Recorded Temp.	77		
Estimated Cement Top	180'		
Time Well Ready	NA		
Time Logger on Bottom	NA		
Equipment Number	7770		
Location	GREELEY, CO		
Recorded By	A.STEERMAN		
Witnessed By	R.POOLE		
Borehole Record		Tubing Record	
Run Number	Bit	From	To
		Size	Weight
		From	To
Casing Record	Size	Wgt/Ft	Top
Surface String	13.75"	36#	SURFACE
Prot. String			
Production String	7"	26#	SURFACE
Liner			7621'

<<< Fold Here >>>

All interpretations are opinions based on inferences from electrical or other measurements and we cannot and do not guarantee the accuracy or correctness of any interpretation, and we shall not, except in the case of gross or willful negligence on our part, be liable or responsible for any loss, costs, damages, or expenses incurred or sustained by anyone resulting from any interpretation made by any of our officers, agents or employees. These interpretations are also subject to our general terms and conditions set out in our current Price Schedule.

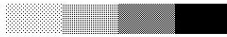

Comments

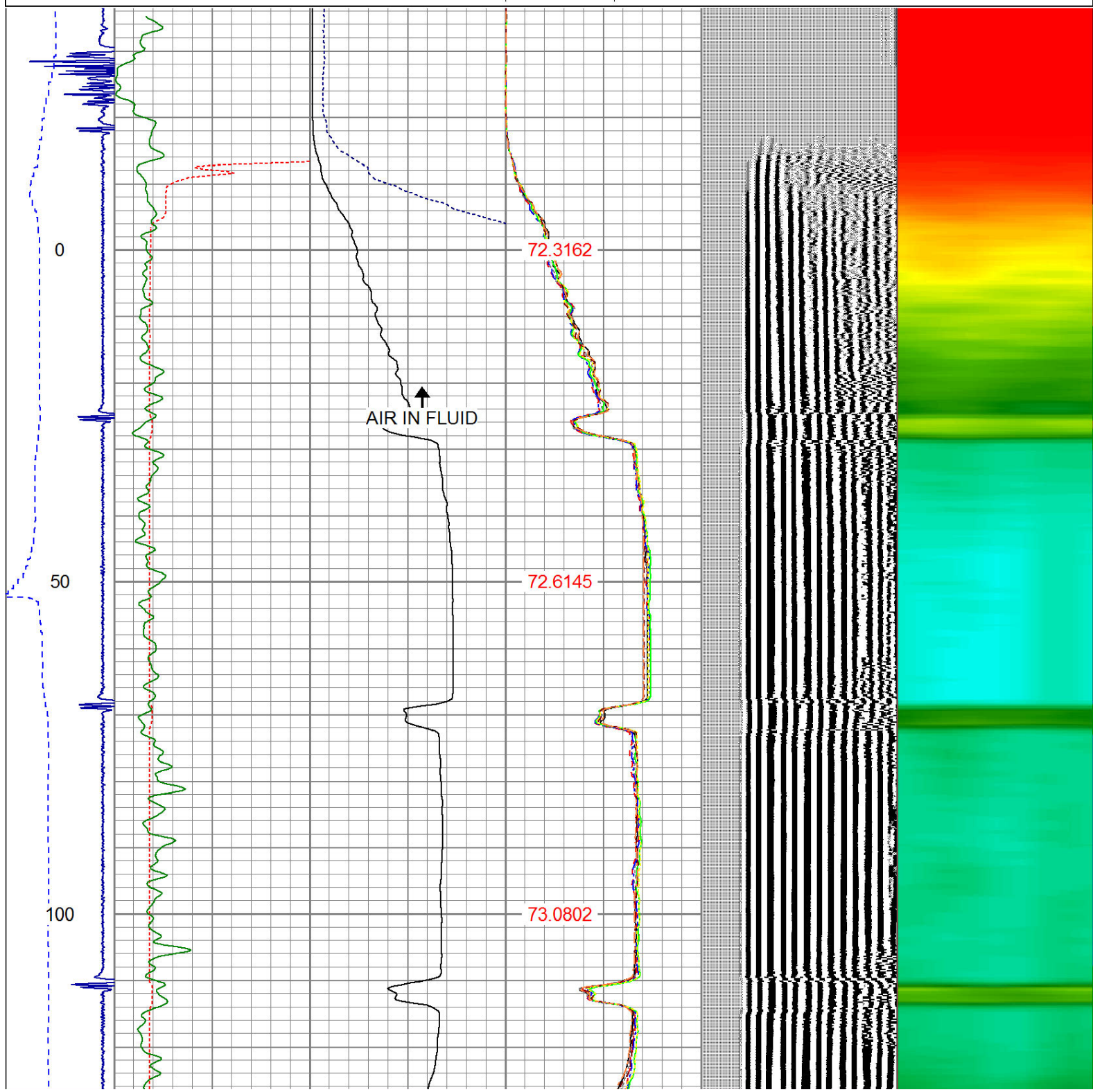
RAN CBL TO VERIFY CEMENT BOND
WELL LOADED BEFORE ARRIVAL

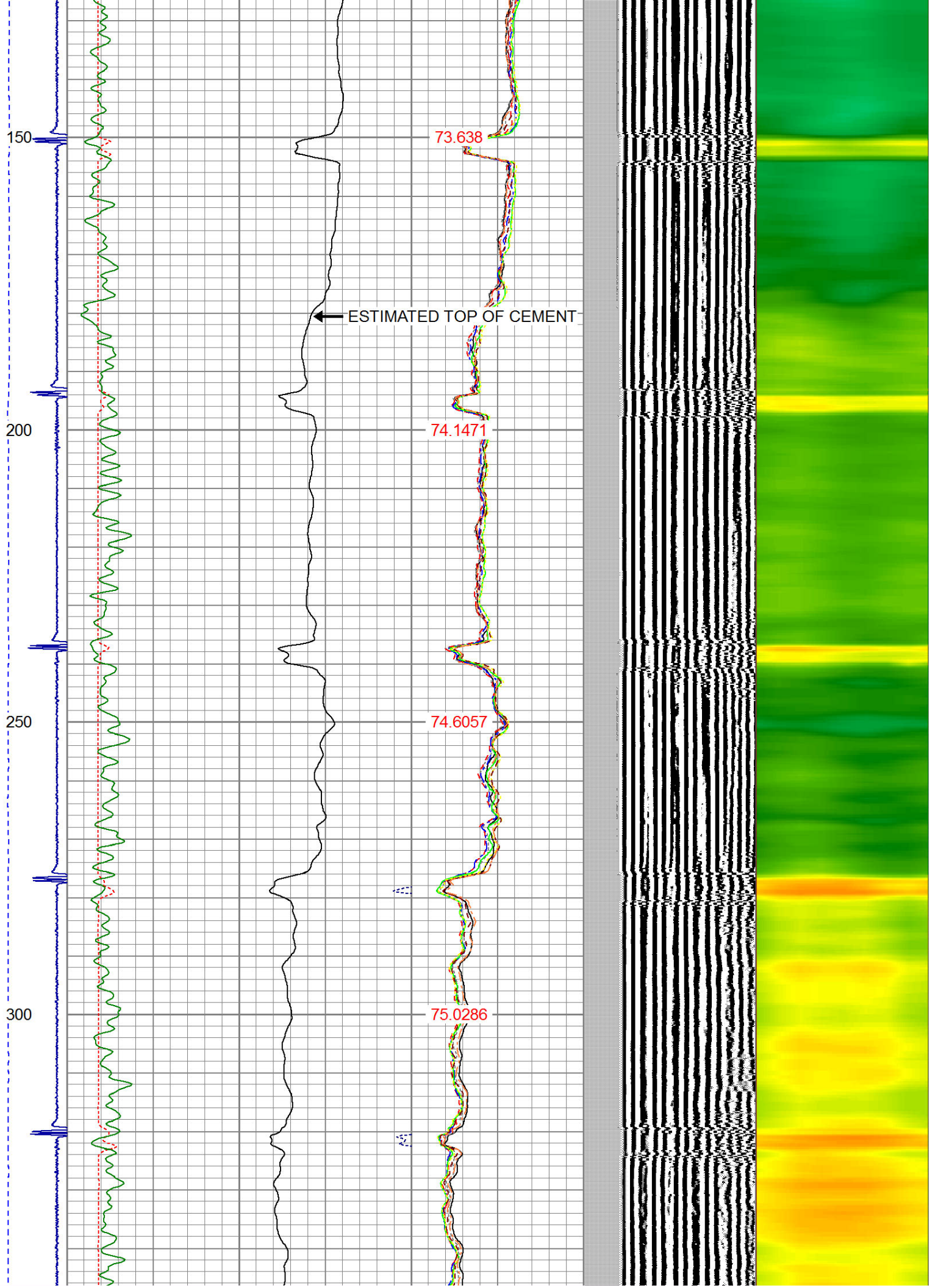
THANK YOU FOR CHOOSING SPN!

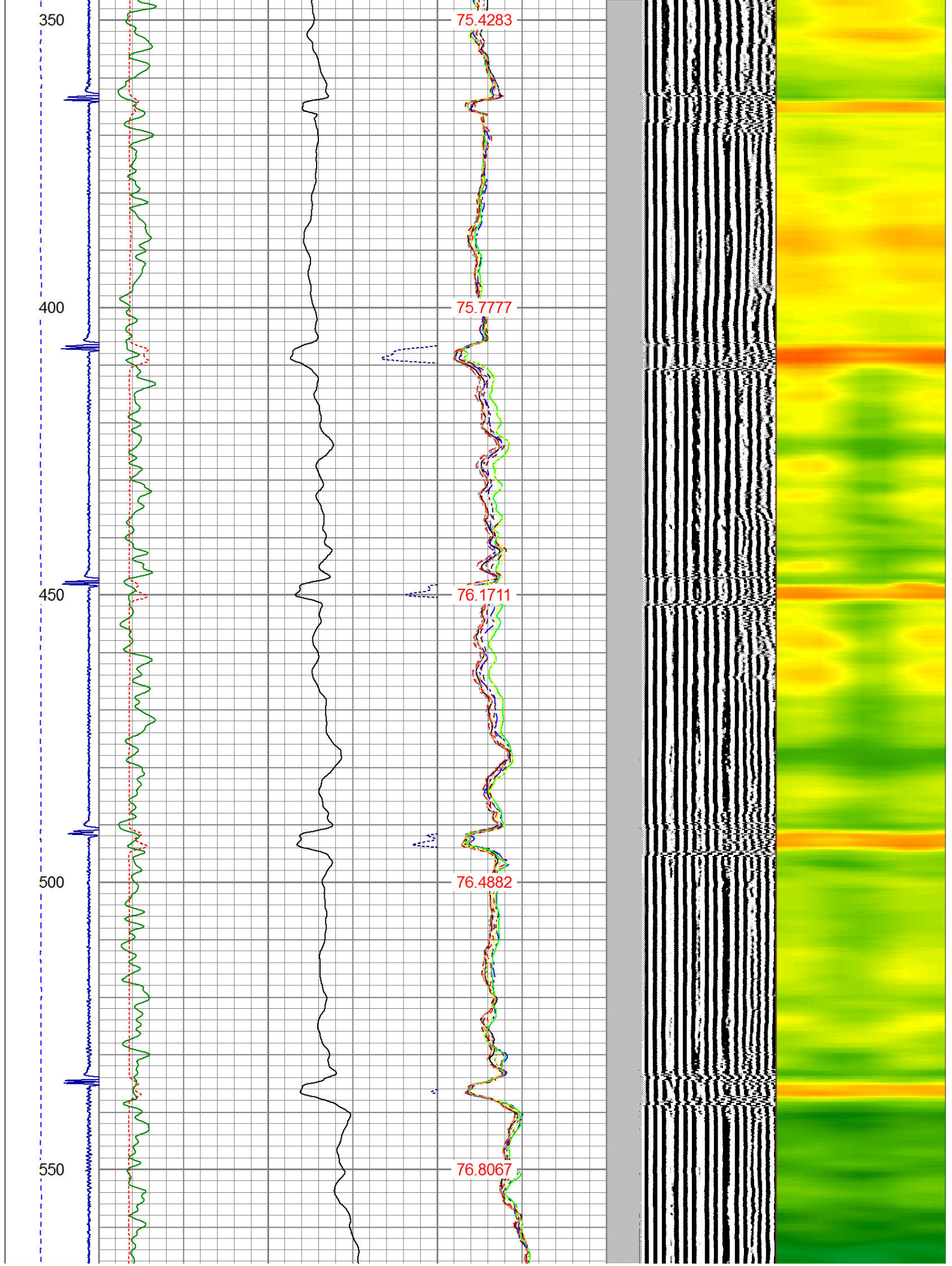
Sensor	Offset (ft)	Schematic	Description	Len (ft)	OD (in)	Wt (lb)
HEADVOLT	15.02					

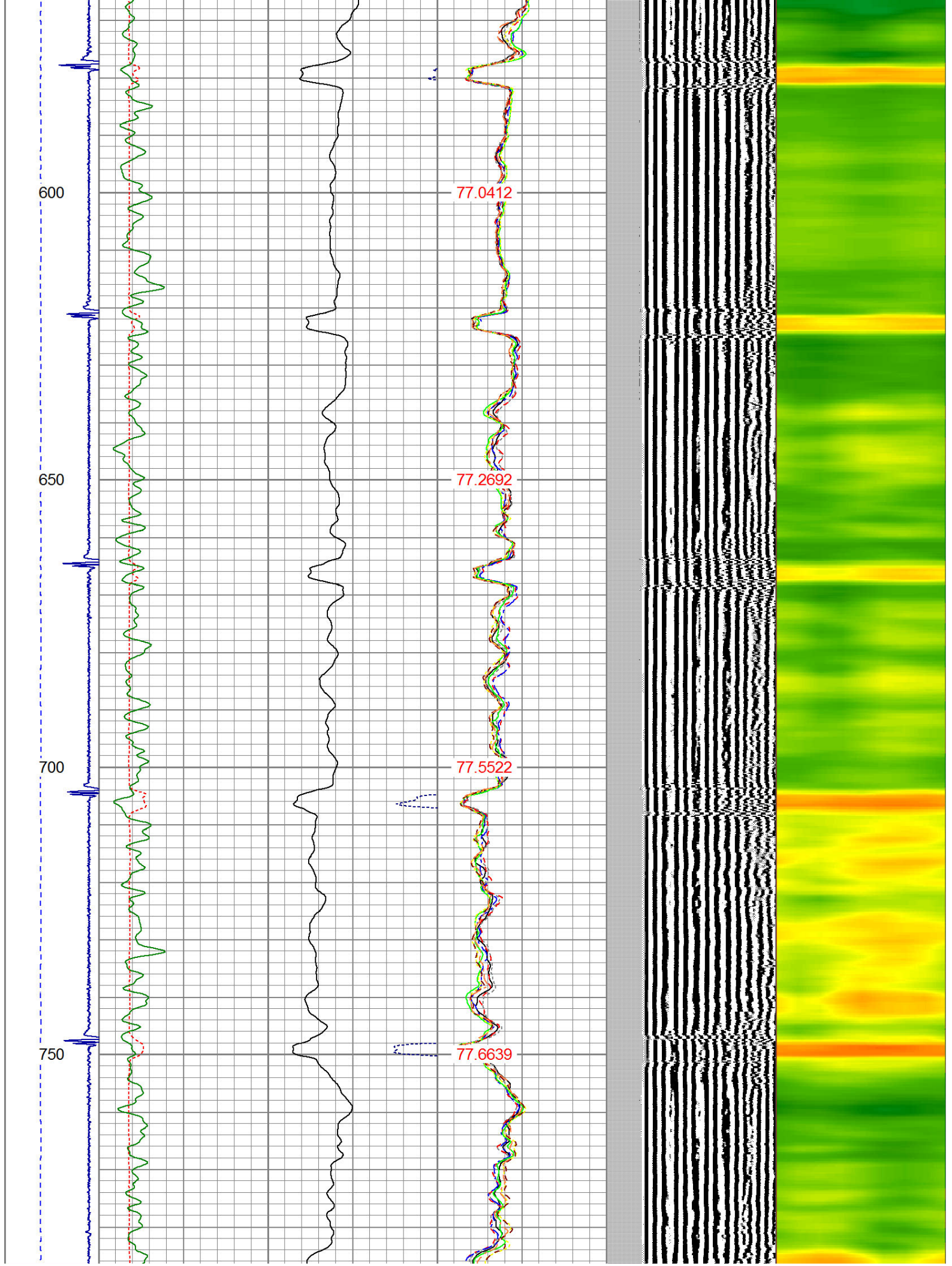
IntTemp	13.60					
WVF3FT	10.35		RBT-Probe (Base) Probe Radii Bond Tool with Digital Telemetry	8.92	2.75	90.00
WVFCAL	10.35					
WVFS1	10.35					
WVFS2	10.35					
WVFS3	10.35					
WVFS4	10.35					
WVFS5	10.35					
WVFS6	10.35					
WVFS7	10.35					
WVFS8	10.35					
WVF5FT	9.35					
CNLSC	6.00					
CNSSC	5.17		CNT-Probe_B (275) 6 bow centralizer	1.77	2.75	40.00
CCL	3.64					
GR	0.90		GR-Probe (275) Probe 2.75"	4.33	2.75	30.00
Dataset: cecil farms pc #i06-68-1hn.db: field/well/run1/pass3 Total Length: 15.02 ft Total Weight: 160.00 lb O.D. 2.75 in						

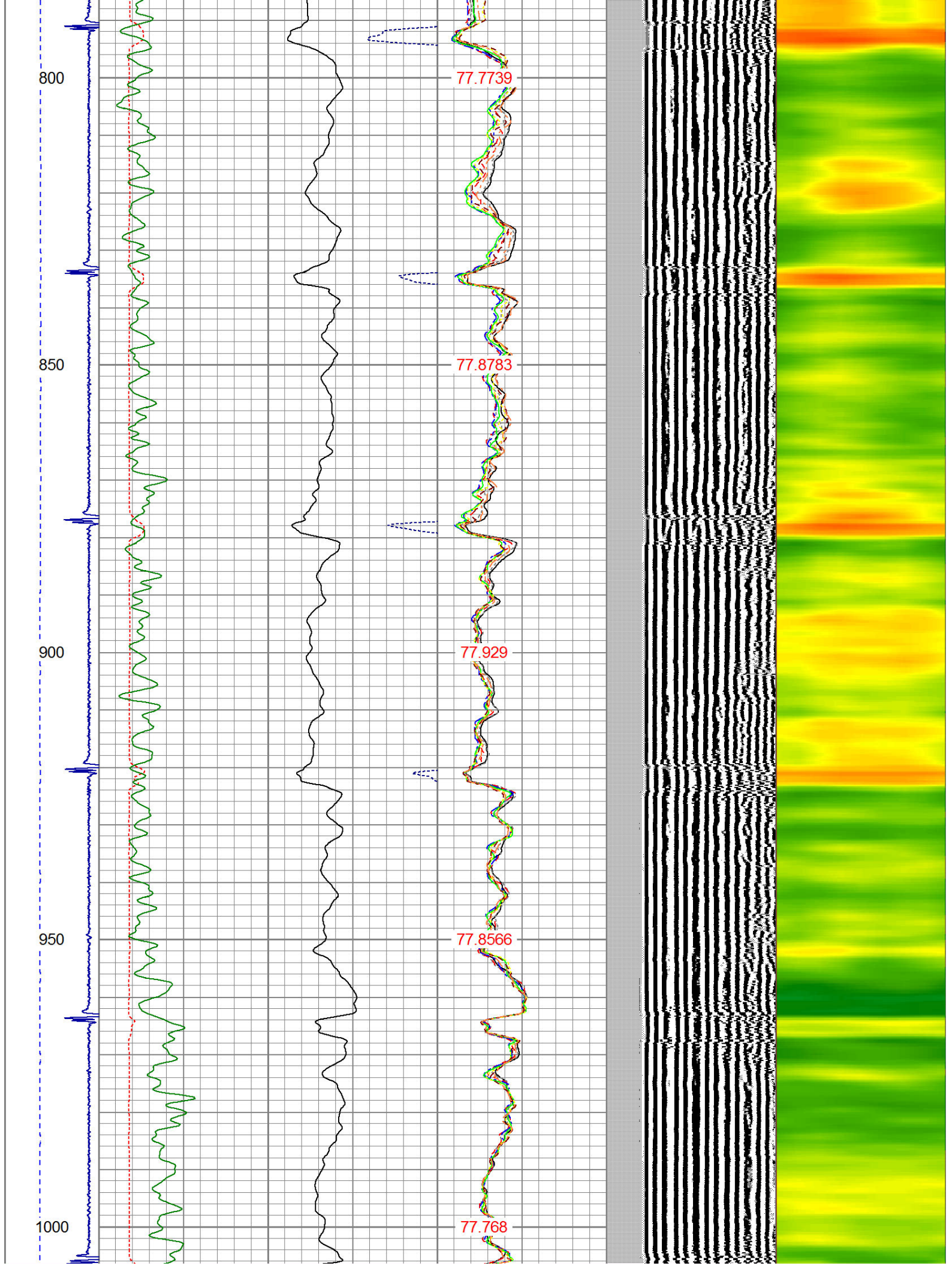
-9	CCL	1	200	TT (usec)	800	0	AMP (mV)	100	0	AMPS1	100	200	VDL	1200	1	Cement Map	8
LSPD (ft/min)	0	250	0	GR (GAPI)	200	0	AMPx5 (mV)	20	0	AMPS2	100		1		1	100	
			200	GR (GAPI)	400					0	AMPS3						100
							0	AMPS4	100	0	AMPS5						100
								0	AMPS6	100							
								0	AMPS7	100							
								0	AMPS8	100							
								IntTemp (degF)									

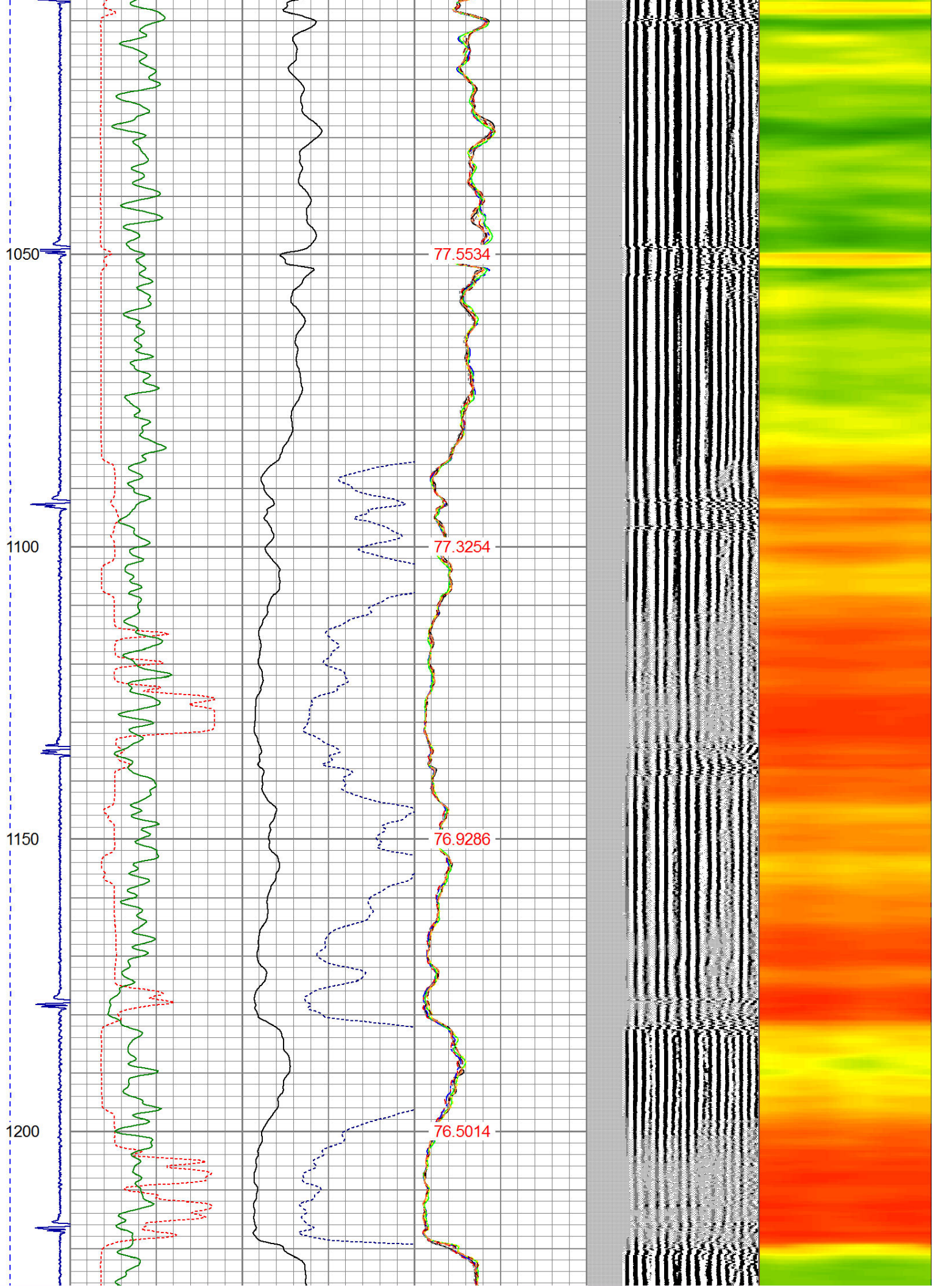


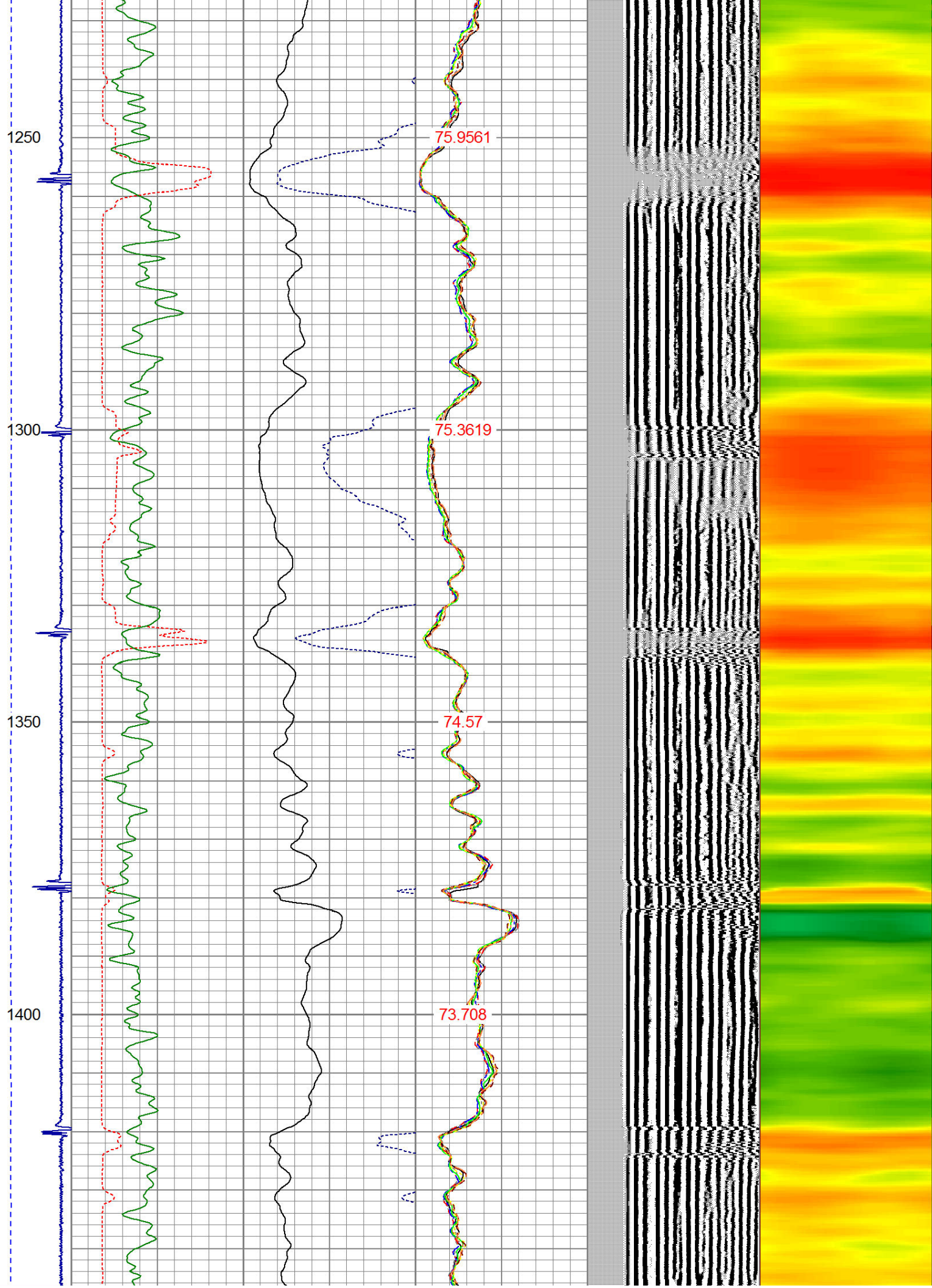


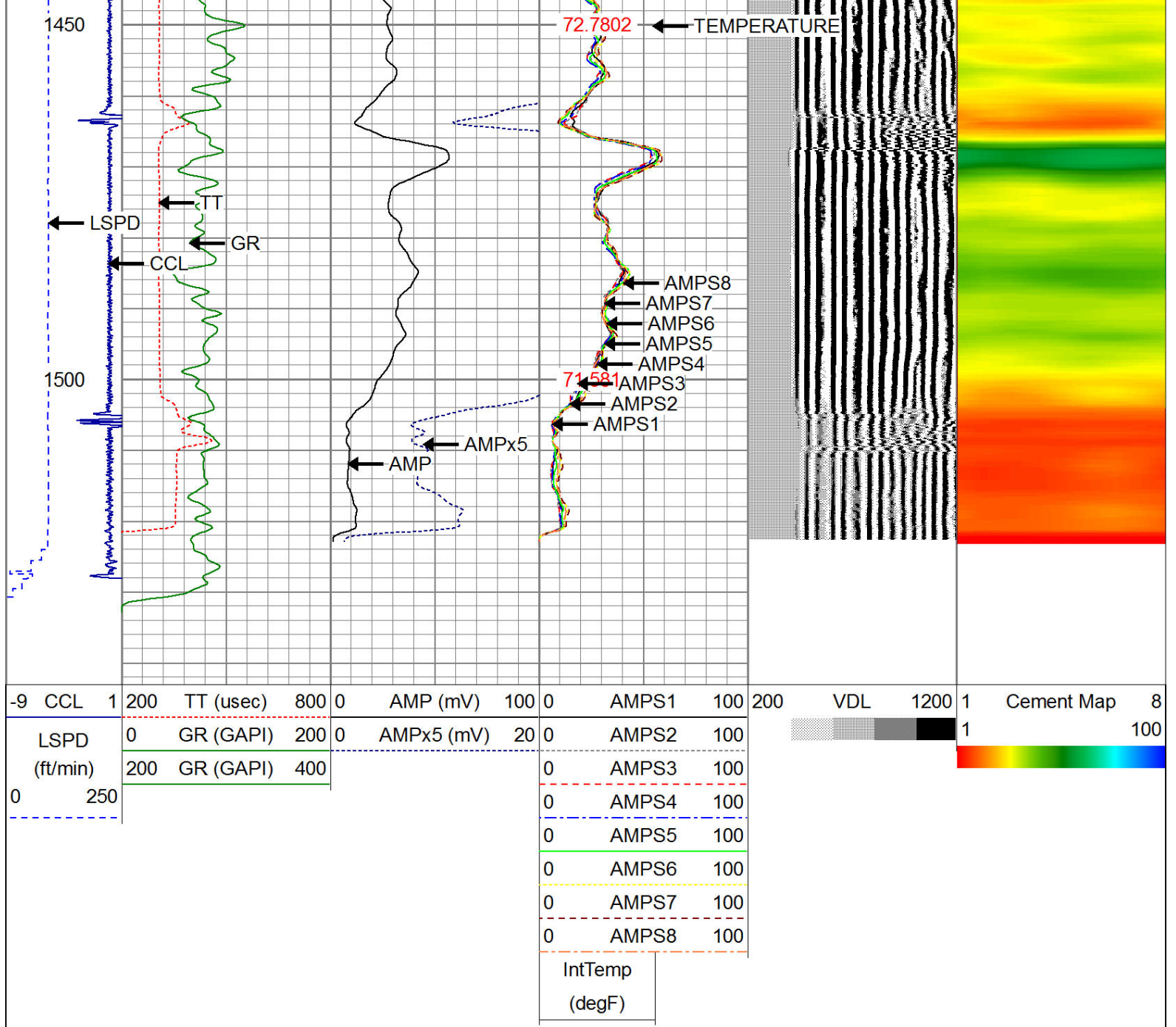












Well Services
E - L I N E

Company SRC ENERGY

Well CECIE FARS PC #106-67HN

Field WATTENBURG

County WELD

State CO