



LWD MEMORY LOG

Gamma Ray

Multiple Propagation Resistivity

[illegible]

(C) 2019 Baker Hughes Company - All rights reserved. Baker Hughes Company and its affiliates ("BHC") provides this information on an "as is" basis for general information purposes and believes it to be accurate as of the date of publication. BHC does not make any representation as to the accuracy or completeness of the information and makes no warranties of any kind, specific, implied or oral, to the fullest extent permissible by law, including those of merchantability and fitness for a particular purpose or use. BHC hereby disclaims any and all liability for any direct, indirect, consequential or special damages, claims for lost profits, or third party claims arising from the use of the information, whether a claim is asserted in contract, tort, or otherwise. The BHC logo is a trademark of Baker Hughes Company.

Log Run Summary

[illegible]

1	1	7.875	PDC	3.00	Steerable	1894.00	17681.00	1894.00	17737.00	2020-03-10 01:26	2020-03-13 16:45	56.84
---	---	-------	-----	------	-----------	---------	----------	---------	----------	------------------	------------------	-------

Crew

Name	Arrive Wellsite	Depart Wellsite	Name	Arrive Wellsite	Depart Wellsite	Name	Arrive Wellsite	Depart Wellsite
Joshua Monroe	2020-03-10	2020-03-13	Matt Yule	2020-03-10	2020-03-13			

Mud Properties Record

Date / Time	Run No.	Depth (ft)	Mud Type	Density (ppg)	Viscosity (cP)	pH	Fluid Loss (cm3)	Oil / Water	Source	Total Chlorides (ppm)	K+ (%)
2020-03-11 16:00	1	6342.00	Synthetic Based Mud	9.3	17	N/A	N/A	77.7/22.3	Active Pit	50095	0.00
2020-03-12 16:00	1	12667.00	Synthetic Based Mud	9.3	17	N/A	N/A	77.5/22.5	Active Pit	51643	0.00

Mud Resistivity Record

Mud Resistivity Record					Surface			Downhole		
Date / Time	Run No.	Depth (ft)	Surface Temp (degF)	Rm (ohm.m)	Rmf (ohm.m)	Rmc (ohm.m)	BHCT (degF)	Rm @ BHCT (ohm.m)	Rmf @ BHCT (ohm.m)	Rmc @ BHCT (ohm.m)
2020-03-10 18:03	1	6500.00	50.0	100.000	N/A	N/A	200.0	100.000	N/A	N/A

Equipment and Service Data

Run No.	Tool	Serial Number	Measurement	Sensor Offset (ft)	Bit Offset (ft)	Max O.D. (in)	Min I.D. (in)
1	EvoOne	G650-0315	Gamma (single)	8.18	56.01	6.500	0.000
1	EvoOne	G650-0315	Directional (mag)	9.37	57.20	6.500	0.000
1	OnTrak	10453201	Pressure	1.07	10985.34	7.000	0.000
1	OnTrak	10453201	Gamma (double)	1.96	10986.23	7.000	0.000
1	OnTrak	10453201	Resistivity (4tx)	6.00	10990.27	7.000	0.000
1	OnTrak	10453201	Directional (mag)	11.79	10996.06	7.000	0.000

Service and Tool Mnemonics

Mnemonic	Name	Description
MWD	EvoOne - Dir Gamma	EvoOne
OTK	OnTrak	Sensor Sub (Inc, Azi, Temp, Azimuthal GR, Res, AP, VSS), OnTrak Platform
BCPM	BCPM	Bi-Directional Communication and Power Module, OnTrak Platform

Comments

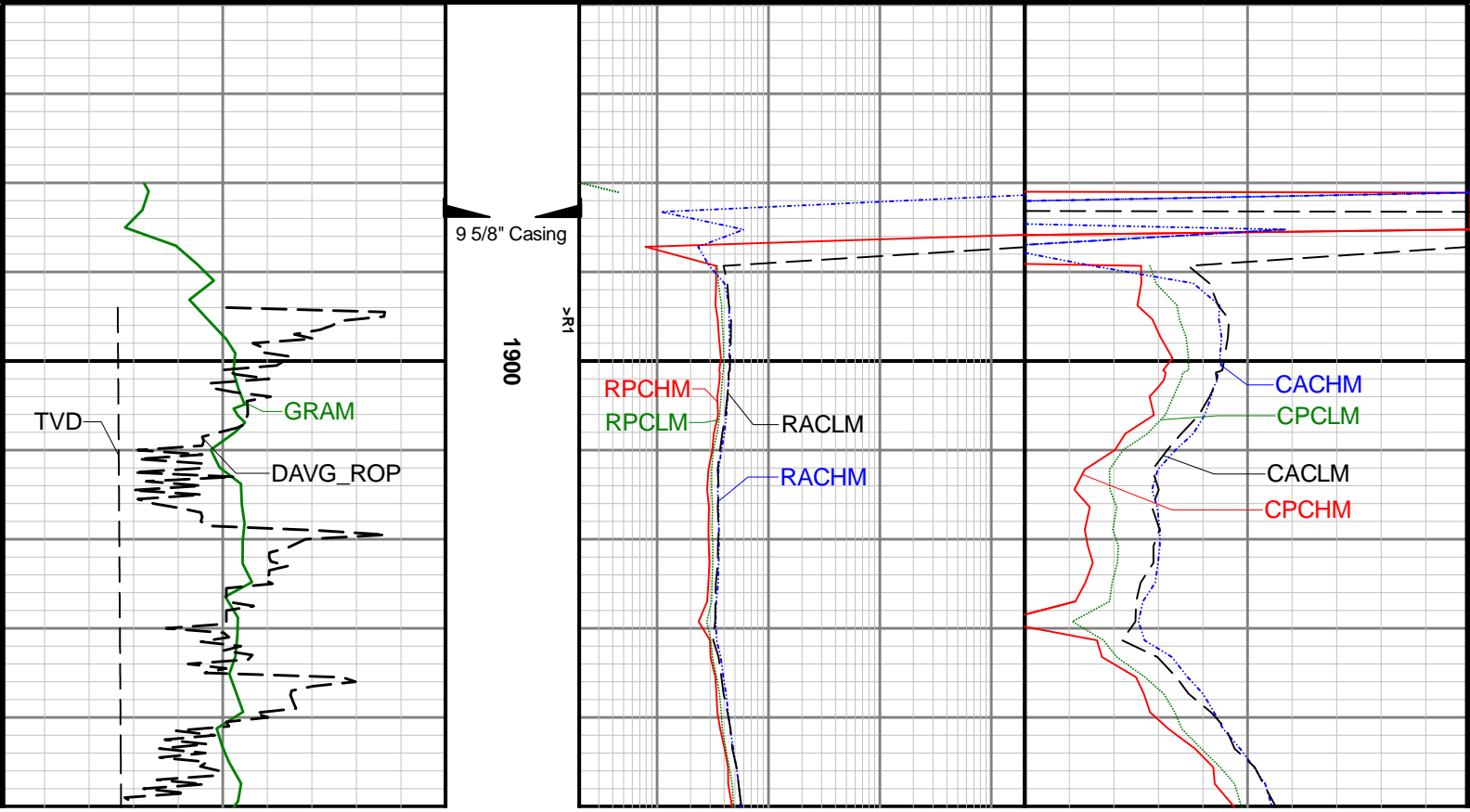
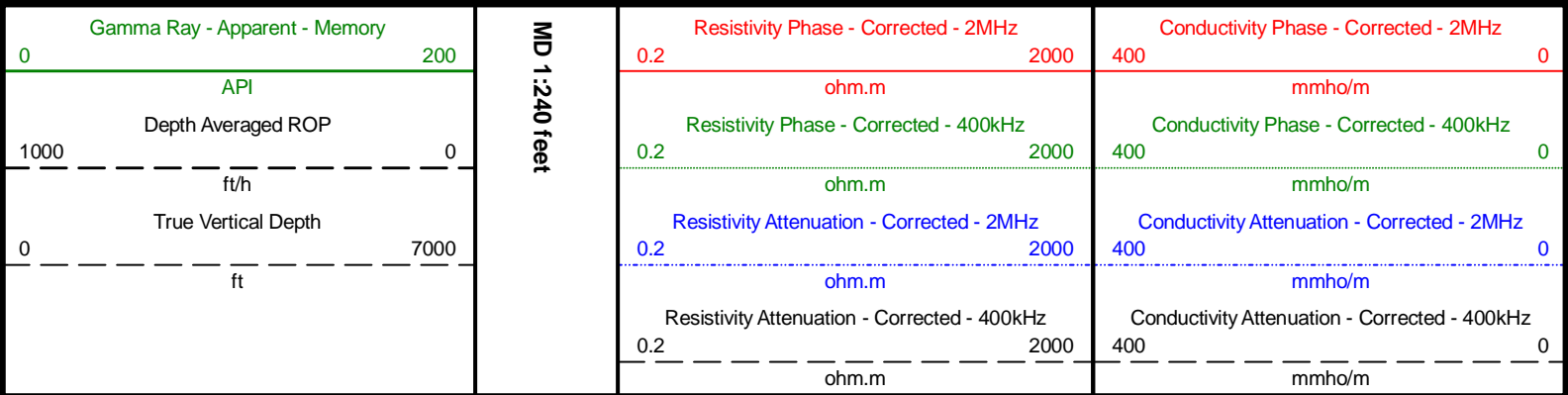
- 1 Depth measurements were obtained from a depth control system not supplied or operated by Baker Hughes. Due to the lack of control by Baker Hughes logging engineers, depth calibrations and measurements could not be independently verified.
- 2 Baker Hughes run 1 utilized 7 inch Ontrak services (Resistivity) behind a 7 7/8 inch bit and steerable assembly from 1894 to 6746 feet MD (1850 to 6535 feet TVD). The Ontrak was run 10984 feet MD behind the bit and resistivity was logged up to 40 hours after drilling formation.
- 3 Gamma Ray (GRAX) scale is presented 0 to 200 API per customer request.

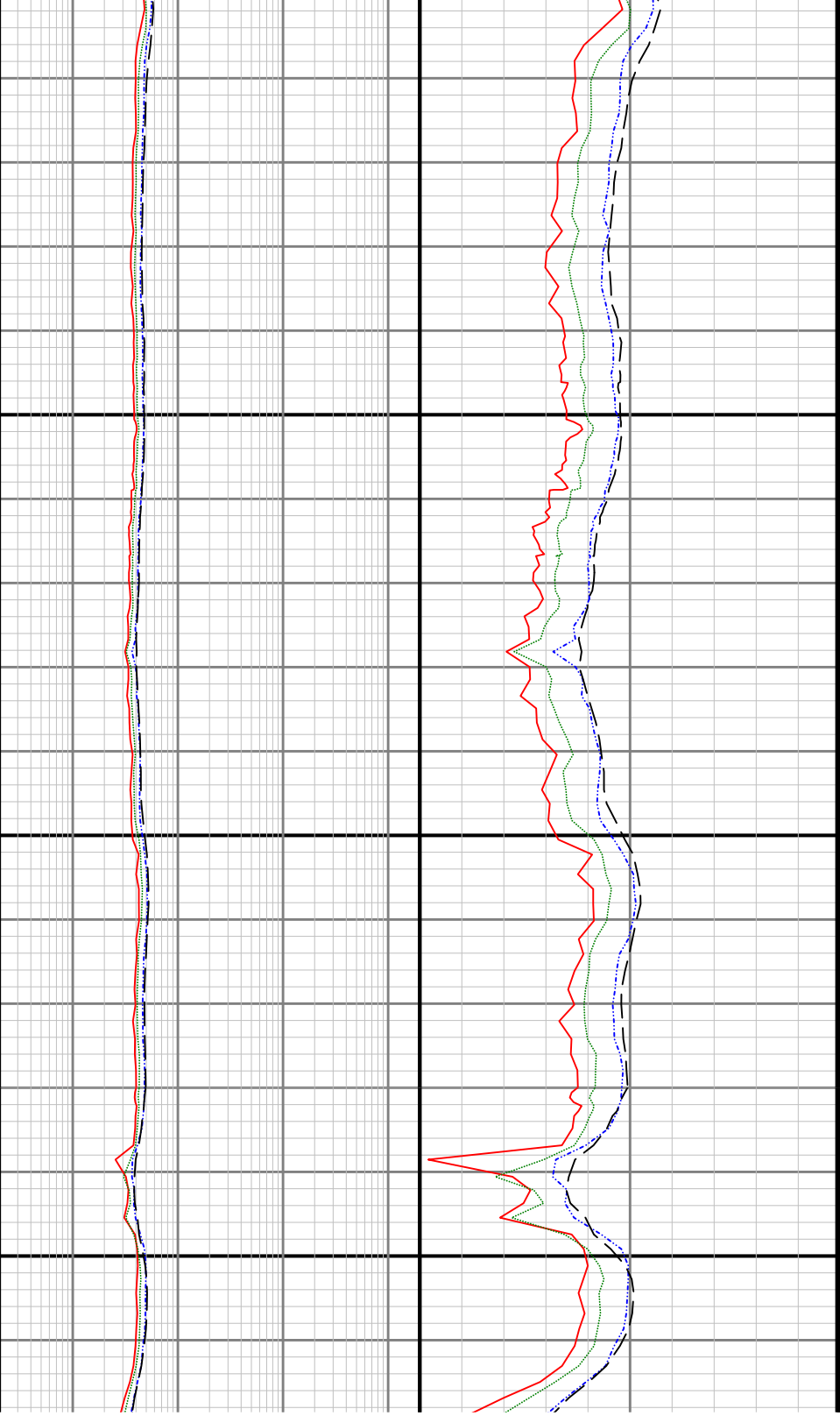
Curve Mnemonics

Presented Curves	Description	Units
CACHM	Conductivity Attenuation - Corrected - 2MHz	mmho/m
CACLM	Conductivity Attenuation - Corrected - 400kHz	mmho/m
CPCHM	Conductivity Phase - Corrected - 2MHz	mmho/m
CPCLM	Conductivity Phase - Corrected - 400kHz	mmho/m
RACHM	Resistivity Attenuation - Corrected - 2MHz	ohm.m
RACLM	Resistivity Attenuation - Corrected - 400kHz	ohm.m
RPCHM	Resistivity Phase - Corrected - 2MHz	ohm.m
RPCLM	Resistivity Phase - Corrected - 400kHz	ohm.m

RPTHM	Resistivity Phase - Corrected - 400kHz	min
DAVG_ROP	Depth Averaged ROP	ft/h
TVD	True Vertical Depth	ft
GRAM	Gamma Ray - Apparent - Memory	API

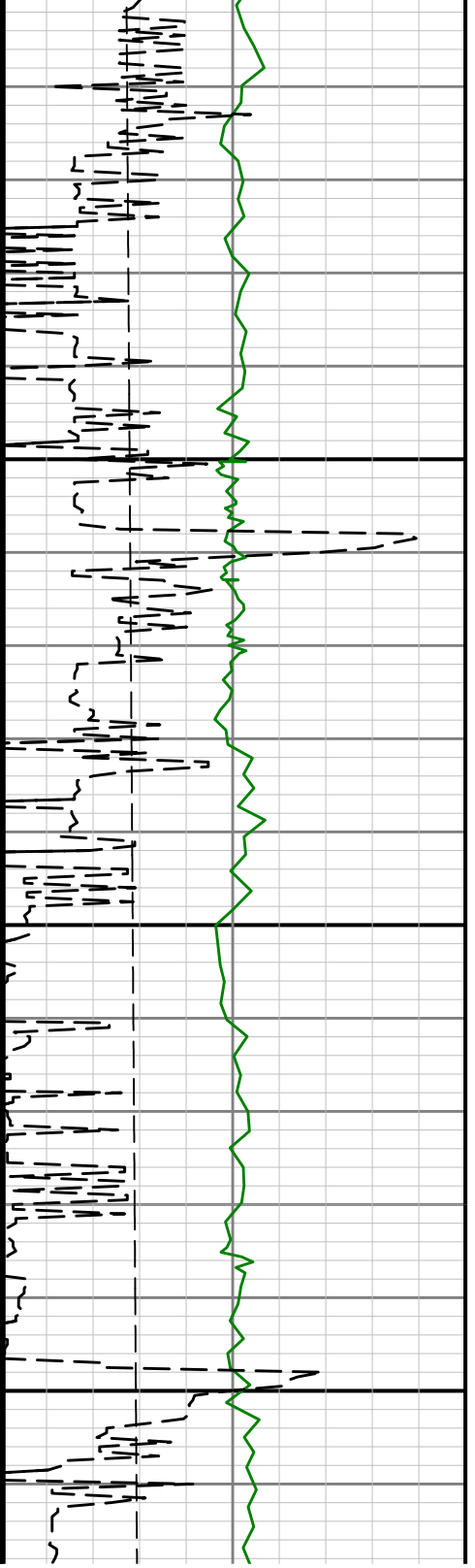
<div> <div> <div>Baker Hughes</div> </div> <div> <div>Company</div> <div>Well</div> <div>Interval</div> <div>Created</div> </div> <div> <div>Anadarko</div> <div>Damore 18-2HZ</div> <div>Date From: 2020-03-10 01:26</div> <div>Date To: 2020-03-13 16:45</div> <div>2020-03-14 07:08:50</div> </div> </div>	Interval Drilled: (ft) 1894.00 - 17737.00			
	Interval Logged: (ft) 1894.00 - 6746.00			

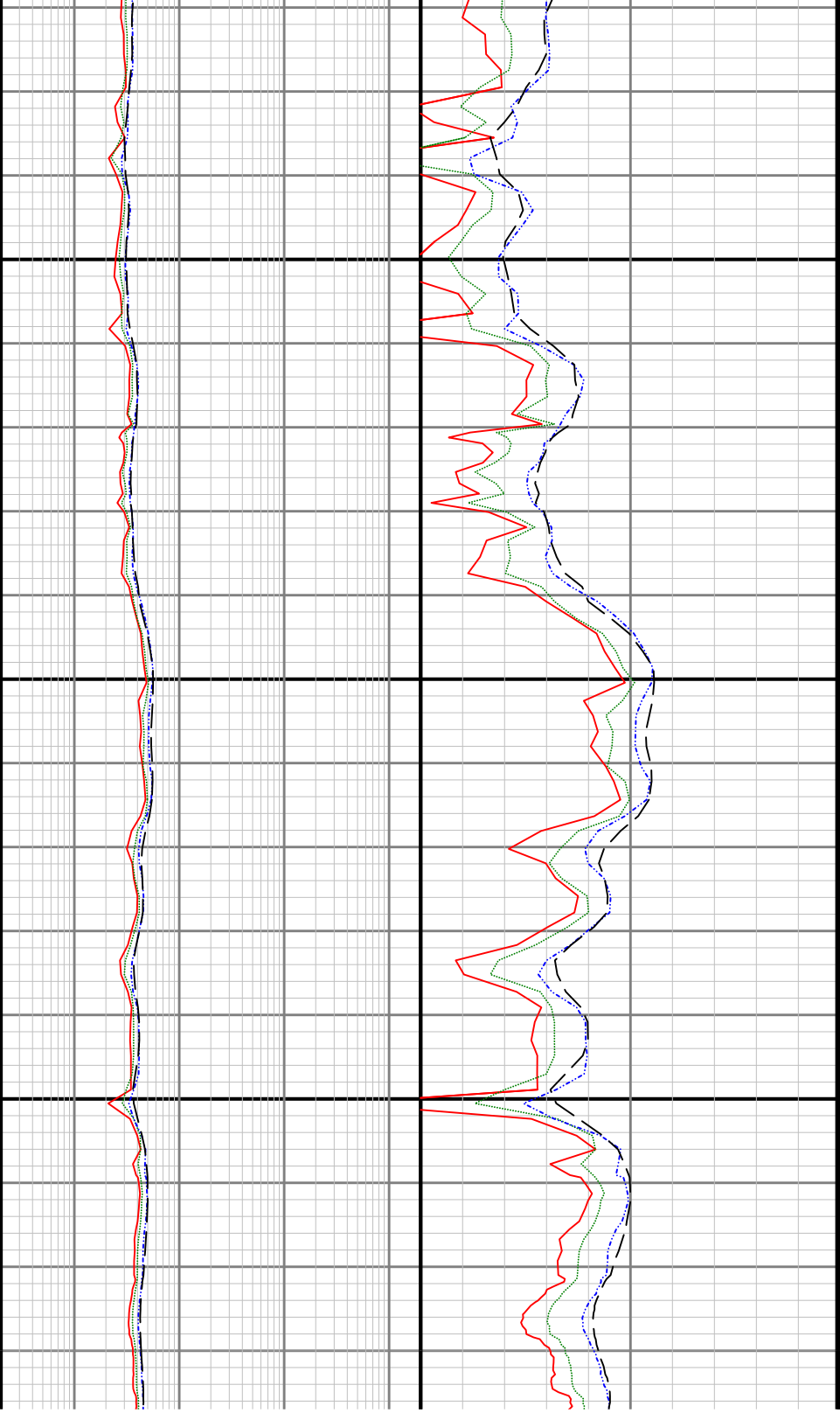




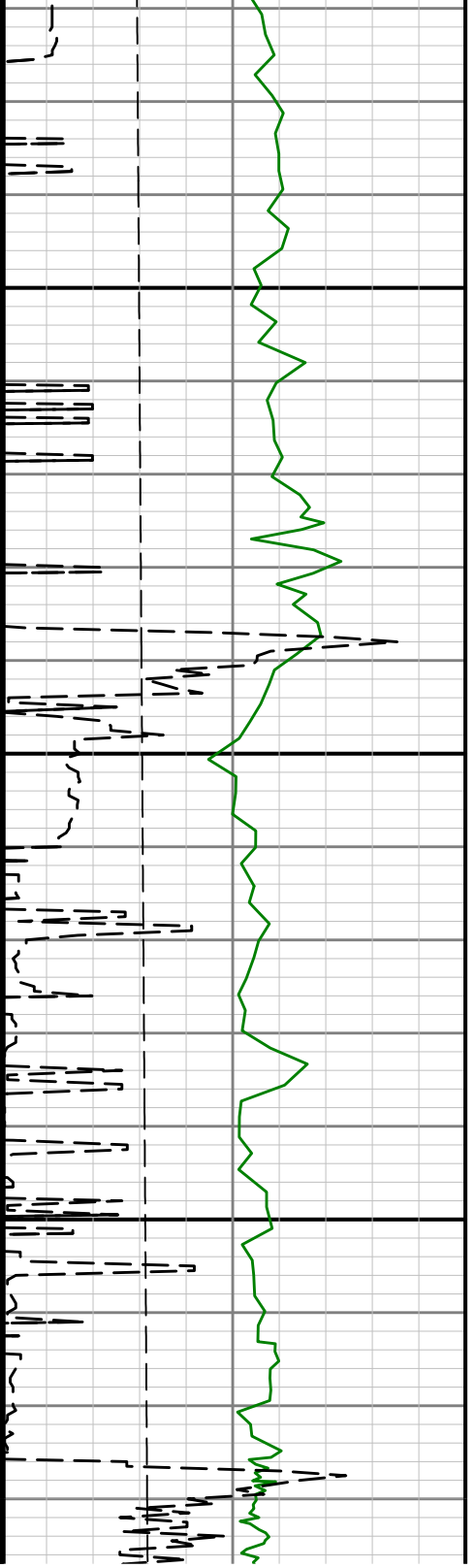
2000

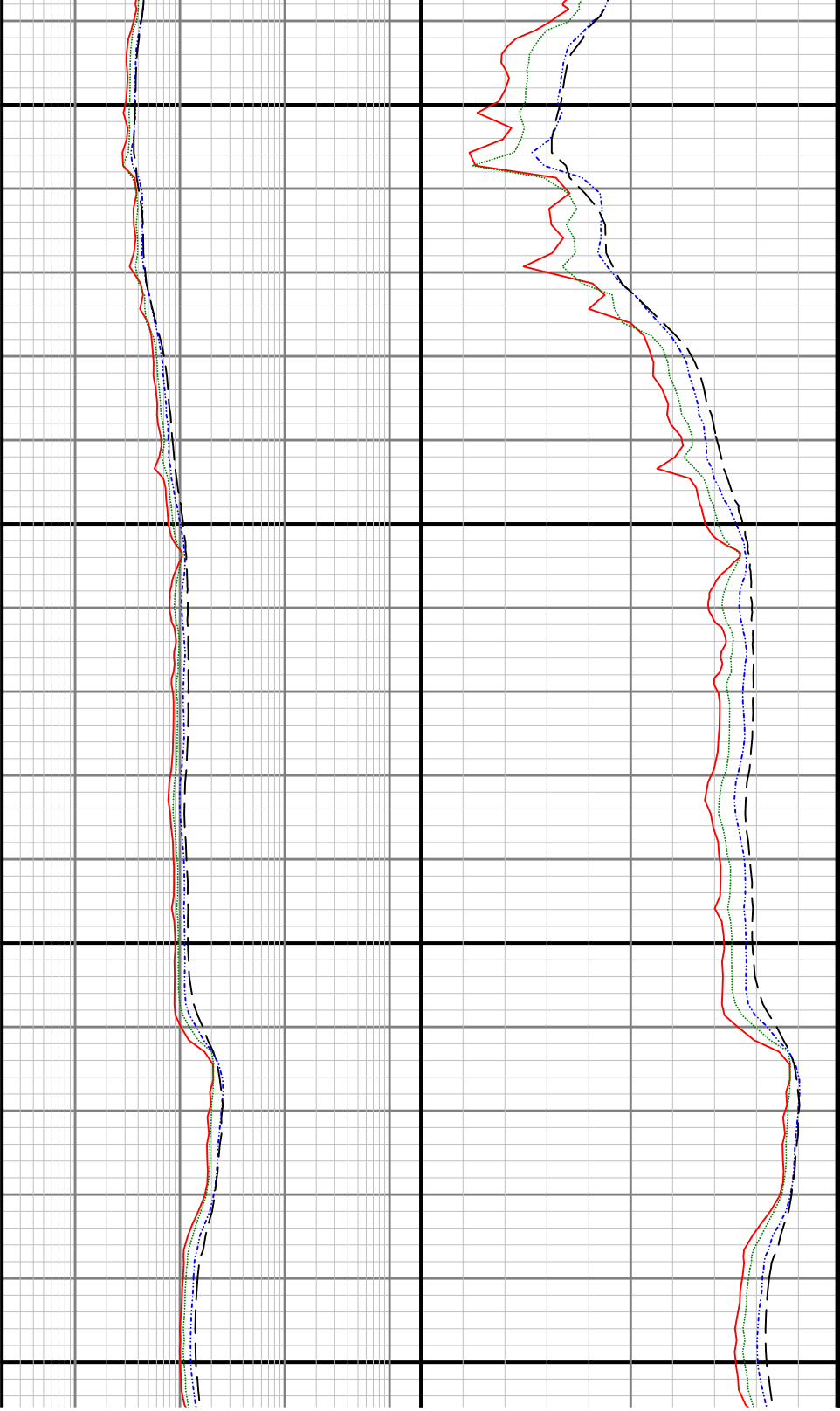
2100





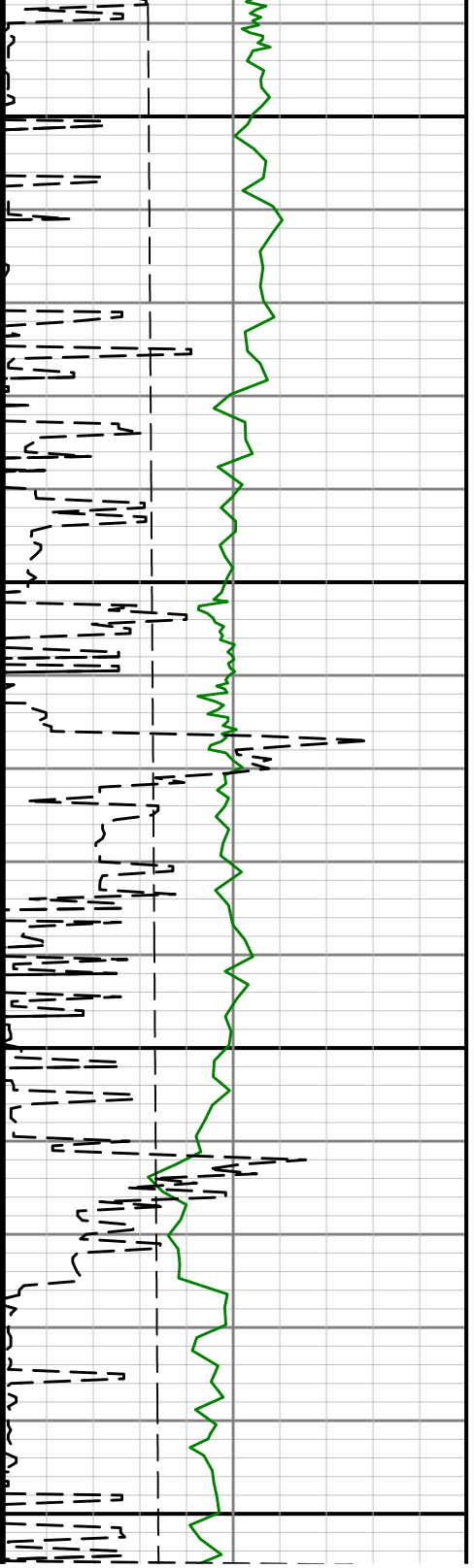
2200

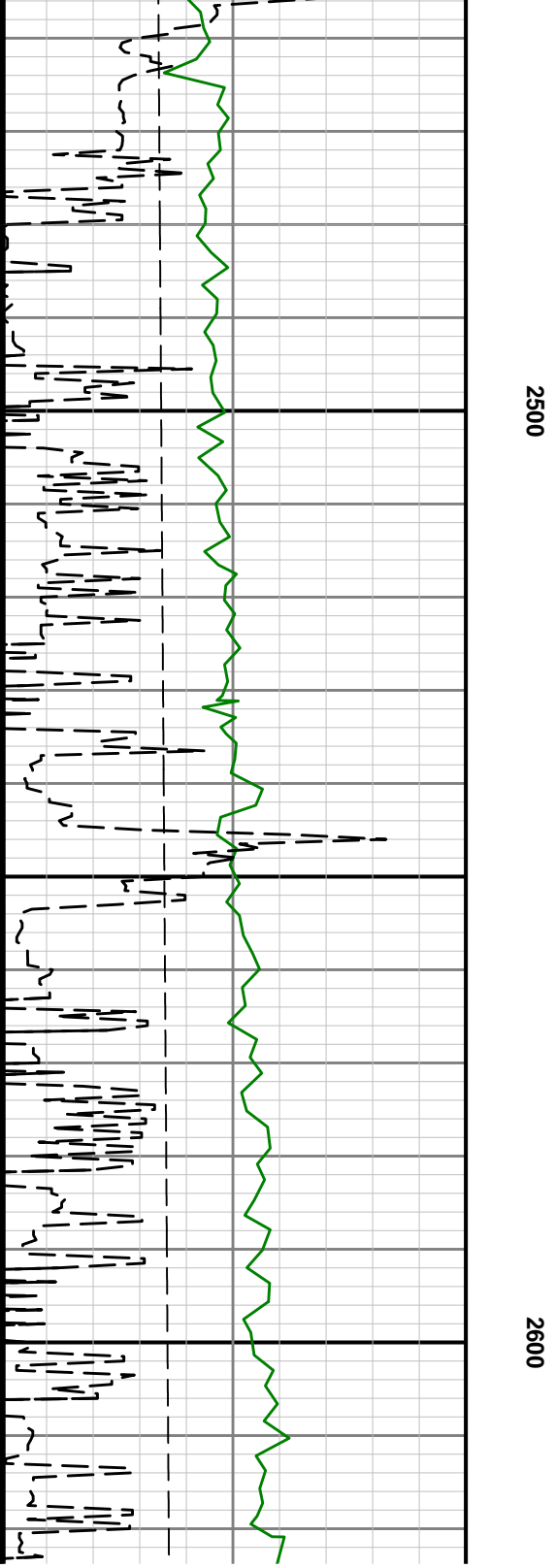
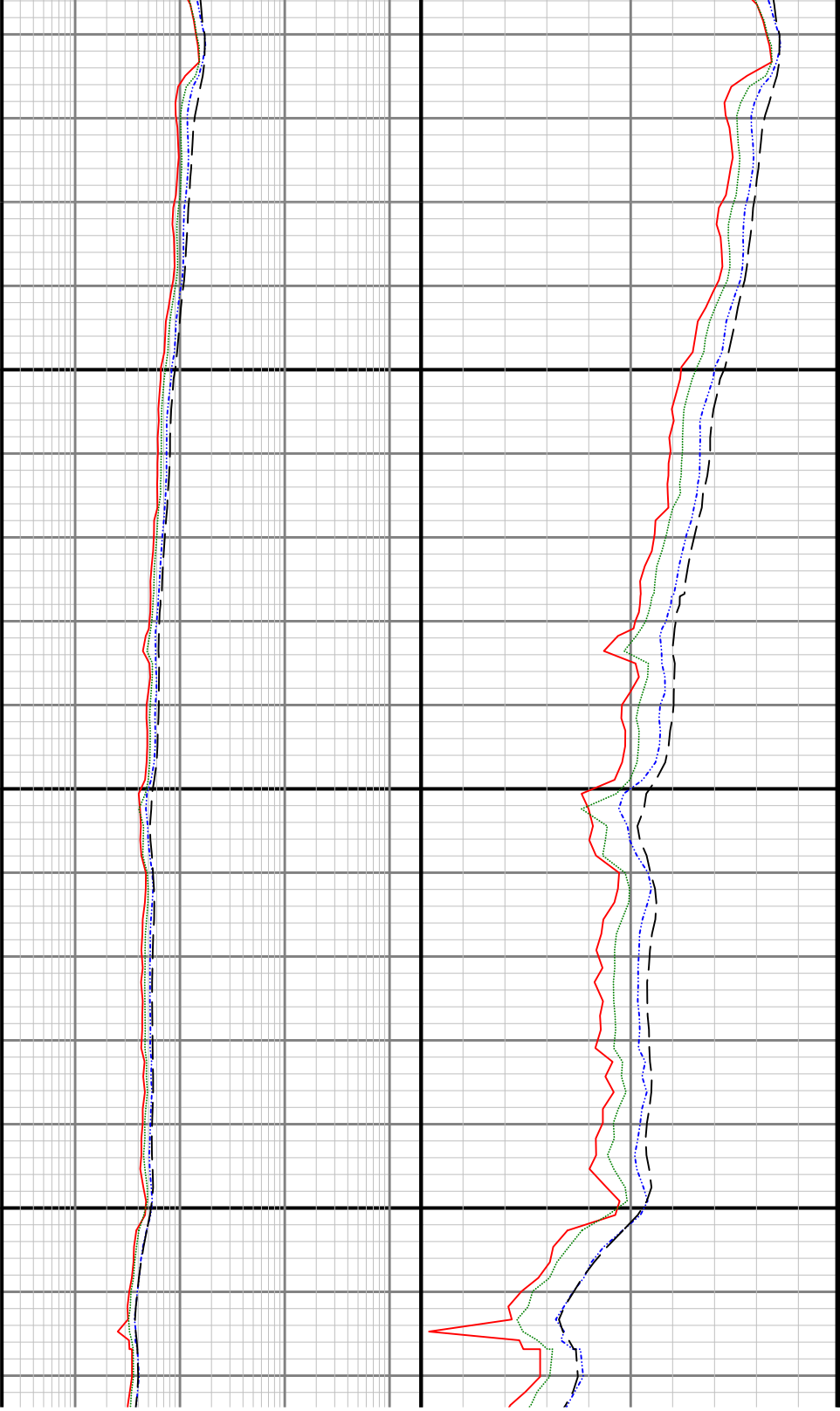


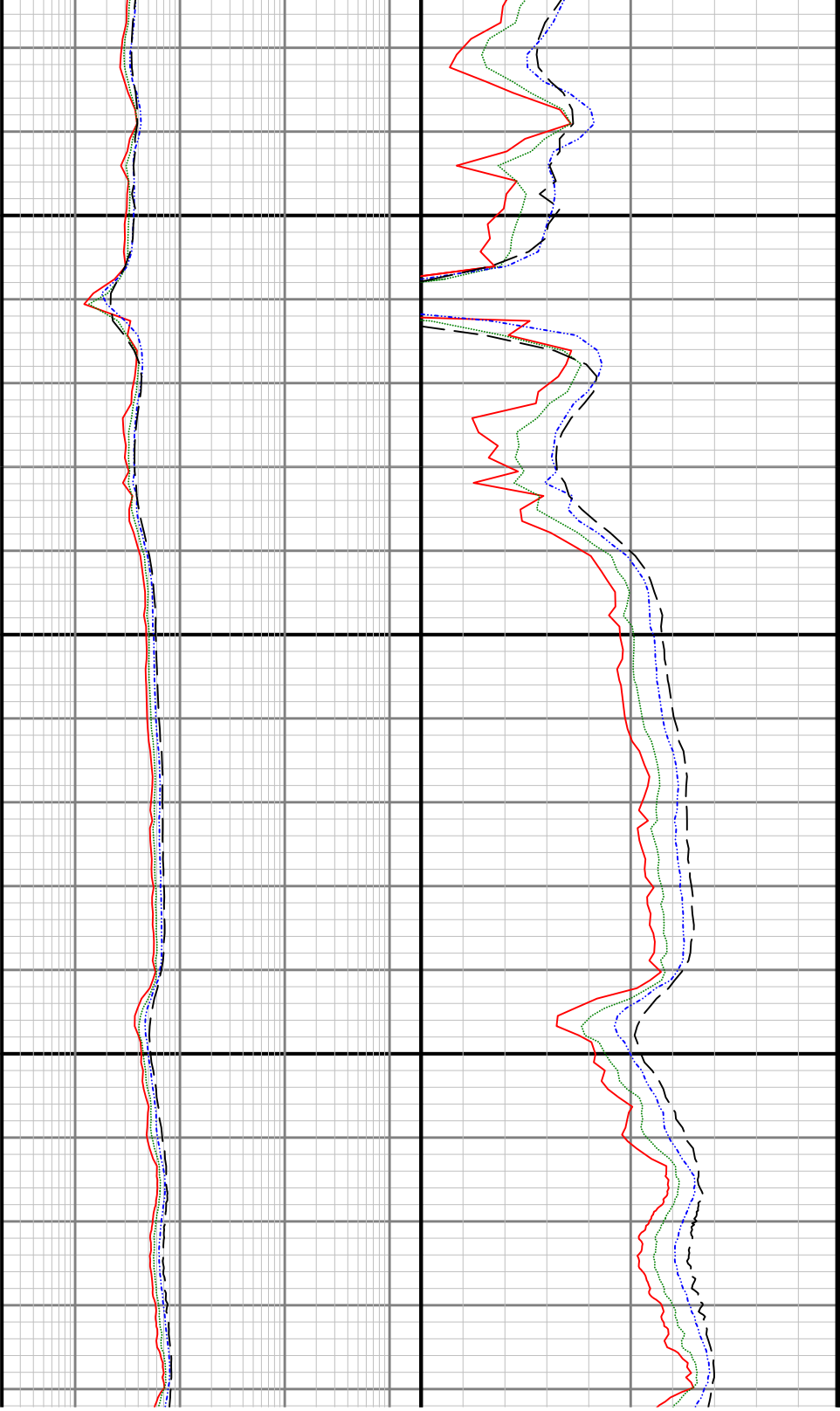


2300

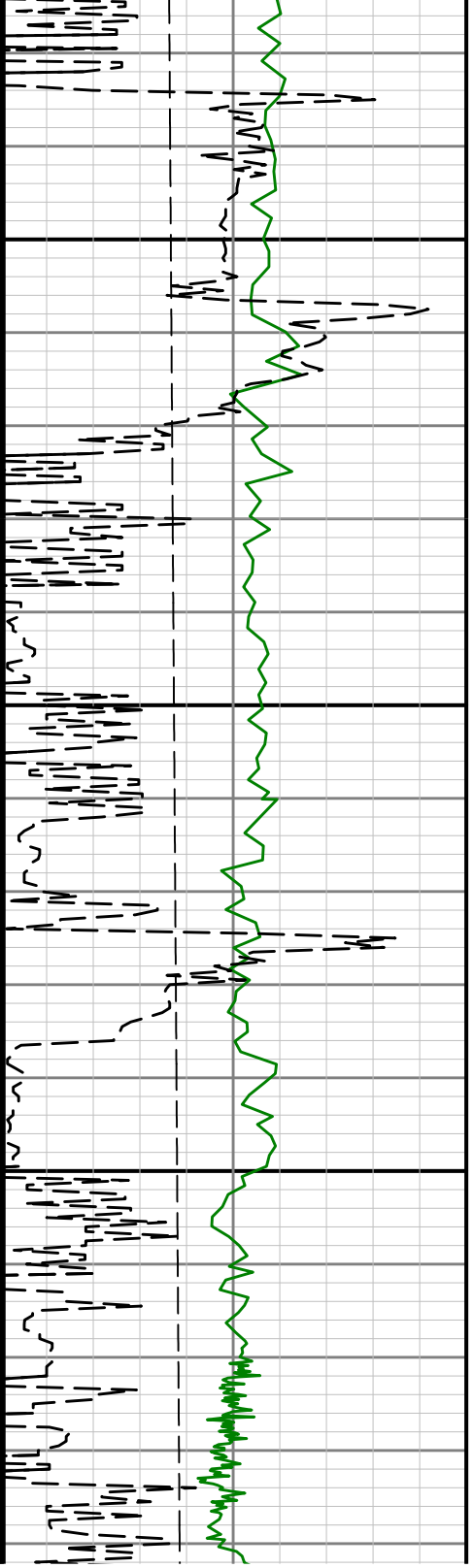
2400

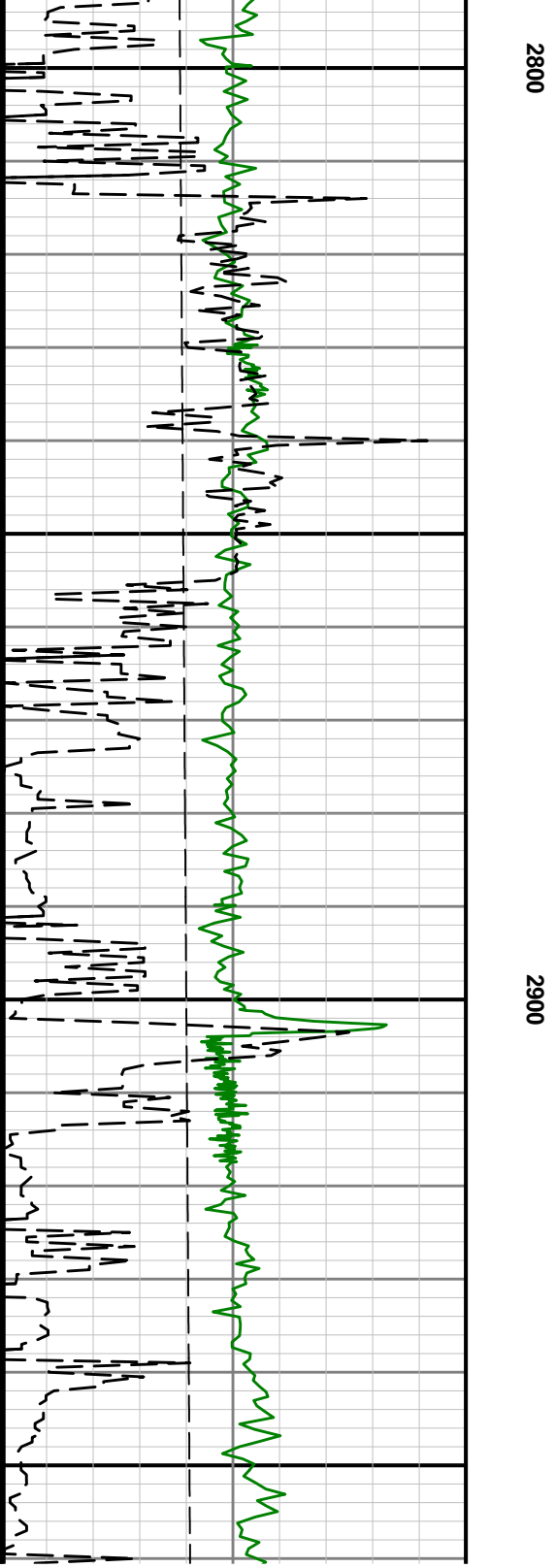
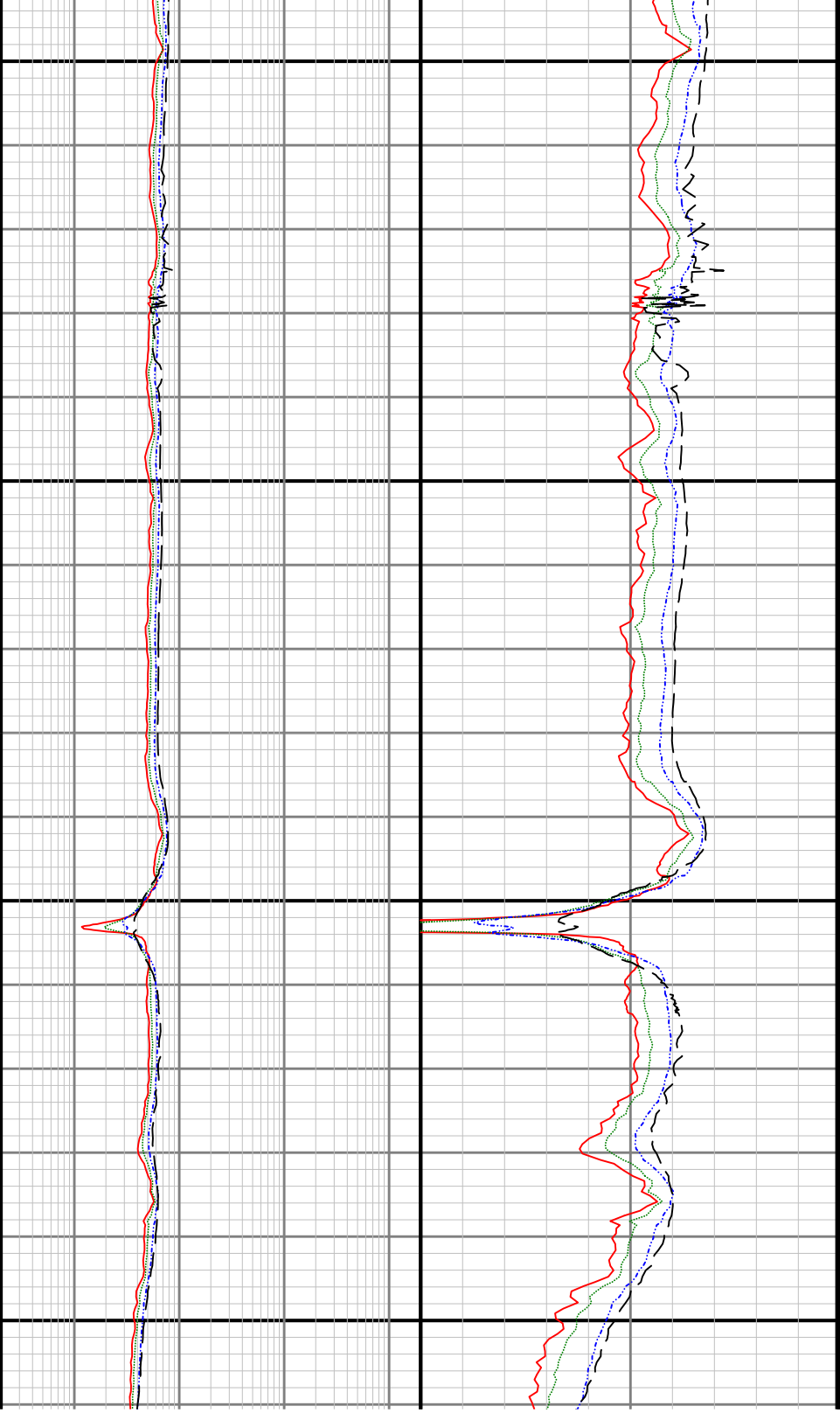


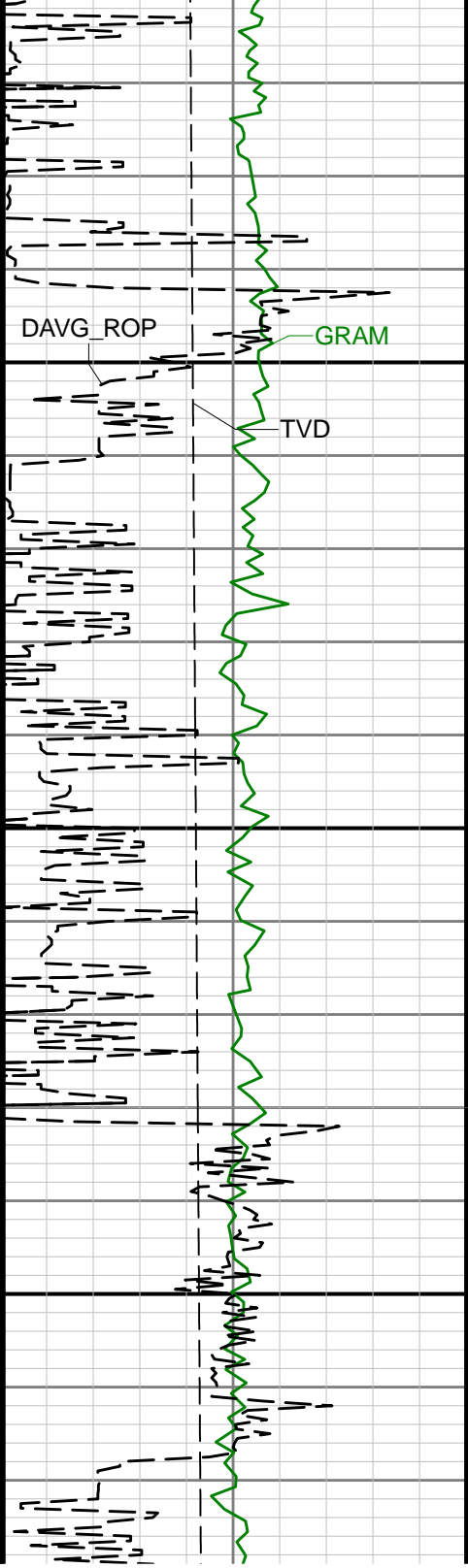




2700

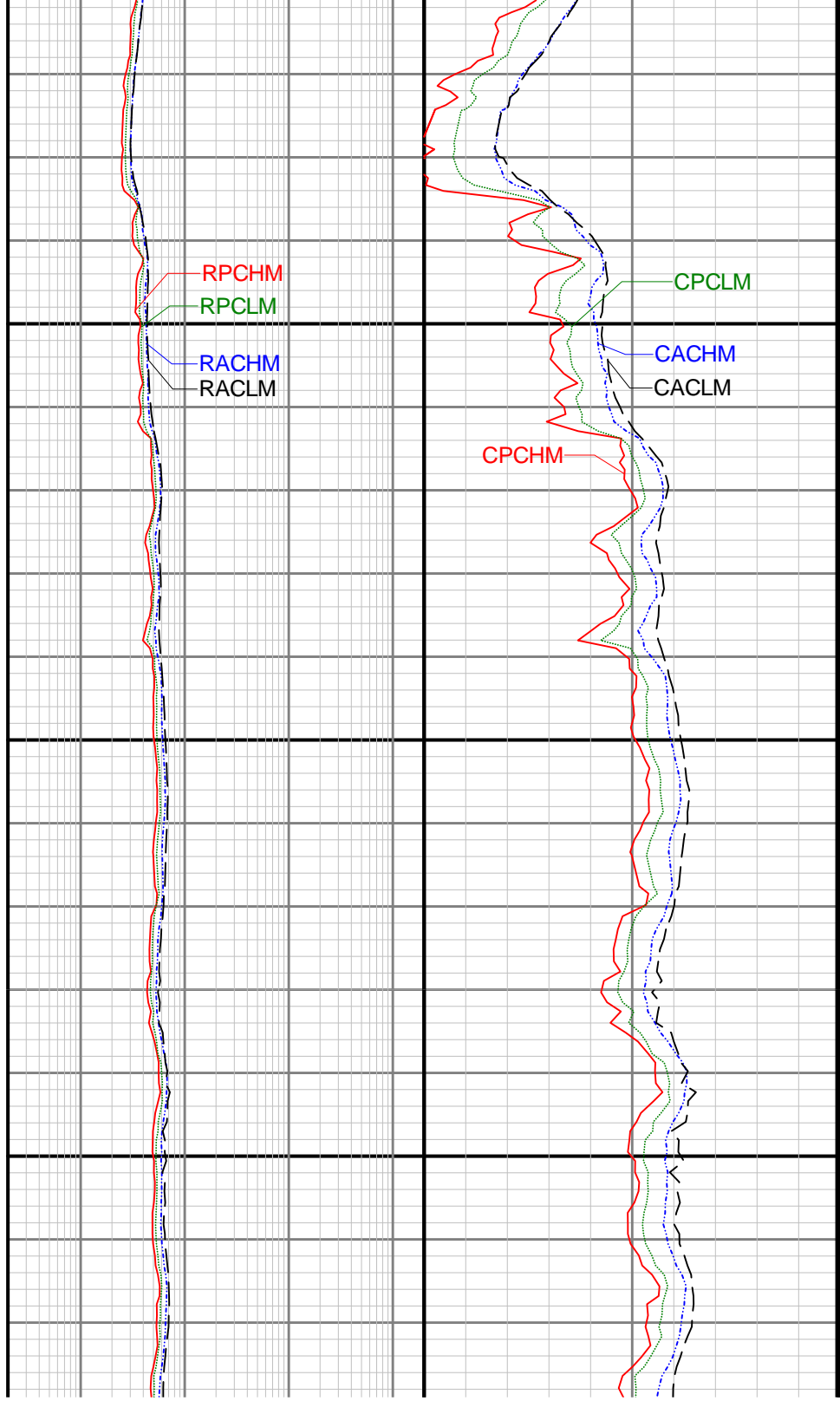


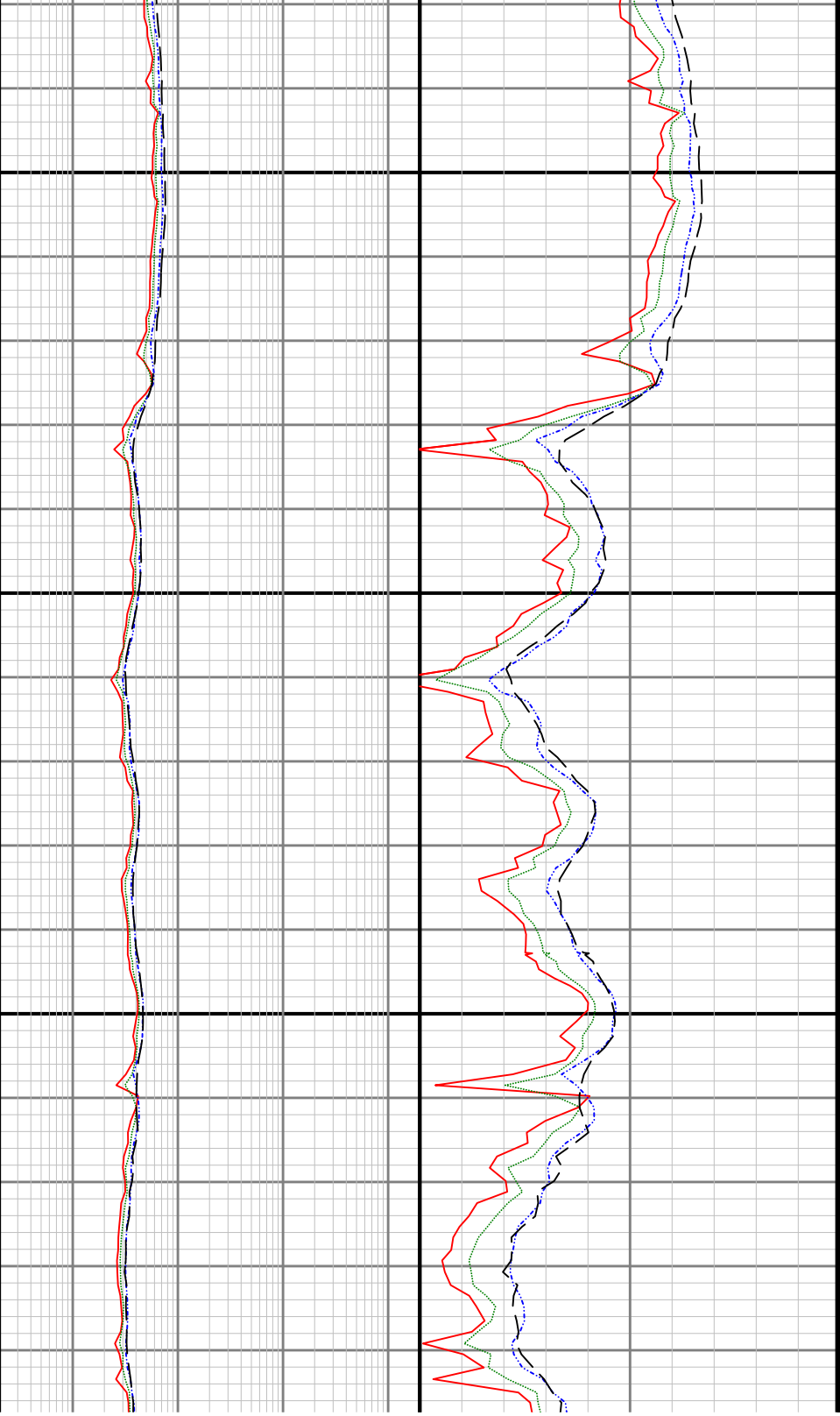




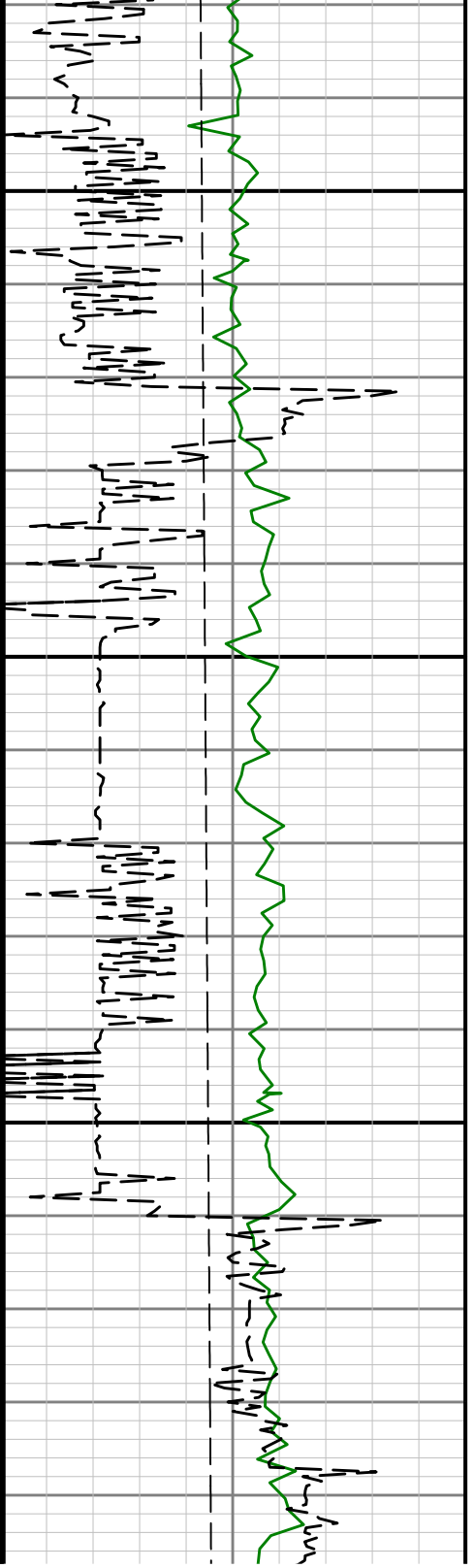
3000

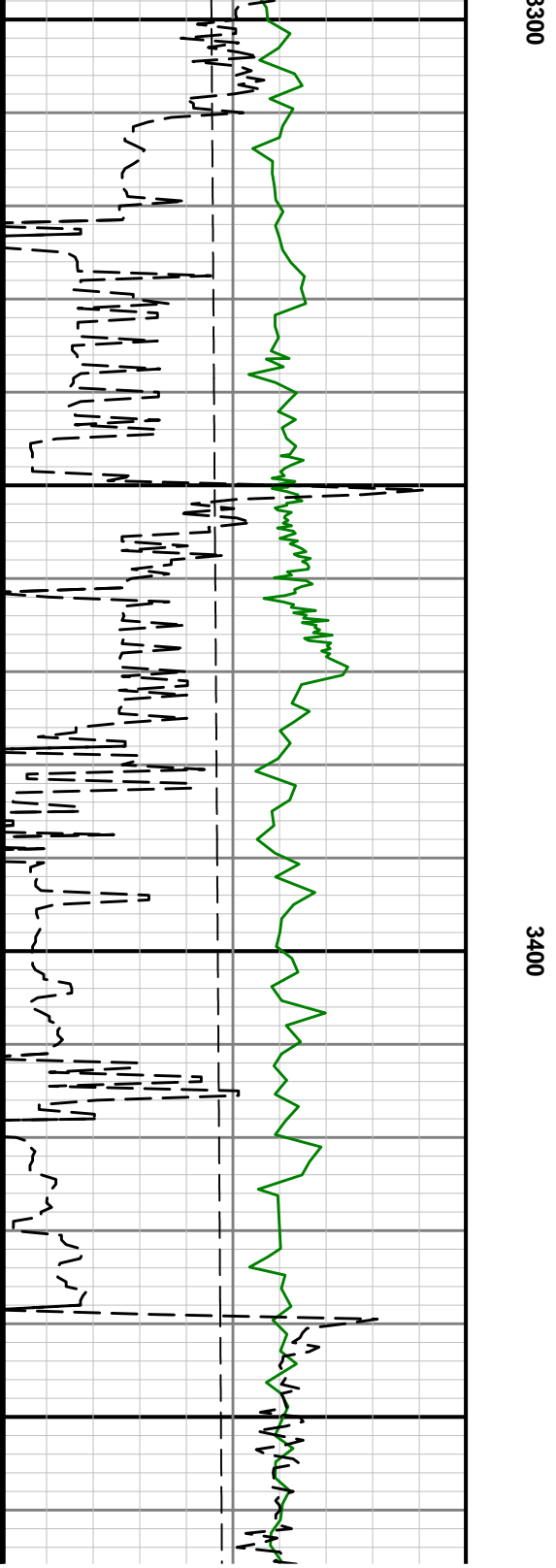
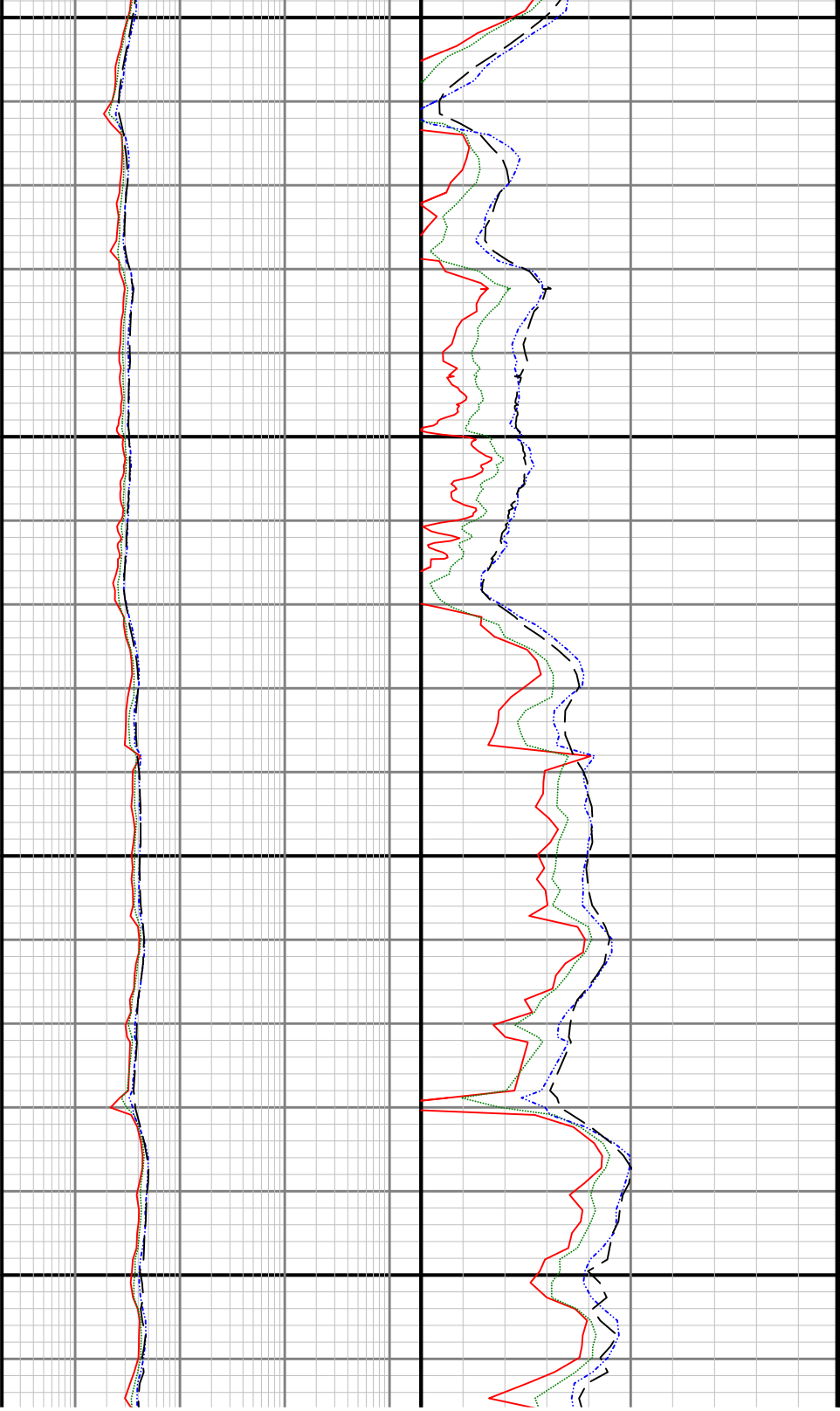
3100

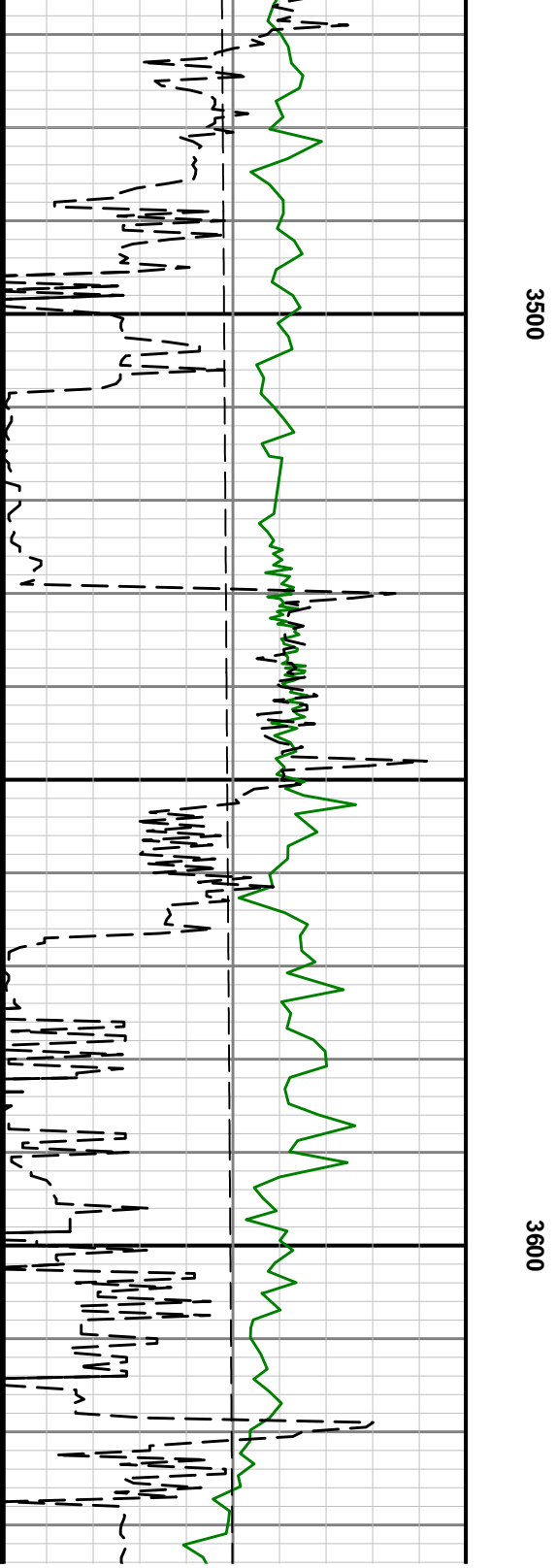
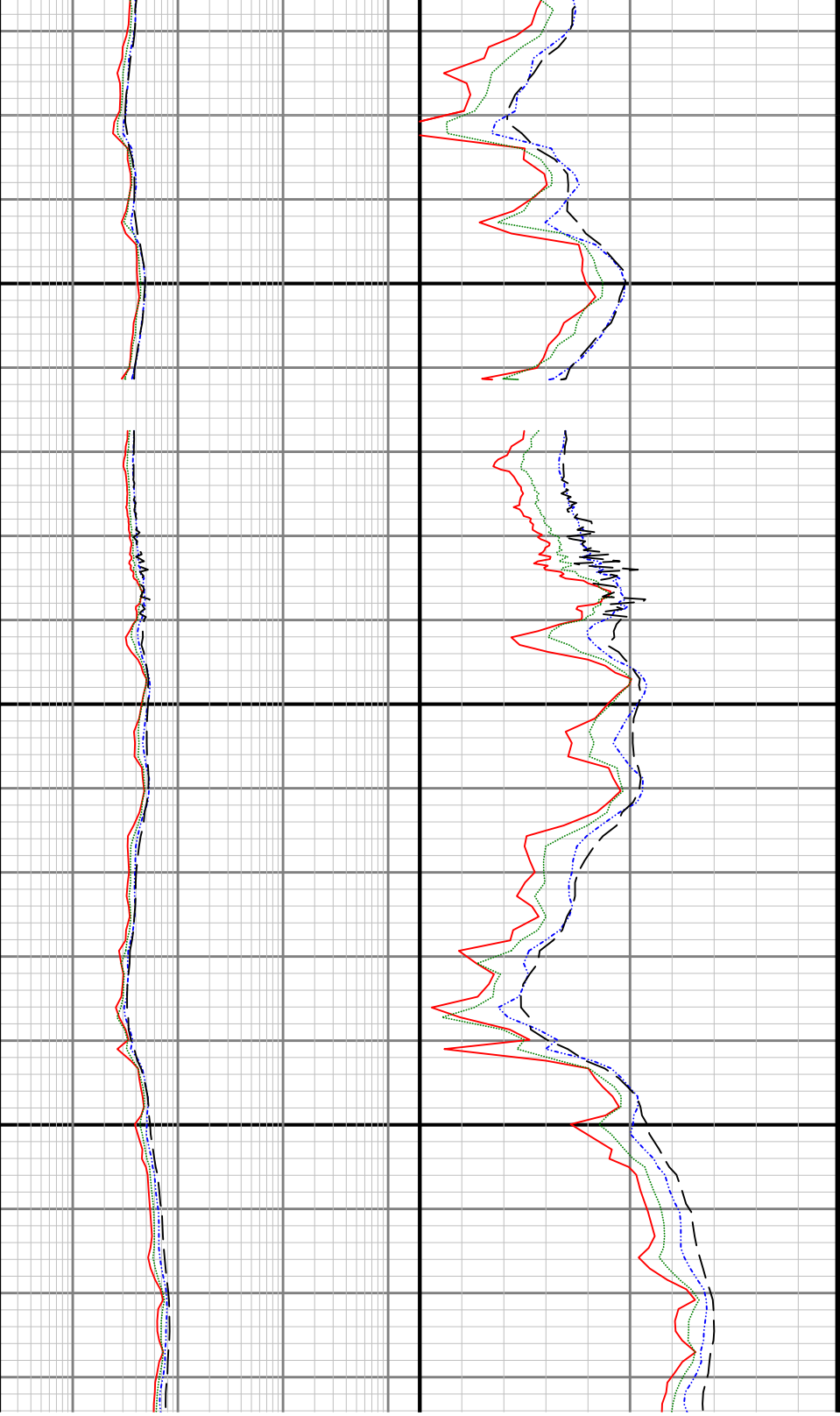


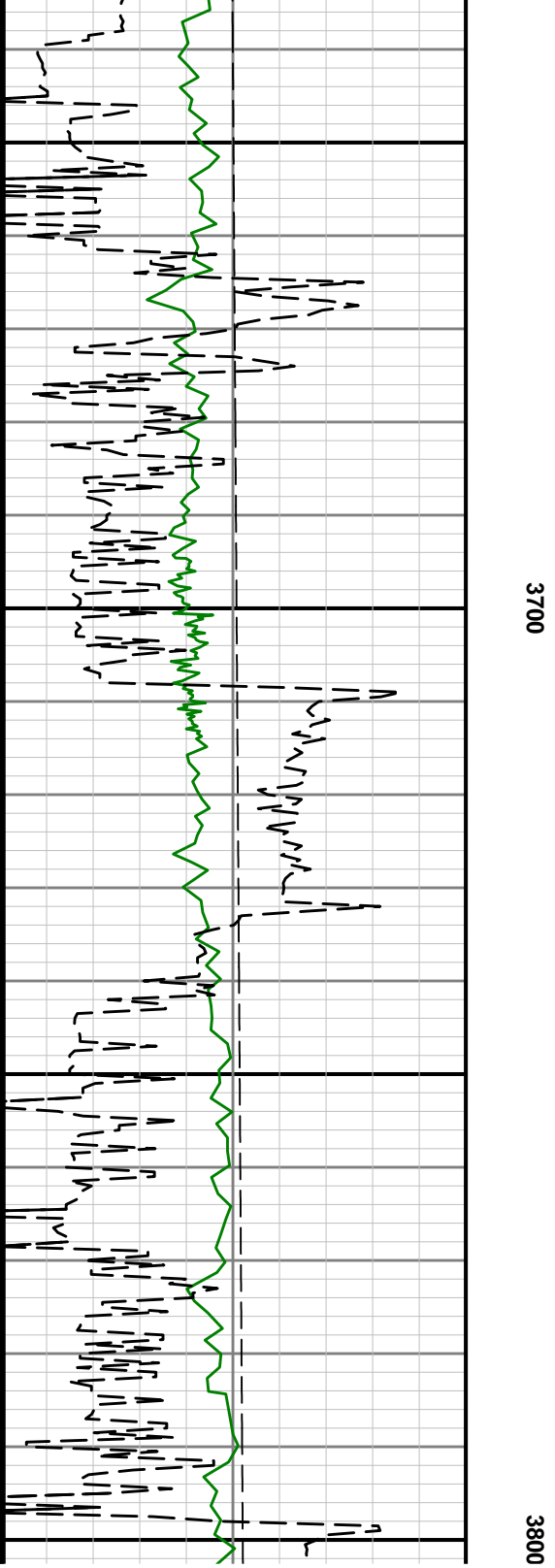
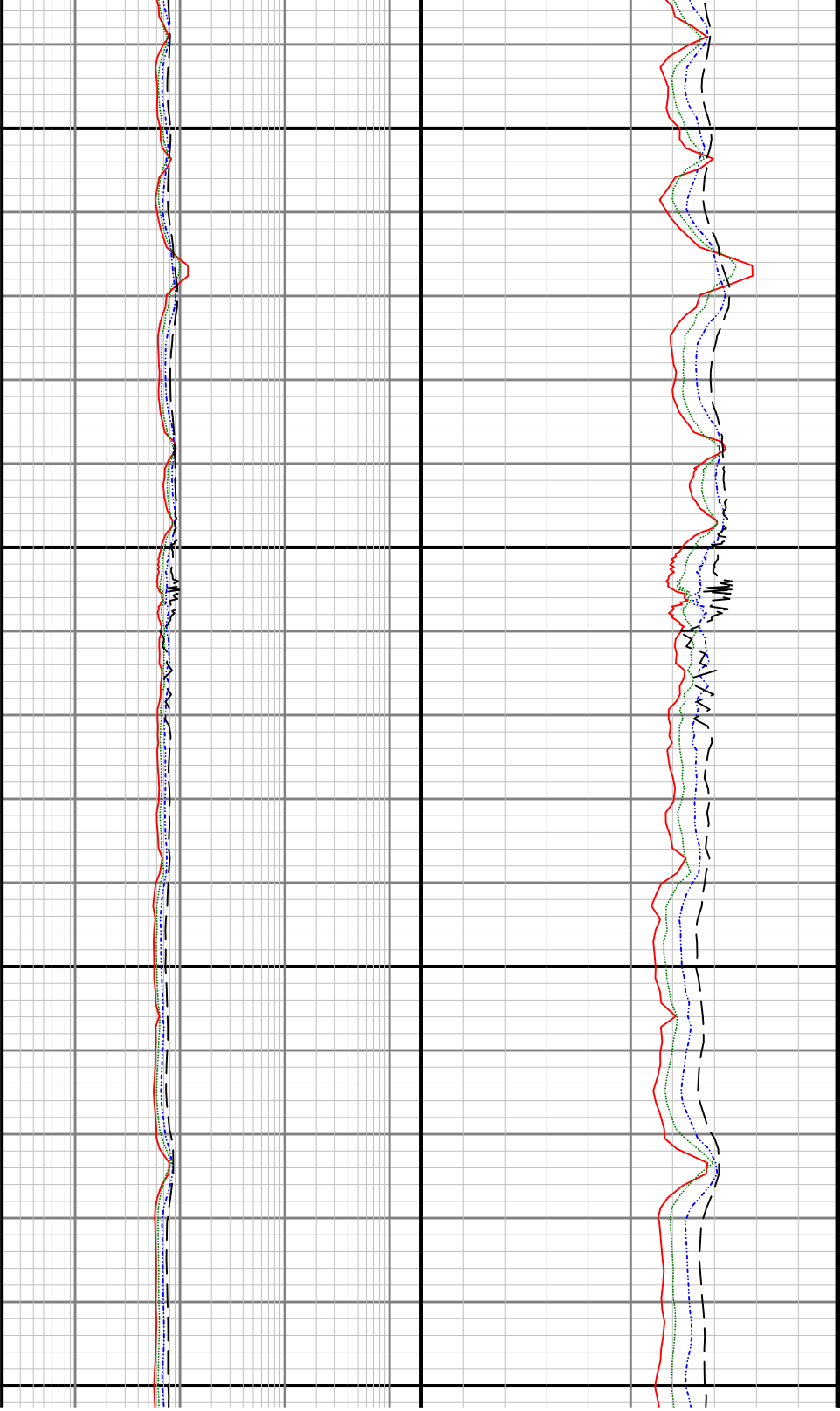


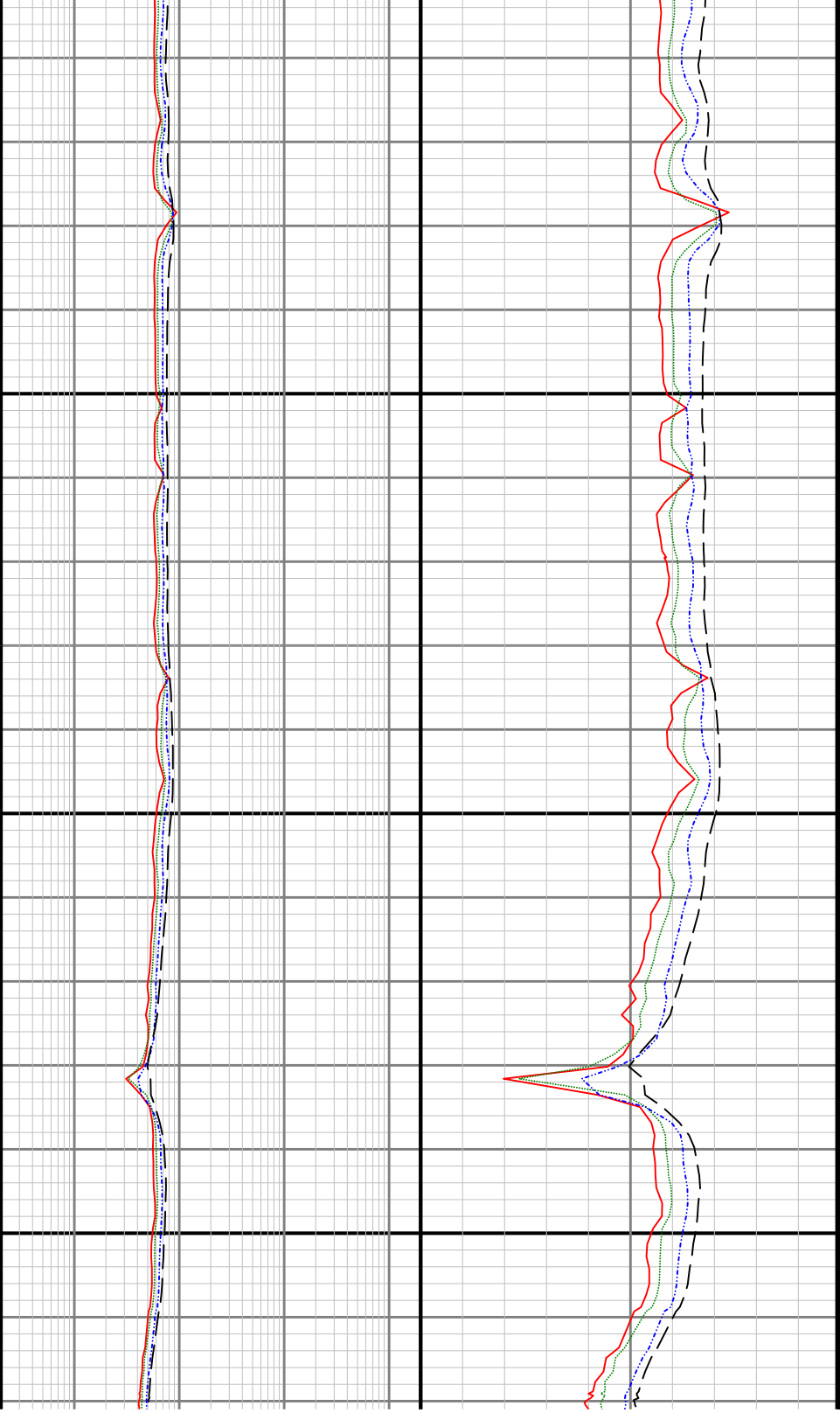
3200



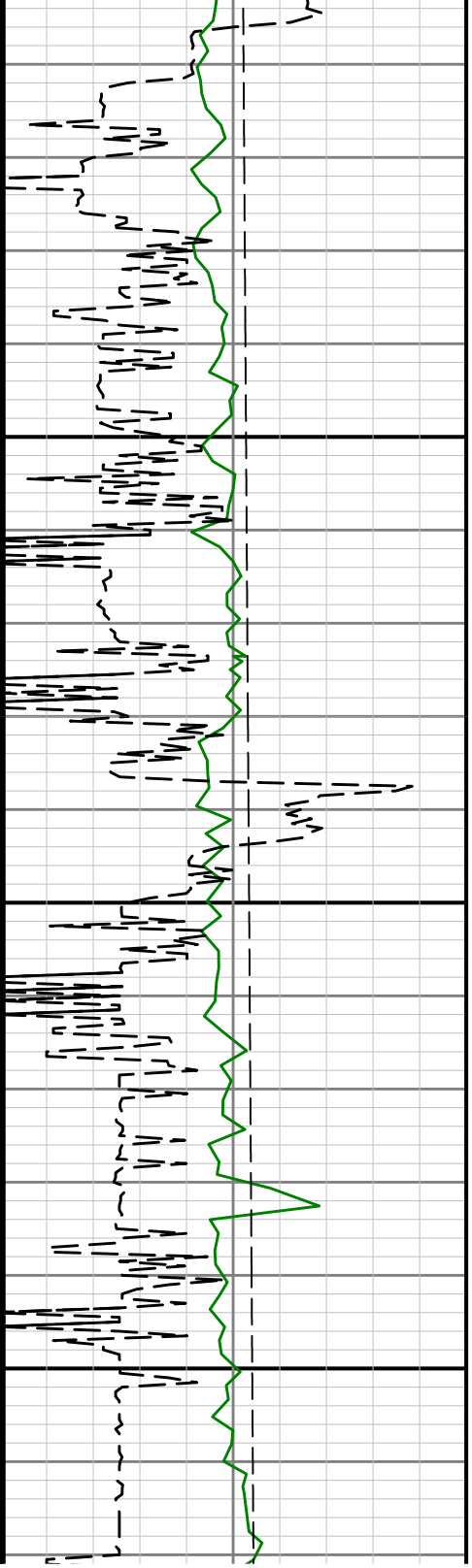


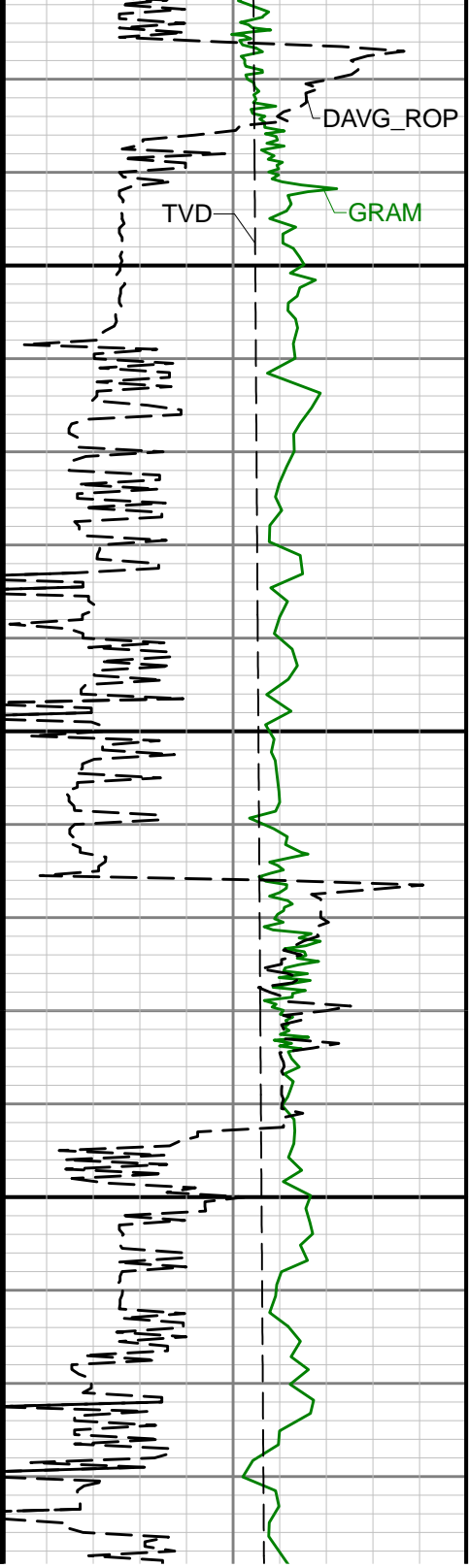






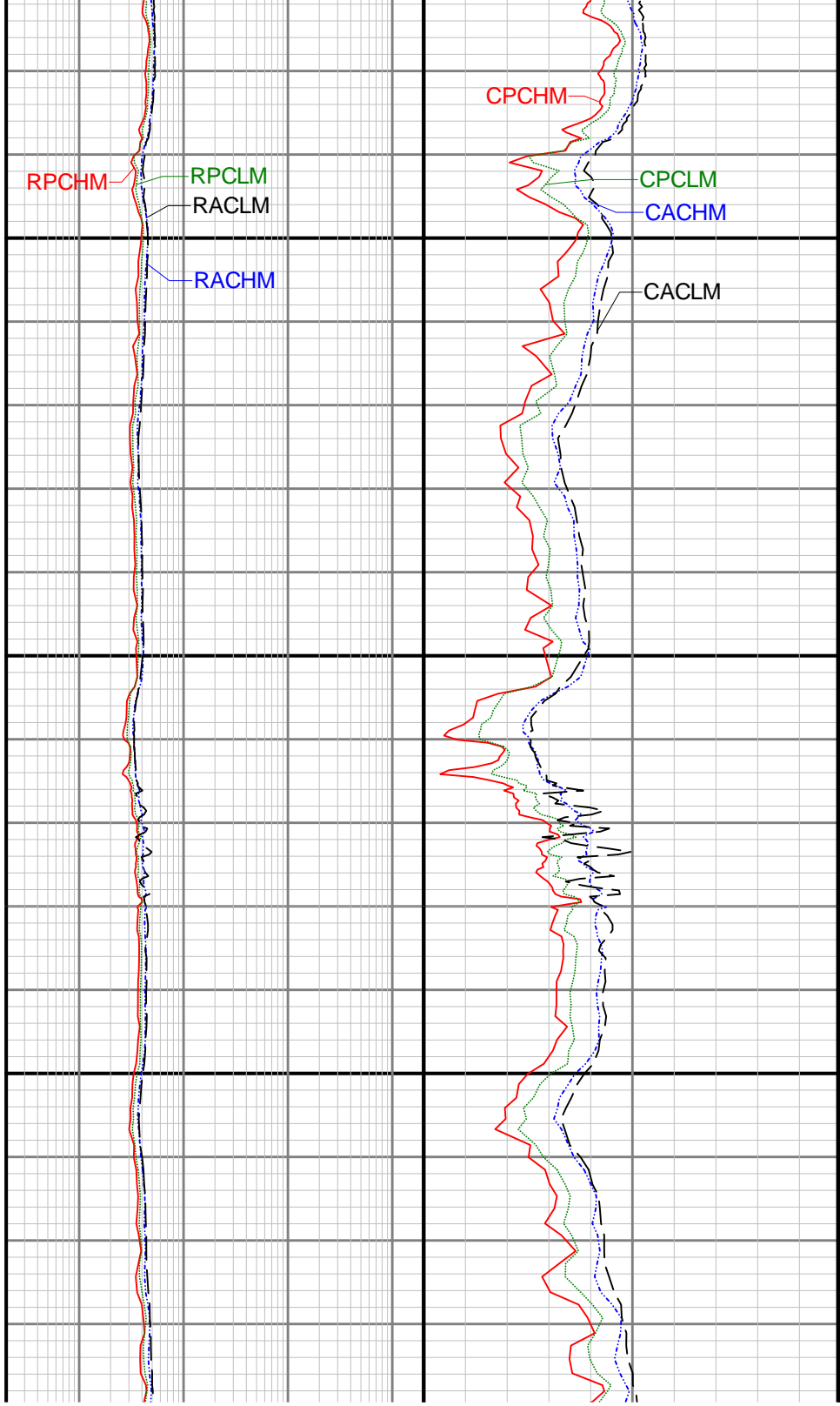
3900

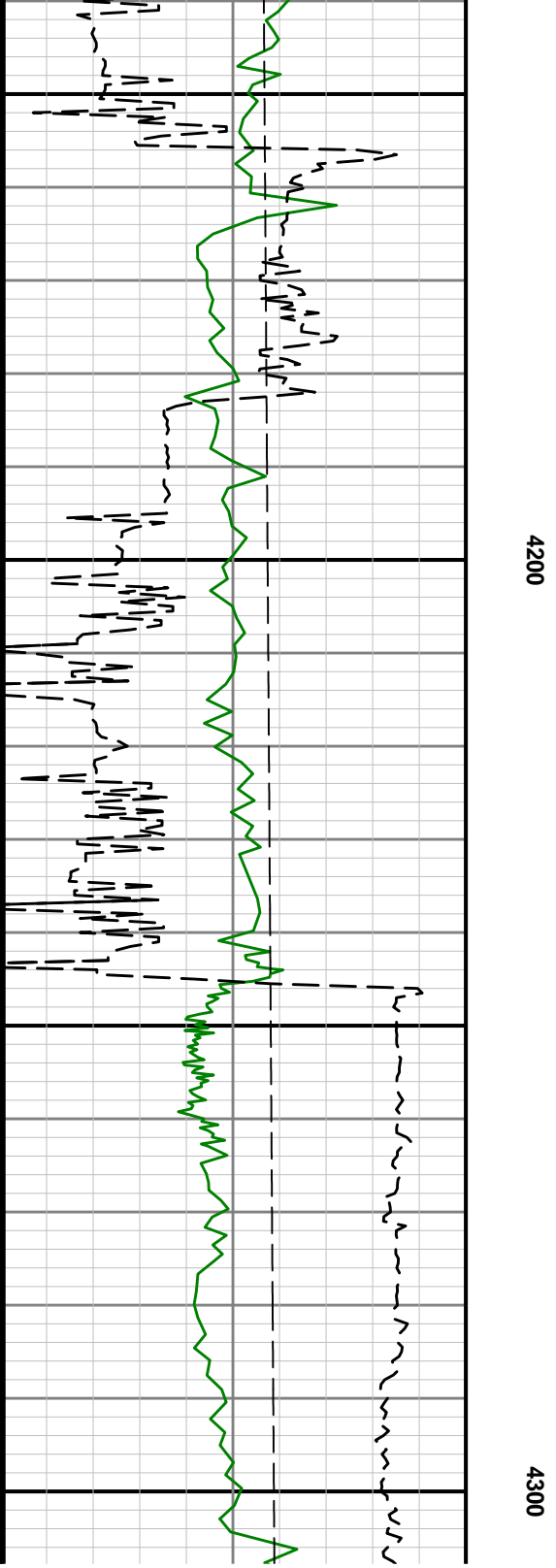
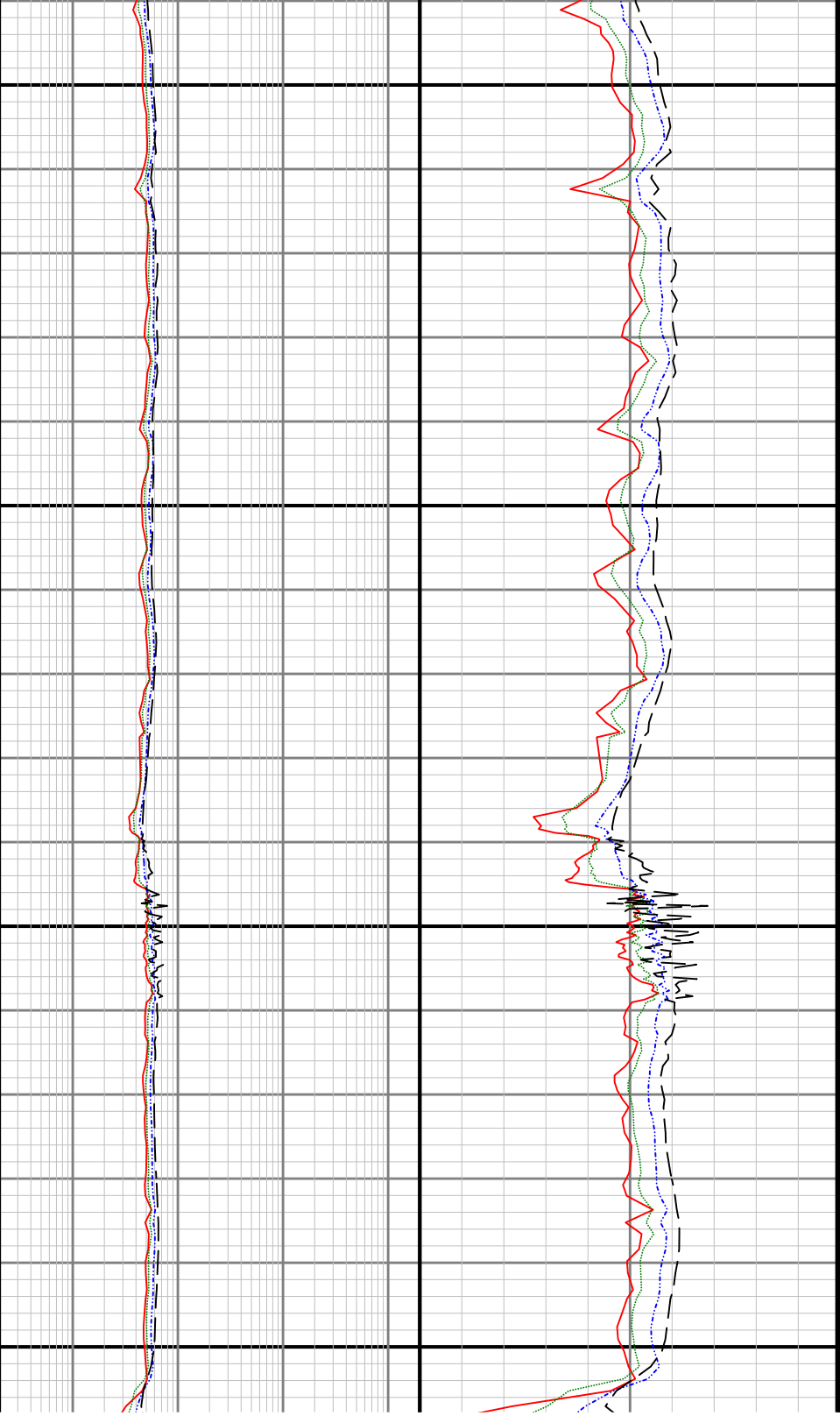


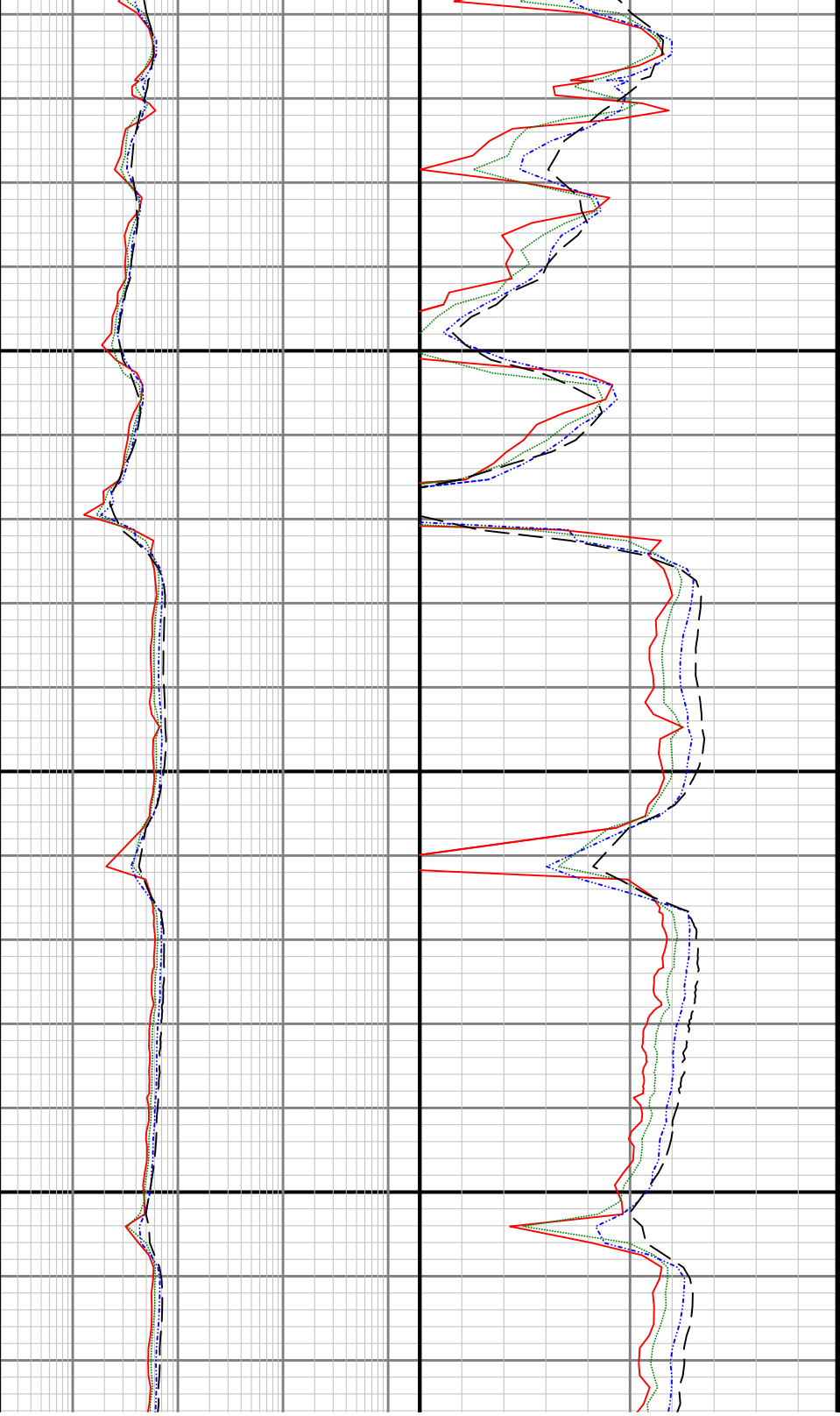


4000

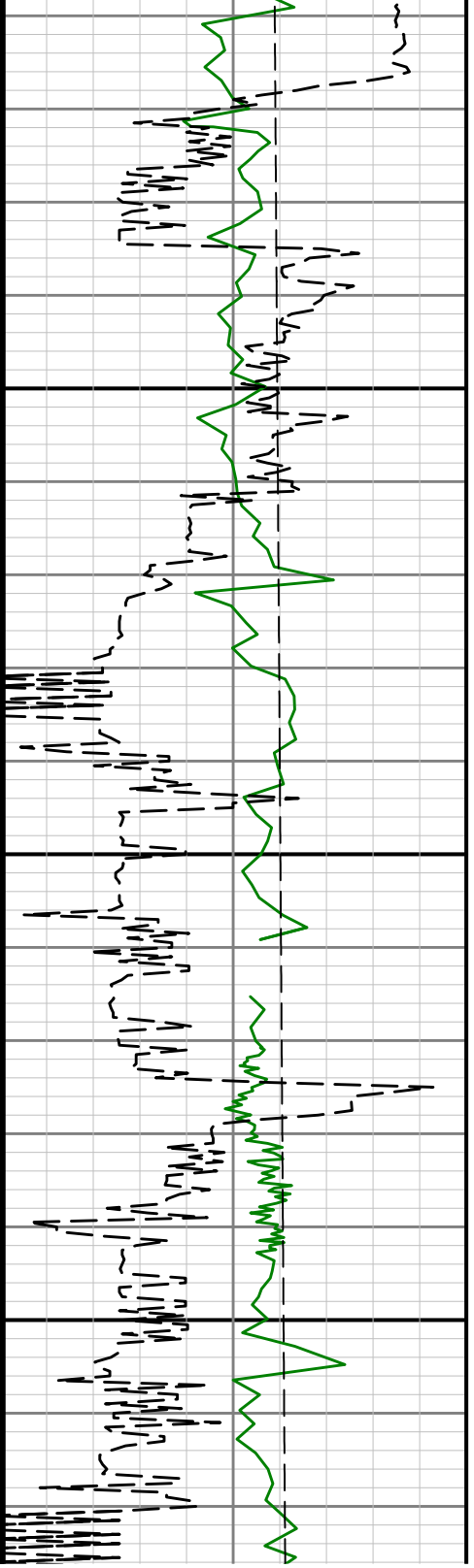
4100

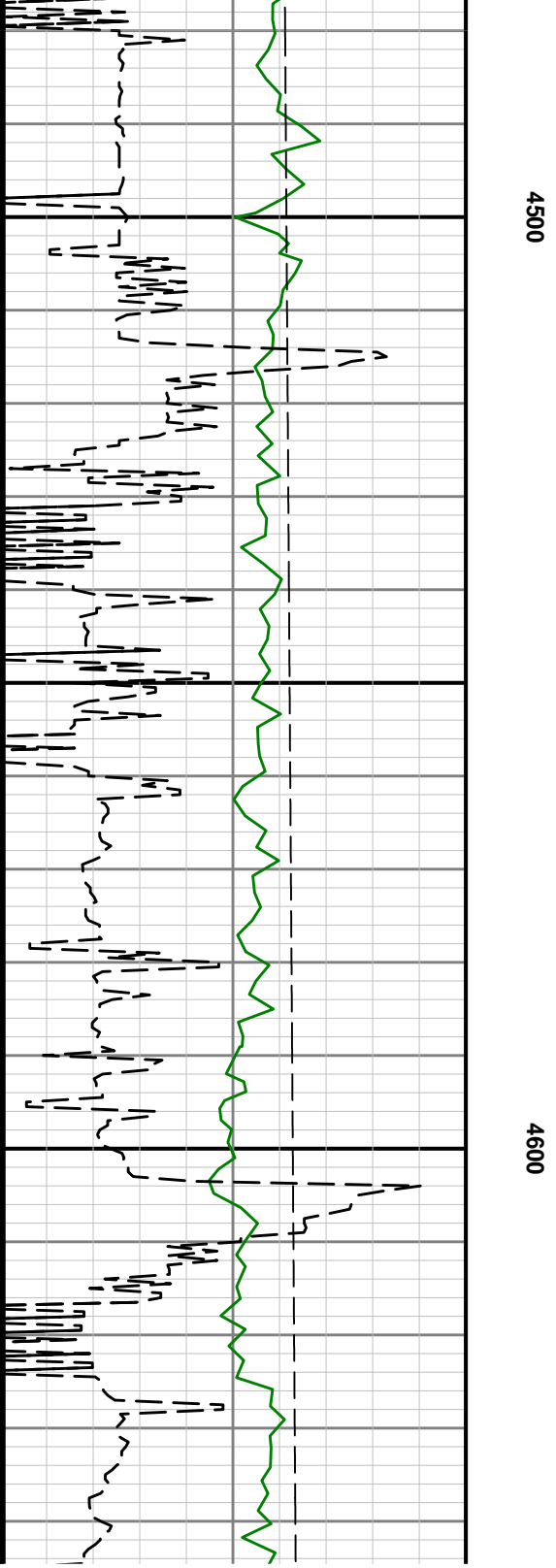
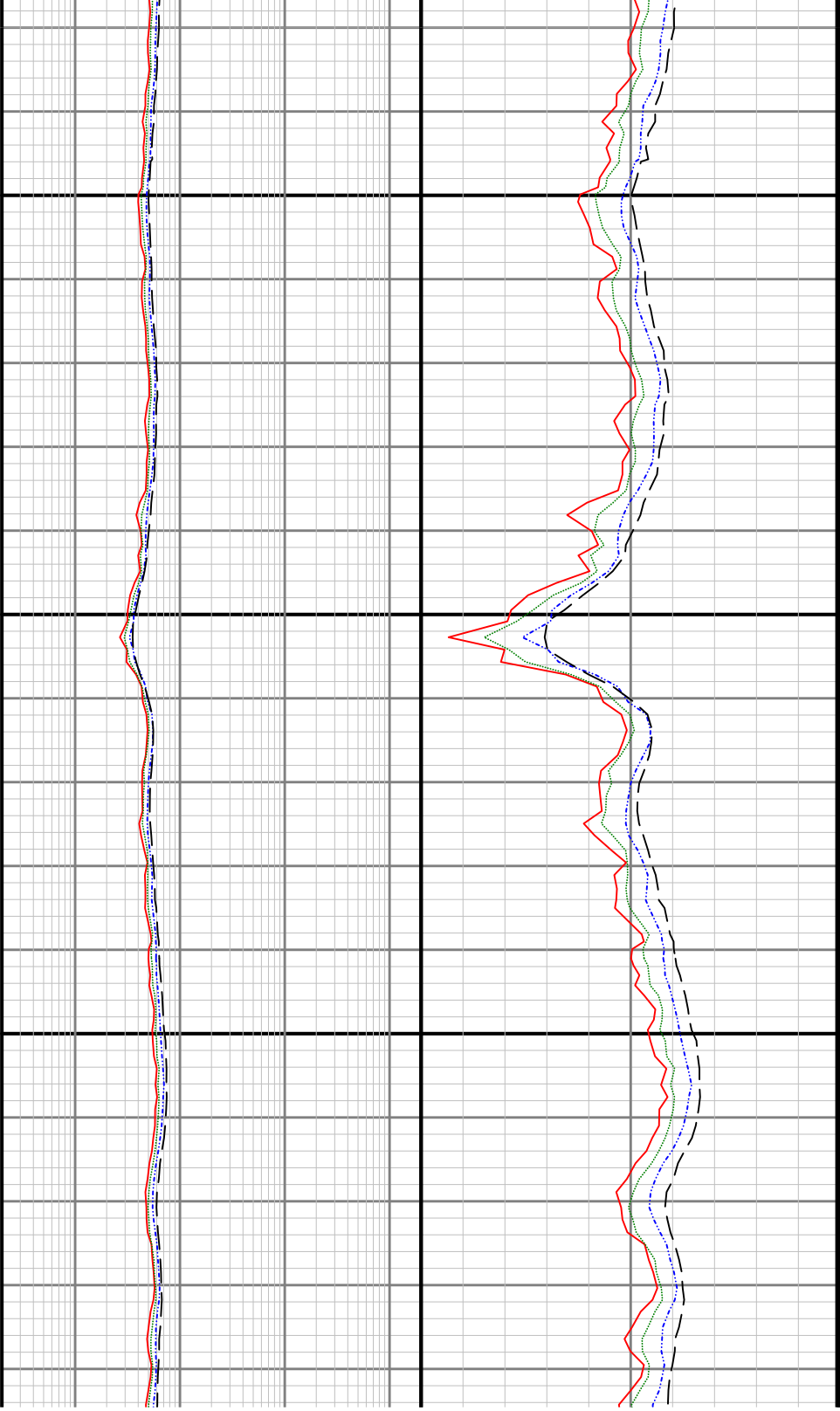


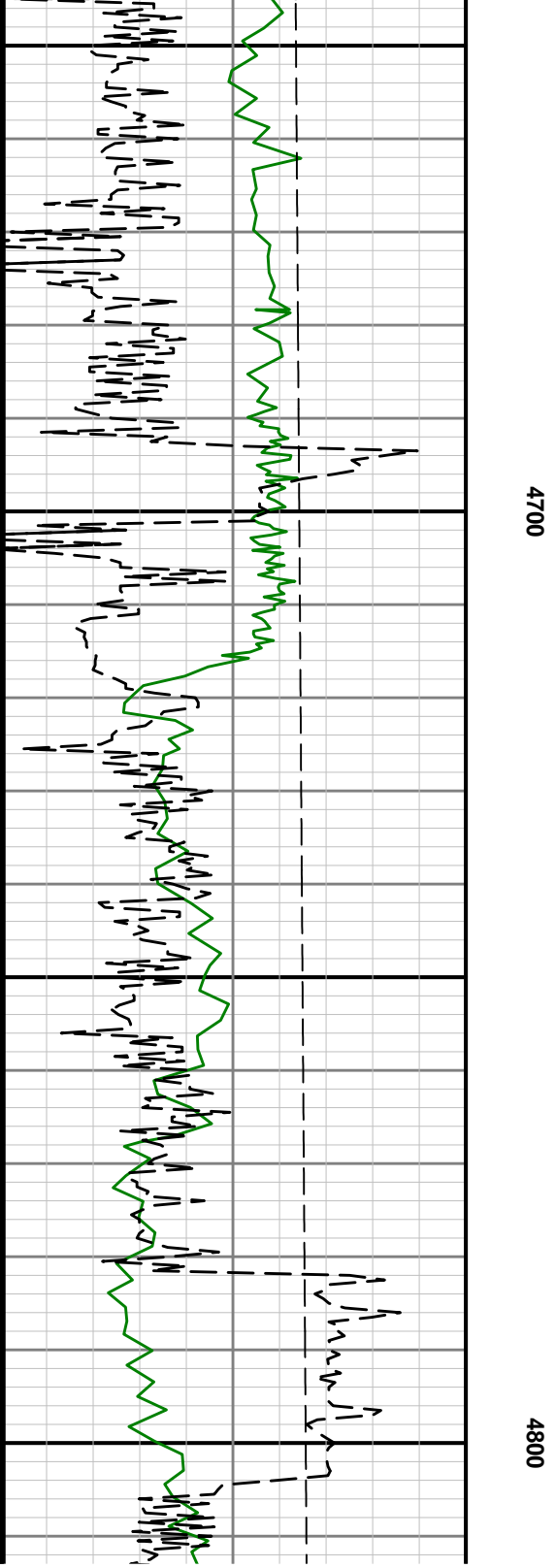
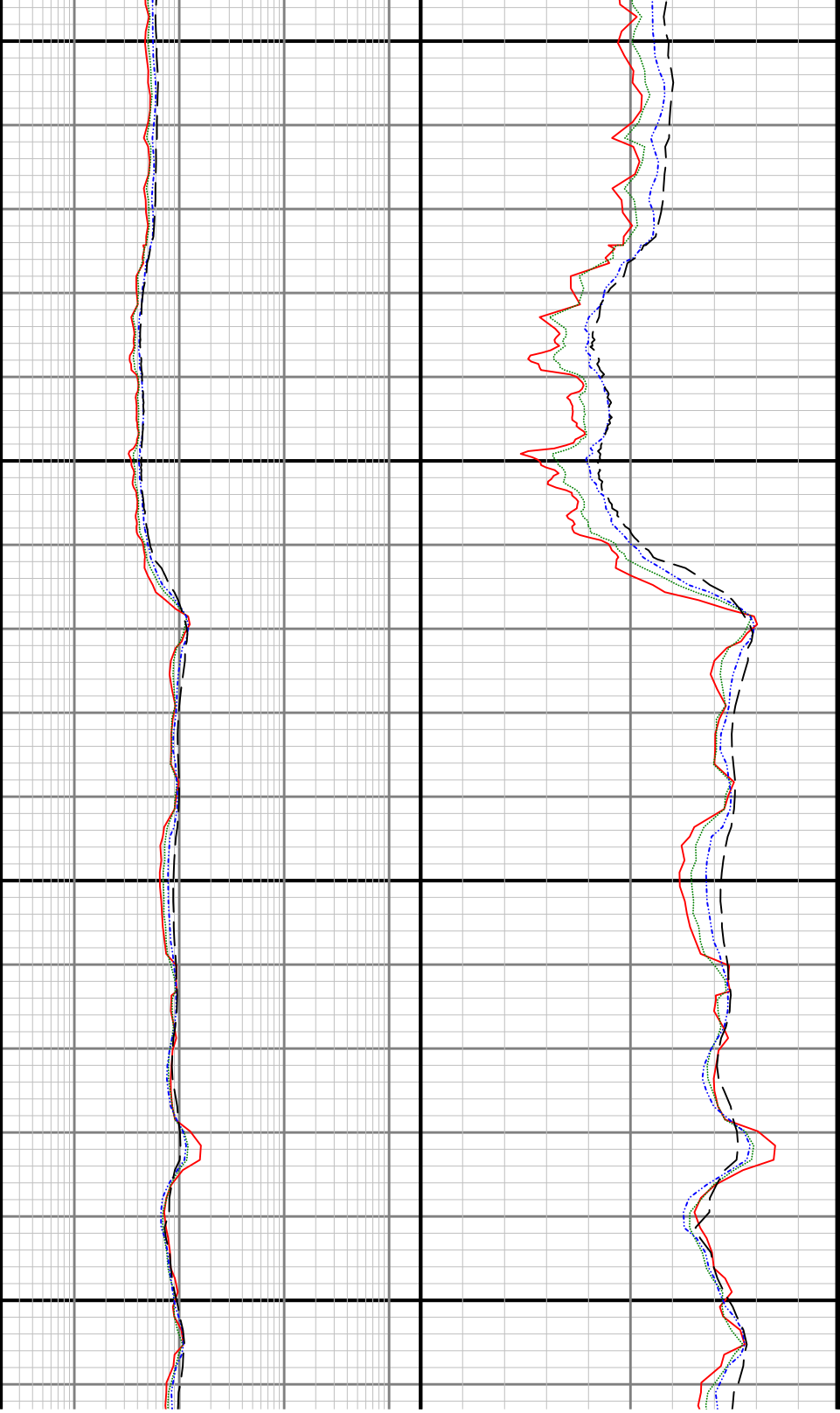


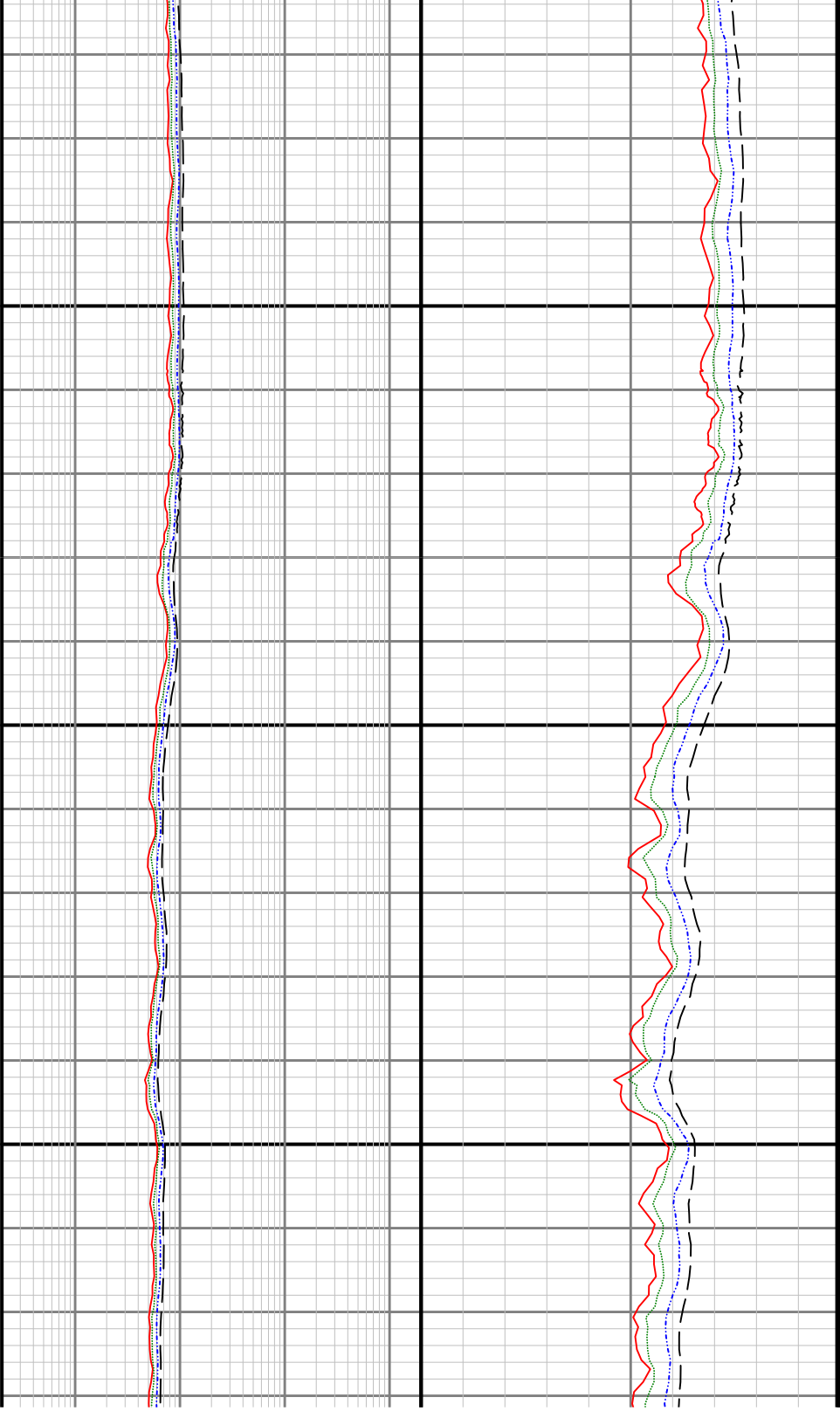


4400

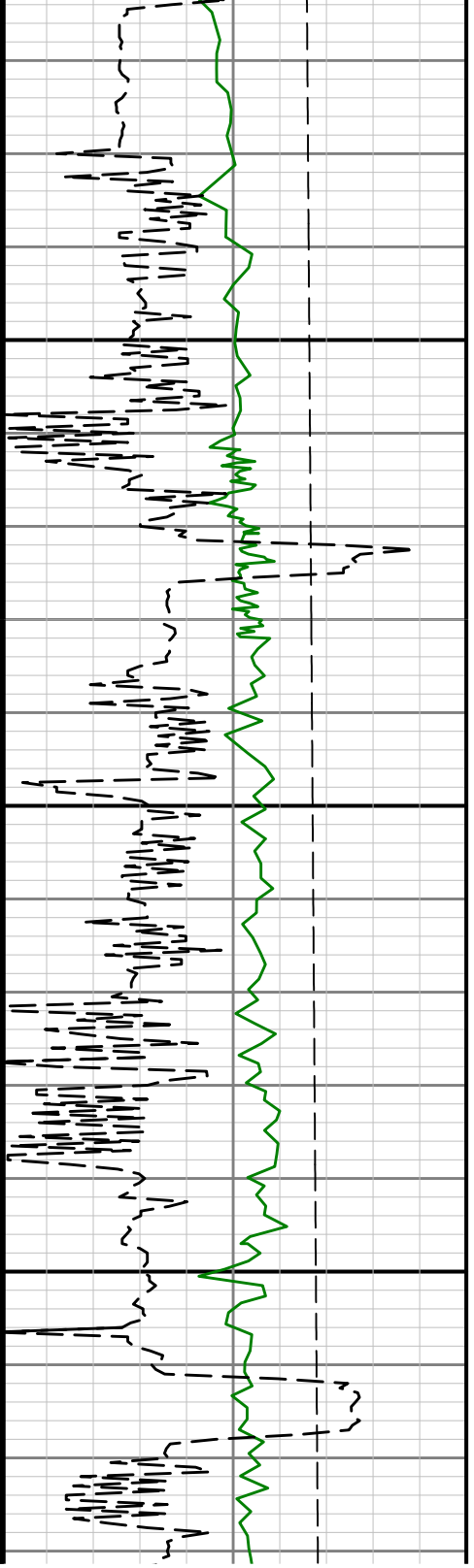


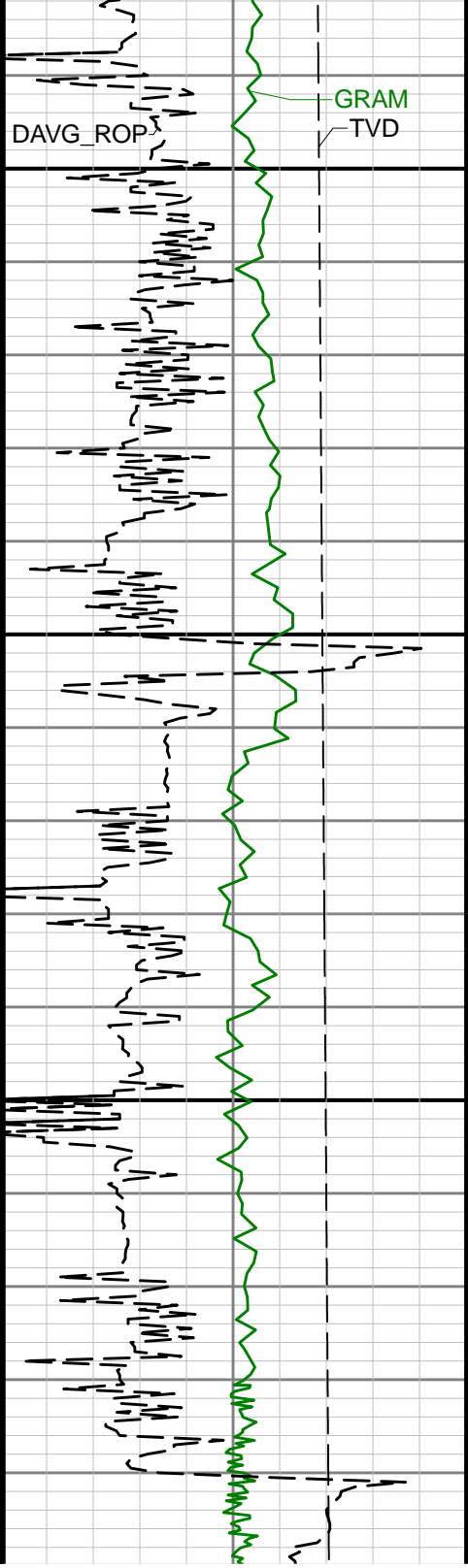






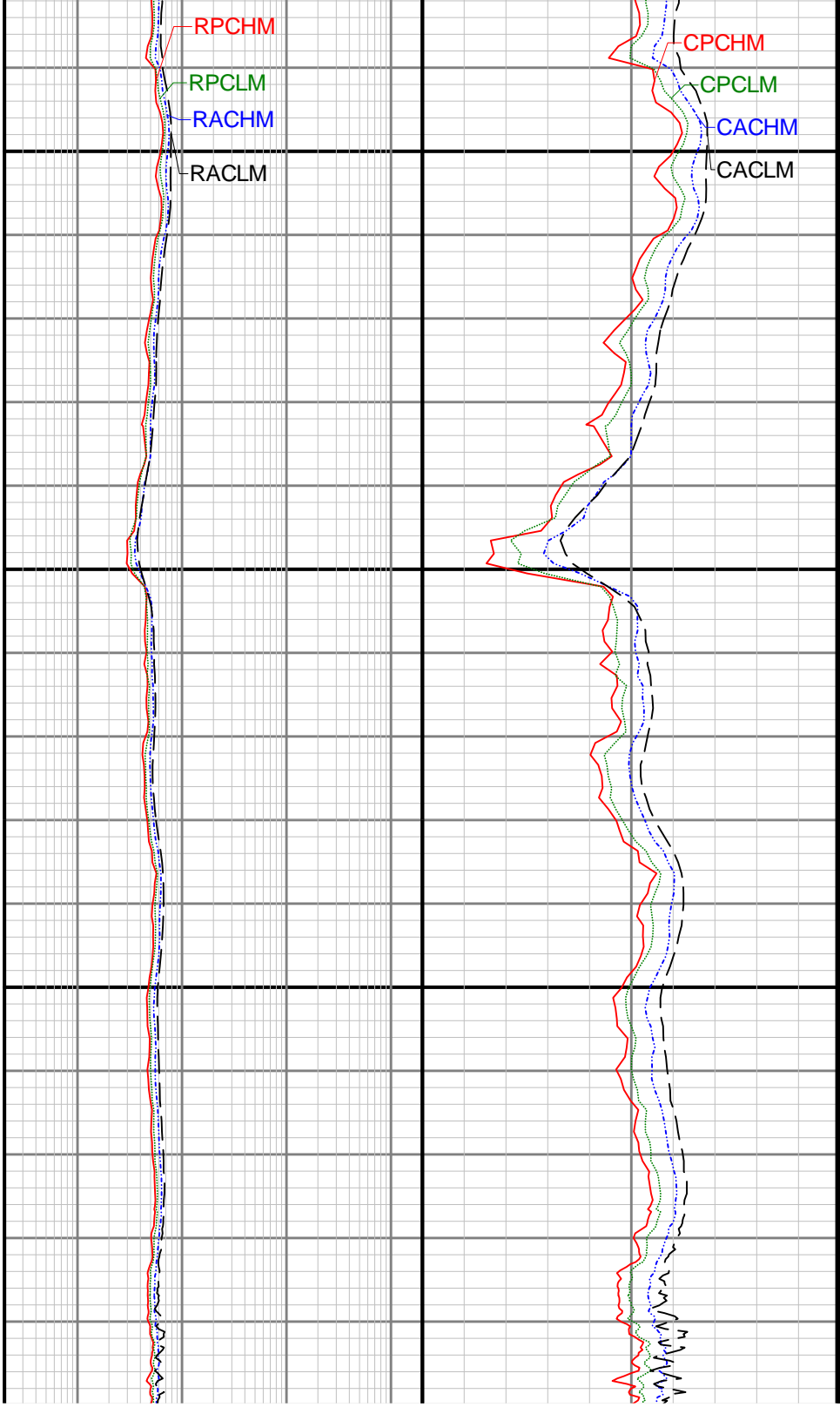
4900

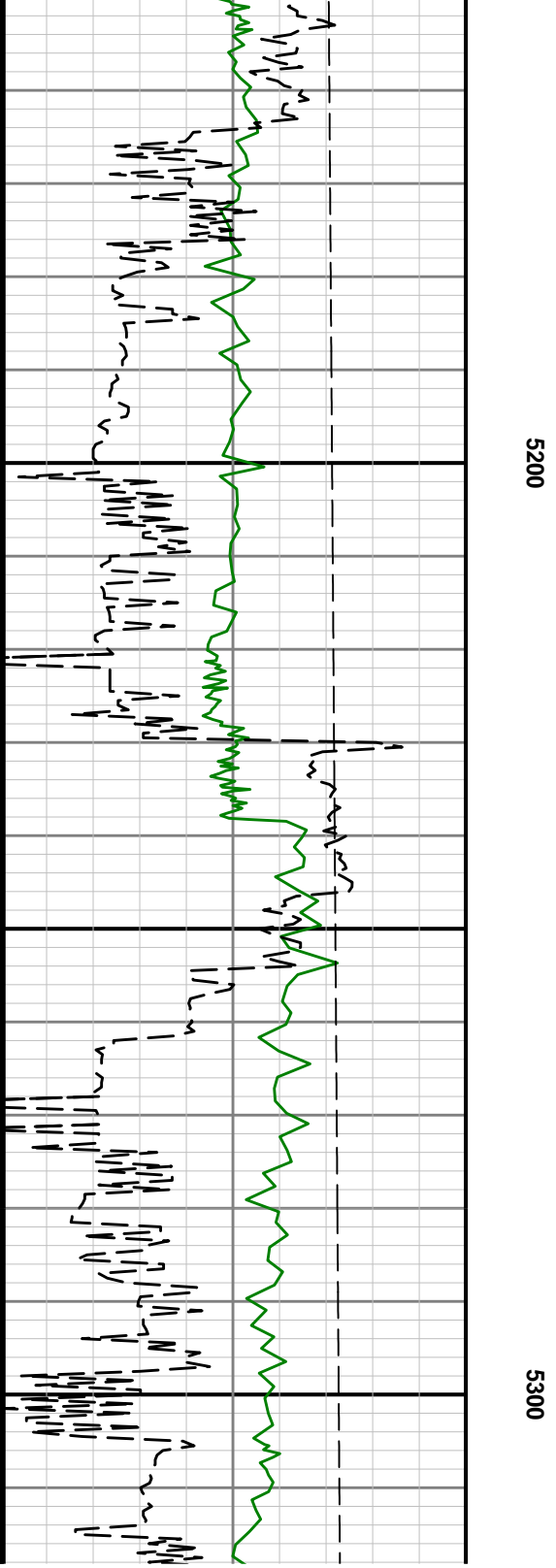
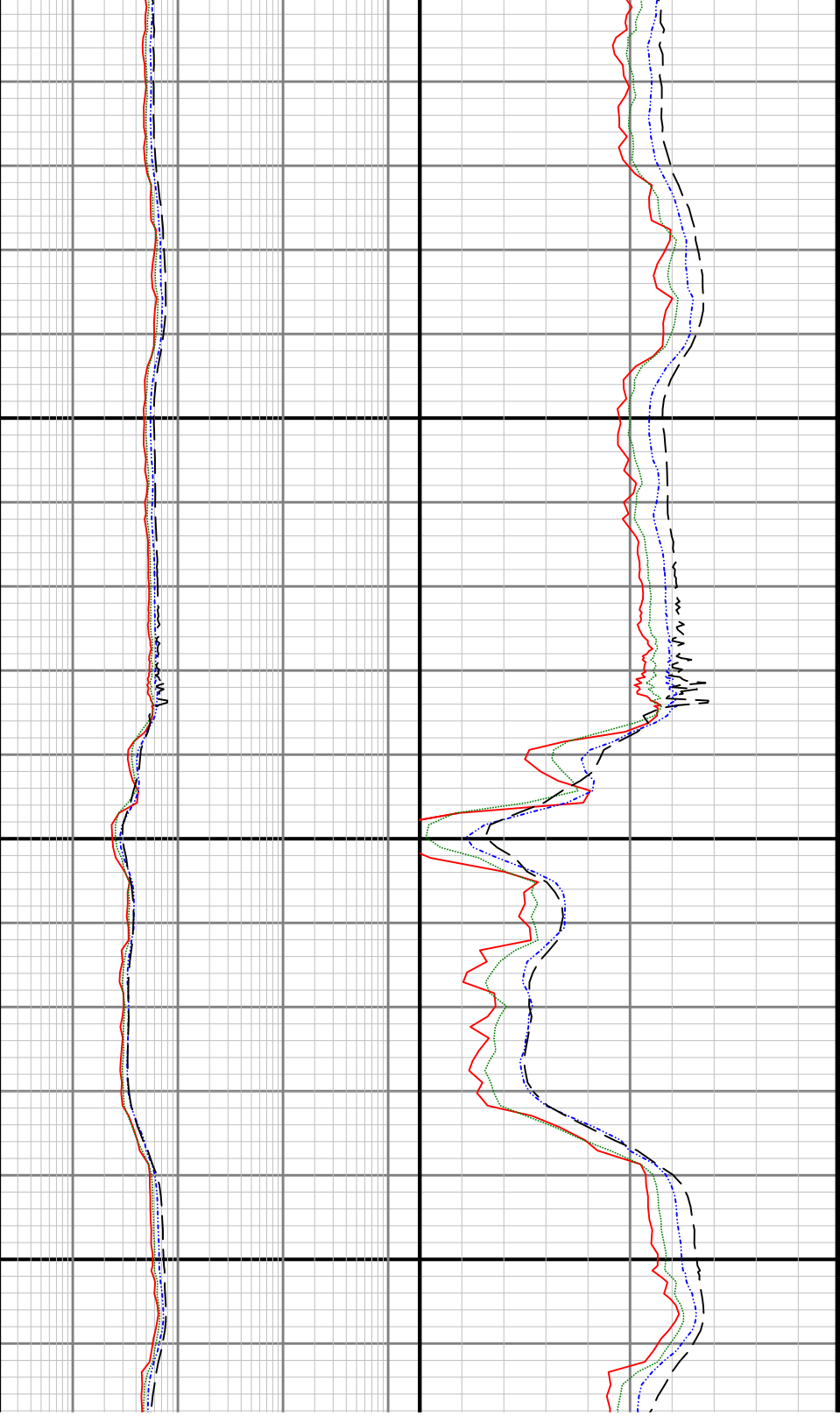


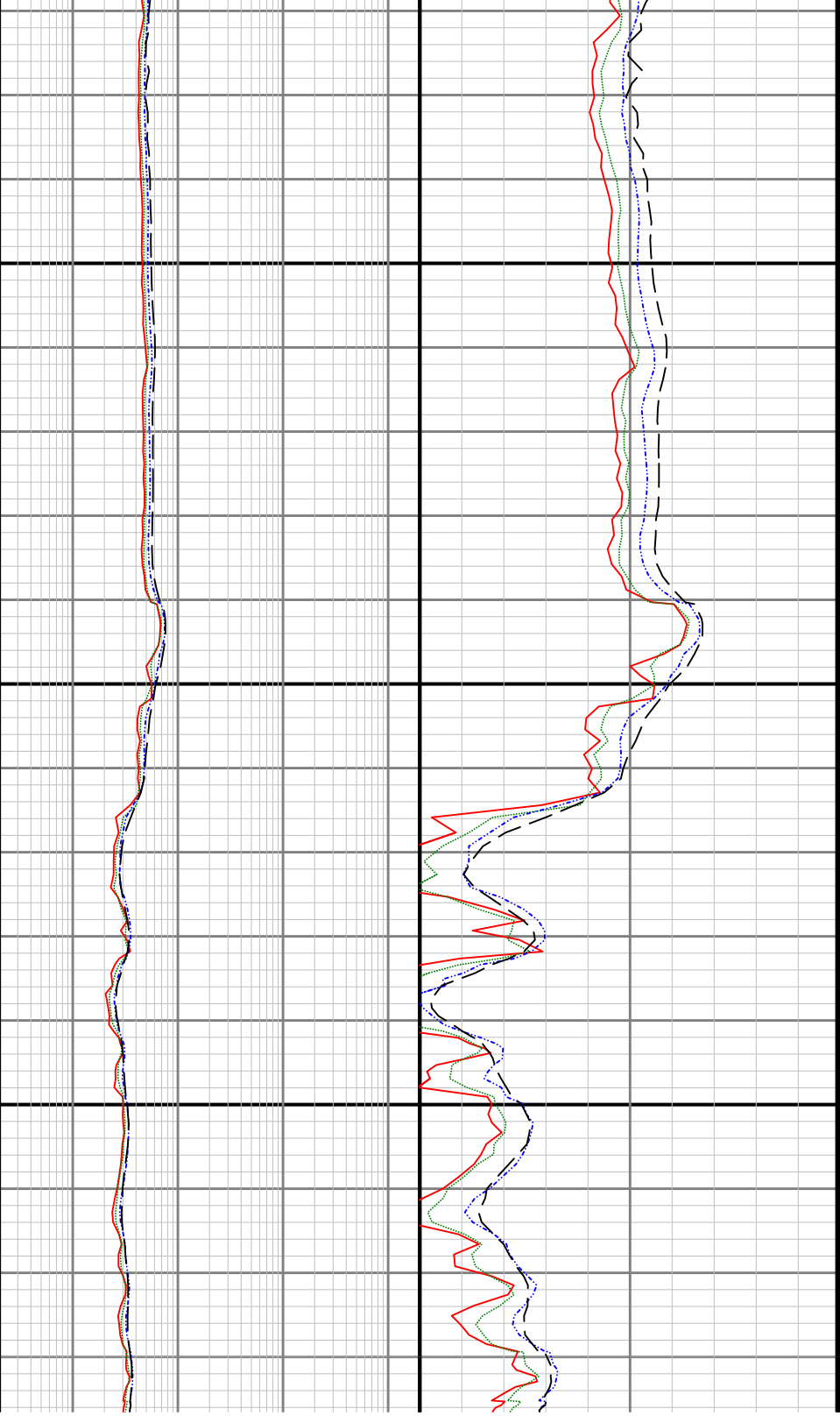


5000

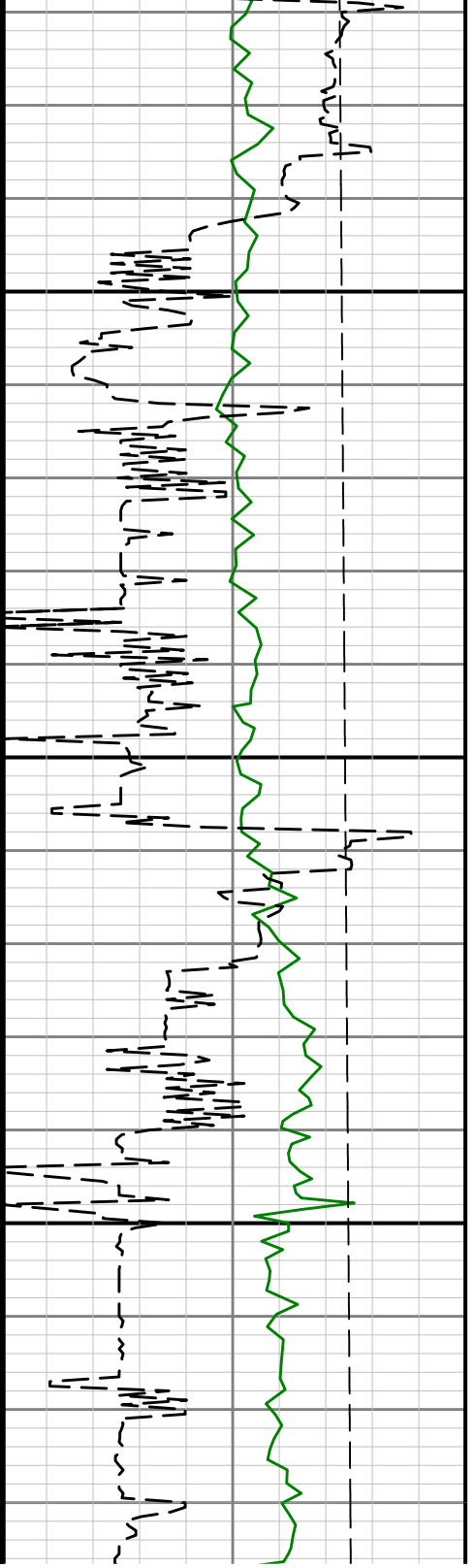
5100

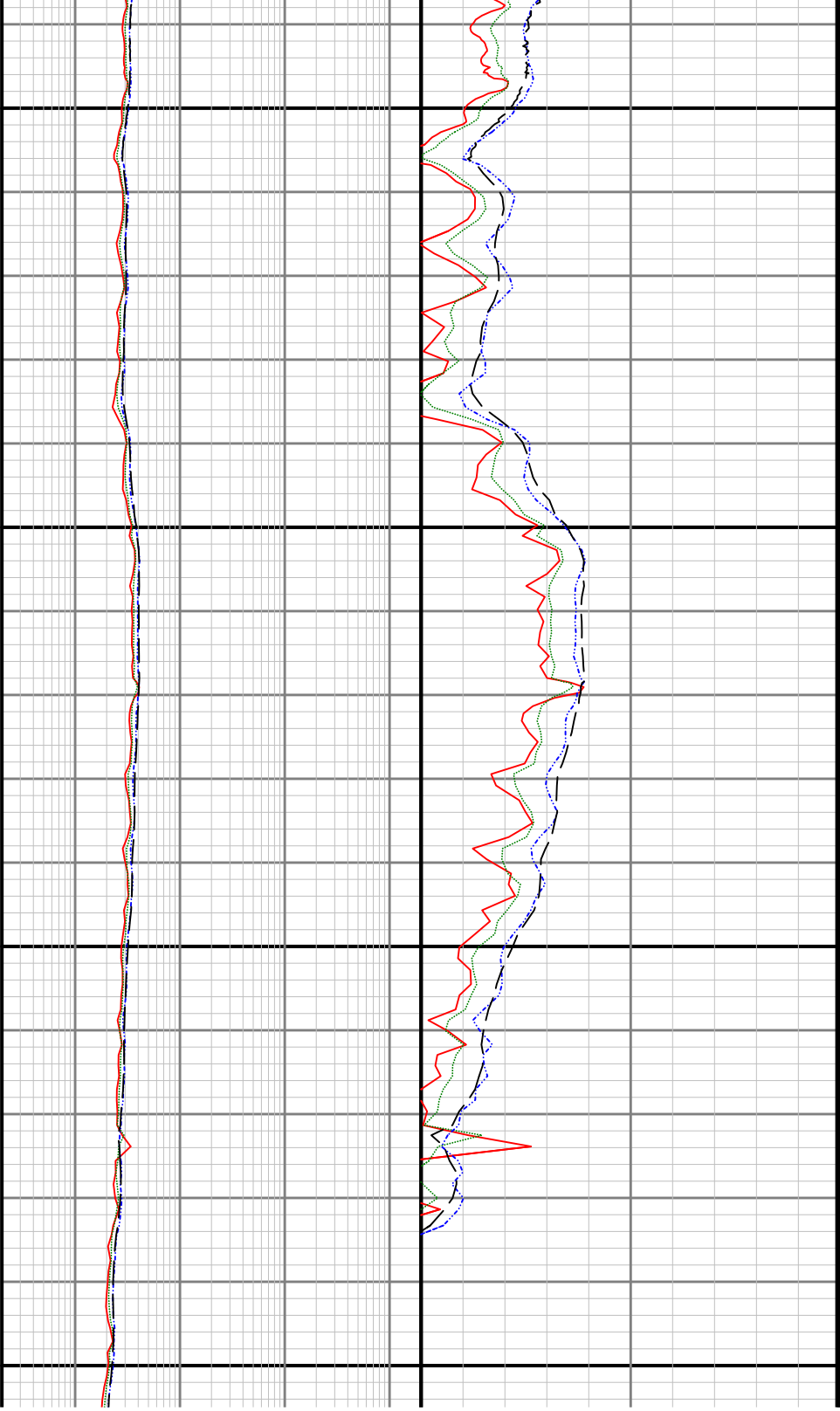






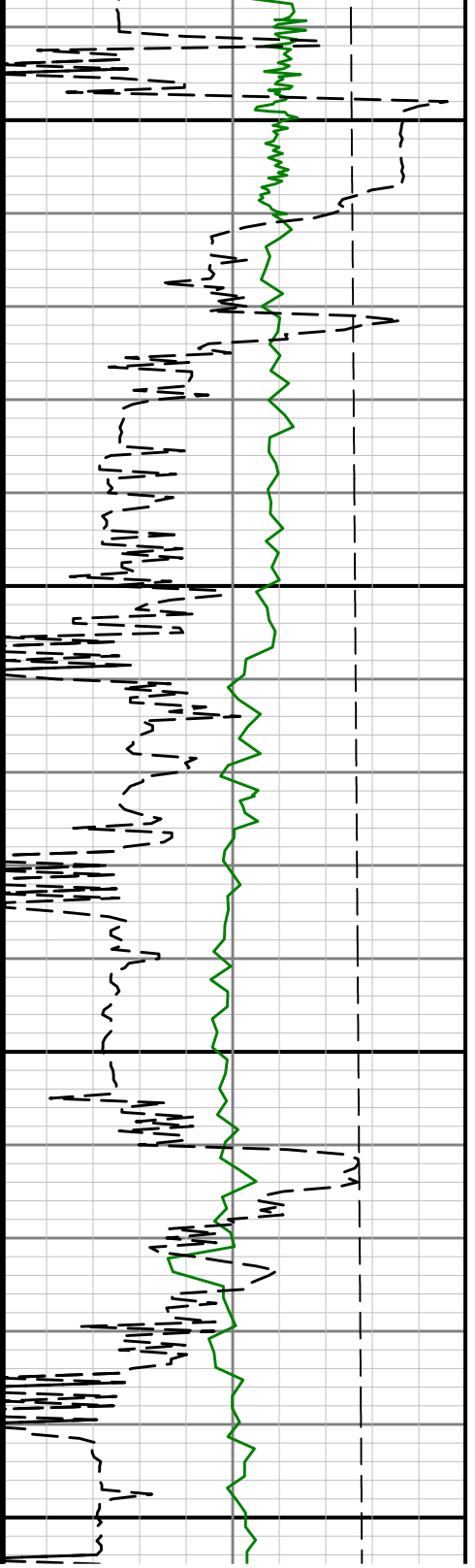
5400

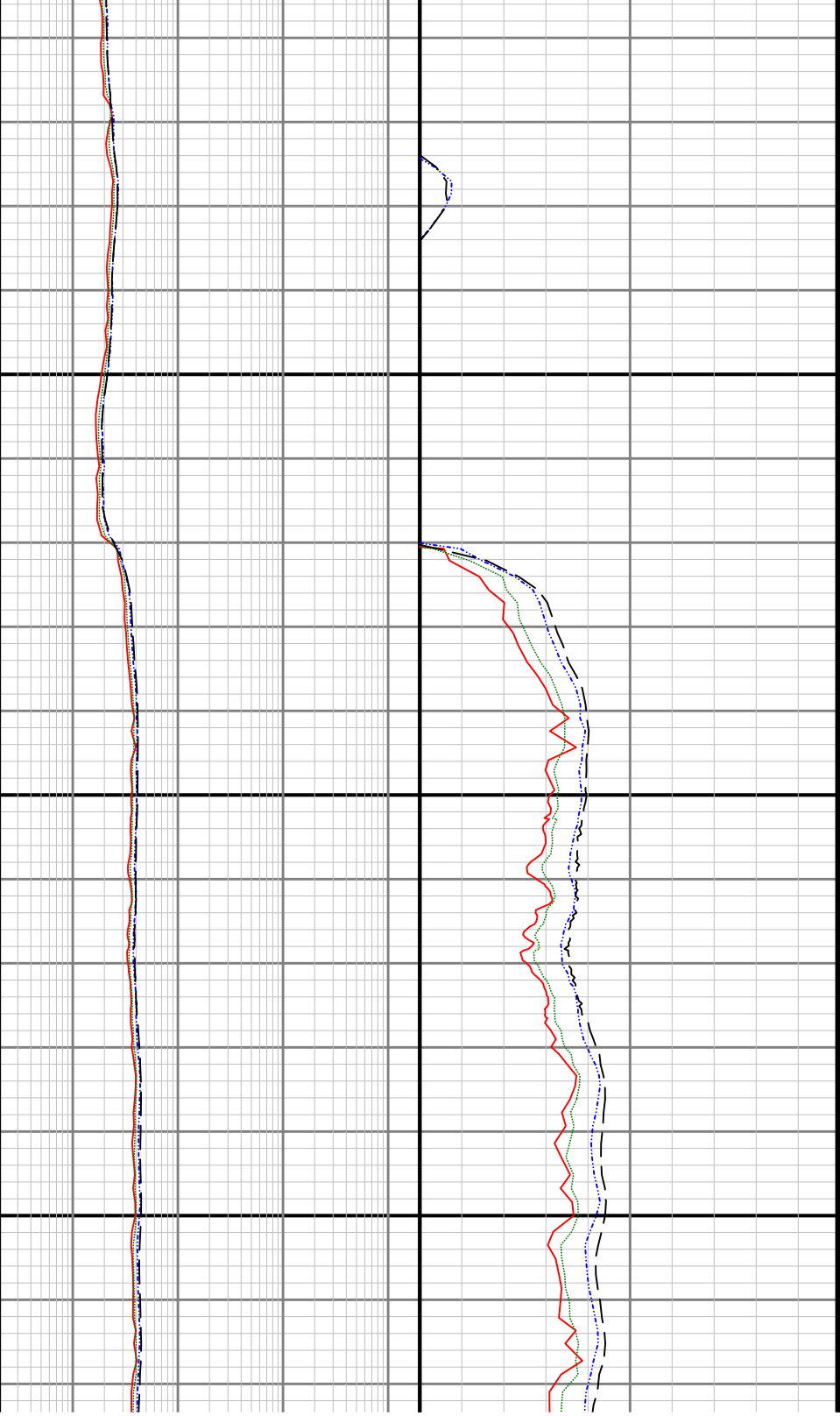




5500

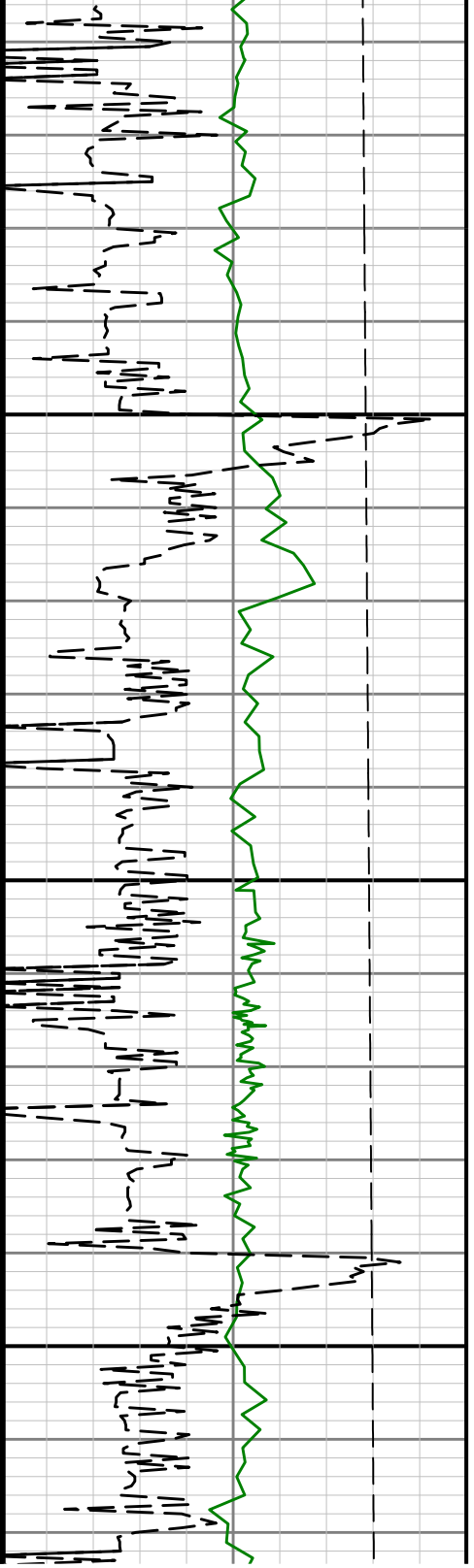
5600

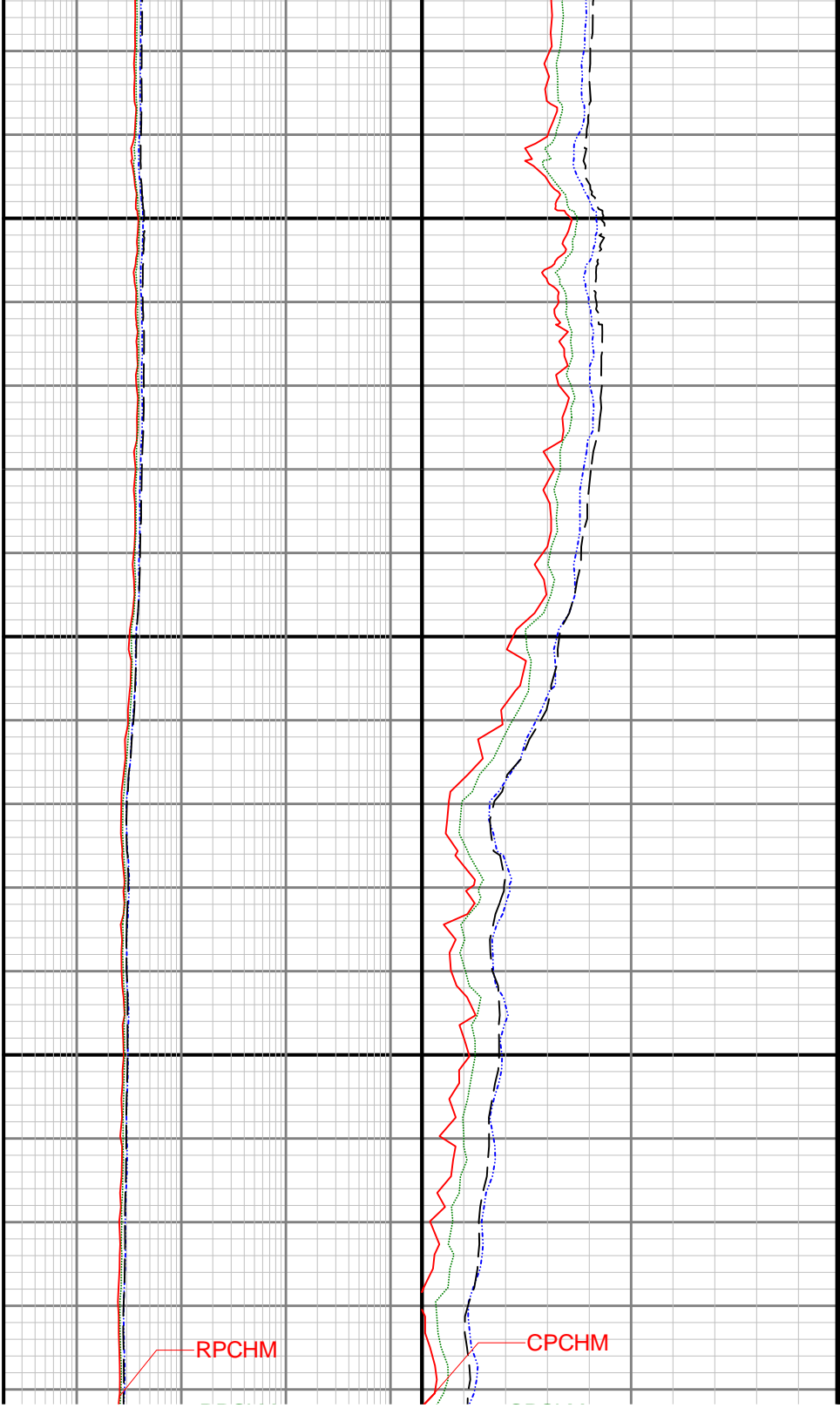




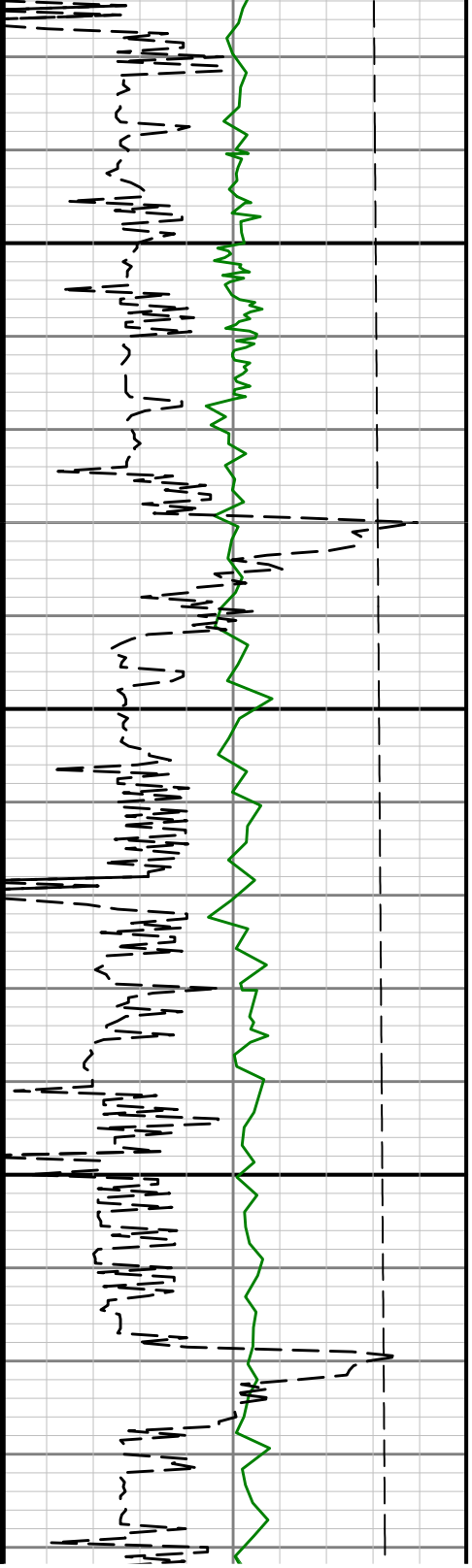
5700

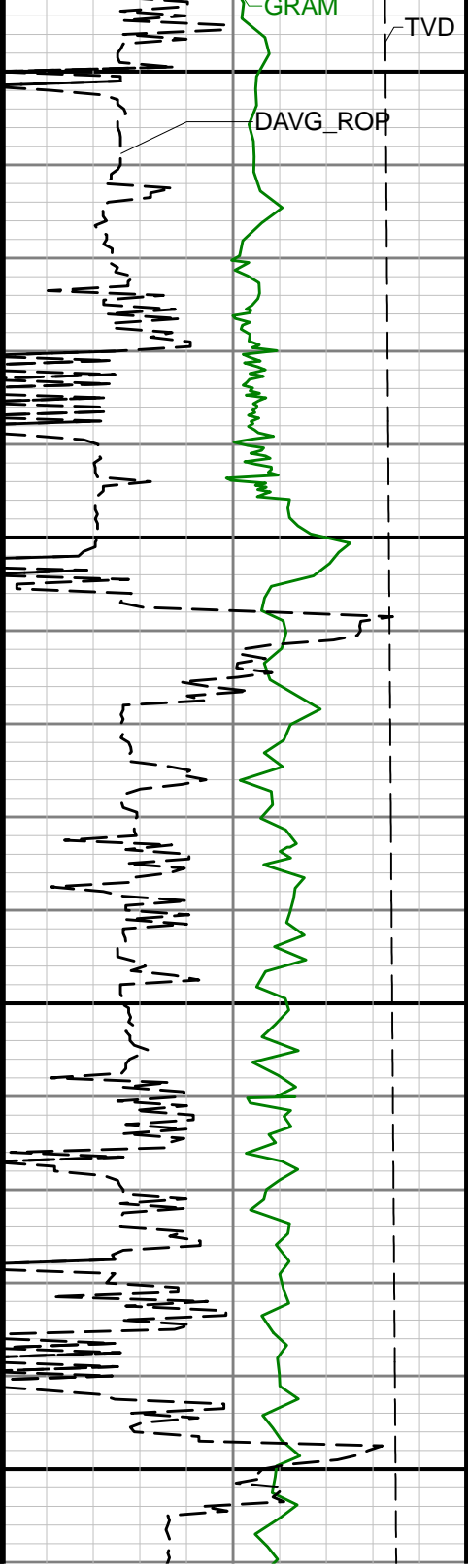
5800





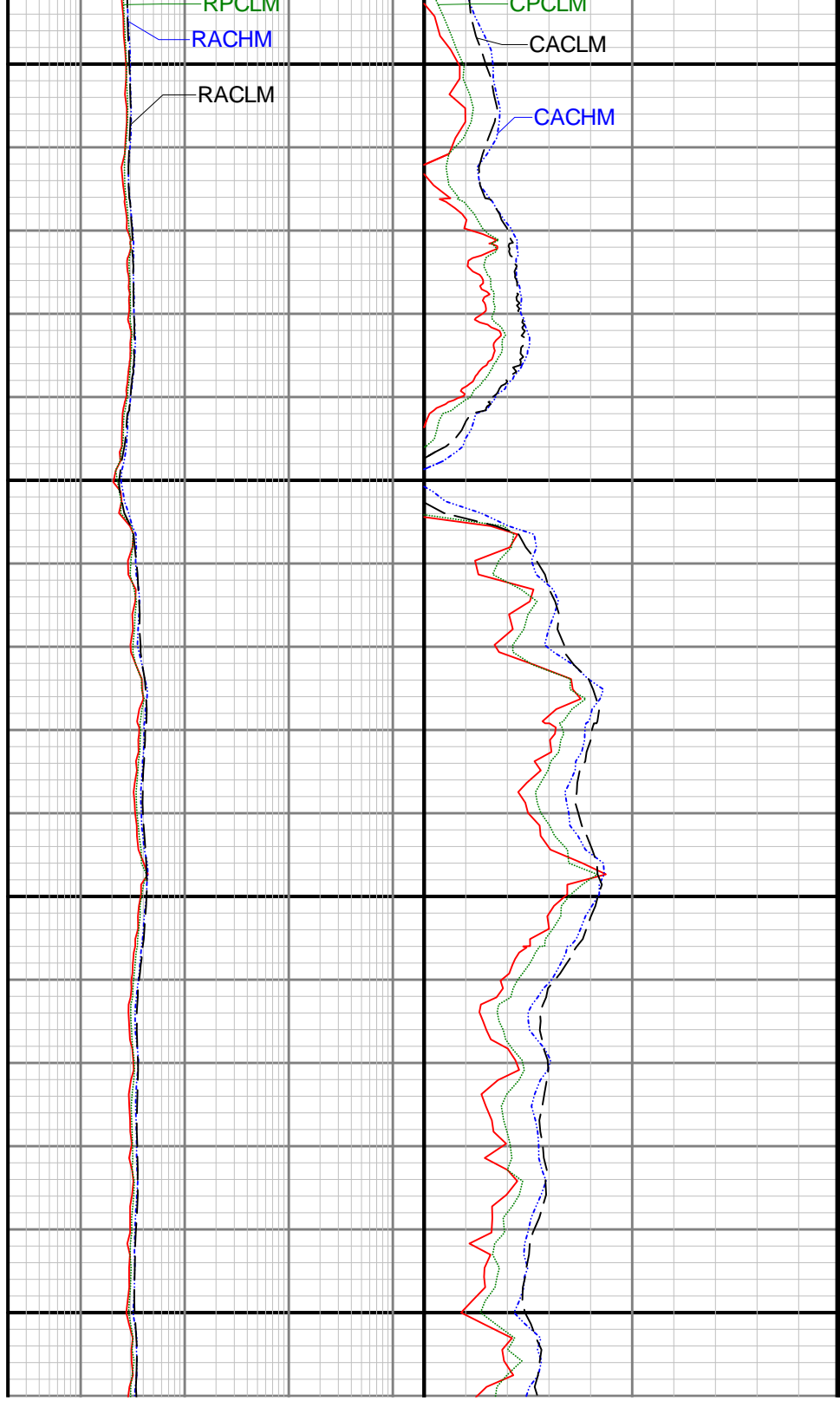
5900

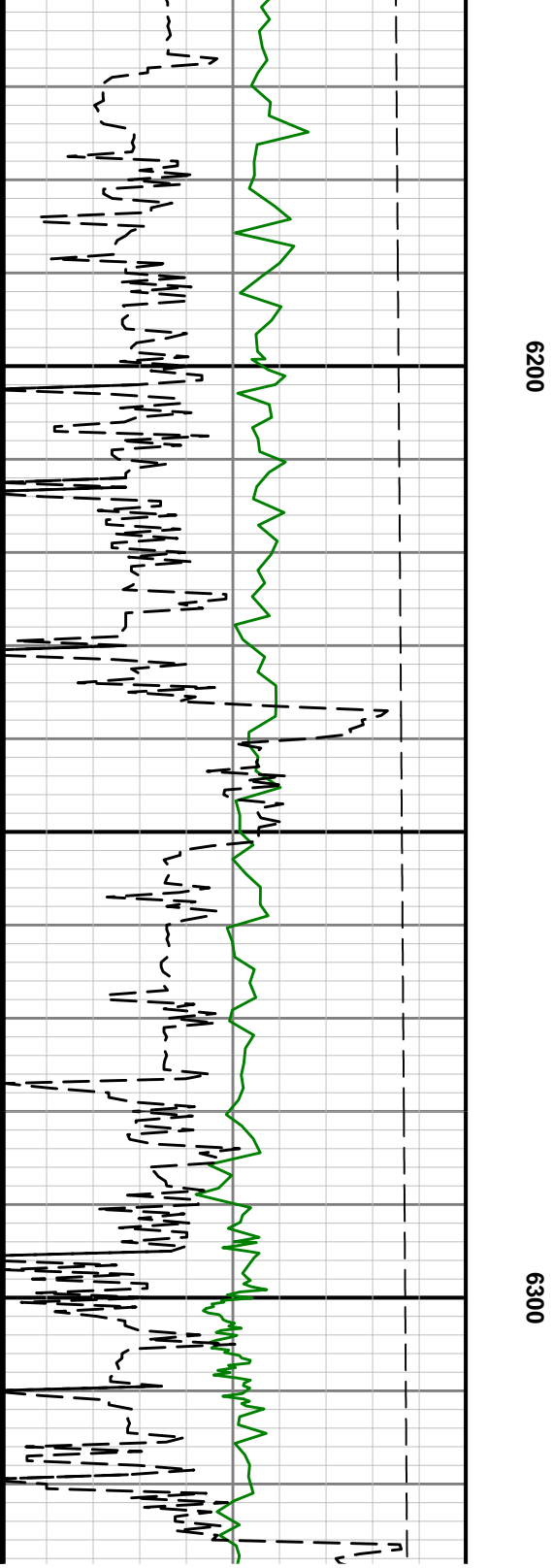
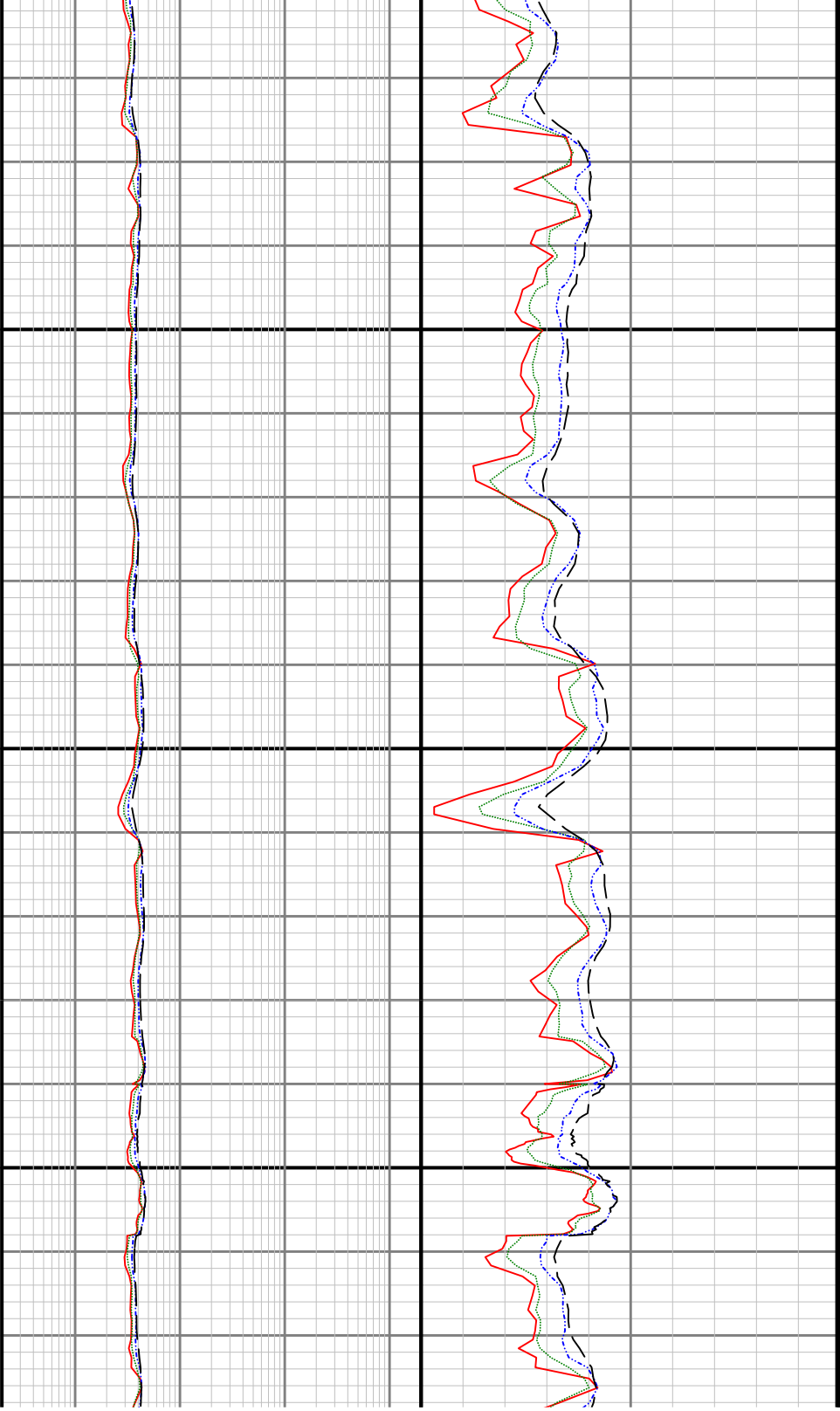


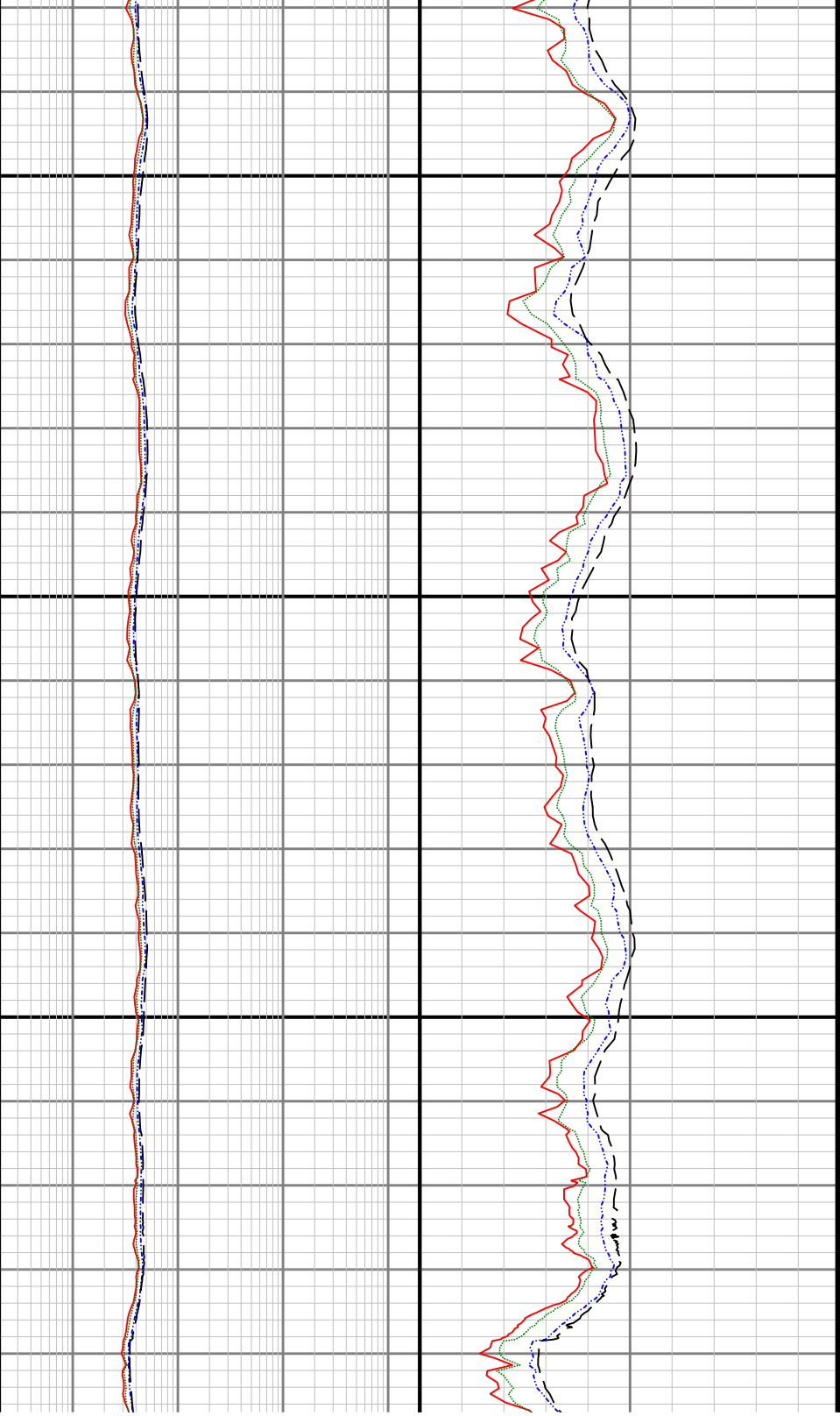


6000

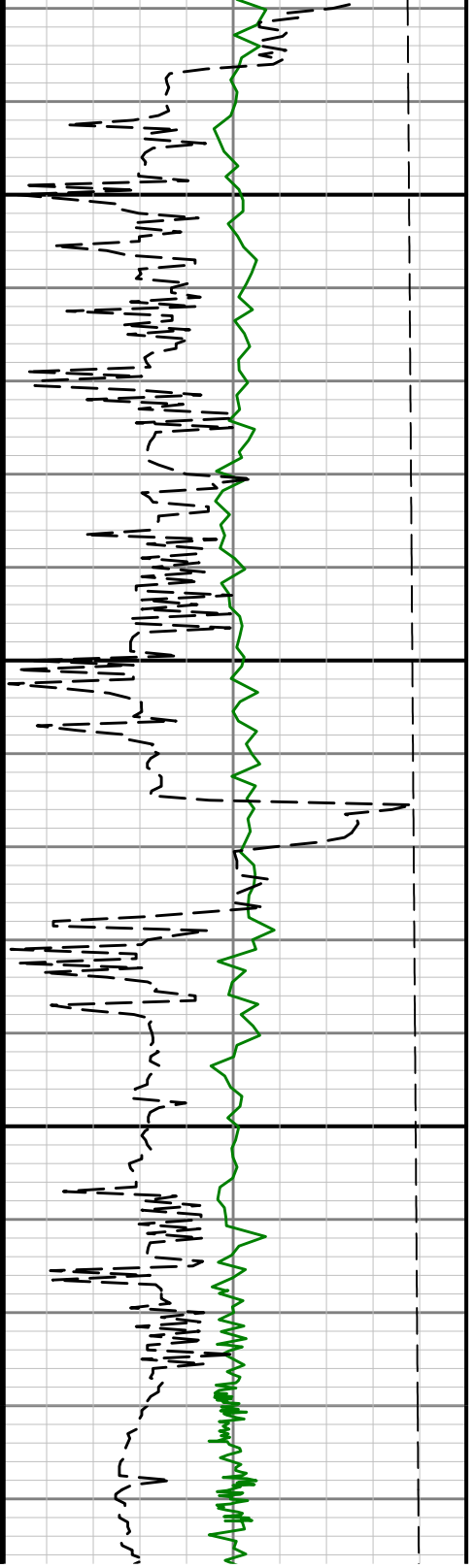
6100

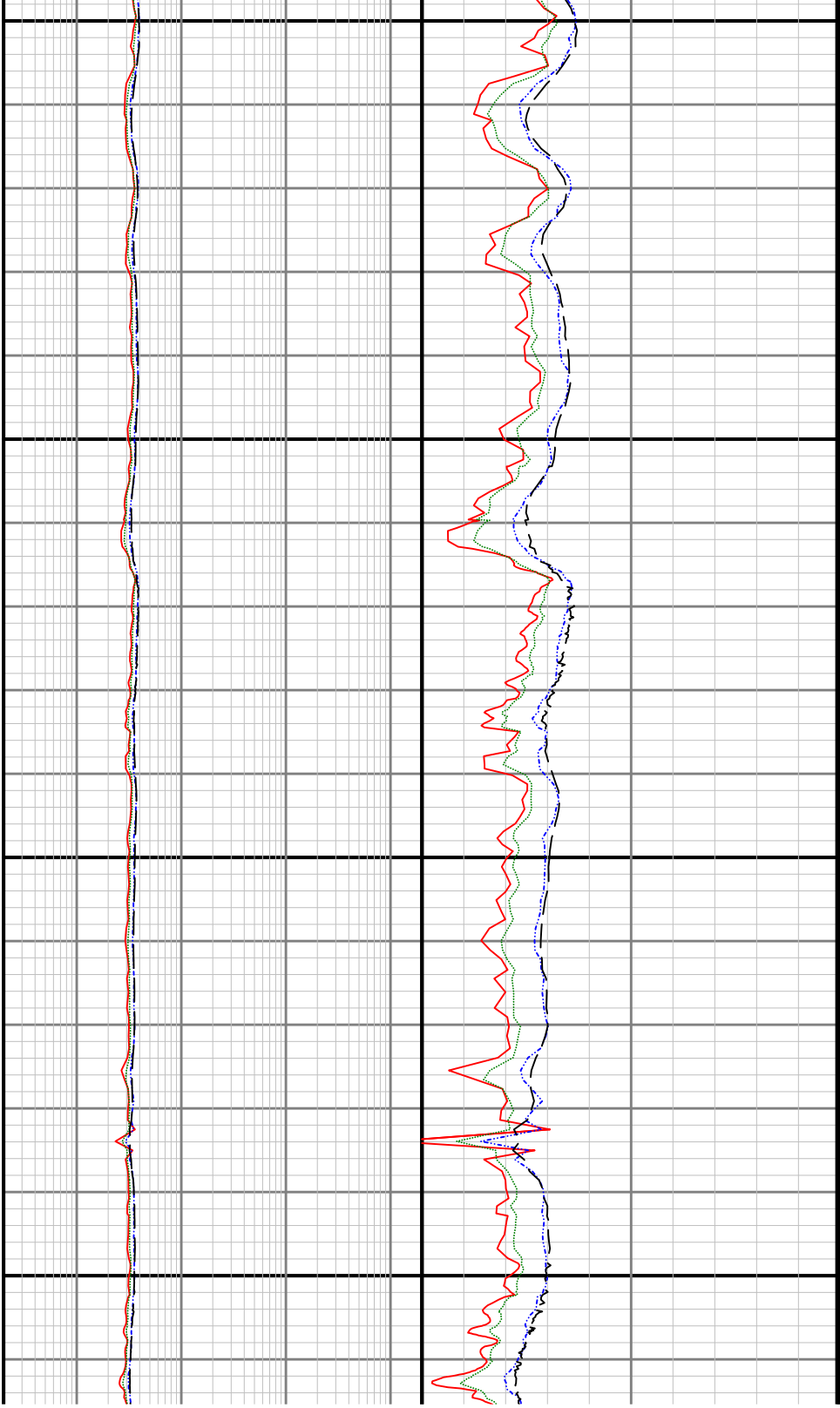






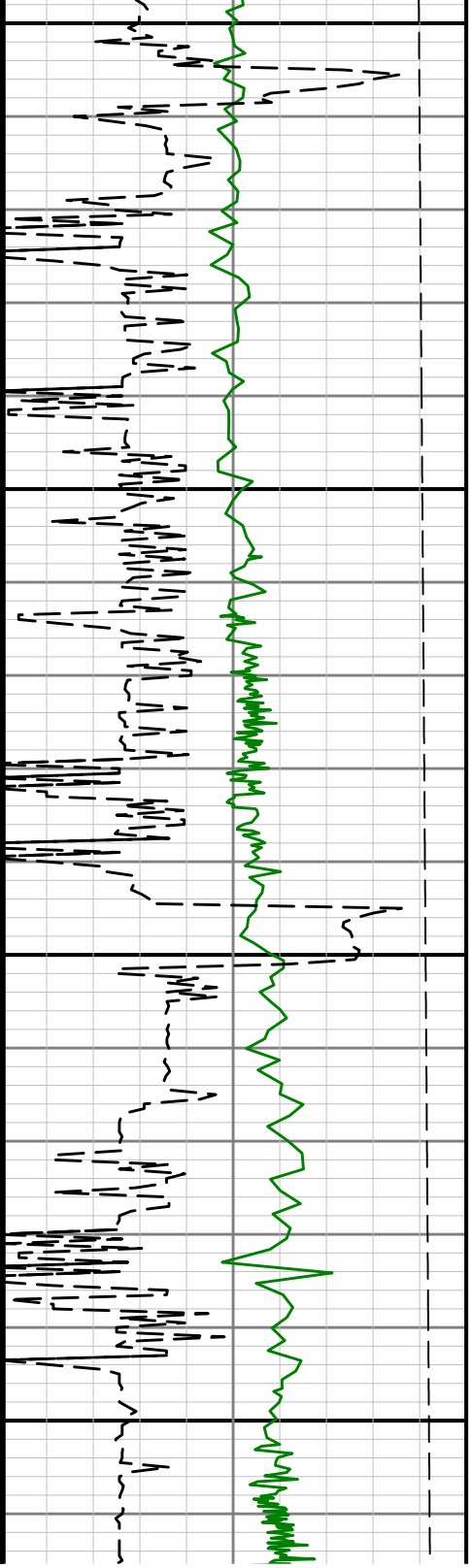
6400

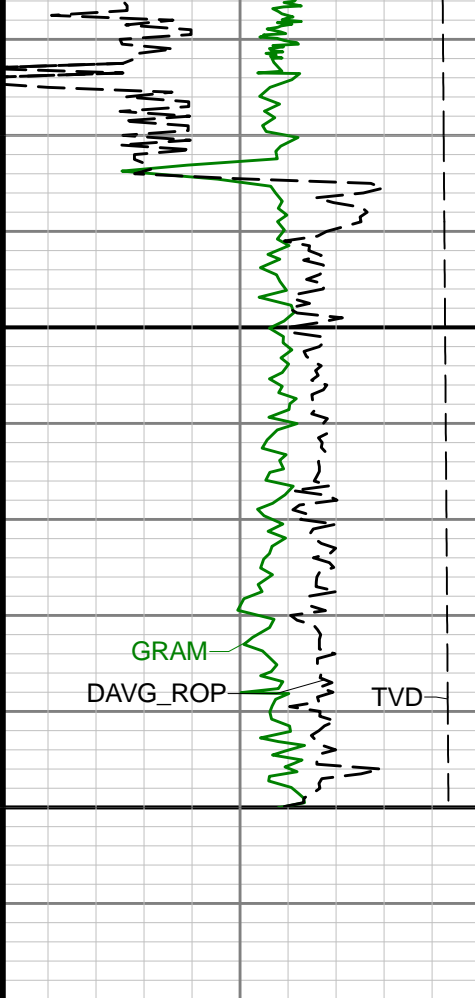




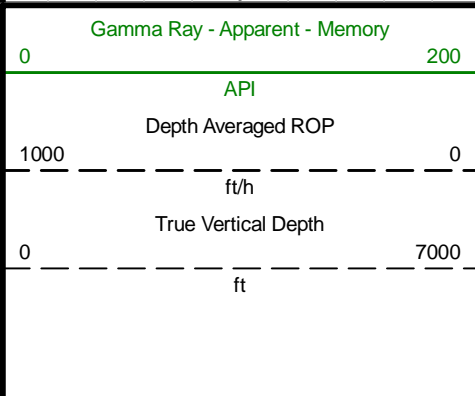
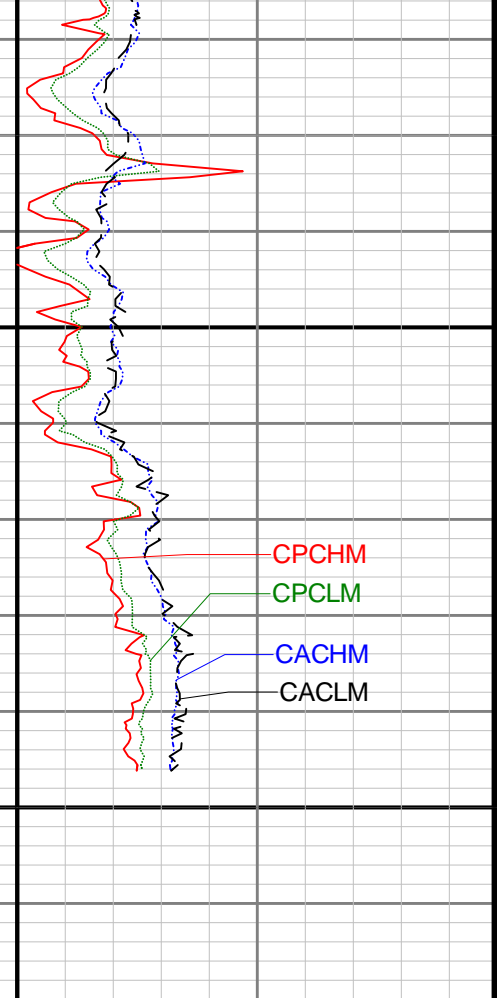
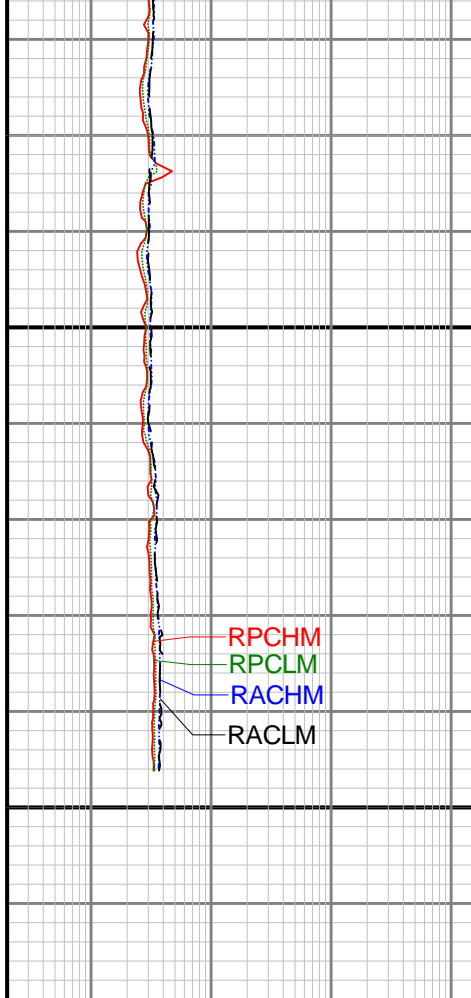
6550

6600





6700



MD 1:240 feet

