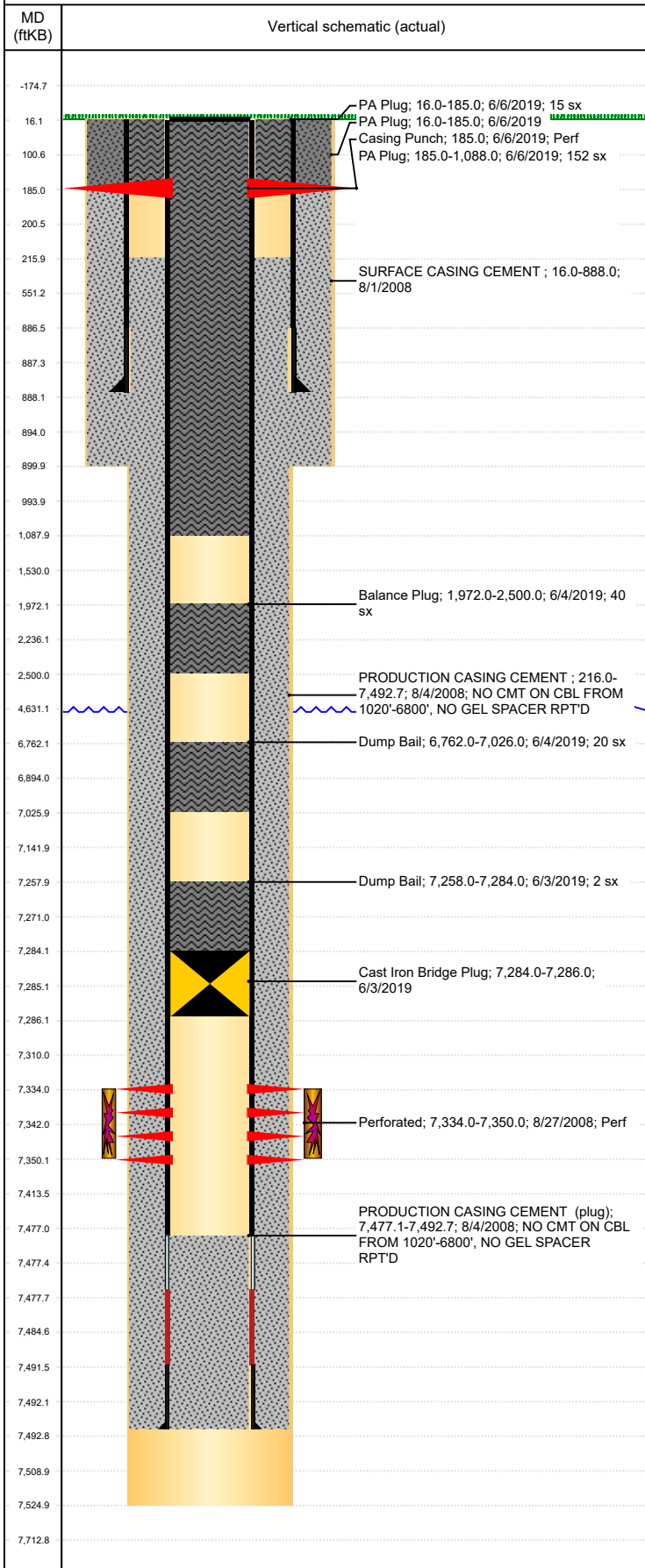


**Well Name: HKS 06-25**

VERTICAL, ORIGINAL HOLE, 6/2/2020 9:34:22 AM



Well Header									
API 05-123-26935		Business Unit DJ BASIN			District 15		Well Config VERTICAL		
KB - GL / MSL (ft... 16.00		Spud Date 7/31/2008		P & A Date 10/2/2019		Well Production Status PR			SoRT No
Comment									
Surface Location (Congressional)									
Qtr 3 SW	Qtr 4 NW	Section 6	Twonshp 6	Twonsh... N	Range 66	Rng E/... W	Actual Latitude (°) 40.51929685	Actual Longitude (°) -104.82791600	
Wellbore Sections									
Section Des			Size (in)			Act Top, MD (ftKB)		Act Btm, MD (ftKB)	
SURFACE			12 1/4			16		900	
PRODUCTION			7 7/8			900		7,525	
Casing Strings									
Csg Des		Run Date		OD (in)	Wt/Len (lb/ft)	Grade	Top, MD (ftKB)	MD (ftKB)	
Surface		8/1/2008		8 5/8	24.00	?	16.0	888.0	
Production		8/4/2008		4 1/2	11.60	M-80	16.0	7,492.7	
Cement									
Des				Start Date		Top (ftKB)		Btm (ftKB)	
SURFACE CASING CEMENT				8/1/2008		16.0		888.0	
PRODUCTION CASING CEMENT				8/4/2008		216.0		7,492.7	
Dump Bail				6/3/2019		7,258.0		7,284.0	
Dump Bail				6/4/2019		6,762.0		7,026.0	
Balance Plug				6/4/2019		1,972.0		2,500.0	
PA Plug				6/6/2019		185.0		1,088.0	
PA Plug				6/6/2019		16.0		185.0	
PA Plug				6/6/2019		16.0		185.0	
Zone Statuses									
Zone Name		Status Date	Status	Fluid Type	Job			Prod Method	
CODELL		8/3/2010	PR	Water				Flowing	
CODELL		2/8/2016	PR						
Perforation Data									
Linked Zone		Bnch/Stg	Entered Shot Total	Top (ftKB)		Btm (ftKB)		Date	
			4	185.00		185.00		6/6/2019	
CODELL, ORIGINAL HOLE			64	7,334.00		7,350.00		8/27/2008	
Stimulation Intervals									
Zone			Start Date			Top (ftKB)		Btm (ftKB)	
CODELL, ORIGINAL HOLE			8/28/2008			7,334.0		7,350.0	
Other In Hole									
Run Date		Des			Make	OD (in)	Top (ftKB)	Btm (ftKB)	
3/17/2017		Plunger Lift				1 7/8			
6/3/2019		Cast Iron Bridge Plug				3.99	7,284.0	7,286.0	
Logs									
Date		Type				Top, MD (ftKB)		Btm, MD (ftKB)	
8/4/2008		COMPENSATED DENSITY				3,650.0		7,471.0	
8/4/2008		INDUCTION				888.0		7,491.0	
8/14/2008		CBL/CCL/GR				100.0		7,438.0	
12/3/2013		GYRO				0.0		7,100.0	
Plug Back Total Depths									
Date		Type		Com				Depth (ftKB)	
2/18/2014		FILL						7,433.0	
6/7/2019		CEMENT PLUG						16.0	