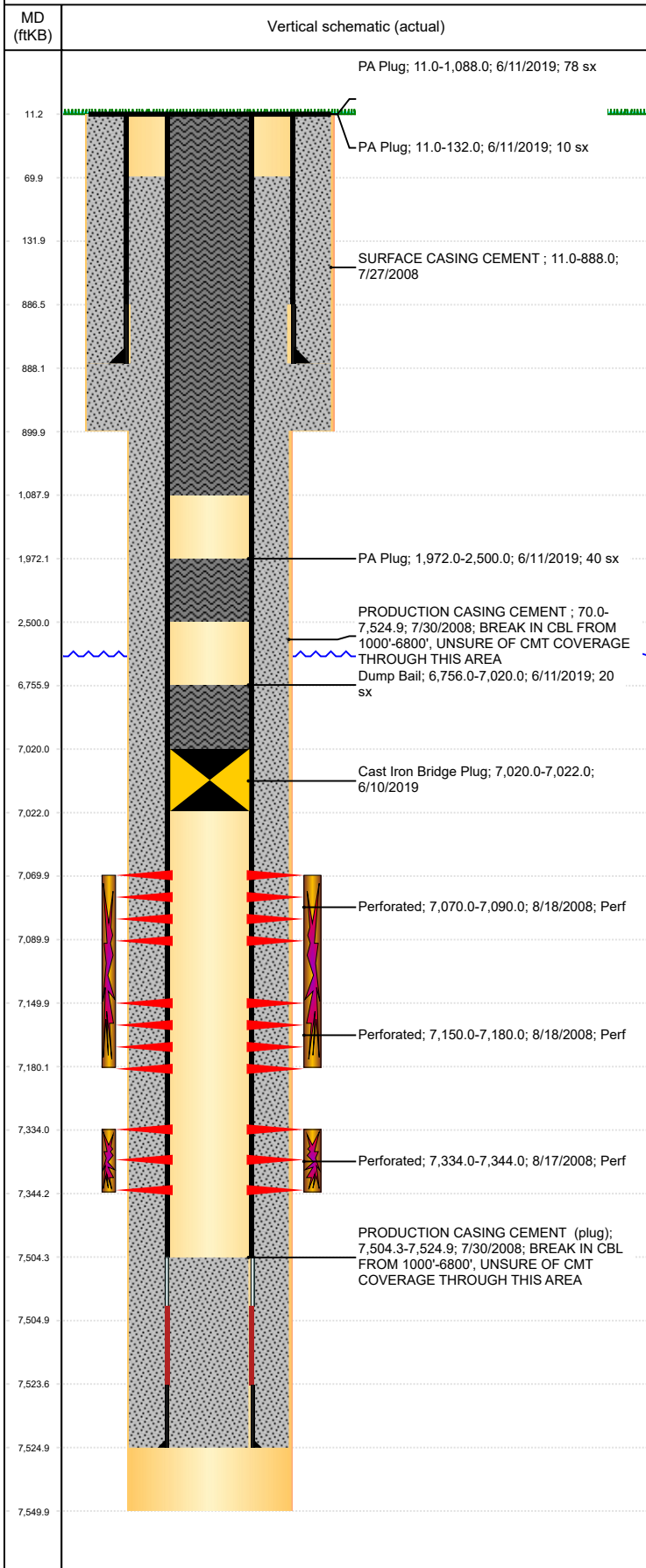


Well Name: HKS 06-23

VERTICAL, ORIGINAL HOLE, 6/2/2020 8:30:15 AM



Well Header									
API 05-123-26974		Business Unit DJ BASIN			District 15		Well Config VERTICAL		
KB - GL / MSL (ft... 11.00		Spud Date 7/26/2008		P & A Date		Well Production Status PR			SoRT No
Comment WBI WH CHANGED FOR: CECIL FARMS PC I06-67HN AFE: 141001 1-30-14									
Surface Location (Congressional)									
Qtr 3 SW	Qtr 4 NW	Section 6	Twnshp 6	Twnsh... N	Range 66	Rng E/... W	Actual Latitude (°) 40.51776000	Actual Longitude (°) -104.82858000	
Wellbore Sections									
Section Des			Size (in)			Act Top, MD (ftKB)		Act Btm, MD (ftKB)	
SURFACE			12 1/4			11		900	
PRODUCTION			7 7/8			900		7,550	
Casing Strings									
Csg Des		Run Date		OD (in)	Wt/Len (lb/ft)	Grade	Top, MD (ftKB)	MD (ftKB)	
Surface		7/27/2008		8 5/8	24.00	?	11.0	888.0	
Production		7/30/2008		4 1/2	11.60	M-80	11.0	7,524.9	
Cement									
Des				Start Date		Top (ftKB)		Btm (ftKB)	
SURFACE CASING CEMENT				7/27/2008		11.0		888.0	
PRODUCTION CASING CEMENT				7/30/2008		70.0		7,524.9	
Dump Bail				6/11/2019		6,756.0		7,020.0	
PA Plug				6/11/2019		1,972.0		2,500.0	
PA Plug				6/11/2019		11.0		1,088.0	
PA Plug				6/11/2019		11.0		132.0	
Zone Statuses									
Zone Name		Status Date	Status	Fluid Type	Job			Prod Method	
CODELL		3/1/2011	PR	Water	DRILLING/COMPLETION - ORIGINAL, 7/26/2008...			Flowing	
CODELL		2/8/2016	PR						
NIOBRARA		9/9/2008	PR						
NIOBRARA		3/1/2011	PR	Water				Flowing	
Perforation Data									
Linked Zone		Bnch/Stg	Entered Shot Total	Top (ftKB)		Btm (ftKB)		Date	
NIOBRARA, ORIGINAL HOLE		A	240	7,070.00		7,090.00		8/18/2008	
NIOBRARA, ORIGINAL HOLE		B	200	7,150.00		7,180.00		8/18/2008	
CODELL, ORIGINAL HOLE			40	7,334.00		7,344.00		8/17/2008	
Stimulation Intervals									
Zone				Start Date		Top (ftKB)		Btm (ftKB)	
NIOBRARA, ORIGINAL HOLE				8/18/2008		7,070.0		7,180.0	
CODELL, ORIGINAL HOLE				8/18/2008		7,334.0		7,344.0	
Other In Hole									
Run Date		Des			Make		OD (in)	Top (ftKB)	Btm (ftKB)
3/3/2016		Plunger Lift					1 7/8		
6/10/2019		Cast Iron Bridge Plug					4	7,020.0	7,022.0
Logs									
Date		Type				Top, MD (ftKB)		Btm, MD (ftKB)	
7/30/2008		COMPENSATED DENSITY				3,640.0		7,528.0	
7/30/2008		INDUCTION				888.0		7,548.0	
8/14/2008		CBL/CCL/GR				50.0		7,472.0	
12/20/2018		GYRO				11.0		6,900.0	
Plug Back Total Depths									
Date		Type		Com				Depth (ftKB)	
9/23/2008		PLUG REMNANTS		CLEAN OUT AND DRILL OUT CIBP TO 7487'				7,487.0	
6/11/2019		CEMENT PLUG		PA				11.0	