



## COLORADO

Oil & Gas Conservation  
Commission

Department of Natural Resources

1120 Lincoln Street, Suite 801  
Denver, CO 80203

August 31, 2018

Noble Energy, Inc.  
Attn: RJ Moses, Operations Manager  
1625 Broadway  
Suite 2200  
Denver, CO 80202

Re: Noble Energy's Proposed Alternative Mechanical Integrity Assurance Program.

Dear Mr. Moses,

Thank you for submitting Noble Energy, Inc.'s Request for Approval of Proposed Alternative Mechanical Integrity Assurance Program ("Alternative Program"), pursuant to COGCC Rule 326, and for taking the time to work through the Alternative Program process with the COGCC. COGCC recognizes the difficulties presented by Noble shutting-in a large number of wells pursuant to the 2015 consent decree with the U.S. Environmental Protection Agency and the Colorado Department of Public Health and Environment. COGCC appreciates Noble's efforts to find an alternative mechanism to meet the needs of Rule 326, while faced with the challenges presented by the large number of shut-in wells.

As you are aware, COGCC Rules 326.b. and c. permit the Director to approve an "equivalent test or combination of tests" *in lieu* of the standard mechanical integrity test specified in Rule 326. COGCC has reviewed Noble's Alternative Program and believes that it represents an acceptable alternative combination of tests which satisfies the requirements of Rule 326 while upholding the basic intent of the Oil and Gas Conservation Act. A copy of Noble's Alternative Program is attached to this letter as Attachment 1, including Appendix 2 which is a list of the wells included within the Alternative Program as of August 29, 2018. Recognizing the Alternative Program contemplates a dynamic list of wells, the list of wells on Appendix 2 will change and be the subject of on-going revisions.

This letter serves as Director approval of Noble's Alternative Program, pursuant to COGCC Rules 326.b. and c., with a few clarifications. First, Noble will adhere to the action deadlines identified in the flowchart. Second, Noble will submit a Form 27 within thirty days of Noble identifying a suspected loss of mechanical integrity. Third, if Noble and the COGCC Engineering Manager agree, Noble and COGCC may meet more or less frequently than quarterly. Fourth, Noble will physically mark or identify wells subject to the Alternative Program in the field.

P 303.894.2100 F 303.894.2109 [www.colorado.gov/cogcc](http://www.colorado.gov/cogcc)

Commissioners: John H. Benton - Chair, Howard Boigon - Co-Vice Chair, Tommy Holton - Co-Vice Chair,  
Ashley L. Ager, James W. Hawkins, Kent Jolley, Erin A. Overturf, Robert W. Randall, Dr. Larry Wolk  
John W. Hickenlooper, Governor | Robert W. Randall, Executive Director, DNR | Julie Murphy, Director



Mr. RJ Moses  
August 31, 2018  
Page 2

Approval of the Alternative Program is effective for each well as of the date Noble implemented the Alternative Program at the particular well. Until Noble implemented the Alternative Program at a well, the well was subject to the MIT requirements set forth in Rule 326. The approval granted herein is contingent upon Noble's diligent and on-going implementation of the Alternative Program at a well. In the event the Director identifies material deficiencies with Noble's implementation of the Alternative Program, the Director reserves the right to revoke this approval, in whole or in part, by providing to Noble notice of such deficiencies.

Sincerely,



Julie Murphy, Director

1625 Broadway  
Suite 2200  
Denver, CO 80202  
Tel: 303.228.4000  
Fax: 303.228.4280  
[www.nobleenergyinc.com](http://www.nobleenergyinc.com)



August 29, 2018

**Via Email Delivery**

Ms. Julie Murphy  
Colorado Oil and Gas Conservation Commission  
1120 Lincoln Street, Suite 801  
Denver, CO 80203  
[Julie.Murphy@state.co.us](mailto:Julie.Murphy@state.co.us)

Re: Noble Energy's Request for Approval of Proposed Alternative Mechanical Integrity Assurance Program, pursuant to COGCC Rule 326.

Dear Ms. Murphy:

Thank you and your colleagues at COGCC for meeting with us last week to continue a discussion regarding Noble's proposed Alternative Mechanical Integrity Assurance Program (Program) and related activities. As discussed, Noble is respectfully requesting the COGCC to approve this program as "an equivalent test or combination of tests" to satisfy Rule 326 for those Noble wells that are temporarily shut in primarily to comply with the 2015 Consent Decree ("CD") between the United States, the State of Colorado, and Noble Energy.<sup>1</sup>

As discussed, Noble's proposed Program offers a novel, transparent and environmentally protective method for managing risk associated with the highly unusual situation we face as a result of the CD requirements. More specifically, the CD required Noble to evaluate DJ Basin tank systems by July 2017 (which we have completed) for adequate sizing and design; and to make necessary modifications to reduce emissions by an established schedule. We also have the option of plugging and abandoning the wells associated with Noble's DJ Basin tank systems. The CD establishes that Well Production Operations consist of surface operations that produce condensate and natural gas from a well; but shall not include maintenance activities. Once temporarily shut-in, Well Production Operations can resume for a limited period of time to complete the evaluation and/or complete necessary modifications. Absent an evaluation's conclusion that modifications are not required or confirmation that necessary modifications were complete, Well Production Operations cannot occur.

In short, Noble's efforts to comply with the CD have resulted in our having to temporarily shut in several hundred wells while we determine whether to modify the associated tank systems,

---

<sup>1</sup> Civil Action No. 1:15-cv-00841-RBJ, entered by the U.S. District Court of Colorado as final judgment on June 2, 2015,

or plug and abandon the wells. Additionally, where plugging and abandoning a well appears to be the preferred approach, our Land Department must determine whether the well is needed to hold the associated lease. Ultimately, our goal is to, as soon as possible, complete all these evaluations and either: 1) remove associated surface facilities in preparation for plug and abandonment; or 2) upgrade the facilities and bring the well back on line.

Noble has developed this comprehensive alternative program to reflect and respond to the complexity and uniqueness of this situation. The Alternative Program is presented in

**Appendix 1.** This document includes both a narrative of the Program and attached flow chart that provides a visual complement to it.

**Appendix 2** presents the scope of this Alternative Program and should be considered an evergreen document: once this request is approved, Noble will update the Program regularly, present to COGCC in an annual report, and discuss during quarterly meetings (see below for discussion on documentation, reporting and recordkeeping). More specifically, it will present the wells within the scope of this Program, their name and location, when the well was shut in (within a two-month time frame, in cases where we don't have the exact shut in date), the MIT due date, whether a leasehold review has been completed and the well's status within the Program. Notably, the information in this table conservatively assumes that in some cases we plan to conduct MITs on wells prior to their due date. Additionally, in some cases we assume that the date of last production is earlier than the shut in date, thereby triggering an earlier 2 year MIT requirement.

Noble's proposed approach complements several actions we have already taken to mitigate potential environmental risk. They include running approximately 15 workover rigs that are plugging and abandoning wells; to date, that effort has resulted in plugging and abandoning approximately 305 wells in 2018. You will also note upon review of Appendix 2 that Noble already has begun implementation of the Program for some wells, recognizing it would take time to complete the extensive evaluation pursuant to the CD.

Including these wells in the Program ensures its comprehensiveness and represents a transparent method for predicting when wells are expected either to be plugged and abandoned or returned to production. Additionally, once the wells within this Program scope are either plugged and abandoned, or returned to production this program will sunset.

As for Program documentation, monitoring and recordkeeping, Noble will:

1. Monitor the bradenhead pressure for each long term shut in wells within the scope of this Program twice per year. This data will be documented in the database we currently use for maintenance activities including our activities to comply with the newly developed Alternative Program which the COGCC has reviewed and approved. The bradenhead

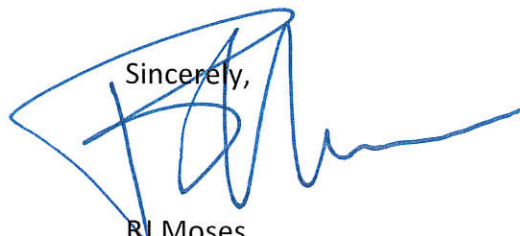


pressure survey team will input the pressures into the database, which will calculate any pressure difference from survey to survey.

2. Submit to COGCC an annual report that includes a narrative of program status focusing on an updated version of Appendix 2.
3. As requested by COGCC staff, participate in quarterly in person meetings with COGCC to discuss Appendix 2 status and any related progress and activity associated with this Program (please note again that this document will be an “evergreen document”).
4. Use Appendix 2 to capture whether a well has an increase in pressure and whether it is determined that additional verification and potential Form 17 and/or MIT tests (per COGCC rules and operator guidance documents) are required. In such cases, Noble will provide the required forms for each of these tests to the COGCC. The COGCC will have the documentation of the change in status of these wells via routine Form submittals.

Please note that this correspondence and associated attachments contain information that Noble considers to be confidential commercial information pursuant to C.R.S. 24-72-204 and C.R.S. 25-7-111(4). Accordingly, Noble asserts a claim of confidentiality for that certain information provided and has marked it as confidential with a stamp noting “CONFIDENTIAL BUSINESS INFORMATION”. Noble provides this information marked as confidential on the condition that it not be disclosed publicly pursuant to the Colorado Open Records Act or any other authority.

Please contact me after you have reviewed this material so that we can assemble the team to come over and answer any questions you might have. We are eager to reach an agreed upon path forward for this unique situation. Thanks again for your time and patience.

Sincerely,  
  
RJ Moses  
Operations Manager  
Noble Energy, Inc.

Enclosures

cc: Jeremy Ferrin, COGCC

## Appendix 1

### **Noble Energy's Alternative Mechanical Integrity Assurance Program**

#### **Narrative to Accompany Program Flow Chart**

**August 29, 2018**

This Alternative Mechanical Integrity Assurance Program (the "Program") represents an alternative method for complying with the COGCC Rule 326 MIT requirements for shut-in and temporarily abandoned wells listed in Appendix 2. The Program scope includes Noble Energy wells shut in due primarily to Noble's 2015 Consent Decree<sup>1</sup> and is designed to sunset once the Appendix 2 wells have been removed from shut-in status. The 222 wells listed in bold in Appendix 2 will either be returned to production or plugged and abandoned (P&A'd) no later than December 31, 2019. Additionally, each Appendix 2 well, whether producing or not, is considered part of this Program. A key Program element consists of conducting bradenhead pressure surveys in the spring and the fall each year at every Appendix 2 well. The bradenhead survey itself is a formal recording and evaluation of the bradenhead pressure. The Program also includes an annual report to COGCC and, quarterly in-person meetings to discuss Program status and next steps. Finally, the Program does not replace any other applicable COGCC regulations. Program steps are as follows:

**Step 1:** Noble conducts bradenhead surveys on all shut-in wells within the Program scope twice per year (spring and fall) and records results in Noble's database of record.

- a. If bradenhead pressure is below maximum allowable annular surface pressure (MAASP) or 25 psi,<sup>2</sup> the well will continue to be monitored every 6 months.
- b. If pressure is above the MAASP or 25 psi, Noble will validate the survey and move to step 2.

Noble developed MAASP using a gradient method after confirming California, Pennsylvania and Texas use similar methods. Noble defines MAASP as the "maximum surface pressure that the surface casing shoe and formation can experience without breaking down". Noble determines MAASP by using the pressure at the surface Bradenhead (annulus between production casing and surface casing) and the calculated hydrostatic pressure of a column of water (depth from surface to casing shoe). Noble also uses historical formation integrity test (FIT) and leak off test to determine the gradient (0.95 psi/foot) at which these shallow zones break down. Noble uses 0.7 psi/foot as maximum allowable pressure gradient which includes a ~35% safety factor. The following is an example of the MAASP application:

1. Surface casing set at depth of 345 feet;
2. Maximum pressure at surface casing depth =  $.7 \text{ psi/ft} * 345 \text{ ft} = 241.5 \text{ psi}$ ;
3. Hydrostatic pressure of a column of water =  $0.433 \text{ psi/ft} * 345 \text{ ft} = 149.4 \text{ psi}$
4. The MAASP =  $241.5 \text{ psi} - 149.4 \text{ psi} = 92.1 \text{ psi}$

---

<sup>1</sup> The Consent Decree is between the United States, the State of Colorado, and Noble Energy, Civil Action No. 1:15-cv-00841-RBJ, entered by the U.S. District Court as a final judgement on June 2, 2015.

<sup>2</sup> Noble and COGCC staff agreed to a 25 psi threshold for purposes of identifying wells that merited further study.

**Step 2:** Noble performs a wellbore compliance verification in accordance with the COGCC Interim Statewide Horizontal Offset Policy, dated February 10, 2014, which will also include, but not be limited to, reviewing the surface casing depth, cement tops, casing condition, zonal isolation, casing squeezes, etc.

- a. If the wellbore is in compliance with the offset policy, then Noble will complete and submit a Form 17.<sup>3</sup>
- b. If the wellbore is not in compliance with the offset policy, then Noble will complete an MIT and submit the required COGCC Form 21.
  1. If the MIT is not successful then the well will become a priority P&A well and Noble will schedule it to be P&Ad and submit a Form 6.
    - i. If, during the P&A a mechanical integrity loss is suspected, Noble will initiate a site investigation and submit a Form 27.
  2. If the MIT is successful then Noble will complete and submit a Bradenhead Form 17 and move to step 3.

**Step 3:** Subsequent to the Form 17 submittal, and as part of the bradenhead survey, Noble will monitor the bradenhead pressure for 7 days.

- a. If the bradenhead pressure is below MAASP or 25 psi after the 7 days, Noble will return the well to the bradenhead survey program (every 6 months).
- b. If the bradenhead pressure is equal to or above MAASP or 25 psi any time during the 7 days, Noble will install a bradenhead transducer to monitor real time bradenhead pressures (see Step 4).

**Step 4:** Where warranted, based on Step 3, Noble will install a transducer on the bradenhead and complete and submit a second Bradenhead Form 17 to verify pressure build.

**Step 5:** Subsequent to filing the second Form 17, Noble will monitor bradenhead pressure for an additional 7 days.

- a. If pressure is below MAASP or 25 psi after the 7 days, Noble will enter the well into real time bradenhead pressure monitoring program with control room active alarms.
- c. If pressure is equal to or above MAASP or 25 psi any time during the 7 days, Noble will complete an MIT and submit the required COGCC form.

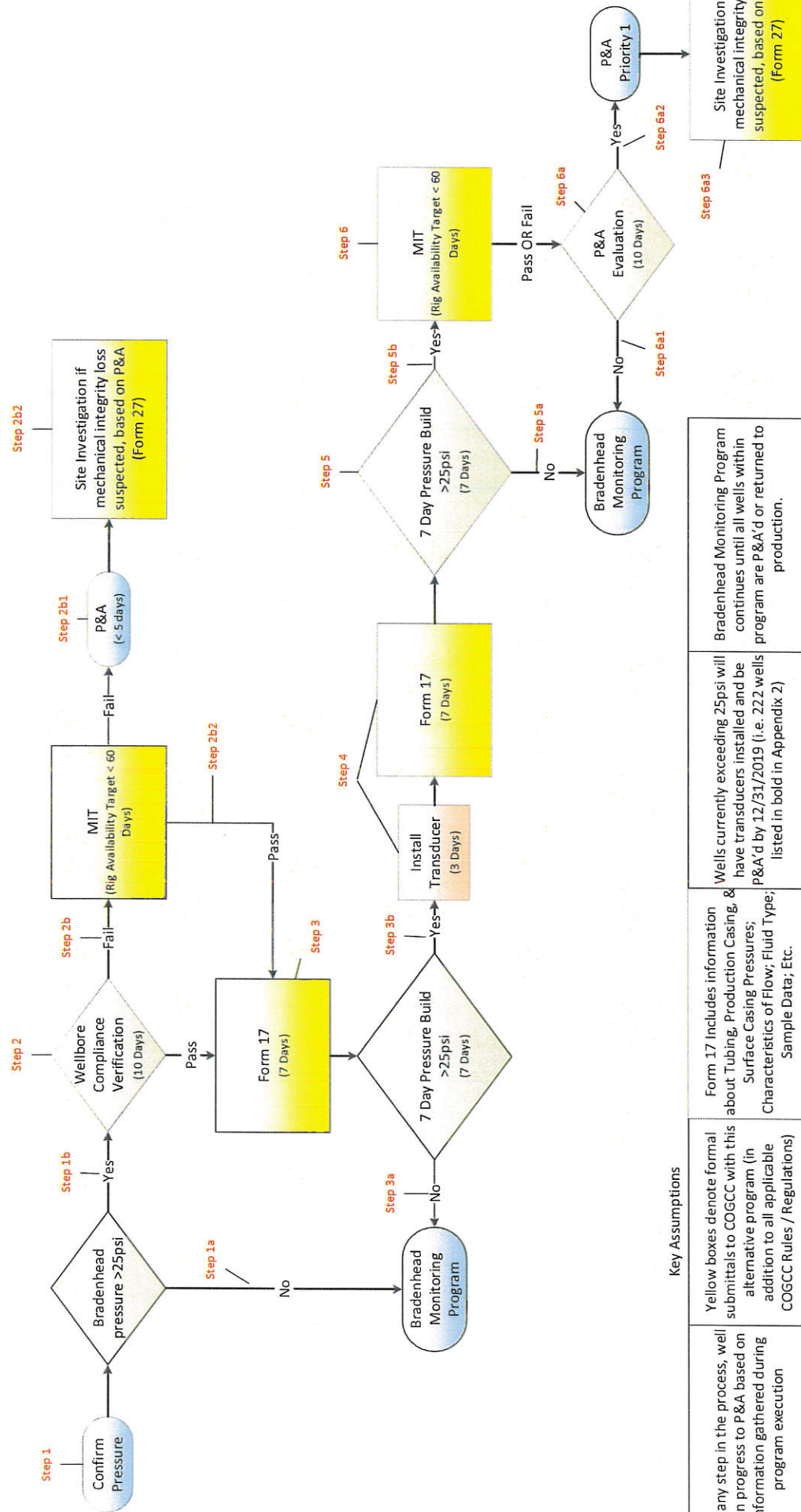
---

<sup>3</sup> Form 17 includes information about tubing, production casing and surface casing pressures, flow characteristics, fluid type, sample data, etc.

**Step 6:** Regardless of the outcome of the MIT:

- a. Noble will evaluate the well for P&A (Form 6):
  1. If, during the evaluation, the well is determined to have strategic value (leasehold), Noble will take corrective action to repair the wellbore. In this case, Noble will continue to keep the well in the real-time bradenhead pressure monitoring program with control room active alarms.
  2. If, during the evaluation, the well is determined NOT to have strategic value (leasehold), Noble will add the well to P&A schedule.
  3. If, during the P&A, a mechanical integrity loss is suspected, Noble will initiate a site investigation and submit a Form 27.

# Attachment 1 – Appendix 1 Noble Energy Alternative Mechanical Integrity Assurance Program Flowchart



### Key Assumptions

At any step in the process, well submittals to COGCC with this alternative program (in addition to all applicable COGCC Rules / Regulations)

Form 17 includes information about Tubing, Production Casing, & Surface Casing Pressures; Characteristics of Flow; Fluid Type; Sample Data; Etc.

Wells currently exceeding 25psi will have transducers installed and be P&A'd by 12/31/2019 (i.e. 222 wells listed in bold in Appendix 2)

Bradenhead Monitoring Program continues until all wells within program are P&A'd or returned to production.



Well API Number	Well Name
05-123-07278	UPRR 66 AMOCO 1
05-123-07607	STATE 10
05-123-10836	ECKHARDT 01
05-123-10992	GIBBS 28-01
05-123-10997	FISHER 01
05-123-11021	FLATHEAD 01-35
05-123-11312	KISSLER 01
05-123-11322	DAVIS, W. 01-33
05-123-11379	HALL 01
05-123-11634	TODD 01
05-123-11667	JERKE 1
05-123-11668	WASS 2
05-123-11738	ALLES 02
05-123-11818	ARNOLD 44-21
05-123-11829	THOMPSON 02
05-123-11904	ISHIGURO 1
05-123-11979	STATE 06-36
05-123-11980	STATE 07-36
05-123-12149	SPOMER 33-12
05-123-12155	NICHOLS 02
05-123-12233	G.W. DOERING 01-28
05-123-12234	STEWART 2
05-123-12274	BOHLENDER 04
05-123-12341	MCKINLEY 04
05-123-12342	MCKINLEY 05
05-123-12348	REICHERT 04
05-123-12374	G.W. DOERING 02-28
05-123-12517	LUNDVALL 01-30
05-123-12607	REHMER 01
05-123-12683	BAINBRIDGE 01
05-123-12845	MONFORT 6-10
05-123-12875	KAMMERZELL 01
05-123-12899	STATE-HUME 1
05-123-12900	ISHIGURO 2
05-123-12916	STATE-ELK 1
05-123-12935	KERBS RK20-05
05-123-12938	BERNHARDT 01-02
05-123-13120	GLENDENNING 13-3
05-123-13150	GUY SHABLE INC. 1-4
05-123-13283	ALVA SHABLE 2-4
05-123-13288	NOE 1-30
05-123-13377	PEPLER 9-35
05-123-13412	BOHLENDER D20-06
05-123-13731	STEWART RC30-06
05-123-13770	OCOMA C17-11
05-123-13820	TREBOR 811-11
05-123-13823	TREBOR 814-06
05-123-14003	WIEDEMAN PMJ28-07
05-123-14176	ANNIE B03-10
05-123-14206	JOHNSON FARM 43-20 2
05-123-14217	ARISTOCRAT 11-01
05-123-14326	HANSEN BC001-15
05-123-14328	SPOMER BC193-13
05-123-14757	HEINLE 16-04
05-123-14766	BRUNITZ 16-02
05-123-14784	LORENZ UPRR 32-27 4
05-123-14811	FISCHER 33-02
05-123-14871	KISSLER K21-02
05-123-14873	KISSLER K21-12
05-123-14918	FREDA REEVE 02-01
05-123-14936	FRTZLER 12-22 1
05-123-15083	FREDA REEVE 03-01
05-123-15156	UPRC 07-04G
05-123-15319	FREDA REEVE 04-01
05-123-15368	UPRC FEDERAL 27-03F

Appendix 2  
Noble Energy Alternative Mechanical Integrity Assurance Program

05-123-15369	UPRC FEDERAL 27-06F
05-123-15370	UPRC 07-05G
05-123-15371	UPRC 07-06G
05-123-15380	UPRC 27-16F
05-123-15417	HEITMAN K34-05
05-123-15520	SANDAU 34-11F
05-123-15613	UPRC 11-06F
05-123-15624	UPRC 11-05F
05-123-15808	ELISE STATE C24-08
05-123-16079	GATEWOOD F 03-12
05-123-16127	ADOLPH F21-14
05-123-16195	EWING 33-10
05-123-16222	WARREN E35-13
05-123-16328	CARLSON 23-08F
05-123-16340	UPRC 27-10F
05-123-16375	UPRC FEDERAL 33-05F
05-123-16430	CAMENISCH-SUPREME C 4-3
05-123-16443	UPRC 29-07C
05-123-16594	MCCELLAN 04-12
05-123-16713	OSTER 13-15
05-123-16843	HSR GUY SHABLE INC 4 4
05-123-16988	BRUZEWSKI 33-15F2
05-123-17102	RUMSEY 35-10
05-123-17103	RUMSEY 35-15
05-123-17150	DAVIS 33-08
05-123-17157	TENNYSON 34-12
05-123-17174	LOWER LATHAM 02-05G
05-123-17233	DOERING 28-16
05-123-17293	DOERING 28-10
05-123-17595	UPRC 27-05C
05-123-17748	COLEMAN 23-0614
05-123-17867	UPRC 25-1317
05-123-17868	UPRC 25-1417
05-123-17922	STATE 36-0317
05-123-17924	MAGGIE B13-12
05-123-17982	UPRC 17-1616
05-123-18211	HAYS 31-02HS
05-123-18232	CAVANAGH 36-10H6
05-123-18374	DOS RIOS 33-10H6
05-123-18564	UPV 03-01G6
05-123-18686	REHMER 36-14H6
05-123-18708	HUNGENBERG WATSON E21-11
05-123-18724	ARD 06-0314
05-123-19241	ZACH C11-05
05-123-19508	HSR MOSER 1-27
05-123-19517	HSR MOSER 16-27
05-123-19851	SCOTTDAL 26-13
05-123-19876	FRANK 22-33
05-123-20096	KAMMERZELL K04-14
05-123-20305	EATON CATTLE 19-21
05-123-20455	HSR-KARRE 9-15
05-123-20481	SCHANK 135-02
05-123-20744	WETCO K20-12
05-123-21123	ABBEEY D01-03
05-123-21175	OLSEN Y 5- 5JII
05-123-21177	LEVI C05-15
05-123-21313	LORENZ 16-15
05-123-21322	DUMLER 10-27
05-123-21863	JOT 025-25
05-123-21908	RITCHEY H27-05
05-123-21985	DOERING 128-23
05-123-22140	BERNHARDT 8-1
05-123-22235	HALL 31-12
05-123-22263	HILL STATE 18-36
05-123-22273	EATON 11-19
05-123-22350	FRANK 22-34
05-123-22743	DUNBAR 18-33
05-123-22790	ABBEEY D01-19

Appendix 2  
Noble Energy Alternative Mechanical Integrity Assurance Program

05-123-22782	CARLSON 18-41
05-123-22810	CARLSON 18-44
05-123-22855	MOSER K26-25
05-123-23046	RANGE K17-09
05-123-23192	HSR-KARRE 20-15
05-123-23254	STATE M36-03
05-123-23255	STATE M36-05
05-123-23328	LEFFLER 121-02
05-123-23329	LEFFLER 121-06
05-123-23446	HUNT K FEDERAL 33-19
05-123-23483	ORR 44-03
05-123-23529	HUNGENBERG E28-11
05-123-23564	HOFFNER 34-35
05-123-23613	BEEBE DRAW G26-23
05-123-23920	DESHAZO 24-14
05-123-24007	WASTE MANAGEMENT 31-35
05-123-24213	MONFORT E30-22
05-123-24227	GUTTERSEN USX CC17-03
05-123-24353	LAMP H25-31
05-123-24599	EWING 23-10
05-123-24665	MICCELLAN 04-15
05-123-24684	LLOYD FEDERAL 37-15
05-123-24923	SHOEMAKER A12-01
05-123-24955	EWING 20-10
05-123-24971	WEIDENKELLER 01-25
05-123-25065	JERKE G07-22
05-123-25083	FRAZIER 33-25
05-123-25178	FERGUSON B23-22
05-123-25272	SCHAFER K21-17
05-123-25283	HOWARD USX A09-07
05-123-25286	MARKUS F28-25
05-123-25343	FIVE 25-10
05-123-25344	FIVE 22-10
05-123-25377	WELLS RANCH AA26-06
05-123-25444	RYANN STATE C16-27
05-123-25462	BASEBALL K11-04X
05-123-25839	EDWARD 22-22
05-123-26525	BERNHARDT 012-19
05-123-26609	RICHARDSON K17-14X
05-123-26615	SCHMIDT 21-26
05-123-26621	HAMILTON F25-25
05-123-26653	HAMILTON F25-20
05-123-26673	LLOYD 25-15
05-123-26815	WELLS RANCH AA21-01
05-123-27026	ATREYU F34-24
05-123-27047	WELLS RANCH USX AA25-11
05-123-27144	ALLEY J33-24D
05-123-28122	HAREN K21-28
05-123-28162	FOOS C11-24
05-123-28168	BEAMAN G35-31
05-123-29004	DECHANT D07-21
05-123-29029	CONRAD FEDERAL 24-12
05-123-29030	CONRAD FEDERAL 41-12 API 29030
05-123-29031	CONRAD FEDERAL 17-12
05-123-29445	GUTTERSEN STATE D16-20
05-123-29600	PUYPE B38-17
05-123-29627	HAREN K16-21
05-123-29714	DECHANT 24-36
05-123-29729	CANNON X03-30D
05-123-29787	CECIL USX A01-11D
05-123-29794	LDS F01-28D
05-123-29857	OWENS K20-28
05-123-29947	MOSER H34-27
05-123-29998	STROH 002-17
05-123-30004	ABBEY D01-27
05-123-30110	KOHLHOFF USX A817-13P
05-123-30285	CHESNUT G22-21
05-123-30286	CHESNUT G22-20D

Appendix 2  
Noble Energy Alternative Mechanical Integrity Assurance Program

05-123-30485	WELLS RANCH USX AE19-03P
05-123-30680	WEINMASTER G32-18
05-123-30869	ROMERO G03-30D
05-123-31011	PIONEER Y08-05
05-123-31157	ALOYSIUS C34-18
05-123-32140	HERBST C22-24
05-123-32269	FIVE RIVERS USX K09-22D
05-123-32299	FIVE RIVERS USX K09-08D
05-123-32325	FIVE 32-10
05-123-32394	ARISTOCRAT PC H11-07
05-123-32437	DECHANT STATE H36-31D
05-123-32569	FIVE RIVERS K03-33D
05-123-32570	FIVE RIVERS USX K09-01D
05-123-32574	FIVE RIVERS K10-30D
05-123-32578	FIVE RIVERS USX K09-17D
05-123-32722	RICHTER USX AB27-25
05-123-32953	STARKE Y20-03
05-123-34266	STATE C16-20D
05-123-34348	KY BLUE D30-32
05-123-34498	SH C17-24D
05-123-34933	MCCELLAN PC G04-18DX
05-123-14017	LULL UNIT 06-03
05-123-14237	LULL UNIT 09-09
05-123-07598	STATE 09
05-123-07827	HOWELL 01
05-123-10819	SITZMAN 01
05-123-10929	BATES 01
05-123-12084	FEIT 02-24EG
05-123-12190	PALSER E14-15
05-123-12232	STATE HOPPE 16-01
05-123-12332	ANDRE 02-03E
05-123-12353	HOWARD 06-26EG
05-123-12473	PERSON 02-02
05-123-12686	FLATIRON 10-36
05-123-12827	FHA 02-01
05-123-12862	NELSON 12-22
05-123-12882	TIPTON 10-26EG
05-123-12942	BENSON 13-15
05-123-12985	RAY-GLO 01
05-123-13044	LUCERO 01-34
05-123-13137	COWHERD 01
05-123-13156	LINDSAY C33-03
05-123-13167	LINDSAY C33-07
05-123-13208	HOSHIKO 3-33
05-123-13359	VICTOR C 29-09
05-123-13365	STATE FARM 36-07
05-123-13598	GOZA 1
05-123-13967	MOSSBERG PMJ28-09
05-123-13968	MOSSBERG PMJ28-16
05-123-14698	LINDSAY C33-10
05-123-14860	SPOMER 01
05-123-14880	PTF C32-16
05-123-15155	UPRC 07-03G
05-123-15190	BOHLENDER 33-22
05-123-15548	DUNCAN D 20-14
05-123-15806	SPIKE STATE GWS C24-02
05-123-15807	SPIKE STATE GWS C24- 7
05-123-15882	MCGUIRK HOWELL C 32-14
05-123-15913	SPIKE STATE DJ16-11
05-123-15934	UPRC 29-06H
05-123-15935	UPRC 29-04H
05-123-16006	DUNCAN D 20-2
05-123-16044	SPIKE STATE H36-03
05-123-16125	SCHWISOW E14-09
05-123-16126	SCHWISOW E14-16
05-123-16221	WARREN E35-12
05-123-16306	SINJIN E36-13

Appendix 2  
Noble Energy Alternative Mechanical Integrity Assurance Program

05-123-16354	SINUIN E36-06
05-123-16404	DUNCAN D 20-11
05-123-16538	FRANK 25-13
05-123-17084	MCINTYRE 34-16
05-123-17185	OSH D 28-1
05-123-17186	OSH D 28-2
05-123-17188	OSH D 28-8
05-123-17311	OSH D 22-13
05-123-17673	COCKROFT 11-23
05-123-17881	JOHNSON 11-1666
05-123-17895	SITZMAN 04-0714
05-123-17910	STATE 16-0514
05-123-17912	MORO FARMS 20-15G05
05-123-18156	MOSSBERG 28-15H6
05-123-18622	BICKLING 03-42
05-123-18623	BICKLING 03-44
05-123-18709	HUNGENBERG WATSON E21-13
05-123-18710	HUNGENBERG WATSON E21-14
05-123-18962	SLW GREEN STATE BB18-11
05-123-19135	WASTE SERVICES 15-26
05-123-19155	GUTTERSEN 7-4
05-123-19168	GUTTERSEN STATE 7-28
05-123-19218	MEYER J26-16
05-123-19502	WIEDEMAN E 03-11
05-123-20032	DINNER 15-43
05-123-20203	MAURY 013-06
05-123-20886	WELLS 42-15
05-123-20888	WELLS 33-15
05-123-21577	BERG FARMS 19-21
05-123-21715	CONNELL 004-05
05-123-21726	LINDSAY C33-19
05-123-21905	BATES C03-02
05-123-21997	DINNER 15-42
05-123-22428	SHARKEY 42-35
05-123-22616	PALSER E14-23
05-123-22728	FOSS 13-13
05-123-22778	FOSS 13-11
05-123-22779	FOSS 13-14
05-123-22780	FOSS 13-12
05-123-22832	HOWARD A27-09
05-123-22856	HOWARD A27-16
05-123-22860	WASTE MANAGEMENT 12-11
05-123-23037	COCKROFT 13-11
05-123-23041	UHRICH 11-17
05-123-23249	CANNON H34-13
05-123-23252	CANNON H34-12
05-123-23304	ALIM USX 24-11
05-123-23385	KASTNER 31-03
05-123-23523	TRUMP A13-10
05-123-23528	HUNGENBERG E28-25
05-123-23530	HUNGENBERG E28-12
05-123-23531	HUNGENBERG E28-13
05-123-23539	SPEICHER 31-15
05-123-23763	MCKENNEY 14-12
05-123-23818	RADY 12-23
05-123-24291	FOSS 06-32
05-123-24307	PEPPLER 17-34
05-123-24324	BASHOR 17-41
05-123-24331	LARSON USX AA19-05
05-123-24332	LARSON USX AA19-04
05-123-24341	CECIL USX A01-10
05-123-24394	TRUMP A13-09
05-123-24458	RADY 12-24
05-123-24459	BASHOR 17-14
05-123-24479	LARSON USX AA19-06
05-123-24480	LARSON USX AA19-03
05-123-24484	ALIM USX E11-13
05-123-24485	TAYLOR USX AA07-14



Appendix 2  
Noble Energy Alternative Mechanical Integrity Assurance Program

05-123-24543	HOWE USX AB33-06
05-123-24561	FOSS USX AA05-19
05-123-24567	CECIL USX A01-19
05-123-24595	TRINITY USX AA07-17
05-123-24608	BROWN USX AA03-17
05-123-24609	BROWN USX AA03-23
05-123-24611	ARY USX AB31-14
05-123-24630	STARMAN USX A17-23
05-123-24693	ROUSE USX AB33-25
05-123-24696	ROUSE USX A05-17
05-123-24709	COCKROFT USX A11-02
05-123-24722	HAGEMASTER 43-6
05-123-24725	WELLS RANCH USX AA19-23
05-123-24864	LAPP 13-23
05-123-24972	SITZMAN C04-27
05-123-24991	SITZMAN C04-28
05-123-25051	WELLS RANCH USX AA35-23
05-123-25052	WELLS RANCH USX AA35-12
05-123-25220	WELLS RANCH USX AA13-25
05-123-25280	WELLS RANCH USX AA15-05
05-123-25378	WELLS RANCH AA26-01
05-123-25380	WELLS RANCH AA26-05
05-123-25381	WELLS RANCH AA26-08
05-123-25382	WELLS RANCH AA26-04
05-123-25430	LAPP 13-24
05-123-25497	LOEFFLER C10-30
05-123-25588	GREEN USX EE13-13
05-123-25590	WELLS RANCH AA26-10
05-123-25740	WELLS RANCH USX AA25-06
05-123-25750	WELLS RANCH USX AA25-04
05-123-25753	WELLS RANCH USX AA25-02
05-123-25771	WELLS RANCH USX BB11-07
05-123-25784	WELLS RANCH USX AA25-08
05-123-25954	AURORA USX AB25-25
05-123-26005	CERVI USX CC15-09
05-123-26025	TRINITY USX AA07-08
05-123-26038	CERVI USX CC21-14
05-123-26040	CERVI USX CC21-10
05-123-26043	BROWN USX AA03-07
05-123-26046	BROWN USX AA03-15
05-123-26052	CERVI USX CC23-02
05-123-26066	70 RANCH USX BB23-02
05-123-26103	WELLS RANCH USX BB11-15
05-123-26116	BASHOR STATE AA16-05
05-123-26146	WELLS RANCH USX AA35-11
05-123-26147	WELLS RANCH USX AA35-14
05-123-26156	DYER USX A03-07
05-123-26207	FAULKNER USX AB29-14
05-123-26208	HAGEMASTER USX AA07-01
05-123-26326	FOSS USX AA05-05
05-123-26348	MOSSBERG 128-23
05-123-26361	BICKLING FARMS 03-45
05-123-26374	WELLS RANCH USX AA27-03
05-123-26383	WELLS RANCH USX AA27-07
05-123-26432	WELLS RANCH USX AA19-10
05-123-26433	WELLS RANCH USX AA19-09
05-123-26434	WELLS RANCH USX AA19-15
05-123-26435	WELLS RANCH USX AA19-16
05-123-26439	LETTERLY USX AB23-13
05-123-26461	HAGEMASTER 44-6
05-123-26566	WELLS RANCH USX BB11-16
05-123-26591	BOOTH USX EE25-08
05-123-26592	BOOTH USX EE25-16
05-123-26611	JOHNSON A13-23
05-123-26645	JOHNSON A13-15
05-123-26658	TREBOR B11-17
05-123-26662	FOSS 13-15
05-123-26754	WELLS RANCH USX BB11-08

Appendix 2  
Noble Energy Alternative Mechanical Integrity Assurance Program

05-123-26755	WELLS RANCH USX BB11-02
05-123-26756	WELLS RANCH USX BB11-10
05-123-26812	WELLS RANCH AA21-06
05-123-26813	WELLS RANCH AA21-05
05-123-26818	WELLS RANCH AA21-02
05-123-26819	WELLS RANCH AA21-03
05-123-26865	WELLS RANCH USX AA13-14
05-123-26967	WELLS RANCH USX AA13-04
05-123-26999	LAPP 13-35
05-123-27002	WELLS RANCH USX AA15-04
05-123-27003	WELLS RANCH USX AA15-08
05-123-27005	WELLS RANCH USX AA11-14
05-123-27164	KEHN USX AA01-02
05-123-27193	KEHN USX AA01-06
05-123-27195	KEHN USX AA01-04
05-123-27197	KEHN USX AA01-10
05-123-27198	KEHN USX AA01-16
05-123-27199	KEHN USX AA01-08
05-123-27295	WELLS RANCH USX AA25-25
05-123-27390	HOWE USX AB33-04
05-123-28141	BROWN USX AA03-16
05-123-28144	BROWN USX AA03-10
05-123-28145	BROWN USX AA03-09
05-123-28146	BROWN USX AA03-08
05-123-28194	BUCKCHERRY USX AA03-02
05-123-29010	BROWN USX AA03-01
05-123-29040	BUCKCHERRY USX AA03-12
05-123-29088	CECIL USX A01-13
05-123-29091	CECIL USX A01-09
05-123-29109	RADY 12-3-17
05-123-29246	WELLS RANCH USX AA15-03
05-123-29254	BASHOR STATE AA16-02
05-123-29255	BASHOR STATE AA16-01
05-123-29256	BASHOR STATE AA16-07
05-123-29257	BASHOR STATE AA16-08
05-123-29262	BASHOR STATE AA16-17
05-123-29272	BASHOR STATE AA16-18
05-123-29273	BASHOR STATE AA16-20
05-123-29304	WELLS RANCH USX AA13-13
05-123-29404	ROUSE USX A05-04
05-123-29405	ROUSE USX A05-06
05-123-29415	WELLS RANCH USX AA25-01
05-123-29417	WELLS RANCH USX AA25-05
05-123-29418	WELLS RANCH USX AA25-07
05-123-29422	ROUSE USX A05-07
05-123-29423	ROUSE USX A05-08
05-123-29487	ROUSE USX A05-01
05-123-29500	ROUSE USX AB33-13
05-123-29528	WELLS RANCH USX AA35-15
05-123-29530	WELLS RANCH USX AA35-09
05-123-29570	STARMAN USX A17-16
05-123-29598	ROUSE USX AB33-11
05-123-29635	ROUSE USX AB33-14
05-123-29636	ROUSE USX A05-02
05-123-29671	70 RANCH USX BB23-07
05-123-29672	70 RANCH USX BB23-08
05-123-29673	70 RANCH USX BB23-01
05-123-29712	DECHANT 15-36
05-123-30105	FORTENBERRY USX AB19-05P
05-123-30106	FORTENBERRY USX AB19-06P
05-123-30177	GREEN USX EE13-11P
05-123-30348	WELLS RANCH USX AE19-01P
05-123-30349	ROUSE USX A05-03
05-123-30351	AURORA USX AB25-11P
05-123-30476	WELLS RANCH USX BB11-01
05-123-30492	CSU E35-04
05-123-30550	KOHLHOFF USX AB21-05P
05-123-30551	KOHLHOFF USX AB21-06P

Appendix 2  
Noble Energy Alternative Mechanical Integrity Assurance Program

05-123-30683	WELLS RANCH AA26-07X
05-123-31301	WALCKER USX A801-08P
05-123-31314	SHABLE USX AB11-14P
05-123-31319	SHABLE USX AB11-09P
05-123-31841	FOSS USX AA05-04
05-123-31842	FOSS USX AA05-03
05-123-31918	NCLP USX AA05-09
05-123-31936	LYSTER E26-22D
05-123-32548	NCLP PC AA08-08D
05-123-32568	NCLP PC AA08-19
05-123-32571	NCLP PC AA08-03D
05-123-33195	GARCIA USX AB35-23
05-123-34336	BURMAN C05-22D
05-123-41971	WELLS RANCH BB01-655
05-123-13625	LULL UNIT 4-8
05-123-13653	LULL UNIT 10-02
05-123-33065	FISCUS MESA 09-10H
05-123-36726	LONE PINE LB19-78HN
05-123-23552	TRE-MAT 23-12
05-123-23443	BASHOR 17-13
05-123-24323	BASHOR PC AA17-15
05-123-24322	BASHOR PC AA17-16
05-123-32282	BASHOR PC AA17-21
05-123-32260	BASHOR PC AA17-22
05-123-24320	BASHOR PC AA17-23
05-123-32256	BASHOR PC AA17-24
05-123-32266	PEPPLER PC AA17-20
05-123-27051	THRALL USX AA19-11
05-123-27052	THRALL USX AA19-12
05-123-24445	THRALL USX AA19-13
05-123-27050	THRALL USX AA19-14
05-123-26516	THRALL USX AA19-25
05-123-21852	FARMLAND 10-32
05-123-21853	FARMLAND 16-32
05-123-13163	WEBSTER 9-32
05-123-32575	NCLP PC AA08-02D
05-123-15915	SPIKE STATE D16-14
05-123-29243	GUTTERSEN STATE D16-24
05-123-30848	GUTTERSEN STATE D16-21
05-123-30881	GUTTERSEN STATE D16-18
05-123-32546	NCLP PC AA08-07D
05-123-32573	NCLP PC AA08-18D
05-123-12664	STATE BOOTH 36-02
05-123-12910	CONRAD HERBST 02
05-123-13184	DIETRICH RC07-08
05-123-13354	OCOMA B29-13
05-123-14813	HANSCOME 11-07 (AKA 7)
05-123-15171	UPRC 01-15J
05-123-15992	SPIKE STATE D28-12
05-123-17404	NORRIS D32-04J
05-123-17604	ROHR 15-06
05-123-18641	RODRIGUEZ 17-32
05-123-21693	JOHNSON 20-29
05-123-22619	SINJIN E36-25
05-123-22847	BRUCE 17-35
05-123-23386	KASTNER 41-03
05-123-23656	SHARKEY 41-35
05-123-24321	BASHOR 17-11
05-123-24712	COCKROFT USX A11-14
05-123-25046	WELLS RANCH USX AA15-17
05-123-25962	JOHNSON C29-29
05-123-26371	LINDBLAD 25-34
05-123-26555	HERTZKE N01-12
05-123-26618	HERTZKE N01-11
05-123-26806	WELLS RANCH AA21-11
05-123-27308	SITZMAN C04-17
05-123-29239	WELLS RANCH USX AA13-02
05-123-29242	WELLS RANCH USX AA13-07

Appendix 2  
Noble Energy Alternative Mechanical Integrity Assurance Program

05-123-29247	WELLS RANCH USX AA13-01
05-123-31840	FOSS USX AA05-06
05-123-32357	BASHOR PC AA17-17
05-123-12972	DAVIS FARMS 7-4
05-123-15823	SPIKE STATE CC30-08
05-123-18469	MAGGIE B13-13
05-123-19136	WASTE SERVICES 16-26
05-123-23540	SPEICHER 41-15
05-123-24565	HARPER USX EE27-10
05-123-24697	ROUSE USX A05-19
05-123-25077	JOHNSON C29-19
05-123-25219	WELLS RANCH USX AA11-25
05-123-25749	WELLS RANCH USX AE07-12
05-123-25773	WELLS RANCH USX AE07-14
05-123-25884	WELLS RANCH USX AA35-16
05-123-25951	WELLS RANCH USX AA35-10
05-123-26334	STROMBERGER 13-32
05-123-26667	TREBOR B14-19
05-123-29403	ROUSE USX A05-05
05-123-29713	DECHANT 7-36
05-123-30273	ARENS G22-18D
05-123-30493	CSU E35-19
05-123-14008	LULL UNIT 04-17
05-123-10831	CONNELL 01
05-123-13358	OCOMA C07-09
05-123-14154	OSTER PMG28-16
05-123-17743	STATE 16-1514
05-123-18677	BICKLING E21-10
05-123-18693	TIPTON E26-13
05-123-19516	HSR MOSER 15-27
05-123-20884	WELLS 31-15
05-123-20889	WELLS 22-15
05-123-20890	WELLS 44-15
05-123-21612	COCKROFT 11-22
05-123-22797	WEBER 06-13
05-123-23814	TIADEN 36-11
05-123-24719	BOOTH USX EE25-17
05-123-25279	WELLS RANCH USX AA15-07
05-123-25457	DINNER 06-35
05-123-26033	CERVI USX CC27-11
05-123-26118	BASHOR STATE AA16-06
05-123-26125	BASHOR STATE AA16-12
05-123-26814	WELLS RANCH AA21-04
05-123-27001	WELLS RANCH USX AA15-02
05-123-29063	WELLS RANCH USX AE19-07
05-123-29070	WELLS RANCH USX AE19-15
05-123-29253	BASHOR STATE AA16-04
05-123-29261	BASHOR STATE AA16-19
05-123-29484	NCLIP PC AA04-12
05-123-29495	NCLIP PC AA04-14
05-123-29496	NCLIP PC AA04-25
05-123-30198	BOOTH USX EE23-15P
05-123-30486	WELLS RANCH USX AE19-09P
05-123-31313	FURROW USX AB15-10P
05-123-32086	DEJONG USX AB13-06P
05-123-11975	HANSCOME C02
05-123-12454	HOWARD STATE 1
05-123-13199	PRINTZ 2-31
05-123-13572	WEBSTER 14-32
05-123-13881	SCHMIDT AMOCO UPRR 44-23
05-123-15898	COBB 06-23
05-123-16063	SPIKE STATE D22- 2
05-123-16118	UHRICH E34-05
05-123-17348	SMITH 09-05
05-123-18683	MONFORT E19-12
05-123-18684	MONFORT E19-13
05-123-18975	CALLY D15-02
05-123-21659	WARDLAW 35-24

Appendix 2  
Noble Energy Alternative Mechanical Integrity Assurance Program

05-123-21757	OWIL CREEKSTATE 10-16
05-123-22806	HOFFNER 43-35
05-123-22593	OPDYKE 31-03
05-123-23599	HOFFNER 44-35
05-123-24538	TORRES USX AB35-09
05-123-25471	DINNER E14-05
05-123-25655	DONOH0 18-32
05-123-26026	TRINITY USX AA07-07
05-123-26092	HAGEMEISTER USX AA07-02
05-123-26093	HAGEMEISTER USX AA07-03
05-123-30480	WELLS RANCH AE32-04
05-123-31161	GREEN USX EE13-07
05-123-31972	LETTERLY USX AB23-09P
05-123-10987	DINNER 15-01
05-123-11709	EASTON 02
05-123-11718	CHRISTIANSEN 01
05-123-12854	HERBST 27-03
05-123-12943	HERBST 27-06
05-123-13004	UHRICH E34-04
05-123-14210	HARLESS PMC17-02
05-123-14391	MCINTOSH USX Y21-01 (FKA UPRR 62 PAN AM O 1)
05-123-15285	HSR-BOTT 3-23
05-123-16707	WATSON E28-03
05-123-16709	WATSON E28-06
05-123-16710	WATSON E28-07
05-123-16889	KYLE WHITE D27-15
05-123-17100	BOULTER 16-11
05-123-18203	HOWELL C32-12
05-123-18707	BICKLING E21-02
05-123-20684	PARKER 29-34
05-123-21706	HOSHIKO B35-23
05-123-23215	FRICO 23-15
05-123-23393	BAY 44-01
05-123-23394	BAY 43-01
05-123-23594	KREYKES 13-13
05-123-23683	KREYKES 13-11
05-123-23685	HARSH 01-31
05-123-23742	HARSH 01-32
05-123-24279	PETTINGER USX AB27-07
05-123-24387	WASTE MANAGEMENT USX Y 03-19
05-123-24534	PETTINGER USX AB27-17
05-123-24790	WASTE MANAGEMENT USX Y03-05
05-123-24791	WASTE MANAGEMENT USX Y 03-06
05-123-24792	WASTE MANAGEMENT USX Y 03-03
05-123-24793	WASTE MANAGEMENT USX Y 03-04
05-123-25131	WELLS RANCH USX BB15-25
05-123-25770	NEW CACHE 8-23
05-123-26036	CERVI USX CC35-15
05-123-26219	MORAN 30-14
05-123-26437	FLOS E34-06
05-123-26521	WELLS RANCH USX BB15-01
05-123-26535	WELLS RANCH USX BB15-07
05-123-26551	WELLS RANCH USX BB15-14
05-123-28073	70 RANCH USX BB09-08
05-123-28075	70 RANCH USX BB09-10
05-123-29232	SOUTHARD 112-04
05-123-33500	LINDBLAD PC MM25-15
05-123-13942	LILLI UNIT 14-06
05-123-22026	EISENSTAT 22-13
05-123-22404	EISENSTAT 22-23
05-123-11773	HUNGENBERG WATSON 13-21
05-123-22622	STEPHENSON 06-32
05-123-22623	STEPHENSON 6-33
05-123-22625	STEPHENSON 06-31
05-123-24937	KREPS 06-35
05-123-26556	HUNGENBERG E21-25
05-123-17393	NORRIS D32-01
05-123-17394	NORRIS D32-02



Appendix 2  
Noble Energy Alternative Mechanical Integrity Assurance Program

05-123-17398	NORRIS D32-07
05-123-17402	NORRIS D32-01J
05-123-24494	HOWARD USX A09-13
05-123-24524	CECIL USX A01-17
05-123-26467	CECIL USX A01-06
05-123-26468	CECIL USX A01-07
05-123-29090	CECIL USX A01-08
05-123-24045	LAPP 13-34
05-123-24136	LAPP 13-32
05-123-25306	MCKENNEY 14-11
05-123-25429	LAPP 13-33
05-123-25439	LAPP 13-31
05-123-24222	GUTTERSEN USX CCL7-06
05-123-24224	GUTTERSEN USX CCL7-19
05-123-21130	WELLS 12-11
05-123-22825	HOFFNER 33-35
05-123-24578	ROTH 24-21
05-123-25116	WELLS RANCH USX BB11-23
05-123-25117	WELLS RANCH USX BB11-03
05-123-26757	WELLS RANCH USX BB11-04
05-123-26758	WELLS RANCH USX BB11-06
05-123-09324	BROWN 1
05-123-09752	MILLER FEED LOTS 1
05-123-11702	FOY 01
05-123-11869	TWO E RANCHES 1 (API 11869)
05-123-13023	MORO FARMS 01
05-123-13046	ROTH 12-30
05-123-13060	WEBSTER 9-28
05-123-13197	WPF III A18-13 (FKA 18-3)
05-123-13382	TREBOR B10-15
05-123-13402	TREBOR B11-08
05-123-13555	FRANCEN 11-30
05-123-13774	TREBOR B12-01
05-123-13777	TREBOR B12-08
05-123-13852	WEBSTER B06-01
05-123-14157	NAKAGAWA PMB13-10
05-123-14172	COX PMC08-04
05-123-14570	BOHLENDER 08-05
05-123-15078	NAKAGAWA PMB13-16
05-123-15995	UPRC 17-13Q
05-123-16043	SPIKE STATE H36-04
05-123-16374	UPRC FEDERAL 33-04F
05-123-16624	CAMOLO RED D27-02J
05-123-16708	WATSON E28-05
05-123-16857	DINNER 01-42
05-123-17006	CAMOLO RED D27-04
05-123-17007	CAMOLO RED D27-05
05-123-17008	CAMOLO RED D27-06
05-123-17756	HOSHIKO 35-10H4
05-123-17768	DINNER E23-07
05-123-18167	MONFORT 24-06H4
05-123-18536	WARDLAW 35-21
05-123-18537	WARDLAW 35-22
05-123-18676	ARNOLD E21-09
05-123-18682	MONFORT E19-11
05-123-19042	SCHMIDT 25-2316
05-123-20811	LF RANCH 35-17
05-123-20812	LF RANCH 42-17
05-123-20813	LF RANCH 44-17
05-123-21621	RODRIGUEZ 17-31
05-123-21946	DINNER 14-14
05-123-21947	DINNER 14-13
05-123-21984	FRANCEN 19-30
05-123-22159	TREBOR B12-17
05-123-22173	GUTTERSEN STATE CC32-14
05-123-22520	COX C08-19D
05-123-22731	PETERSON 21-21
05-123-22793	CARLSON 18-43

Appendix 2  
Noble Energy Alternative Mechanical Integrity Assurance Program

05-123-23996	KANGA STATE D36-0211
05-123-23131	RHOOD STATE D36-0711
05-123-23275	STORER A12-02
05-123-23289	LANA Y17-1411
05-123-23290	BUCKMUR B02-25
05-123-23291	BUCKMUR B02-14
05-123-23600	DUNBAR 18-35
05-123-23684	KREYKES 13-15
05-123-24221	GUTTERSEN USX CC17-11
05-123-24223	GUTTERSEN USX CC17-12
05-123-24225	GUTTERSEN USX CC17-25
05-123-24226	GUTTERSEN USX CC17-13
05-123-24229	GUTTERSEN USX CC17-14
05-123-24249	DINNER 14-15
05-123-24659	BROWN USX AA03-25
05-123-24764	KREYKES 13-14
05-123-24795	WASTE MANAGEMENT USX Y 03-10
05-123-24904	PITNER 13-12
05-123-24950	SHOEMAKER A12-08
05-123-24951	SHOEMAKER A12-17
05-123-24953	SHOEMAKER A12-07
05-123-25047	WELLS RANCH USX AA15-19
05-123-25864	WEILAND 15-45
05-123-26047	BROWN USX AA03-13
05-123-26067	70 RANCH USX BB25-04
05-123-26119	BASHOR STATE AA16-03
05-123-26176	WELLS RANCH USX BB15-13
05-123-26265	GUTTERSEN USX CC17-07
05-123-26282	GUTTERSEN USX CC17-23
05-123-26283	GUTTERSEN USX CC17-15
05-123-26286	GUTTERSEN USX CC17-05
05-123-26421	COUNTRY 129-04
05-123-26705	WELLS RANCH USX AE21-14
05-123-26817	WELLS RANCH AA21-07
05-123-27178	WELLS RANCH USX AA27-08
05-123-28074	70 RANCH USX BB09-11
05-123-28083	70 RANCH USX BB09-05
05-123-28142	BROWN USX AA03-14
05-123-28143	BROWN USX AA03-11
05-123-29098	WELLS RANCH PC AA22-13
05-123-29414	WELLS RANCH USX AA15-06P
05-123-29499	WELLS RANCH AA26-12H2B
05-123-29535	WELLS RANCH USX AA27-01
05-123-29858	SCHMIDT G30-20
05-123-29894	SCHMIDT G30-32
05-123-30484	WELLS RANCH USX AE19-05P
05-123-31139	70 RANCH USX BB35-02
05-123-31283	70 RANCH USX BB35-01P
05-123-31453	70 RANCH USX BB35-08
05-123-33459	VEGA USX A03-05
05-123-27389	CECIL USX AB35-14
05-123-33291	CECIL USX AB35-12D
05-123-33294	CECIL USX AB35-11D
05-123-11405	LUNDVALL 09
05-123-17716	BICKLING 03-41
05-123-18234	SEVERIN 04-13666
05-123-19579	PSC J05-11
05-123-21672	BICKLING 03-43
05-123-22381	WINKINSON 19-24
05-123-22384	THAYER 19-34
05-123-22385	THAYER 19-31
05-123-23815	LINDBLAD 17-34
05-123-26619	HERTZKE N01-07
05-123-32873	WATSON E28-19
05-123-22813	HOFFNER 13-35
05-123-22824	HOFFNER 14-35
05-123-23561	SIDWELL A26-03
05-123-26328	KARLBERG STATE 36-42

Appendix 2  
Noble Energy Alternative Mechanical Integrity Assurance Program

05-123-26394	KARLBERG STATE 36-45
05-123-26395	KARLBERG STATE 36-41
05-123-26534	WELLS RANCH USX BB15-12
05-123-26560	WELLS RANCH USX BB15-11
05-123-26571	LANDWEHR A34-04
05-123-26572	LANDWEHR A34-03X
05-123-12858	FLACK 5-3
05-123-12878	HERBST 27-04
05-123-13188	STOUT 3-3
05-123-21647	GRANADOS 4-3
05-123-21915	STOUT 6-3
05-123-23549	FOSS 42-23
05-123-24185	DILLARD A04-04
05-123-24280	DILLARD USX AB29-07
05-123-24566	DILLARD USX AB29-17
05-123-24711	COCKROFT USX A11-08
05-123-26086	SHABLE USX AB11-06
05-123-26947	SHABLE USX AB11-03
05-123-30148	FAULK USX AB21-16P
05-123-30204	FAULK USX AB21-10P
05-123-30616	SHABLE USX AB11-02
05-123-32610	MOJACK USX AB21-15
05-123-32720	DILLARD USX AB29-02
05-123-13477	PETRIKIN A34-13
05-123-16653	WATSON E28-02
05-123-17028	STROH 35-04
05-123-21714	PETRIKIN A34-25
05-123-23474	HOWARD A27-05
05-123-23615	HOWARD A27-06
05-123-24214	MONFORT E30-21
05-123-24274	MONFORT E31-27
05-123-27297	MONFORT E30-15
05-123-27298	MONFORT E30-10
05-123-27299	MONFORT E30-23
05-123-27333	DUGGAN 04-45
05-123-28072	70 RANCH USX BB09-07
05-123-28076	70 RANCH USX BB09-09
05-123-31013	PIONEER Y08-03
05-123-32826	WATSON E28-17
05-123-12006	HOWARD 11-26EG
05-123-13673	NELSON 13-22
05-123-21750	HOWARD E26-17
05-123-24936	BURBACH 15-22
05-123-25080	BURBACH 15-23
05-123-26963	WELLS RANCH USX AA13-12
05-123-26966	WELLS RANCH USX AA13-06
05-123-27004	WELLS RANCH USX AA11-04
05-123-27007	WELLS RANCH USX AA11-06
05-123-29060	WELLS RANCH USX AA13-08
05-123-29240	WELLS RANCH USX AA13-03
05-123-29241	WELLS RANCH USX AA13-05
05-123-29309	WELLS RANCH USX AA13-11
05-123-31017	WELLS RANCH USX AE07-99HZ
05-123-32358	BASHOR PC AA17-18
05-123-32359	BASHOR PC AA17-02D
05-123-15765	STOUT 09-04
05-123-26888	NEW CACHE 8-24
05-123-07706	STATE 30
05-123-12752	LEHAN 03
05-123-12922	HOLMAN 14-01
05-123-13711	GEMINI C07-06
05-123-14173	COX PM C08-05
05-123-14175	FRY PM C18-4
05-123-14440	MILLER 24-01
05-123-16128	SPIKE STATE D36-03
05-123-16129	SPIKE STATE D36-04
05-123-16130	SPIKE STATE D36-05
05-123-16856	BOOTH 25-11

Appendix 2  
Noble Energy Alternative Mechanical Integrity Assurance Program

05-123-16948	ART RED D09-10
05-123-16949	ART RED D09-14
05-123-16950	ART RED D09-16
05-123-16997	UPRC 13-06J
05-123-17264	UPRC 13-03J
05-123-17325	UPRC 17-12Q
05-123-17369	BOOTH 25-14
05-123-18221	BLAKE B29-10X
05-123-19115	HSR GUTTERSEN 12-33
05-123-19244	FOOS C11-12
05-123-21032	CERVI 11-35
05-123-21858	ARIEL J07-14
05-123-21906	RTCHEY H27-04
05-123-21905	WILLIAMS B4-13X
05-123-22105	WILKINSON 01-35
05-123-22727	WILKINSON 01-34
05-123-23595	PEPLER 18-44
05-123-24134	WILKINSON 01-33
05-123-24190	WILKINSON 01-35
05-123-24281	GARAND USX AB19-11
05-123-24301	PEPLER 18-41
05-123-24536	FAULKNER USX AB29-06
05-123-24807	WILHITE 30-34
05-123-25517	MILLAGE C11-22
05-123-25881	WELLS RANCH USX AA35-06
05-123-26610	ROTH A13-16
05-123-26664	RTCHEY H27-25
05-123-26995	GWAA 02-43
05-123-27020	GWAA 02-42
05-123-27024	GUTTERSEN D09-24
05-123-27322	MAGNUSON 19-23
05-123-28106	BOOTH 25-15
05-123-29493	WELLS RANCH USX AA23-01
05-123-29668	CANNON X03-29
05-123-29972	70 RANCH 22-09
05-123-30904	WELLS RANCH USX AE31-99HZ
05-123-31016	WELLS RANCH USX AE29-99HZ
05-123-31164	GREEN USX EE13-08
05-123-31404	GUTTERSEN D16-28
05-123-31457	MAGNUSON USX AB19-15P
05-123-32998	GUTTERSEN STATE D22-24
05-123-34030	LAND USX Y31-01
05-123-10438	BB DRAW FEDERAL H04-04J (FNA-BDCC B UNIT 2)
05-123-10791	HANSCOME 02
05-123-11280	BERG 01
05-123-12467	HARLESS 17-02
05-123-13511	OCOMA C17-12
05-123-15554	SH FARMS C17-05
05-123-16718	WEBER 02
05-123-18090	MEINING 30-10I6
05-123-18198	HSR-GUTTERSEN B 6-21
05-123-19146	HSR SARCHET 2-24
05-123-19147	HSR TRAURIG 1-24
05-123-23248	CANNON H34-14
05-123-23251	CANNON H34-11
05-123-24078	FRANK 22-25
05-123-24413	UHRICH E27-01
05-123-25950	WELLS RANCH USX AA35-05
05-123-29099	MOSER H34-31
05-123-29204	HANSCOME C28-30D
05-123-29666	MOSER X03-28
05-123-07263	UPRR 62 PAN AM B 1
05-123-12655	RICHARDSON BR UT B 1
05-123-13561	BLISS 13-34
05-123-13626	MERCURE 06-01
05-123-16139	GITTLEIN BLUE D04-08
05-123-16701	SINGER E34-08
05-123-18774	BERG 15-1666
05-123-19243	FOOS C11-11

Appendix 2  
Noble Energy Alternative Mechanical Integrity Assurance Program

05-123-19245	FOOS C11-13
05-123-25766	WELLS RANCH USX AE31-04
05-123-25902	RITCHIE H34-29
05-123-32361	J & L FARMS 1-20
05-123-36738	CIRCLE RANCH FEDERAL LB07-62HN
05-123-11488	ALLISON 24-02
05-123-11797	STEWART 30-01
05-123-11834	WILLMAN H41-16
05-123-12525	KILDOW C31-01 (31-2)
05-123-12982	KEISER 02
05-123-13187	JOHNSON RC29-02
05-123-13252	UHRICH 05-27EG
05-123-13360	VICTOR C 29-16
05-123-13361	VICTOR C 29-13
05-123-13509	VICTOR C 19-16
05-123-13760	VICTOR C 19-11
05-123-14213	JOHNSON PM C29-08
05-123-14682	LOUSTALET 30-03
05-123-14876	MCGUIRK HOWELL C 32-4
05-123-14878	PTF C32-01
05-123-14892	PTF C32-09
05-123-14955	MCGUIRK HOWELL C 32-11
05-123-17313	OSH D 22-12
05-123-17314	OSH D 22-11
05-123-18199	HSR-GUTTERSEN B 3-21
05-123-19159	HSR BOOTH 8-2
05-123-19208	API 24-34
05-123-21445	WALTERS C31-19
05-123-21856	BROOMFIELD 18-19
05-123-21993	OSTER 20-19
05-123-22191	BROSNAHAN 14-30
05-123-24405	KILDOW C31- 7X
05-123-25285	O'CONNELL C31-21
05-123-25570	BOOTH USX EE23-16
05-123-25723	BROOMFIELD 24-35
05-123-25785	WELLS RANCH USX AE29-14
05-123-25808	WELLS RANCH USX AA23-08
05-123-25963	JOHNSON C29-18
05-123-26059	O'CONNELL C31-18
05-123-26107	70 RANCH USX BB35-03
05-123-26808	WELLS RANCH AA21-16
05-123-26892	WELLS RANCH USX AE29-12
05-123-29491	WELLS RANCH USX AA23-07
05-123-31063	WELLS RANCH USX AA11-16P
05-123-31297	WALCKER USX AB01-16P
05-123-33202	WELLS RANCH AA12-08
05-123-12538	WILMOTH 06-02
05-123-13155	LINDSAY C33-02
05-123-14879	PTF C32-08
05-123-17001	PARKER BLUE D23-03J
05-123-17514	RITER C18-16
05-123-17524	DAN 11-22
05-123-18031	SPOMER 32-16H6
05-123-19100	HSR-DECHANT FARMS 10-36
05-123-21907	RITCHIE H27-03
05-123-24340	CECIL USX A01-14
05-123-24710	COCKROFT USX A11-03
05-123-26088	DILLARD USX AB05-16
05-123-27122	DINNER 13-35
05-123-30107	WELD COUNTY USX AB19-08P
05-123-30265	WELD COUNTY USX AB19-07PD
05-123-32944	PETTINGER USX AB27-01
05-123-32946	PETTINGER USX AB27-02
05-123-10930	WCL 34-5
05-123-11114	GEHRING 01
05-123-11523	ARD 11-06
05-123-11921	LEY 01
05-123-12537	WILMOTH 06-01



Appendix 2  
Noble Energy Alternative Mechanical Integrity Assurance Program

05-123-12676	WILMOTH 6-3
05-123-13180	KNAUB-BETZ 2-14
05-123-13183	DIETRICH RC07-01
05-123-13492	OCOMA C17-09
05-123-13493	OCOMA C17-15
05-123-13512	OCOMA C17-14
05-123-13708	GEMINI C07-03
05-123-13769	OCOMA C17-10
05-123-13771	OCOMA C17-16
05-123-13787	LEHAN 1
05-123-13790	OCOMA C17-13
05-123-14174	COX PMC08-06
05-123-14211	HARLESS PMC17-08
05-123-15480	DUNCAN D 20-10
05-123-17359	DIETRICH 06-10
05-123-17448	DIETRICH 06-16
05-123-18371	RUFF 08-0114
05-123-18511	GEHRING 08-0914
05-123-21728	OCOMA C17-23
05-123-22278	RUFF C08-01
05-123-22881	BOOTH N25-12
05-123-24010	DIETRICH C06-23
05-123-24345	ANGELA C17-25
05-123-24592	DYER USX A03-17
05-123-24844	LOCKMAN 04-14
05-123-25126	ROBERT FEDERAL 34-12
05-123-25419	GALE C03-25
05-123-25628	WELLS RANCH AA26-14
05-123-26157	DYER USX A03-02
05-123-26189	DYER USX A03-08
05-123-26253	DYER USX A03-01
05-123-27307	GEHRING C08-10X
05-123-28013	SHABLE 14-25
05-123-28035	SHABLE 14-24
05-123-30111	KOHLHOFF USX AB17-11P
05-123-30116	KOHLHOFF USX AB17-10P
05-123-30552	KOHLHOFF USX AB21-07P
05-123-31171	WALCKER USX AB01-14P
05-123-15643	HSR-SLOAN 15-21A
05-123-15802	UPRC 23-12A
05-123-15896	WEIDENKELLER 01-22
05-123-17481	DUNCAN D 11-14
05-123-18020	TIMMERMAN 13-13
05-123-18394	SCHISSLER 01-11
05-123-20407	MARTINEZ 27-33
05-123-21608	TIMMERMAN 14-13
05-123-22190	BLAKE B29-23
05-123-22761	TIMMERMAN 23-13
05-123-27115	FRONT RANGE D09-28
05-123-27306	KARCH D04-17
05-123-29142	THOMPSON C28-24
05-123-29527	WELLS RANCH USX AA35-03
05-123-31217	ALOYSIUS C34-30D
05-123-12504	COLTRANE IGO 01
05-123-12604	SMITH 02
05-123-12749	SPOMER 9-32
05-123-13616	LEHFELDT C27-04
05-123-15429	LEHFELDT C27-05
05-123-16135	KARCH BLUE D10- 7
05-123-16315	LDS WHITE D19-10
05-123-16316	LDS WHITE D19-15
05-123-16317	LDS WHITE D19-16
05-123-16363	KORI J19-15
05-123-16442	UPRC 29-08C
05-123-16459	CAMENISCH-SUPREME C 5-3
05-123-16522	CAMENISCH-STRAIGHT 13-34
05-123-16700	SINGER E34-01
05-123-17019	PARKER BLUE D23-13

Appendix 2  
Noble Energy Alternative Mechanical Integrity Assurance Program

05-123-17329	LOWER LATHAM 03-08G
05-123-17594	LUPRC 27-04C
05-123-17629	GURTLER 24-12J
05-123-17630	GURTLER 24-13J
05-123-17994	KORI J19-10
05-123-17999	KORI J19-16
05-123-18194	WIEDEMAN 08-12H6
05-123-18373	IGO 28-03H6
05-123-18660	WIEDEMAN 08-11H6
05-123-19438	BLEHM N26-03
05-123-20564	HSR-LUNDVALL 8-19
05-123-22680	BOOTH N25-11
05-123-22719	KORI J19-14
05-123-22722	KORI J19-23
05-123-22881	SCHROEDER 23-31
05-123-24179	WASTE MANAGEMENT D35-09
05-123-24614	ECKHARDT B35-33
05-123-25078	WELLS RANCH USX AA35-19
05-123-25396	MCWILLIAMS D30-22
05-123-25426	MCWILLIAMS D29-32
05-123-25880	WELLS RANCH USX AA35-04
05-123-27282	SCHROEDER 23-33
05-123-28014	SHABLE 14-22
05-123-29485	NCLP PC AA04-11
05-123-30197	BOOTH USX EE23-07P
05-123-30199	BOOTH USX EE23-08P
05-123-31160	GREEN USX EE13-06
05-123-10679	REINICK, ROLAND 1-10-4-64
05-123-10753	DONES 01
05-123-10786	ECKHARDT 02
05-123-11018	BRANTNER 2
05-123-11103	BLEHM 03
05-123-11117	OPDYKE HINKLE 01
05-123-11824	LEONARD 03
05-123-11826	THOUTT 02
05-123-12032	MACBAIN 01
05-123-12270	LEHFELDT C27-16
05-123-12282	KISSLER 03-01
05-123-12347	NOVACEK 01
05-123-12496	HENRY A-12
05-123-12754	KEATON 8-26
05-123-12767	LANE 01
05-123-13263	BEEBE DRAW RG26-16
05-123-13344	KISSLER 03-02
05-123-13352	OCOMA B31-16
05-123-13353	OCOMA B31-09
05-123-13390	OCOMA C07-16
05-123-13411	BOHLENDER D20-03
05-123-13419	MENONI B30-02
05-123-13422	MENONI B30-07
05-123-13584	KAMMERZELL 13-04
05-123-13706	KAMMERZELL 16-06
05-123-13851	LEHFELDT C27-15
05-123-14052	SUN SOIL PMB31-08
05-123-14122	MONFORT PM K03-14
05-123-14156	WEBER PMK16-10
05-123-14216	DOLL PMF23-05
05-123-14519	REICHERT 09-07
05-123-14771	ROMERO 34-02
05-123-15217	DINNER FEDERAL 42-14 #1
05-123-15490	DUNCAN D 11-12
05-123-15523	KENOUE 29-15
05-123-15647	DALBET D22-05
05-123-15669	DALBET D22-06
05-123-15777	DUNCAN D 11-5
05-123-15787	LATHAM 03-34
05-123-15848	BOHLENDER D20- 2J
05-123-15936	DUNCAN D 11-13

Appendix 2  
Noble Energy Alternative Mechanical Integrity Assurance Program

05-123-15991	SPIKE STATE D28-11
05-123-16035	SPIKE STATE D14-15
05-123-16333	TODD 09-12
05-123-16506	DALBEY D13-13
05-123-16507	DALBEY D13-11
05-123-16536	KYLE WHITE D27-08
05-123-16669	BOHLENDER D20-04
05-123-16702	SINGER E34-09
05-123-16721	RIVA BLUE D31-11
05-123-16722	RIVA BLUE D31-12
05-123-16824	RAISLEY 44-27
05-123-16825	RAISLEY 34-27
05-123-17123	HAGEN 09-09
05-123-17124	HAGEN 09-10
05-123-17125	HAGEN 09-15
05-123-17131	ESTES D27-07
05-123-17161	HSR-LUBBY 11-11
05-123-17162	HSR-BOST 12-11
05-123-17163	HSR-KATE 13-11
05-123-17164	HSR-NICHOLAS 14-11
05-123-17341	LANG 15-14
05-123-17502	HANSCOME 28-04
05-123-17540	DUNCAN D 11-7
05-123-17580	ROSKOP 10-01
05-123-17582	ROSKOP 10-07
05-123-17583	ROSKOP 10-08
05-123-17586	ECKAS 15-104
05-123-17626	ALLES 33-07HS
05-123-17689	OSTER 03-104
05-123-17841	OSTER 03-164
05-123-17993	KORI J19-09
05-123-18250	HANSCOME 11-0415
05-123-18986	KC B12-10
05-123-20250	MONFORT 04-10
05-123-20328	LEE G10-12X
05-123-21332	OCOMA C07-23
05-123-21699	GUTTERSEN 10-20
05-123-21708	SPOMER 133-25
05-123-22168	HIGHLAND 12-20
05-123-22194	HANSCOME G11-04
05-123-22641	MILLAGE C11-07
05-123-22718	KORI J19-11
05-123-22720	KORI J19-13
05-123-22721	KORI J19-12
05-123-22933	MARIE D04-23
05-123-23045	FRICO 12-11
05-123-23230	KORI J19-25
05-123-23361	BLEHM N26-19
05-123-23745	NOVACEK C28-07
05-123-23838	WORRIES 21-14
05-123-24139	FRICO 23-11
05-123-24372	GABEL USX A821-11
05-123-24523	STOCKLEY C15-25
05-123-24624	HANSCOME C28-19
05-123-24625	HERBST C27-19
05-123-24637	FAULKNER USX A829-25
05-123-24673	STROHAUER 27-14
05-123-24703	GIBBS F28-17
05-123-24794	WASTE MANAGEMENT USX Y 03-09
05-123-24935	ROSKOP C10-17
05-123-25057	GUTTERSEN USX D017-19
05-123-25088	SPIKE D14-09
05-123-25091	SPIKE D14-16
05-123-25394	MCWILLIAMS D30-21
05-123-25520	TOOL F35-25
05-123-25522	TOOL G02-19
05-123-25525	TOOL G02-29
05-123-25527	TOOL G02-17

Appendix 2  
Noble Energy Alternative Mechanical Integrity Assurance Program

05-123-25757	HOUNDSKEEPER H01-27
05-123-25800	HOUNDSKEEPER H01-17
05-123-26479	MOSER H34-18
05-123-26531	ERICKSON A04-12
05-123-26545	MOSER H34-20
05-123-26654	HANSCOME C28-20
05-123-26875	MILLAGE C15-24
05-123-27182	OSTER C03-23
05-123-27281	NOVACEK C28-17
05-123-27323	ALTER C09-23
05-123-28199	GUTTERSEN STATE D14-23
05-123-29200	BELL B29-22D
05-123-29307	CARLSON J33-31D
05-123-29308	CARLSON J33-30D
05-123-29650	WEBER K16-24
05-123-29853	ZABKA K20-20
05-123-29907	ROSKOP C11-31D
05-123-30685	FRICO 33-11
05-123-30694	THISTLE DOWN B31-17
05-123-30785	MILLAGE C11-18
05-123-31049	WELLS RANCH USX AA11-10P
05-123-31403	FRICO 9-10A
05-123-31416	FRICO 38-10
05-123-31715	GABEL USX AB21-13P
05-123-31910	GUTTERSEN D03-33D
05-123-32601	GABEL USX AB21-14
05-123-33489	WYSCAVER USX CC05-25
05-123-25746	FEDERAL CB04-24
05-123-07639	SPIKE STATE CC06-11J (FKA EPH CORP)
05-123-10667	POLLOCK-HADDIX 34-01
05-123-10687	FRANK 01-13
05-123-10820	CONNELL 02 (AKA04-02)
05-123-10832	CONNELL 03 (AKA 04-03)
05-123-10834	SITZMAN 02 (AKA 4-2)
05-123-10933	HERBST 1-22-04-64
05-123-11648	KLEIN 01-19-05-64
05-123-11650	REXFORD 01
05-123-11651	FANNY B01
05-123-11735	CONNELL 14-04
05-123-11875	FLACK 01
05-123-11895	WIEDEMAN 01
05-123-11922	SMITH 01
05-123-11953	LATHAM 03-01
05-123-12018	LYMAN 01
05-123-12105	VOLKENS 02
05-123-12111	MCCLELLAN 04-01
05-123-12112	BOHLENDER 13-01
05-123-12187	VERN JOHNSON 01-A
05-123-12350	WALKER 02
05-123-12503	ZIONS FNB 01
05-123-12518	CARLSON J32-08
05-123-12807	WATKINS 13-01
05-123-12860	SPOMER 7-32
05-123-12873	FRANK 04
05-123-12980	JOHNSON 09-11
05-123-13102	SCHAFER K21-08
05-123-13175	KAWATA 2-16
05-123-13213	SHANNON 14-03
05-123-13235	BALBOA C20-01
05-123-13236	SHANNON 14-04
05-123-13368	STATE SCHMIDT 36-10
05-123-13394	OCOMA B31-10
05-123-13395	OCOMA B31-15
05-123-13424	MENONI B30-15
05-123-13425	MENONI B30-16
05-123-13650	JEPSEN 4
05-123-13672	SPOMER 10-32
05-123-13871	GEMINI FEDERAL K01-15

Appendix 2  
Noble Energy Alternative Mechanical Integrity Assurance Program

05-123-13872	GEMINI FEDERAL K01-16
05-123-13975	DANIELS PM K 5-10
05-123-14002	WIEDENMAN PMJ28-02
05-123-14004	LESSER BCJ33-01
05-123-14005	LESSER PMJ33-02
05-123-14006	LESSER PMJ33-07
05-123-14060	VETTING PMF26-02
05-123-14061	VETTING PMF26-07
05-123-14073	BOULTER I1-02
05-123-14118	JOHNSON-PM F11-12
05-123-14518	WALKER I7-03
05-123-14552	FANNY B34-04
05-123-14664	HUNTSMAN G 13-10
05-123-14812	FRED ARENS 06
05-123-15177	GEMINI K01-11
05-123-15197	GEMINI K01-12
05-123-15227	UPRC I3-08F
05-123-15237	UPRC I3-07F
05-123-15307	SCHAFER K21-07
05-123-15570	BALBOA C20-04
05-123-15642	DALBEY D24-10
05-123-15654	UPRC 27-11C
05-123-15655	UPRC 27-12C
05-123-15811	ELISE STATE C24-11
05-123-15812	SPIKE STATE C24-12
05-123-15814	SPIKE STATE C24-14
05-123-15911	SPIKE STATE D16-09
05-123-15912	SPIKE STATE D16-10
05-123-15917	SPIKE STATE D16-16
05-123-16065	SPIKE STATE D22-08
05-123-16095	BROWN 44-24
05-123-16187	DALBEY D24-15
05-123-16321	HUNTSMAN G 13-9
05-123-16488	BROWN 33-24
05-123-16489	BROWN 43-24
05-123-16493	HAMILTON 25-16B
05-123-16494	HAMILTON 25-08B
05-123-16497	HAMILTON 25-15B
05-123-16763	UPRC 01-14J5
05-123-16764	UPRC 01-13J
05-123-16971	NICHOLS 35-14
05-123-16977	TANIA BLUE D02-09
05-123-16978	TANIA BLUE D02-10
05-123-16979	TANIA BLUE D02-15
05-123-16980	TANIA BLUE D02-16
05-123-16990	REINICK 10-05
05-123-17002	PARKER BLUE D23-10
05-123-17003	PARKER BLUE D23-11
05-123-17004	PARKER BLUE D23-14
05-123-17005	PARKER BLUE D23-15
05-123-17018	PARKER BLUE D23-09
05-123-17225	SPIKE STATE D12-03
05-123-17226	SPIKE STATE D12-04
05-123-17227	SPIKE STATE D12-05
05-123-17231	DL PHILLIPS 24-23
05-123-17235	JOHNSTON 22-04
05-123-17411	THOMPSON 28-10
05-123-17487	MERCURE 05-14
05-123-17494	UPRC I3-10J
05-123-17521	DUNCAN D 11-11
05-123-17538	UPRC 27-03C
05-123-17545	DUNCAN D 11-6
05-123-17588	LEONARD 21-10
05-123-17590	ARENS 11-09
05-123-17625	BACKUS 04-16
05-123-17628	GURTLER 24-11J
05-123-17736	WATKINS 13-05
05-123-17746	HERBST 22-16

Appendix 2  
Noble Energy Alternative Mechanical Integrity Assurance Program

05-123-17751	MERCURE 08-0615
05-123-17780	JEPSEN 23-2
05-123-17781	UPRC 13-09J5
05-123-17786	BOHLENDER 22-14
05-123-17791	STATE 16-0314
05-123-17792	STATE 16-0714
05-123-17793	STATE 16-0814
05-123-17819	STATE 16-0614
05-123-17896	STATE 16-1214
05-123-17897	API 20-0414
05-123-17981	LANE 34-0214
05-123-17984	UPRC 05-316
05-123-18022	FLACK 33-05H6
05-123-18029	WIEDEMAN 28-01H6
05-123-18030	CARLSON 32-01H6
05-123-18174	DPG BIRD FARM 01-15H5
05-123-18368	PHILLIPS D L 24-21
05-123-18369	DL PHILLIPS 24-22
05-123-18402	STATE 16-0414
05-123-18519	WESTERN SUGAR 04-43
05-123-18521	FRANK 6-14
05-123-18531	LESSER 133-07A
05-123-18551	KALLAS 04-42
05-123-18671	UPV 35-02104
05-123-18692	WIST 28-11H6
05-123-19008	STATE CLARK 36-21
05-123-19009	STATE CLARK 36-22
05-123-19116	HSR GUTTERSEN 13-33
05-123-19206	FRANK 13-21
05-123-19237	ANDERSON 04-44
05-123-19239	ZACH C11-03
05-123-19240	ZACH C11-04
05-123-19242	ZACH C11-06
05-123-19249	HOWARD 04-42
05-123-19879	PHILLIPS D L 24-24
05-123-20099	KALLAS 04-41
05-123-20664	BERNHARDT 7-1
05-123-21431	BLISS 14-3
05-123-21572	HETTINGER 24-11
05-123-21808	KLEIN B19-04
05-123-21929	SMITH C09-19
05-123-21971	JEPSEN 5-2
05-123-22188	GUTTERSEN STATE D12-02II
05-123-22195	GUTTERSEN STATE D12-08II
05-123-22197	GUTTERSEN STATE D12-03II
05-123-22198	GUTTERSEN STATE D12-07II
05-123-22440	OCOMA B31-23
05-123-22706	BOOTH N25-25
05-123-22708	BOOTH N25-13
05-123-22791	GUTTERSEN STATE D12-19
05-123-22818	TANIA D02-23
05-123-23198	MOSER H34-09
05-123-23225	MILLAGE C11-01
05-123-23299	JEPSEN 22-2C
05-123-23344	BLEHM N26-08
05-123-23397	MILLAGE C11-08
05-123-23404	GRACIE 127-19X
05-123-23455	FRANK C12-17
05-123-23714	DIGGIN STATE D16-23
05-123-23715	DIGGIN STATE D16-07
05-123-23731	GUTTLER H24-14
05-123-23739	THOMPSON C28-25
05-123-23740	KARAKAKES H13-23
05-123-23962	STATE SCHMIDT 36-45
05-123-24259	STROH H12-16
05-123-24530	CONNELL C04-25
05-123-24551	MILLAGE C11-17
05-123-24613	ECKHARDT B35-12

Appendix 2  
Noble Energy Alternative Mechanical Integrity Assurance Program

05-123-24635	ECHHARDT B35-13
05-123-25061	KARAKAKES H13-20
05-123-25181	SITZMAN C04-22
05-123-25287	GEISERT F02-16
05-123-25305	VROOMAN C22-23
05-123-25461	BASEBALL K11-19
05-123-25506	SLEDGE C09-31
05-123-25508	SLEDGE C09-29
05-123-25509	SLEDGE C09-28
05-123-25556	RYAN STATE C16-01
05-123-25580	SATER C15-20
05-123-25586	SLEDGE C09-30
05-123-25589	WELLS RANCH AA26-09
05-123-25604	SAMUEL J07-09
05-123-25605	SAMUEL J07-15
05-123-25606	SAMUEL J07-16
05-123-25607	SAMUEL J07-23
05-123-25639	FRIDGE USX H13-22
05-123-25663	WELLS RANCH AA26-16
05-123-25683	DPG F01-33
05-123-25693	MURHEAD 01-35
05-123-25702	ELISE STATE C24-21
05-123-25704	ELISE STATE C24-24
05-123-25769	BERNHARDT 001-25
05-123-25875	DPG F01-23
05-123-25878	PHILLIPS PC N24-19
05-123-25903	RITCHEY H34-28
05-123-25921	CONAGRA B29-33
05-123-26341	WIEST 128-25
05-123-26527	WIEDEMAN 128-17
05-123-26528	SHELTON H01-23
05-123-26546	SHELTON H01-12X
05-123-26557	STROHAUER F33-23
05-123-26660	FRANK 13-25
05-123-26708	PREBISH C20-19
05-123-26873	CONAGRA B30-23XD
05-123-26988	STONE RIDGE 24-15
05-123-27125	ZABKA 02-25
05-123-27157	BOOTH C35-01
05-123-27170	KISSLER K21-27D
05-123-27180	BOOTH C35-07
05-123-27181	BOOTH C35-08
05-123-27394	BRUNTZ G16-23
05-123-28020	MOSSBERG J33-27
05-123-28026	ZABKA 2-24
05-123-28027	MOSSBERG J33-28
05-123-29000	BOOTH C11-19
05-123-29061	WELLS RANCH USX AA13-09
05-123-29151	HANSCOME C21-24
05-123-29244	GUTTERSEN STATE D16-15X
05-123-29278	BRETHAUER C14-27
05-123-29300	WELLS RANCH USX AA13-15
05-123-29305	WELLS RANCH USX AA13-16
05-123-29316	BOOTH C35-27
05-123-29345	PHILLIPS PC N24-29D
05-123-29412	WELLS RANCH USX AA13-10
05-123-29560	KALLAS 04-45
05-123-29564	FRANK C12-22
05-123-29908	PHILLIPS 24-2-20D
05-123-30079	ALLES F33-18
05-123-30223	HANSCOME C29-27D
05-123-30495	CSU E35-03D
05-123-30500	DOLL F23-20D
05-123-30673	WELLS RANCH AA26-13X
05-123-30687	GUTTERSEN STATE D16-22D
05-123-30690	GUTTERSEN STATE D15-32
05-123-30750	GUTTERSEN STATE D15-33
05-123-30788	SCHISSLER G04-27D



Appendix 2  
Noble Energy Alternative Mechanical Integrity Assurance Program

05-123-32070	CRICKET C22-300
05-123-32134	COLEMAN C22-21D
05-123-32375	ANDERSON PC F35-23
05-123-32438	DECHANT STATE H36-18D
05-123-33128	GUTTERSEN D23-20
05-123-13960	LILLI UNIT 03-10
05-123-09598	MCWILLIAMS 01
05-123-10090	BRUNTZ 01
05-123-10553	EASTON 12-01
05-123-11036	BACON 2
05-123-11327	HAYS 31-01H5
05-123-11708	ANGELINA ROMERO 01
05-123-11712	FRANKLIN 02
05-123-11920	MINOR 01
05-123-11983	SWINNEY 1-15
05-123-12005	PEARSON 1
05-123-12246	ALLES 03
05-123-12331	MONFORT 5-10
05-123-12349	FRED ARENS 03
05-123-12444	SCHANK 01
05-123-12617	SMITH 03
05-123-12728	ANGELINA ROMERO 02
05-123-12940	PEPPLER 16-35
05-123-13031	STROH N35-16
05-123-13103	LORENZ UPRR 31-27 2
05-123-13247	BEEBE DRAW RG26-15
05-123-13260	BEEBE DRAW RG26-10
05-123-13351	OCOMA B29-11
05-123-13392	OCOMA B29-12
05-123-13393	OCOMA B29-14
05-123-13546	STATE RG36-04
05-123-13603	OCOMA II C31-16
05-123-13629	REICHERT 09-05
05-123-13697	GEMINI B29-05
05-123-13698	GEMINI B29-06
05-123-13734	WHITNEY 1-22
05-123-13833	OCOMA II C31-09
05-123-13834	OCOMA II C31-10
05-123-13835	OCOMA II C31-15
05-123-13889	BRETHAUER 11-01
05-123-13919	HENRY 05-04
05-123-13925	HENRY 05-03
05-123-14064	LOPRESTO PMK02-02
05-123-14120	FORD PMF26-16
05-123-14121	MONFORT PM K03-13
05-123-14941	SCHMIDT 30-05G
05-123-15057	UPRC 21-11G
05-123-15058	UPRC 21-14G
05-123-15175	UPRC 07-16G
05-123-15367	CARLSON 23-07F
05-123-15384	RUPERT G 23-9
05-123-15393	HAMILTON 25-13B
05-123-15394	HAMILTON 25-14B
05-123-15547	RUPERT G 23-16
05-123-15693	GUNTHER B18-01
05-123-16052	SCHMIDT 30-11G
05-123-16064	SPIKE ST GWS D22-07
05-123-16068	SPIKE STATE D22-04J
05-123-16069	SPIKE STATE D22-15
05-123-16084	DABNEY G 25-3
05-123-16085	DABNEY G 25-6
05-123-16106	LOWER LATHAM 35-15B
05-123-16134	KARCH BLUE D10-02
05-123-16136	KARCH BLUE D10-08
05-123-16137	KARCH BLUE D04-02
05-123-16146	SCHMIDT 25-08F
05-123-16147	SCHMIDT 25-01F
05-123-16149	SCHMIDT 30-12G

Appendix 2  
Noble Energy Alternative Mechanical Integrity Assurance Program

05-123-16185	MCWILLIAMS 15-32
05-123-16191	KARCH BLUE D25-08
05-123-16193	API 33-11
05-123-16194	API 43-11
05-123-16201	SPIKE STATE CC06-12
05-123-16202	SPIKE STATE CC 06-13
05-123-16203	SPIKE STATE CC06-14
05-123-16247	KARCH BLUE D25-07
05-123-16260	UPRC 07-10G
05-123-16261	UPRC 07-15G
05-123-16326	UPRC 21-12G
05-123-16327	UPRC 21-13G
05-123-16329	CARLSON 23-01F
05-123-16341	UPRC 27-11F
05-123-16342	UPRC 27-14F
05-123-16343	UPRC 27-15F
05-123-16461	MEYERS 34-10
05-123-16474	DINNER FEDERAL 13-04F
05-123-16495	HAMILTON 25-11B
05-123-16496	HAMILTON 25-12B
05-123-16502	DINNER FEDERAL 13-03F
05-123-16528	STROMBERGER FEDERAL 33-12
05-123-16611	RUMSEY 04-09
05-123-16659	MEAD 7-10
05-123-16712	SWINNEY 2
05-123-16731	DOS RIOS 41-34
05-123-16737	SPIKE STATE H36- 2J
05-123-16858	MILLER B32-06
05-123-16914	MARKUS 28-11
05-123-16987	FANNY 834-15
05-123-17044	STEWART 07-11G
05-123-17086	UPRC 13-12J
05-123-17127	LOWER LATHAM 35-11B
05-123-17236	BRETHAUER 11-15
05-123-17246	LOWER LATHAM 03-02G
05-123-17247	LOWER LATHAM 03-01G
05-123-17339	LOWER LATHAM 03-07G
05-123-17352	FRANKLIN 28-09
05-123-17354	LOWER LATHAM 34-16B
05-123-17525	HSR OSTER 13-22
05-123-17530	AMIGO FARMS 01-12
05-123-17584	WATKINS 12-09
05-123-17753	EASTON 12-03I5
05-123-17849	OGG 11-28
05-123-17894	SITZMAN 04-014
05-123-19170	HSR-GUTTERSEN-STATE 10-28
05-123-19246	FOOS C11-14
05-123-20445	RYDGREN 08-31
05-123-21407	STROH 002-01
05-123-21607	TIMMERMAN 15-13
05-123-22113	BLEHM N26-01
05-123-22169	SHELTON 18-25XX
05-123-22172	TIMMERMAN 20-13
05-123-22193	OGG 5-28
05-123-22215	OCOMA B29-25
05-123-22248	BOULTER 03-34
05-123-22892	EASTON G12-19
05-123-23012	OCOMA C31-23
05-123-23036	BLEHM N26-17
05-123-23064	GEMINI B29-19
05-123-23204	MOSER H34-23
05-123-23217	MOSER H34-16
05-123-23389	FOOS C11-25
05-123-23692	KANGA STATE D36-01JJ
05-123-24239	WASTE MANAGEMENT D35-15
05-123-24295	JEPSEN G21-25
05-123-24474	LOLOFF B35-20
05-123-24462	STROMBERGER FEDERAL 23-12

Appendix 2  
Noble Energy Alternative Mechanical Integrity Assurance Program

05-123-25150	JERKE G07-21
05-123-25300	STEWART G07-25
05-123-25518	USED G02-20
05-123-25521	TOOL F35-24
05-123-25569	DPG F01-13
05-123-25649	HELDT B29-20
05-123-25680	FAIRBANKS B29-31
05-123-25759	HELDT B29-21
05-123-25786	MCWILLIAMS 15-35
05-123-25799	HELDT B29-32
05-123-26217	WILMOTH C 4-24
05-123-26232	WILMOTH C09-27
05-123-26480	MOSER H35-32
05-123-26481	MOSER H35-33
05-123-26620	HAMILTON F25-24
05-123-26655	HAMILTON F25-33
05-123-27189	MUIRHEAD 01-03-23
05-123-28053	DPG F12-28
05-123-28085	SADIE NATOR G11-24
05-123-28099	BRETHAUER C11-21
05-123-28104	HOWIE NATOR G11-22
05-123-28161	FOOS C11-20
05-123-28195	CHACON H13-18
05-123-29077	PHILLIPS PC N24-31D
05-123-29432	BRETHAUER C11-23
05-123-29497	NCLP PC AA04-13
05-123-29795	LDS F01-27
05-123-29892	SCHMIDT G30-33
05-123-29909	EMBREE C10-20D
05-123-29944	SCHMIDT G30-25
05-123-30087	FOOS C11-32
05-123-30359	SCHMIDT G30-30D
05-123-30732	GUTTERSEN D15-18
05-123-31880	CODY D03-28
05-123-32149	AMEN PC D06-29
05-123-32827	EASTON G12-32D
05-123-32939	KARCH STATE D10-22
05-123-32941	GUTTERSEN STATE D22-18
05-123-32997	GUTTERSEN STATE D22-22
05-123-33621	SPIKE STATE D10-21D
05-123-33662	GUTTERSEN D25-17
05-123-34881	STEWART G07-20D
05-123-14023	LILLI UNIT 12-06
05-123-20160	LILLI FIELD UNIT 03-07
05-123-07663	BULLARD 41-26
05-123-11487	FERGUSON 01-35
05-123-11586	NIKOLORIC 11-05 (AKA 5-1)
05-123-11713	GIBBS 02
05-123-11862	LOUSTALET 01
05-123-12637	REINICK 03
05-123-13075	DUPPER RG26-05
05-123-13987	WIEDEMAN PMJ21-10
05-123-14170	SEYMOUR MENDELL 22-01
05-123-15123	MARIE D04-09
05-123-15345	JEPSEN 13-15F
05-123-15346	JEPSEN 13-10F
05-123-15347	JEPSEN 13-09F
05-123-15395	DOROUGH G07-07
05-123-15502	HSR-VICKI 10-23
05-123-15603	DOROUGH G07-02
05-123-15644	DALBEY D14-06
05-123-15744	STROH H12-13
05-123-16196	EWING 43-10
05-123-16369	CALLY WHITE D15-01
05-123-16386	EWING 33-15
05-123-16563	EWING FEDERAL 31-14
05-123-16784	GIBBS 04
05-123-16961	PARKER RED D23-03

Appendix 2  
Noble Energy Alternative Mechanical Integrity Assurance Program

05-123-17085	UPRC 13-051
05-123-17360	REINICK 09-07
05-123-17414	THOMPSON 28-16
05-123-17482	DALBEY D14-03
05-123-17644	LIGETT 18-04
05-123-17690	STROMBERGER 24-06H5
05-123-17936	WIEDEMAN 21-15H6
05-123-17985	RUMSEY 03-1216
05-123-18111	LUNDVALL 30-11H6
05-123-18251	DPG BIRD FARM 12-01H5
05-123-18509	LEONARD 21-1614
05-123-18971	ADAM RED D26-11
05-123-19874	FRANK 22-21
05-123-21406	STROH 002-08
05-123-21443	BULLARD 31-26
05-123-21828	EMBRICK C10-19
05-123-22536	GIBBS F28-19D
05-123-24277	LAMP H26-22
05-123-24369	LOLOFF B35-19
05-123-24522	NICMOTH C05-19
05-123-24605	EWING 37-10
05-123-24762	GIBBS F28-18
05-123-24840	ROBERT 28-14
05-123-24845	ROBERT FEDERAL 21-14
05-123-25438	SHELTON H12-29
05-123-25523	TOOL G02-18
05-123-25524	TOOL G02-28
05-123-25630	WELLS RANCH AA26-12
05-123-25664	WELLS RANCH AA26-15
05-123-25801	WELLS RANCH USX AA23-10
05-123-26150	REINICK C09-18
05-123-26158	REINICK C10-31
05-123-26159	REINICK C09-22
05-123-27403	LAMP H26-08
05-123-28003	THOMPSON C28-23
05-123-29037	THOMPSON C28-22
05-123-29082	GUTTERSEN STATE D10-24
05-123-29488	WELLS RANCH USX AA23-09
05-123-29785	DPG F12-27X
05-123-30259	GUTTERSEN STATE D15-27
05-123-30498	GUTTERSEN D15-28
05-123-30866	GUTTERSEN STATE D16-32D
05-123-30878	GUTTERSEN STATE D16-33
05-123-32161	HOFF PC D06-28D
05-123-32465	DECHANT STATE H36-19
05-123-33206	WELLS RANCH AA12-09
05-123-33987	GUTTERSEN D04-31D
05-123-34094	GUTTERSEN D04-69HN
05-123-34544	GUTTERSEN D14-32
05-123-34562	NOVACEK C28-27D
05-123-13691	LULU UNIT 16-6
05-123-11037	JEWELL 01
05-123-12188	CHESNUT G22-03
05-123-13818	TREBOR B11-09
05-123-13986	WIEDEMAN PM121-09
05-123-15284	HSR FISCHER 6-23
05-123-15614	HSR-BRENLY 6-21
05-123-15615	HSR-RENICK 3-21
05-123-16549	HSR-TAYLOR 16-21
05-123-16839	MERRITT 11-34
05-123-16989	LOWER LATHAM 35-10B
05-123-17087	UPRC 13-13J
05-123-17326	LOWER LATHAM 02-02G
05-123-17328	LOWER LATHAM 02-07G
05-123-17605	HSR-ARISTOCRAT 12-34
05-123-17815	ECKHARDT 33-15
05-123-18411	LDS A 4-8
05-123-18496	UPRC 31-12H6

Appendix 2  
Noble Energy Alternative Mechanical Integrity Assurance Program

05-123-18974	ADAM RED D26-14
05-123-22435	MILLAGE C11-02
05-123-24008	SEVENDUST STATE D22-01
05-123-24189	WASTE MANAGEMENT D35-14
05-123-24258	FOY Y20- 6
05-123-25303	ALLES F33-22
05-123-25739	WELLS RANCH USX AE19-14
05-123-26075	MOSER 22-35
05-123-26192	PEPPLER 24-32
05-123-26809	WELLS RANCH AA21-09
05-123-26810	WELLS RANCH AA21-15
05-123-29389	MCWILLIAMS 15-03-17
05-123-30855	ROMERO G03-29D
05-123-33985	GUTTERSEN D04-30D
05-123-11285	MONFORT GILCREST K09-13
05-123-13904	BEEBE DRAW 11-2
05-123-15427	ARENS 15-09G
05-123-15428	ARENS 15-16G
05-123-16330	MOSIER 23-12F
05-123-16963	PARKER RED D23-05
05-123-17045	KNAUB 04-32
05-123-19121	HSR-GUTTERSEN 5-33
05-123-22313	INDORF 17-35
05-123-24562	FOSS USX AA05-25
05-123-25347	ENGLAND 08-35
05-123-25526	TOOL G02-27
05-123-25730	PATRIOT 816-24
05-123-25752	WELLS RANCH USX AA25-14
05-123-26327	FOSS USX AA05-11
05-123-26805	WELLS RANCH AA21-12
05-123-26811	WELLS RANCH AA21-10
05-123-27160	ENGLAND 08-03-17
05-123-28034	SHABLE 14-23
05-123-31318	SHABLE USX AB11-12P
05-123-09387	UPRR 21 PAN AM F 1
05-123-10552	FRED ARENS 11-01
05-123-10736	MOSER #01
05-123-11079	THOUTT 01
05-123-11080	BENNER 01
05-123-11308	BORN SITZMAN 01
05-123-11684	LYSTER 04-26EG
05-123-12689	BROWN 01
05-123-12796	STATE SCHMIDT 36-04
05-123-12810	BIGFOOT 02
05-123-12909	CONRAD HERBST 01
05-123-13158	ALOYSIUS 34-04
05-123-13362	VICTOR C 29-14
05-123-13366	STATE SCHMIDT 36-08
05-123-13372	OCOMA G35-05
05-123-13376	STATE SCHMIDT 36-12
05-123-13487	VICTOR C 29-11
05-123-13610	C. WATKINS 18-06
05-123-13693	OCOMA G35-04
05-123-13819	TREBOR 811-10
05-123-14045	MATSUSHIMA PMK 02-01
05-123-14099	YAKLICH PMF12-03
05-123-14426	CHAMPIN 366 AMOCO F01
05-123-14774	ALLES 33-04
05-123-15210	MOSER 10-31
05-123-15292	MOSIER 23-11F
05-123-15293	MOSIER 23-14F
05-123-15575	AGRICULTURAL PRODUCTS INC 32-01F
05-123-15576	AGRICULTURAL PRODUCTS INC 32-02F
05-123-15742	STROH H12-11
05-123-15743	STROH H12-12
05-123-16008	LAND 31-11
05-123-16009	LAND 31-13
05-123-16017	UPRC 31-09G

Appendix 2  
Noble Energy Alternative Mechanical Integrity Assurance Program

05-123-16018	UPRC 31-10G
05-123-16324	OSTER G30-10
05-123-16325	OSTER G30-09
05-123-16533	LDS RED D17-03J
05-123-16625	CAMOLO RED D27-03J
05-123-16657	MENK 8-10
05-123-16757	LAHIMER 13-24
05-123-16758	LEZIN 14-24
05-123-16760	STATE 36-04E
05-123-16761	STATE 36-05E
05-123-16785	HSR-BERTLIN 1-10
05-123-16819	MCCLELLAN 03-32
05-123-16834	HSR-MILLARD 9-29
05-123-16835	HSR-ONEIL 16-29
05-123-16891	KATE WHITE D28-09
05-123-16970	REYNOLDS 28-13
05-123-17169	LOWER LATHAM 02-13G
05-123-17340	DINNEL 26-04
05-123-17346	HETTINGER D30-08
05-123-17368	BERNHARDT 01-12
05-123-17420	HANSON D30-11
05-123-17421	HANSON D30-13
05-123-17422	HANSON D30-14
05-123-17437	LDS RED D17-11
05-123-17438	LDS RED D17-12
05-123-17453	HANSON D30-12
05-123-17543	LDS RED D17-14X
05-123-17589	ARENS 11-15
05-123-17606	HOUSTON 13-34
05-123-17634	HETTINGER D30-07
05-123-17869	UPRC 25-1217
05-123-17878	UPRC 25-1117
05-123-17898	API 20- 614
05-123-17931	MOSER 6-26
05-123-18047	UPV 13-1314
05-123-18213	HAYS FEDERAL 31-08H05
05-123-18227	MCALLISTER 32-12
05-123-18417	HSR-LDS B 5-17
05-123-18418	HSR-LDS B 4-17
05-123-18502	TRAVELERS 21-0814
05-123-18507	HSR-LDS B 3-17
05-123-18508	HSR-LDS B 6-17
05-123-18698	LYSTER E26-15
05-123-18892	LYSTER E26-10X
05-123-20688	CARLSON 15-29
05-123-21606	JOHNSON 19-29
05-123-21689	CARLSON 20-29
05-123-21720	LDS 18-17
05-123-21768	DINNEL C26-19
05-123-21924	BOOTH N25-09
05-123-21925	BOOTH N25-10
05-123-21926	BOOTH N25-15
05-123-21927	BOOTH N25-16
05-123-22604	CADE STATE 036-20
05-123-23167	BOOTH N25-23
05-123-23227	STEPHENS J31-16
05-123-23228	STEPHENS J31-15
05-123-23297	STEPHENS J31-09
05-123-23301	STEPHENS J31-23
05-123-23431	STEPHENS J31-10
05-123-23502	CADE STATE 036-19
05-123-23796	LINDSAY C33-17
05-123-23888	LINDSAY C33-18
05-123-23972	STAIND G35-19
05-123-23990	RURAL 31-15
05-123-24215	OSTER G30-16X
05-123-24833	MCCLELLAN 03-35
05-123-25084	KARAKAKES H13-32

Appendix 2  
Noble Energy Alternative Mechanical Integrity Assurance Program

05-123-25519	USED G02-21
05-123-25575	HERBST C27-20
05-123-25577	HERBST C27-21
05-123-25651	WILSON 18-12
05-123-25672	USED G02-25
05-123-25742	WELLS RANCH USX AA25-16
05-123-25751	WELLS RANCH USX AA25-12
05-123-25821	SCHMIDT G19-22
05-123-26084	FURROW USX AB15-13
05-123-26188	LEONARD C21-16
05-123-26329	STATE SCHMIDT 36-35
05-123-26568	BORN SITZMAN C27-17
05-123-26678	MOSEB 10-35
05-123-26807	WELLS RANCH AA21-14
05-123-26983	WILSON 18-15
05-123-27117	LDS D09-30
05-123-27118	LDS D09-31D
05-123-27183	MORIAH 17-15
05-123-29075	RIVA RED D31-06X
05-123-29081	GUTTERSEN STATE D28-20
05-123-29208	SCHMIDT G19-24
05-123-29250	DPG F12-18
05-123-29410	SCHMIER G19-18
05-123-29419	WELLS RANCH USX AA25-09
05-123-29420	WELLS RANCH USX AA25-13
05-123-29421	WELLS RANCH USX AA25-15
05-123-29474	WIEDEMAN J28-22D
05-123-29510	DILLARD 10-44
05-123-29885	SCHMIDT G30-31
05-123-30151	AURORA USX AB25-16P
05-123-30733	TREBOR 811-22
05-123-30862	ROMERO G03-31D
05-123-31170	ALOYSIUS C34-21D
05-123-31317	SHABLE USX AB11-08P
05-123-31488	DILLARD AB10-11
05-123-31540	FURROW USX AB15-05P
05-123-31624	WELLS RANCH AF07-03
05-123-31917	LYSTER E26-23
05-123-31986	LDS D17-22
05-123-31989	LDS D17-18
05-123-32724	RICHTER USX AB27-13
05-123-33002	DECHANT D30-20D
05-123-33187	WELLS RANCH AE20-16
05-123-33200	ADAMS D30-27D
05-123-34501	DECHANT STATE D31-32
05-123-34502	DECHANT D31-31D
05-123-35368	GUTTERSEN STATE D28-24D
05-123-07203	BOULTER FRANK 1
05-123-07617	SPIKE STATE D28-13J
05-123-09283	CHAMPLIN 525 AM A 1
05-123-09505	PERKINS USX Y07-17 (FKA UPRR 53 PAN AM M 1)
05-123-10192	JEPSEN 1
05-123-10544	KNAUB 04-01
05-123-10554	KRAUSE 28-02
05-123-10633	STATE A14-16X
05-123-10733	SALLEE 01
05-123-10994	MARKUS 01
05-123-11652	ROMERO 34-01
05-123-11710	GEIS 01-05-04-65
05-123-11719	COLE 12-10
05-123-11825	LEONARD 04
05-123-12143	LENGEL 01
05-123-12275	MEYER 02
05-123-12276	HEINLE 03
05-123-12551	UPRR 21 PAN AM J 1
05-123-12731	FRED ARENS 04
05-123-12732	FRED ARENS 05 (AKA 13-5)
05-123-12798	SHELTON RG26-02



Appendix 2  
Noble Energy Alternative Mechanical Integrity Assurance Program

05-123-12809	BIGFOOT 1
05-123-12811	SALLEE 02
05-123-13005	KISSLER 03X
05-123-13217	LIBSACK RG27-10
05-123-13374	OCOMA G35-09
05-123-13375	OCOMA G35-16
05-123-13406	TREBOR B12-07
05-123-13415	TREBOR B11-16
05-123-13441	HAMBERT RG32-01
05-123-13442	HAMBERT RG32-02
05-123-13443	HAMBERT RG32-03
05-123-13502	TREBOR B12-02
05-123-13522	TREBOR B11-15
05-123-13694	OCOMA G35-10
05-123-13766	CPC BOHLENDER 33-04
05-123-13788	LEHAN 2
05-123-14220	ORR AMOCO 11-25
05-123-14417	HARKIS 01-07
05-123-14449	BOHLENDER 33-05
05-123-14465	BOHLENDER 33-07
05-123-14517	LENGEL 16-02
05-123-14523	ALLES FEDERAL 33-22
05-123-14565	MEYER 16-03
05-123-14649	BOUITER 14-04G
05-123-14886	STEWART 07-12G
05-123-14888	HEMPLE 07-13G
05-123-14895	ROOT TRUST 18-09G
05-123-14896	ROOT TRUST 18-16G
05-123-14923	SANDAU & BARTELS 25-12F
05-123-14924	SANDAU & BARTELS 25-13F
05-123-15012	LOUSTALET B15-11
05-123-15133	WEBER K33-09
05-123-15134	WEBER K33-10
05-123-15187	UPRC 13-11J
05-123-15220	UPRC 13-14J
05-123-15310	HSR-MUNDS 13-29
05-123-15328	HSR-ABRAMSON 5-23
05-123-15341	HSR-DICKERSON 14-29A
05-123-15342	SCHWAB 26-14F
05-123-15343	SCHWAB 26-04F
05-123-15377	UPRC 27-09F
05-123-15414	BLAKE B29-15
05-123-15421	UPRC 33-08F
05-123-15422	UPRC 33-07F
05-123-15503	HSR-STEIN 15-23
05-123-15511	HSR LAYNG 4-23
05-123-15521	SANDAU 34-12F
05-123-15625	TREBOR B11-23
05-123-15745	BOHLENDER H14-09
05-123-15746	BOHLENDER H14-15
05-123-15751	DEMEULES 9-22
05-123-15832	LATHAM 02-42
05-123-15967	GOLLNER O27-02
05-123-15972	GOLLNER O27-07
05-123-15973	GOLLNER O27-08
05-123-16178	HSR EPSTEIN 5-24
05-123-16188	DALBEY D25-05
05-123-16237	OLSEN RED Y05-02D
05-123-16344	UPRC 35-05F
05-123-16345	UPRC 35-06F
05-123-16380	MARSHALL 32-14G
05-123-16384	HSR-REGALIA 5-26
05-123-16480	DUNCAN D 20-13
05-123-16534	KYLE WHITE D27-01
05-123-16535	KYLE WHITE D27- 2
05-123-16553	PARKER RED D23-02J
05-123-16658	HSR-ALEXANDER 2-10
05-123-16676	HSR-HART 12-33

Appendix 2  
Noble Energy Alternative Mechanical Integrity Assurance Program

05-123-16677	HSR-LEE 13-33
05-123-16962	PARKER RED D23-04
05-123-17010	CAMOLO RED D27-12
05-123-17011	CAMOLO RED D27-14
05-123-17042	UPRC 13-15J
05-123-17043	UPRC 13-16J
05-123-17268	CHENOWETH 21-02
05-123-17273	DECHANT D07-09
05-123-17283	MICK D18-11
05-123-17367	BERNHARDT 01-11
05-123-17486	WCL 5-8
05-123-17624	TODD 20-08
05-123-17744	STATE 16-16I4
05-123-17759	OSTER 24-15
05-123-17782	UPRC 23-14J
05-123-17788	OGG 21-28
05-123-17826	UPRC 23-09E
05-123-17827	UPRC 23-04I7
05-123-17866	OGG 22-28
05-123-17940	KAMMERZELL 29-06H6
05-123-17943	SCHNEIDER 12-35
05-123-17979	STATE 16-14I4
05-123-18061	PROSPECT CO 26-01I4
05-123-18062	PROSPECT CO 26-07I4
05-123-18063	PROSPECT CO 26-08I04
05-123-18098	HSR-WEEKS 9-17
05-123-18099	HSR-WEEKS 10-17
05-123-18100	HSR-WEEKS 15-17
05-123-18132	MOORE UPRC G 15-7
05-123-18204	HSR-MIKE GUTTERSEN 16-17X
05-123-18300	MOORE UPRC G 15-8
05-123-18310	UPRC 23-07I7
05-123-18311	UPRC 23-10I7
05-123-18312	UPRC 23-11I7
05-123-18410	LDS A 3-8
05-123-18412	LDS A 5-8
05-123-18413	LDS A 9-8
05-123-18415	LDS A 15-8
05-123-18416	LDS A 16-8
05-123-18435	LDS A 6-8
05-123-18437	LDS A 10-8
05-123-18497	UPRC 31-13H06
05-123-18743	HSR-GUTTERSEN 3-33
05-123-18906	SARCHET 6-24
05-123-18925	MOSER 3-26A
05-123-18926	MOSER 04-26
05-123-18972	ADAM RED D26-12
05-123-18973	ADAM RED D26-13
05-123-19099	DECHANT FARMS 9-36
05-123-19119	HSR-GUTTERSEN 13-1
05-123-19120	HSR-GUTTERSEN 6-33
05-123-19127	HSR-GUTTERSEN 12-1
05-123-19128	HSR-GUTTERSEN 11-1
05-123-19132	HSR-GUTTERSEN 14-1
05-123-19133	HSR-GUTTERSEN 15-1
05-123-19134	HSR-GUTTERSEN 16-1
05-123-19158	HSR BOOTH 7-2
05-123-19171	GUTTERSEN STATE 15-28
05-123-20183	BERNHARDT 013-07
05-123-20662	CARLSON 10-29
05-123-21073	CAPITAL 31-19
05-123-21091	OZBUN 10-19
05-123-21167	DECHANT 12-19
05-123-21338	SCHMIDT 16-23
05-123-21548	HARKIS 11-07
05-123-21605	LDS 20-8
05-123-21705	AGRICULTURAL PRODUCTS FEDERAL 32-17F
05-123-21725	LDS 18-8

Appendix 2  
Noble Energy Alternative Mechanical Integrity Assurance Program

05-123-22204	BOOTH 9-25
05-123-22220	SCHNEIDER 4-35
05-123-22417	MOSER H26-14
05-123-22418	MOSER H26-13
05-123-22509	BOULTER 16-21
05-123-22548	SHAFFER 32-13
05-123-22578	SHELTON 17-2
05-123-22829	JEPSEN 14-2
05-123-22853	PERKINS 31-07
05-123-22886	GUTTERSEN 18-21
05-123-22903	HELMS H12-14D
05-123-22910	GUTTERSEN STATE DD08-11
05-123-22911	GUTTERSEN STATE DD08-13
05-123-22912	WEEKS 20-17
05-123-22956	PERKINS 43-05
05-123-22956	HARSH H26- 9D
05-123-22958	DILLER 42-13
05-123-22975	HARSH H26-16
05-123-23084	HARSH H26-15
05-123-23085	GUTTERSEN 44-19
05-123-23114	PERKINS 42-05
05-123-23195	JOHN 3- 26
05-123-23313	STROH 002-07
05-123-23417	PIONEER 22-07
05-123-23863	WASTE MANAGEMENT 41-35
05-123-24005	FARMER 31-25
05-123-24375	MEYER G16-17
05-123-24602	WASTE MANAGEMENT USX Y 03-11
05-123-24796	WASTE MANAGEMENT USX Y 03-12
05-123-24797	WASTE MANAGEMENT USX Y 03-25
05-123-24800	WASTE MANAGEMENT USX Y 03-15
05-123-24801	WASTE MANAGEMENT USX Y 03-23
05-123-24802	MOSER H26-24
05-123-24869	KARAKAKES H13-33
05-123-24974	KARAKAKES H13-25
05-123-25032	SPIKE STATE D28-13
05-123-25095	WASTE MANAGEMENT D26-25
05-123-25391	RYAN STATE C16-23
05-123-25398	RYAN STATE C21-27
05-123-25464	TRE-MAT 23-15
05-123-25539	PATRIOT 816-20
05-123-25729	PATRIOT 816-21
05-123-25731	FRONT RANGE D16-29
05-123-25887	DILLARD USX AB09-16
05-123-26089	SARCHET H24-22
05-123-26160	PAPPENHEIM USX AB13-13
05-123-26250	UPRC K35-19
05-123-26426	FRONT RANGE D16-30
05-123-26788	HAMLIN C21-22
05-123-26877	ABBEY D01-18
05-123-26943	BERNHARDT J31-33D
05-123-26973	BERNHARDT J31-20D
05-123-28163	CECIL USX A01-01
05-123-29085	CECIL USX A01-02
05-123-29087	HANSCOME C21-21
05-123-29150	HOFFMAN C11-29
05-123-29228	ROOT 20-18
05-123-29257	ROOT 24-18
05-123-29371	MOSER 5-26
05-123-29382	WIEDEMAN J28-18D
05-123-29472	NCLP PC AA04-04
05-123-29480	NCLP PC AA04-19
05-123-29481	NCLP PC AA04-05
05-123-29482	NCLP PC AA04-06
05-123-29483	STROH O13-20
05-123-29531	HARSH H26-10
05-123-29677	KLEIN USX B09-14D
05-123-29950	STROH O13-21D
05-123-30040	

Appendix 2  
Noble Energy Alternative Mechanical Integrity Assurance Program

05-123-30041	ARENS GL3-28D
05-123-30280	HERBST C27-30
05-123-30417	WCL 17-5
05-123-30418	WCL 24-5
05-123-30944	WORRIES 34-14
05-123-30951	WORRIES 35-14
05-123-31052	DILLARD USX AB03-05P
05-123-31055	DILLARD USX AB03-07P
05-123-31060	DILLARD USX AB03-08P
05-123-31066	DILLARD USX AB09-15P
05-123-31068	DILLARD USX AB03-06P
05-123-31070	70 RANCH USX 8825-07P
05-123-31138	BOULTER G05-20
05-123-31799	SHABLE USX AB11-11P
05-123-32007	RAY H12-24D
05-123-32263	NCLP PC A404-20
05-123-34878	STEWART FEDERAL G07-32D
05-123-35369	GUTTERSEN STATE D28-21D
05-123-13893	LULU UNIT 06-07
05-123-13894	LULU UNIT 04-07
05-123-35058	BALL RANCH GW27-63HN
05-123-35855	BETHYL GW30-16
05-123-28007	DECHANT D07-20
05-123-26932	DECHANT D07-22
05-123-09987	REICHERT 09-02J
05-123-10472	REEVE 41-15 1
05-123-11823	LEONARD 02
05-123-11926	NIX 01
05-123-12271	THOMPSON 04
05-123-12458	JOHNSON 29-1
05-123-12515	BIG FOOT 1-12
05-123-13035	BOHLENDER 29-02
05-123-13111	MARIE D04-04
05-123-13153	LINDSAY C33- 1
05-123-13157	LINDSAY C33-04
05-123-13161	LINDSAY C33-08
05-123-13164	MARIE D04-10
05-123-13165	LINDSAY C33-05
05-123-13166	LINDSAY C33-06
05-123-13170	MARIE D04-06
05-123-14151	OSTER PMG28-01
05-123-14613	UPRR 53 PAN AM V 1
05-123-14700	LINDSAY C33-14
05-123-14712	LINDSAY C33-13
05-123-14713	LINDSAY C33-15
05-123-14722	LINDSAY C33-09
05-123-14723	LINDSAY C33-16
05-123-14909	MCMLLEN TRUST 19-11G
05-123-14910	MCMLLEN TRUST 19-12G
05-123-14911	MCMLLEN TRUST 19-13G
05-123-14912	MCMLLEN TRUST 19-14G
05-123-15121	MARIE D04-05
05-123-15122	MARIE D04-03
05-123-15165	HSR-BREST 4-31
05-123-15166	HSR-GARDNER 3-31A
05-123-15426	UPRR 21 PAN AM N 1
05-123-15466	DUNCAN D20-12
05-123-15510	MELCHIOR 13-17
05-123-15767	KNAUB 09-13G
05-123-16246	HSR-GULICK 15-11
05-123-16255	KARCH BLUE DD18-03J
05-123-16282	KARCH WHITE D09-01
05-123-16298	HSR-KEMPER 10-34
05-123-16367	GITTLIN WHITE D09-02
05-123-16550	LEWIS 1-26
05-123-16557	LAMBERT 10-26
05-123-16637	HARLUCK 9-26
05-123-16768	GETZ 14-17

Appendix 2  
Noble Energy Alternative Mechanical Integrity Assurance Program

05-123-16932	HSR-CALIENTE 16-11
05-123-17147	MILDENBERGER-MOORE H 13-1
05-123-17284	MICK D18-12
05-123-17285	MICK D18-13
05-123-17315	WILCOX H14-10
05-123-17334	MICK D18-14
05-123-17460	MOORE UPRC H 13-2
05-123-17478	WILCOX H14-11
05-123-17479	WILCOX H14-13
05-123-17480	WILCOX H14-03i
05-123-17787	OSTER 21-27
05-123-17937	KAMMERZELL 29-03H6
05-123-17964	KNAUB 22-27
05-123-18000	HSR-TIM GITTLEIN 3-9
05-123-18001	HSR-TIM GITTLEIN 4-9
05-123-18002	HSR-TIM GITTLEIN 5-9
05-123-18003	HSR-TIM GITTLEIN 6-9
05-123-18094	HSR-GUTTERSEN A 9-3
05-123-18097	HSR-GUTTERSEN A 16-3
05-123-18120	FRICO 01-22
05-123-18121	FRICO 2-22
05-123-18122	FRICO 07-22
05-123-18123	FRICO 8-22
05-123-18913	HSR-GUN CLUB 16-34
05-123-18991	BIG FOOT 14-12
05-123-19016	GITTLEIN D09-07
05-123-19852	SCOTTDAL 26-14
05-123-20340	MARTINEZ 27-32
05-123-20413	MARTINEZ 27-34
05-123-20444	JOHNSON 29-13
05-123-21064	MAROLF 14-11
05-123-21090	GUTTERSEN STATE 8-16
05-123-21321	LORENZ 15-15
05-123-21346	DUMLER 9-27
05-123-21609	LINDSAY C38-23
05-123-21758	GITTLEIN 18-9
05-123-22183	ABBEY D01-05
05-123-22184	ABBEY D01-06
05-123-22185	ABBEY D01-04
05-123-22239	BEEBE 10-34
05-123-22512	MARIE D04-19
05-123-22540	SCHMIDT 1-26
05-123-22852	WASTE MANAGEMENT 44-03
05-123-23011	LINDSAY C38-25
05-123-23126	STATE BOOTH 36-11
05-123-23226	BERNHARDT J31-19
05-123-23303	MAROLF 34-11
05-123-23458	DUMLER 20-27
05-123-23467	RURAL 18-31
05-123-23723	LIAM D34-13
05-123-23724	LIAM D34-14
05-123-23725	LIAM D34-11
05-123-23726	LIAM D34-12
05-123-23728	LIAM D34-25
05-123-23749	MICK D18-25
05-123-23832	ULRICH 35-17
05-123-23873	HETTINGER 24-13
05-123-23905	RURAL 29-31
05-123-24079	FRICO 36-11
05-123-24080	FRICO 37-11
05-123-24092	FRICO 35-11
05-123-24116	STATE THORNTON 16-11
05-123-24798	WASTE MANAGEMENT USX Y 03-13
05-123-24799	WASTE MANAGEMENT USX Y03-14
05-123-25243	FRICO 17-22
05-123-25244	ROADHOUSE D09-17
05-123-25293	HAMBERT G32-04X
05-123-25352	ULRICH 23-26

Appendix 2  
Noble Energy Alternative Mechanical Integrity Assurance Program

05-123-25673	FRICO 24-22
05-123-25866	FRAZIER 33-15
05-123-25952	LINDSAY C33-20
05-123-25953	LINDSAY C33-24
05-123-25969	LINDSAY C33-22
05-123-25975	LINDSAY C33-21
05-123-26097	RITCHIE 31-24
05-123-26537	KAMMERZELL J29-19
05-123-26656	HAMILTON F25-21
05-123-26674	JOHNSON 29-15
05-123-26684	WIRICH 39-26
05-123-27102	GUTTERSEN D04-21
05-123-27103	GUTTERSEN D04-18
05-123-28167	OWENS K21-30D
05-123-29059	GUTTERSEN D15-17
05-123-29131	GUTTERSEN D02-20
05-123-29144	HANSCOME C21-20
05-123-29681	EMBREE C10-18
05-123-29788	CECIL USX A01-05D
05-123-29945	OSTER G30-23
05-123-29946	OSTER G30-24
05-123-30080	ABBIE D01-29
05-123-30081	ABBIE D01-28
05-123-30201	GUTTERSEN D04-32
05-123-30497	GUTTERSEN D15-29
05-123-31051	SHABE USX AB11-16P
05-123-31779	ABBIE D01-32D
05-123-32800	BURGHART D04-22
05-123-32818	BERNHARDT PC J31-30D
05-123-32820	EASTON G12-20D
05-123-33201	GARCIA USX AB35-10D
05-123-33933	LIAM D34-33
05-123-34242	GUTTERSEN D01-31D
05-123-07686	STATE 27
05-123-13216	BEEBE DRAW RG26-09
05-123-15294	BOCKIUS 34-01G
05-123-15481	BRUZEWSKI 33-16F
05-123-16148	SCHMIDT 30-04G
05-123-16226	SCHMIDT 30-03G
05-123-16892	KATE WHITE D29-15
05-123-16893	KATE WHITE D29-16
05-123-17013	KATE RED D29-11
05-123-17016	KATE RED D29-13
05-123-17017	KATE RED D29-14
05-123-17274	DECHANT D07-10
05-123-17278	DECHANT D07-16
05-123-18298	JESSIE D29-04I
05-123-18426	DECHANT D07-15
05-123-18492	UPRC 31-03H6
05-123-18789	UPV 01-02J4
05-123-21434	ALOYSIUS C34-19
05-123-21878	ABBIE D01-08J1
05-123-22196	ABBIE D01-07J1
05-123-22949	DECHANT D07-23
05-123-26155	WALCKER USX AB01-13
05-123-26554	MOSSBERG J30-23
05-123-27006	WELLS RANCH USX AA11-12
05-123-29943	SCHMIDT G30-19
05-123-30704	GUTTERSEN D15-30
05-123-31057	DILLARD USX AB05-15P
05-123-31165	ALOYSIUS C34-24
05-123-31303	WALCKER USX AB01-15P
05-123-32709	GUTTERSEN D29-99H2
05-123-32815	BERNHARDT PC J31-32D
05-123-32816	BERNHARDT PC J31-31D
05-123-33223	GUTTERSEN STATE D28-79HN
05-123-33242	GUTTERSEN D29-33D
05-123-33277	GUTTERSEN D29-65HN

Appendix 2  
Noble Energy Alternative Mechanical Integrity Assurance Program

05-123-34500	GUTTERSEN D29-31D
05-123-13275	LULL UNIT 06-09
05-123-13427	LULL UNIT 04-09
05-123-22211	FEDERAL PAINT 09-26
05-123-36782	BETHYL GW29-12
05-123-26911	DECHANT 007-32
05-123-10996	J ALLES 01
05-123-11981	STATE 08-36
05-123-12019	CANTRELL 01
05-123-13109	ALOYSIUS 34-01
05-123-13123	ALOYSIUS 34-03
05-123-14752	ALOYSIUS C34-08
05-123-17355	ALLES 33-03
05-123-17361	CANTRELL 22-12
05-123-22419	MOSER H26-12
05-123-24381	CALATO G11-23
05-123-26956	DEGENHART USX AE17-06
05-123-27151	DEGENHART USX AE17-04
05-123-28086	CHUCK ARENS G12-33
05-123-29473	WIEDEMAN J28-21D
05-123-30150	AURORA USX AB25-10P
05-123-30267	MCKAY AB02-13
05-123-30633	SHABLE USX AB11-04P
05-123-31069	DILLARD AB10-07
05-123-31473	DILLARD AB10-02
05-123-14596	FEDERAL J09-23
05-123-20778	FEDERAL PALOMINO 11-13
05-123-32866	STATE 08-61 36-01H
05-123-34890	BALL RANCH AC15-04
05-123-17399	NORRIS D32-09
05-123-17400	NORRIS D32-10
05-123-17401	NORRIS D32-15
05-123-29416	WELLS RANCH USX AA25-03
05-123-20200	MAURY 013-03
05-123-25171	DILLARD 04-24
05-123-26373	WELLS RANCH USX AA33-25
05-123-25164	STATE DILLARD 16-21
05-123-35868	BETHYL GW29-13
05-123-31495	MCKAY FEDERAL AB02-14