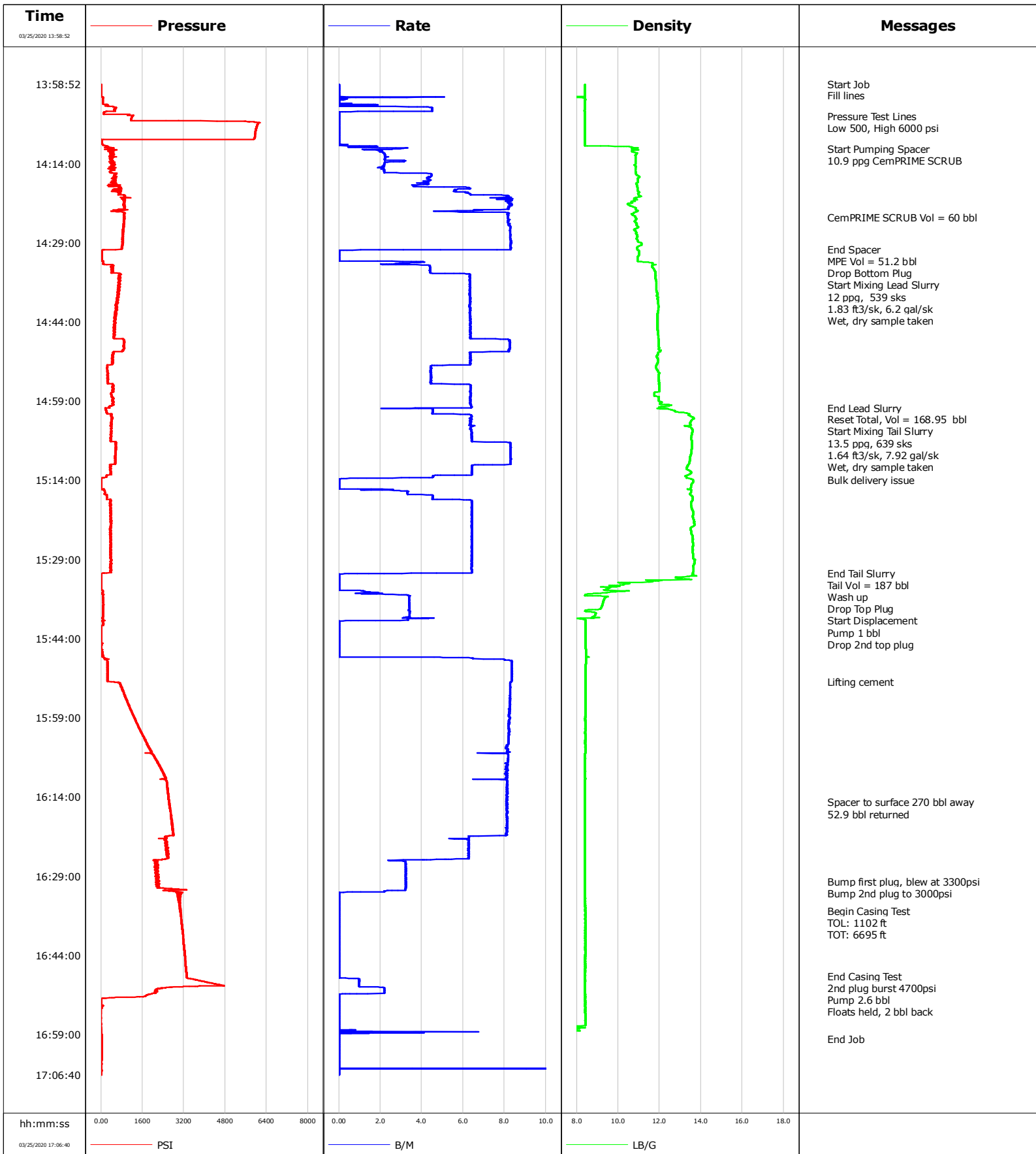


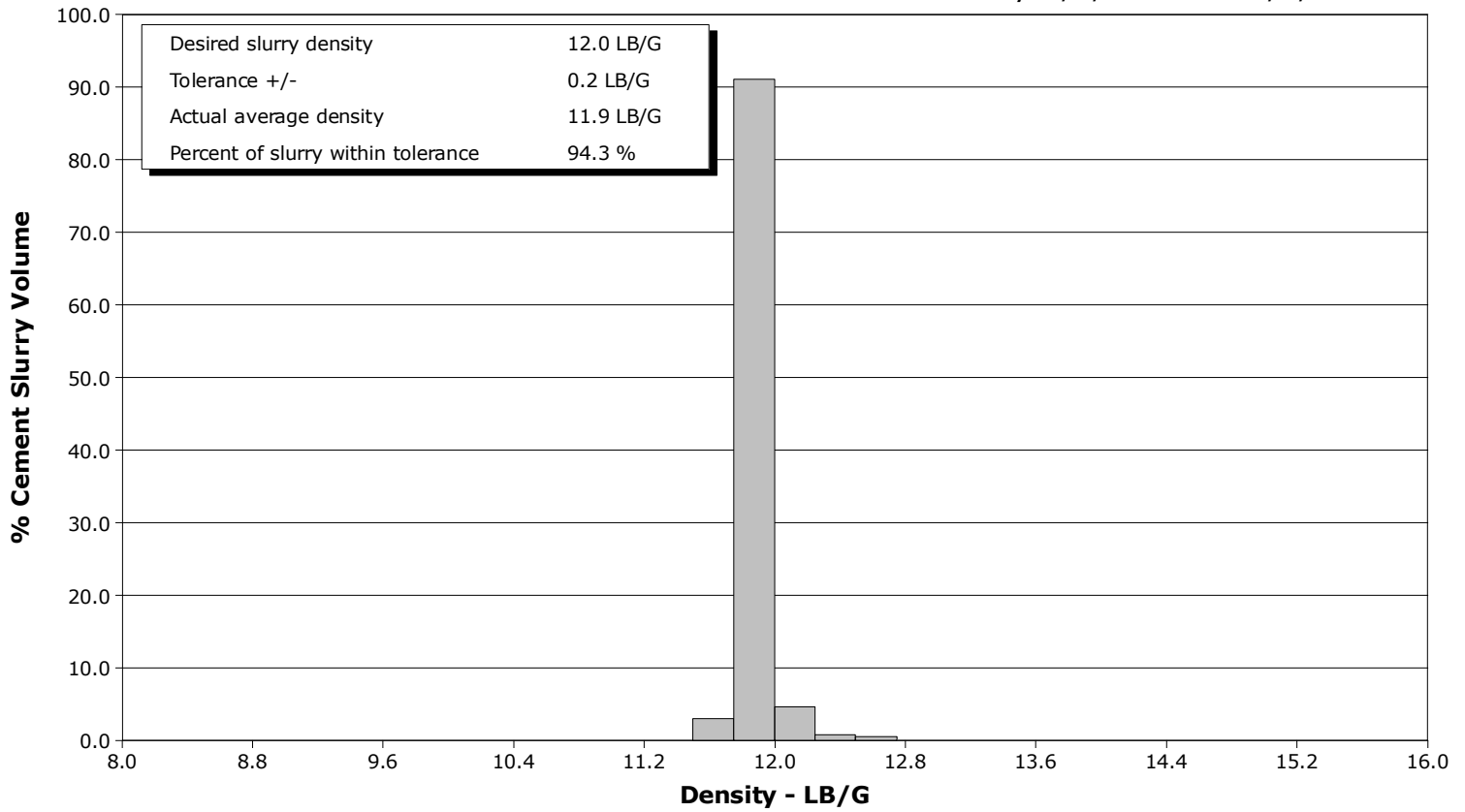
<b>Well</b>	Mae J 8-9HZ	<b>Client</b>	Anadarko
<b>Field</b>	DJ	<b>SIR No.</b>	EAJ7-01268
<b>Engineer</b>	Michael Navoy / Andrew Black	<b>Job Type</b>	Production
<b>Country</b>	United States	<b>Job Date</b>	03-25-2020



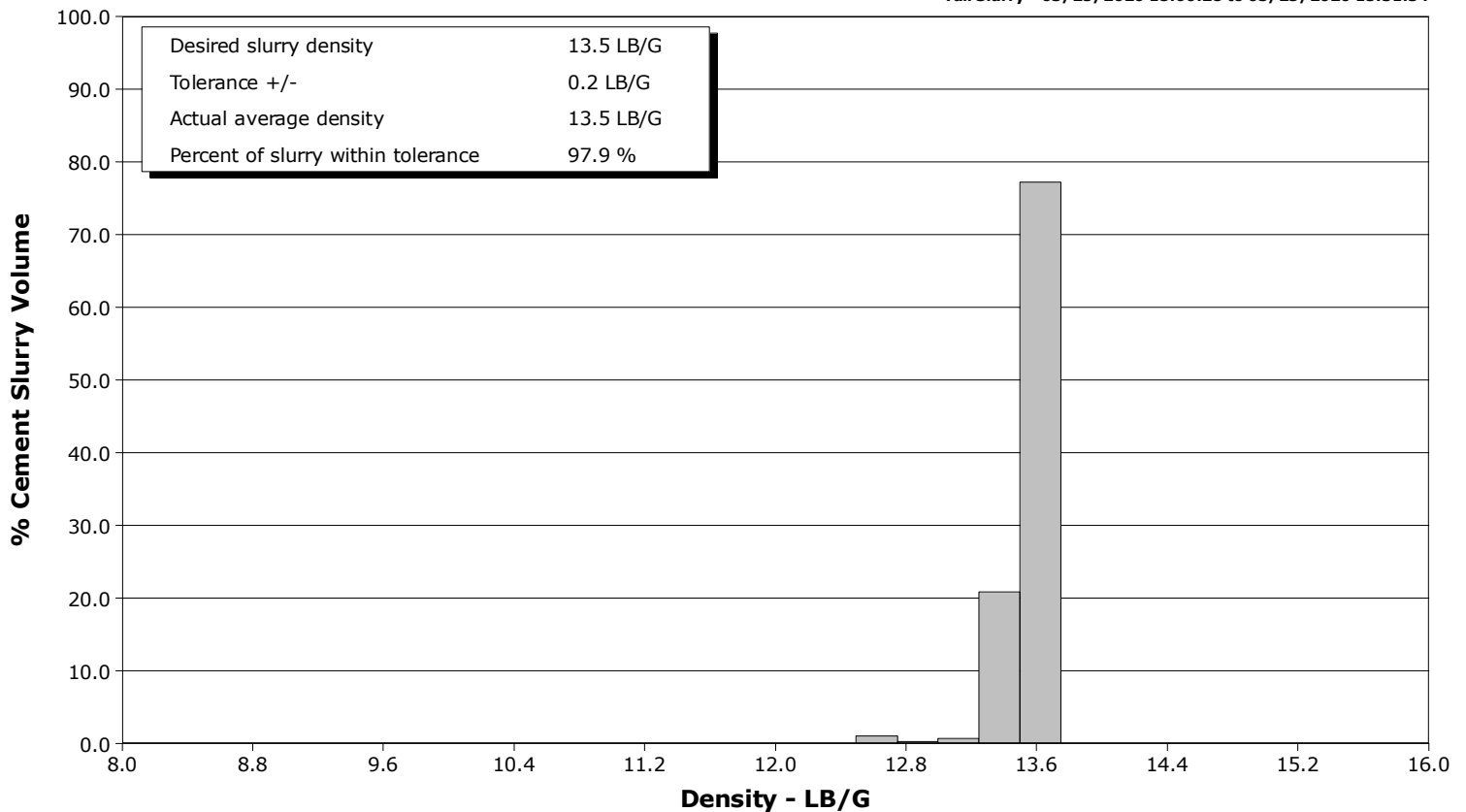
**Well** Mae J 8-9HZ  
**Field** DJ  
**Engineer** Michael Navoy / Andrew Black  
**Country** United States

**Client** Anadarko  
**SIR No.** EAJ7-01268  
**Job Type** Production  
**Job Date** 03-25-2020

**Lead Slurry - 03/25/2020 14:33:35 to 03/25/2020 15:00:11**



**Tail Slurry - 03/25/2020 15:00:28 to 03/25/2020 15:31:34**



				Customer			Job Number			
				Anadarko			EAJ7-01268			
Well		Location (legal)			Schlumberger Location			Job Start		
Mae J 8-9HZ		P461			Cheyenne			Mar/25/2020		
Field		Formation Name/Type		Deviation	Bit Size	Well MD		Well TVD		
DJ				90 deg	7.9 in	13951.4 ft		7717.0 ft		
County		State/Province			BHP	BHST	BHCT	Pore Press. Gradient		
Weld		Colorado			psi	230 degF	230 degF	lb/gal		
Well Master		API/UWI								
0065961419										
Rig Name	Drilled For		Service Via		Casing/Liner					
P461	Oil		Land		Depth, ft	Size, in	Weight, lb/ft	Grade	Thread	
					1931.0	9.6	36.0	J55	N/A	
Offshore Zone	Well Class		Well Type		13951.4	5.5	17.0	P110	8RD	
	Old		Development							
Drilling Fluid Type		Max. Density	Plastic Viscosity		Tubing/Drill Pipe					
		lb/gal	cP		T/D	Depth, ft	Size, in	Weight, lb/ft	Grade	Thread
Service Line	Job Type				Perforations/Open Hole					
Cementing	Production				Top, ft	Bottom, ft	shot/ft	No. of Shots	Total Interval	
					ft	ft			ft	
Max. Allowed Tub. Press	Max. Allowed Ann. Press		WH Connection		ft	ft			Diameter	
psi	psi				ft	ft			in	
Service Instructions					Treat Down	Displacement	Packer Type	Packer Depth		
5.5 inch Production Low P Test 500, High 6000. CemPRIME SCRUB Vol = 60bbl. MPE Vol = 50bbl. Lead: 12ppg, 539 sks, 1.83 ft3/sk, 6.2 gal/sk, Vol = 169 bbl. Tail: 13.5ppg, 639 sks, 164 ft3/sk, 7.9 gal/sk, Vol = 187 bbl. Disp 322.9 bbl 52.9 bbl Spacer to surface TOL: 1102ft TOT: 6695 ft 2nd plug burst at 4700 psi. Floats held, 2 bbl back					Casing	322.9 bbl		ft		
					Tubing Vol.	Casing Vol.	Annular Vol.	Openhole Vol.		
					bbl	323.7 bbl	464.1 bbl	0.0 bbl		
Casing/Tubing Secured		1 Hole Vol. Circulated prior to Cement			Casing Tools			Squeeze Job		
<input type="checkbox"/>		<input type="checkbox"/>								
Lift Pressure				Shoe Type		Shoe Depth		Squeeze Type		
psi				Float		13951.4 ft				
Pipe Rotated		Pipe Reciprocated			Stage Tool Type		Tool Depth			
<input type="checkbox"/>		<input type="checkbox"/>					ft			
No. Centralizers		Top Plugs	Bottom Plugs	Stage Tool Depth			Tail Pipe Size			
		2	1	ft			in			
Cement Head Type				Collar Type		Collar Depth		Tail Pipe Depth		
				Float		13917.3 ft		ft		
Job Scheduled For		Arrived on Location		Leave Location		Sqz. Total Vol.				
Mar/25/2020 12:00		Mar/25/2020 10:00		Mar/25/2020 19:00		bbl				
Date	Time 24-hr clock	Treating Pressure PSI	Flow Rate B/M	Density LB/G	Volume BBL	Message				
03/25/2020	13:58:52	4	0.0	8.40	0.0	Started Acquisition				
03/25/2020	13:58:54	3	0.0	8.40	0.0	Start Job				
03/25/2020	14:01:00	4	0.0	8.40	0.0	Fill lines				
03/25/2020	14:05:00	1199	0.0	8.40	5.3	Pressure Test Lines				
03/25/2020	14:06:00	5937	0.0	8.40	5.3	Low 500, High 6000 psi				
03/25/2020	14:11:10	320	2.0	10.66	6.6	Start Pumping Spacer				
03/25/2020	14:11:19	453	2.0	10.90	6.9	10.9 ppg CemPRIME SCRUB				
03/25/2020	14:24:10	893	8.2	10.85	71.5	CemPRIME SCRUB Vol = 60 bbl				
03/25/2020	14:30:15	64	0.7	10.93	121.4	End Spacer				
03/25/2020	14:30:24	21	0.0	11.00	121.4	MPE Vol = 51.2 bbl				
03/25/2020	14:30:33	21	0.0	11.00	121.4	Drop Bottom Plug				
03/25/2020	14:33:35	458	4.4	11.66	125.9	Start Mixing Lead Slurry				
03/25/2020	14:33:44	424	4.4	11.69	126.6	12 ppg, 539 sks				
03/25/2020	14:33:45	414	4.4	11.70	126.6	Wet, dry sample taken				
03/25/2020	15:00:11	307	6.4	12.00	290.3	End Lead Slurry				
03/25/2020	15:00:12	191	5.9	12.04	290.4	Reset Total, Vol = 168.95 bbl				
03/25/2020	15:00:28	181	4.5	12.49	291.5	Start Mixing Tail Slurry				
03/25/2020	15:00:32	177	4.5	12.55	291.8	13.5 ppg, 639 sks				
03/25/2020	15:00:33	195	4.5	12.56	291.9	1.64 ft3/sk, 7.92 gal/sk				
03/25/2020	15:14:00	15	0.0	13.62	380.3	Bulk delivery issue				
03/25/2020	15:31:34	12	1.5	13.58	477.3	End Tail Slurry				

Well		Field		Job Start		Customer		Job Number	
Mae J 8-9HZ		DJ		Mar/25/2020		Anadarko		EAJ7-01268	
Date	Time 24-hr clock	Treating Pressure PSI	Flow Rate B/M	Density LB/G	Volume BBL	Message			
03/25/2020	15:32:00	8	0.0	13.78	477.4	Wash up			
03/25/2020	15:37:00	84	3.4	9.27	483.4	Drop Top Plug			
03/25/2020	15:37:01	93	3.4	9.27	483.5	Start Displacement			
03/25/2020	15:38:00	94	3.4	9.19	486.8	Pump 1 bbl			
03/25/2020	15:40:00	22	4.6	8.69	493.6	Drop 2nd top plug			
03/25/2020	15:52:14	671	8.3	8.41	534.5	Lifting cement			
03/25/2020	16:15:00	2636	8.1	8.40	720.6	Spacer to surface 270 bbl away			
03/25/2020	16:16:00	2672	8.1	8.40	728.7	52.9 bbl returned			
03/25/2020	16:30:00	2215	3.2	8.40	813.3	Bump first plug, blew at 3300psi			
03/25/2020	16:31:00	2256	3.2	8.40	816.5	Bump 2nd plug to 3000psi			
03/25/2020	16:35:34	3068	0.0	8.41	819.3	Begin Casing Test			
03/25/2020	16:36:25	3077	0.0	8.41	819.3	TOL: 1102 ft			
03/25/2020	16:48:00	3307	0.0	8.41	819.3	End Casing Test			
03/25/2020	16:49:00	4036	1.0	8.41	820.0	2nd plug burst 4700psi			
03/25/2020	16:50:00	2638	2.1	8.40	821.0	Pump 2.6 bbl			
03/25/2020	16:51:00	2070	2.2	8.40	823.2	Floats held, 2 bbl back			

### Post Job Summary

Average Pump Rates, bbl/min				Volume of Fluid Injected, bbl			
Slurry	N2	Mud	Maximum Rate	Total Slurry	Mud	Spacer	N2
6.2			25.0	356.0	0.0	111.2	
Treating Pressure Summary, psi				Breakdown Fluid			
Maximum	Final	Average	Bump Plug to	Breakdown	Type	Volume	Density
6133	17	1144	3000			bbl	lb/gal
Avg. N2 Percent	Designed Slurry Volume		Displacement	Mix Water Temp	Cement Circulated to Surface?	Volume	
%	0.0 bbl		322.9 bbl	degF	<input type="checkbox"/>	bbl	
					Washed Thru Perfs	To	
					<input type="checkbox"/>	ft	
Customer or Authorized Representative			Schlumberger Supervisor		Circulation Lost	Job Completed	
Company Man			Michael Navoy / Andrew Black		<input type="checkbox"/>	<input type="checkbox"/>	
					-	-	