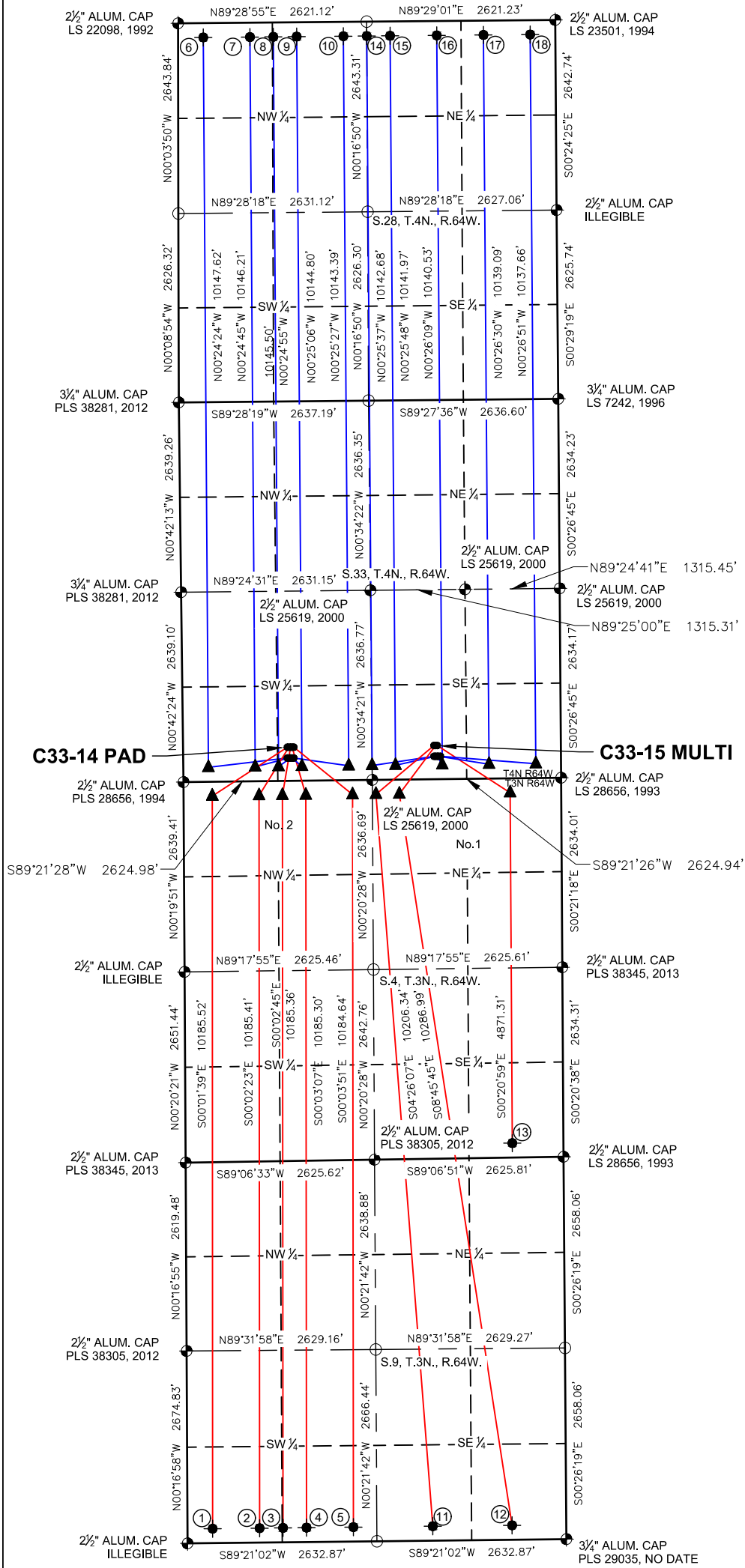
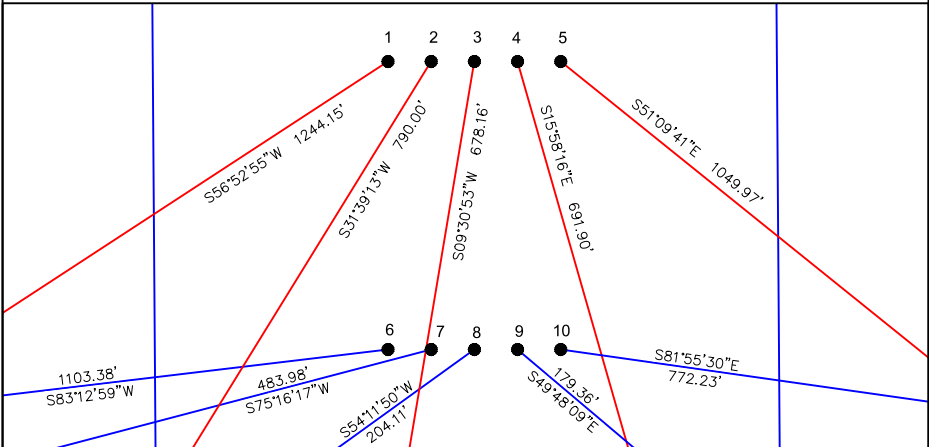


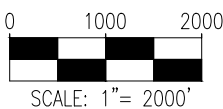
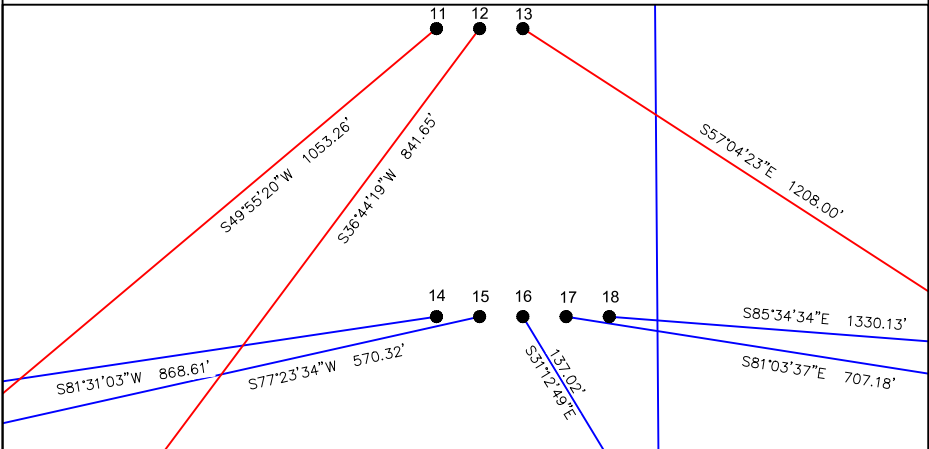
C33-14 PAD & C33-15 MULTI
MULTI-WELL LOCATION PLAT / MULTI-WELL PLAN
T4N R64W SECTION 33



PROPOSED WELLBORE DIRECTION DATA
C33-14 PAD
SLOTS 1-10



PROPOSED WELLBORE DIRECTION DATA
C33-15 MULTI
SLOTS 11-18



LEGEND

- FOUND MONUMENT
- CALCULATED POSITION
- PROPOSED WELL
- BOTTOM HOLE
- TOP OF PRODUCTIVE ZONE

- Notes:
- All bearings are Grid Bearings of the Colorado State Plane Coordinate System, North Zone, North American Datum 1983/2011. The lineal dimensions as shown herein are grid distances based upon the "U.S. Survey Foot." To get ground distances multiply shown distance by 1.0002648.
 - Distances are measured at 90° from section line of the Sixth Principal Meridian, County of Weld, State of Colorado.
 - Ground elevations are based on an observed GPS elevation (NAVD 1988 DATUM).
 - Surface use: "RANGELAND"
 - Instrument Operator: Robert Rowe
 - This map does not represent a boundary survey.

DISCLAIMER:
THIS PLOT DOES NOT REPRESENT A MONUMENTED LAND SURVEY AND SHOULD NOT BE RELIED UPON TO DETERMINE BOUNDARY LINES, PROPERTY OWNERSHIP OR OTHER PROPERTY INTERESTS. PARCEL LINES, IF DEPICTED HAVE NOT BEEN FIELD VERIFIED AND MAY BE BASED UPON PUBLICLY AVAILABLE DATA THAT ALSO HAS NOT BEEN INDEPENDENTLY VERIFIED.

SURFACE HOLE LOCATION									TOP OF PRODUCTIVE ZONE		BOTTOM HOLE LOCATION	
SLOT	WELL NAME	PDOP	LATITUDE	LONGITUDE	FOOTAGE		QTR-QTR	ELEV.	FOOTAGE		FOOTAGE	
1	GUTTERSEN D09-785	1.5	40.26303°N	104.56017°W	468' FSL	1449' FWL	SESW	4725'	200' FNL	400' FWL	200' FSL	350' FWL
2	GUTTERSEN D09-775	1.5	40.26303°N	104.56009°W	468' FSL	1472' FWL	SESW	4725'	200' FNL	1050' FWL	200' FSL	1002' FWL
3	GUTTERSEN D09-770	1.5	40.26302°N	104.56001°W	468' FSL	1494' FWL	SESW	4725'	200' FNL	1375' FWL	200' FSL	1328' FWL
4	GUTTERSEN D09-765	1.4	40.26302°N	104.55993°W	467' FSL	1517' FWL	SESW	4725'	200' FNL	1700' FWL	200' FSL	1654' FWL
5	GUTTERSEN D09-755	1.4	40.26302°N	104.55985°W	467' FSL	1539' FWL	SESW	4724'	200' FNL	2350' FWL	200' FSL	2306' FWL
6	GUTTERSEN C28-785	1.5	40.26261°N	104.56018°W	318' FSL	1447' FWL	SESW	4724'	200' FSL	350' FWL	200' FNL	350' FWL
7	GUTTERSEN C28-775	1.5	40.26261°N	104.56010°W	318' FSL	1470' FWL	SESW	4724'	200' FSL	1000' FWL	200' FNL	999' FWL
8	GUTTERSEN C28-770	1.5	40.26261°N	104.56002°W	318' FSL	1492' FWL	SESW	4723'	200' FSL	1325' FWL	200' FNL	1324' FWL
9	GUTTERSEN C28-765	1.4	40.26261°N	104.55994°W	317' FSL	1515' FWL	SESW	4723'	200' FSL	1650' FWL	200' FNL	1648' FWL
10	GUTTERSEN C28-755	1.4	40.26261°N	104.55985°W	317' FSL	1537' FWL	SESW	4723'	200' FSL	2300' FWL	200' FNL	2297' FWL
11	GUTTERSEN D09-750	1.5	40.26303°N	104.55287°W	468' FSL	1764' FEL	SWSE	4720'	200' FNL	2575' FEL	200' FSL	1856' FEL
12	GUTTERSEN D09-745	1.5	40.26303°N	104.55279°W	468' FSL	1742' FEL	SWSE	4720'	200' FNL	2250' FEL	200' FSL	753' FEL
13	GUTTERSEN D09-721	1.4	40.26303°N	104.55270°W	468' FSL	1719' FEL	SWSE	4722'	200' FNL	710' FEL	200' FSL	710' FEL
14	GUTTERSEN C28-750	1.4	40.26262°N	104.55287°W	318' FSL	1765' FEL	SWSE	4714'	200' FSL	2625' FWL	200' FNL	2622' FWL
15	GUTTERSEN C28-745	1.4	40.26262°N	104.55279°W	318' FSL	1743' FEL	SWSE	4714'	200' FSL	2300' FEL	200' FNL	2297' FEL
16	GUTTERSEN C28-735	1.4	40.26262°N	104.55271°W	318' FSL	1720' FEL	SWSE	4715'	200' FSL	1650' FEL	200' FNL	1648' FEL
17	GUTTERSEN C28-725	1.4	40.26262°N	104.55263°W	318' FSL	1698' FEL	SWSE	4716'	200' FSL	1000' FEL	200' FNL	999' FEL
18	GUTTERSEN C28-715	1.4	40.26262°N	104.55255°W	317' FSL	1675' FEL	SWSE	4718'	200' FSL	350' FEL	200' FNL	350' FEL



8620 Wolff Court
Westminster, CO 80031
(303) 928-7128
www.ascentgeomatics.com

FIELD DATE:
09-20-18

DRAWN BY:
JW

DRAWING DATE:
04-23-20

CHECKED BY:
IJM

SURFACE LOCATION:
SEC. 33, T4N, R64W, 6TH P.M.
WELD COUNTY, COLORADO

PUBLICLY AVAILABLE DATA SOURCES HAVE NOT BEEN INDEPENDENTLY VERIFIED BY ASCENT.

