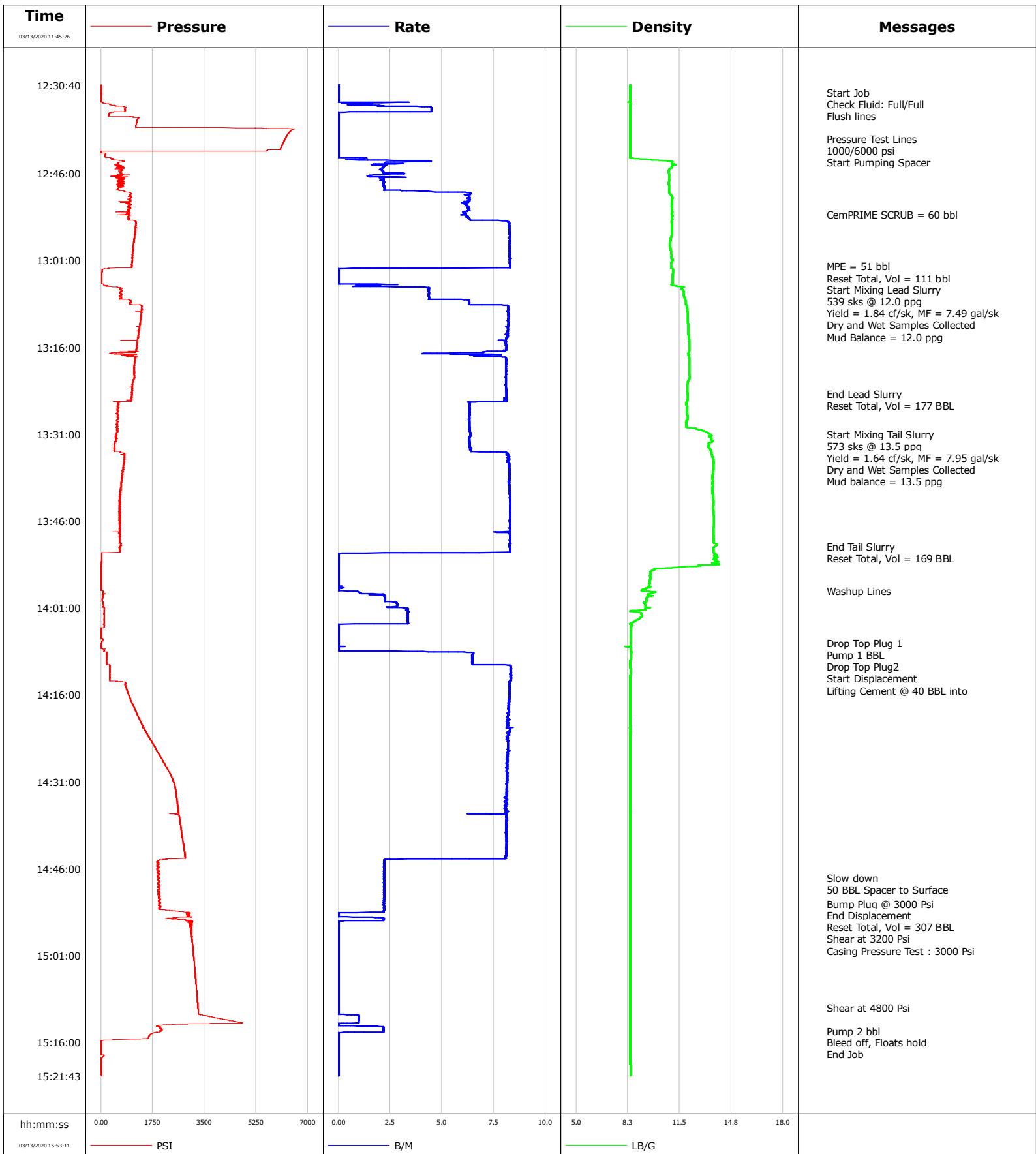


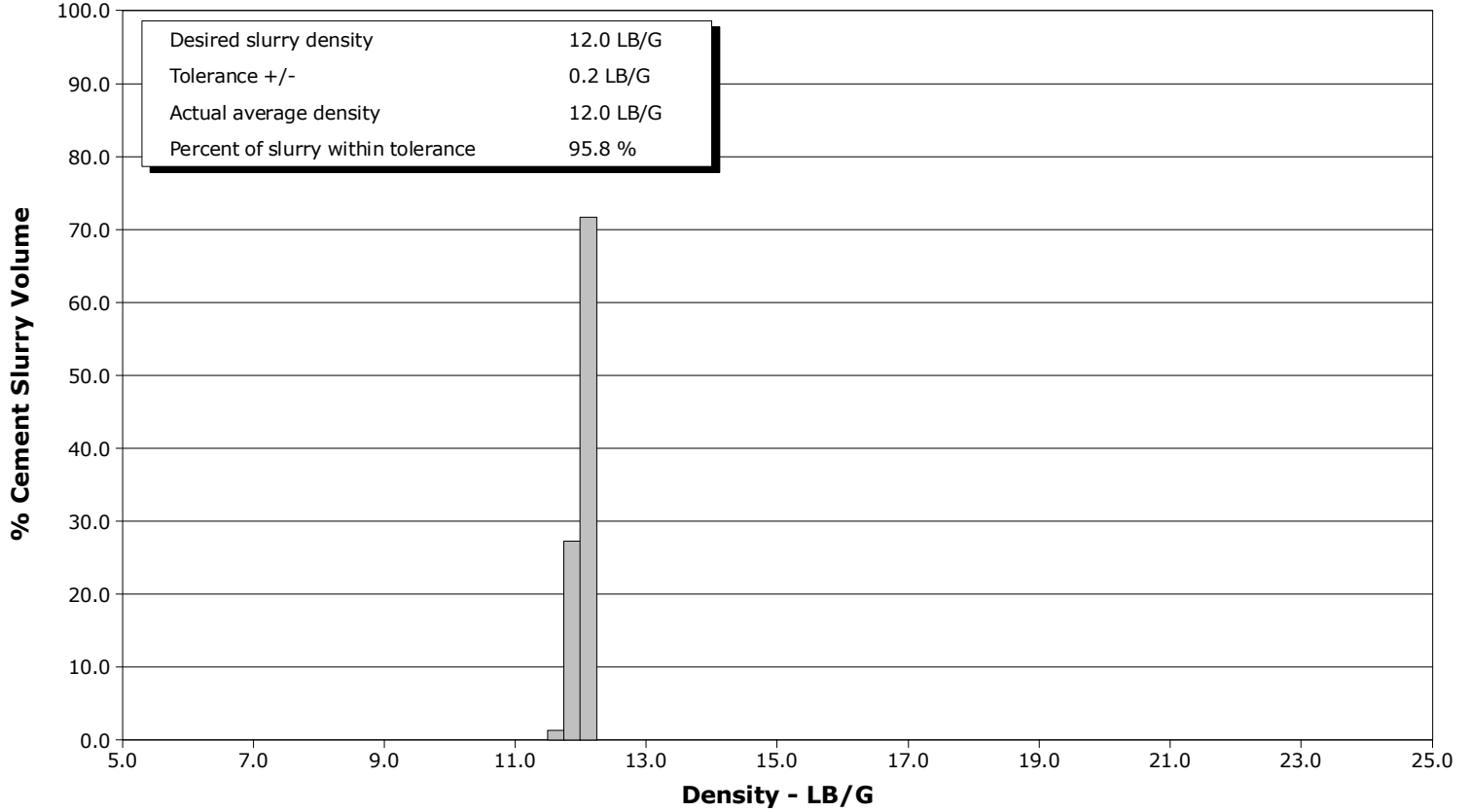
Well	MAE J 8-6HZ	Client	ANADARKO
Field	DJ	SIR No.	EAJ7-01262
Engineer	Bharatsai Alla	Job Type	5.5" Production
Country	United States	Job Date	03-13-2020



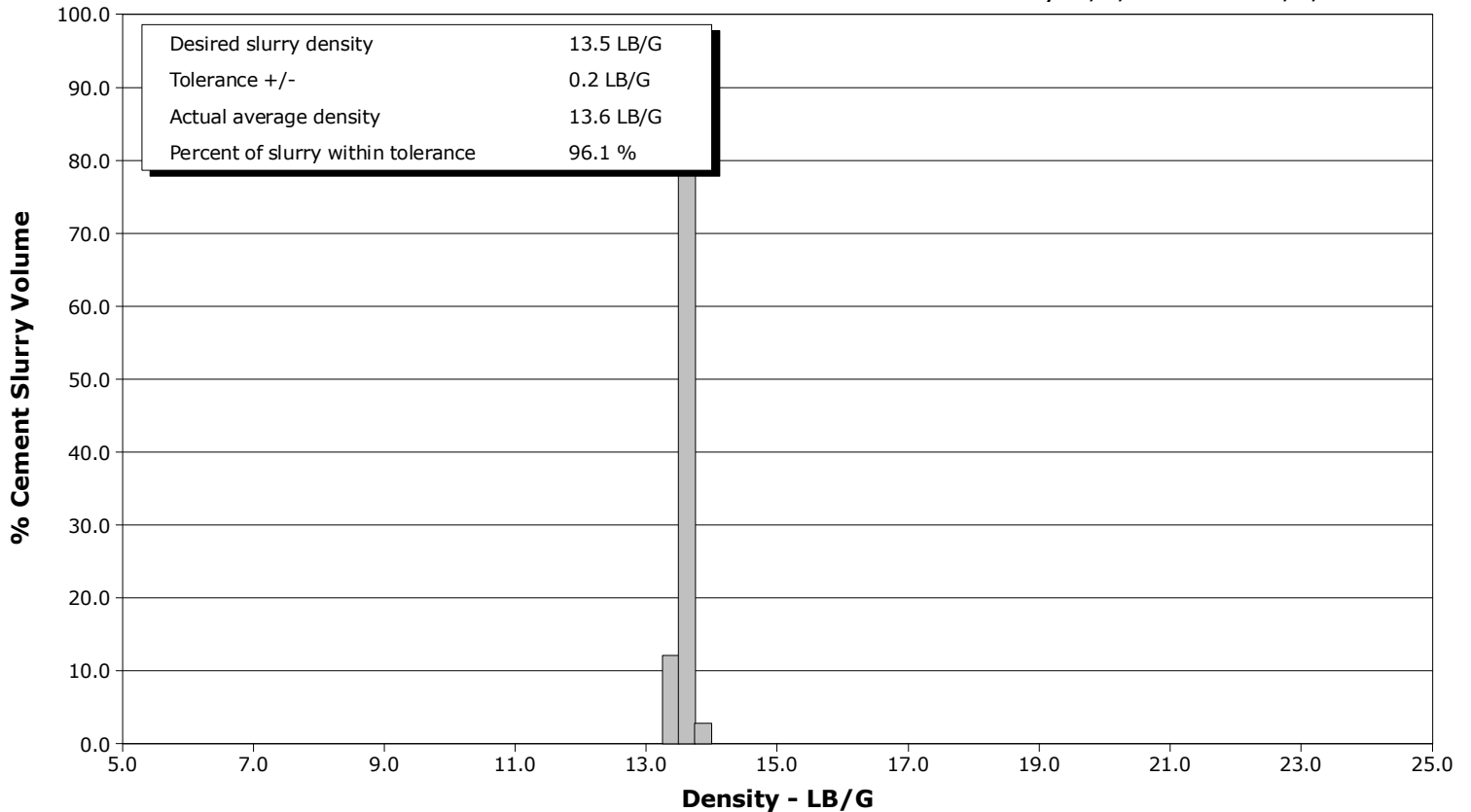
Well MAE J 8-6HZ
Field DJ
Engineer Bharatsai Alla
Country United States

Client ANADARKO
SIR No. EAJ7-01262
Job Type 5.5" Production
Job Date 03-13-2020

Lead Slurry - 03/13/2020 13:06:00 to 03/13/2020 13:24:00



Tail Slurry - 03/13/2020 13:30:59 to 03/13/2020 13:50:25



				Customer			Job Number			
				ANADARKO			EAJ7-01262			
Well		Location (legal)			Schlumberger Location			Job Start		
MAE J 8-6HZ		Weld						Mar/13/2020		
Field		Formation Name/Type			Deviation	Bit Size		Well MD	Well TVD	
DJ					deg	7.9 in		13208.0 ft	ft	
County		State/Province			BHP	BHST	BHCT	Pore Press. Gradient		
Weld		Colorado			psi	degF	degF	lb/gal		
Well Master		API/UWI								
5.5" Production		05123505150000								
Rig Name	Drilled For		Service Via		Casing/Liner					
PD461			Land		Depth, ft	Size, in	Weight, lb/ft	Grade	Thread	
Offshore Zone	Well Class		Well Type		1899.0	9.6	36.0	J55		
	New				13199.0	5.5	17.0	P110		
Drilling Fluid Type		Max. Density	Plastic Viscosity		Tubing/Drill Pipe					
Bentonite		9.40 lb/gal	23.000 cP		T/D	Depth, ft	Size, in	Weight, lb/ft	Grade	Thread
Service Line	Job Type				Perforations/Open Hole					
Cementing	5.5" Production				Top, ft	Bottom, ft	shot/ft	No. of Shots	Total Interval	
					ft	ft			ft	
					ft	ft			Diameter	
					ft	ft			in	
Max. Allowed Tub. Press	Max. Allowed Ann. Press		WH Connection		Treat Down	Displacement	Packer Type	Packer Depth		
psi	psi				Casing	307.0 bbl		ft		
					Tubing Vol.	Casing Vol.	Annular Vol.	Openhole Vol.		
					bbl	307.0 bbl	405.0 bbl	bbl		
Casing/Tubing Secured		1 Hole Vol. Circulated prior to Cement			Casing Tools			Squeeze Job		
<input checked="" type="checkbox"/>		<input checked="" type="checkbox"/>								
Lift Pressure					Shoe Type		Squeeze Type			
2200 psi					Float					
Pipe Rotated		Pipe Reciprocated			Shoe Depth		Tool Type			
<input type="checkbox"/>		<input type="checkbox"/>			13199.0 ft					
No. Centralizers		Top Plugs	Bottom Plugs			Stage Tool Type		Tool Depth		
		2	1					ft		
Cement Head Type					Stage Tool Depth		Tail Pipe Size			
Double					ft		in			
Job Scheduled For		Arrived on Location		Leave Location	Collar Type		Tail Pipe Depth			
Mar/13/2020 09:00		Mar/13/2020 09:35		Mar/13/2020 17:35	Float		ft			
					Collar Depth		Sqz. Total Vol.			
					13186.0 ft		bbl			
Date	Time 24-hr clock	Treating Pressure PSI	Flow Rate B/M	Density LB/G	Volume BBL	Message				
03/13/2020	12:32:00	3	0.0	8.39	0.0	Start Job				
03/13/2020	12:32:05	4	0.0	8.39	0.0	Check Fluid: Full/Full				
03/13/2020	12:33:00	3	0.0	8.39	0.0	Flush lines				
03/13/2020	12:40:00	6229	0.0	8.40	5.2	Pressure Test Lines				
03/13/2020	12:41:00	6134	0.0	8.39	5.2	1000/6000 psi				
03/13/2020	12:43:00	149	0.0	8.39	5.2	Start Pumping Spacer				
03/13/2020	12:53:00	958	6.1	11.00	42.4	CemPRIME SCRUB = 60 bbl				
03/13/2020	13:02:00	1057	8.3	10.96	114.5	MPE = 51 bbl				
03/13/2020	13:03:00	33	0.0	11.07	117.3	Reset Total, Vol = 111 bbl				
03/13/2020	13:06:00	653	4.4	11.65	120.0	Start Mixing Lead Slurry				
03/13/2020	13:07:00	623	4.4	11.77	124.3	539 sks @ 12.0 ppg				
03/13/2020	13:08:00	992	6.3	11.88	129.2	Yield = 1.84 cf/sk, MF = 7.49 gal/sk				
03/13/2020	13:09:00	1387	8.2	11.95	136.2	Dry and Wet Samples Collected				
03/13/2020	13:10:00	1384	8.2	12.00	144.4	Mud Balance = 12.0 ppg				
03/13/2020	13:24:00	1052	8.1	12.00	256.4	End Lead Slurry				
03/13/2020	13:25:00	1035	8.1	12.00	264.6	Reset Total, Vol = 177 BBL				
03/13/2020	13:30:59	495	6.4	13.40	303.1	Start Mixing Tail Slurry				
03/13/2020	13:31:11	540	6.4	13.49	304.4	573 sks @ 13.5 ppg				
03/13/2020	13:31:13	538	6.4	13.49	304.6	Yield = 1.64 cf/sk, MF = 7.95 gal/sk				
03/13/2020	13:31:15	525	6.4	13.49	304.8	Dry and Wet Samples Collected				
03/13/2020	13:31:17	516	6.4	13.46	305.0	Mud balance = 13.5 ppg				

Well		Field		Job Start		Customer		Job Number	
MAE J 8-6HZ		DJ		Mar/13/2020		ANADARKO		EAJ7-01262	
Date	Time 24-hr clock	Treating Pressure PSI	Flow Rate B/M	Density LB/G	Volume BBL	Message			
03/13/2020	13:51:00	652	8.3	13.62	462.5	Reset Total, Vol = 169 BBL			
03/13/2020	13:58:00	15	0.0	9.10	466.2	Washup Lines			
03/13/2020	14:07:00	17	0.0	8.42	481.9	Drop Top Plug 1			
03/13/2020	14:07:02	19	0.0	8.42	481.9	Pump 1 BBL			
03/13/2020	14:08:21	116	0.0	8.42	481.9	Drop Top Plug2			
03/13/2020	14:08:23	101	0.0	8.42	481.9	Start Displacement			
03/13/2020	14:13:11	297	8.3	8.40	516.7	Lifting Cement @ 40 BBL into			
03/13/2020	14:47:31	1983	2.2	8.39	777.6	Slow down			
03/13/2020	14:47:44	1982	2.2	8.39	778.0	50 BBL Spacer to Surface			
03/13/2020	14:52:00	1951	2.2	8.39	787.4	Bump Plug @ 3000 Psi			
03/13/2020	14:54:00	2994	0.0	8.39	790.8	End Displacement			
03/13/2020	14:54:10	2966	0.0	8.39	790.8	Reset Total, Vol = 307 BBL			
03/13/2020	14:54:16	3067	0.0	8.39	790.8	Shear at 3200 Psi			
03/13/2020	14:58:28	3083	0.0	8.39	792.1	Casing Pressure Test : 3000 Psi			
03/13/2020	15:10:00	3281	0.0	8.40	792.1	Shear at 4800 Psi			
03/13/2020	15:14:00	2042	2.2	8.40	795.4	Pump 2 bbl			
03/13/2020	15:16:00	3	0.0	8.40	795.8	Bleed off, Floats hold			

Post Job Summary

Average Pump Rates, bbl/min				Volume of Fluid Injected, bbl			
Slurry	N2	Mud	Maximum Rate	Total Slurry	Mud	Spacer	N2
6.5			8.4	346.0	0.0	110.0	
Treating Pressure Summary, psi				Breakdown Fluid			
Maximum	Final	Average	Bump Plug to	Breakdown	Type	Volume	Density
6535	0	953	3000			bbl	lb/gal
Avg. N2 Percent	Designed Slurry Volume		Displacement	Mix Water Temp	Cement Circulated to Surface?	Volume	
%	345.0 bbl		307.0 bbl	61 degF	<input type="checkbox"/>	bbl	
					Washed Thru Perfs	To	
					<input type="checkbox"/>	ft	
Customer or Authorized Representative			Schlumberger Supervisor			Circulation Lost	Job Completed
Zach Haynes			Bharatsai Alla			<input type="checkbox"/>	<input checked="" type="checkbox"/>
						-	-