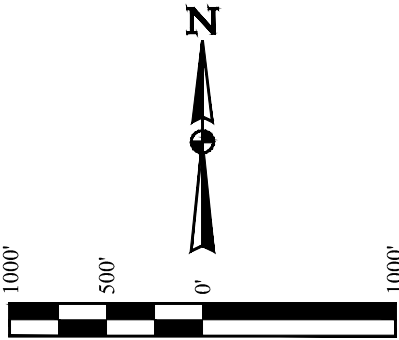
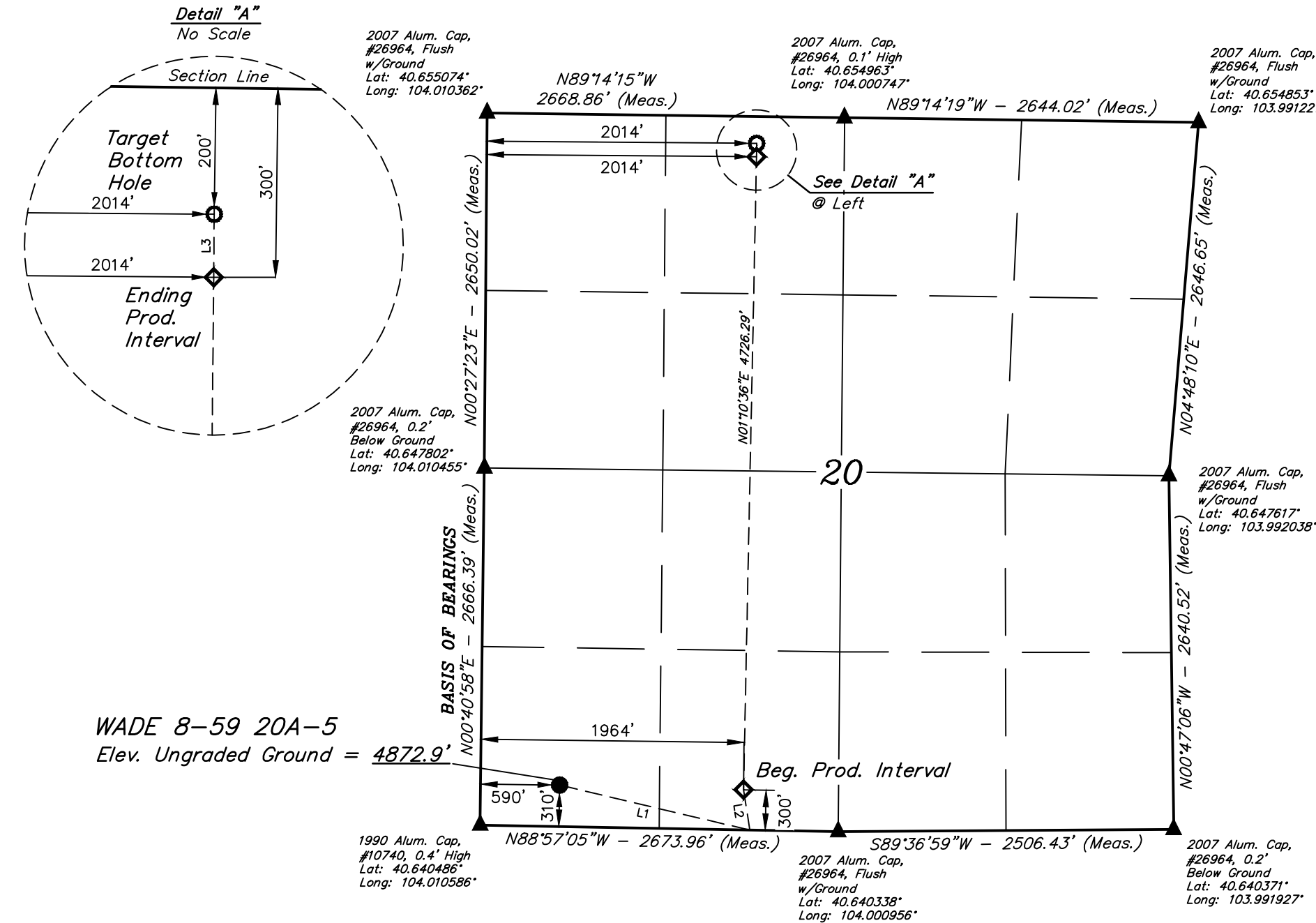


BASIS OF ELEVATION

SPOT ELEVATION LOCATED AT THE NORTHEAST CORNER OF SECTION 2, T9N, R61W, 6th P.M., TAKEN FROM THE GROVER SOUTH, QUADRANGLE, COLORADO, WELD COUNTY, 7.5 MINUTE QUAD (TOPOGRAPHICAL MAP) PUBLISHED BY THE UNITED STATES DEPARTMENT OF THE INTERIOR, GEOLOGICAL SURVEY. SAID ELEVATION IS MARKED AS BEING 5043 FEET.



LINE TABLE		
LINE	DIRECTION	LENGTH
L1	S76°41'35"E	1459.85'
L2	N08°52'42"W	304.56'
L3	N00°27'23"E	100.00'



WADE 8-59 20A-5
Elev. Ungraded Ground = 4872.9'

LEGEND:

- = PROPOSED WELLHEAD.
- ◇ = PRODUCTION INTERVAL.
- = TARGET BOTTOM HOLE.
- ▲ = SECTION CORNERS LOCATED. (NAD 83)

NOTE:
Distances referenced on plat to section lines are perpendicular.

SURFACE LOCATION 310' FSL 590' FWL	BEG. PROD. INTERVAL 300' FSL 1964' FWL	ENDING PROD. INTERVAL 300' FNL 2014' FWL	TARGET BOTTOM HOLE 200' FNL 2014' FWL
NAD 83 (SURFACE LOCATION)	NAD 83 (BEG. PROD. INTERVAL)	NAD 83 (ENDING PROD. INTERVAL)	NAD 83 (TARGET BOTTOM HOLE)
LATITUDE = 40°38'28.69" (40.641304)	LATITUDE = 40°38'28.32" (40.641201)	LATITUDE = 40°39'15.00" (40.654167)	LATITUDE = 40°39'15.99" (40.654441)
LONGITUDE = 104°00'30.40" (104.008446)	LONGITUDE = 104°00'12.59" (104.003498)	LONGITUDE = 104°00'11.22" (104.003117)	LONGITUDE = 104°00'11.21" (104.003113)
NAD 27 (SURFACE LOCATION)	NAD 27 (BEG. PROD. INTERVAL)	NAD 27 (ENDING PROD. INTERVAL)	NAD 27 (TARGET BOTTOM HOLE)
LATITUDE = 40°38'28.74" (40.641316)	LATITUDE = 40°38'28.37" (40.641213)	LATITUDE = 40°39'15.05" (40.654179)	LATITUDE = 40°39'16.03" (40.654454)
LONGITUDE = 104°00'28.59" (104.007941)	LONGITUDE = 104°00'10.77" (104.002992)	LONGITUDE = 104°00'09.40" (104.002612)	LONGITUDE = 104°00'09.39" (104.002608)
STATE PLANE NAD 83 (CO. NORTH)	STATE PLANE NAD 83 (CO. NORTH)	STATE PLANE NAD 83 (CO. NORTH)	STATE PLANE NAD 83 (CO. NORTH)
N: 1479950.36 E: 3413915.12	N: 1479935.96 E: 3415288.78	N: 1484660.95 E: 3415314.67	N: 1484760.92 E: 3415313.96
STATE PLANE NAD 27 (CO. NORTH)	STATE PLANE NAD 27 (CO. NORTH)	STATE PLANE NAD 27 (CO. NORTH)	STATE PLANE NAD 27 (CO. NORTH)
N: 479948.93 E: 2414066.25	N: 479934.51 E: 2415439.96	N: 484659.42 E: 2415465.77	N: 484759.39 E: 2415465.06

PDOP = 1.4

CERTIFICATE

THIS IS TO CERTIFY THAT THE ABOVE PLAT WAS PREPARED FROM FIELD NOTES OF ACTUAL SURVEYS MADE BY ME OR UNDER MY SUPERVISION, AND THAT THE SAME ARE TRUE AND CORRECT TO THE BEST OF MY KNOWLEDGE AND BELIEF.

REGISTERED LAND SURVEYOR
REGISTRATION NO. 28285
STATE OF COLORADO

REV: 2 04-08-20 K.B. (SL & BPI CHANGE)



UELS, LLC
Corporate Office * 85 South 200 East
Vernal, UT 84078 * (435) 789-1017

SURVEYED BY	JAMES FRESHWATER, G.B.	10-31-17	SCALE
DRAWN BY	D.COX	11-08-17	1" = 1000'

WELL LOCATION PLAT