

Baker Hughes				LWD MEMORY LOG			
Scale: 1:240 True Vertical Depth				Company: Noble Energy Well: Gutteresen D34-769 Field: Wattenberg Country: Weld State: Colorado County: United States			
Depth Reference:		Driller's Depth		Surface Location:		Other Services:	
Status:		Final Print		Latitude: Longitude:		40° 12' 23.058" N 104° 32' 29.800" W	
API No:		05-123-48553-00		SEC: 22 TWN: 3N RGE: 64W		Directional	
Job ID:		110311131		Elevation: Above P.D.:		0.00 ft 4854.00 ft	
Permanent Datum (P.D.):		Mean Sea Level		Elev. KB: Elev. DF: Elev. GL:		N/A 4854.00 ft 4824.00 ft	
Log Measured From:		Rig Floor		Magnetic Field Reference			
Dates		Interval		Azimuth Reference North: Grid Dip Angle: (deg)			
From: 2020-03-14		Drilled (ft)		Logged (ft)		66.63	
To: 2020-03-16		Top: 1965.00		Top: 1965.00		51979	
Spud: 2020-03-07		Bottom: 17435.00		Bottom: 17422.00		Mag to Reference North Correction: (deg)	
Borehole Record		Casing Record					
Hole Size (in)		From (ft)		To (ft)		Size (in)	
13.500		30.00		1965.00		9.625	
8.500		1965.00		17435.00		36.00	
						30.00	
						1955.00	

(C) 2019 Baker Hughes Company - All rights reserved. Baker Hughes Company and its affiliates ("BHC") provides this information on an "as is" basis for general information purposes and believes it to be accurate as of the date of publication. BHC does not make any representation as to the accuracy or completeness of the information and makes no warranties of any kind, specific, implied or oral, to the fullest extent permissible by law, including those of merchantability and fitness for a particular purpose or use. BHC hereby disclaims any and all liability for any direct, indirect, consequential or special damages, claims for lost profits, or third party claims arising from the use of the information, whether a claim is asserted in contract, tort, or otherwise. The BHC logo is a trademark of Baker Hughes Company.

Log Run Summary

Run No	Bit Run No.	Bit Size (in)	Bit Type	Bit Gauge Length (in)	Assembly Type	Logged Interval		Bit Depth Interval		Date / Time		Circ. Hours (h)
						Top (ft)	Bottom (ft)	From (ft)	To (ft)	Start Logging	End Logging	
1	1	8.500	PDC	3.00	AutoTrak Curve	1965.00	17422.00	1965.00	17435.00	2020-03-14 14:41	2020-03-16 22:44	48.49

Crew

Name	Arrive Wellsite	Depart Wellsite	Name	Arrive Wellsite	Depart Wellsite	Name	Arrive Wellsite	Depart Wellsite
Andrew Hays	2020-03-14	2020-03-17						

Andrew Hays2020-03-142020-03-17

Mud Properties Record

Date / Time	Run No.	Depth (ft)	Mud Type	Density (ppg)	Viscosity (cP)	pH	Fluid Loss (cm3)	Oil / Water	Source	Total Chlorides (ppm)	K+ (%)
2020-03-14 16:00	1	2256.00	Oil Based Mud	9.4	11	N/A	19.2	71.8/17.2	Active Pit	26000	0.00
2020-03-15 16:00	1	9640.00	Oil Based Mud	9.6	12	N/A	18.3	70.2/18	Active Pit	29000	0.00
2020-03-16 16:00	1	16012.00	Oil Based Mud	9.6	14	N/A	18.8	71.4/16	Active Pit	25500	0.00

Equipment and Service Data

Run No.	Tool	Serial Number	Measurement	Sensor Offset (ft)	Bit Offset (ft)	Max O.D. (in)	Min I.D. (in)
1	AutoTrak Curve Steering Unit	14381997	Near Bit VSS	5.93	6.73	7.500	4.330
1	AutoTrak Curve Steering Unit	14381997	Near Bit Inclination	5.93	6.73	7.500	4.330
1	AutoTrak Curve MWD	12118955	Gamma (single)	2.77	12.90	7.000	3.250
1	AutoTrak Curve MWD	12118955	Directional (mag)	12.27	22.40	7.000	3.250

Service and Tool Mnemonics

Mnemonic	Name	Description
ATC SU	AutoTrak Curve SU	Auto Trak Curve Steering Unit
ATC MWD	AutoTrak Curve MWD	Auto Trak Curve MWD
ATC LCPM	AutoTrak Curve LCPM	Auto Trak Curve LCPM

Comments

1

Depth measurements were obtained from a depth control system not supplied or operated by Baker Hughes. Due to lack of control by Baker Hughes logging engineers, depth calibrations and measurements could not be independently verified.

2

Baker Hughes LWD Run 1 utilized 6 ¾ inch NaviGamma service (Gamma Ray and Directional) behind an 8 1/2 inch bit and rotary steerable assembly from 1965 to 17435 feet MD (1965 to 6777 feet TVD).

3

The Gamma Ray Apparent (GRAM) data is presented 0 to 300 API, per the customer's request.

4

There are several gaps in Gamma Ray data due to drilling ahead before the tool could power on.

Remarks

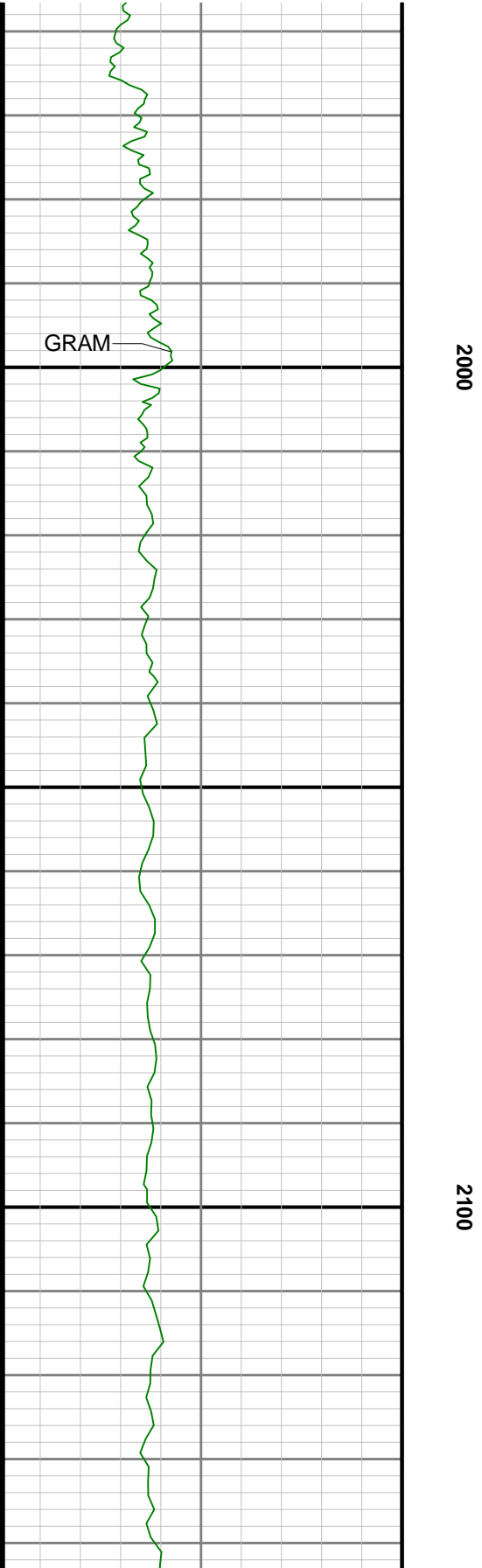
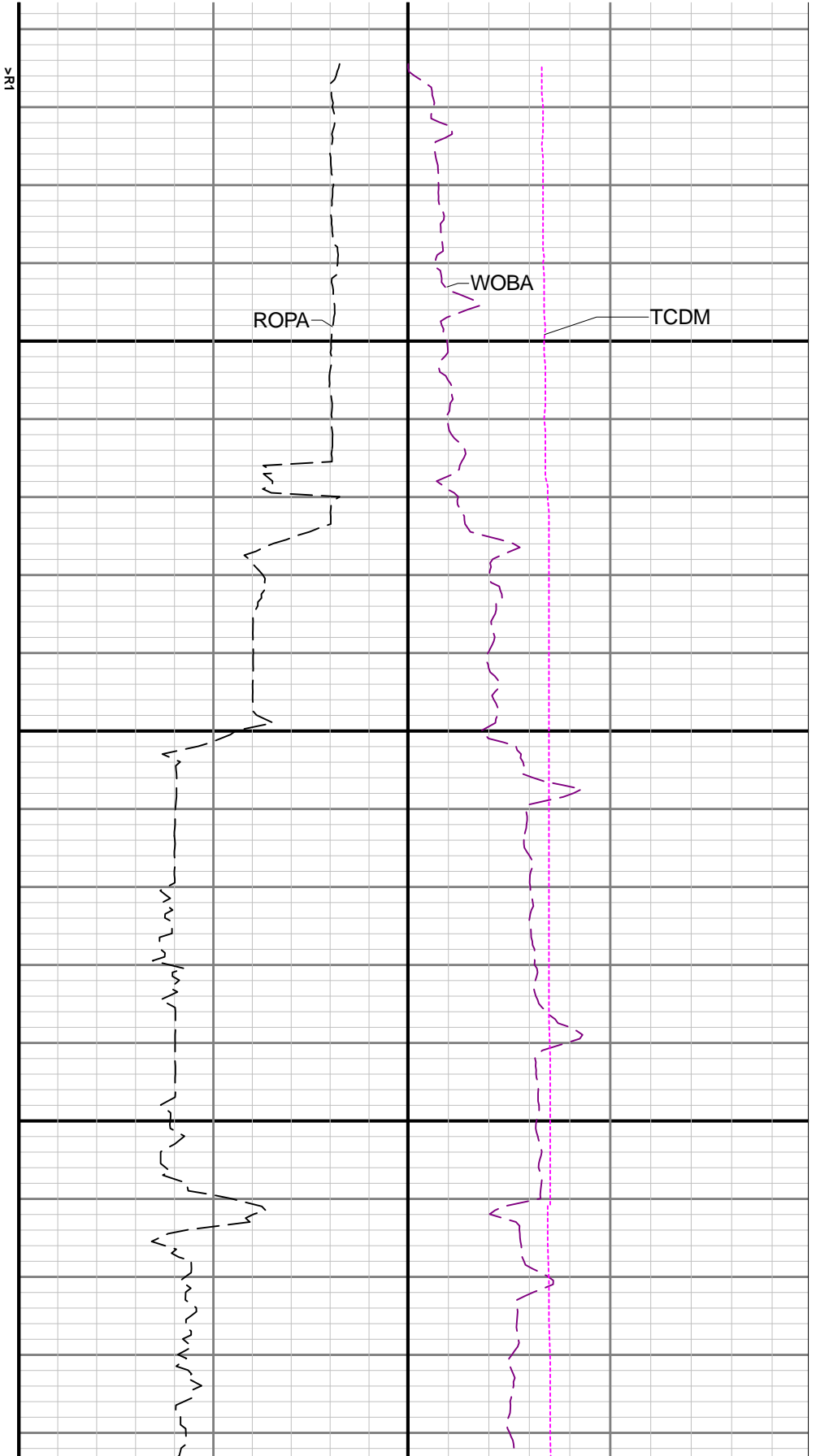
Number	Depth (ft)	Hole Section (in)	Run No.	Remark
--------	---------------	----------------------	---------	--------

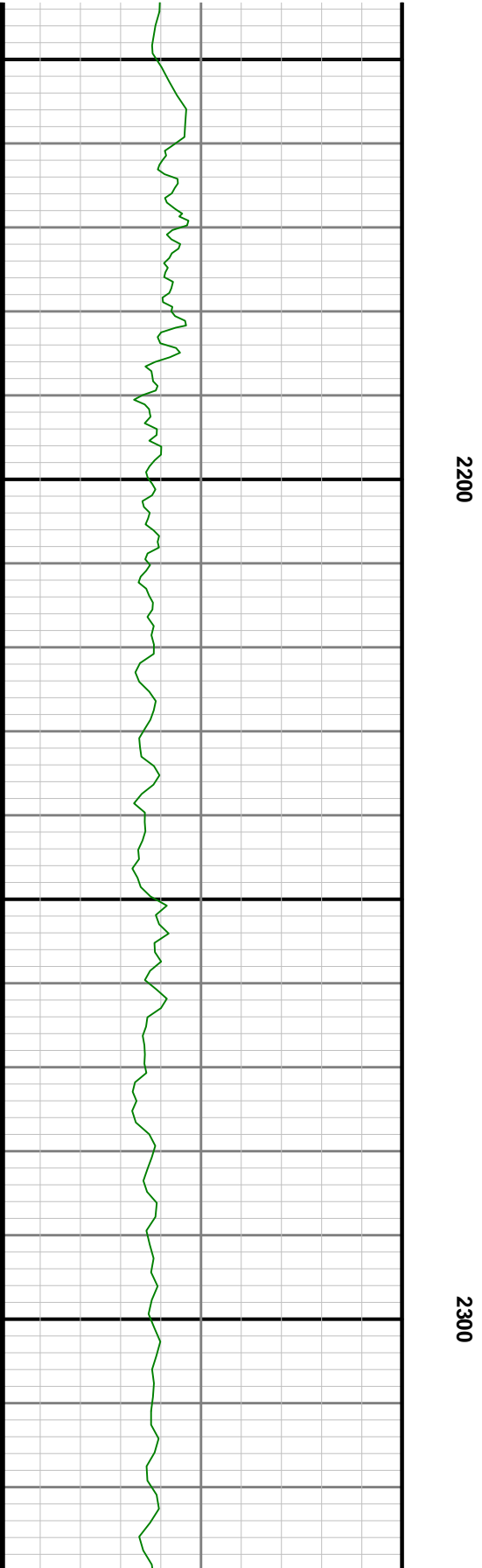
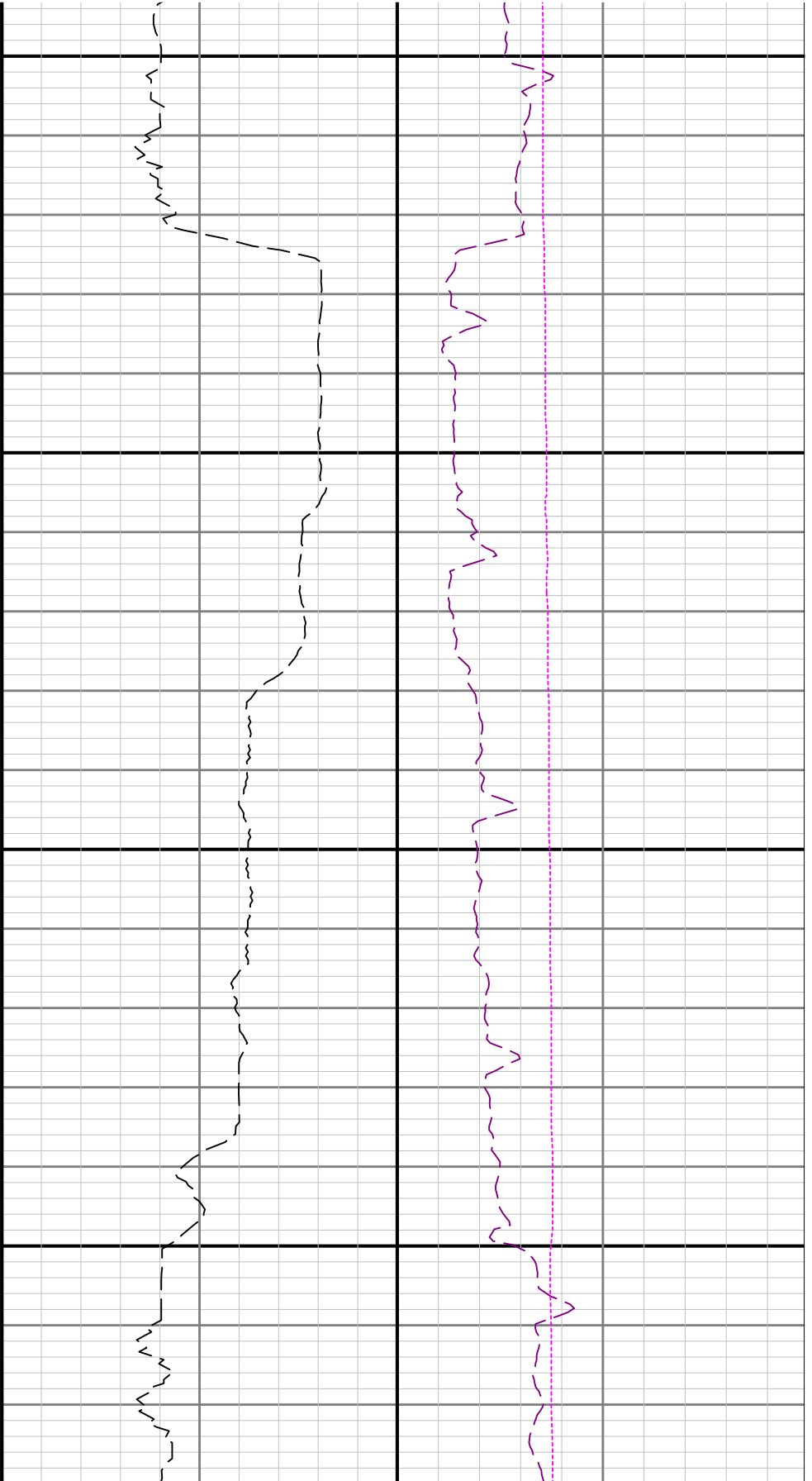
Curve Mnemonics

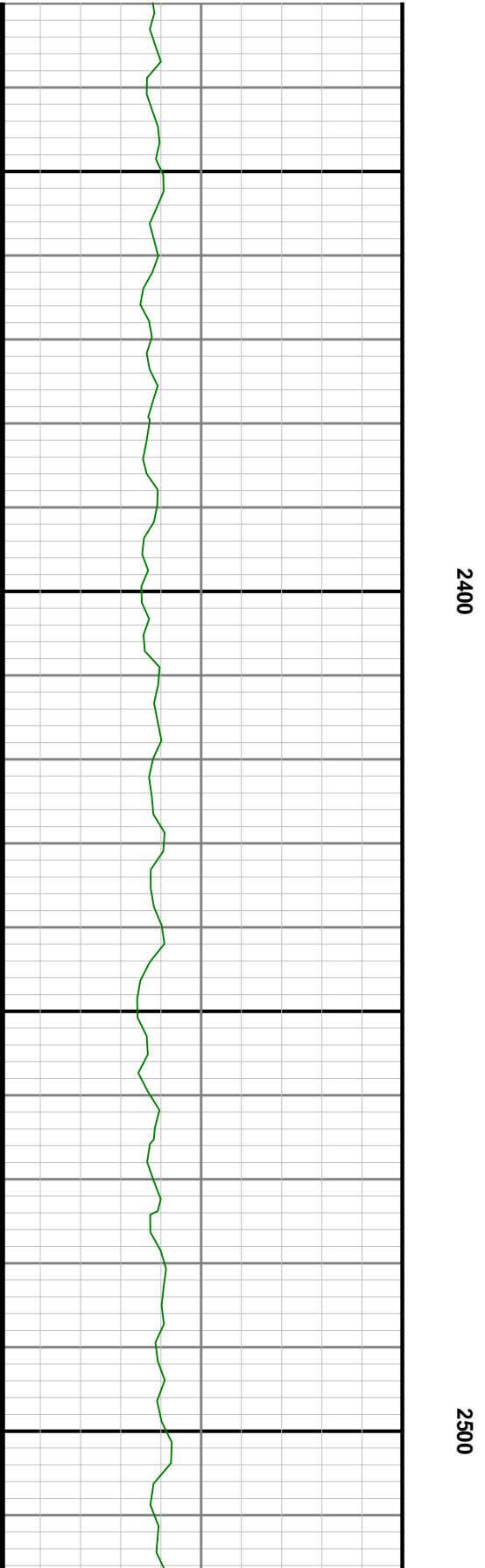
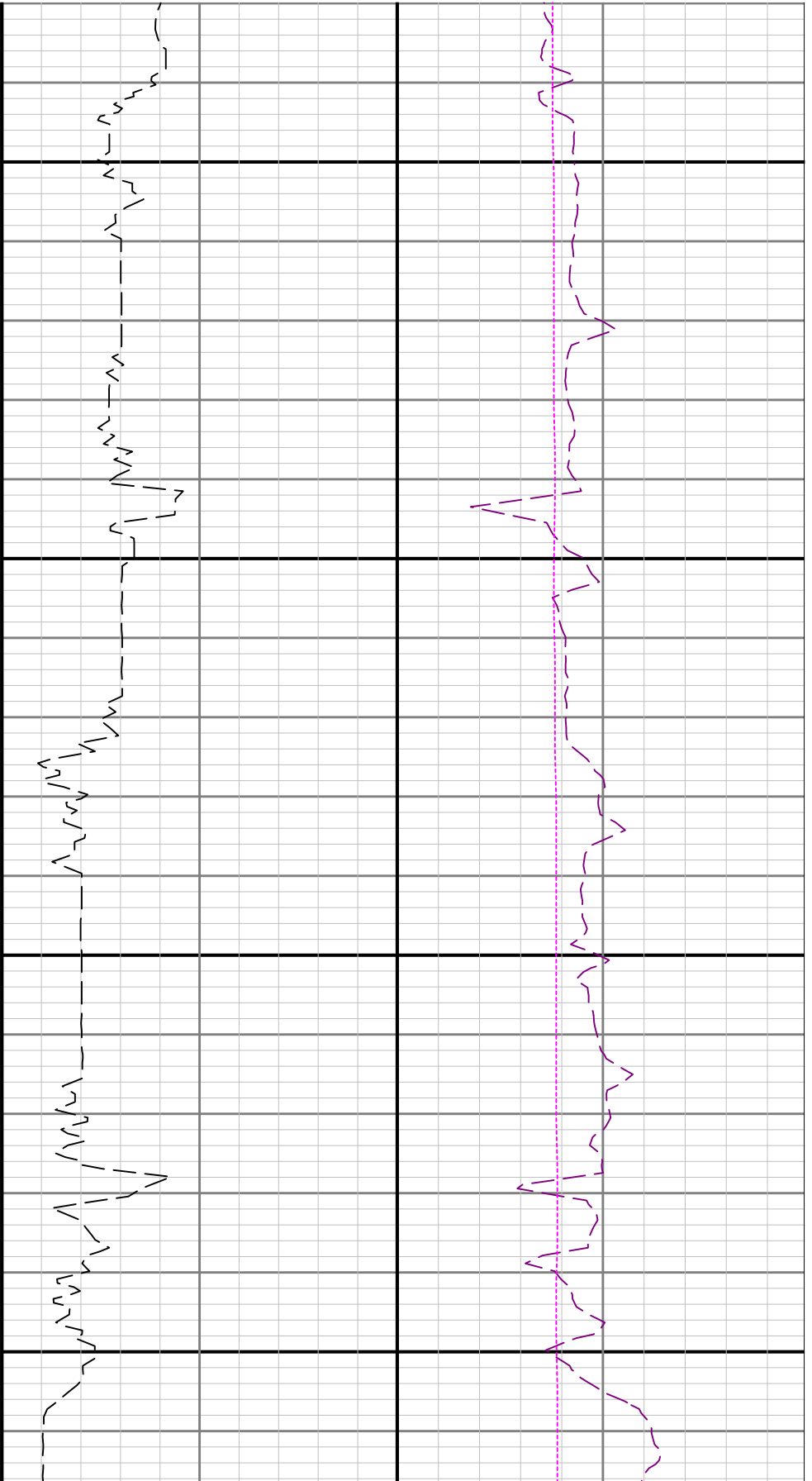
Presented Curves	Description	Units
ROPA	Depth Averaged ROP 3 ft Average	ft/h
WOBA	Weight On Bit 1 ft Average	klb
GRAM	Gamma Ray - Apparent - Memory 0.5 ft Average	API
TCDM	Directional Real-Time Survey Temperature	degF

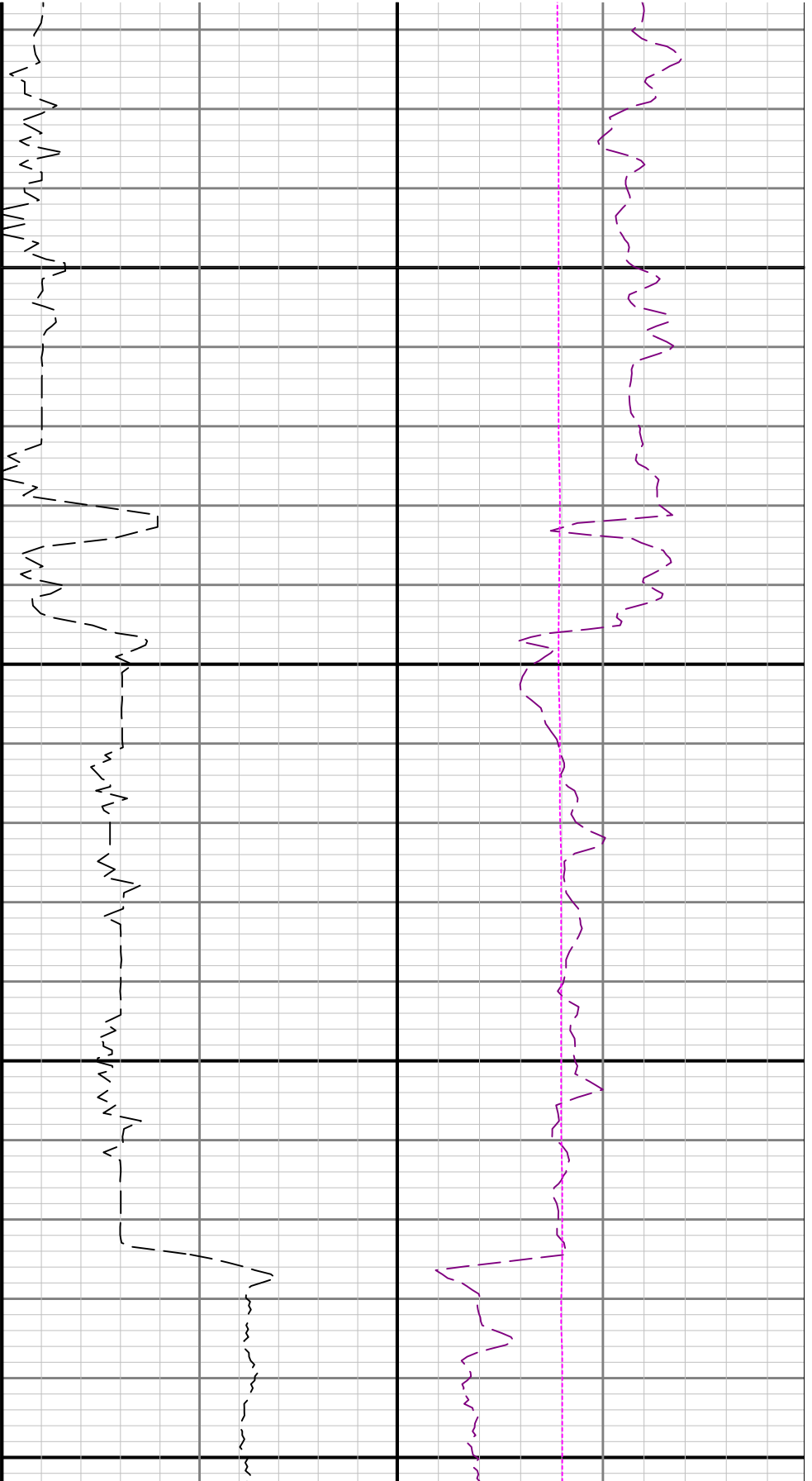
Gamma Ray - Apparent 0.5 ft Average GRAM	TVD 1:240 feet	Depth Averaged ROP 3 ft Average ROPA	Weight On Bit, Average 1 ft Average WOBA
0300		10000	050
API		ft/h	klb
			Downhole Temperature TCDM
			0300
			degF

--	--	--	--	--	--	--	--	--	--	--	--	--	--	--	--	--	--	--	--	--	--	--	--	--	--	--	--	--	--	--	--	--	--	--	--	--	--	--	--	--	--	--	--	--	--	--	--	--	--	--	--	--	--	--	--	--	--	--	--	--	--	--	--	--	--	--	--	--	--	--	--	--	--	--	--	--	--	--	--	--	--	--	--	--	--	--	--	--	--	--	--	--	--	--	--	--	--	--	--	--	--	--	--	--	--	--	--	--	--	--	--	--	--	--	--	--	--	--	--	--	--	--	--	--	--	--	--	--	--	--	--	--	--	--	--	--	--	--	--	--	--	--	--	--	--	--	--	--	--	--	--	--	--	--	--	--	--	--	--	--	--	--	--	--	--	--	--	--	--	--	--	--	--	--	--	--	--	--	--	--	--	--	--	--	--	--	--	--	--	--	--	--	--	--	--	--	--	--	--	--	--	--	--	--	--	--	--	--	--	--	--	--	--	--	--	--	--	--	--	--	--	--	--	--	--	--	--	--	--	--	--	--	--	--	--	--	--	--	--	--	--	--	--	--	--	--	--	--	--	--	--	--	--	--	--	--	--	--	--	--	--	--	--	--	--	--	--	--	--	--	--	--	--	--	--	--	--	--	--	--	--	--	--	--	--	--	--	--	--	--	--	--	--	--	--	--	--	--	--	--	--	--	--	--	--	--	--	--	--	--	--	--	--	--	--	--	--	--	--	--	--	--	--	--	--	--	--	--	--	--	--	--	--	--	--	--	--	--	--	--	--	--	--	--	--	--	--	--	--	--	--	--	--	--	--	--	--	--	--	--	--	--	--	--	--	--	--	--	--	--	--	--	--	--	--	--	--	--	--	--	--	--	--	--	--	--	--	--	--	--	--	--	--	--	--	--	--	--	--	--	--	--	--	--	--	--	--	--	--	--	--	--	--	--	--	--	--	--	--	--	--	--	--	--	--	--	--	--	--	--	--	--	--	--	--	--	--	--	--	--	--	--	--	--	--	--	--	--	--	--	--	--	--	--	--	--	--	--	--	--	--	--	--	--	--	--	--	--	--	--	--	--	--	--	--	--	--	--	--	--	--	--	--	--	--	--	--	--	--	--	--	--	--	--	--	--	--	--	--	--	--	--	--	--	--	--	--	--	--	--	--	--	--	--	--	--	--	--	--	--	--	--	--	--	--	--	--	--	--	--	--	--	--	--	--	--	--	--	--	--	--	--	--	--	--	--	--	--	--	--	--	--	--	--	--	--	--	--	--	--	--	--	--	--	--	--	--	--	--	--	--	--	--	--	--	--	--	--	--	--	--	--	--	--	--	--	--	--	--	--	--	--	--	--	--	--	--	--	--	--	--	--	--	--	--	--	--	--	--	--	--	--	--	--	--	--	--	--	--	--	--	--	--	--	--	--	--	--	--	--	--	--	--	--	--	--	--	--	--	--	--	--	--	--	--	--	--	--	--	--	--	--	--	--	--	--	--	--	--	--	--	--	--	--	--	--	--	--	--	--	--	--	--	--	--	--	--	--	--	--	--	--	--	--	--	--	--	--	--	--	--	--	--	--	--	--	--	--	--	--	--	--	--	--	--	--	--	--	--	--	--	--	--	--	--	--	--	--	--	--	--	--	--	--	--	--	--	--	--	--	--	--	--	--	--	--	--	--	--	--	--	--	--	--	--	--	--	--	--	--	--	--	--	--	--	--	--	--	--	--	--	--	--	--	--	--	--	--	--	--	--	--	--	--	--	--	--	--	--	--	--	--	--	--	--	--	--	--	--	--	--	--	--	--	--	--	--	--	--	--	--	--	--	--	--	--	--	--	--	--	--	--	--	--	--	--	--	--	--	--	--	--	--	--	--	--	--	--	--	--	--	--	--	--	--	--	--	--	--	--	--	--	--	--	--	--	--	--	--	--	--	--	--	--	--	--	--	--	--	--	--	--	--	--	--	--	--	--	--	--	--	--	--	--	--	--	--	--	--	--	--	--	--	--	--	--	--	--	--	--	--	--	--	--	--	--	--	--	--	--	--	--	--	--	--	--	--	--	--	--	--	--	--	--	--	--	--	--	--	--	--	--	--	--	--	--	--	--	--	--	--	--	--	--	--	--	--	--	--	--	--	--	--	--	--	--	--	--	--	--	--	--	--	--	--	--	--	--	--	--	--	--	--	--	--	--	--	--	--	--	--	--	--	--	--	--	--	--	--	--	--	--	--	--	--	--	--	--	--	--	--	--	--	--	--	--	--	--	--	--	--	--	--	--	--	--	--	--	--	--	--	--	--	--	--	--	--	--	--	--	--	--	--	--	--	--	--	--	--	--	--	--	--	--	--	--	--	--	--	--	--	--	--	--	--	--	--	--	--	--	--	--	--	--	--	--	--	--	--	--	--	--	--	--	--	--	--	--	--	--	--	--	--	--	--	--	--	--	--	--	--	--	--	--	--	--	--	--	--	--	--	--	--	--	--	--	--	--	--	--	--	--	--	--	--	--	--	--	--	--	--	--	--	--	--	--	--	--	--	--	--	--	--	--	--	--	--	--	--	--	--	--	--	--	--	--	--	--	--	--	--	--	--	--	--	--	--	--	--	--	--	--	--	--	--	--	--	--	--	--	--	--	--	--	--	--



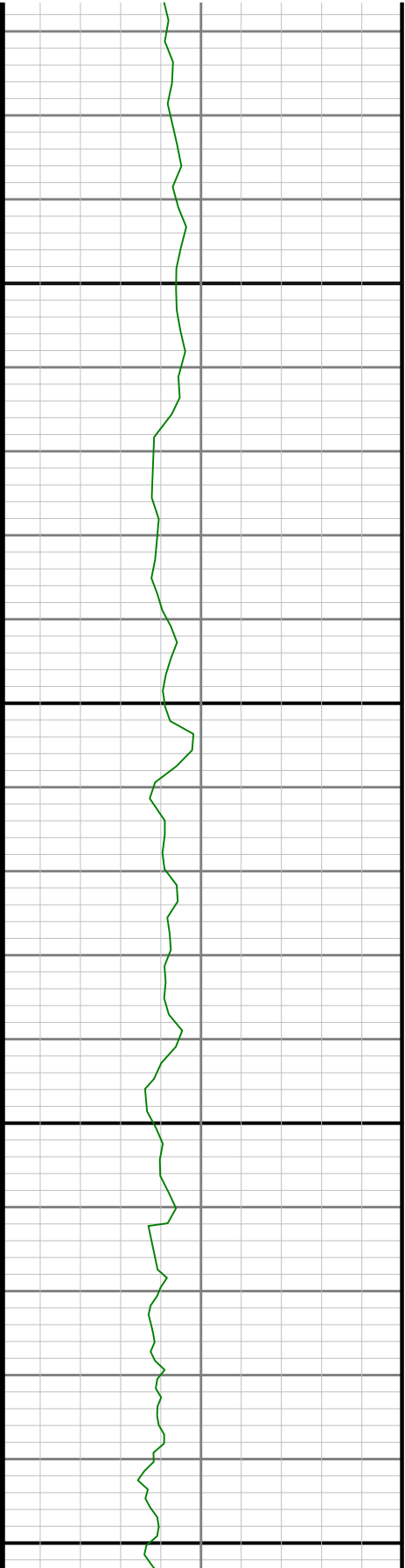


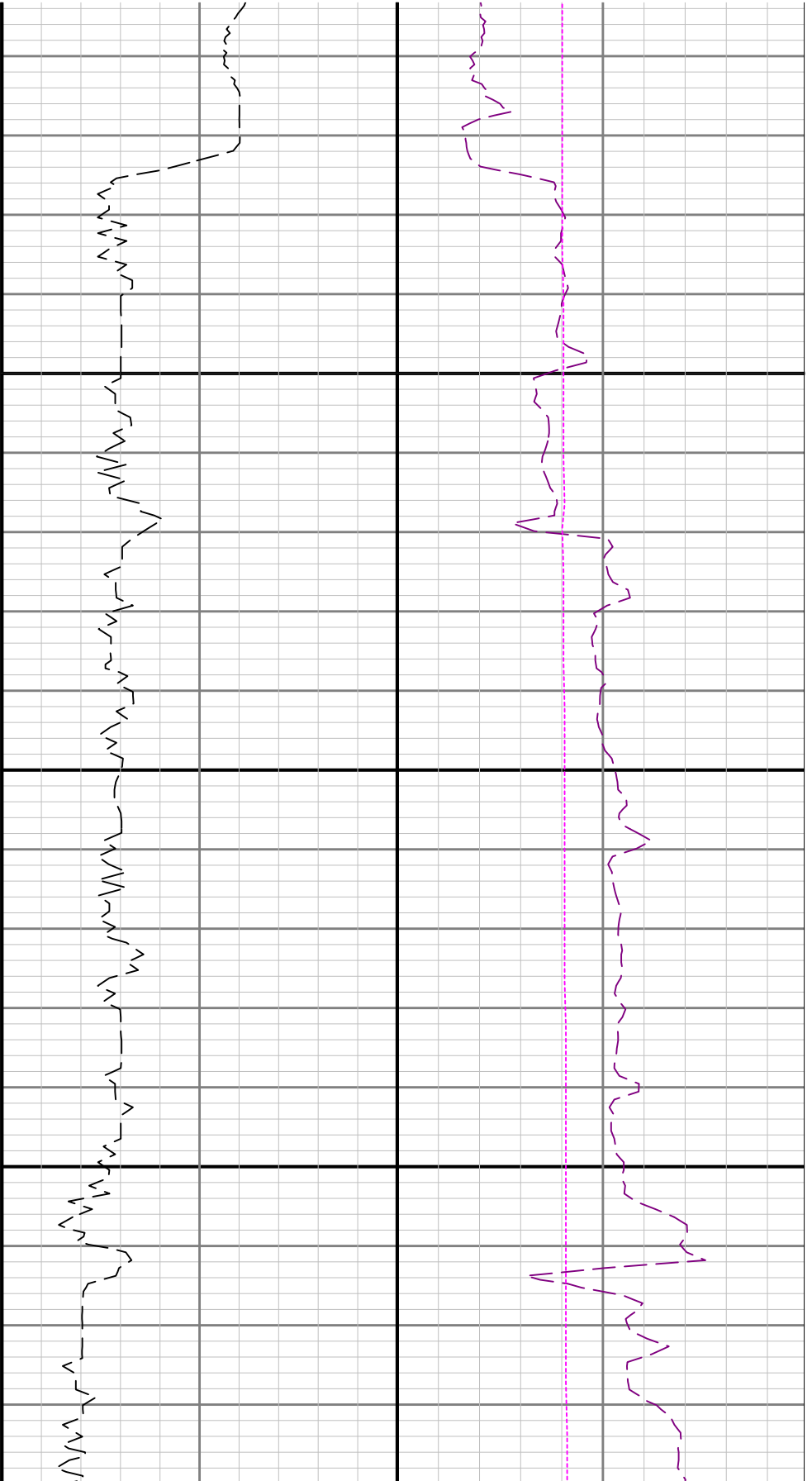




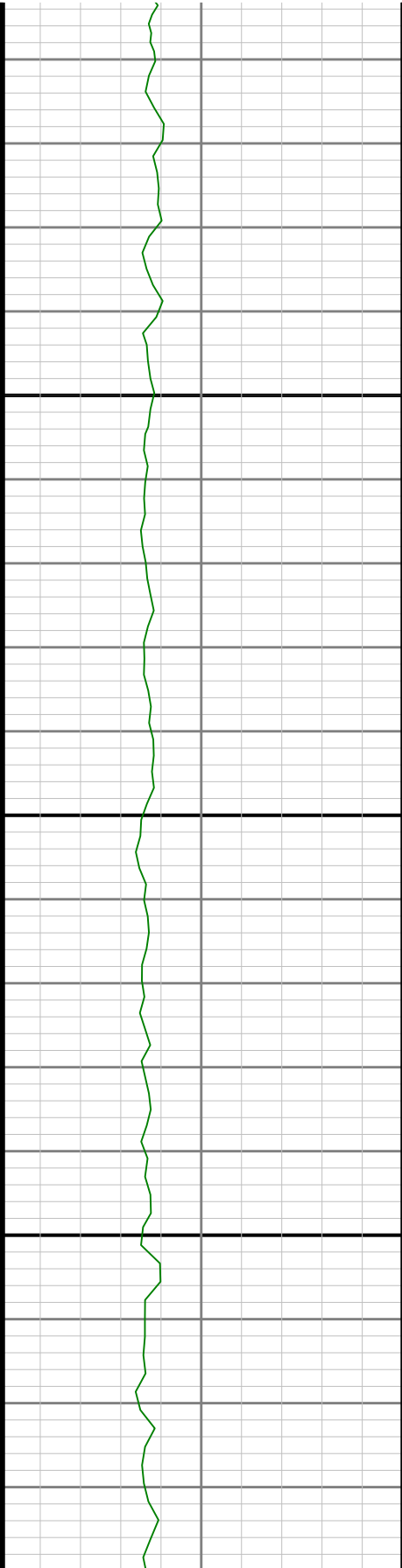
2600

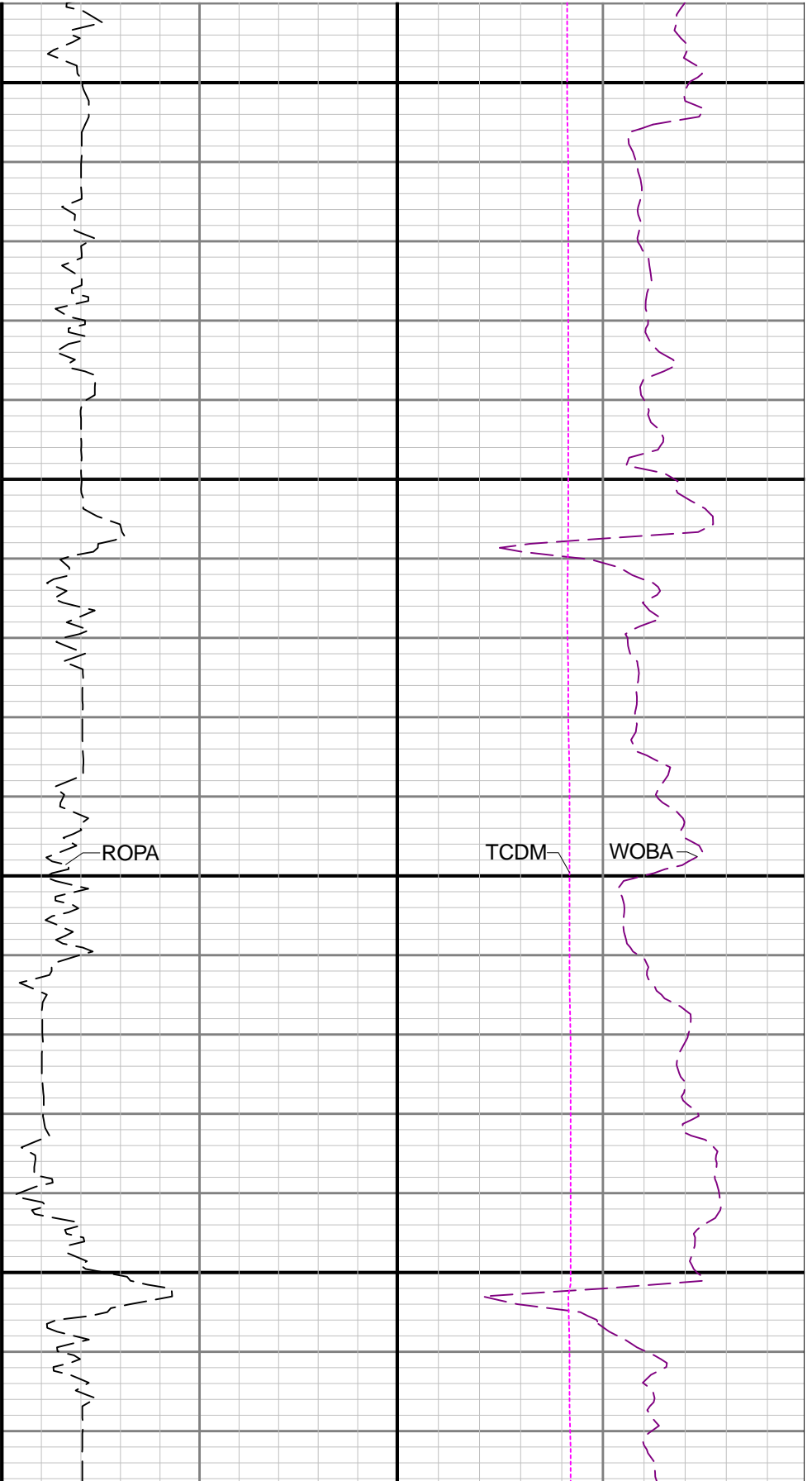
2700





2800





2900

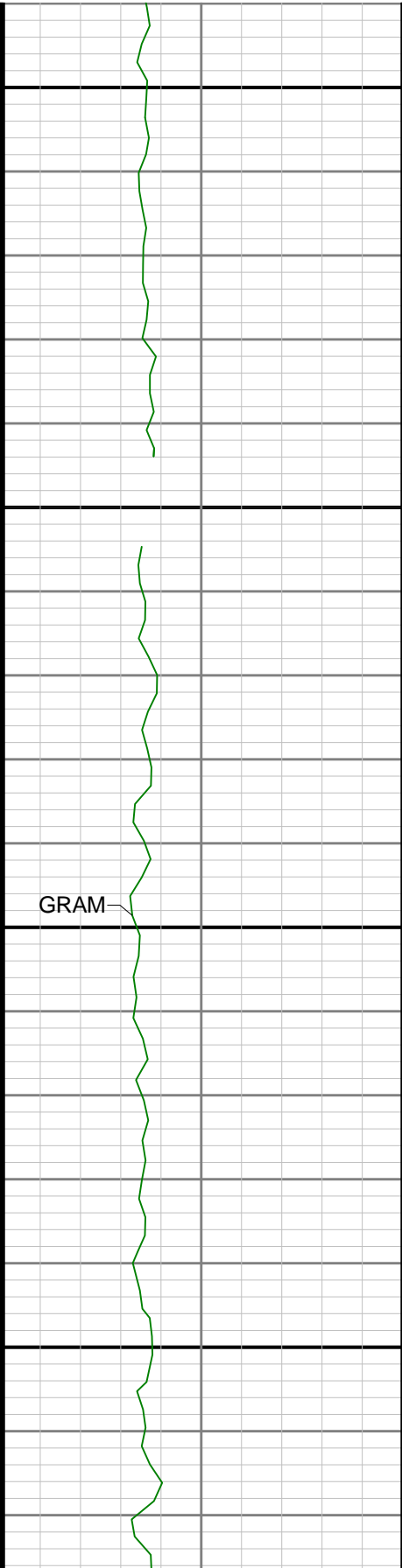
3000

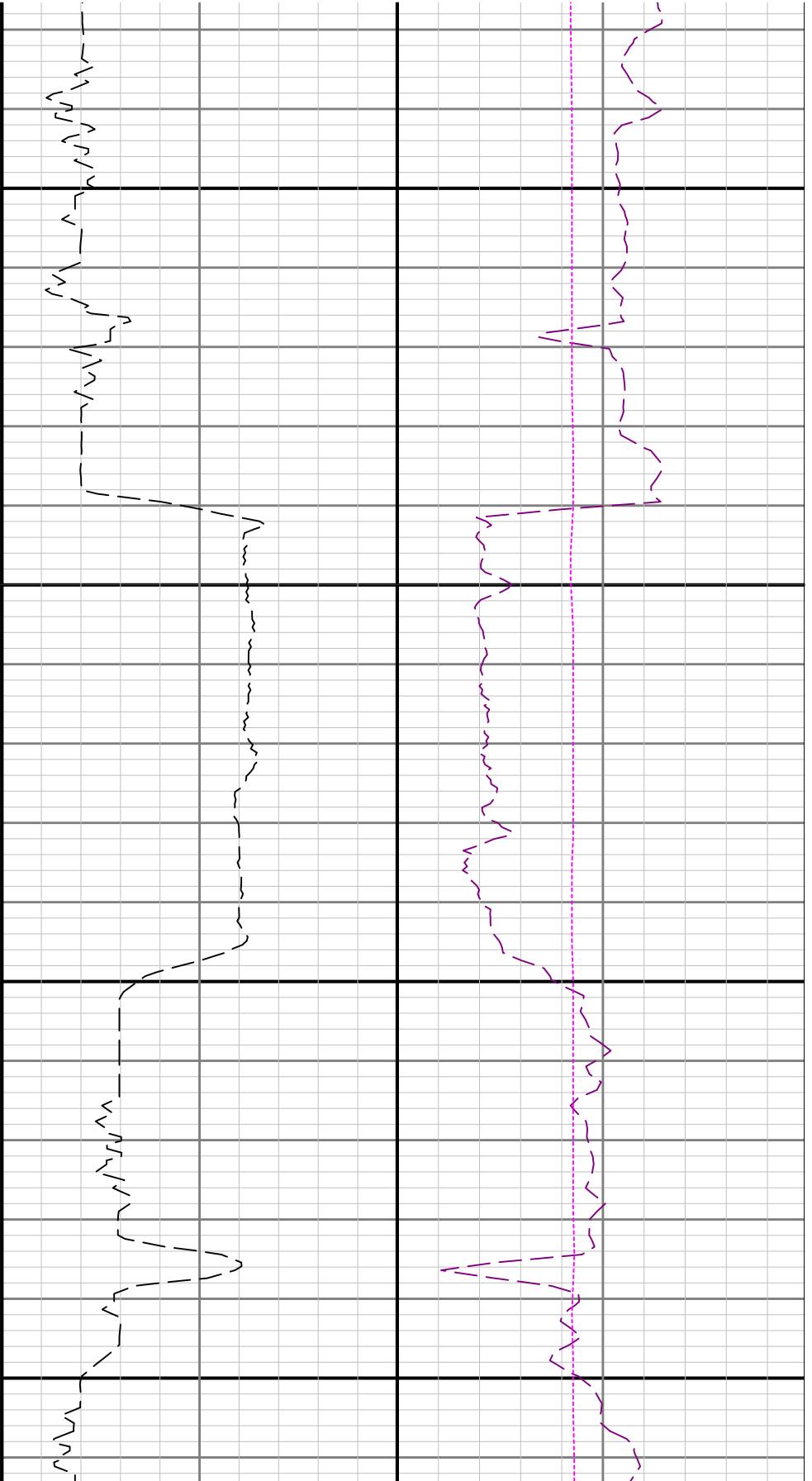
ROP

TCD

WOB

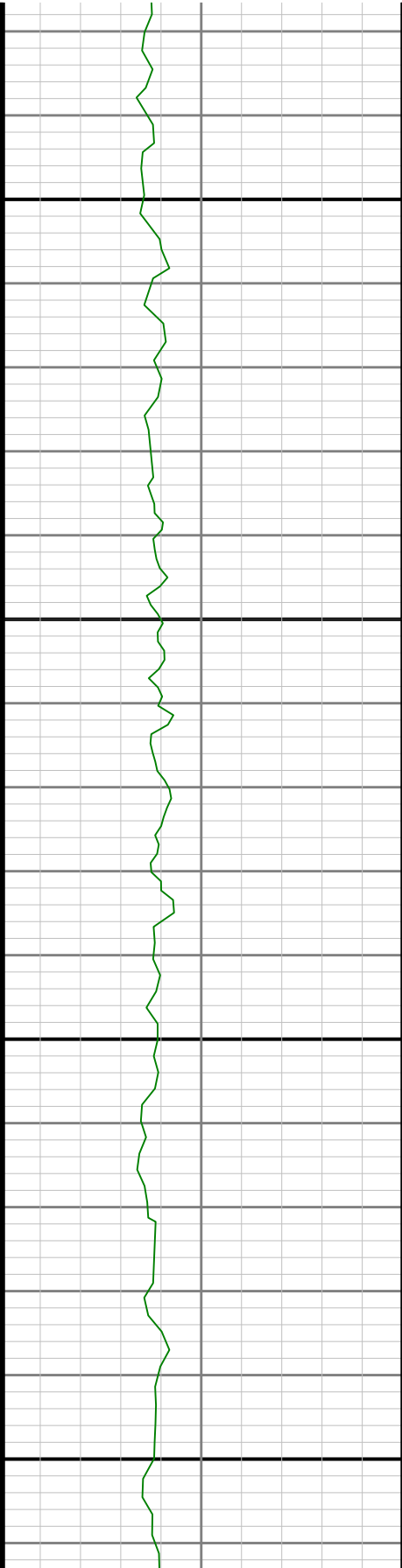
GRAM

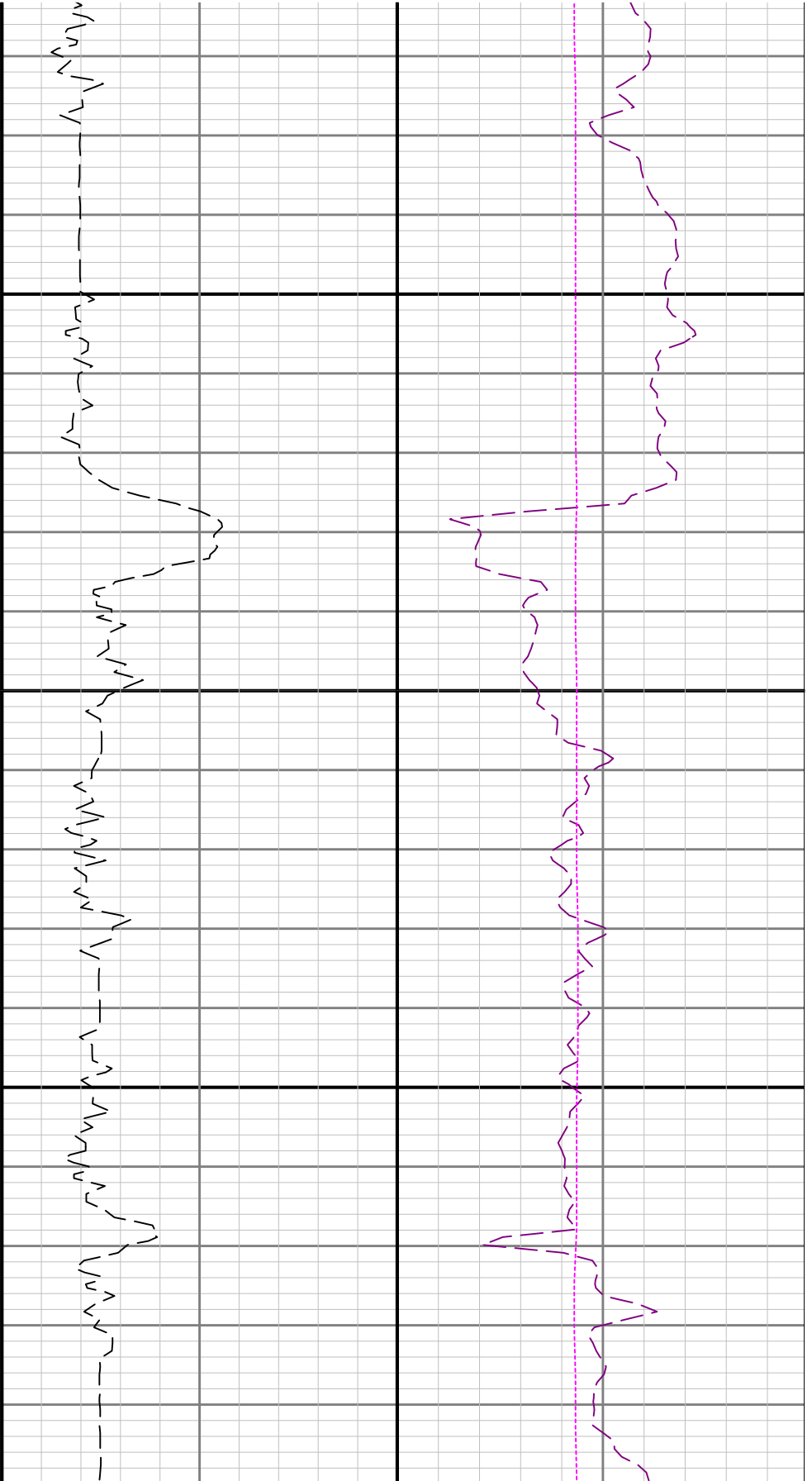




3100

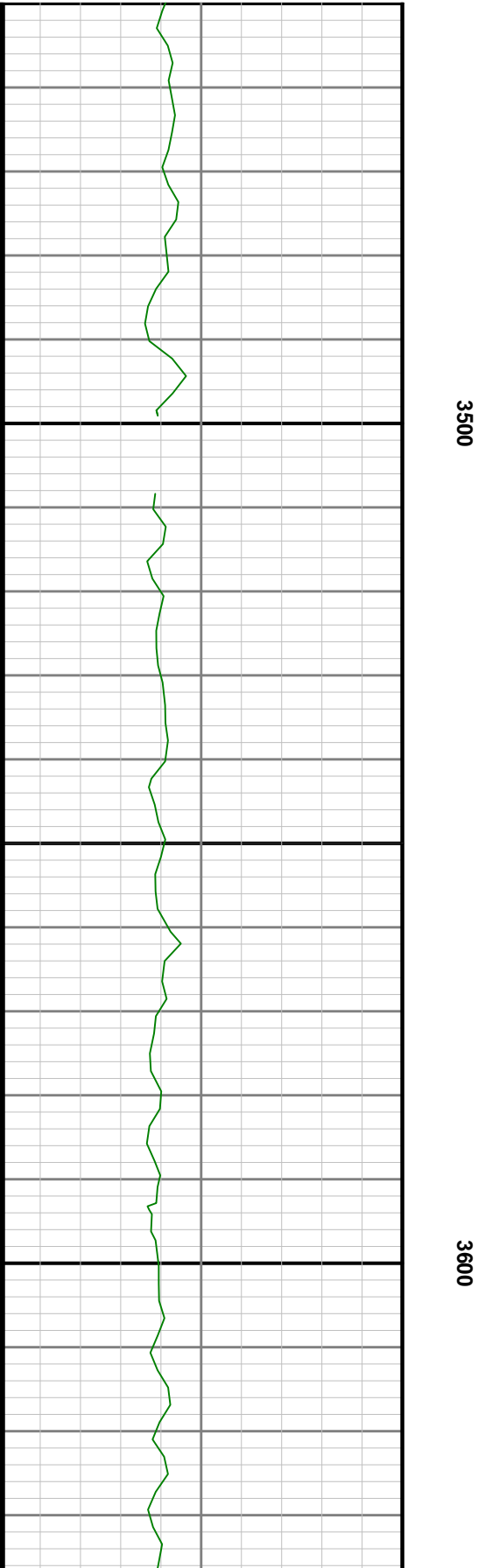
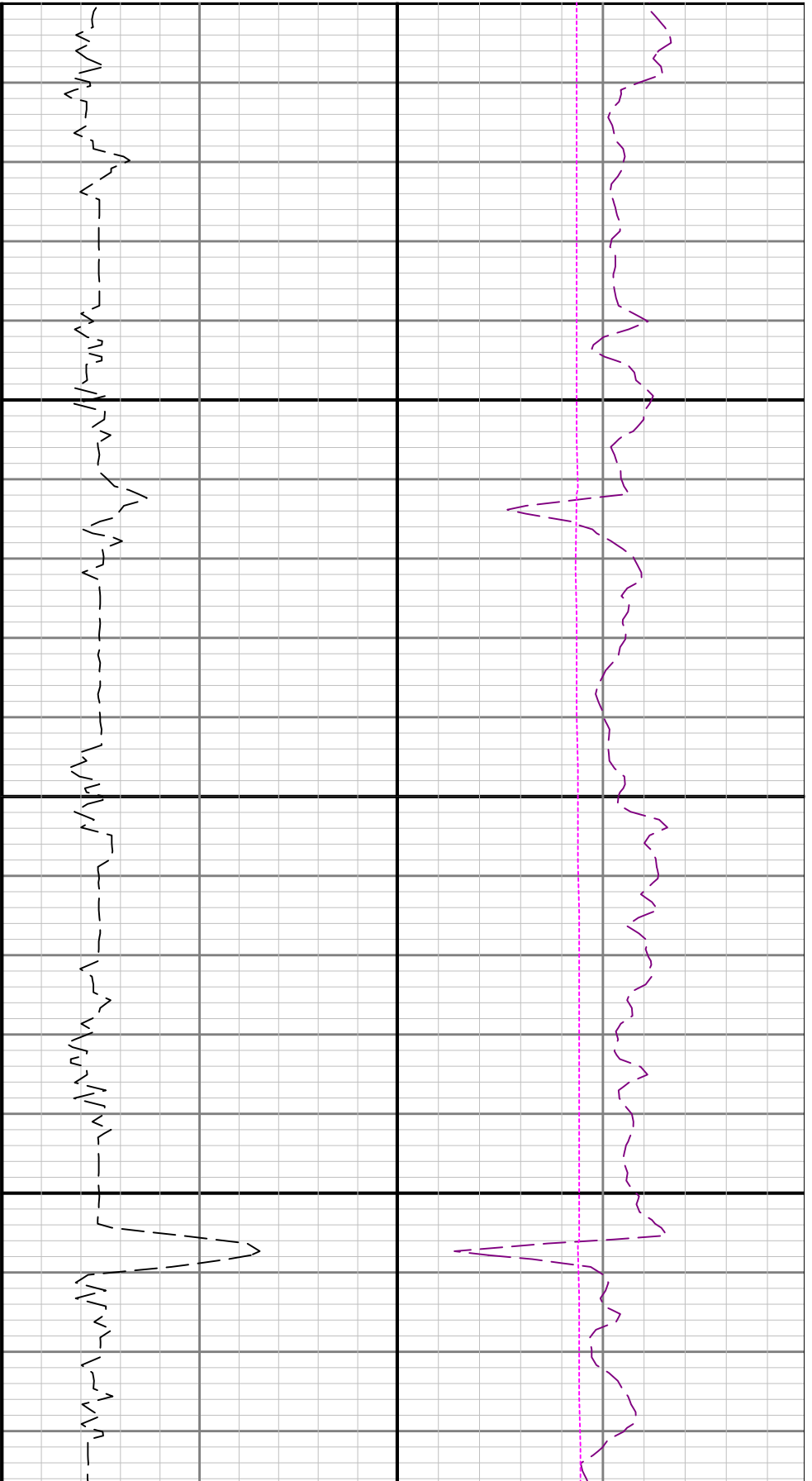
3200

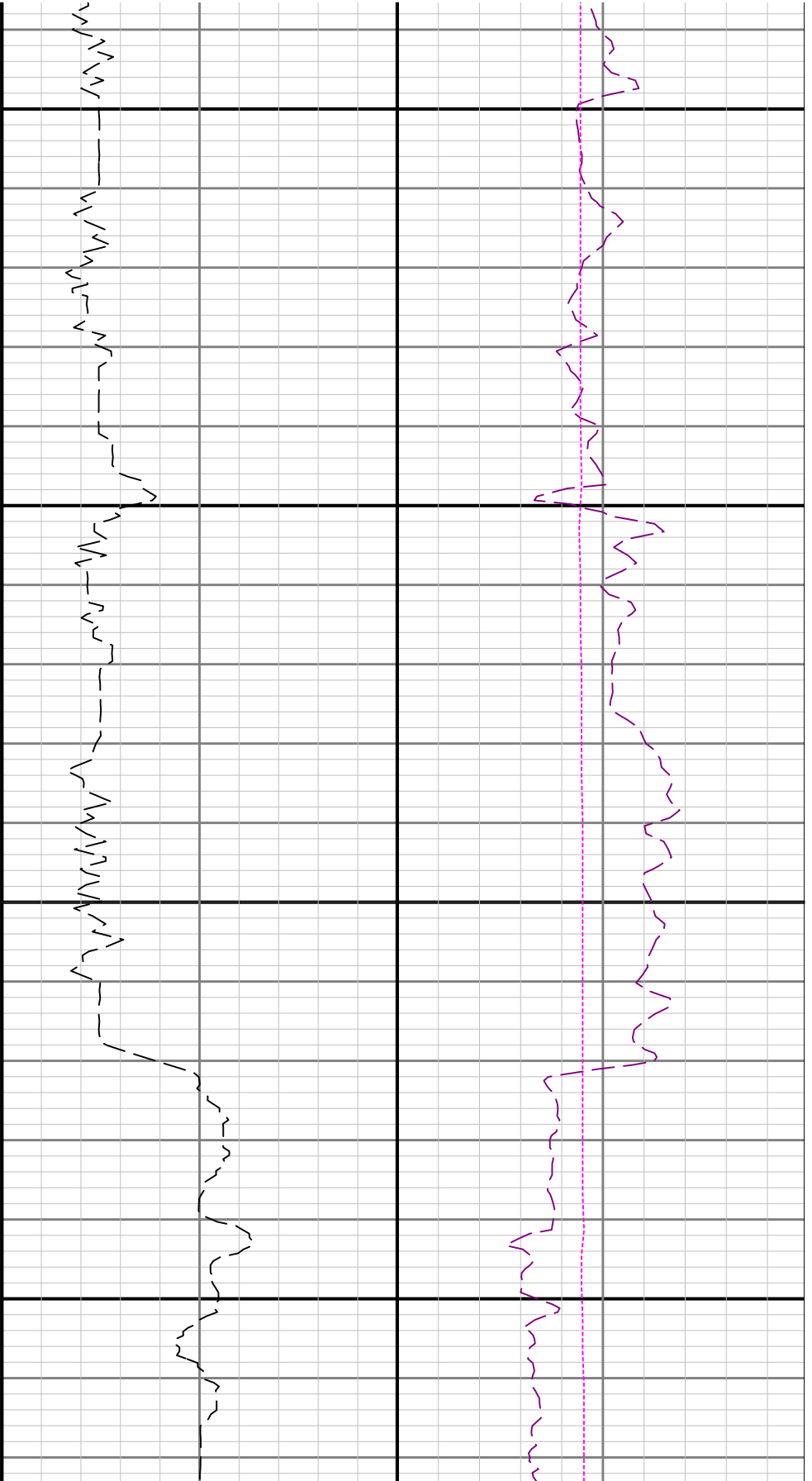




3300

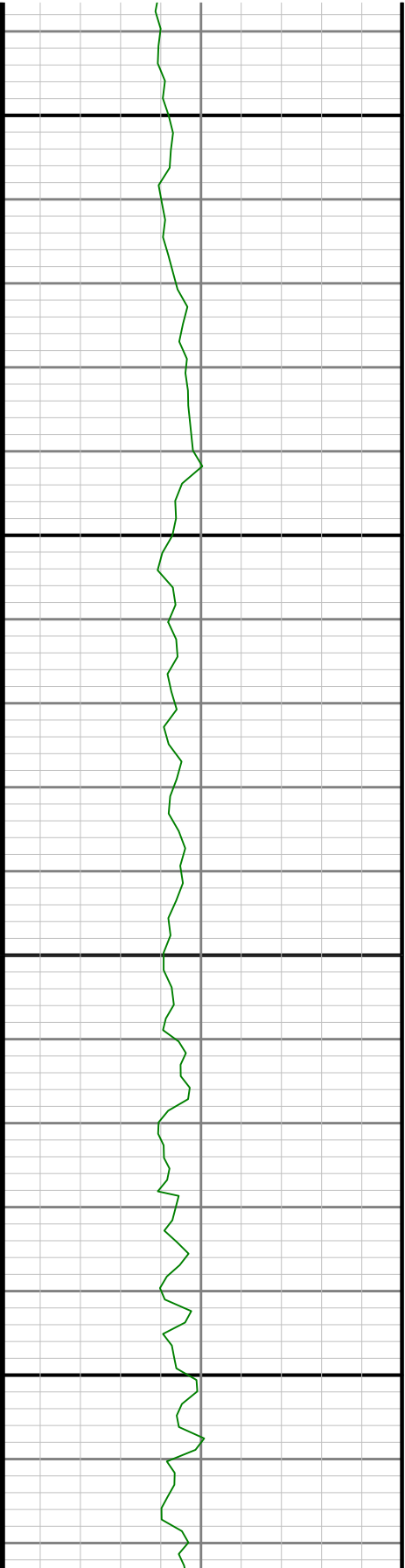
3400

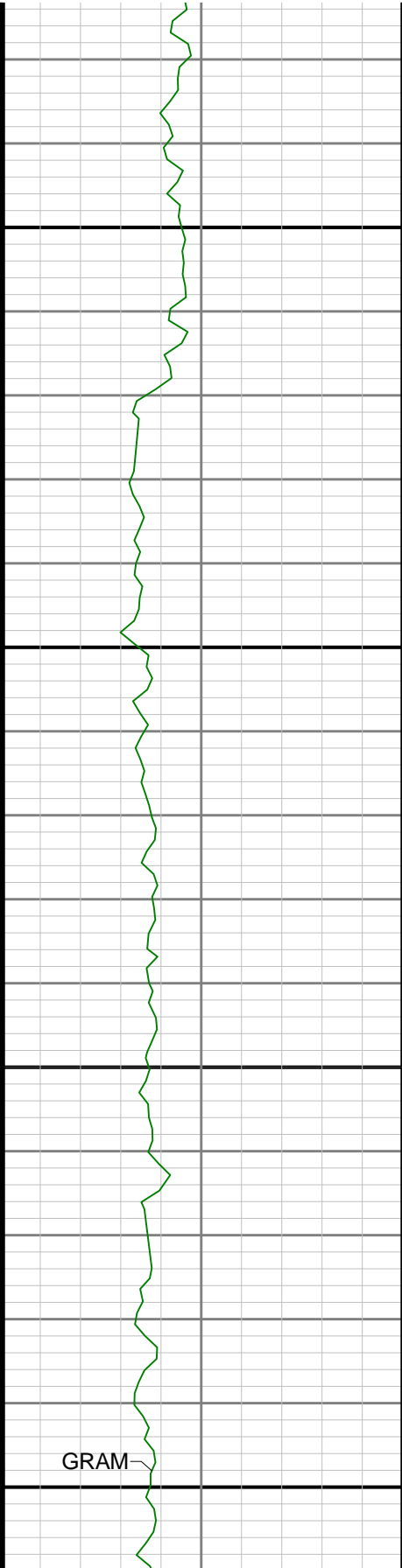




3700

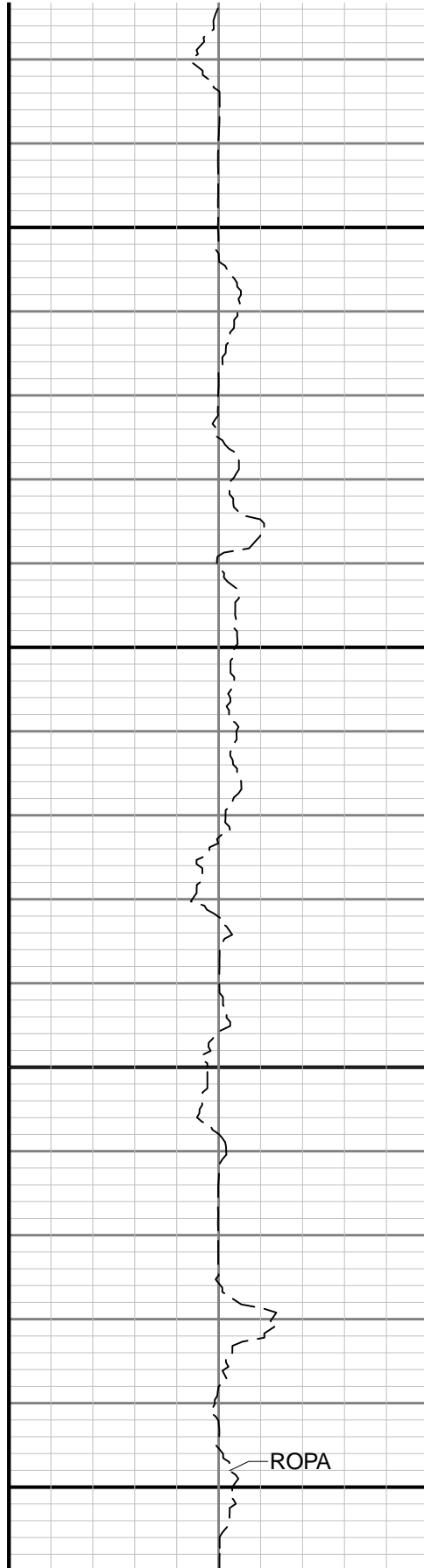
3800



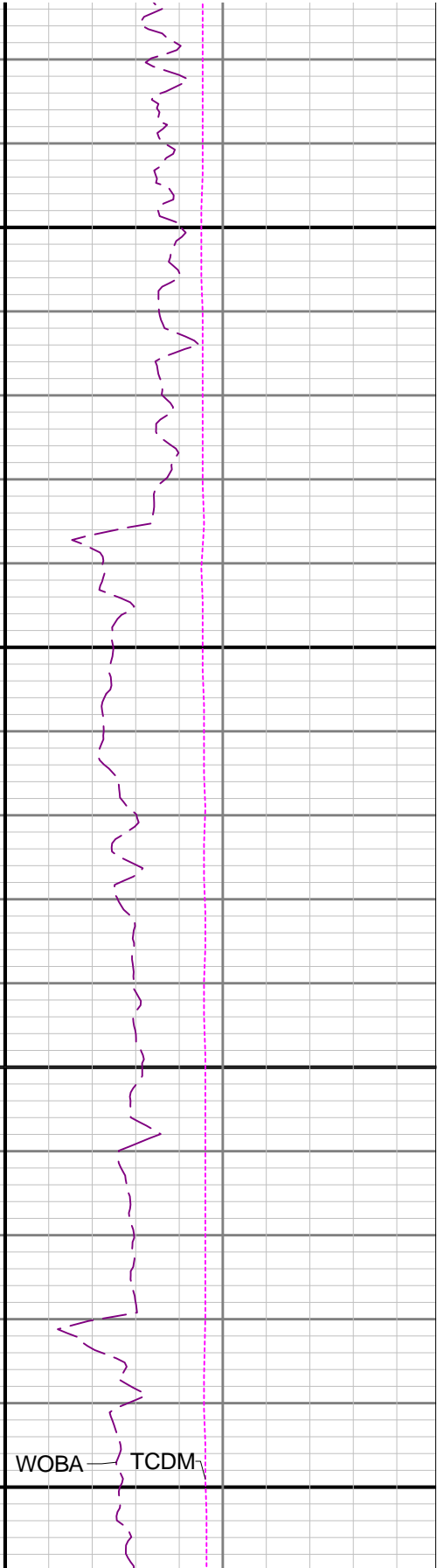


3900

4000

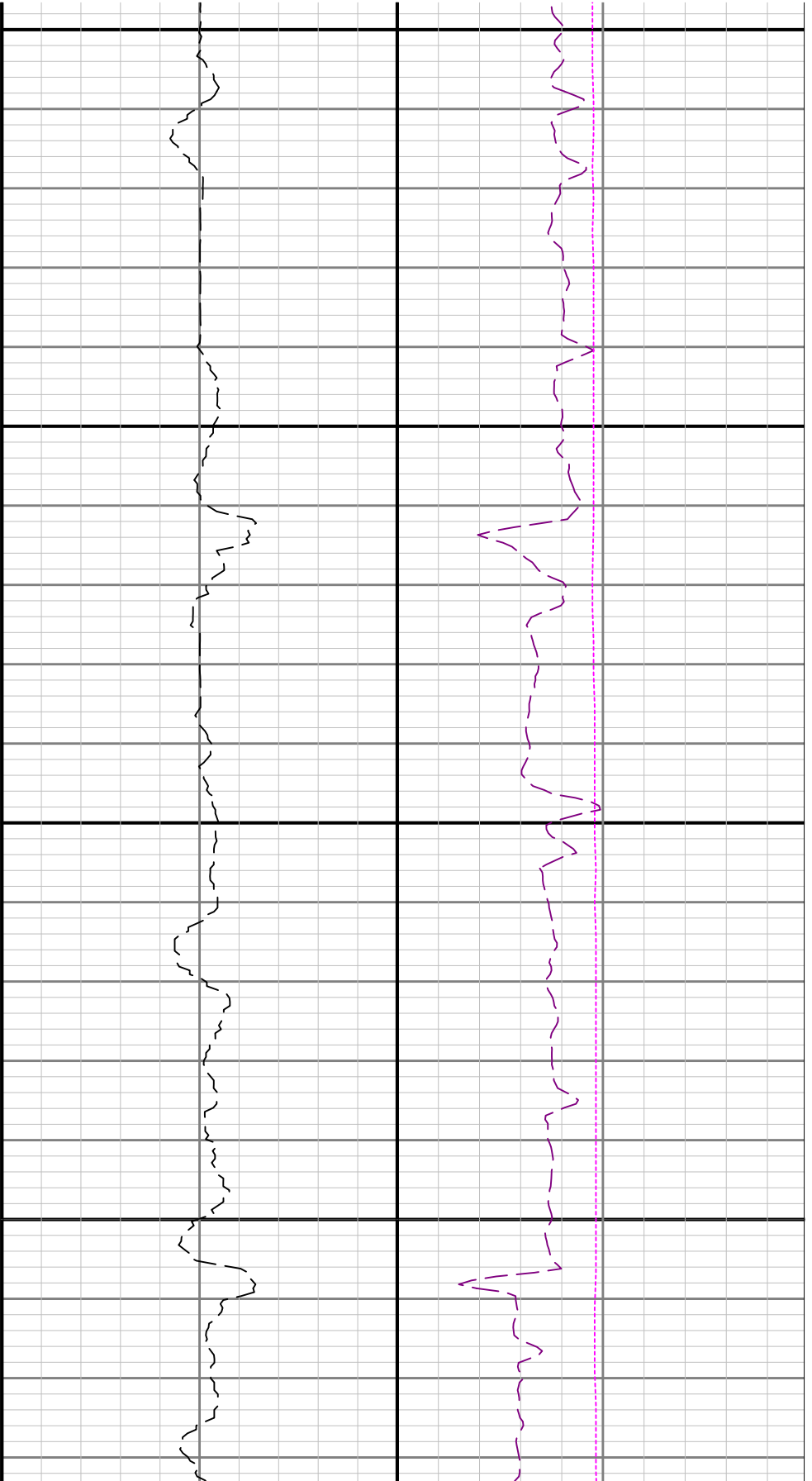


ROPA



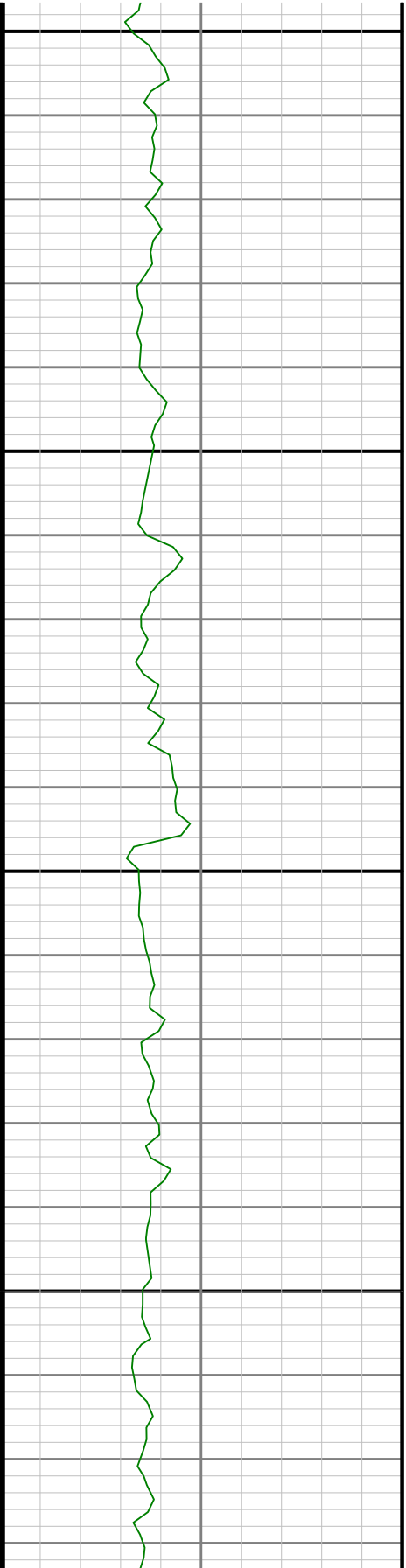
WOBA

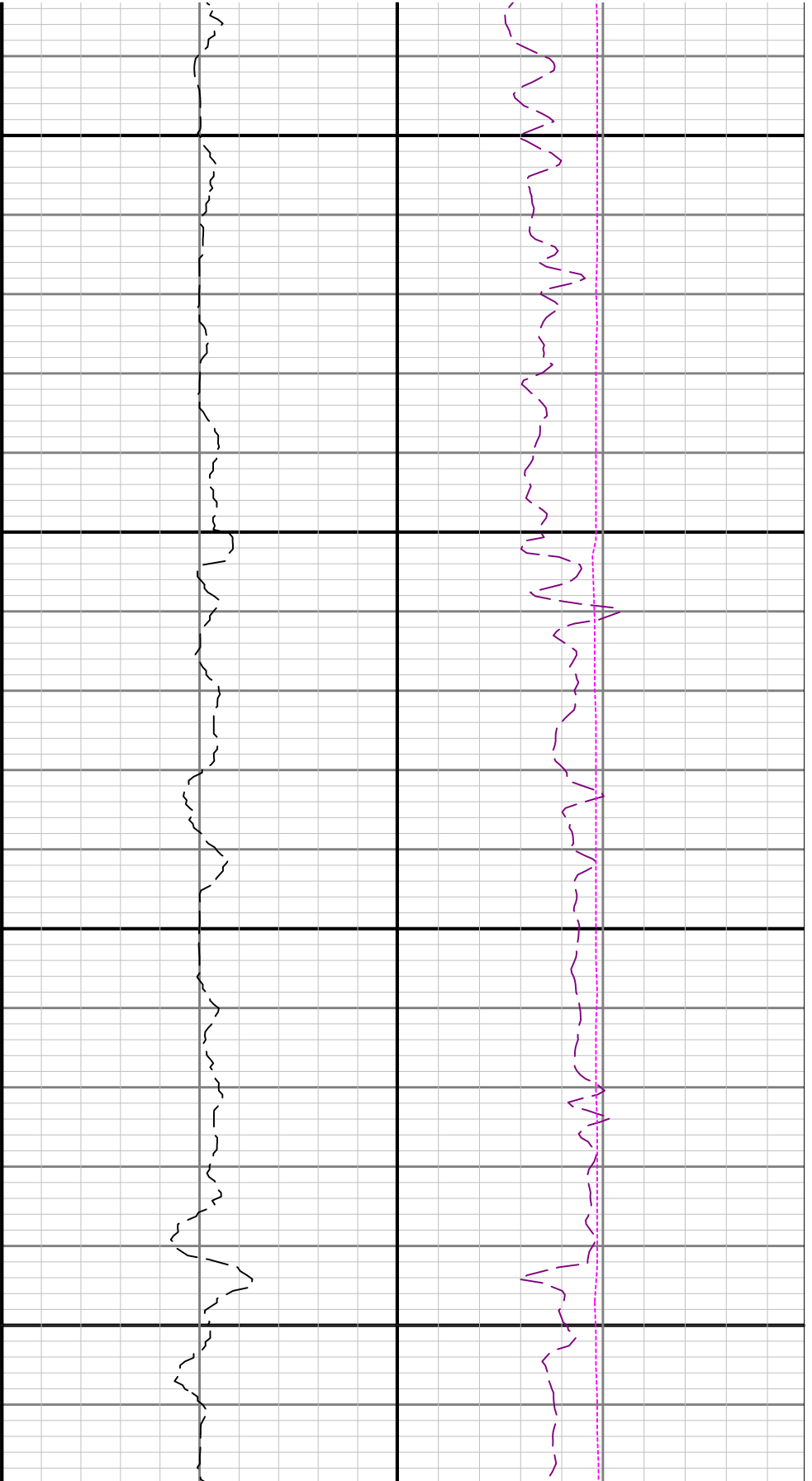
TCDM



4200

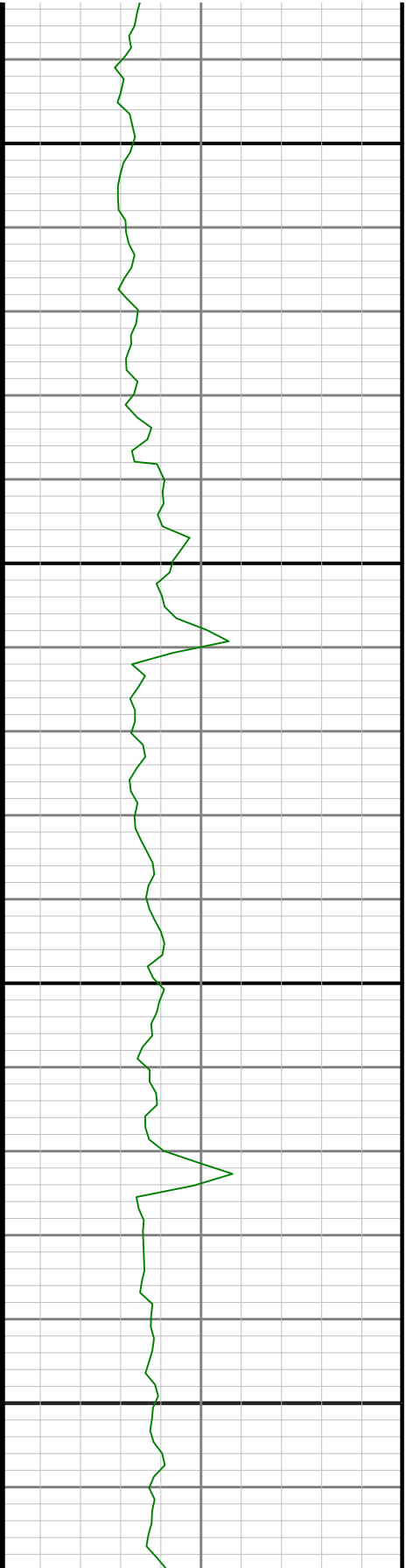
4300

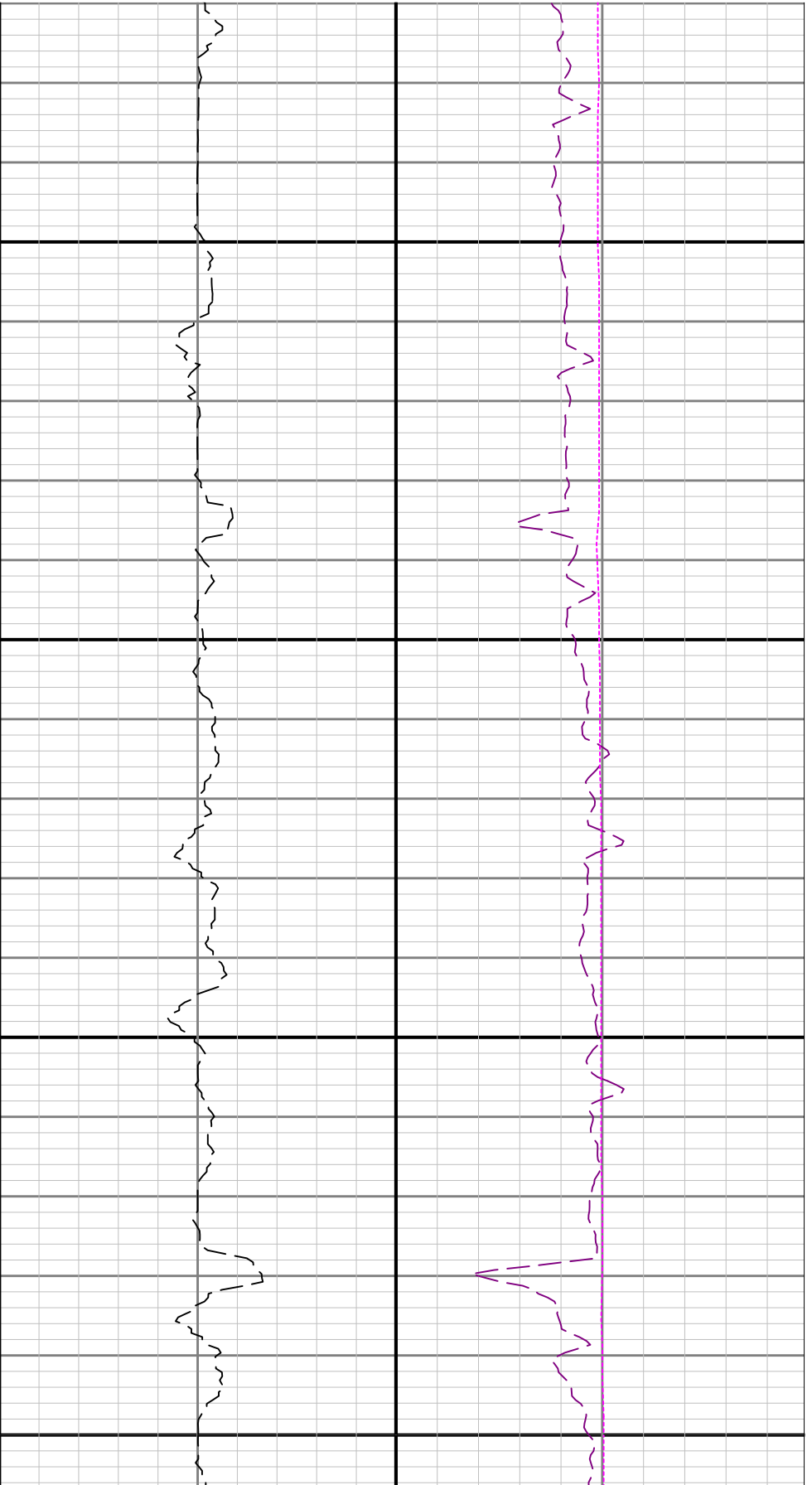




4400

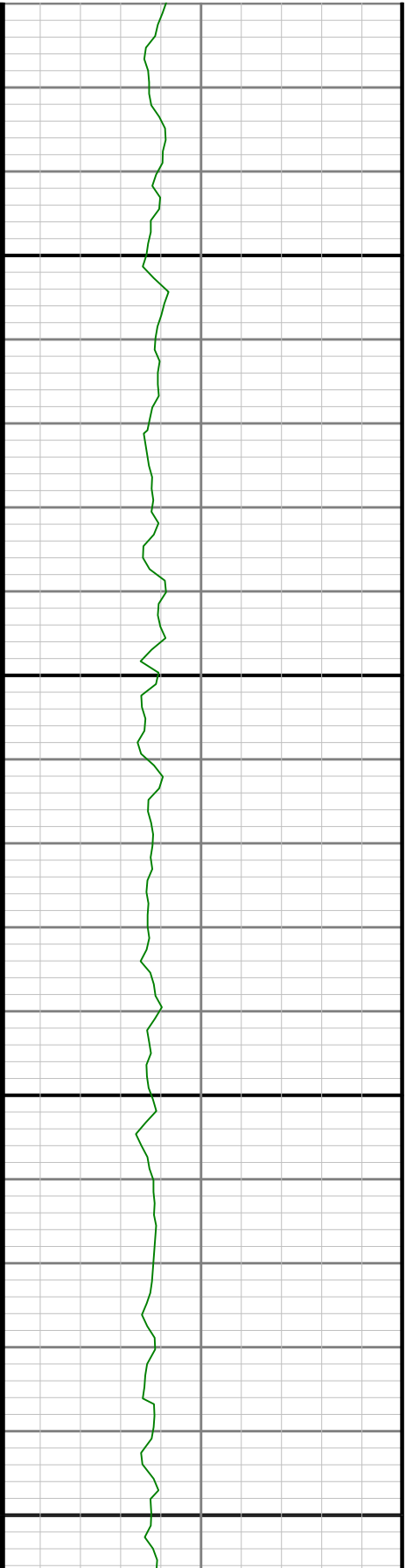
4500

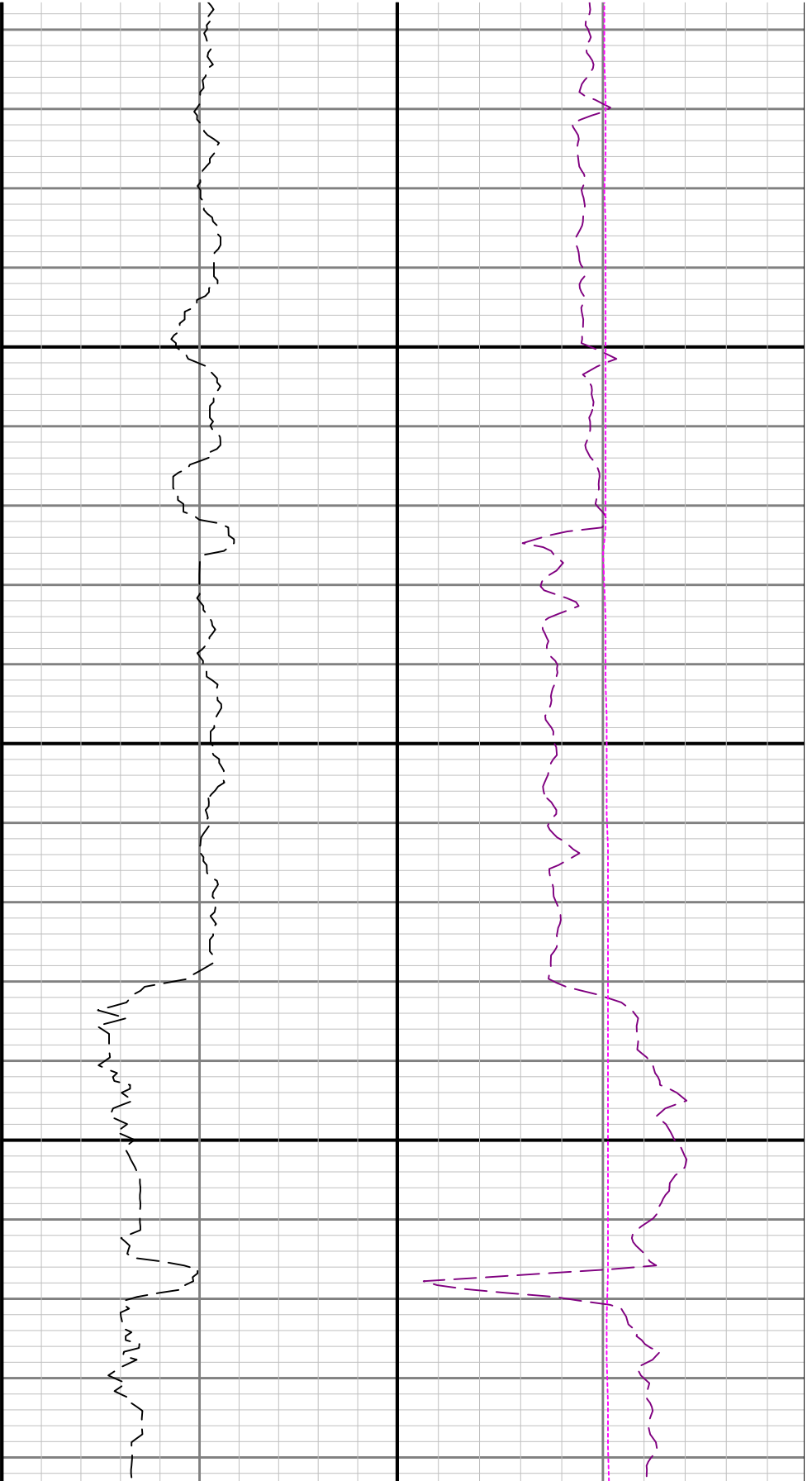




4600

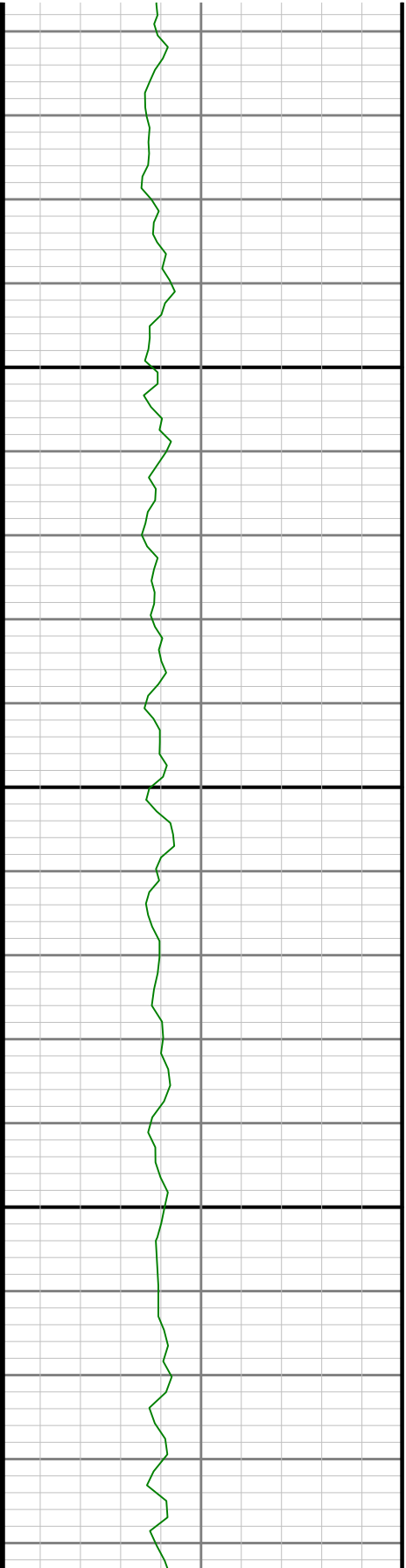
4700

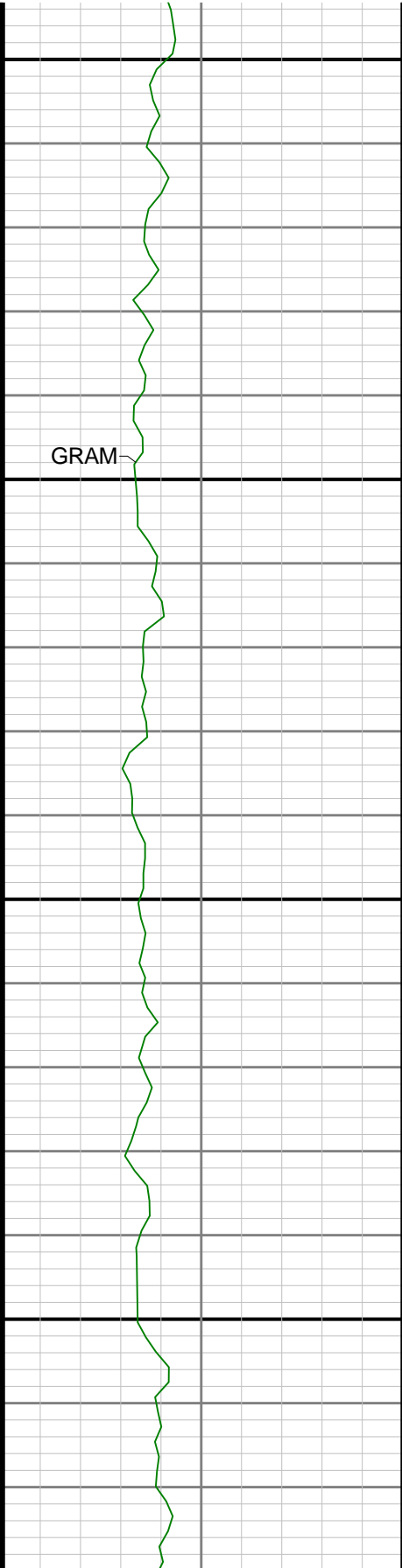




4800

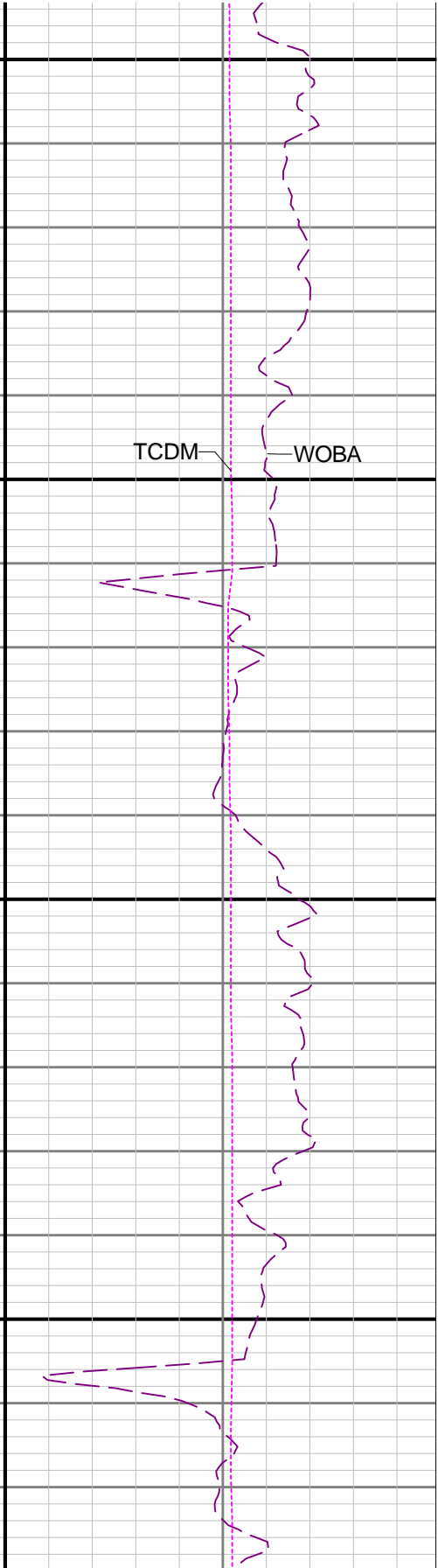
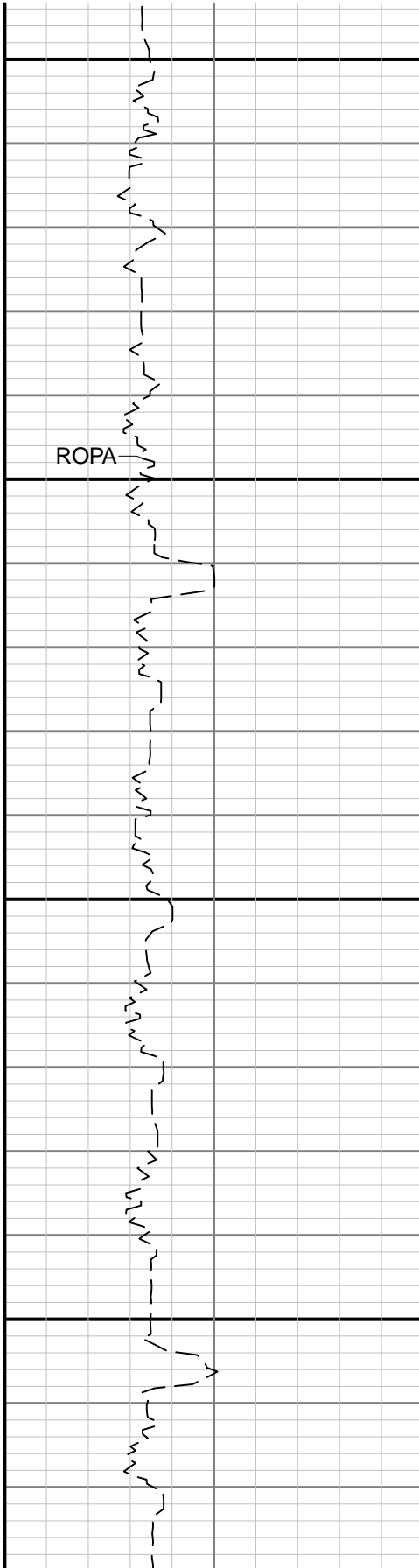
4900

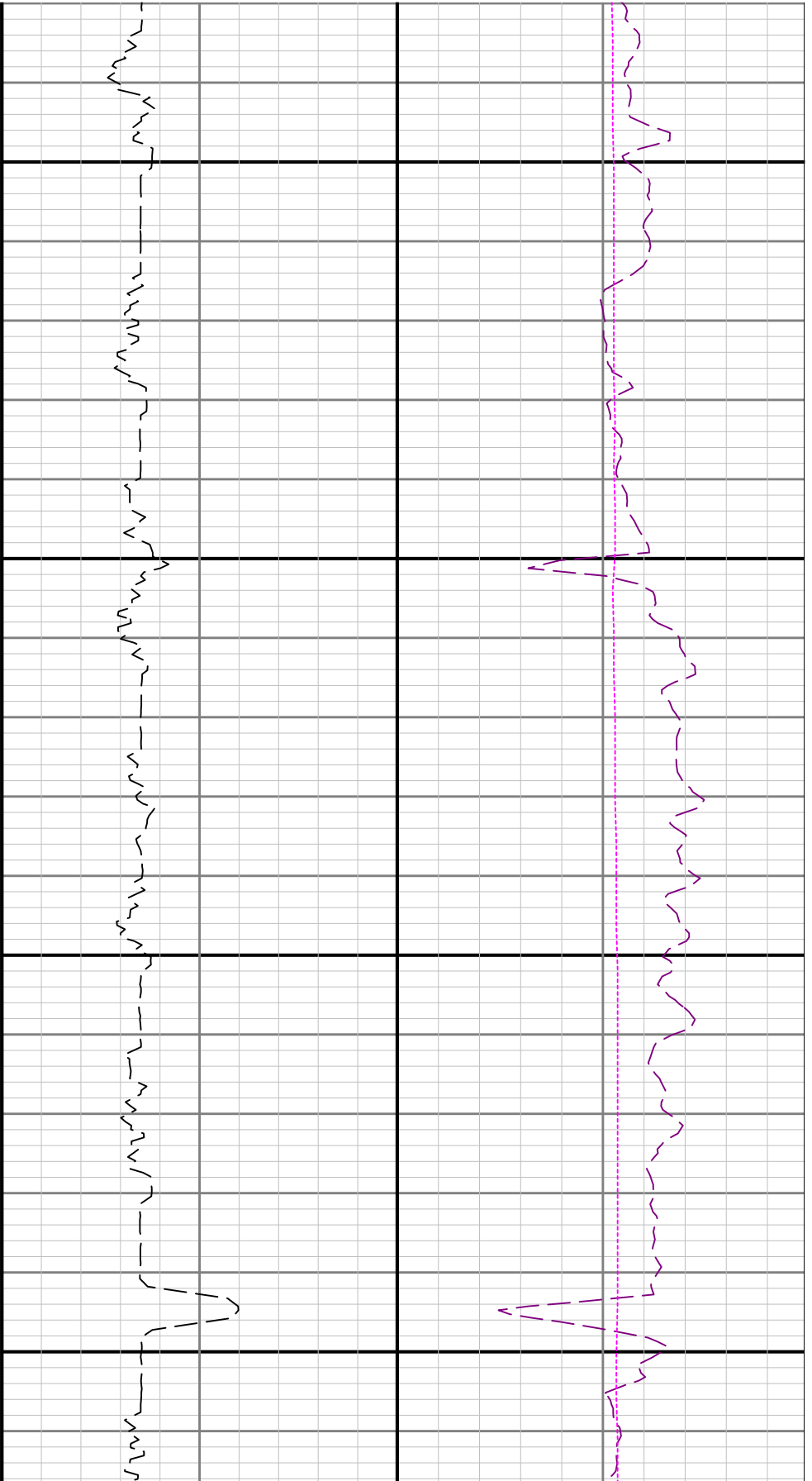




5000

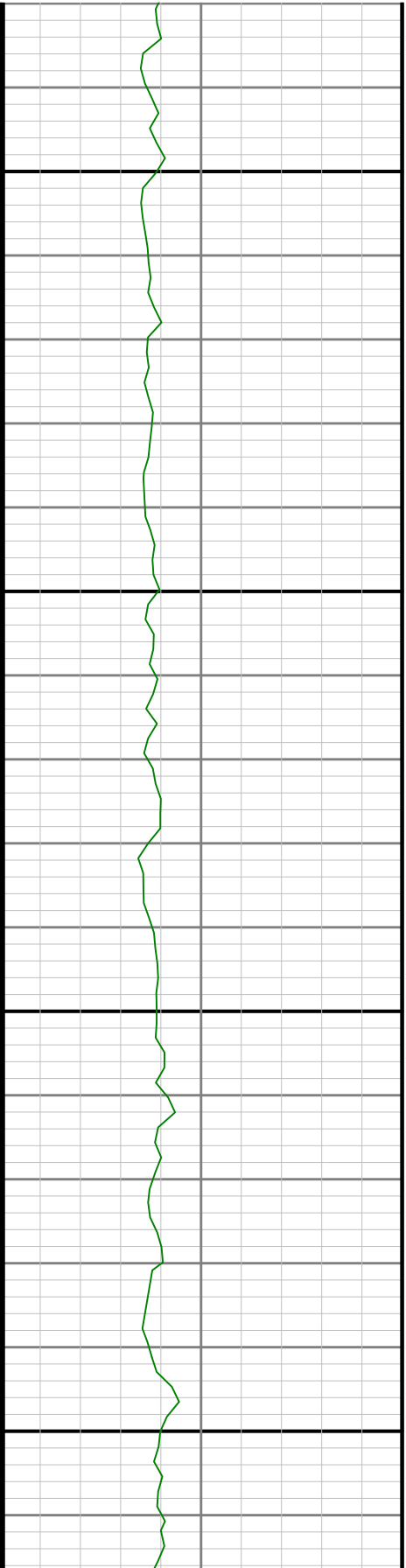
5100

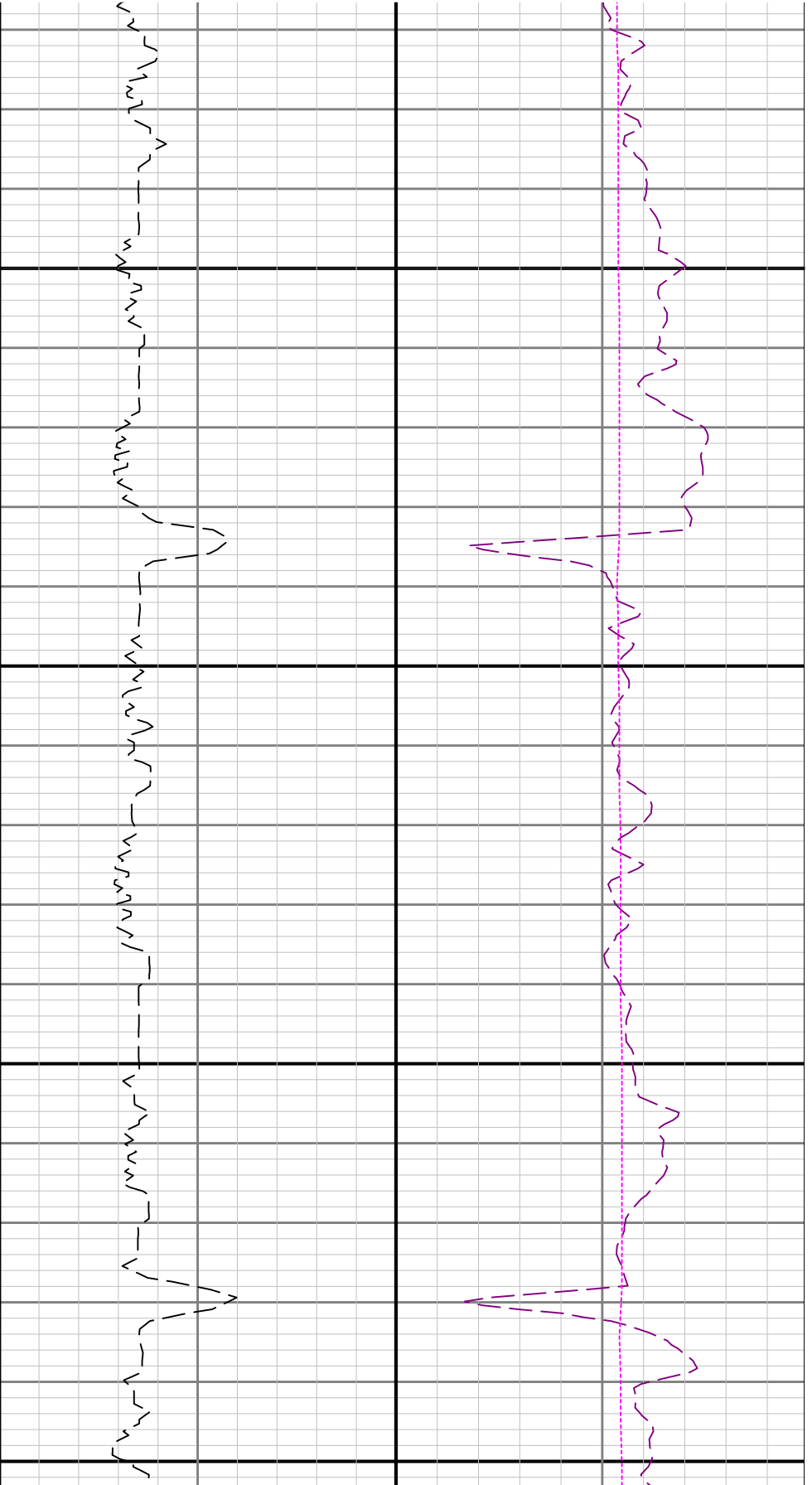




5200

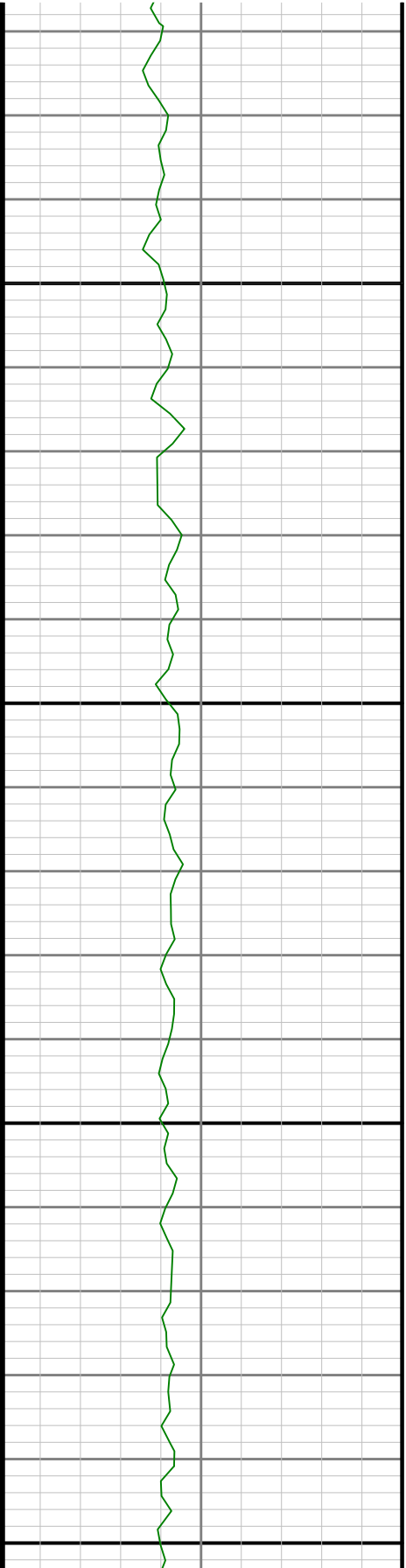
5300

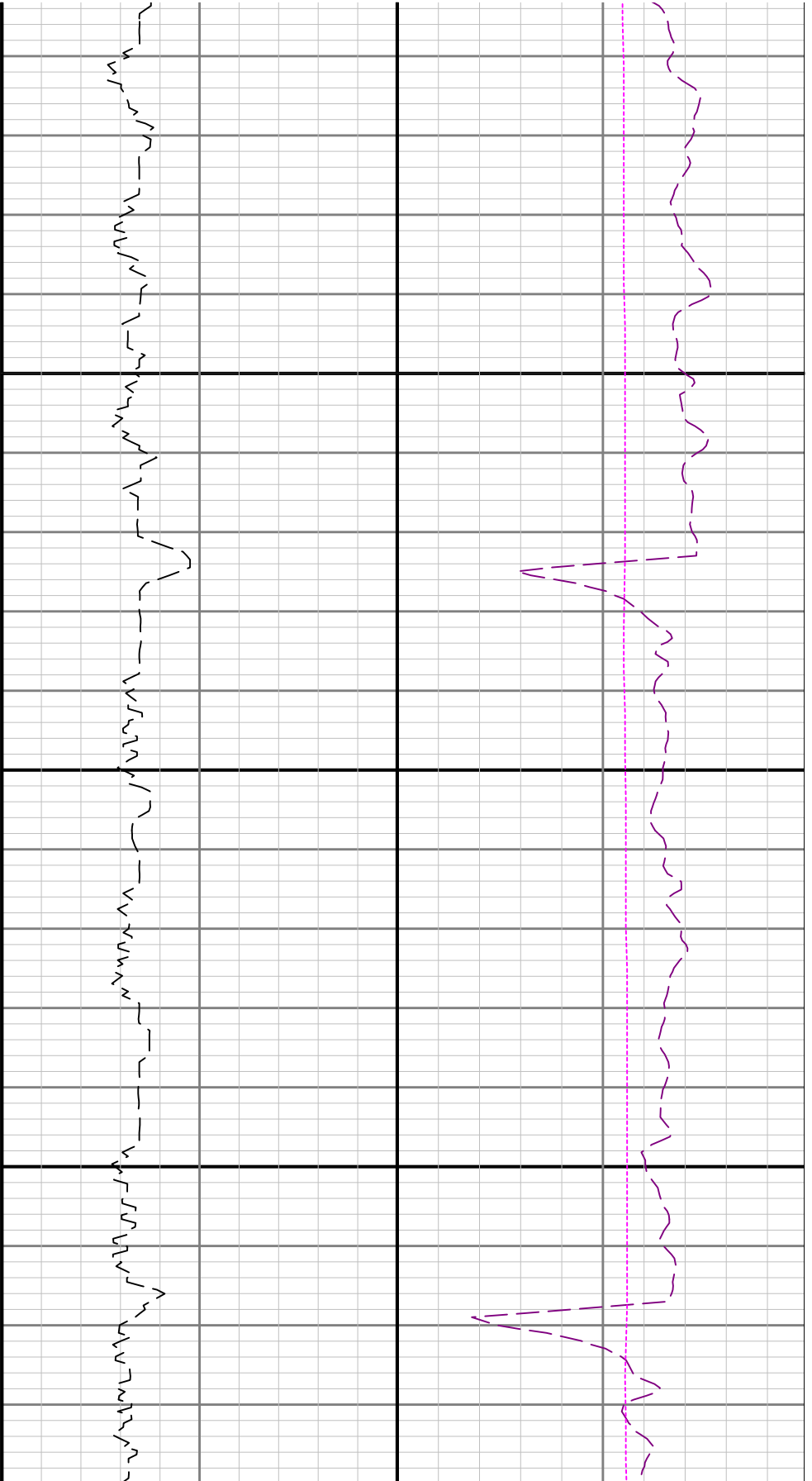




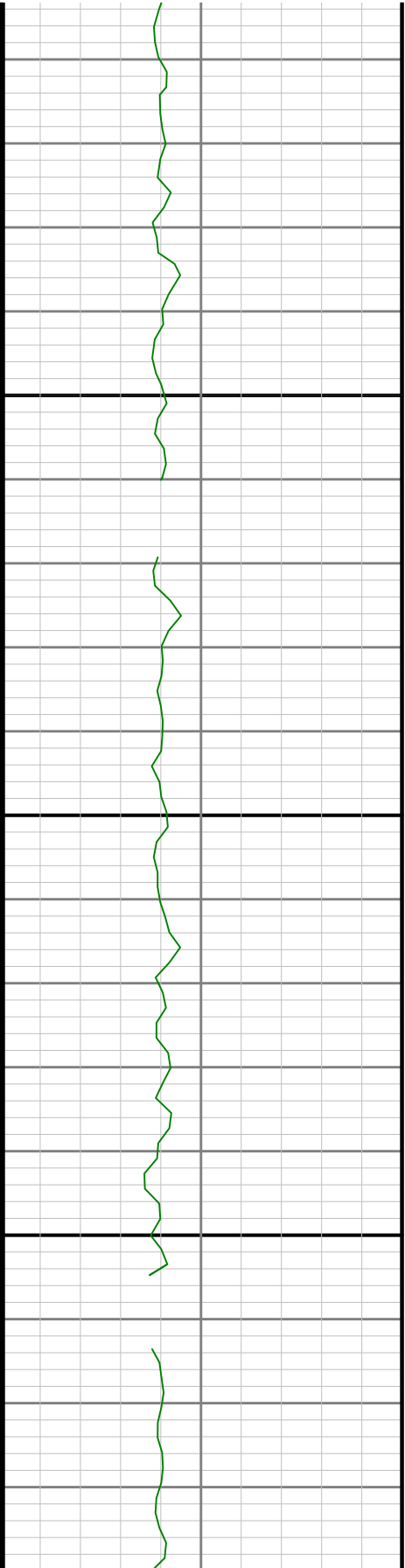
5400

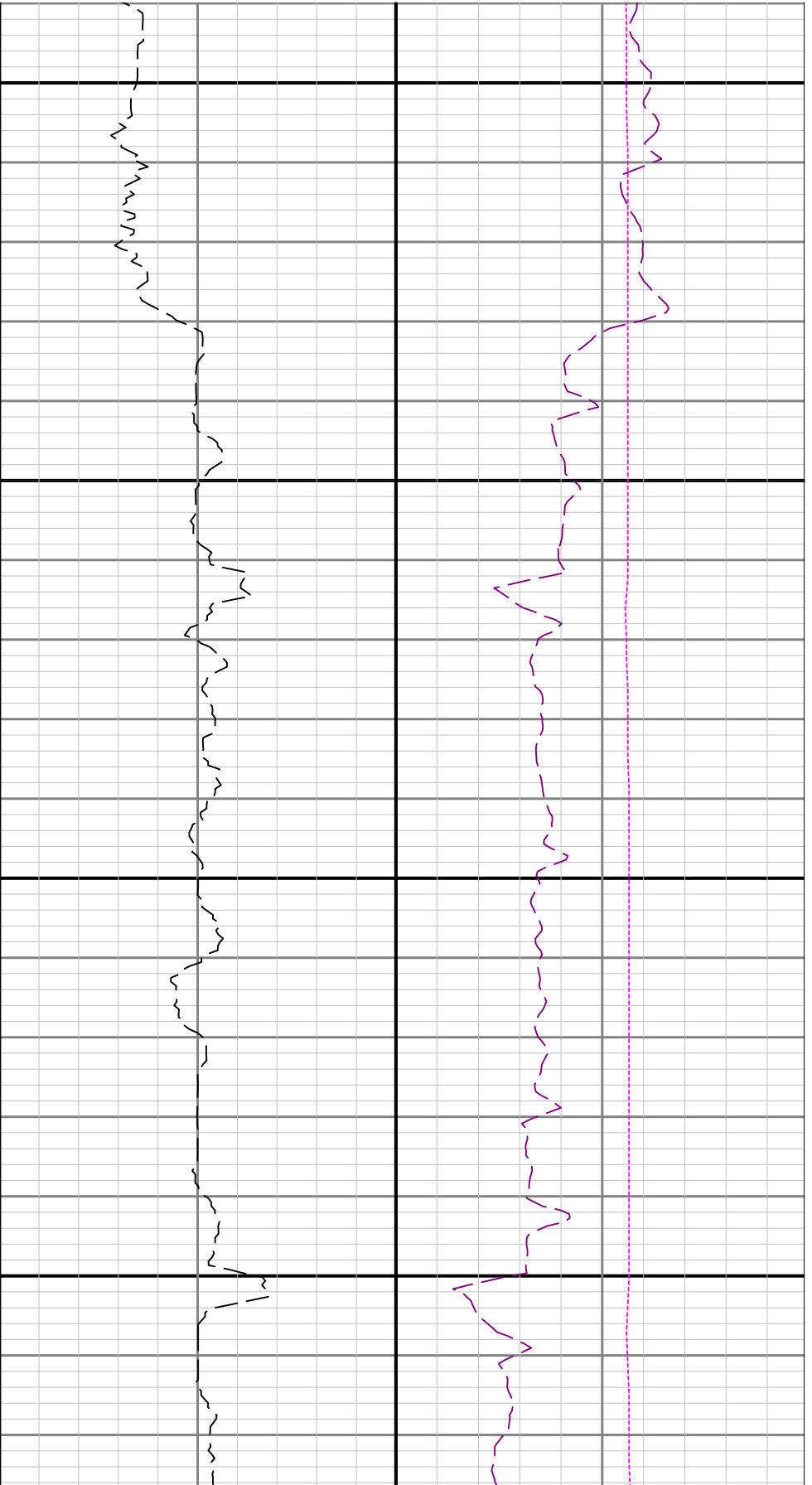
5500





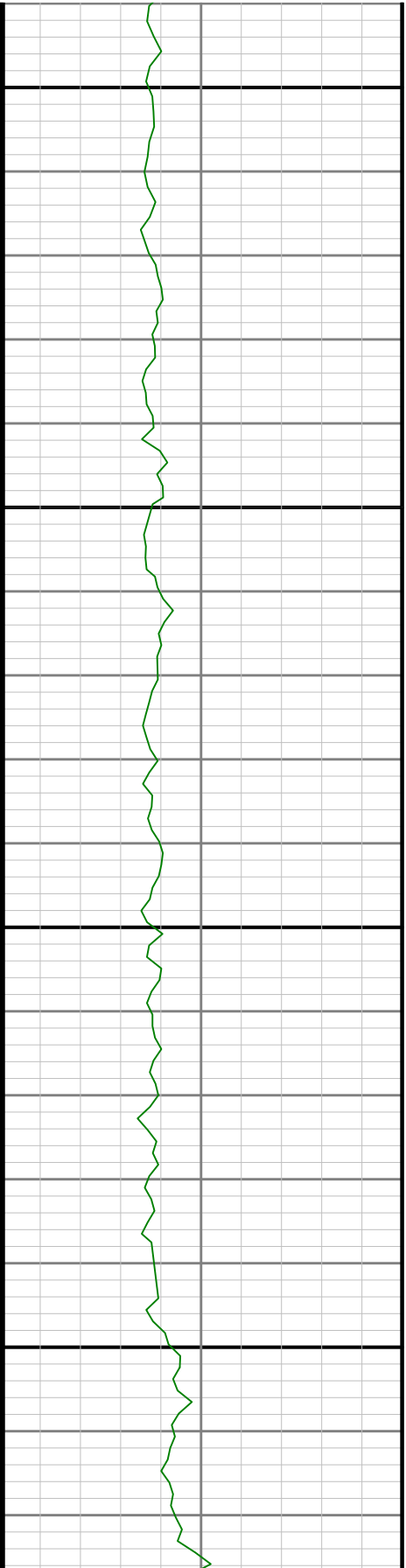
5600

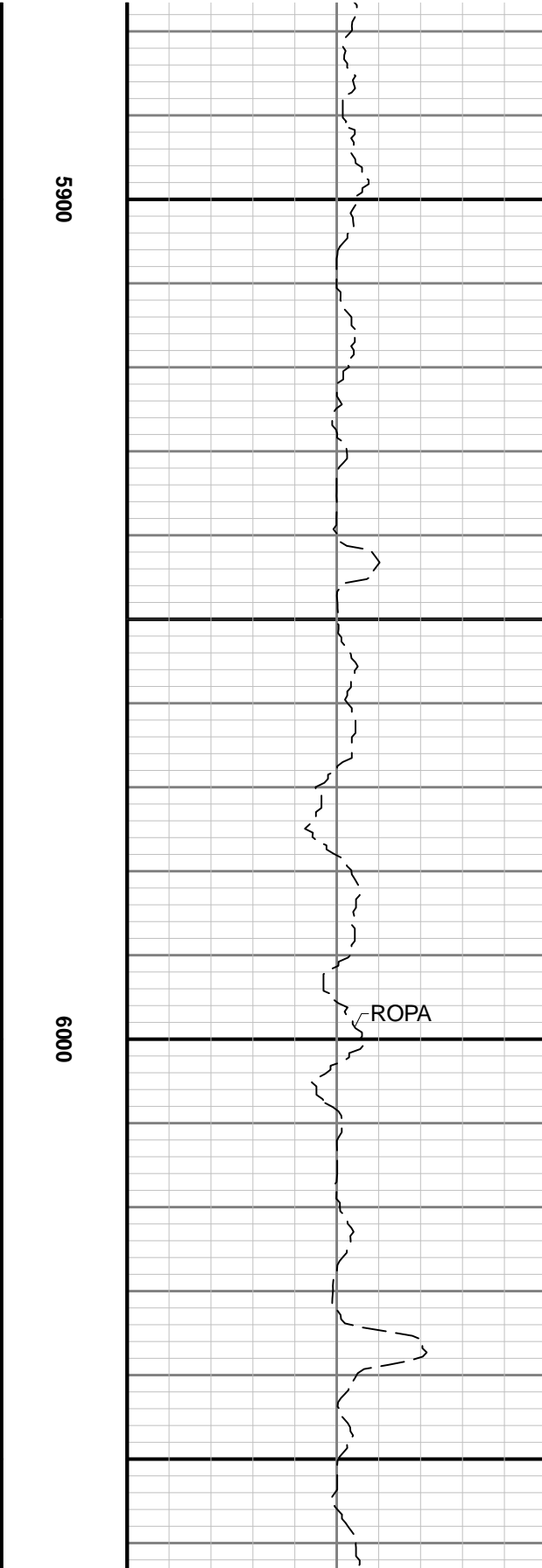
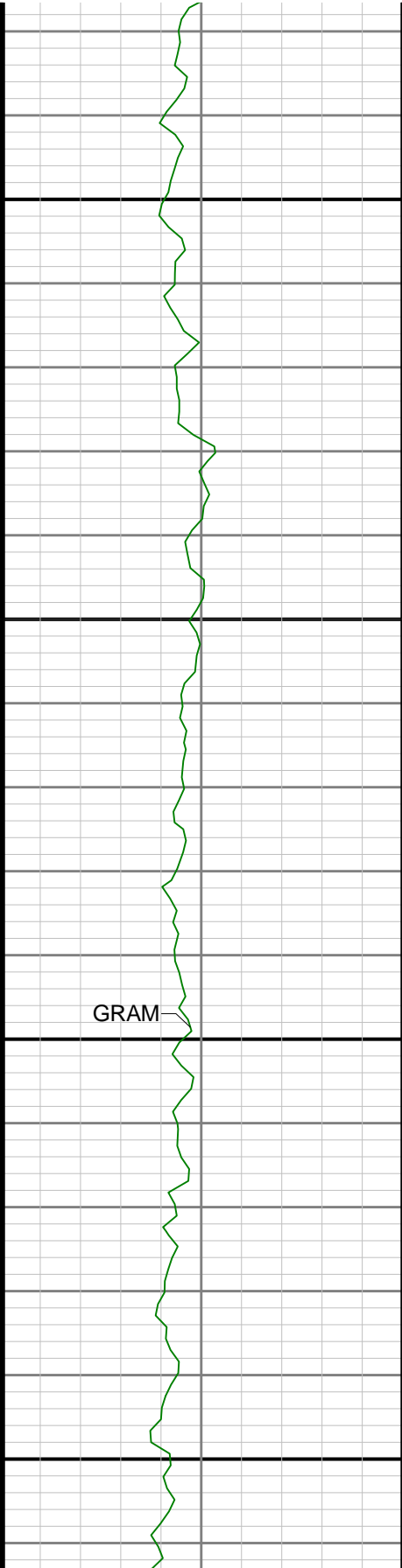




5700

5800

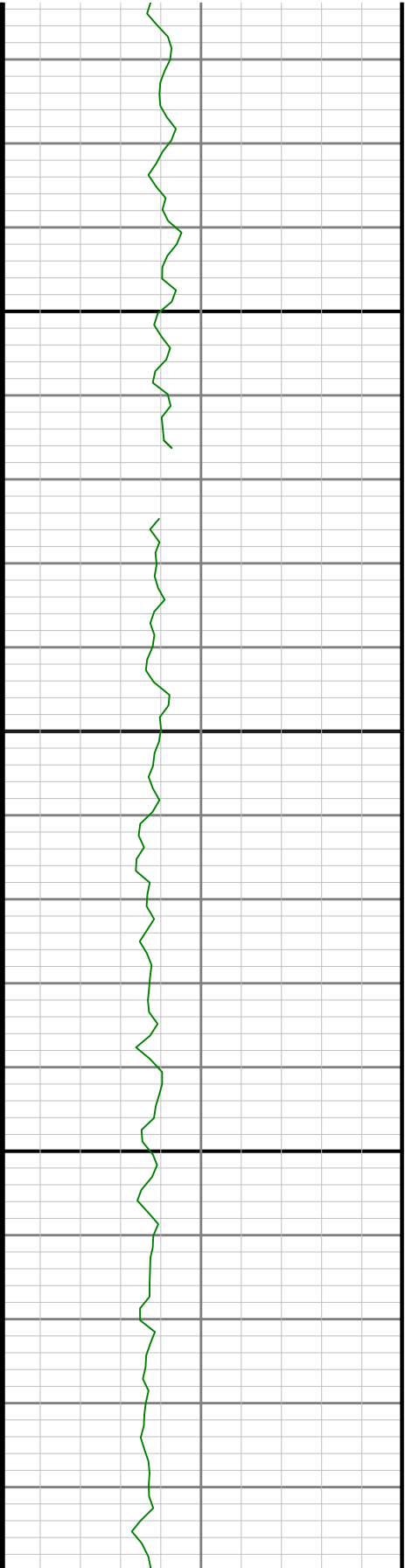


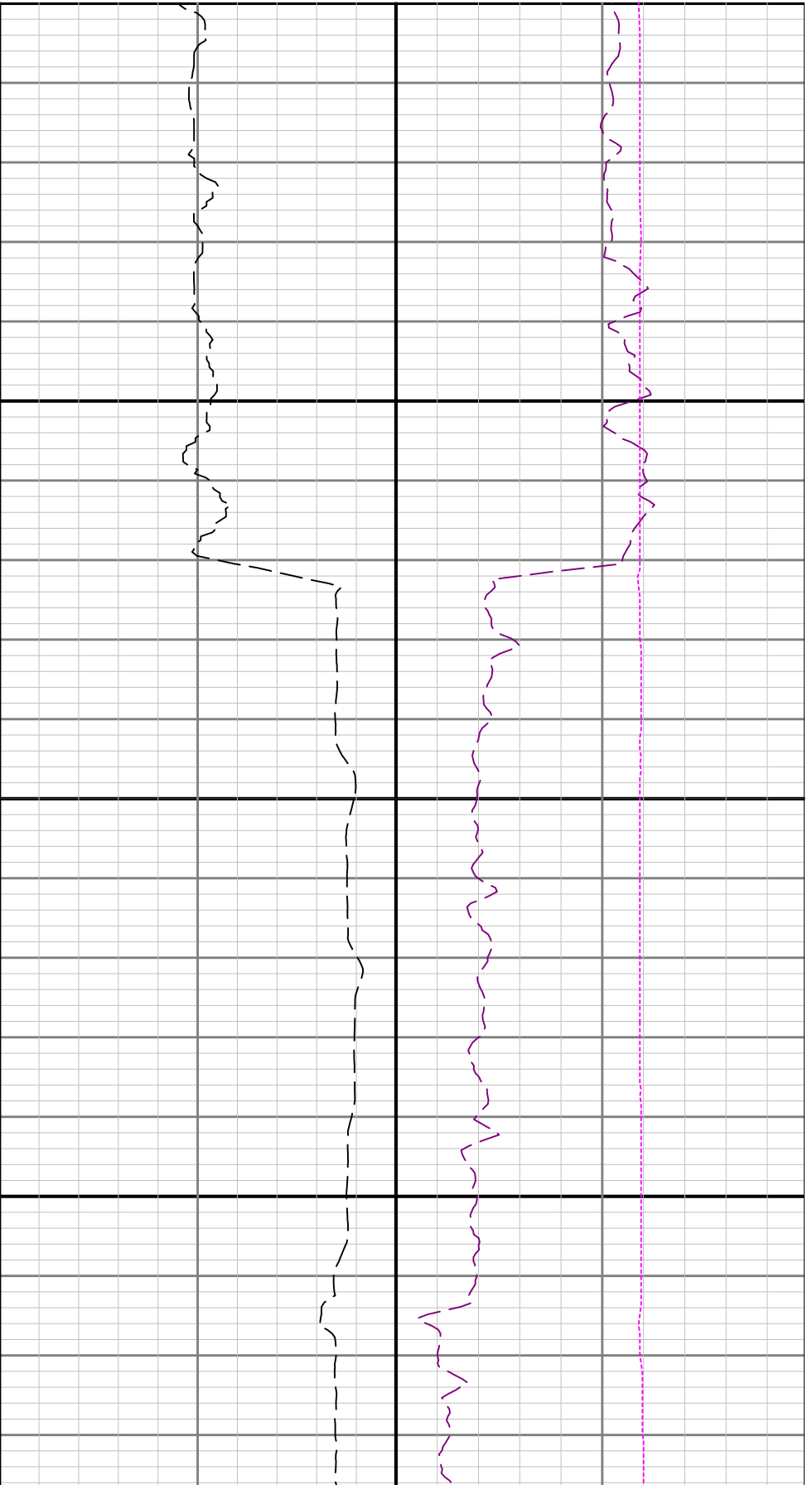




6100

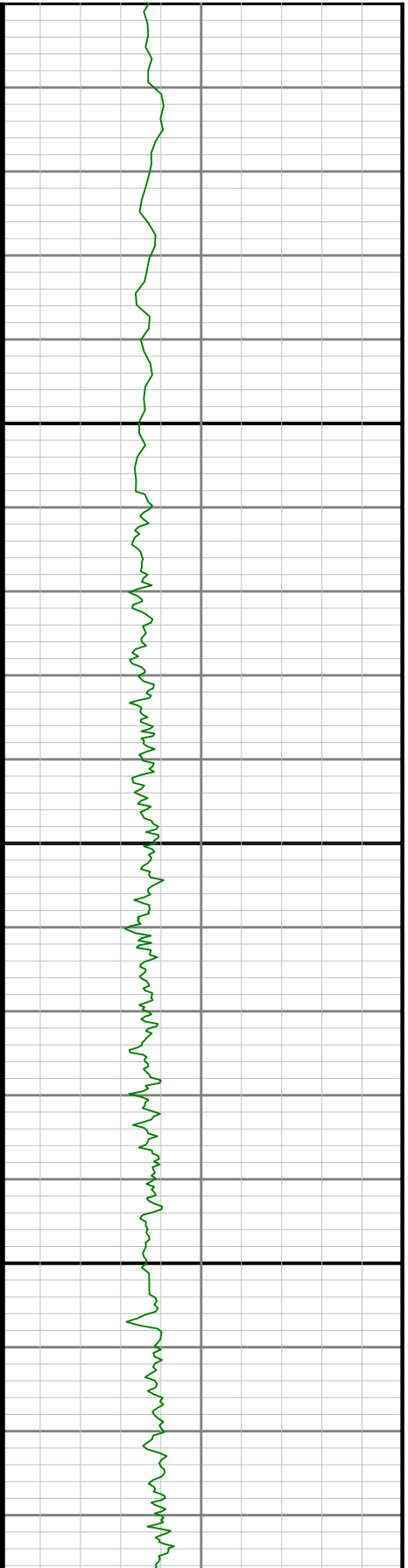
6200

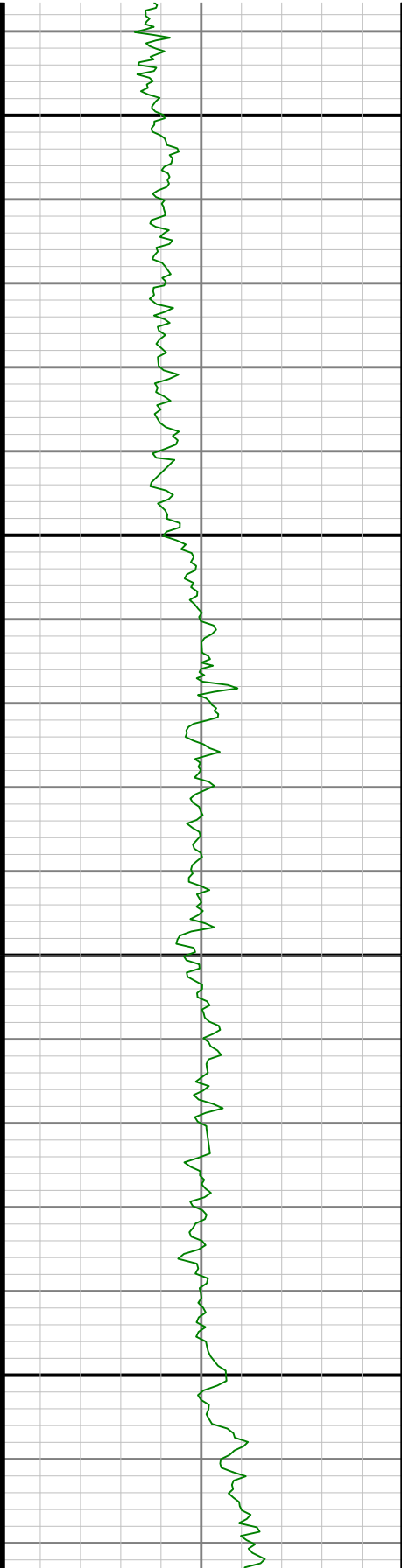




6300

6400

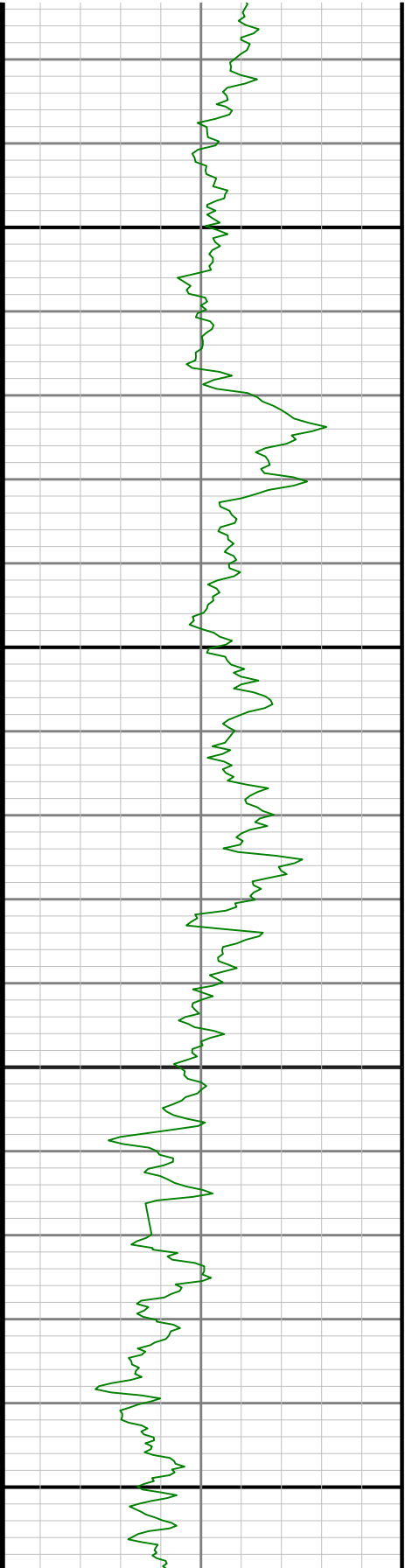




6600

6500

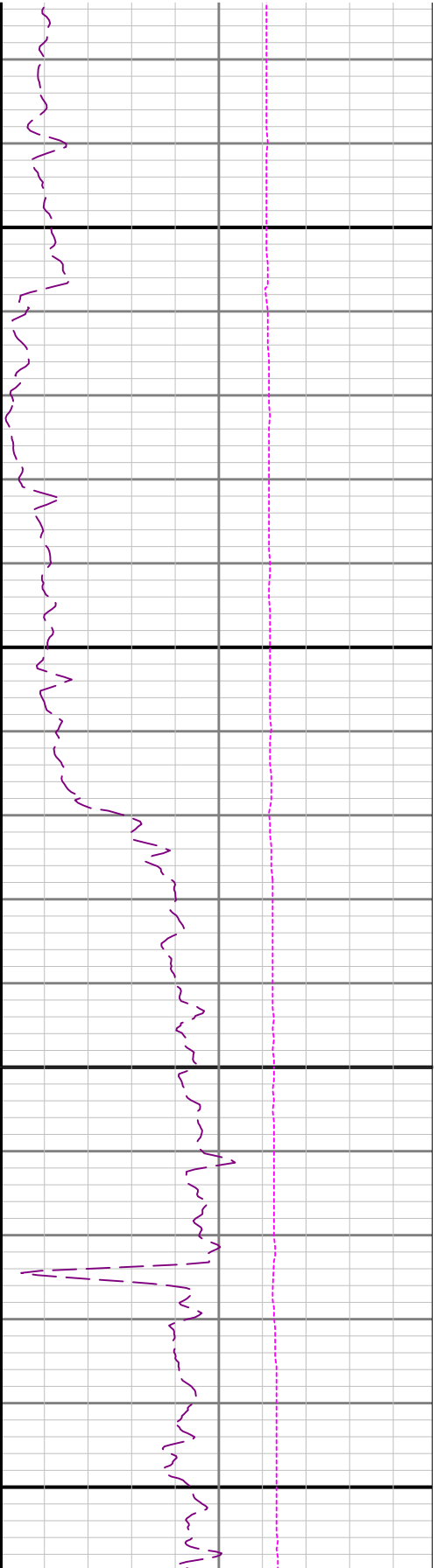
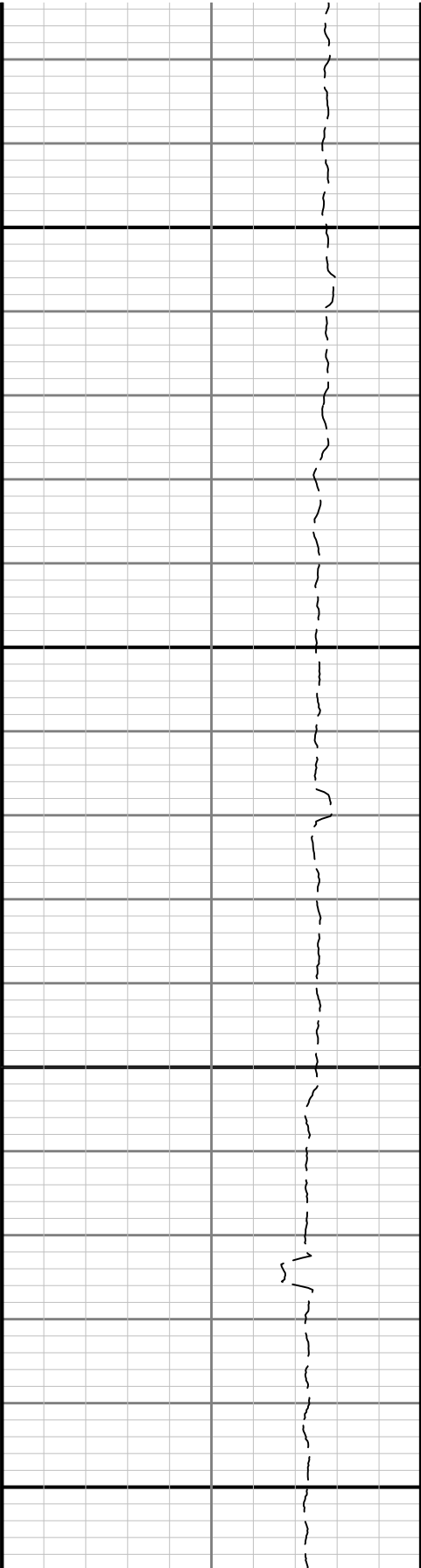


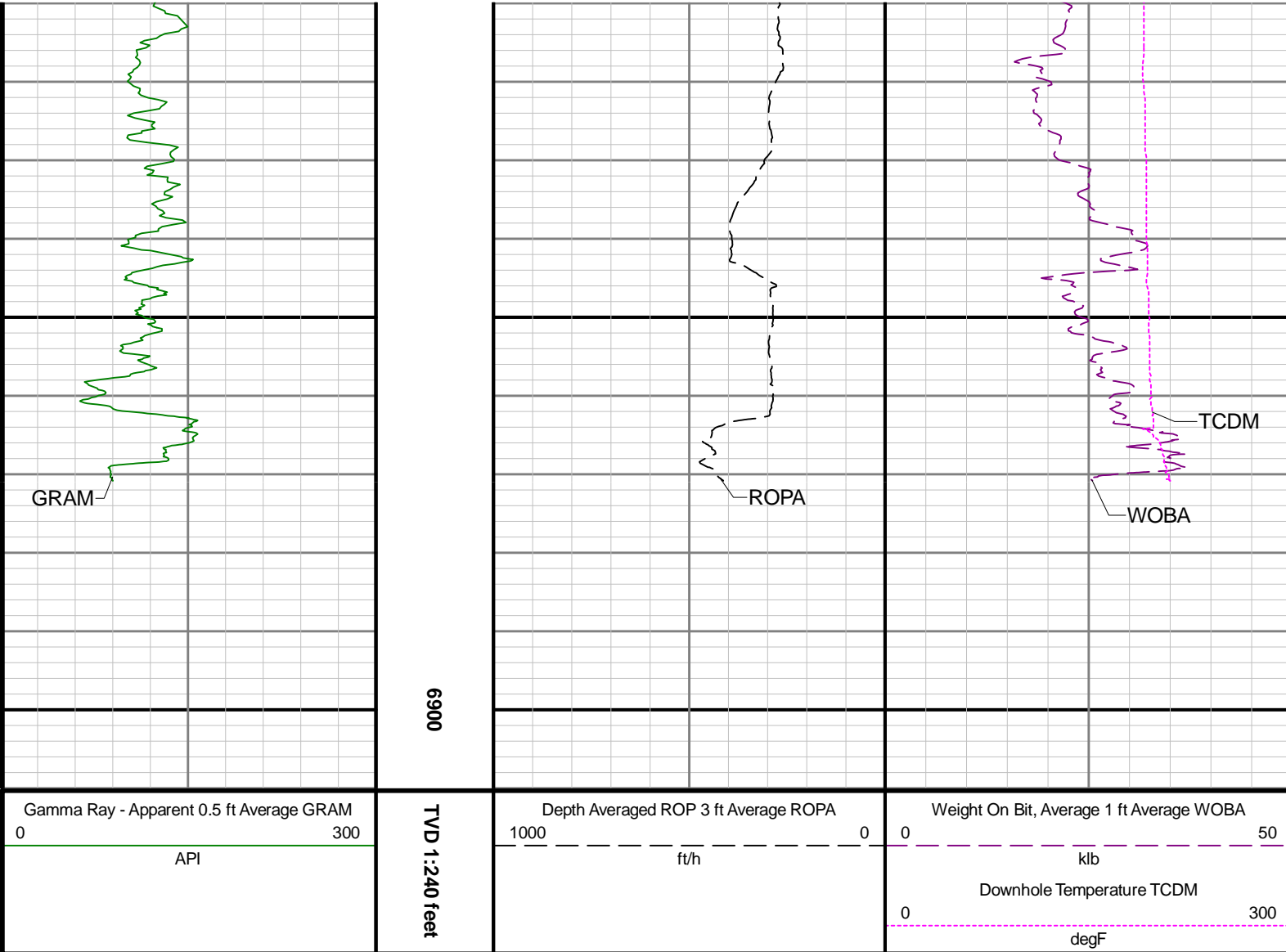


6700

6800

R1<





Directional Survey Summary

Latitude:	40° 12' 23.058" N	Longitude:	104° 32' 29.800" W
North Reference:	Grid	Drill Depth Zero:	Rig Floor
Vertical Datum is:	Mean Sea Level	Vertical Datum to DDZ: (ft)	4854.00
Vertical Section North: (ft)	0.00	Vertical Section East: (ft)	0.00
Vertical Section Azimuth: (deg)	180.00		
Grid Convergence: (deg)	-0.61	Magnetic Declination: (deg)	7.99
Total Correction: (deg)	7.38	TVD Calculation Method:	Minimum Curvature
Magnetic Correction:	Off	Local Magnetic Field: (nT)	51979
Local Magnetic Dip Angle: (deg)	66.63	Local Gravity Field: (m/s2)	9.800

Tie-In / Projection	Measured Depth (ft)	Inclination (deg)	Azimuth (deg)	Temperature (degF)	North (ft)	East (ft)	True Vertical Depth (ft)	TVD Subsea (ft)	Vertical Section (ft)	Course Length (ft)	Dog Leg Severity (deg/100ft)	Build Rate (deg/100ft)	Turn Rate (deg/100ft)
Tie-In	0.00	0.00	0.00	N/A	0.00	0.00	0.00	-4854.00	0.00	0.00	0.00	0.00	0.00
	81.00	0.38	146.20	N/A	-0.22	0.15	81.00	-4773.00	0.22	81.00	0.47	0.47	180.49
	175.00	0.30	138.43	N/A	-0.67	0.49	175.00	-4679.00	0.67	94.00	0.10	-0.09	-8.27
	267.00	0.30	261.70	N/A	-0.88	0.41	267.00	-4587.00	0.88	92.00	0.57	0.00	133.99
	361.00	0.22	56.53	N/A	-0.82	0.31	361.00	-4493.00	0.82	94.00	0.54	-0.09	164.71
	456.00	0.48	312.46	N/A	-0.45	0.17	456.00	-4398.00	0.45	95.00	0.60	0.27	-109.55
	550.00	0.08	23.52	N/A	-0.12	-0.09	549.99	-4304.01	0.12	94.00	0.49	-0.43	75.60

	645.00	0.06	213.43	N/A	-0.10	-0.09	644.99	-4209.01	0.10	95.00	0.15	-0.02	-179.04
	739.00	0.10	53.06	N/A	-0.09	-0.05	738.99	-4115.01	0.09	94.00	0.17	0.04	-170.61
	834.00	0.15	156.12	N/A	-0.16	0.06	833.99	-4020.01	0.16	95.00	0.21	0.05	108.48
	928.00	0.34	212.84	N/A	-0.51	-0.04	927.99	-3926.01	0.51	94.00	0.30	0.20	60.34
	1023.00	0.19	201.23	N/A	-0.89	-0.25	1022.99	-3831.01	0.89	95.00	0.17	-0.16	-12.22
	1117.00	0.20	146.44	N/A	-1.17	-0.21	1116.99	-3737.01	1.17	94.00	0.19	0.01	-58.29
	1212.00	0.35	215.90	N/A	-1.54	-0.29	1211.99	-3642.01	1.54	95.00	0.35	0.16	73.12
	1306.00	0.73	196.76	N/A	-2.35	-0.63	1305.99	-3548.01	2.35	94.00	0.44	0.40	-20.36
	1401.00	0.66	200.35	N/A	-3.44	-1.00	1400.98	-3453.02	3.44	95.00	0.09	-0.07	3.78
	1495.00	0.62	206.87	N/A	-4.40	-1.42	1494.97	-3359.03	4.40	94.00	0.09	-0.04	6.94
	1590.00	0.45	218.41	N/A	-5.15	-1.88	1589.97	-3264.03	5.15	95.00	0.21	-0.18	12.15
	1684.00	0.45	247.40	N/A	-5.59	-2.45	1683.97	-3170.03	5.59	94.00	0.24	0.00	30.84
	1779.00	0.53	320.69	N/A	-5.39	-3.07	1778.96	-3075.04	5.39	95.00	0.62	0.08	77.15
	1873.00	0.28	273.91	N/A	-5.04	-3.58	1872.96	-2981.04	5.04	94.00	0.42	-0.27	-49.77
Ti-In	1948.00	0.46	184.85	N/A	-5.32	-3.79	1947.96	-2906.04	5.32	75.00	0.71	0.24	-118.75
	1993.00	0.91	184.95	101.4	-5.86	-3.83	1992.96	-2861.04	5.86	45.00	1.00	1.00	0.22
	2087.00	0.10	327.98	104.1	-6.53	-3.94	2086.95	-2767.05	6.53	94.00	1.06	-0.86	152.16
	2181.00	0.10	46.42	109.5	-6.41	-3.92	2180.95	-2673.05	6.41	94.00	0.13	0.00	83.45
	2276.00	2.96	187.41	109.5	-8.78	-4.18	2275.91	-2578.09	8.78	95.00	3.20	3.01	148.41
	2370.00	5.90	187.12	112.2	-15.99	-5.09	2369.62	-2484.38	15.99	94.00	3.13	3.13	-0.31
	2465.00	6.84	187.28	114.9	-26.44	-6.41	2464.03	-2389.97	26.44	95.00	0.99	0.99	0.17
	2559.00	6.75	186.90	117.6	-37.48	-7.79	2557.37	-2296.63	37.48	94.00	0.11	-0.10	-0.40
	2653.00	7.55	187.34	120.3	-49.09	-9.24	2650.64	-2203.36	49.09	94.00	0.85	0.85	0.47
	2748.00	8.80	185.35	120.3	-62.52	-10.72	2744.67	-2109.33	62.52	95.00	1.35	1.32	-2.09
	2842.00	8.73	185.79	123.0	-76.77	-12.11	2837.58	-2016.42	76.77	94.00	0.10	-0.07	0.47
	2937.00	8.81	186.28	125.7	-91.18	-13.63	2931.47	-1922.53	91.18	95.00	0.12	0.08	0.52
	3031.00	8.80	186.60	93.2	-105.47	-15.24	3024.36	-1829.64	105.47	94.00	0.05	-0.01	0.34
	3126.00	8.66	186.90	125.7	-119.79	-16.94	3118.26	-1735.74	119.79	95.00	0.15	-0.15	0.32
	3220.00	8.64	189.66	128.4	-133.78	-18.97	3211.19	-1642.81	133.78	94.00	0.44	-0.02	2.94
	3315.00	8.48	190.36	131.1	-147.70	-21.43	3305.13	-1548.87	147.70	95.00	0.20	-0.17	0.74
	3409.00	8.45	189.94	131.1	-161.32	-23.87	3398.11	-1455.89	161.32	94.00	0.07	-0.03	-0.45
	3503.00	8.42	189.72	131.1	-174.91	-26.22	3491.09	-1362.91	174.91	94.00	0.05	-0.03	-0.23
	3598.00	8.40	190.50	131.1	-188.59	-28.66	3585.07	-1268.93	188.59	95.00	0.12	-0.02	0.82
	3692.00	8.38	191.60	133.8	-202.05	-31.29	3678.06	-1175.94	202.05	94.00	0.17	-0.02	1.17
	3787.00	8.66	194.81	136.5	-215.74	-34.51	3772.01	-1081.99	215.74	95.00	0.58	0.29	3.38
	3881.00	8.44	189.08	136.5	-229.40	-37.41	3864.97	-989.03	229.40	94.00	0.94	-0.23	-6.10
	3975.00	8.43	188.58	136.5	-243.02	-39.52	3957.95	-896.05	243.02	94.00	0.08	-0.01	-0.53
	4164.00	8.29	188.40	128.4	-270.20	-43.58	4144.95	-709.05	270.20	189.00	0.08	-0.07	-0.10
	4259.00	8.24	188.26	141.9	-283.71	-45.56	4238.96	-615.04	283.71	95.00	0.06	-0.05	-0.15
	4353.00	8.46	188.08	144.6	-297.23	-47.50	4331.96	-522.04	297.23	94.00	0.24	0.23	-0.19
	4448.00	8.43	188.07	144.6	-311.04	-49.46	4425.93	-428.07	311.04	95.00	0.03	-0.03	-0.01
	4542.00	8.26	188.16	144.6	-324.55	-51.38	4518.94	-335.06	324.55	94.00	0.18	-0.18	0.10
	4732.00	8.15	188.26	147.3	-351.38	-55.26	4706.99	-147.01	351.38	190.00	0.06	-0.06	0.05
	4826.00	8.45	187.68	152.7	-364.82	-57.14	4800.01	-53.99	364.82	94.00	0.33	0.32	-0.62
	4921.00	8.08	186.97	152.7	-378.37	-58.88	4894.02	40.02	378.37	95.00	0.40	-0.39	-0.75
	5015.00	8.43	188.90	155.4	-391.73	-60.75	4987.05	133.05	391.73	94.00	0.47	0.37	2.05
	5110.00	8.42	188.55	155.4	-405.49	-62.86	5081.02	227.02	405.49	95.00	0.05	-0.01	-0.37
	5204.00	8.41	190.25	158.1	-419.06	-65.10	5174.01	320.01	419.06	94.00	0.26	-0.01	1.81
	5298.00	8.12	190.77	160.8	-432.34	-67.57	5267.03	413.03	432.34	94.00	0.32	-0.31	0.55
	5393.00	8.00	189.43	160.8	-445.46	-69.91	5361.10	507.10	445.46	95.00	0.23	-0.13	-1.41
	5488.00	8.23	190.23	163.5	-458.67	-72.20	5455.14	601.14	458.67	95.00	0.27	0.24	0.84
	5582.00	7.88	191.93	166.2	-471.60	-74.72	5548.22	694.22	471.60	94.00	0.45	-0.37	1.81
	5677.00	8.34	193.69	168.9	-484.66	-77.70	5642.27	788.27	484.66	95.00	0.55	0.48	1.85
	5771.00	8.07	189.93	168.9	-497.78	-80.45	5735.31	881.31	497.78	94.00	0.64	-0.29	-4.00
	5866.00	8.14	188.26	168.9	-511.01	-82.57	5829.36	975.36	511.01	95.00	0.26	0.07	-1.76
	5961.00	7.87	188.96	171.6	-524.09	-84.55	5923.43	1069.43	524.09	95.00	0.30	-0.28	0.74
	6055.00	8.14	189.02	174.3	-537.02	-86.59	6016.51	1162.51	537.02	94.00	0.29	0.29	0.06
	6150.00	8.06	189.01	174.3	-550.24	-88.69	6110.57	1256.57	550.24	95.00	0.08	-0.08	-0.01
	6244.00	7.93	179.96	177.0	-563.23	-89.72	6203.66	1349.66	563.23	94.00	1.34	-0.14	-9.63
	6339.00	8.00	180.10	177.0	-576.40	-89.72	6297.74	1443.74	576.40	95.00	0.08	0.07	0.15
	6433.00	14.73	179.23	177.0	-594.91	-89.57	6389.84	1535.84	594.91	94.00	7.16	7.16	-0.93
	6527.00	23.51	179.83	179.7	-625.67	-89.36	6478.57	1624.57	625.67	94.00	9.34	9.34	0.64

	6622.00	31.67	179.80	179.7	-669.63	-89.21	6562.70	1708.70	669.63	95.00	8.59	8.59	-0.03
	6717.00	39.98	180.64	182.5	-725.18	-89.47	6639.66	1785.66	725.18	95.00	8.76	8.75	0.88
	6811.00	48.69	181.33	185.2	-790.80	-90.63	6706.83	1852.83	790.80	94.00	9.28	9.27	0.73
	6906.00	57.56	181.36	187.9	-866.70	-92.41	6763.78	1909.78	866.70	95.00	9.34	9.34	0.03
	7001.00	65.94	181.65	190.6	-950.28	-94.62	6808.70	1954.70	950.28	95.00	8.83	8.82	0.31
	7095.00	75.82	183.16	193.3	-1038.90	-98.37	6839.46	1985.46	1038.90	94.00	10.62	10.51	1.61
	7190.00	82.28	181.80	193.3	-1132.03	-102.39	6857.49	2003.49	1132.03	95.00	6.94	6.80	-1.43
	7284.00	89.69	180.67	193.3	-1225.71	-104.41	6864.07	2010.07	1225.71	94.00	7.97	7.88	-1.20
	7379.00	89.32	176.35	193.3	-1320.65	-101.94	6864.89	2010.89	1320.65	95.00	4.56	-0.39	-4.55
	7474.00	89.60	176.49	201.4	-1415.46	-96.01	6865.79	2011.79	1415.46	95.00	0.33	0.29	0.15
	7568.00	88.52	178.73	204.1	-1509.36	-92.09	6867.33	2013.33	1509.36	94.00	2.65	-1.15	2.38
	7663.00	89.05	178.30	206.8	-1604.31	-89.63	6869.34	2015.34	1604.31	95.00	0.72	0.56	-0.45
	7757.00	89.60	178.37	209.5	-1698.26	-86.90	6870.45	2016.45	1698.26	94.00	0.59	0.59	0.07
	7852.00	89.88	179.81	209.5	-1793.25	-85.39	6870.88	2016.88	1793.25	95.00	1.54	0.29	1.52
	7946.00	91.05	180.92	212.2	-1887.24	-85.99	6870.12	2016.12	1887.24	94.00	1.72	1.24	1.18
	8041.00	89.11	179.18	214.9	-1982.23	-86.07	6869.99	2015.99	1982.23	95.00	2.74	-2.04	-1.83
	8135.00	90.43	180.78	217.6	-2076.22	-86.04	6870.36	2016.36	2076.22	94.00	2.21	1.40	1.70
	8230.00	90.46	181.13	282.5	-2171.21	-87.62	6869.63	2015.63	2171.21	95.00	0.37	0.03	0.37
	8324.00	90.74	180.61	220.3	-2265.19	-89.05	6868.64	2014.64	2265.19	94.00	0.63	0.30	-0.55
	8419.00	90.12	180.48	220.3	-2360.18	-89.95	6867.93	2013.93	2360.18	95.00	0.67	-0.65	-0.14
	8513.00	90.03	180.04	223.0	-2454.18	-90.38	6867.81	2013.81	2454.18	94.00	0.48	-0.10	-0.47
	8607.00	89.85	180.52	223.0	-2548.18	-90.84	6867.90	2013.90	2548.18	94.00	0.55	-0.19	0.51
	8702.00	91.02	181.03	223.0	-2643.17	-92.12	6867.18	2013.18	2643.17	95.00	1.34	1.23	0.54
	8796.00	91.82	178.89	223.0	-2737.13	-92.06	6864.85	2010.85	2737.13	94.00	2.43	0.85	-2.28
	8890.00	91.26	178.43	223.0	-2831.07	-89.86	6862.33	2008.33	2831.07	94.00	0.77	-0.60	-0.49
	8985.00	90.92	178.44	223.0	-2926.02	-87.26	6860.52	2006.52	2926.02	95.00	0.36	-0.36	0.01
	9079.00	91.02	178.57	225.7	-3019.97	-84.81	6858.93	2004.93	3019.97	94.00	0.17	0.11	0.14
	9174.00	91.29	179.49	228.4	-3114.94	-83.20	6857.01	2003.01	3114.94	95.00	1.01	0.28	0.97
	9268.00	90.99	178.52	231.1	-3208.91	-81.57	6855.14	2001.14	3208.91	94.00	1.08	-0.32	-1.03
	9363.00	90.83	178.01	231.1	-3303.85	-78.70	6853.63	1999.63	3303.85	95.00	0.56	-0.17	-0.54
	9457.00	90.95	177.88	231.1	-3397.78	-75.33	6852.17	1998.17	3397.78	94.00	0.19	0.13	-0.14
	9552.00	91.05	178.37	233.8	-3492.71	-72.22	6850.52	1996.52	3492.71	95.00	0.53	0.11	0.52
	9647.00	91.17	178.02	236.5	-3587.65	-69.23	6848.68	1994.68	3587.65	95.00	0.39	0.13	-0.37
	9741.00	91.29	178.94	236.5	-3681.59	-66.73	6846.66	1992.66	3681.59	94.00	0.99	0.13	0.98
	9836.00	91.42	179.35	233.8	-3776.55	-65.32	6844.41	1990.41	3776.55	95.00	0.45	0.14	0.43
	9930.00	91.48	178.02	236.5	-3870.50	-63.16	6842.03	1988.03	3870.50	94.00	1.42	0.06	-1.41
	10025.00	91.32	178.61	239.2	-3965.43	-60.37	6839.71	1985.71	3965.43	95.00	0.64	-0.17	0.62
	10119.00	91.14	178.88	239.2	-4059.38	-58.31	6837.69	1983.69	4059.38	94.00	0.35	-0.19	0.29
	10214.00	91.45	180.90	239.2	-4154.35	-58.13	6835.55	1981.55	4154.35	95.00	2.15	0.33	2.13
	10308.00	91.51	180.34	239.2	-4248.32	-59.14	6833.12	1979.12	4248.32	94.00	0.60	0.06	-0.60
	10403.00	91.32	180.47	241.9	-4343.29	-59.82	6830.77	1976.77	4343.29	95.00	0.24	-0.20	0.14
	10498.00	91.23	180.36	241.9	-4438.26	-60.50	6828.66	1974.66	4438.26	95.00	0.15	-0.09	-0.12
	10592.00	91.14	180.45	241.9	-4532.24	-61.17	6826.72	1972.72	4532.24	94.00	0.14	-0.10	0.10
	10686.00	91.88	180.84	241.9	-4626.20	-62.22	6824.24	1970.24	4626.20	94.00	0.89	0.79	0.41
	10781.00	91.51	179.28	241.9	-4721.15	-62.32	6821.43	1967.43	4721.15	95.00	1.69	-0.39	-1.64
	10875.00	91.51	179.52	241.9	-4815.11	-61.34	6818.95	1964.95	4815.11	94.00	0.26	0.00	0.26
	10970.00	91.57	178.85	241.9	-4910.07	-59.99	6816.40	1962.40	4910.07	95.00	0.71	0.06	-0.71
	11064.00	91.48	179.36	244.6	-5004.03	-58.52	6813.90	1959.90	5004.03	94.00	0.55	-0.10	0.54
	11159.00	91.51	179.09	247.3	-5098.98	-57.24	6811.42	1957.42	5098.98	95.00	0.29	0.03	-0.28
	11253.00	91.60	178.02	247.3	-5192.92	-54.87	6808.87	1954.87	5192.92	94.00	1.14	0.10	-1.14
	11348.00	91.48	178.34	250.0	-5287.84	-51.85	6806.31	1952.31	5287.84	95.00	0.36	-0.13	0.34
	11442.00	91.57	179.80	247.3	-5381.79	-50.33	6803.81	1949.81	5381.79	94.00	1.56	0.10	1.55
	11537.00	91.35	176.96	247.3	-5476.71	-47.64	6801.39	1947.39	5476.71	95.00	3.00	-0.23	-2.99
	11631.00	91.79	178.51	247.3	-5570.60	-43.93	6798.82	1944.82	5570.60	94.00	1.71	0.47	1.65
	11726.00	92.09	179.94	250.0	-5665.53	-42.64	6795.60	1941.60	5665.53	95.00	1.54	0.32	1.51
	11820.00	91.54	178.44	250.0	-5759.47	-41.32	6792.62	1938.62	5759.47	94.00	1.70	-0.59	-1.60
	11915.00	91.11	178.91	250.0	-5854.42	-39.12	6790.43	1936.43	5854.42	95.00	0.67	-0.45	0.49
	12010.00	91.66	178.88	252.7	-5949.37	-37.29	6788.13	1934.13	5949.37	95.00	0.58	0.58	-0.03
	12105.00	91.75	179.36	252.7	-6044.32	-35.83	6785.30	1931.30	6044.32	95.00	0.51	0.09	0.51
	12199.00	91.29	179.38	252.7	-6138.28	-34.80	6782.81	1928.81	6138.28	94.00	0.49	-0.49	0.02
	12293.00	91.75	179.02	252.7	-6232.24	-33.48	6780.32	1926.32	6232.24	94.00	0.62	0.49	-0.38
	12388.00	89.78	177.88	252.7	-6327.19	-30.91	6779.05	1925.05	6327.19	95.00	2.40	-2.07	-1.20

	12482.00	89.72	179.58	255.4	-6421.16	-28.83	6779.46	1925.46	6421.16	94.00	1.81	-0.06	1.81
	12577.00	90.12	178.94	255.4	-6516.15	-27.60	6779.59	1925.59	6516.15	95.00	0.79	0.42	-0.67
	12671.00	90.25	179.17	255.4	-6610.14	-26.05	6779.29	1925.29	6610.14	94.00	0.28	0.14	0.24
	12765.00	90.18	178.93	255.4	-6704.13	-24.50	6778.93	1924.93	6704.13	94.00	0.27	-0.07	-0.26
	12860.00	90.49	179.12	258.1	-6799.11	-22.88	6778.38	1924.38	6799.11	95.00	0.38	0.33	0.20
	12954.00	90.12	179.15	258.1	-6893.10	-21.46	6777.88	1923.88	6893.10	94.00	0.39	-0.39	0.03
	13049.00	90.06	179.00	258.1	-6988.09	-19.93	6777.73	1923.73	6988.09	95.00	0.17	-0.06	-0.16
	13143.00	90.34	178.56	260.8	-7082.06	-17.93	6777.40	1923.40	7082.06	94.00	0.55	0.30	-0.47
	13237.00	90.12	178.87	260.8	-7176.04	-15.82	6777.02	1923.02	7176.04	94.00	0.40	-0.23	0.33
	13332.00	89.97	178.50	260.8	-7271.01	-13.64	6776.95	1922.95	7271.01	95.00	0.42	-0.16	-0.39
	13426.00	90.15	180.65	244.6	-7365.01	-12.94	6776.85	1922.85	7365.01	94.00	2.30	0.19	2.29
	13521.00	89.91	180.56	250.0	-7460.00	-13.94	6776.80	1922.80	7460.00	95.00	0.27	-0.25	-0.09
	13615.00	90.46	180.29	252.7	-7554.00	-14.64	6776.50	1922.50	7554.00	94.00	0.65	0.59	-0.29
	13710.00	90.43	180.38	255.4	-7648.99	-15.20	6775.76	1921.76	7648.99	95.00	0.10	-0.03	0.09
	13804.00	90.22	179.96	258.1	-7742.99	-15.47	6775.23	1921.23	7742.99	94.00	0.50	-0.22	-0.45
	13993.00	90.46	179.71	258.1	-7931.99	-14.93	6774.10	1920.10	7931.99	189.00	0.18	0.13	-0.13
	14087.00	89.69	179.52	260.8	-8025.98	-14.30	6773.98	1919.98	8025.98	94.00	0.84	-0.82	-0.20
	14182.00	89.75	179.63	260.8	-8120.98	-13.59	6774.45	1920.45	8120.98	95.00	0.13	0.06	0.12
	14276.00	89.69	180.08	260.8	-8214.98	-13.36	6774.91	1920.91	8214.98	94.00	0.48	-0.06	0.48
	14371.00	89.69	179.85	260.8	-8309.98	-13.30	6775.42	1921.42	8309.98	95.00	0.24	-0.00	-0.24
	14465.00	89.88	180.02	260.8	-8403.98	-13.19	6775.77	1921.77	8403.98	94.00	0.27	0.20	0.18
	14560.00	89.66	179.59	260.8	-8498.97	-12.87	6776.15	1922.15	8498.97	95.00	0.51	-0.23	-0.45
	14654.00	89.69	179.54	260.8	-8592.97	-12.15	6776.69	1922.69	8592.97	94.00	0.06	0.03	-0.05
	14749.00	90.03	179.51	260.8	-8687.97	-11.37	6776.92	1922.92	8687.97	95.00	0.36	0.36	-0.03
	14843.00	90.03	179.39	263.5	-8781.96	-10.46	6776.87	1922.87	8781.96	94.00	0.13	-0.00	-0.13
	14938.00	89.88	179.96	263.5	-8876.96	-9.93	6776.94	1922.94	8876.96	95.00	0.62	-0.16	0.60
	15032.00	89.51	179.10	263.5	-8970.95	-9.15	6777.44	1923.44	8970.95	94.00	1.00	-0.39	-0.91
	15127.00	89.91	179.29	263.5	-9065.94	-7.82	6777.93	1923.93	9065.94	95.00	0.47	0.42	0.20
	15221.00	90.03	179.68	263.5	-9159.94	-6.98	6777.97	1923.97	9159.94	94.00	0.43	0.13	0.41
	15316.00	89.69	179.47	263.5	-9254.94	-6.27	6778.21	1924.21	9254.94	95.00	0.42	-0.36	-0.22
	15410.00	89.85	179.20	263.5	-9348.93	-5.18	6778.58	1924.58	9348.93	94.00	0.33	0.17	-0.29
	15505.00	89.54	179.80	260.8	-9443.92	-4.35	6779.09	1925.09	9443.92	95.00	0.71	-0.33	0.63
	15599.00	89.63	179.86	263.5	-9537.92	-4.07	6779.77	1925.77	9537.92	94.00	0.12	0.10	0.06
	15694.00	90.00	179.45	263.5	-9632.92	-3.50	6780.08	1926.08	9632.92	95.00	0.58	0.39	-0.43
	15788.00	89.48	178.93	263.5	-9726.91	-2.17	6780.50	1926.50	9726.91	94.00	0.78	-0.55	-0.55
	15882.00	90.22	179.52	266.2	-9820.90	-0.90	6780.75	1926.75	9820.90	94.00	1.01	0.79	0.63
	15977.00	90.49	179.10	266.2	-9915.89	0.24	6780.16	1926.16	9915.89	95.00	0.53	0.28	-0.44
	16071.00	90.22	179.18	266.2	-10009.88	1.66	6779.58	1925.58	10009.88	94.00	0.30	-0.29	0.09
	16166.00	89.97	179.07	269.0	-10104.86	3.11	6779.42	1925.42	10104.86	95.00	0.29	-0.26	-0.12
	16260.00	90.06	178.75	269.0	-10198.85	4.89	6779.40	1925.40	10198.85	94.00	0.35	0.10	-0.34
	16355.00	89.72	178.77	269.0	-10293.82	6.95	6779.58	1925.58	10293.82	95.00	0.36	-0.36	0.02
	16449.00	90.00	179.45	269.0	-10387.81	8.41	6779.81	1925.81	10387.81	94.00	0.78	0.30	0.72
	16544.00	90.00	178.45	271.7	-10482.80	10.15	6779.81	1925.81	10482.80	95.00	1.05	0.00	-1.05
	16638.00	89.72	179.19	271.7	-10576.77	12.09	6780.04	1926.04	10576.77	94.00	0.84	-0.30	0.79
	16733.00	90.74	178.34	271.7	-10671.75	14.13	6779.66	1925.66	10671.75	95.00	1.40	1.07	-0.89
	16828.00	89.85	178.52	271.7	-10766.71	16.74	6779.17	1925.17	10766.71	95.00	0.96	-0.94	0.19
	16922.00	90.06	178.74	271.7	-10860.68	18.98	6779.24	1925.24	10860.68	94.00	0.32	0.22	0.23
	17017.00	90.71	178.43	274.4	-10955.65	21.33	6778.60	1924.60	10955.65	95.00	0.76	0.68	-0.33
	17111.00	90.09	178.50	274.4	-11049.62	23.85	6777.95	1923.95	11049.62	94.00	0.66	-0.66	0.07
	17206.00	90.46	179.85	274.4	-11144.60	25.22	6777.49	1923.49	11144.60	95.00	1.47	0.39	1.42
	17300.00	90.15	177.72	274.4	-11238.57	27.21	6776.99	1922.99	11238.57	94.00	2.29	-0.33	-2.27
	17395.00	90.18	178.87	271.7	-11333.53	30.04	6776.72	1922.72	11333.53	95.00	1.21	0.03	1.21
Projection	17435.00	90.18	178.87	N/A	-11373.52	30.82	6776.59	1922.59	11373.52	40.00	0.00	-0.01	-0.00