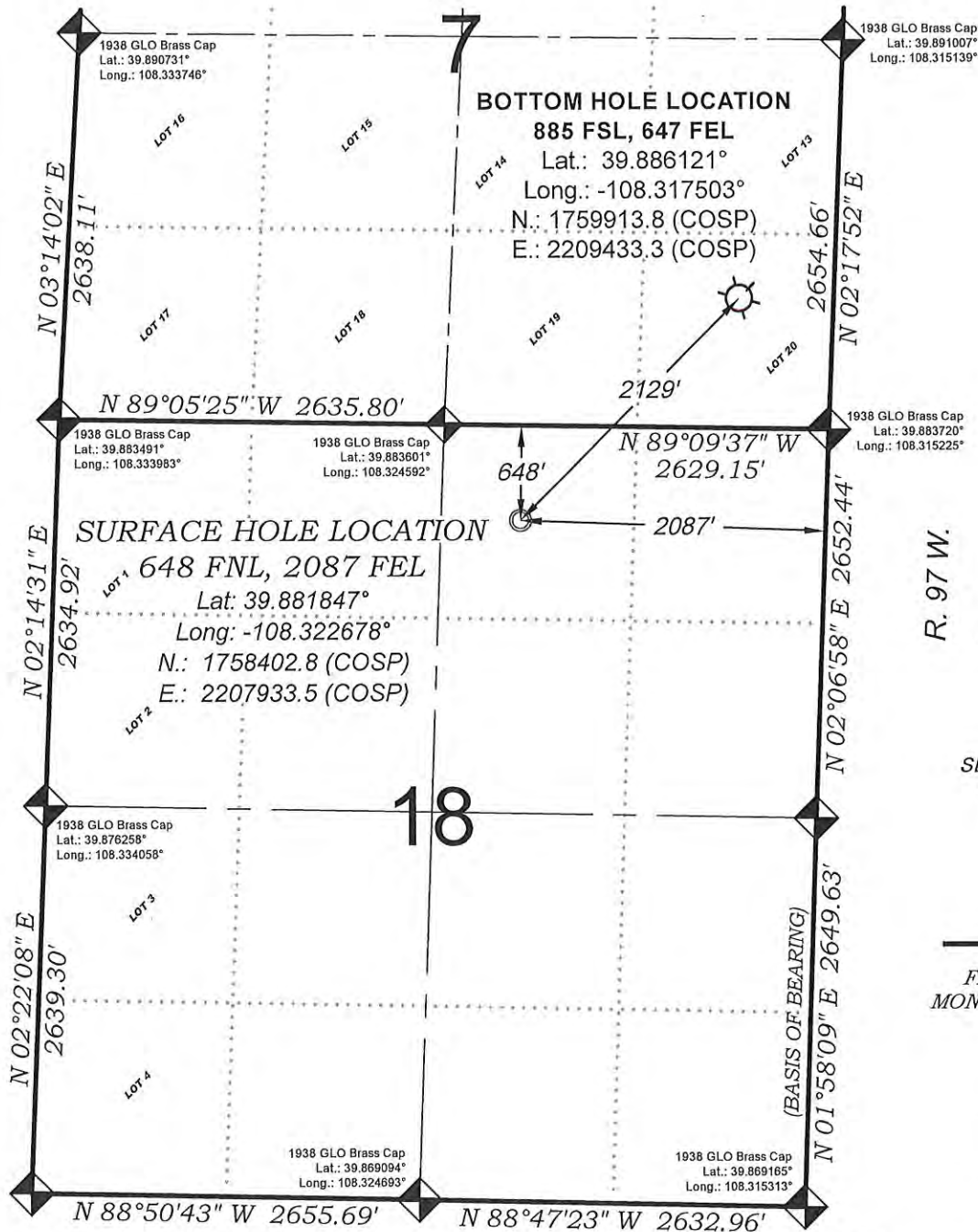


T. 2 S.



0 600 1200
GRAPHIC SCALE IN FEET
1 INCH = 1200 FEET

EXISTING GROUND ELEV.: 6620.0
PROPOSED PAD ELEV.: 6620.9

SEE LOCATION DRAWING PLAT FOR
VISIBLE IMPROVEMENTS WITHIN
500' OF THIS LOCATION

- LEGEND -

FIELD LOCATED SECTION
MONUMENTS AS DESCRIBED

FIELD SURVEYED
WELL LOCATION

CALCULATED BOTTOM
HOLE LOCATION

CALCULATED SECTION
CORNER LOCATION

SURVEYORS STATEMENT

I, MICHAEL J. LANGHORNE, A REGISTERED LAND SURVEYOR IN THE STATE OF COLORADO DO HEREBY CERTIFY THAT THE SURVEY SHOWN HEREON WAS PREPARED UNDER MY DIRECT SUPERVISION AND HAS BEEN STAKED ON THE GROUND AS SHOWN ON THE PLAT AND CHECKING THAT THIS MAP IS A TRUE REPRESENTATION THEREOF.

MICHAEL J. LANGHORNE, COLORADO REGISTRATION NO. 36572
FOR AND ON BEHALF OF

BOOKCLIFF SURVEY SERVICES, INC.

REVISED: 3/19/20

136 East Third Street
Rifle, Colorado
81650 Ph. (970)
625-2720 Fax (970)
625-2773

BOOKCLIFF
Survey Services, Inc.

SURVEY DATE: 8/23/19
MAP DATE: 9/04/19
SCALE: 1" = 1200'
PLAT: 1 of 7
PROJECT: TEP Valley

NOTES

- 1) ELEVATIONS BASED ON N.A.V.D. 1988 PUBLISHED COORDINATES.
- 2) LATITUDES AND LONGITUDES ARE BASED ON NAD 83, PUBLISHED COORDINATES.
- 3) STATE PLANE COORDINATES ARE BASED ON COLORADO CENTRAL ZONE, U.S. SURVEY FEET.
- 4) ELEVATION MASK SET TO 15"
- 5) GPS OPERATOR J. KIRKPATRICK, OBSERVED A PDOP OF 3.2 FOR SURVEY POINT NUMBER 19154.
- 6) SURFACE AND BOTTOM HOLE LOCATIONS ARE MEASURED 90° FROM SECTION LINES.

REFERENCES

- 1) 1940 (GLO) & 1983 (BLM) Dependent ReSurvey T. 2 S., R. 97 W., 6th P.M.
- 2) U.S.G.S. QUAD: Rock School and Square S Ranch, CO

WELL LOCATION PLAT Prepared for:

TERRA
ENERGY PARTNERS

TEP Rocky Mountain LLC

NW1/4NE1/4 SECTION 18
T. 2 S., R. 97 W. of the 6th. P.M.
RIO BLANCO COUNTY, COLORADO