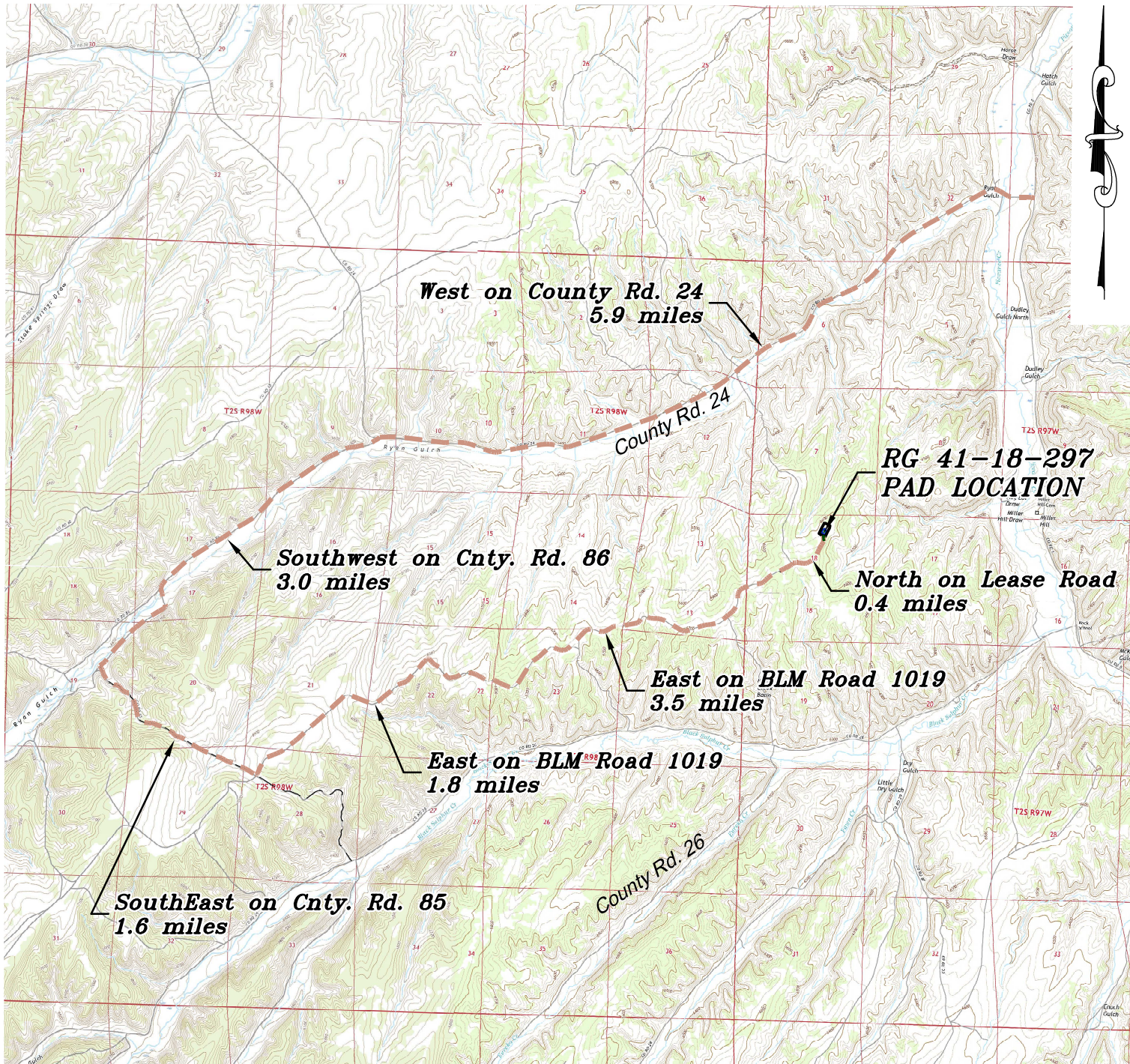
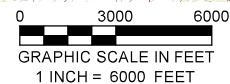


Section 18
T. 2 S., R. 97 W.



Existing Road - - - - -



ACCESS DESCRIPTION:

FROM THE INTERSECTION OF STATE HIGHWAY 64 AND RIO BLANCO COUNTY ROAD 5 PROCEED SOUTHERLY ALONG COUNTY ROAD 5, ± 14.5 MILES TO THE INTERSECTION WITH COUNTY ROAD 24 (Mile Marker 26.8), PROCEED WEST ALONG COUNTY ROAD 24, ± 5.9 MILES TO THE INTERSECTION WITH COUNTY ROAD 86, PROCEED LEFT IN A SOUTHWEST DIRECTION ± 3.0 MILES TO THE INTERSECTION WITH A COUNTY ROAD 85, PROCEED LEFT IN A SOUTHEAST DIRECTION ± 1.6 MILES TO THE INTERSECTION WITH BLM ROAD 1019, PROCEED LEFT IN AN EASTERLY DIRECTION ± 1.8 ON BLM ROAD 1019 TO A THREE-WAY INTERSECTION, KEEP RIGHT IN AN EASTERLY DIRECTION ON LEASE ROAD ± 3.5 MILES TO A THREE-WAY INTERSECTION, KEEP RIGHT IN AN EAST TO NORTHERLY DIRECTION ± 0.4 MILES TO THE EXISTING RG 41-18-297 DRILL PAD LOCATION, AS SHOWN HEREON.

REVISED: 5/12/20

136 East Third Street
Rifle, Colorado 81650
Ph. (970) 625-2720
Fax (970) 625-2773



BOOKCLIFF
Survey Services, Inc.

SCALE: 1" = 6000'
DATE: 9/03/19
PLAT: 5 of 7
PROJECT: TEP Valley
DFT: cs

Construction Plan Prepared for:



TEP Rocky Mountain LLC

RG 41-18-297 Drill Pad - Plat 5
ACCESS ROAD & TOPO MAP