

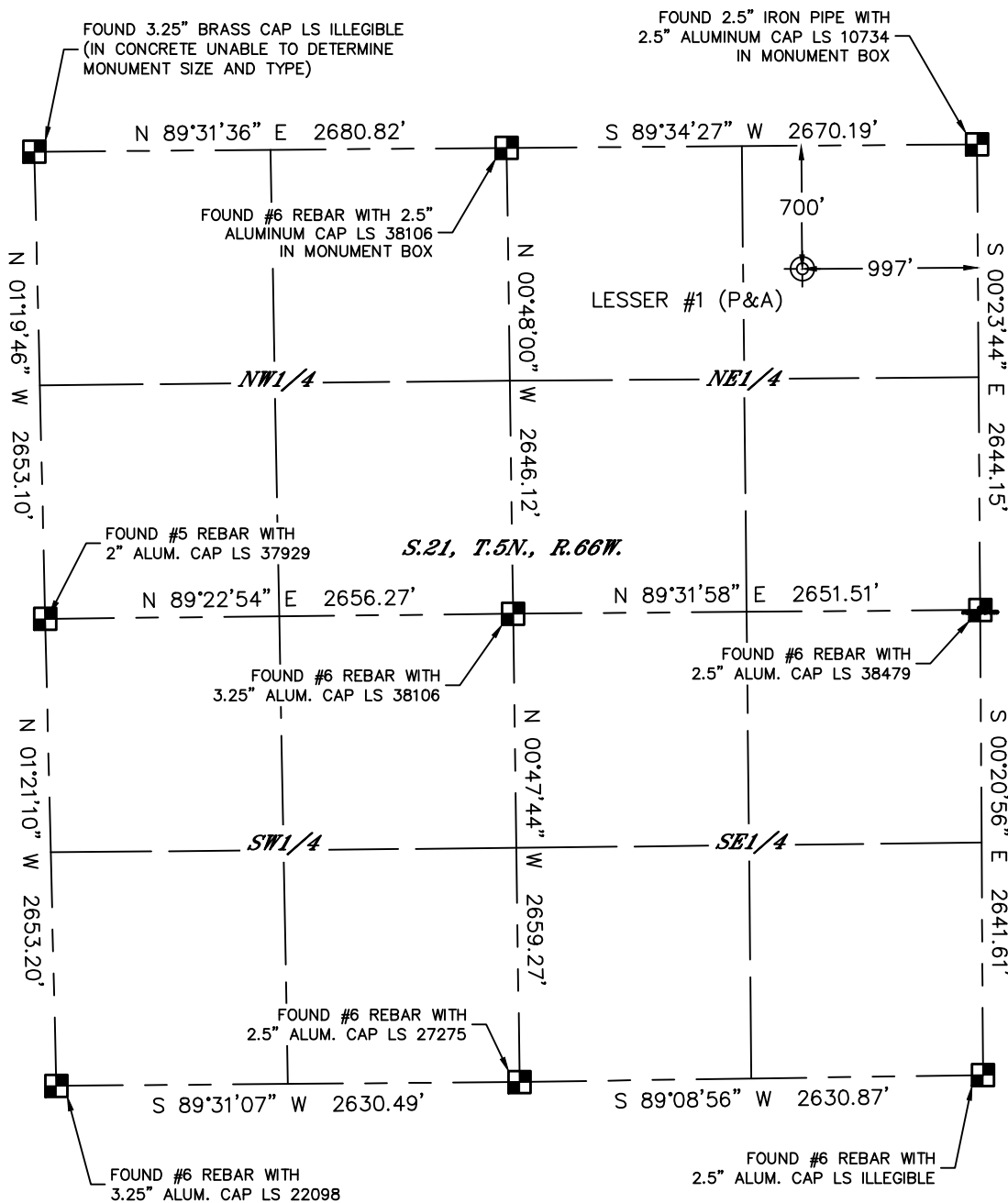


Lat40°, Inc. 6250 W. 10th Street, Unit 2, Greeley, CO 970-515-5294

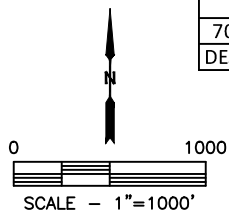
# PLUGGED & ABANDONED WELL EXHIBIT

LESSER #1

SECTION: 21  
TOWNSHIP: 5N  
RANGE: 66W  
6TH P.M.  
WELD COUNTY, CO



CLIENT: PDC ENERGY			LANDMAN: BRIAN DEROSE		
INSTRUMENT OPERATOR: SCOTT SHERARD			SURFACE USE: CROP		
SHL FOOTAGE	SHL LAT °	SHL LONG °	SHL PDOP	SHL ELEV (FT.)	SHL 1/4/1/4
700 FNL 997 FEL	40.39039	-104.77862	1.6	4880	NENE
DESCRIPTION: FOUND CAPPED WELL PIPE			SHLS T-R		
			21-5-66		



## LEGEND

- = ALIQUOT MONUMENT AS DESCRIBED
- = CALCULATED POSITION
- ⊙ = ABANDONED WELL

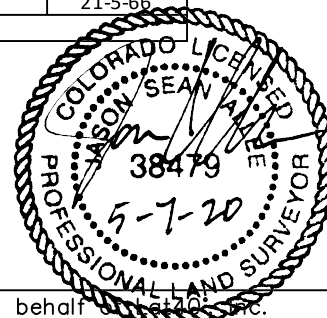
## NOTE:

- 1) Bearings shown are Grid Bearings of the Colorado State Plane Coordinate System, North Zone, North American Datum 1983. The lineal dimensions as contained herein are based upon the "U.S. Survey Foot."
- 2) Distances to section lines measured at 90 degrees from said section lines.
- 3) Ground elevations are based on an observed GPS elevation (NAVD 1988 DATUM).
- 4) Latitude and Longitude shown are (NAD 83 DATUM).
- 6) This map does not represent a boundary survey.

Sheet 1 of 2

Jason S. Allee—On behalf of Lat40°, Inc.  
Colorado Licensed Professional  
Land Surveyor No. 38479

DATE: 5/7/2020  
PROJECT#: 2020148





Lat40°, Inc. 6250 W. 10th Street, Unit 2, Greeley, CO 970-515-5294

# PLUGGED & ABANDONED WELL EXHIBIT

LESSER #1

SECTION: 21  
TOWNSHIP: 5N  
RANGE: 66W  
6TH P.M.  
WELD COUNTY, CO

DATE: 5/5/2020



VIEW NORTH



VIEW WEST



VIEW EAST



VIEW SOUTH