

Interim Reclamation and Stormwater Inspection

May 26, 2020

Operator: EXTRACTION OIL & GAS INC #10459

Location ID: 441566

Inspection Document #: 697501544

Weld County, CO

SESE Section 32 T2N R67W

Chris Binschus
Reclamation Specialist, COGCC



COLORADO

Oil & Gas Conservation
Commission

Department of Natural Resources

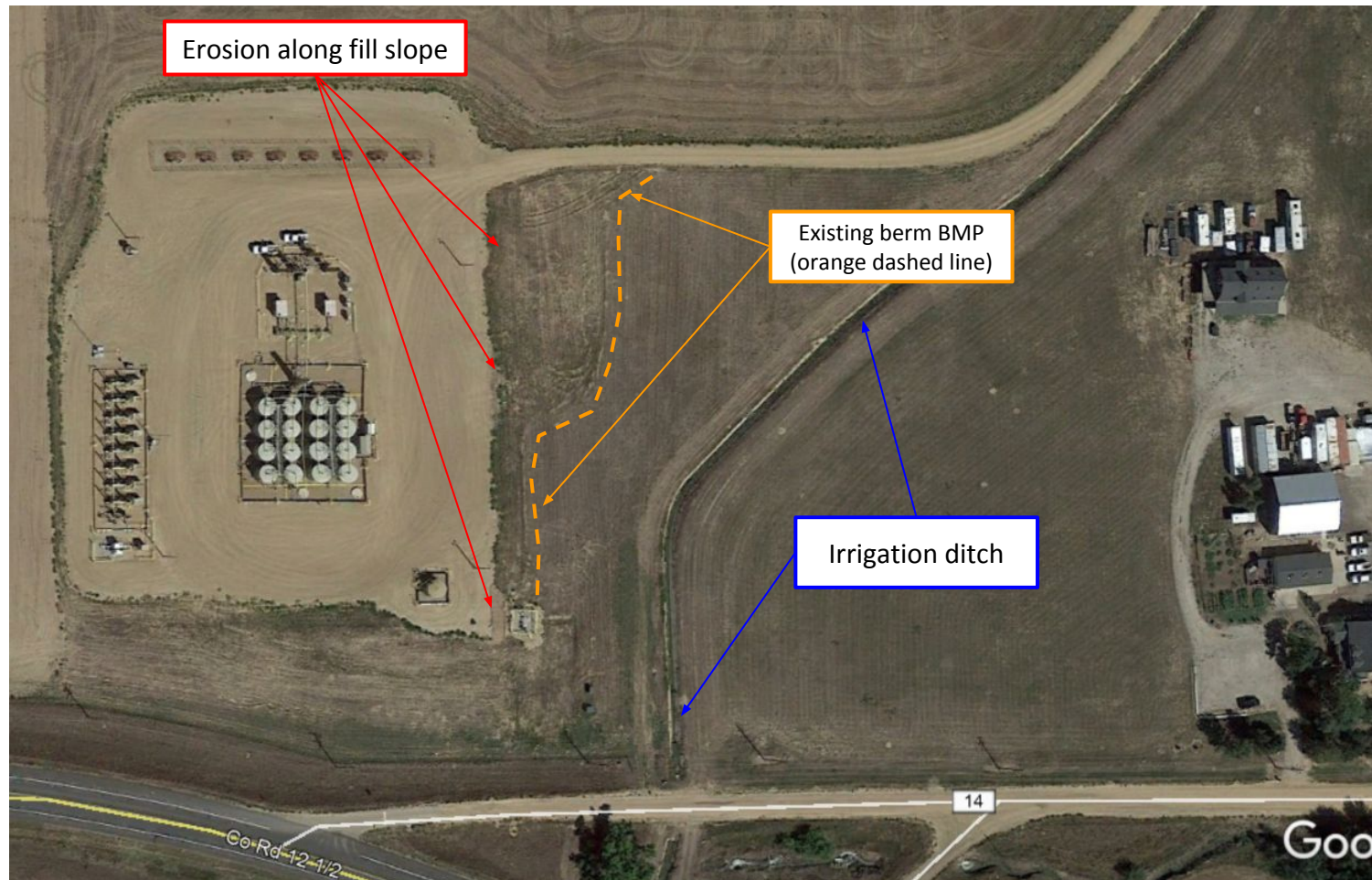


Photo 1. Google Earth aerial imagery taken 9/12/2019. Imagery illustrates a berm BMP that remains from construction operations along the eastern perimeter of the interim reclamation area.

At the time of this inspection on 5/26/2020, erosion was observed along the eastern fill slope of the well pad. Sediment discharge was observed within the interim reclamation areas but has not gone beyond the berm BMP.

Inspection Photos
Location Name: Troudt /32-M Pad
Location ID: 441566

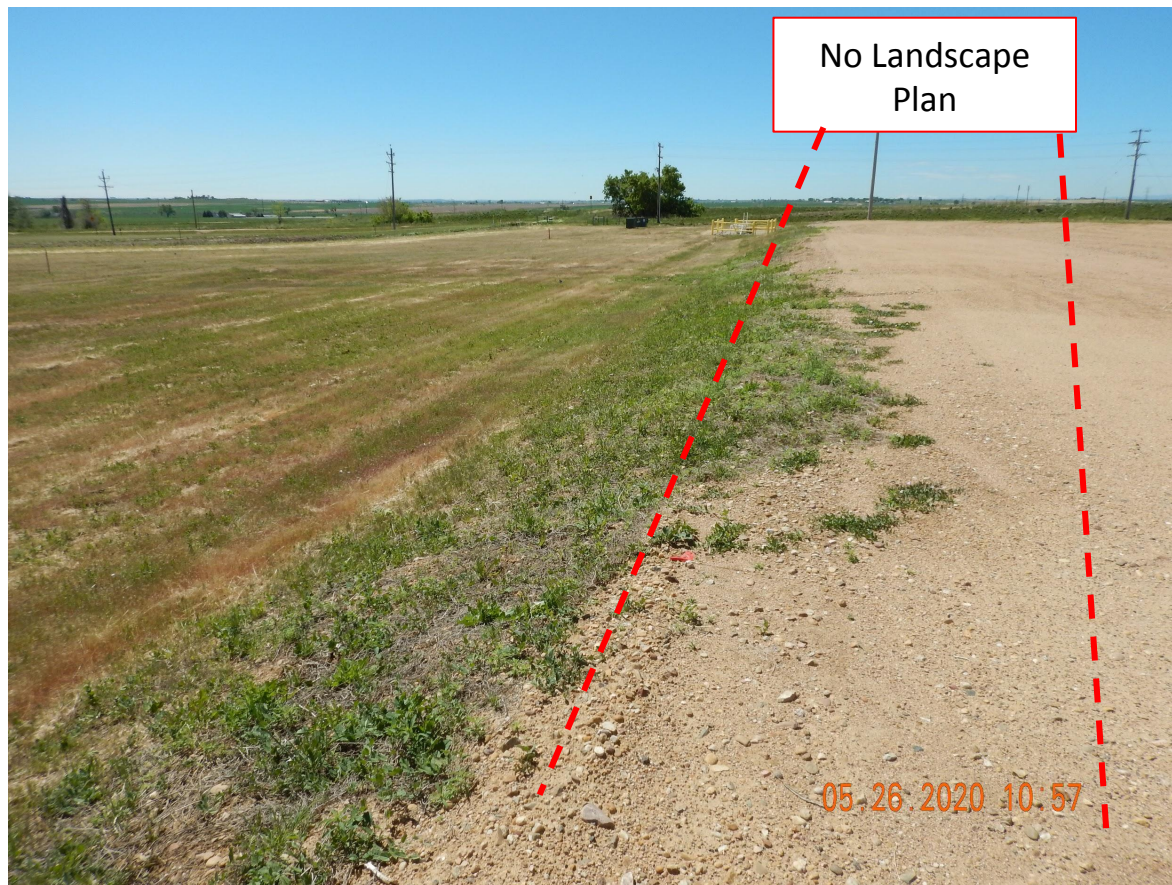


Photo 2. Photo taken from the northeastern location, facing South. Operator has failed to comply with the terms of the permit to conduct a final Landscape Plan (bermed and landscaped) along the eastern edge of location in order to mask the wellheads and facility from the nearby building unit owner. This should have been done as part of the Interim Reclamation process.

Inspection Photos
Location Name: Troudt /32-M Pad
Location ID: 441566



Photo 3. Photo taken from the eastern location, facing East. Photo illustrates rill erosion along the eastern fill slope. More erosion off other portions of the eastern location were observed.



Photo 4. Photo taken from another portion of the eastern location, facing East. See comments under Photo 3.

Inspection Photos
Location Name: Troudt /32-M Pad
Location ID: 441566



Photo 5. Photo taken from the southeastern location, facing East. Photo illustrates erosion and stormwater BMP maintenance required.

Inspection Photos
Location Name: Troudt /32-M Pad
Location ID: 441566



Photo 6. Photo taken from the eastern interim reclamation area, facing North. Photo illustrates a berm BMP that remains from construction operations along the eastern perimeter of the interim reclamation area. Sediment discharge has not gone beyond the berm BMP.

Inspection Photos
Location Name: Troudt /32-M Pad
Location ID: 441566



Photo 7. Photo taken from the eastern interim reclamation area, facing South. See comments under Photo 6.