

PROCEED IN A WESTERLY DIRECTION FROM RAYMER, COLORADO ALONG HIGHWAY 14 APPROXIMATELY 18.1 MILES TO THE JUNCTION OF THIS ROAD AND COUNTY ROAD 95 TO THE NORTH, TURN RIGHT AND PROCEED IN A NORTHERLY DIRECTION APPROXIMATELY 1.3 MILES TO THE JUNCTION OF THIS ROAD AND AN EXISTING ROAD TO THE EAST; TURN RIGHT AND PROCEED IN AN EASTERLY DIRECTION APPROXIMATELY 2.1 MILES TO THE BEGINNING OF THE PROPOSED ACCESS ROAD TO THE EAST; FOLLOW ROAD FLAGS IN AN EASTERLY, THEN SOUTHERLY DIRECTION APPROXIMATELY 2,350' TO THE PROPOSED LOCATION.

TOTAL DISTANCE FROM RAYMER, COLORADO TO THE PROPOSED WELL LOCATION IS APPROXIMATELY 21.9 MILES.

REV: 1 03-25-20 K.B. (COMPANY NAME & ACCESS CHANGE)

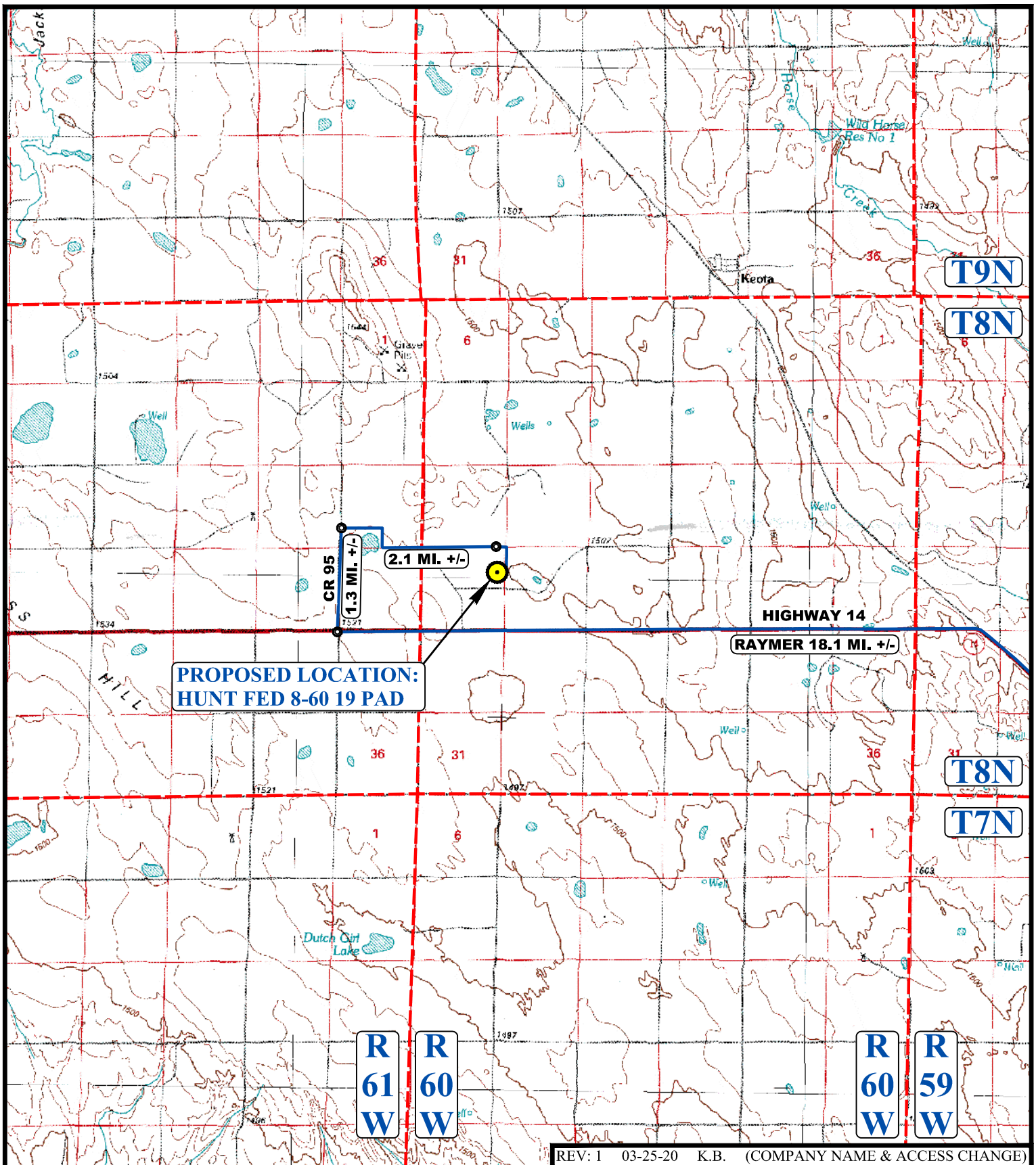
MALLARD EXPLORATION

HUNT FED 8-60 19 PAD
SE 1/4 NE 1/4, SECTION 19, T8N, R60W, 6th P.M.
WELD COUNTY, COLORADO



UELS, LLC
Corporate Office * 85 South 200 East
Vernal, UT 84078 * (435) 789-1017

SURVEYED BY	A.S., J.C.	03-24-20	
DRAWN BY	C.C.	09-01-17	
ROAD DESCRIPTION			



REV: 1 03-25-20 K.B. (COMPANY NAME & ACCESS CHANGE)

LEGEND:

 PROPOSED LOCATION



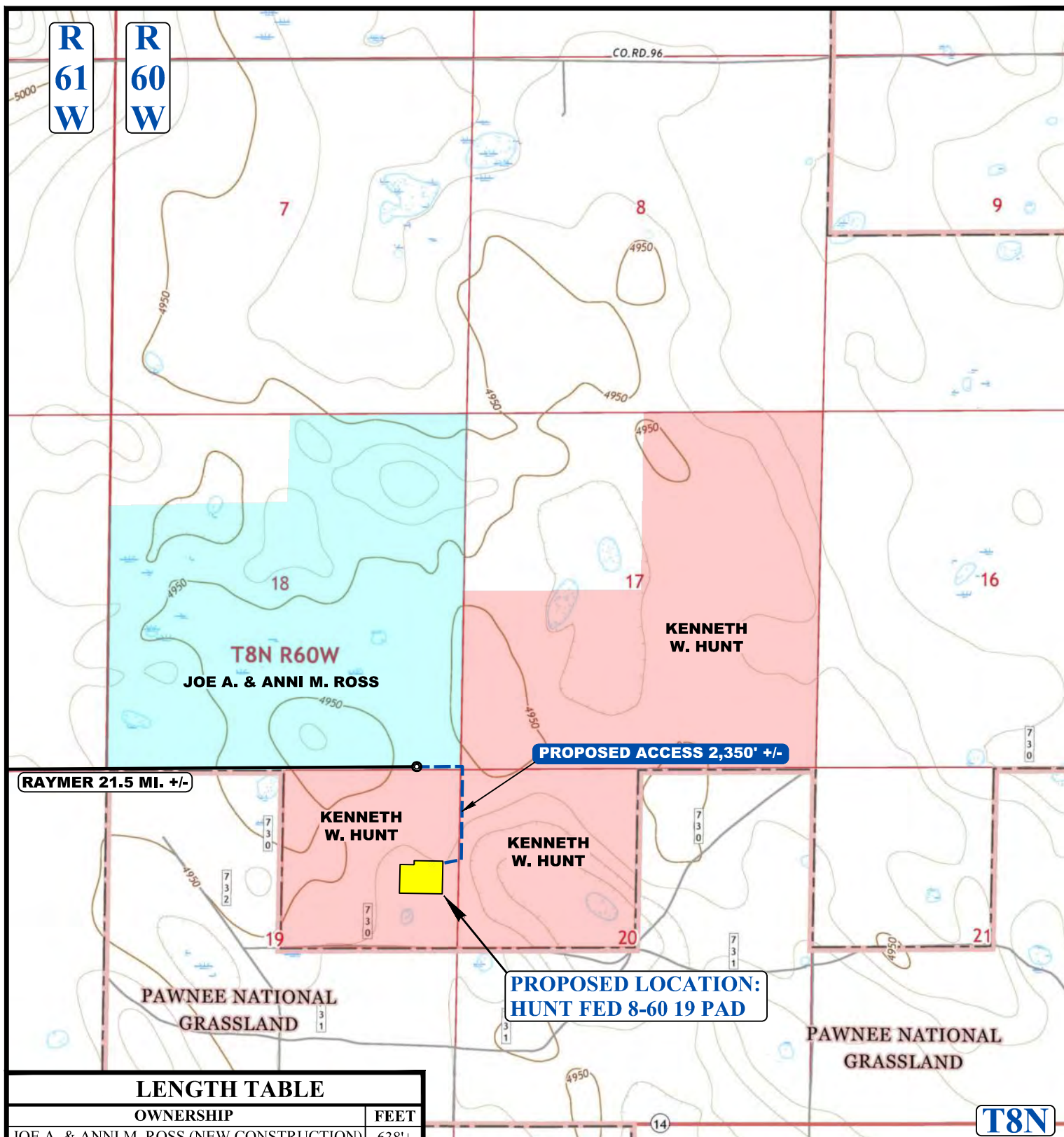
MALLARD EXPLORATION

HUNT FED 8-60 19 PAD
SE 1/4 NE 1/4, SECTION 19, T8N, R60W, 6th P.M.
WELD COUNTY, COLORADO



UELS, LLC
Corporate Office * 85 South 200 East
Vernal, UT 84078 * (435) 789-1017

SURVEYED BY	A.S., J.C.	03-24-20	SCALE
DRAWN BY	C.C.	09-01-17	1 : 100,000
ACCESS ROAD MAP			TOPO A



LENGTH TABLE	
OWNERSHIP	FEET
JOE A. & ANNI M. ROSS (NEW CONSTRUCTION)	638'±
KENNETH W. HUNT (NEW CONSTRUCTION)	1712'±

NOTE: PARCEL DATA SHOWN HAS BEEN OBTAINED FROM VARIOUS SOURCES AND SHOULD BE USED FOR MAPPING, GRAPHIC AND PLANNING PURPOSES ONLY. NO WARRANTY IS MADE BY UINTAH ENGINEERING AND LAND SURVEYING (UELS) FOR ACCURACY OF THE PARCEL DATA.

LEGEND:

———— EXISTING ROAD


----- PROPOSED ROAD

MALLARD EXPLORATION

HUNT FED 8-60 19 PAD

SE 1/4 NE 1/4, SECTION 19, T8N, R60W, 6th P.M.

WELD COUNTY, COLORADO



UELS, LLC

Corporate Office * 85 South 200 East

Vernal, UT 84078 * (435) 789-1017

SURVEYED BY	A.S., J.C.	03-24-20	SCALE
DRAWN BY	C.C.	09-01-17	1 : 24,000
ACCESS ROAD MAP			TOPO B