

# Bayswater Exploration & Production, LLC

Well Name: **COT WEST X-30-25HN**

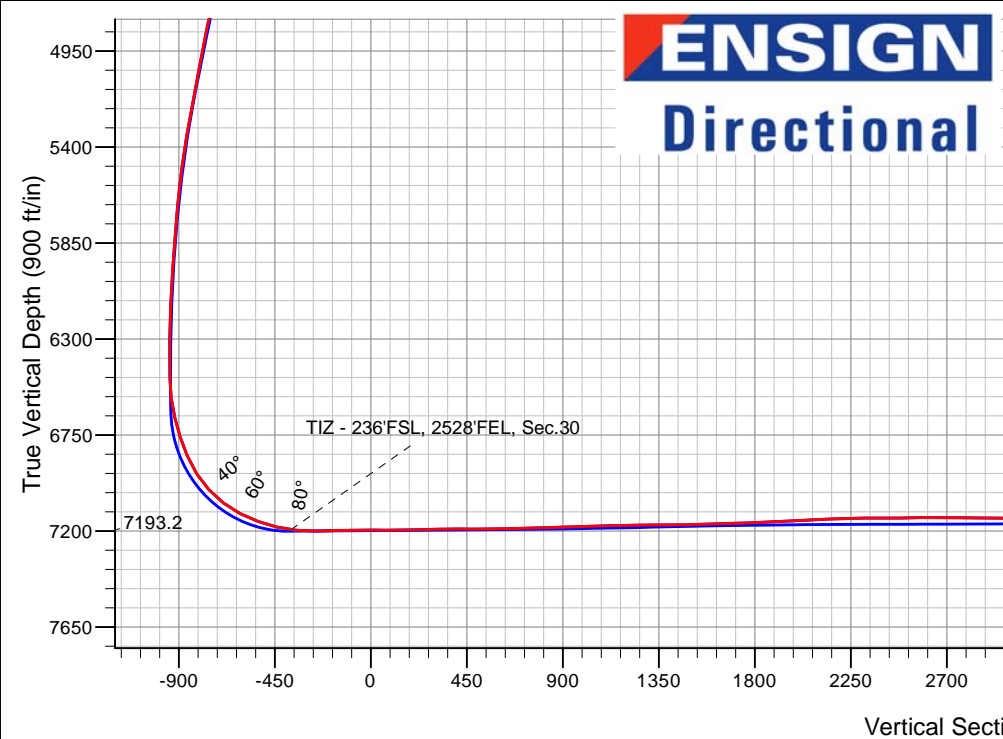
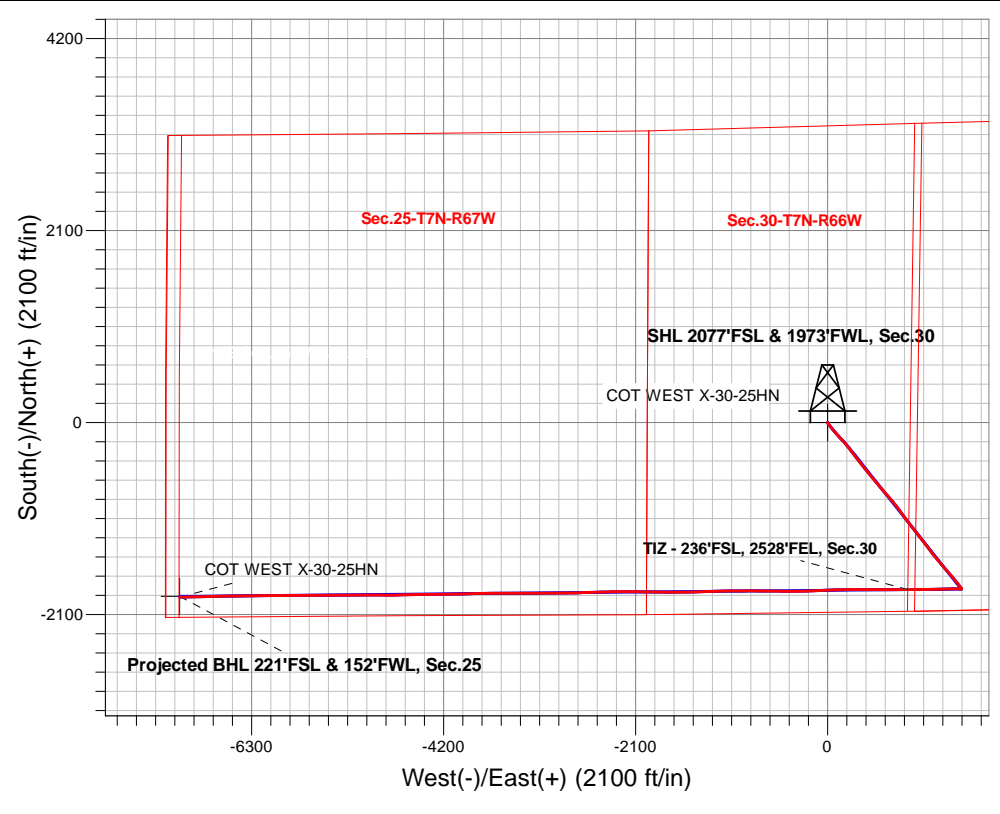
Surface Location: COT 30J Pad Sec.30-T7N-R66W  
 North American Datum 1983 , US State Plane 1983, Colorado Northern Zone  
 Ground Elevation: 4946.0

+N/-S	+E/-W	Northing	Easting	Latitude	Longitude	Slot
0.0	0.0	1441643.11	3187616.83	40.543750	-104.824918	

Original Well Elev WELL @ 4971.0ft (Original Well Elev)

## FINAL SURVEY

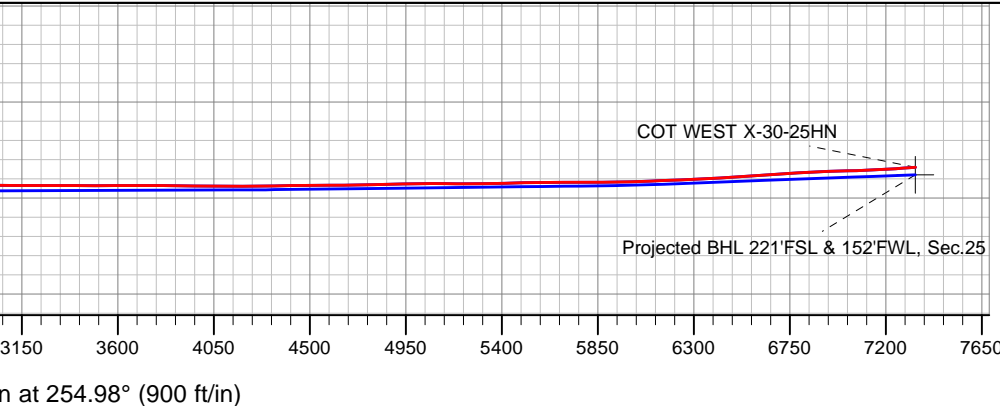
**Projected Bottom Hole Location**  
**15,966'MD 7056'TVD 1911'S & 7086'W of SHL**  
**93.74 degree Incl @ 268.43 degree AZM**



COT 30J Pad Sec.30-T7N-R66W  
 COT WEST X-30-25HN  
 COT WEST X-30-25HN Wellbore #1  
 7:13, March 09 2020

ANNOTATIONS		
TVD	MD	Annotation
7193.2	7996.8	TIZ - 236'FSL, 2528'FEL, Sec.30

LEGEND	
	COT WEST X-30-25HN, COT WEST X-30-25HN Wellbore #1, Plan #3 (2-09-20) V0
	COT WEST X-30-25HN Wellbore #1
	Survey #1





# **Bayswater Exploration & Production, LLC**

**SEC.30-T7N-R66W**

**COT 30J Pad Sec.30-T7N-R66W**

**COT WEST X-30-25HN**

**COT WEST X-30-25HN Wellbore #1**

**Survey: Survey #1**

## **Standard Survey Report**

**09 March, 2020**



<b>Company:</b>	Bayswater Exploration & Production, LLC	<b>Local Co-ordinate Reference:</b>	Well COT WEST X-30-25HN
<b>Project:</b>	SEC.30-T7N-R66W	<b>TVD Reference:</b>	WELL @ 4971.0ft (Original Well Elev)
<b>Site:</b>	COT 30J Pad Sec.30-T7N-R66W	<b>MD Reference:</b>	WELL @ 4971.0ft (Original Well Elev)
<b>Well:</b>	COT WEST X-30-25HN	<b>North Reference:</b>	True
<b>Wellbore:</b>	COT WEST X-30-25HN Wellbore #1	<b>Survey Calculation Method:</b>	Minimum Curvature
<b>Design:</b>	COT WEST X-30-25HN Wellbore #1	<b>Database:</b>	US_EDM

<b>Project</b>	SEC.30-T7N-R66W, Weld County, CO		
<b>Map System:</b>	US State Plane 1983	<b>System Datum:</b>	Mean Sea Level
<b>Geo Datum:</b>	North American Datum 1983		Using Well Reference Point
<b>Map Zone:</b>	Colorado Northern Zone		Using geodetic scale factor

<b>Site</b>	COT 30J Pad Sec.30-T7N-R66W				
<b>Site Position:</b>		<b>Northing:</b>	1,441,808.15 usft	<b>Latitude:</b>	40.544203
<b>From:</b>	Lat/Long	<b>Easting:</b>	3,187,616.69 usft	<b>Longitude:</b>	-104.824914
<b>Position Uncertainty:</b>	0.0 ft	<b>Slot Radius:</b>	13-3/16 "	<b>Grid Convergence:</b>	0.44 °

<b>Well</b>	COT WEST X-30-25HN					
<b>Well Position</b>	<b>+N/-S</b>	0.0 ft	<b>Northing:</b>	1,441,643.11 usft	<b>Latitude:</b>	40.543750
	<b>+E/-W</b>	0.0 ft	<b>Easting:</b>	3,187,616.84 usft	<b>Longitude:</b>	-104.824918
<b>Position Uncertainty</b>		0.0 ft	<b>Wellhead Elevation:</b>	0.0 ft	<b>Ground Level:</b>	4,946.0 ft

<b>Wellbore</b>	COT WEST X-30-25HN Wellbore #1				
<b>Magnetics</b>	<b>Model Name</b>	<b>Sample Date</b>	<b>Declination (°)</b>	<b>Dip Angle (°)</b>	<b>Field Strength (nT)</b>
	HDGM	1/29/2020	7.92	66.88	52,234

<b>Design</b>	COT WEST X-30-25HN Wellbore #1				
<b>Audit Notes:</b>					
<b>Version:</b>	1.0	<b>Phase:</b>	ACTUAL	<b>Tie On Depth:</b>	0.0
<b>Vertical Section:</b>	<b>Depth From (TVD) (ft)</b>	<b>+N/-S (ft)</b>	<b>+E/-W (ft)</b>	<b>Direction (°)</b>	
	0.0	0.0	0.0	254.98	

<b>Survey Program</b>	<b>Date</b>	3/9/2020			
<b>From (ft)</b>	<b>To (ft)</b>	<b>Survey (Wellbore)</b>	<b>Tool Name</b>	<b>Description</b>	
247.0	15,966.0	Survey #1 (COT WEST X-30-25HN Wellbo	MWD	MWD - Standard	

<b>Survey</b>										
<b>Measured Depth (ft)</b>	<b>Inclination (°)</b>	<b>Azimuth (°)</b>	<b>Vertical Depth (ft)</b>	<b>+N/-S (ft)</b>	<b>+E/-W (ft)</b>	<b>Vertical Section (ft)</b>	<b>Dogleg Rate (°/100usft)</b>	<b>Build Rate (°/100usft)</b>	<b>Turn Rate (°/100usft)</b>	
0.0	0.00	0.00	0.0	0.0	0.0	0.0	0.00	0.00	0.00	
247.0	0.18	198.99	247.0	-0.4	-0.1	0.2	0.07	0.07	0.00	
341.0	0.79	174.74	341.0	-1.2	-0.1	0.4	0.67	0.65	-25.80	
436.0	1.93	155.05	436.0	-3.3	0.6	0.2	1.28	1.20	-20.73	
531.0	3.52	149.42	530.9	-7.2	2.8	-0.8	1.70	1.67	-5.93	
625.0	6.16	147.31	624.5	-13.9	7.0	-3.1	2.81	2.81	-2.24	
719.0	9.32	140.99	717.6	-24.1	14.5	-7.7	3.48	3.36	-6.72	
814.0	12.22	139.23	811.0	-37.7	25.9	-15.2	3.07	3.05	-1.85	
909.0	14.33	144.33	903.4	-54.9	39.3	-23.8	2.54	2.22	5.37	
1,004.0	13.98	141.16	995.5	-73.4	53.4	-32.5	0.90	-0.37	-3.34	

<b>Company:</b>	Bayswater Exploration & Production, LLC	<b>Local Co-ordinate Reference:</b>	Well COT WEST X-30-25HN
<b>Project:</b>	SEC.30-T7N-R66W	<b>TVD Reference:</b>	WELL @ 4971.0ft (Original Well Elev)
<b>Site:</b>	COT 30J Pad Sec.30-T7N-R66W	<b>MD Reference:</b>	WELL @ 4971.0ft (Original Well Elev)
<b>Well:</b>	COT WEST X-30-25HN	<b>North Reference:</b>	True
<b>Wellbore:</b>	COT WEST X-30-25HN Wellbore #1	<b>Survey Calculation Method:</b>	Minimum Curvature
<b>Design:</b>	COT WEST X-30-25HN Wellbore #1	<b>Database:</b>	US_EDM

Survey										
Measured Depth (ft)	Inclination (°)	Azimuth (°)	Vertical Depth (ft)	+N/-S (ft)	+E/-W (ft)	Vertical Section (ft)	Dogleg Rate (°/100usft)	Build Rate (°/100usft)	Turn Rate (°/100usft)	
1,099.0	15.04	137.30	1,087.5	-91.4	68.9	-42.9	1.51	1.12	-4.06	
1,194.0	17.06	140.99	1,178.8	-111.2	86.1	-54.3	2.38	2.13	3.88	
1,288.0	17.50	139.76	1,268.6	-132.7	103.9	-65.9	0.61	0.47	-1.31	
1,383.0	17.59	135.89	1,359.1	-154.0	123.1	-79.0	1.23	0.09	-4.07	
1,488.0	17.50	136.42	1,459.3	-176.8	145.0	-94.2	0.17	-0.09	0.50	
1,663.0	18.55	138.70	1,625.7	-216.8	181.5	-119.1	0.72	0.60	1.30	
1,758.0	21.02	142.04	1,715.1	-241.6	202.0	-132.5	2.86	2.60	3.52	
1,853.0	22.69	141.34	1,803.2	-269.3	223.9	-146.5	1.78	1.76	-0.74	
1,947.0	24.80	139.58	1,889.3	-298.5	248.0	-162.2	2.37	2.24	-1.87	
2,042.0	26.91	142.39	1,974.8	-330.7	274.1	-179.0	2.57	2.22	2.96	
2,136.0	27.08	143.10	2,058.5	-364.6	299.9	-195.1	0.39	0.18	0.76	
2,230.0	26.73	142.92	2,142.3	-398.6	325.5	-211.1	0.38	-0.37	-0.19	
2,325.0	28.49	143.27	2,226.5	-433.8	351.9	-227.5	1.86	1.85	0.37	
2,419.0	28.31	144.15	2,309.2	-469.8	378.4	-243.7	0.48	-0.19	0.94	
2,514.0	27.79	140.28	2,393.1	-505.1	405.7	-261.0	1.99	-0.55	-4.07	
2,609.0	27.08	140.63	2,477.4	-538.9	433.6	-279.1	0.77	-0.75	0.37	
2,703.0	26.20	140.63	2,561.4	-571.5	460.3	-296.5	0.94	-0.94	0.00	
2,798.0	27.35	139.93	2,646.2	-604.4	487.7	-314.4	1.26	1.21	-0.74	
2,892.0	26.64	139.93	2,730.0	-637.0	515.2	-332.5	0.76	-0.76	0.00	
2,986.0	28.58	139.58	2,813.3	-670.3	543.3	-351.0	2.07	2.06	-0.37	
3,081.0	28.40	139.93	2,896.7	-704.9	572.6	-370.3	0.26	-0.19	0.37	
3,176.0	27.08	138.17	2,980.8	-738.3	601.5	-389.7	1.64	-1.39	-1.85	
3,270.0	27.61	138.70	3,064.3	-770.6	630.2	-408.9	0.62	0.56	0.56	
3,387.0	26.12	138.17	3,168.7	-810.2	665.3	-432.6	1.29	-1.27	-0.45	
3,482.0	27.61	141.34	3,253.4	-842.9	693.0	-450.8	2.18	1.57	3.34	
3,576.0	25.85	139.58	3,337.4	-875.5	719.9	-468.4	2.05	-1.87	-1.87	
3,671.0	27.17	143.45	3,422.4	-908.7	746.2	-485.2	2.29	1.39	4.07	
3,766.0	26.03	141.69	3,507.4	-942.5	772.1	-501.4	1.46	-1.20	-1.85	
3,860.0	26.29	145.03	3,591.7	-975.8	796.8	-516.7	1.59	0.28	3.55	
3,955.0	28.31	143.80	3,676.1	-1,011.2	822.1	-532.0	2.21	2.13	-1.29	
4,049.0	26.38	142.74	3,759.6	-1,045.8	847.9	-547.9	2.12	-2.05	-1.13	
4,144.0	27.79	143.27	3,844.2	-1,080.3	874.0	-564.1	1.51	1.48	0.56	
4,238.0	28.05	142.57	3,927.3	-1,115.5	900.5	-580.6	0.45	0.28	-0.74	
4,332.0	28.40	141.69	4,010.1	-1,150.5	927.8	-597.9	0.58	0.37	-0.94	
4,427.0	28.31	142.57	4,093.7	-1,186.2	955.5	-615.4	0.45	-0.09	0.93	
4,522.0	28.14	141.69	4,177.4	-1,221.6	983.1	-632.9	0.47	-0.18	-0.93	
4,616.0	26.91	141.87	4,260.8	-1,255.8	1,010.0	-650.0	1.31	-1.31	0.19	
4,711.0	26.91	141.87	4,345.5	-1,289.6	1,036.5	-666.9	0.00	0.00	0.00	
4,806.0	28.93	142.74	4,429.4	-1,324.8	1,063.7	-684.0	2.17	2.13	0.92	
4,900.0	27.70	142.57	4,512.2	-1,360.2	1,090.7	-700.9	1.31	-1.31	-0.18	
4,995.0	26.82	141.69	4,596.6	-1,394.6	1,117.4	-717.8	1.02	-0.93	-0.93	
5,090.0	28.75	143.10	4,680.7	-1,429.7	1,144.4	-734.8	2.15	2.03	1.48	
5,184.0	27.26	141.34	4,763.7	-1,464.6	1,171.5	-751.9	1.81	-1.59	-1.87	
5,278.0	25.32	140.28	4,847.9	-1,496.8	1,197.8	-768.9	2.12	-2.06	-1.13	

<b>Company:</b>	Bayswater Exploration & Production, LLC	<b>Local Co-ordinate Reference:</b>	Well COT WEST X-30-25HN
<b>Project:</b>	SEC.30-T7N-R66W	<b>TVD Reference:</b>	WELL @ 4971.0ft (Original Well Elev)
<b>Site:</b>	COT 30J Pad Sec.30-T7N-R66W	<b>MD Reference:</b>	WELL @ 4971.0ft (Original Well Elev)
<b>Well:</b>	COT WEST X-30-25HN	<b>North Reference:</b>	True
<b>Wellbore:</b>	COT WEST X-30-25HN Wellbore #1	<b>Survey Calculation Method:</b>	Minimum Curvature
<b>Design:</b>	COT WEST X-30-25HN Wellbore #1	<b>Database:</b>	US_EDM

Survey										
Measured Depth (ft)	Inclination (°)	Azimuth (°)	Vertical Depth (ft)	+N/-S (ft)	+E/-W (ft)	Vertical Section (ft)	Dogleg Rate (°/100usft)	Build Rate (°/100usft)	Turn Rate (°/100usft)	
5,373.0	25.15	138.00	4,933.9	-1,527.5	1,224.3	-786.6	1.04	-0.18	-2.40	
5,468.0	24.45	141.51	5,020.1	-1,557.9	1,250.0	-803.5	1.72	-0.74	3.69	
5,563.0	23.74	140.28	5,106.8	-1,588.0	1,274.5	-819.4	0.92	-0.75	-1.29	
5,657.0	22.86	138.53	5,193.2	-1,616.2	1,298.6	-835.4	1.19	-0.94	-1.86	
5,751.0	21.19	137.65	5,280.3	-1,642.4	1,322.2	-851.3	1.81	-1.78	-0.94	
5,846.0	19.52	135.71	5,369.4	-1,666.5	1,344.8	-867.0	1.90	-1.76	-2.04	
5,940.0	18.03	140.99	5,458.4	-1,689.0	1,365.0	-880.6	2.40	-1.59	5.62	
6,035.0	16.62	139.05	5,549.1	-1,710.7	1,383.1	-892.5	1.60	-1.48	-2.04	
6,130.0	14.95	145.03	5,640.5	-1,731.0	1,399.0	-902.6	2.45	-1.76	6.29	
6,224.0	13.45	145.03	5,731.6	-1,749.9	1,412.3	-910.5	1.60	-1.60	0.00	
6,318.0	12.22	142.57	5,823.3	-1,766.8	1,424.6	-918.0	1.43	-1.31	-2.62	
6,413.0	9.76	142.22	5,916.5	-1,781.1	1,435.6	-925.0	2.59	-2.59	-0.37	
6,508.0	8.88	139.58	6,010.3	-1,793.1	1,445.3	-931.2	1.03	-0.93	-2.78	
6,603.0	6.77	140.11	6,104.4	-1,803.0	1,453.7	-936.7	2.22	-2.22	0.56	
6,697.0	5.01	141.16	6,197.9	-1,810.4	1,459.8	-940.7	1.88	-1.87	1.12	
6,792.0	3.87	159.80	6,292.6	-1,816.6	1,463.5	-942.7	1.92	-1.20	19.62	
6,887.0	1.32	157.51	6,387.5	-1,820.7	1,465.0	-943.1	2.69	-2.68	-2.41	
6,981.0	1.14	262.28	6,481.5	-1,821.8	1,464.5	-942.3	2.08	-0.19	111.46	
7,076.0	7.65	276.16	6,576.1	-1,821.2	1,457.3	-935.5	6.89	6.85	14.61	
7,171.0	13.81	272.82	6,669.4	-1,820.0	1,439.6	-918.8	6.51	6.48	-3.52	
7,266.0	18.73	272.30	6,760.6	-1,818.8	1,413.1	-893.4	5.18	5.18	-0.55	
7,360.0	24.27	268.25	6,848.0	-1,818.8	1,378.6	-860.2	6.10	5.89	-4.31	
7,455.0	32.36	269.31	6,931.6	-1,819.7	1,333.6	-816.5	8.53	8.52	1.12	
7,550.0	43.62	268.78	7,006.3	-1,820.7	1,275.3	-759.8	11.86	11.85	-0.56	
7,644.0	54.08	268.25	7,068.1	-1,822.6	1,204.6	-691.1	11.14	11.13	-0.56	
7,739.0	62.61	267.37	7,117.9	-1,825.7	1,123.9	-612.3	9.01	8.98	-0.93	
7,833.0	70.79	270.54	7,155.1	-1,827.2	1,037.6	-528.6	9.24	8.70	3.37	
7,928.0	77.38	269.31	7,181.1	-1,827.3	946.3	-440.4	7.05	6.94	-1.29	
7,996.8	82.35	269.18	7,193.2	-1,828.2	878.6	-374.8	7.22	7.22	-0.19	
<b>TIZ - 236°FSL, 2528°FEL, Sec.30</b>										
8,023.0	84.24	269.13	7,196.3	-1,828.6	852.6	-349.6	7.22	7.22	-0.19	
8,117.0	91.01	270.71	7,200.2	-1,828.7	758.8	-258.9	7.40	7.20	1.68	
8,212.0	92.15	269.83	7,197.6	-1,828.3	663.8	-167.3	1.52	1.20	-0.93	
8,307.0	89.78	270.19	7,196.0	-1,828.3	568.8	-75.5	2.52	-2.49	0.38	
8,401.0	90.84	270.01	7,195.4	-1,828.1	474.8	15.2	1.14	1.13	-0.19	
8,495.0	88.81	271.42	7,195.7	-1,826.9	380.8	105.7	2.63	-2.16	1.50	
8,590.0	92.15	270.36	7,194.9	-1,825.5	285.9	197.0	3.69	3.52	-1.12	
8,684.0	91.98	268.78	7,191.5	-1,826.2	191.9	287.9	1.69	-0.18	-1.68	
8,779.0	89.43	266.85	7,190.4	-1,829.8	97.0	380.5	3.37	-2.68	-2.03	
8,873.0	90.48	267.37	7,190.5	-1,834.5	3.1	472.4	1.25	1.12	0.55	
8,967.0	90.57	266.67	7,189.6	-1,839.4	-90.7	564.3	0.75	0.10	-0.74	
9,061.0	91.54	268.96	7,187.9	-1,843.0	-184.6	656.0	2.65	1.03	2.44	
9,156.0	91.89	268.78	7,185.0	-1,844.9	-279.6	748.2	0.41	0.37	-0.19	

<b>Company:</b>	Bayswater Exploration & Production, LLC	<b>Local Co-ordinate Reference:</b>	Well COT WEST X-30-25HN
<b>Project:</b>	SEC.30-T7N-R66W	<b>TVD Reference:</b>	WELL @ 4971.0ft (Original Well Elev)
<b>Site:</b>	COT 30J Pad Sec.30-T7N-R66W	<b>MD Reference:</b>	WELL @ 4971.0ft (Original Well Elev)
<b>Well:</b>	COT WEST X-30-25HN	<b>North Reference:</b>	True
<b>Wellbore:</b>	COT WEST X-30-25HN Wellbore #1	<b>Survey Calculation Method:</b>	Minimum Curvature
<b>Design:</b>	COT WEST X-30-25HN Wellbore #1	<b>Database:</b>	US_EDM

Survey										
Measured Depth (ft)	Inclination (°)	Azimuth (°)	Vertical Depth (ft)	+N/-S (ft)	+E/-W (ft)	Vertical Section (ft)	Dogleg Rate (°/100usft)	Build Rate (°/100usft)	Turn Rate (°/100usft)	
9,251.0	90.75	270.71	7,182.8	-1,845.3	-374.5	840.0	2.36	-1.20	2.03	
9,345.0	91.28	271.06	7,181.2	-1,843.8	-468.5	930.4	0.68	0.56	0.37	
9,440.0	91.80	270.36	7,178.6	-1,842.7	-563.5	1,021.8	0.92	0.55	-0.74	
9,535.0	93.12	270.01	7,174.5	-1,842.4	-658.4	1,113.4	1.44	1.39	-0.37	
9,629.0	89.96	270.71	7,172.0	-1,841.8	-752.3	1,204.0	3.44	-3.36	0.74	
9,723.0	90.13	269.66	7,171.9	-1,841.5	-846.3	1,294.7	1.13	0.18	-1.12	
9,818.0	90.48	270.01	7,171.4	-1,841.7	-941.3	1,386.5	0.52	0.37	0.37	
9,913.0	91.45	270.01	7,169.8	-1,841.7	-1,036.3	1,478.2	1.02	1.02	0.00	
10,008.0	91.54	269.48	7,167.3	-1,842.1	-1,131.3	1,570.1	0.57	0.09	-0.56	
10,101.0	91.71	267.72	7,164.7	-1,844.4	-1,224.2	1,660.4	1.90	0.18	-1.89	
10,196.0	91.36	266.67	7,162.2	-1,849.1	-1,319.1	1,753.2	1.16	-0.37	-1.11	
10,290.0	92.86	269.31	7,158.7	-1,852.4	-1,412.9	1,844.7	3.23	1.60	2.81	
10,385.0	93.39	268.25	7,153.5	-1,854.4	-1,507.8	1,936.8	1.25	0.56	-1.12	
10,479.0	92.68	270.19	7,148.5	-1,855.7	-1,601.6	2,027.8	2.19	-0.76	2.06	
10,573.0	91.89	268.96	7,144.8	-1,856.3	-1,695.5	2,118.7	1.55	-0.84	-1.31	
10,668.0	92.42	271.24	7,141.2	-1,856.2	-1,790.5	2,210.4	2.46	0.56	2.40	
10,763.0	90.04	271.24	7,139.2	-1,854.1	-1,885.4	2,301.5	2.51	-2.51	0.00	
10,858.0	90.22	270.71	7,139.0	-1,852.5	-1,980.4	2,392.9	0.59	0.19	-0.56	
10,953.0	90.57	269.83	7,138.3	-1,852.1	-2,075.4	2,484.5	1.00	0.37	-0.93	
11,047.0	91.28	270.54	7,136.8	-1,851.8	-2,169.4	2,575.2	1.07	0.76	0.76	
11,142.0	89.34	269.83	7,136.3	-1,851.5	-2,264.4	2,666.8	2.17	-2.04	-0.75	
11,237.0	89.34	269.48	7,137.4	-1,852.0	-2,359.4	2,758.7	0.37	0.00	-0.37	
11,331.0	89.43	268.25	7,138.4	-1,853.9	-2,453.3	2,850.0	1.31	0.10	-1.31	
11,426.0	89.43	268.25	7,139.3	-1,856.8	-2,548.3	2,942.4	0.00	0.00	0.00	
11,521.0	89.43	267.37	7,140.3	-1,860.4	-2,643.2	3,035.1	0.93	0.00	-0.93	
11,616.0	89.96	268.60	7,140.8	-1,863.8	-2,738.2	3,127.6	1.41	0.56	1.29	
11,710.0	90.13	270.19	7,140.7	-1,864.7	-2,832.2	3,218.7	1.70	0.18	1.69	
11,805.0	89.52	269.31	7,141.0	-1,865.2	-2,927.1	3,310.5	1.13	-0.64	-0.93	
11,899.0	89.69	269.81	7,141.7	-1,865.9	-3,021.1	3,401.5	0.56	0.18	0.53	
11,994.0	89.96	269.31	7,141.9	-1,866.6	-3,116.1	3,493.4	0.60	0.28	-0.53	
12,088.0	90.40	269.13	7,141.6	-1,867.9	-3,210.1	3,584.5	0.51	0.47	-0.19	
12,182.0	89.87	270.71	7,141.4	-1,868.0	-3,304.1	3,675.4	1.77	-0.56	1.68	
12,276.0	90.40	270.36	7,141.2	-1,867.1	-3,398.1	3,765.9	0.68	0.56	-0.37	
12,371.0	89.25	269.83	7,141.5	-1,867.0	-3,493.1	3,857.6	1.33	-1.21	-0.56	
12,466.0	89.16	269.83	7,142.8	-1,867.3	-3,588.1	3,949.5	0.09	-0.09	0.00	
12,561.0	89.43	269.48	7,144.0	-1,867.8	-3,683.1	4,041.3	0.47	0.28	-0.37	
12,655.0	90.04	269.13	7,144.4	-1,869.0	-3,777.1	4,132.4	0.75	0.65	-0.37	
12,749.0	90.57	268.43	7,143.9	-1,871.0	-3,871.1	4,223.7	0.93	0.56	-0.74	
12,844.0	90.75	268.43	7,142.8	-1,873.6	-3,966.0	4,316.1	0.19	0.19	0.00	
12,938.0	90.75	267.55	7,141.6	-1,876.9	-4,060.0	4,407.7	0.94	0.00	-0.94	
13,033.0	90.40	269.48	7,140.6	-1,879.3	-4,154.9	4,500.0	2.06	-0.37	2.03	
13,127.0	90.48	269.31	7,139.9	-1,880.3	-4,248.9	4,591.1	0.20	0.09	-0.18	
13,222.0	90.84	270.36	7,138.8	-1,880.6	-4,343.9	4,682.9	1.17	0.38	1.11	
13,316.0	90.92	269.66	7,137.4	-1,880.6	-4,437.9	4,773.6	0.75	0.09	-0.74	

<b>Company:</b>	Bayswater Exploration & Production, LLC	<b>Local Co-ordinate Reference:</b>	Well COT WEST X-30-25HN
<b>Project:</b>	SEC.30-T7N-R66W	<b>TVD Reference:</b>	WELL @ 4971.0ft (Original Well Elev)
<b>Site:</b>	COT 30J Pad Sec.30-T7N-R66W	<b>MD Reference:</b>	WELL @ 4971.0ft (Original Well Elev)
<b>Well:</b>	COT WEST X-30-25HN	<b>North Reference:</b>	True
<b>Wellbore:</b>	COT WEST X-30-25HN Wellbore #1	<b>Survey Calculation Method:</b>	Minimum Curvature
<b>Design:</b>	COT WEST X-30-25HN Wellbore #1	<b>Database:</b>	US_EDM

Measured Depth (ft)	Inclination (°)	Azimuth (°)	Vertical Depth (ft)	+N/-S (ft)	+E/-W (ft)	Vertical Section (ft)	Dogleg Rate (°/100usft)	Build Rate (°/100usft)	Turn Rate (°/100usft)
13,410.0	91.10	268.96	7,135.7	-1,881.7	-4,531.9	4,864.7	0.77	0.19	-0.74
13,504.0	91.45	268.43	7,133.6	-1,883.9	-4,625.8	4,956.0	0.68	0.37	-0.56
13,598.0	90.57	267.90	7,132.0	-1,886.9	-4,719.8	5,047.5	1.09	-0.94	-0.56
13,693.0	88.90	270.36	7,132.4	-1,888.3	-4,814.7	5,139.6	3.13	-1.76	2.59
13,788.0	89.96	270.54	7,133.4	-1,887.6	-4,909.7	5,231.2	1.13	1.12	0.19
13,882.0	91.19	269.66	7,132.4	-1,887.4	-5,003.7	5,321.9	1.61	1.31	-0.94
13,977.0	91.45	269.31	7,130.2	-1,888.3	-5,098.7	5,413.9	0.46	0.27	-0.37
14,071.0	91.80	268.78	7,127.6	-1,889.8	-5,192.6	5,505.0	0.68	0.37	-0.56
14,166.0	89.96	270.19	7,126.1	-1,890.7	-5,287.6	5,597.0	2.44	-1.94	1.48
14,260.0	89.96	270.54	7,126.2	-1,890.1	-5,381.6	5,687.6	0.37	0.00	0.37
14,355.0	90.04	270.01	7,126.2	-1,889.6	-5,476.6	5,779.2	0.56	0.08	-0.56
14,450.0	89.87	269.83	7,126.2	-1,889.8	-5,571.6	5,871.0	0.26	-0.18	-0.19
14,545.0	92.15	269.83	7,124.6	-1,890.0	-5,666.6	5,962.8	2.40	2.40	0.00
14,639.0	91.80	270.19	7,121.3	-1,890.0	-5,760.5	6,053.5	0.53	-0.37	0.38
14,734.0	91.98	270.19	7,118.2	-1,889.7	-5,855.5	6,145.2	0.19	0.19	0.00
14,829.0	91.89	269.31	7,115.0	-1,890.1	-5,950.4	6,237.0	0.93	-0.09	-0.93
14,924.0	93.39	269.66	7,110.6	-1,891.0	-6,045.3	6,328.8	1.62	1.58	0.37
15,018.0	93.03	269.31	7,105.3	-1,891.8	-6,139.2	6,419.7	0.53	-0.38	-0.37
15,113.0	93.39	269.13	7,100.0	-1,893.1	-6,234.0	6,511.6	0.42	0.38	-0.19
15,208.0	93.30	268.43	7,094.5	-1,895.1	-6,328.8	6,603.7	0.74	-0.09	-0.74
15,302.0	94.09	267.72	7,088.4	-1,898.3	-6,422.6	6,695.1	1.13	0.84	-0.76
15,397.0	94.44	268.96	7,081.4	-1,901.0	-6,517.3	6,787.3	1.35	0.37	1.31
15,492.0	91.54	270.19	7,076.4	-1,901.7	-6,612.1	6,879.1	3.32	-3.05	1.29
15,587.0	91.36	269.13	7,074.0	-1,902.3	-6,707.1	6,970.9	1.13	-0.19	-1.12
15,682.0	92.15	268.78	7,071.1	-1,904.0	-6,802.0	7,063.1	0.91	0.83	-0.37
15,776.0	92.95	268.96	7,066.9	-1,905.9	-6,895.9	7,154.2	0.87	0.85	0.19
15,871.0	93.30	268.43	7,061.7	-1,908.0	-6,990.8	7,246.4	0.67	0.37	-0.56
15,966.0	93.74	268.43	7,059.6	-1,909.0	-7,025.7	7,280.4	1.26	1.26	0.00
15,966.0	93.74	268.43	7,055.7	-1,910.6	-7,085.5	7,338.6	0.00	0.00	0.00

Target Name	Dip Angle (°)	Dip Dir. (°)	TVD (ft)	+N/-S (ft)	+E/-W (ft)	Northing (usft)	Easting (usft)	Latitude	Longitude
SHL 2077'FSL & 1973'F1 - hit/miss target - Shape - Point	0.00	0.00	1.0	0.0	0.0	1,441,643.12	3,187,616.84	40.543750	-104.824918
Projected BHL 221'FSL i - survey misses target center by 36.5ft at 15965.4ft MD (7055.7 TVD, -1910.6 N, -7084.9 E) - Point	0.00	0.00	7,091.0	-1,901.8	-7,087.5	1,439,687.45	3,180,544.30	40.538527	-104.850417

<b>Company:</b>	Bayswater Exploration & Production, LLC	<b>Local Co-ordinate Reference:</b>	Well COT WEST X-30-25HN
<b>Project:</b>	SEC.30-T7N-R66W	<b>TVD Reference:</b>	WELL @ 4971.0ft (Original Well Elev)
<b>Site:</b>	COT 30J Pad Sec.30-T7N-R66W	<b>MD Reference:</b>	WELL @ 4971.0ft (Original Well Elev)
<b>Well:</b>	COT WEST X-30-25HN	<b>North Reference:</b>	True
<b>Wellbore:</b>	COT WEST X-30-25HN Wellbore #1	<b>Survey Calculation Method:</b>	Minimum Curvature
<b>Design:</b>	COT WEST X-30-25HN Wellbore #1	<b>Database:</b>	US_EDM

Survey Annotations				
Measured Depth (ft)	Vertical Depth (ft)	Local Coordinates		Comment
		+N/-S (ft)	+E/-W (ft)	
7,996.8	7,193.2	-1,828.2	878.6	TIZ - 236'FSL, 2528'FEL, Sec.30

Checked By: \_\_\_\_\_ Approved By: \_\_\_\_\_ Date: \_\_\_\_\_