

BJ Cementing Treatment Report

SERVICE SUPERVISOR	Hector Montoya	RIG	True 38
DISTRICT	Cheyenne, WY	COUNTY	WELD
SERVICE	Cementing	STATE / PROVINCE	CO

WELL GEOMETRY

TYPE	ID (in)	OD (in)	WEIGHT (lb/ft)	MD (ft)	TVD (ft)	EXCESS (%)
Open Hole	8.50	0.00	0.00	15,966.00	7,199.00	3.50
Previous Casing	8.92	9.63	36.00	1,539.00	1,539.00	
Casing	4.78	5.50	20.00	15,954.00	7,199.00	

HARDWARE

Bottom Plug Used?	No	Landing Collar Depth (ft)	15,938
Top Plug Used?	Yes	Max Casing Pressure - Rated (psi)	11080.00
Top Plug Provided By	Non BJ	Max Casing Pressure - Operated (psi)	8864.00
Top Plug Size	5.500	Job Pumped Through	Manifold
Centralizers Used	Yes	Top Connection Thread	BTC
Centralizers Quantity	195.00	Top Connection Size	5.5
Centralizers Type	Rigid		

CIRCULATION PRIOR TO JOB

Well Circulated By	Rig	PV Mud Out	17
Circulation Prior to Job	Yes	YP Mud In	8
Circulation Time (min)	180.00	YP Mud Out	8
Circulation Rate (bpm)	6.00	Solids Present at End of Circulation	No
Circulation Volume (bbls)	1080.00	10 sec SGS	7
Lost Circulation Prior to Cement Job	No	10 min SGS	12
Mud Density In (ppg)	9.70	30 min SGS	14
Mud Density Out (ppg)	9.70	Flare Prior to / during the Cement Job	No
PV Mud In	17	Gas Present	No

Client: Bayswater Exploration & Production, LLC

Well: COT WEST #X-30-25HN

Well API: 05-123-50497

Start Date: 3/8/2020

End Date: 3/9/2020



TEMPERATURE

Ambient Temperature (°F)	33.00	Slurry Cement Temperature (°F)	70.00
Mix Water Temperature (°F)	65.00	Flow Line Temperature (°F)	120.00

FLUID DETAILS

FLUID TYPE	FLUID NAME	DENSITY (ppg)	YIELD (Cu Ft/sk)	H ₂ O REQ (gals/sk)	PLN TOP FLD (ft)	LENGTH (ft)	VOL (sk)	VOL (Cu Ft)	VOL (bbls)
Spacer / Pre Flush / Flush	Dye Flush	8.3300			2,451.00				2.0000
Spacer / Pre Flush / Flush	IntegraGuard EZ Spacer	11.5000			0.00				120.0000
Lead Slurry	BJCem P100.3.01C	13.2000	1.8295	9.87	2,500.00	4,719.00	615	1126.0000	200.4000
Tail Slurry	BJCem P50.6.02C	13.5000	1.4774	7.45	7,219.00	8,774.00	1405	2076.0000	369.7000
Displacement 2	Retarded Water w/ Clay Protection & Biocide	8.3331				0.00	0	0.0000	10.0000
Displacement Final	Water w/ Clay Protection & Biocide	8.3331			0.00			0.0000	343.8000

FLUID TYPE	FLUID NAME	COMPONENT	CONCENTRATION	UOM
Spacer / Pre Flush / Flush	Dye Flush	DYE,LIQUID,BLUE	1.0000	GPB
Spacer / Pre Flush / Flush	IntegraGuard EZ Spacer	SPACER SURFACTANT, SS-267	0.7000	GPB
Spacer / Pre Flush / Flush	IntegraGuard EZ Spacer	SAND, S-8, Silica Flour, 200 Mesh	215.0100	PPB
Spacer / Pre Flush / Flush	IntegraGuard EZ Spacer	SPACER SURFACTANT, SS-247	0.7000	GPB
Spacer / Pre Flush / Flush	IntegraGuard EZ Spacer	IntegraGuard GW-86	0.9000	PPB
Lead Slurry	BJCem P100.3.01C	CEMENT, ASTM TYPE III	100.0000	PCT
Lead Slurry	BJCem P100.3.01C	FLUID LOSS, FL-66	0.5000	BWOB
Lead Slurry	BJCem P100.3.01C	FOAM PREVENTER, FP-25	0.3000	BWOB
Lead Slurry	BJCem P100.3.01C	IntegraCare EC-2	3.0000	BWOB
Lead Slurry	BJCem P100.3.01C	IntegraGuard GW-86	0.1000	BWOB
Lead Slurry	BJCem P100.3.01C	RETARDER, SR-20	0.7000	BWOB
Tail Slurry	BJCem P50.6.02C	CEMENT, CLASS G	50.0000	PCT
Tail Slurry	BJCem P50.6.02C	EXTENDER, BENTONITE	2.0000	BWOB
Tail Slurry	BJCem P50.6.02C	IntegraGuard GW-86	0.1000	BWOB
Tail Slurry	BJCem P50.6.02C	FLUID LOSS, FL-66	0.2000	BWOB
Tail Slurry	BJCem P50.6.02C	CEMENT, FLY ASH (ROCKIES)	50.0000	PCT
Tail Slurry	BJCem P50.6.02C	RETARDER, SR-20	0.1000	BWOB
Tail Slurry	BJCem P50.6.02C	FOAM PREVENTER, FP-25	0.3000	BWOB
Displacement 2	Retarded Water w/ Clay Protection & Biocide	ResCare CS-2	0.0800	GPB
Displacement 2	Retarded Water w/ Clay Protection & Biocide	RETARDER, SR-61L	0.1000	GPB
Displacement 2	Retarded Water w/ Clay Protection & Biocide	BIOCIDE, BIOC11139W	0.0100	GPB
Displacement Final	Water w/ Clay Protection & Biocide	BIOCIDE, BIOC11139W	0.0100	GPB
Displacement Final	Water w/ Clay Protection & Biocide	ResCare CS-2	0.0800	GPB

DISPLACEMENT AND END OF JOB SUMMARY

Displaced By	BJ	Amt of Cement Returned / Reversed	0.00
Calculated Displacement Vol (bbls)	353.00	Method Used to Verify Returns	Visual
Actual Displacement Vol (bbls)	353.00	Amt of Spacer to Surface	0.00
Did Float Hold?	Yes	Pressure Left on Casing (psi)	0.00
Bump Plug	Yes	Amt Bled Back After Job	2.50
Bump Plug Pressure (psi)	2900.00	Total Volume Pumped (bbls)	1044.00
Were Returns Planned at Surface	Yes	Top Out Cement Spotted	No
Cement Returns During Job	None	Lost Circulation During Cement Job	No

Client: Bayswater Exploration & Production, LLC

Well: COT WEST #X-30-25HN

Well API: 05-123-50497

Start Date: 3/8/2020

End Date: 3/9/2020



BJ Cementing Event Log

Long String - Cheyenne, WY - Hector Montoya

SEQ	START DATE / TIME	EVENT	DENSITY (ppg)	PUMP RATE (bpm)	PUMP VOL (bbls)	PIPE PRESSURE (psi)	COMMENTS
1	03/08/2020 12:00	Callout					BJ Crew gets called out
2	03/08/2020 14:00	Other (See comment)					Load Up for the job
3	03/08/2020 16:00	Arrive on Location					Crew arrives safely on location
4	03/08/2020 17:00	Rig Up					Rig Up
5	03/08/2020 20:00	STEACS Briefing					BJ Crew and Rig Crew discuss hazards of pumping the job and discuss job procedure
6	03/08/2020 20:15	Other (See comment)					When getting the Field Bins aired the main air supply line blew apart and had to re-rig up the airlines because the main pony motor was not usable.
7	03/08/2020 20:39	Prime Up					Fill Lines
8	03/08/2020 20:43	Pressure Test					Pressure Test to 5000psi
9	03/08/2020 20:46	Pump Spacer	11.5000	5.00	120.00	300.00	Spacer 120bbl at 11.5ppg with surfactants
10	03/08/2020 20:49	Pump Lead Cement	13.2000	7.00	200.00	700.00	Lead 200bbl at 13.2ppg, BJ Cem P100.3.01C 615sks, γ-1.89, GPS-7.45, Mix Water-145bbl
11	03/08/2020 21:17	Pump Tail Cement	13.5000	7.00	369.00	710.00	Tail 369bbl at 13.5ppg, BJ Cem P50.6.02C 1405sks, Y-1.47, GPS-7.45, Mix Water-331. From 9:39pm to 9:42pm we swapped to the Tail Field Bin but pony motor was shut off and the actuators did not have air. Did not shut down, only slowed rate and pumped the rest of Lead while Tail was being brought back up to weight.
12	03/08/2020 22:52	Wash Pumps and Lines					Wash Pumps out tp the pit
13	03/08/2020 23:04	Drop Top Plug					Customer Witnesses Top Plug leave
14	03/08/2020 23:05	Pump Displacement	8.3300	8.00	332.00	1800.00	Total Displacement 353bbl. First 10bbl w. SR-61L, the rest with ResCare and Biocide. Did not get spacer to surface, saw Diesel Pill to Surface at 320bbl away.

Client: Bayswater Exploration & Production, LLC

Well Name / API: COT WEST #X-30-25HN / 05-123-50497

Well 15993
MD:



Quote #: QUO-43231-V9B8K8

Plan #: ORD-25014-S2X7M4

Execution #: EXC-25014-S2X7M402

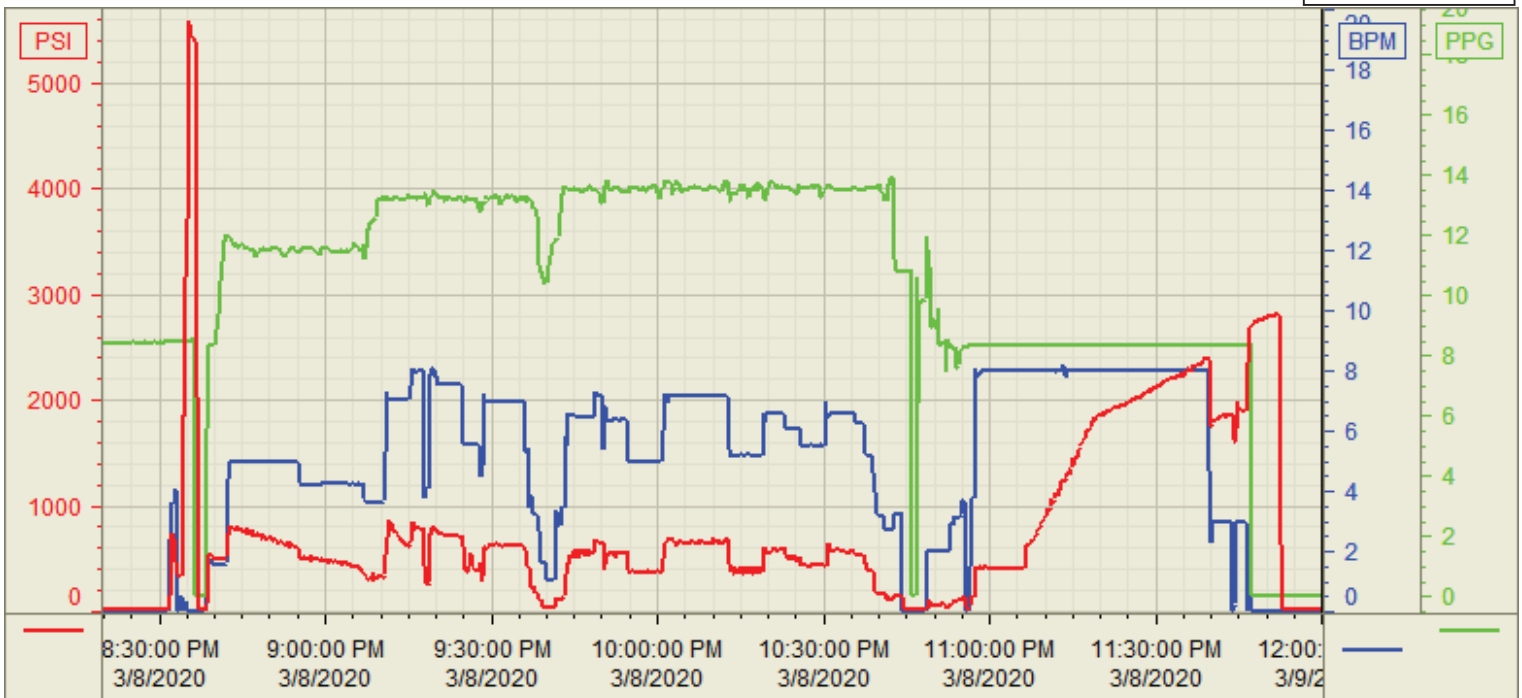
15	03/08/2020 23:47	Pump Displacement	8.3300	3.00	20.00	2100.00	Slow rate last 20bbl to 3bpm to land the plug
16	03/08/2020 23:55	Land Plug				2900.00	Land Plug, Final Circulating Pressure was 2100psi took to 2900psi
17	03/09/2020 00:00	Check Floats					Floats Held. 2.5bbl bac to the truck.
18	03/09/2020 00:03	Rig Down					Rig Down
19	03/09/2020 02:00	Leave Location					Leave location



Customer: BAYSWATER
 Well Number: X-30-25HN
 Lease Info: COT WEST



Print Date/Time
 3/9/2020 12:33:58 AM



	Name	Y value	X value/time stamp	Tag name Y
1	DS - Press (PSI)	16.1 i.	3/9/2020 12:00:00 AM i.	Cementer\DS_DISCHARGE_PRESS_DIAL
2	Recirc - Density (PPG)	0.01	3/9/2020 12:00:02 AM	Cementer\DENSITY_ACTUAL_RATE
3	Combined Rate	0.00	3/9/2020 12:00:02 AM	Cementer\Flow_Combined
4				
5				

Source: Control1 12:33:54 AM