

BJ Cementing Treatment Report

SERVICE SUPERVISOR	Hector Montoya	RIG	True 38
DISTRICT	Cheyenne, WY	COUNTY	WELD
SERVICE	Cementing	STATE / PROVINCE	CO

WELL GEOMETRY

TYPE	ID (in)	OD (in)	WEIGHT (lb/ft)	MD (ft)	TVD (ft)	EXCESS (%)
Open Hole	13.50	0.00	0.00	1,566.00	1,566.00	25.00
Casing	8.92	9.63	36.00	1,556.00	1,556.00	

HARDWARE

Bottom Plug Used?	No	Landing Collar Depth (ft)	1,556
Top Plug Used?	Yes	Max Casing Pressure - Rated (psi)	3520.00
Top Plug Provided By	Non BJ	Max Casing Pressure - Operated (psi)	2860.00
Top Plug Size	9.625	Job Pumped Through	Manifold
Centralizers Used	Yes	Top Connection Thread	LTC
Centralizers Quantity	17.00	Top Connection Size	9.625
Centralizers Type	Bow		

CIRCULATION PRIOR TO JOB

Well Circulated By	Rig	PV Mud In	4
Circulation Prior to Job	Yes	PV Mud Out	4
Circulation Time (min)	60.00	YP Mud In	1
Circulation Rate (bpm)	8.00	YP Mud Out	1
Circulation Volume (bbls)	420.00	Solids Present at End of Circulation	No
Lost Circulation Prior to Cement Job	No	Flare Prior to / during the Cement Job	No
Mud Density In (ppg)	8.80	Gas Present	No
Mud Density Out (ppg)	8.80		

TEMPERATURE

Ambient Temperature (°F)	47.00	Slurry Cement Temperature (°F)	65.00
Mix Water Temperature (°F)	60.00	Flow Line Temperature (°F)	90.00

Client: Bayswater Exploration & Production, LLC

Well: COT WEST #W-30-25HC

Well API: 05-123-50501

Start Date: 1/26/2020

End Date: 1/26/2020



FLUID DETAILS

FLUID TYPE	FLUID NAME	DENSITY (ppg)	YIELD (Cu Ft/sk)	H ₂ O REQ (gals/sk)	PLN TOP FLD (ft)	LENGTH (ft)	VOL (sk)	VOL (Cu Ft)	VOL (bbls)
Spacer / Pre Flush / Flush	Water	8.3337			0.00				20.0000
Lead Slurry	BJCem S100.03.1C	12.0000	2.5298	14.86	0.00	1,030.00	252	638.0000	113.5000
Tail Slurry	BJCem S100.03.1C	12.5000	2.2255	12.59	1,030.00	500.00	145	323.0000	57.5000
Displacement Final	DIRTY DIESEL	8.3337			0.00			0.0000	117.0000

FLUID TYPE	FLUID NAME	COMPONENT	CONCENTRATION	UOM
Spacer / Pre Flush / Flush	Water	Fresh Water	100.0000	PCT
Lead Slurry	BJCem S100.03.1C	CEMENT, ASTM TYPE III	100.0000	PCT
Lead Slurry	BJCem S100.03.1C	IntegraSeal POLI	0.1300	LBS/SK
Lead Slurry	BJCem S100.03.1C	FOAM PREVENTER, FP-25	0.3000	BWOB
Lead Slurry	BJCem S100.03.1C	CEMENT EXTENDER, GYPSUM, A-10	5.0000	BWOB
Lead Slurry	BJCem S100.03.1C	ACCELERATOR, SALT, CHLORIDE, CALCIUM, A-7P, PELLETS	2.0000	LBS/SK
Lead Slurry	BJCem S100.03.1C	Cement Additive, Sodium Metasilicate A-2	2.0000	LBS/SK
Tail Slurry	BJCem S100.03.1C	Cement Additive, Sodium Metasilicate A-2	2.0000	LBS/SK
Tail Slurry	BJCem S100.03.1C	ACCELERATOR, SALT, CHLORIDE, CALCIUM, A-7P, PELLETS	2.0000	LBS/SK
Tail Slurry	BJCem S100.03.1C	CEMENT, ASTM TYPE III	100.0000	PCT
Tail Slurry	BJCem S100.03.1C	CEMENT EXTENDER, GYPSUM, A-10	5.0000	BWOB
Tail Slurry	BJCem S100.03.1C	IntegraSeal POLI	0.1300	LBS/SK
Tail Slurry	BJCem S100.03.1C	FOAM PREVENTER, FP-25	0.3000	BWOB
Displacement Final	DIRTY DIESEL	Fresh Water	100.0000	PCT

DISPLACEMENT AND END OF JOB SUMMARY

Displaced By	BJ	Amt of Cement Returned / Reversed	22.00
Calculated Displacement Vol (bbls)	117.00	Method Used to Verify Returns	Visual
Actual Displacement Vol (bbls)	117.00	Amt of Spacer to Surface	20.00
Did Float Hold?	Yes	Pressure Left on Casing (psi)	0.00
Bump Plug	Yes	Amt Bled Back After Job	1.00
Bump Plug Pressure (psi)	1260.00	Total Volume Pumped (bbls)	305.00
Were Returns Planned at Surface	Yes	Top Out Cement Spotted	No
Cement Returns During Job	Full	Lost Circulation During Cement Job	No

Client: Bayswater Exploration & Production, LLC

Well: COT WEST #W-30-25HC

Well API: 05-123-50501

Start Date: 1/26/2020

End Date: 1/26/2020



BJ Cementing Event Log

Surface - Cheyenne, WY - Hector Montoya

SEQ	START DATE / TIME	EVENT	DENSITY (ppg)	PUMP RATE (bpm)	PUMP VOL (bbls)	PIPE PRESSURE (psi)	COMMENTS
1	01/26/2020 11:00	Callout					BJ Crew gets called out
2	01/26/2020 13:00	Other (See comment)					Load Up
3	01/26/2020 14:00	Arrive on Location					BJ Crew arrives safely on location
4	01/26/2020 15:30	Rig Up					Rig Up
5	01/26/2020 16:00	Other (See comment)					Wait on casing to be ran
6	01/26/2020 18:00	STEACS Briefing					BJ Crew and Rig Crew discuss hazards of pumping the job
7	01/26/2020 18:23	Prime Up					Fill Lines
8	01/26/2020 18:25	Pressure Test					Pressure Test to 3000psi
9	01/26/2020 18:27	Pump Spacer	8.3300		20.00		Pump 20bbl Blue Dye Spacer Fresh Water
10	01/26/2020 18:31	Pump Lead Cement	12.0000	6.50	113.00	250.00	LEAD- 113bbl at 12ppg, 252skts BJ Cem S100.3.1C, Y-2.52, GPS-14.86, MIX WTR-89bbl
11	01/26/2020 18:49	Pump Tail Cement	12.5000	6.00	57.00	300.00	TAIL- 57bbl at 12,5ppg, 145skts BJ Cem S100.3.1C, Y-.25, GPS-12.59, MIX WTR-43.5. Estimated Height of Tail at 660ft, Estimated Top of Tail at 888ft
12	01/26/2020 18:56	Drop Top Plug					Customer witnesses Top Plug leave
13	01/26/2020 19:03	Pump Displacement	8.4000	7.00	100.00	600.00	Total Displacement 117bbl DIRTY DIESEL, last 20bbl Fresh WATER
14	01/26/2020 19:20	Pump Displacement	8.4000	3.00	15.00	820.00	Slow last 20bbl to 3bpm to land plug and Fresh Water. 22bbl cement to surface
15	01/26/2020 19:24	Land Plug				1260.00	Plug Landed. Final Circulating Pressure 820psi took to 1260psi
16	01/26/2020 19:27	Check Floats					Floats Held, 1bbl back
17	01/26/2020 19:30	Rig Down					Rig Down
18	01/26/2020 20:30	Leave Location					Depart Location

Client: Bayswater Exploration & Production, LLC

Well Name / API: COT WEST #W-30-25HC / 05-123-50501

Well MD: 1530



Quote #: QUO-41645-R7N8H8

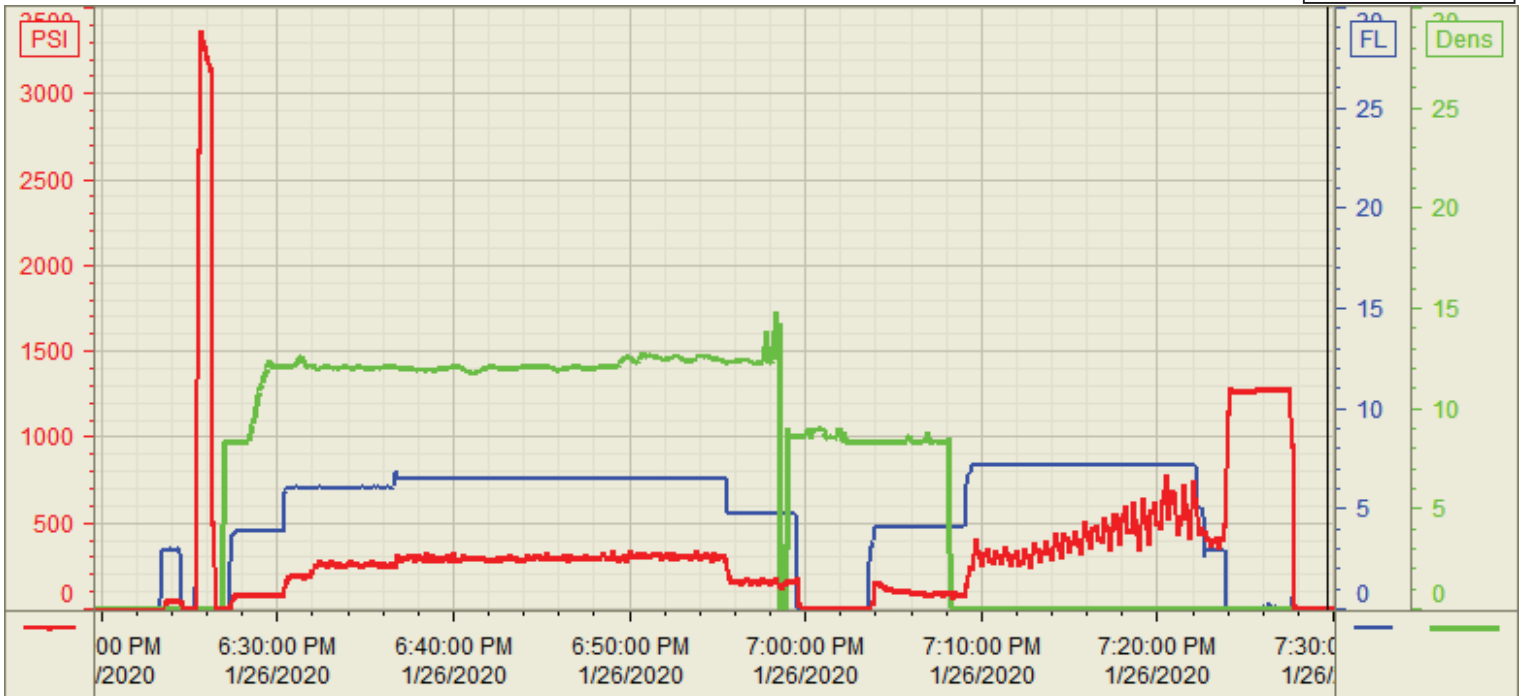
Plan #: ORD-24112-M6V3C9

Execution #: EXC-24112-M6V3C902

Customer: BAYWATER
 Well Number: W-30-25HC
 Lease Info: COT WEST



Print Date/Time
 1/26/2020 7:44:22 PM



	Name	Y value	X value/time stamp	Tag name Y
1	DS - Press (PSI)	-4.3	1/26/2020 7:30:00 PM	Cementer\DS_DISCHARGE_PRESS_DIAL
2	Den - Density (PPG)		1/26/2020 7:30:00 PM i.	Cementer\DENSITY_ACTUAL_RATE
3	Pump Rate		1/26/2020 7:30:00 PM i.	Cementer\Flow_Combined
4				
5				

Source: Control1 7:44:22 PM