

# Bayswater Exploration & Production, LLC

Well Name: **COT WEST R-30-25HN**

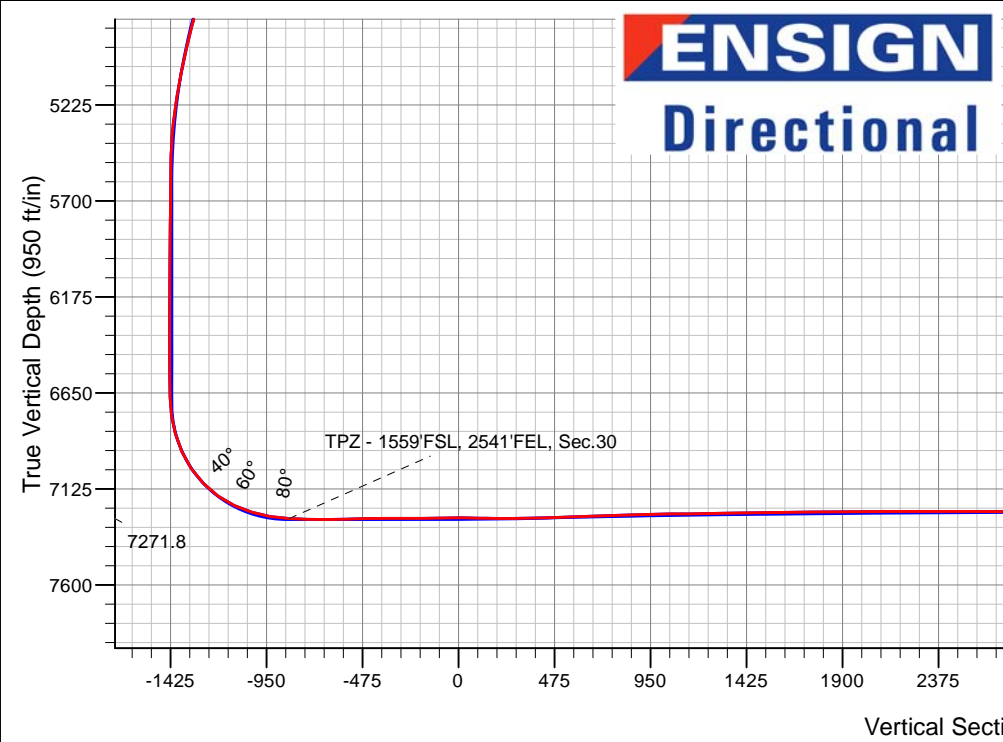
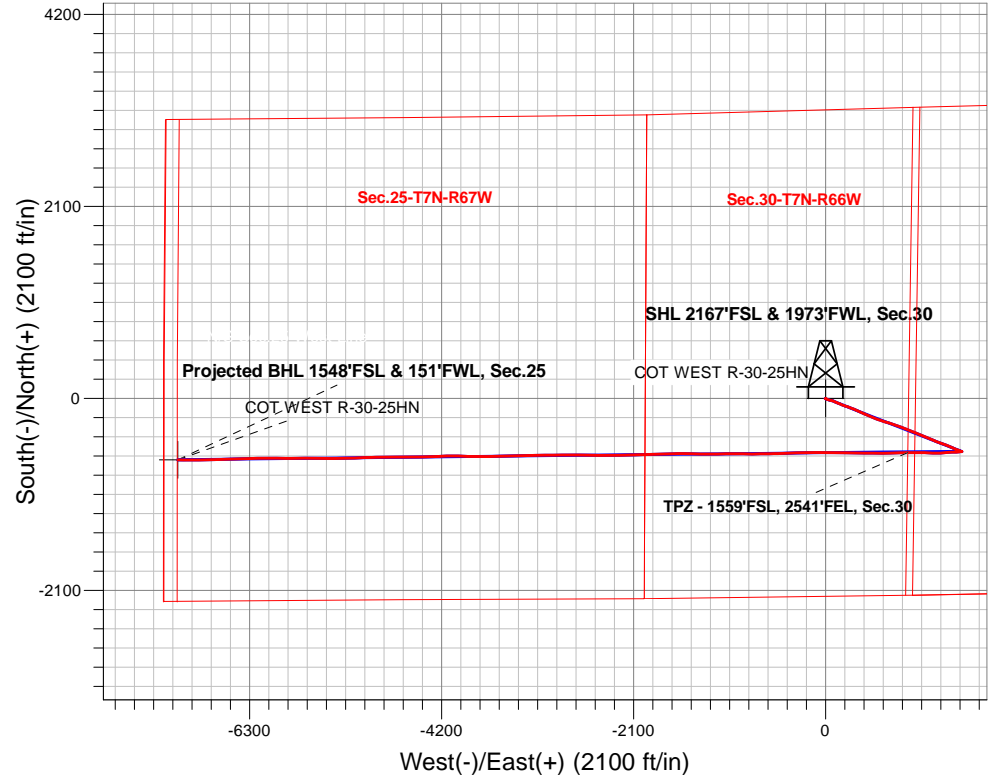
Surface Location: COT 30J Pad Sec.30-T7N-R66W  
 North American Datum 1983 , US State Plane 1983, Colorado Northern Zone  
 Ground Elevation: 4946.0

+N/-S	+E/-W	Northing	Easting	Latitude	Longitude	Slot
0.0	0.0	1441733.09	3187616.71	40.543997	-104.824916	

Original Well Elev WELL @ 4971.0ft (Original Well Elev)

## FINAL SURVEY

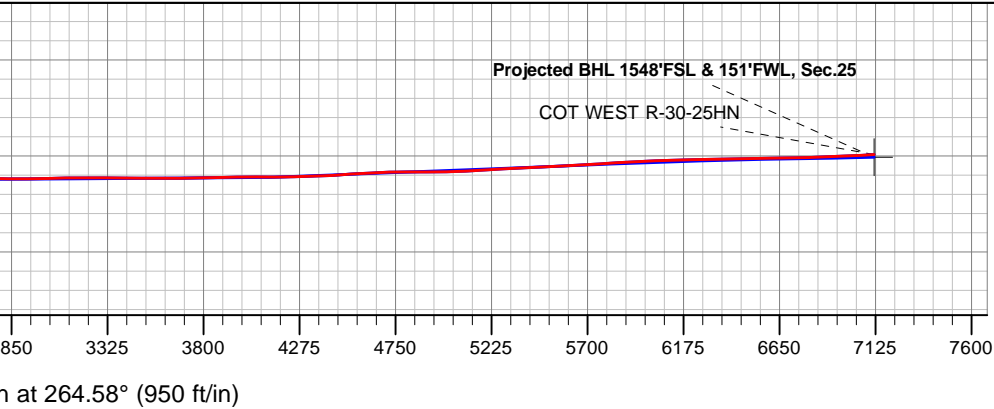
**Projected Bottom Hole Location**  
**15,911'MD 7118'TVD 674'S & 7086'W of SHL**  
**93.30 degree Incl @ 270.69 degree AZM**



COT 30J Pad Sec.30-T7N-R66W  
 COT WEST R-30-25HN  
 COT WEST R-30-25HN Wellbore #1  
 13:40, March 19 2020

ANNOTATIONS		
TVD	MD	Annotation
7271.8	7921.5	TPZ - 1559'FSL, 2541'FEL, Sec.30

LEGEND	
	COT WEST R-30-25HN, COT WEST R-30-25HN Wellbore #1, Plan #3 (3-14-20) V0
	COT WEST R-30-25HN Wellbore #1
	Survey #1





# **Bayswater Exploration & Production, LLC**

**SEC.30-T7N-R66W**

**COT 30J Pad Sec.30-T7N-R66W**

**COT WEST R-30-25HN**

**COT WEST R-30-25HN Wellbore #1**

**Survey: Survey #1**

## **Standard Survey Report**

**19 March, 2020**



**BAYSWATER**  
**EXPLORATION & PRODUCTION, LLC**

<b>Company:</b>	Bayswater Exploration & Production, LLC	<b>Local Co-ordinate Reference:</b>	Well COT WEST R-30-25HN
<b>Project:</b>	SEC.30-T7N-R66W	<b>TVD Reference:</b>	WELL @ 4971.0ft (Original Well Elev)
<b>Site:</b>	COT 30J Pad Sec.30-T7N-R66W	<b>MD Reference:</b>	WELL @ 4971.0ft (Original Well Elev)
<b>Well:</b>	COT WEST R-30-25HN	<b>North Reference:</b>	True
<b>Wellbore:</b>	COT WEST R-30-25HN Wellbore #1	<b>Survey Calculation Method:</b>	Minimum Curvature
<b>Design:</b>	COT WEST R-30-25HN Wellbore #1	<b>Database:</b>	US_EDM

<b>Project</b>	SEC.30-T7N-R66W, Weld County, CO		
<b>Map System:</b>	US State Plane 1983	<b>System Datum:</b>	Mean Sea Level
<b>Geo Datum:</b>	North American Datum 1983		Using Well Reference Point
<b>Map Zone:</b>	Colorado Northern Zone		Using geodetic scale factor

<b>Site</b>	COT 30J Pad Sec.30-T7N-R66W				
<b>Site Position:</b>		<b>Northing:</b>	1,441,808.15 usft	<b>Latitude:</b>	40.544203
<b>From:</b>	Lat/Long	<b>Easting:</b>	3,187,616.69 usft	<b>Longitude:</b>	-104.824914
<b>Position Uncertainty:</b>	0.0 ft	<b>Slot Radius:</b>	13-3/16 "	<b>Grid Convergence:</b>	0.44 °

<b>Well</b>	COT WEST R-30-25HN					
<b>Well Position</b>	<b>+N/-S</b>	0.0 ft	<b>Northing:</b>	1,441,733.10 usft	<b>Latitude:</b>	40.543997
	<b>+E/-W</b>	0.0 ft	<b>Easting:</b>	3,187,616.71 usft	<b>Longitude:</b>	-104.824916
<b>Position Uncertainty</b>		0.0 ft	<b>Wellhead Elevation:</b>	0.0 ft	<b>Ground Level:</b>	4,946.0 ft

<b>Wellbore</b>	COT WEST R-30-25HN Wellbore #1				
<b>Magnetics</b>	<b>Model Name</b>	<b>Sample Date</b>	<b>Declination (°)</b>	<b>Dip Angle (°)</b>	<b>Field Strength (nT)</b>
	HDGM	3/14/2020	7.90	66.87	52,220

<b>Design</b>	COT WEST R-30-25HN Wellbore #1				
<b>Audit Notes:</b>					
<b>Version:</b>	1.0	<b>Phase:</b>	ACTUAL	<b>Tie On Depth:</b>	0.0
<b>Vertical Section:</b>	<b>Depth From (TVD) (ft)</b>	<b>+N/-S (ft)</b>	<b>+E/-W (ft)</b>	<b>Direction (°)</b>	
	0.0	0.0	0.0	264.58	

<b>Survey Program</b>	<b>Date</b>	3/19/2020		
<b>From (ft)</b>	<b>To (ft)</b>	<b>Survey (Wellbore)</b>	<b>Tool Name</b>	<b>Description</b>
311.0	15,911.0	Survey #1 (COT WEST R-30-25HN Wellbo	MWD	MWD - Standard

Measured Depth (ft)	Inclination (°)	Azimuth (°)	Vertical Depth (ft)	+N/-S (ft)	+E/-W (ft)	Vertical Section (ft)	Dogleg Rate (°/100usft)	Build Rate (°/100usft)	Turn Rate (°/100usft)
0.0	0.00	0.00	0.0	0.0	0.0	0.0	0.00	0.00	0.00
311.0	1.58	235.73	311.0	-2.4	-3.5	3.8	0.51	0.51	0.00
406.0	0.88	222.55	405.9	-3.7	-5.1	5.4	0.79	-0.74	-13.87
501.0	0.62	143.27	500.9	-4.6	-5.3	5.7	1.03	-0.27	-83.45
596.0	2.37	111.46	595.9	-5.8	-3.2	3.7	1.97	1.84	-33.48
691.0	3.87	107.59	690.8	-7.5	1.7	-1.0	1.59	1.58	-4.07
785.0	5.10	108.82	784.5	-9.8	8.7	-7.7	1.31	1.31	1.31
880.0	6.24	107.94	879.0	-12.7	17.6	-16.3	1.20	1.20	-0.93
974.0	6.51	106.18	972.4	-15.8	27.6	-26.0	0.35	0.29	-1.87
1,069.0	6.95	105.30	1,066.8	-18.8	38.3	-36.4	0.48	0.46	-0.93

<b>Company:</b>	Bayswater Exploration & Production, LLC	<b>Local Co-ordinate Reference:</b>	Well COT WEST R-30-25HN
<b>Project:</b>	SEC.30-T7N-R66W	<b>TVD Reference:</b>	WELL @ 4971.0ft (Original Well Elev)
<b>Site:</b>	COT 30J Pad Sec.30-T7N-R66W	<b>MD Reference:</b>	WELL @ 4971.0ft (Original Well Elev)
<b>Well:</b>	COT WEST R-30-25HN	<b>North Reference:</b>	True
<b>Wellbore:</b>	COT WEST R-30-25HN Wellbore #1	<b>Survey Calculation Method:</b>	Minimum Curvature
<b>Design:</b>	COT WEST R-30-25HN Wellbore #1	<b>Database:</b>	US_EDM

Survey										
Measured Depth (ft)	Inclination (°)	Azimuth (°)	Vertical Depth (ft)	+N/-S (ft)	+E/-W (ft)	Vertical Section (ft)	Dogleg Rate (°/100usft)	Build Rate (°/100usft)	Turn Rate (°/100usft)	
1,164.0	6.86	104.78	1,161.1	-21.8	49.3	-47.1	0.12	-0.09	-0.55	
1,259.0	6.86	104.07	1,255.4	-24.6	60.3	-57.7	0.09	0.00	-0.75	
1,354.0	7.56	103.55	1,349.6	-27.4	71.9	-69.0	0.74	0.74	-0.55	
1,449.0	7.39	109.52	1,443.8	-30.9	83.7	-80.4	0.84	-0.18	6.28	
1,512.0	7.65	113.74	1,506.3	-34.0	91.4	-87.8	0.97	0.41	6.70	
1,663.0	8.79	114.25	1,655.7	-42.8	111.1	-106.6	0.76	0.75	0.34	
1,758.0	10.46	110.91	1,749.4	-48.8	125.8	-120.6	1.85	1.76	-3.52	
1,853.0	12.13	114.25	1,842.6	-56.0	142.9	-137.0	1.89	1.76	3.52	
1,947.0	14.33	113.19	1,934.1	-64.6	162.6	-155.8	2.35	2.34	-1.13	
2,042.0	16.18	111.79	2,025.7	-74.2	185.7	-177.9	1.99	1.95	-1.47	
2,136.0	17.85	109.50	2,115.6	-83.8	211.5	-202.6	1.91	1.78	-2.44	
2,231.0	20.40	107.92	2,205.3	-93.8	241.0	-231.0	2.74	2.68	-1.66	
2,325.0	22.86	110.56	2,292.7	-105.3	273.7	-262.5	2.81	2.62	2.81	
2,420.0	23.30	111.96	2,380.1	-118.8	308.4	-295.8	0.74	0.46	1.47	
2,514.0	25.15	114.25	2,465.8	-133.9	343.8	-329.6	2.21	1.97	2.44	
2,608.0	26.38	115.13	2,550.5	-151.0	380.9	-365.0	1.37	1.31	0.94	
2,703.0	25.59	114.78	2,635.9	-168.6	418.7	-400.9	0.85	-0.83	-0.37	
2,798.0	26.47	112.31	2,721.2	-185.2	456.9	-437.4	1.47	0.93	-2.60	
2,892.0	25.94	111.96	2,805.6	-200.8	495.3	-474.2	0.59	-0.56	-0.37	
2,986.0	25.68	111.61	2,890.2	-216.0	533.3	-510.6	0.32	-0.28	-0.37	
3,080.0	24.45	111.44	2,975.4	-230.6	570.4	-546.1	1.31	-1.31	-0.18	
3,175.0	24.89	107.57	3,061.7	-243.9	607.7	-582.0	1.76	0.46	-4.07	
3,270.0	27.35	106.16	3,147.0	-256.0	647.8	-620.7	2.67	2.59	-1.48	
3,387.0	27.70	108.62	3,250.7	-272.1	699.4	-670.6	1.02	0.30	2.10	
3,482.0	25.50	108.27	3,335.7	-285.6	739.7	-709.4	2.32	-2.32	-0.37	
3,576.0	26.91	109.33	3,420.0	-299.0	779.0	-747.3	1.58	1.50	1.13	
3,671.0	26.64	111.79	3,504.8	-314.0	819.1	-785.8	1.20	-0.28	2.59	
3,765.0	24.27	110.20	3,589.7	-328.5	856.8	-821.9	2.62	-2.52	-1.69	
3,860.0	26.73	110.73	3,675.4	-342.8	895.1	-858.7	2.60	2.59	0.56	
3,954.0	26.20	111.79	3,759.6	-358.0	934.1	-896.2	0.76	-0.56	1.13	
4,048.0	27.70	112.67	3,843.4	-374.1	973.5	-933.9	1.65	1.60	0.94	
4,143.0	28.14	112.84	3,927.3	-391.3	1,014.6	-973.1	0.47	0.46	0.18	
4,237.0	28.14	113.02	4,010.2	-408.6	1,055.4	-1,012.1	0.09	0.00	0.19	
4,332.0	28.14	112.67	4,094.0	-426.0	1,096.7	-1,051.6	0.17	0.00	-0.37	
4,426.0	26.73	112.14	4,177.4	-442.5	1,136.7	-1,089.9	1.52	-1.50	-0.56	
4,521.0	24.80	111.79	4,263.0	-458.0	1,175.0	-1,126.5	2.04	-2.03	-0.37	
4,616.0	23.39	111.08	4,349.7	-472.1	1,211.1	-1,161.1	1.52	-1.48	-0.75	
4,710.0	21.98	111.08	4,436.4	-485.2	1,244.9	-1,193.6	1.50	-1.50	0.00	
4,805.0	20.66	111.08	4,524.9	-497.6	1,277.2	-1,224.5	1.39	-1.39	0.00	
4,899.0	20.05	110.38	4,613.0	-509.2	1,307.7	-1,253.8	0.70	-0.65	-0.74	
4,994.0	19.35	110.20	4,702.5	-520.3	1,337.8	-1,282.7	0.74	-0.74	-0.19	
5,088.0	16.71	114.60	4,791.9	-531.3	1,364.7	-1,308.5	3.16	-2.81	4.68	
5,183.0	15.56	114.78	4,883.1	-542.3	1,388.7	-1,331.3	1.21	-1.21	0.19	
5,277.0	14.51	113.72	4,973.9	-552.3	1,410.9	-1,352.5	1.15	-1.12	-1.13	

<b>Company:</b>	Bayswater Exploration & Production, LLC	<b>Local Co-ordinate Reference:</b>	Well COT WEST R-30-25HN
<b>Project:</b>	SEC.30-T7N-R66W	<b>TVD Reference:</b>	WELL @ 4971.0ft (Original Well Elev)
<b>Site:</b>	COT 30J Pad Sec.30-T7N-R66W	<b>MD Reference:</b>	WELL @ 4971.0ft (Original Well Elev)
<b>Well:</b>	COT WEST R-30-25HN	<b>North Reference:</b>	True
<b>Wellbore:</b>	COT WEST R-30-25HN Wellbore #1	<b>Survey Calculation Method:</b>	Minimum Curvature
<b>Design:</b>	COT WEST R-30-25HN Wellbore #1	<b>Database:</b>	US_EDM

Survey										
Measured Depth (ft)	Inclination (°)	Azimuth (°)	Vertical Depth (ft)	+N/-S (ft)	+E/-W (ft)	Vertical Section (ft)	Dogleg Rate (°/100usft)	Build Rate (°/100usft)	Turn Rate (°/100usft)	
5,372.0	11.70	110.73	5,066.4	-560.5	1,430.8	-1,371.5	3.04	-2.96	-3.15	
5,466.0	11.26	108.97	5,158.5	-566.9	1,448.4	-1,388.4	0.60	-0.47	-1.87	
5,561.0	8.27	113.37	5,252.1	-572.6	1,463.5	-1,402.9	3.24	-3.15	4.63	
5,656.0	6.16	113.72	5,346.4	-577.4	1,474.4	-1,413.3	2.22	-2.22	0.37	
5,750.0	3.43	112.84	5,440.0	-580.5	1,481.6	-1,420.2	2.91	-2.90	-0.94	
5,845.0	0.88	120.58	5,535.0	-582.0	1,484.8	-1,423.3	2.70	-2.68	8.15	
5,939.0	0.53	99.83	5,629.0	-582.4	1,485.9	-1,424.3	0.46	-0.37	-22.07	
6,033.0	0.62	112.84	5,723.0	-582.7	1,486.8	-1,425.2	0.17	0.10	13.84	
6,128.0	0.79	124.27	5,818.0	-583.2	1,487.8	-1,426.1	0.23	0.18	12.03	
6,222.0	0.62	114.07	5,911.9	-583.8	1,488.8	-1,427.1	0.22	-0.18	-10.85	
6,317.0	0.44	99.31	6,006.9	-584.1	1,489.6	-1,427.9	0.24	-0.19	-15.54	
6,411.0	0.35	89.29	6,100.9	-584.1	1,490.3	-1,428.5	0.12	-0.10	-10.66	
6,506.0	0.35	61.51	6,195.9	-584.0	1,490.8	-1,429.1	0.18	0.00	-29.24	
6,600.0	0.18	10.71	6,289.9	-583.7	1,491.1	-1,429.4	0.29	-0.18	-54.04	
6,695.0	0.35	347.33	6,384.9	-583.3	1,491.1	-1,429.4	0.21	0.18	-24.61	
6,790.0	0.44	356.47	6,479.9	-582.6	1,491.0	-1,429.3	0.12	0.09	9.62	
6,884.0	0.35	298.82	6,573.9	-582.1	1,490.7	-1,429.1	0.41	-0.10	-61.33	
6,978.0	1.93	273.68	6,667.9	-581.9	1,488.9	-1,427.3	1.72	1.68	-26.74	
7,072.0	7.30	259.79	6,761.6	-582.9	1,481.4	-1,419.8	5.79	5.71	-14.78	
7,167.0	16.00	263.13	6,854.5	-585.5	1,462.4	-1,400.7	9.18	9.16	3.52	
7,261.0	24.27	266.47	6,942.7	-588.2	1,430.2	-1,368.3	8.88	8.80	3.55	
7,356.0	35.09	269.81	7,025.1	-589.5	1,383.3	-1,321.5	11.52	11.39	3.52	
7,450.0	43.97	264.19	7,097.6	-592.9	1,323.7	-1,261.8	10.18	9.45	-5.98	
7,544.0	54.43	266.47	7,158.9	-598.6	1,252.9	-1,190.8	11.28	11.13	2.43	
7,639.0	65.42	272.10	7,206.5	-599.4	1,170.8	-1,109.0	12.65	11.57	5.93	
7,734.0	72.55	272.80	7,240.5	-595.6	1,082.3	-1,021.2	7.54	7.51	0.74	
7,828.0	80.72	269.29	7,262.3	-594.0	990.9	-930.5	9.42	8.69	-3.73	
7,921.5	87.54	268.94	7,271.8	-595.4	898.0	-837.8	7.31	7.30	-0.37	
<b>TPZ - 1559'FSL, 2541'FEL, Sec.30</b>										
7,922.0	87.58	268.94	7,271.8	-595.4	897.5	-837.3	7.31	7.30	-0.37	
8,016.0	88.11	268.41	7,275.4	-597.6	803.6	-743.6	0.80	0.56	-0.56	
8,111.0	90.57	268.94	7,276.5	-599.8	708.6	-648.9	2.65	2.59	0.56	
8,205.0	91.98	269.99	7,274.4	-600.7	614.7	-555.2	1.87	1.50	1.12	
8,300.0	91.45	271.22	7,271.5	-599.7	519.7	-460.8	1.41	-0.56	1.29	
8,395.0	89.34	270.17	7,270.9	-598.5	424.7	-366.3	2.48	-2.22	-1.11	
8,490.0	90.84	270.34	7,270.7	-598.1	329.7	-271.8	1.59	1.58	0.18	
8,585.0	89.52	269.99	7,270.4	-597.8	234.7	-177.3	1.44	-1.39	-0.37	
8,680.0	92.59	272.10	7,268.7	-596.1	139.8	-82.9	3.92	3.23	2.22	
8,774.0	89.08	270.69	7,267.3	-593.8	45.8	10.4	4.02	-3.73	-1.50	
8,869.0	88.72	270.52	7,269.1	-592.8	-49.1	104.9	0.42	-0.38	-0.18	
8,964.0	89.87	268.58	7,270.3	-593.6	-144.1	199.5	2.37	1.21	-2.04	
9,058.0	90.48	268.06	7,270.0	-596.3	-238.1	293.3	0.85	0.65	-0.55	
9,152.0	91.10	268.23	7,268.7	-599.4	-332.0	387.1	0.68	0.66	0.18	

<b>Company:</b>	Bayswater Exploration & Production, LLC	<b>Local Co-ordinate Reference:</b>	Well COT WEST R-30-25HN
<b>Project:</b>	SEC.30-T7N-R66W	<b>TVD Reference:</b>	WELL @ 4971.0ft (Original Well Elev)
<b>Site:</b>	COT 30J Pad Sec.30-T7N-R66W	<b>MD Reference:</b>	WELL @ 4971.0ft (Original Well Elev)
<b>Well:</b>	COT WEST R-30-25HN	<b>North Reference:</b>	True
<b>Wellbore:</b>	COT WEST R-30-25HN Wellbore #1	<b>Survey Calculation Method:</b>	Minimum Curvature
<b>Design:</b>	COT WEST R-30-25HN Wellbore #1	<b>Database:</b>	US_EDM

Survey									
Measured Depth (ft)	Inclination (°)	Azimuth (°)	Vertical Depth (ft)	+N/-S (ft)	+E/-W (ft)	Vertical Section (ft)	Dogleg Rate (°/100usft)	Build Rate (°/100usft)	Turn Rate (°/100usft)
9,247.0	91.80	268.41	7,266.3	-602.1	-426.9	481.9	0.76	0.74	0.19
9,341.0	92.68	268.06	7,262.6	-605.0	-520.8	575.6	1.01	0.94	-0.37
9,435.0	91.36	269.46	7,259.3	-607.1	-614.7	669.3	2.05	-1.40	1.49
9,530.0	92.07	268.94	7,256.5	-608.4	-709.7	763.9	0.93	0.75	-0.55
9,624.0	91.54	270.52	7,253.5	-608.8	-803.6	857.5	1.77	-0.56	1.68
9,719.0	91.80	269.99	7,250.7	-608.4	-898.6	952.0	0.62	0.27	-0.56
9,814.0	90.22	270.52	7,249.1	-608.0	-993.6	1,046.5	1.75	-1.66	0.56
9,909.0	90.57	269.64	7,248.4	-607.9	-1,088.6	1,141.1	1.00	0.37	-0.93
10,003.0	90.48	269.46	7,247.6	-608.6	-1,182.6	1,234.7	0.21	-0.10	-0.19
10,097.0	91.89	269.29	7,245.6	-609.6	-1,276.5	1,328.4	1.51	1.50	-0.18
10,191.0	90.57	270.87	7,243.6	-609.5	-1,370.5	1,421.9	2.19	-1.40	1.68
10,286.0	91.80	271.22	7,241.6	-607.8	-1,465.5	1,516.3	1.35	1.29	0.37
10,380.0	90.57	270.69	7,239.7	-606.2	-1,559.4	1,609.7	1.42	-1.31	-0.56
10,475.0	90.13	268.58	7,239.1	-606.8	-1,654.4	1,704.3	2.27	-0.46	-2.22
10,570.0	91.36	268.94	7,237.9	-608.9	-1,749.4	1,799.1	1.35	1.29	0.38
10,664.0	89.34	268.06	7,237.3	-611.3	-1,843.4	1,892.8	2.34	-2.15	-0.94
10,759.0	90.04	267.88	7,237.8	-614.7	-1,938.3	1,987.7	0.76	0.74	-0.19
10,853.0	91.10	268.41	7,236.9	-617.7	-2,032.2	2,081.5	1.26	1.13	0.56
10,948.0	90.31	268.06	7,235.7	-620.6	-2,127.2	2,176.3	0.91	-0.83	-0.37
11,043.0	90.40	269.81	7,235.1	-622.4	-2,222.2	2,271.0	1.84	0.09	1.84
11,137.0	88.99	269.11	7,235.6	-623.3	-2,316.2	2,364.7	1.67	-1.50	-0.74
11,232.0	90.57	269.29	7,236.0	-624.6	-2,411.1	2,459.3	1.67	1.66	0.19
11,326.0	88.99	271.04	7,236.3	-624.4	-2,505.1	2,552.9	2.51	-1.68	1.86
11,421.0	89.60	270.87	7,237.5	-622.8	-2,600.1	2,647.3	0.67	0.64	-0.18
11,516.0	90.40	271.75	7,237.5	-620.6	-2,695.1	2,741.6	1.25	0.84	0.93
11,610.0	89.34	269.46	7,237.7	-619.6	-2,789.1	2,835.1	2.68	-1.13	-2.44
11,704.0	90.57	269.46	7,237.8	-620.5	-2,883.1	2,928.8	1.31	1.31	0.00
11,799.0	91.63	269.29	7,236.0	-621.5	-2,978.1	3,023.4	1.13	1.12	-0.18
11,893.0	89.96	268.94	7,234.7	-623.0	-3,072.0	3,117.1	1.82	-1.78	-0.37
11,988.0	91.63	269.11	7,233.3	-624.6	-3,167.0	3,211.8	1.77	1.76	0.18
12,082.0	88.99	268.76	7,232.8	-626.3	-3,261.0	3,305.5	2.83	-2.81	-0.37
12,177.0	89.25	268.41	7,234.3	-628.7	-3,355.9	3,400.3	0.46	0.27	-0.37
12,271.0	89.87	268.58	7,235.0	-631.2	-3,449.9	3,494.1	0.68	0.66	0.18
12,366.0	90.31	268.23	7,234.9	-633.8	-3,544.9	3,588.9	0.59	0.46	-0.37
12,461.0	90.48	267.70	7,234.2	-637.2	-3,639.8	3,683.7	0.59	0.18	-0.56
12,555.0	90.84	271.04	7,233.1	-638.2	-3,733.8	3,777.3	3.57	0.38	3.55
12,649.0	91.28	270.69	7,231.4	-636.8	-3,827.7	3,870.8	0.60	0.47	-0.37
12,744.0	90.84	272.63	7,229.6	-634.0	-3,922.7	3,965.0	2.09	-0.46	2.04
12,839.0	89.78	270.87	7,229.1	-631.1	-4,017.6	4,059.3	2.16	-1.12	-1.85
12,933.0	89.96	269.99	7,229.3	-630.4	-4,111.6	4,152.8	0.96	0.19	-0.94
13,028.0	91.71	267.70	7,228.0	-632.3	-4,206.6	4,247.5	3.03	1.84	-2.41
13,122.0	91.54	267.53	7,225.3	-636.3	-4,300.5	4,341.3	0.26	-0.18	-0.18
13,217.0	93.83	267.53	7,220.8	-640.3	-4,395.3	4,436.1	2.41	2.41	0.00
13,312.0	93.39	268.58	7,214.9	-643.6	-4,490.0	4,530.7	1.20	-0.46	1.11

<b>Company:</b>	Bayswater Exploration & Production, LLC	<b>Local Co-ordinate Reference:</b>	Well COT WEST R-30-25HN
<b>Project:</b>	SEC.30-T7N-R66W	<b>TVD Reference:</b>	WELL @ 4971.0ft (Original Well Elev)
<b>Site:</b>	COT 30J Pad Sec.30-T7N-R66W	<b>MD Reference:</b>	WELL @ 4971.0ft (Original Well Elev)
<b>Well:</b>	COT WEST R-30-25HN	<b>North Reference:</b>	True
<b>Wellbore:</b>	COT WEST R-30-25HN Wellbore #1	<b>Survey Calculation Method:</b>	Minimum Curvature
<b>Design:</b>	COT WEST R-30-25HN Wellbore #1	<b>Database:</b>	US_EDM

Survey									
Measured Depth (ft)	Inclination (°)	Azimuth (°)	Vertical Depth (ft)	+N/-S (ft)	+E/-W (ft)	Vertical Section (ft)	Dogleg Rate (°/100usft)	Build Rate (°/100usft)	Turn Rate (°/100usft)
13,407.0	93.39	270.87	7,209.2	-644.0	-4,584.9	4,625.2	2.41	0.00	2.41
13,502.0	91.63	271.22	7,205.1	-642.3	-4,679.7	4,719.5	1.89	-1.85	0.37
13,596.0	89.96	268.94	7,203.8	-642.2	-4,773.7	4,813.0	3.01	-1.78	-2.43
13,691.0	90.13	268.94	7,203.7	-643.9	-4,868.7	4,907.7	0.18	0.18	0.00
13,786.0	90.75	267.88	7,203.0	-646.6	-4,963.7	5,002.5	1.29	0.65	-1.12
13,880.0	92.68	267.53	7,200.2	-650.3	-5,057.5	5,096.3	2.09	2.05	-0.37
13,975.0	93.47	268.41	7,195.1	-653.7	-5,152.3	5,191.0	1.24	0.83	0.93
14,069.0	94.44	268.41	7,188.6	-656.3	-5,246.1	5,284.6	1.03	1.03	0.00
14,164.0	92.07	269.64	7,183.2	-657.9	-5,340.9	5,379.2	2.81	-2.49	1.29
14,259.0	92.59	269.81	7,179.3	-658.3	-5,435.8	5,473.7	0.58	0.55	0.18
14,353.0	93.30	269.46	7,174.5	-658.9	-5,529.7	5,567.2	0.84	0.76	-0.37
14,448.0	92.42	271.40	7,169.7	-658.2	-5,624.6	5,661.6	2.24	-0.93	2.04
14,543.0	93.56	271.04	7,164.8	-656.2	-5,719.4	5,755.8	1.26	1.20	-0.38
14,638.0	93.91	268.58	7,158.6	-656.5	-5,814.2	5,850.2	2.61	0.37	-2.59
14,732.0	92.33	270.52	7,153.5	-657.3	-5,908.1	5,943.7	2.66	-1.68	2.06
14,827.0	93.03	270.69	7,149.0	-656.3	-6,003.0	6,038.1	0.76	0.74	0.18
14,921.0	91.54	270.52	7,145.3	-655.3	-6,096.9	6,131.5	1.60	-1.59	-0.18
15,016.0	90.48	268.06	7,143.6	-656.4	-6,191.8	6,226.2	2.82	-1.12	-2.59
15,111.0	91.28	268.23	7,142.2	-659.5	-6,286.8	6,321.0	0.86	0.84	0.18
15,205.0	92.42	268.58	7,139.1	-662.1	-6,380.7	6,414.7	1.27	1.21	0.37
15,300.0	90.48	268.58	7,136.7	-664.5	-6,475.6	6,509.4	2.04	-2.04	0.00
15,395.0	90.22	268.58	7,136.1	-666.8	-6,570.6	6,604.2	0.27	-0.27	0.00
15,489.0	91.10	268.06	7,135.1	-669.6	-6,664.5	6,698.0	1.09	0.94	-0.55
15,584.0	91.80	268.94	7,132.7	-672.1	-6,759.5	6,792.7	1.18	0.74	0.93
15,678.0	92.42	268.76	7,129.2	-674.0	-6,853.4	6,886.4	0.69	0.66	-0.19
15,773.0	92.51	270.17	7,125.1	-674.9	-6,948.3	6,981.0	1.49	0.09	1.48
15,851.0	93.30	270.69	7,121.2	-674.3	-7,026.2	7,058.5	1.21	1.01	0.67
15,911.0	93.30	270.69	7,117.7	-673.5	-7,086.1	7,118.0	0.00	0.00	0.00

Design Targets									
Target Name	Dip Angle (°)	Dip Dir. (°)	TVD (ft)	+N/-S (ft)	+E/-W (ft)	Northing (usft)	Easting (usft)	Latitude	Longitude
SHL 2167'FSL & 1973'F <sup>1</sup> - hit/miss target - Shape - survey hits target center - Point	0.00	0.00	1.0	0.0	0.0	1,441,733.10	3,187,616.71	40.543997	-104.824916
Projected BHL 1548'FSL - survey misses target center by 13.4ft at 15910.9ft MD (7117.7 TVD, -673.5 N, -7086.0 E) - Point	0.00	0.00	7,131.0	-671.9	-7,086.8	1,441,007.31	3,180,535.46	40.542150	-104.850414

<b>Company:</b>	Bayswater Exploration & Production, LLC	<b>Local Co-ordinate Reference:</b>	Well COT WEST R-30-25HN
<b>Project:</b>	SEC.30-T7N-R66W	<b>TVD Reference:</b>	WELL @ 4971.0ft (Original Well Elev)
<b>Site:</b>	COT 30J Pad Sec.30-T7N-R66W	<b>MD Reference:</b>	WELL @ 4971.0ft (Original Well Elev)
<b>Well:</b>	COT WEST R-30-25HN	<b>North Reference:</b>	True
<b>Wellbore:</b>	COT WEST R-30-25HN Wellbore #1	<b>Survey Calculation Method:</b>	Minimum Curvature
<b>Design:</b>	COT WEST R-30-25HN Wellbore #1	<b>Database:</b>	US_EDM

Survey Annotations				
Measured Depth (ft)	Vertical Depth (ft)	Local Coordinates		Comment
		+N/-S (ft)	+E/-W (ft)	
7,921.5	7,271.8	-595.4	898.0	TPZ - 1559'FSL, 2541'FEL, Sec.30

Checked By: \_\_\_\_\_ Approved By: \_\_\_\_\_ Date: \_\_\_\_\_