

# Bayswater Exploration & Production, LLC

Well Name: **COT WEST P-30-25HN**

Surface Location: COT 30J Pad Sec.30-T7N-R66W

North American Datum 1983 , US State Plane 1983, Colorado Northern Zone

Ground Elevation: 4946.0

+N/-S	+E/-W	Northing	Easting	Latitude	Longitude	Slot
0.0	0.0	1441762.97	3187616.76	40.544079	-104.824915	

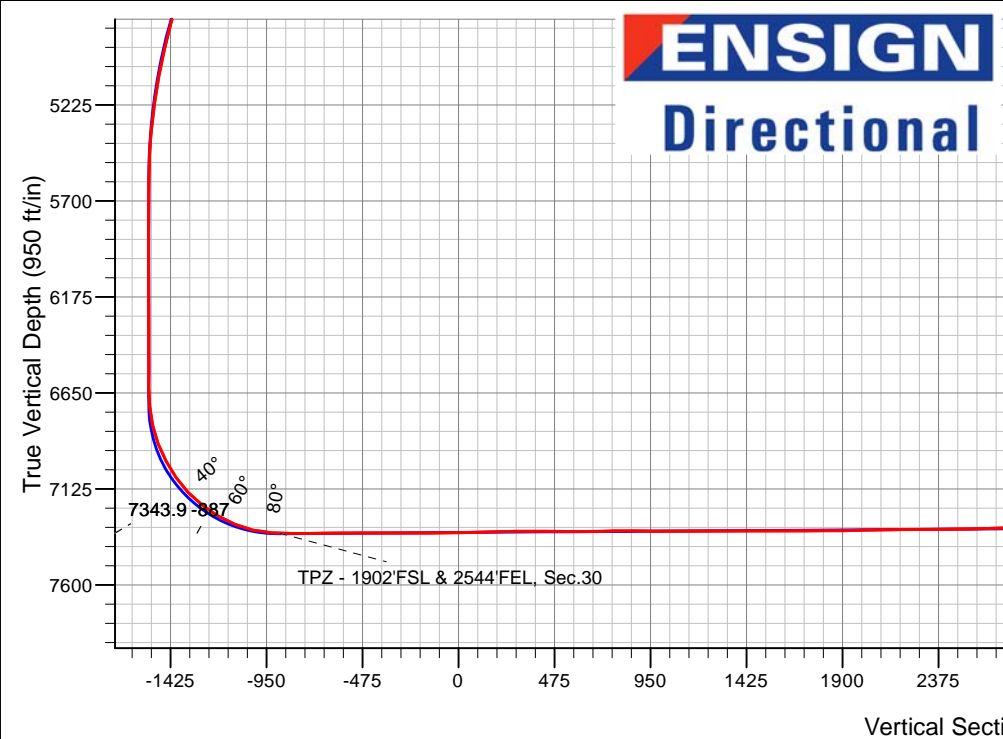
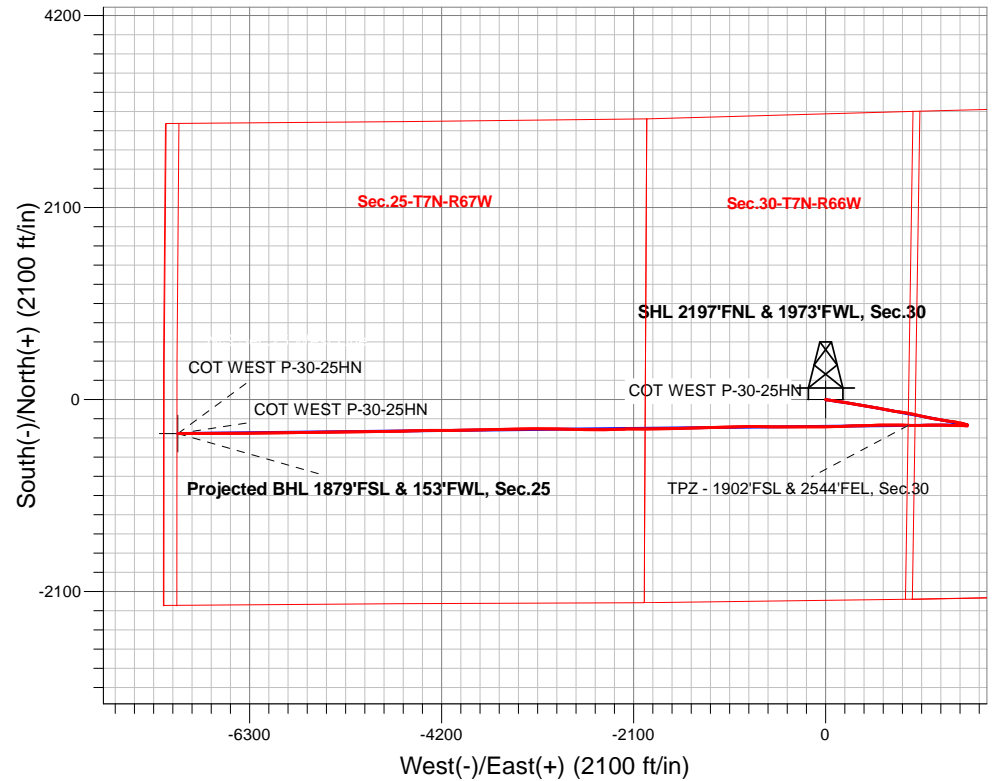
Original Well Elev WELL @ 4971.0ft (Original Well Elev)

## FINAL SURVEY

**Projected Bottom Hole Location**

**15,957'MD 7173'TVD 373'S & 7084'W of SHL**

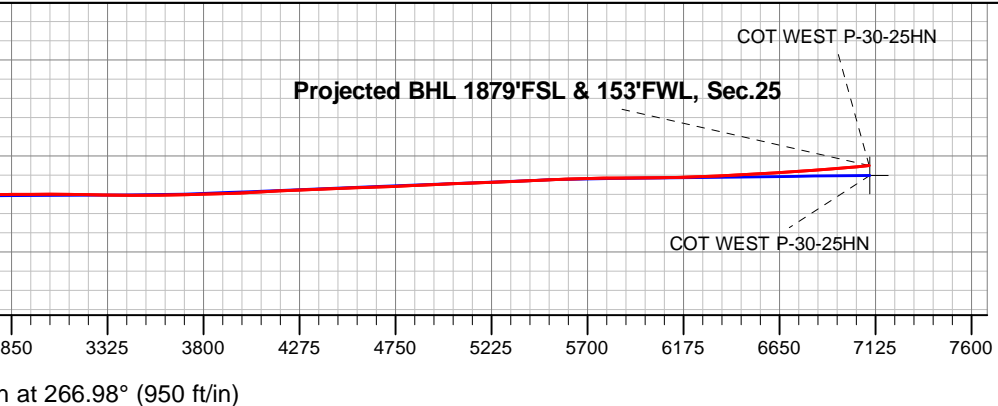
**95.41 degree Incl @ 269.29 degree AZM**



COT 30J Pad Sec.30-T7N-R66W  
 COT WEST P-30-25HN  
 COT WEST P-30-25HN Wellbore #1  
 8:43, March 31 2020

ANNOTATIONS		
TVD	MD	Annotation
7343.9	7964.4	TPZ - 1902'FSL & 2544'FEL, Sec.30

LEGEND	
	COT WEST P-30-25HN, COT WEST P-30-25HN Wellbore #1, Plan #3 (3-25-20) V0
	COT WEST P-30-25HN Wellbore #1
	Survey #1





# **Bayswater Exploration & Production, LLC**

**SEC.30-T7N-R66W**

**COT 30J Pad Sec.30-T7N-R66W**

**COT WEST P-30-25HN**

**COT WEST P-30-25HN Wellbore #1**

**Survey: Survey #1**

## **Standard Survey Report**

**31 March, 2020**



<b>Company:</b>	Bayswater Exploration & Production, LLC	<b>Local Co-ordinate Reference:</b>	Well COT WEST P-30-25HN
<b>Project:</b>	SEC.30-T7N-R66W	<b>TVD Reference:</b>	WELL @ 4971.0ft (Original Well Elev)
<b>Site:</b>	COT 30J Pad Sec.30-T7N-R66W	<b>MD Reference:</b>	WELL @ 4971.0ft (Original Well Elev)
<b>Well:</b>	COT WEST P-30-25HN	<b>North Reference:</b>	True
<b>Wellbore:</b>	COT WEST P-30-25HN Wellbore #1	<b>Survey Calculation Method:</b>	Minimum Curvature
<b>Design:</b>	COT WEST P-30-25HN Wellbore #1	<b>Database:</b>	US_EDM

<b>Project</b>	SEC.30-T7N-R66W, Weld County, CO		
<b>Map System:</b>	US State Plane 1983	<b>System Datum:</b>	Mean Sea Level
<b>Geo Datum:</b>	North American Datum 1983		Using Well Reference Point
<b>Map Zone:</b>	Colorado Northern Zone		Using geodetic scale factor

<b>Site</b>	COT 30J Pad Sec.30-T7N-R66W				
<b>Site Position:</b>		<b>Northing:</b>	1,441,808.15 usft	<b>Latitude:</b>	40.544203
<b>From:</b>	Lat/Long	<b>Easting:</b>	3,187,616.69 usft	<b>Longitude:</b>	-104.824914
<b>Position Uncertainty:</b>	0.0 ft	<b>Slot Radius:</b>	13-3/16 "	<b>Grid Convergence:</b>	0.44 °

<b>Well</b>	COT WEST P-30-25HN					
<b>Well Position</b>	<b>+N/-S</b>	0.0 ft	<b>Northing:</b>	1,441,762.97 usft	<b>Latitude:</b>	40.544079
	<b>+E/-W</b>	0.0 ft	<b>Easting:</b>	3,187,616.76 usft	<b>Longitude:</b>	-104.824915
<b>Position Uncertainty</b>		0.0 ft	<b>Wellhead Elevation:</b>	0.0 ft	<b>Ground Level:</b>	4,946.0 ft

<b>Wellbore</b>	COT WEST P-30-25HN Wellbore #1				
<b>Magnetics</b>	<b>Model Name</b>	<b>Sample Date</b>	<b>Declination (°)</b>	<b>Dip Angle (°)</b>	<b>Field Strength (nT)</b>
	HDGM	03/25/2020	7.90	66.87	52,217

<b>Design</b>	COT WEST P-30-25HN Wellbore #1				
<b>Audit Notes:</b>					
<b>Version:</b>	1.0	<b>Phase:</b>	ACTUAL	<b>Tie On Depth:</b>	0.0
<b>Vertical Section:</b>	<b>Depth From (TVD) (ft)</b>	<b>+N/-S (ft)</b>	<b>+E/-W (ft)</b>	<b>Direction (°)</b>	
	0.0	0.0	0.0	266.98	

<b>Survey Program</b>	<b>Date</b>	03/31/2020			
<b>From (ft)</b>	<b>To (ft)</b>	<b>Survey (Wellbore)</b>	<b>Tool Name</b>	<b>Description</b>	
311.0	15,957.0	Survey #1 (COT WEST P-30-25HN Wellbo	MWD	MWD - Standard	

<b>Survey</b>										
<b>Measured Depth (ft)</b>	<b>Inclination (°)</b>	<b>Azimuth (°)</b>	<b>Vertical Depth (ft)</b>	<b>+N/-S (ft)</b>	<b>+E/-W (ft)</b>	<b>Vertical Section (ft)</b>	<b>Dogleg Rate (°/100usft)</b>	<b>Build Rate (°/100usft)</b>	<b>Turn Rate (°/100usft)</b>	
0.0	0.00	0.00	0.0	0.0	0.0	0.0	0.00	0.00	0.00	
311.0	1.58	141.16	311.0	-3.3	2.7	-2.5	0.51	0.51	0.00	
406.0	1.76	88.96	405.9	-4.3	5.0	-4.7	1.56	0.19	-54.95	
501.0	3.34	83.33	500.8	-4.0	9.2	-9.0	1.68	1.66	-5.93	
596.0	5.54	91.59	595.5	-3.8	16.5	-16.3	2.41	2.32	8.69	
691.0	6.77	95.81	690.0	-4.5	26.7	-26.4	1.38	1.29	4.44	
785.0	7.91	97.39	783.2	-5.9	38.6	-38.2	1.23	1.21	1.68	
880.0	9.23	102.49	877.2	-8.4	52.5	-52.0	1.60	1.39	5.37	
974.0	9.94	103.55	969.8	-11.9	67.8	-67.0	0.78	0.76	1.13	
1,069.0	11.43	98.62	1,063.2	-15.2	85.0	-84.1	1.84	1.57	-5.19	

<b>Company:</b>	Bayswater Exploration & Production, LLC	<b>Local Co-ordinate Reference:</b>	Well COT WEST P-30-25HN
<b>Project:</b>	SEC.30-T7N-R66W	<b>TVD Reference:</b>	WELL @ 4971.0ft (Original Well Elev)
<b>Site:</b>	COT 30J Pad Sec.30-T7N-R66W	<b>MD Reference:</b>	WELL @ 4971.0ft (Original Well Elev)
<b>Well:</b>	COT WEST P-30-25HN	<b>North Reference:</b>	True
<b>Wellbore:</b>	COT WEST P-30-25HN Wellbore #1	<b>Survey Calculation Method:</b>	Minimum Curvature
<b>Design:</b>	COT WEST P-30-25HN Wellbore #1	<b>Database:</b>	US_EDM

Survey										
Measured Depth (ft)	Inclination (°)	Azimuth (°)	Vertical Depth (ft)	+N/-S (ft)	+E/-W (ft)	Vertical Section (ft)	Dogleg Rate (°/100usft)	Build Rate (°/100usft)	Turn Rate (°/100usft)	
1,164.0	12.66	96.69	1,156.1	-17.9	104.7	-103.6	1.36	1.29	-2.03	
1,259.0	14.42	99.15	1,248.5	-20.9	126.7	-125.4	1.95	1.85	2.59	
1,354.0	15.12	98.10	1,340.3	-24.6	150.7	-149.2	0.79	0.74	-1.11	
1,449.0	15.70	97.00	1,431.9	-27.9	175.7	-174.0	0.68	0.61	-1.16	
1,493.0	16.00	96.51	1,474.2	-29.3	187.6	-185.8	0.75	0.68	-1.11	
1,665.0	17.85	98.60	1,638.8	-35.9	237.2	-235.0	1.13	1.08	1.22	
1,759.0	19.96	98.25	1,727.7	-40.4	267.4	-264.9	2.25	2.24	-0.37	
1,854.0	19.70	98.78	1,817.1	-45.2	299.2	-296.4	0.33	-0.27	0.56	
1,949.0	21.90	101.94	1,905.9	-51.3	332.4	-329.2	2.60	2.32	3.33	
2,043.0	21.72	100.71	1,993.1	-58.1	366.6	-363.1	0.52	-0.19	-1.31	
2,138.0	21.28	99.31	2,081.5	-64.2	400.9	-397.0	0.71	-0.46	-1.47	
2,233.0	21.28	98.78	2,170.1	-69.6	435.0	-430.7	0.20	0.00	-0.56	
2,326.0	21.98	100.89	2,256.5	-75.5	468.7	-464.1	1.13	0.75	2.27	
2,420.0	21.46	100.19	2,343.8	-81.8	502.9	-497.9	0.62	-0.55	-0.74	
2,515.0	20.84	99.83	2,432.4	-87.8	536.7	-531.3	0.67	-0.65	-0.38	
2,610.0	21.81	101.94	2,520.9	-94.3	570.6	-564.9	1.30	1.02	2.22	
2,704.0	21.28	101.06	2,608.4	-101.2	604.4	-598.3	0.66	-0.56	-0.94	
2,799.0	20.66	100.54	2,697.1	-107.6	637.8	-631.3	0.68	-0.65	-0.55	
2,894.0	22.16	100.89	2,785.5	-114.0	671.9	-665.0	1.58	1.58	0.37	
2,989.0	21.63	100.36	2,873.7	-120.6	706.7	-699.4	0.60	-0.56	-0.56	
3,084.0	20.93	99.66	2,962.2	-126.6	740.7	-733.0	0.78	-0.74	-0.74	
3,179.0	21.90	97.90	3,050.6	-131.9	774.9	-766.9	1.22	1.02	-1.85	
3,274.0	20.93	96.67	3,139.1	-136.3	809.4	-801.1	1.13	-1.02	-1.29	
3,390.0	22.07	99.83	3,247.0	-142.4	851.4	-842.7	1.40	0.98	2.72	
3,484.0	20.31	97.20	3,334.6	-147.4	885.0	-876.0	2.13	-1.87	-2.80	
3,579.0	21.28	101.06	3,423.5	-152.8	918.3	-909.0	1.77	1.02	4.06	
3,673.0	19.52	99.48	3,511.6	-158.7	950.5	-940.8	1.96	-1.87	-1.68	
3,768.0	20.22	103.88	3,600.9	-165.2	982.1	-972.0	1.74	0.74	4.63	
3,862.0	20.22	105.99	3,689.1	-173.6	1,013.5	-1,002.9	0.78	0.00	2.24	
3,957.0	21.63	103.35	3,777.8	-182.2	1,046.3	-1,035.3	1.79	1.48	-2.78	
4,052.0	21.28	102.12	3,866.3	-189.8	1,080.2	-1,068.7	0.60	-0.37	-1.29	
4,146.0	23.74	102.12	3,953.1	-197.4	1,115.4	-1,103.5	2.62	2.62	0.00	
4,241.0	24.53	100.19	4,039.8	-204.9	1,153.5	-1,141.1	1.18	0.83	-2.03	
4,335.0	24.71	100.19	4,125.2	-211.8	1,192.0	-1,179.2	0.19	0.19	0.00	
4,429.0	23.74	99.31	4,211.0	-218.4	1,230.0	-1,216.8	1.10	-1.03	-0.94	
4,524.0	22.16	99.13	4,298.4	-224.3	1,266.6	-1,253.0	1.66	-1.66	-0.19	
4,618.0	20.84	98.08	4,385.9	-229.5	1,300.7	-1,286.8	1.46	-1.40	-1.12	
4,714.0	19.17	97.90	4,476.1	-234.0	1,333.2	-1,319.0	1.74	-1.74	-0.19	
4,808.0	18.11	97.55	4,565.2	-238.1	1,363.0	-1,348.5	1.13	-1.13	-0.37	
4,902.0	17.67	97.72	4,654.6	-241.9	1,391.6	-1,376.9	0.47	-0.47	0.18	
4,996.0	15.92	103.88	4,744.6	-246.9	1,418.2	-1,403.3	2.65	-1.86	6.55	
5,091.0	14.51	100.89	4,836.3	-252.3	1,442.6	-1,427.3	1.70	-1.48	-3.15	
5,186.0	13.28	100.01	4,928.5	-256.4	1,465.0	-1,449.5	1.31	-1.29	-0.93	
5,280.0	12.31	98.08	5,020.2	-259.7	1,485.6	-1,469.8	1.13	-1.03	-2.05	

<b>Company:</b>	Bayswater Exploration & Production, LLC	<b>Local Co-ordinate Reference:</b>	Well COT WEST P-30-25HN
<b>Project:</b>	SEC.30-T7N-R66W	<b>TVD Reference:</b>	WELL @ 4971.0ft (Original Well Elev)
<b>Site:</b>	COT 30J Pad Sec.30-T7N-R66W	<b>MD Reference:</b>	WELL @ 4971.0ft (Original Well Elev)
<b>Well:</b>	COT WEST P-30-25HN	<b>North Reference:</b>	True
<b>Wellbore:</b>	COT WEST P-30-25HN Wellbore #1	<b>Survey Calculation Method:</b>	Minimum Curvature
<b>Design:</b>	COT WEST P-30-25HN Wellbore #1	<b>Database:</b>	US_EDM

Survey										
Measured Depth (ft)	Inclination (°)	Azimuth (°)	Vertical Depth (ft)	+N/-S (ft)	+E/-W (ft)	Vertical Section (ft)	Dogleg Rate (°/100usft)	Build Rate (°/100usft)	Turn Rate (°/100usft)	
5,374.0	9.94	108.45	5,112.4	-263.7	1,503.2	-1,487.2	3.29	-2.52	11.03	
5,469.0	9.23	106.16	5,206.1	-268.4	1,518.3	-1,502.0	0.85	-0.75	-2.41	
5,563.0	6.33	109.85	5,299.2	-272.3	1,530.4	-1,513.9	3.13	-3.09	3.93	
5,658.0	5.19	104.58	5,393.7	-275.1	1,539.5	-1,522.9	1.32	-1.20	-5.55	
5,752.0	2.90	111.26	5,487.5	-277.1	1,545.8	-1,529.1	2.48	-2.44	7.11	
5,847.0	0.97	131.47	5,582.4	-278.5	1,548.7	-1,531.9	2.12	-2.03	21.27	
5,942.0	0.70	131.65	5,677.4	-279.4	1,549.7	-1,532.8	0.28	-0.28	0.19	
6,036.0	0.53	154.50	5,771.4	-280.2	1,550.3	-1,533.4	0.31	-0.18	24.31	
6,130.0	0.53	181.22	5,865.4	-281.0	1,550.5	-1,533.5	0.26	0.00	28.43	
6,225.0	0.62	165.93	5,960.4	-281.9	1,550.6	-1,533.6	0.19	0.09	-16.09	
6,320.0	0.35	185.09	6,055.4	-282.7	1,550.7	-1,533.7	0.33	-0.28	20.17	
6,414.0	0.44	184.21	6,149.4	-283.4	1,550.6	-1,533.6	0.10	0.10	-0.94	
6,509.0	0.53	195.46	6,244.4	-284.1	1,550.5	-1,533.4	0.14	0.09	11.84	
6,604.0	0.62	198.80	6,339.4	-285.0	1,550.2	-1,533.1	0.10	0.09	3.52	
6,699.0	0.70	195.28	6,434.4	-286.1	1,549.9	-1,532.7	0.09	0.08	-3.71	
6,793.0	0.62	188.95	6,528.4	-287.2	1,549.7	-1,532.4	0.12	-0.09	-6.73	
6,887.0	0.44	185.09	6,622.4	-288.0	1,549.6	-1,532.3	0.20	-0.19	-4.11	
6,982.0	5.72	273.51	6,717.2	-288.1	1,544.8	-1,527.5	6.03	5.56	93.07	
7,076.0	12.22	275.61	6,810.0	-286.8	1,530.2	-1,513.0	6.92	6.91	2.23	
7,171.0	20.58	271.04	6,901.1	-285.5	1,503.5	-1,486.3	8.90	8.80	-4.81	
7,266.0	28.14	270.34	6,987.6	-285.1	1,464.3	-1,447.3	7.96	7.96	-0.74	
7,361.0	35.00	271.75	7,068.5	-284.1	1,414.6	-1,397.7	7.26	7.22	1.48	
7,455.0	43.53	270.87	7,141.2	-282.8	1,355.2	-1,338.4	9.09	9.07	-0.94	
7,550.0	51.53	271.57	7,205.3	-281.3	1,285.2	-1,268.6	8.44	8.42	0.74	
7,644.0	59.88	270.69	7,258.2	-279.8	1,207.6	-1,191.2	8.92	8.88	-0.94	
7,738.0	67.62	269.46	7,299.7	-279.7	1,123.4	-1,107.1	8.32	8.23	-1.31	
7,832.0	77.03	268.23	7,328.2	-281.5	1,033.9	-1,017.7	10.09	10.01	-1.31	
7,927.0	86.26	270.34	7,342.0	-282.7	940.1	-923.9	9.96	9.72	2.22	
7,964.4	87.87	271.25	7,343.9	-282.2	902.7	-886.6	4.95	4.31	2.44	
<b>TPZ - 1902'FSL &amp; 2544'FEL, Sec.30</b>										
8,021.0	90.31	272.63	7,344.8	-280.3	846.2	-830.2	4.95	4.31	2.43	
8,116.0	90.40	269.64	7,344.2	-278.4	751.2	-735.5	3.15	0.09	-3.15	
8,211.0	89.87	269.11	7,344.0	-279.4	656.2	-640.6	0.79	-0.56	-0.56	
8,306.0	90.31	268.58	7,343.9	-281.3	561.2	-545.6	0.73	0.46	-0.56	
8,400.0	90.13	268.41	7,343.5	-283.8	467.2	-451.7	0.26	-0.19	-0.18	
8,495.0	90.31	268.58	7,343.1	-286.3	372.3	-356.7	0.26	0.19	0.18	
8,589.0	89.78	268.06	7,343.1	-289.1	278.3	-262.7	0.79	-0.56	-0.55	
8,684.0	89.34	267.70	7,343.8	-292.6	183.4	-167.7	0.60	-0.46	-0.38	
8,779.0	91.63	269.29	7,343.0	-295.1	88.4	-72.8	2.93	2.41	1.67	
8,873.0	90.92	267.88	7,340.9	-297.4	-5.5	21.2	1.68	-0.76	-1.50	
8,968.0	91.71	270.34	7,338.7	-298.9	-100.5	116.1	2.72	0.83	2.59	
9,062.0	91.28	269.99	7,336.3	-298.6	-194.4	209.9	0.59	-0.46	-0.37	
9,156.0	91.54	269.99	7,334.0	-298.6	-288.4	303.7	0.28	0.28	0.00	

<b>Company:</b>	Bayswater Exploration & Production, LLC	<b>Local Co-ordinate Reference:</b>	Well COT WEST P-30-25HN
<b>Project:</b>	SEC.30-T7N-R66W	<b>TVD Reference:</b>	WELL @ 4971.0ft (Original Well Elev)
<b>Site:</b>	COT 30J Pad Sec.30-T7N-R66W	<b>MD Reference:</b>	WELL @ 4971.0ft (Original Well Elev)
<b>Well:</b>	COT WEST P-30-25HN	<b>North Reference:</b>	True
<b>Wellbore:</b>	COT WEST P-30-25HN Wellbore #1	<b>Survey Calculation Method:</b>	Minimum Curvature
<b>Design:</b>	COT WEST P-30-25HN Wellbore #1	<b>Database:</b>	US_EDM

Survey									
Measured Depth (ft)	Inclination (°)	Azimuth (°)	Vertical Depth (ft)	+N/-S (ft)	+E/-W (ft)	Vertical Section (ft)	Dogleg Rate (°/100usft)	Build Rate (°/100usft)	Turn Rate (°/100usft)
9,251.0	88.55	268.94	7,333.9	-299.5	-383.4	398.6	3.34	-3.15	-1.11
9,345.0	90.13	270.69	7,335.0	-299.8	-477.4	492.5	2.51	1.68	1.86
9,440.0	89.78	270.34	7,335.0	-298.9	-572.4	587.3	0.52	-0.37	-0.37
9,535.0	91.10	271.22	7,334.3	-297.6	-667.4	682.1	1.67	1.39	0.93
9,629.0	91.28	271.75	7,332.4	-295.2	-761.3	775.8	0.60	0.19	0.56
9,724.0	89.16	269.11	7,332.0	-294.5	-856.3	870.6	3.56	-2.23	-2.78
9,818.0	88.64	268.76	7,333.8	-296.2	-950.3	964.5	0.67	-0.55	-0.37
9,913.0	90.57	268.23	7,334.5	-298.7	-1,045.2	1,059.5	2.11	2.03	-0.56
10,008.0	89.52	267.70	7,334.4	-302.1	-1,140.2	1,154.5	1.24	-1.11	-0.56
10,102.0	91.28	269.11	7,333.7	-304.7	-1,234.1	1,248.4	2.40	1.87	1.50
10,197.0	90.31	267.88	7,332.4	-307.2	-1,329.1	1,343.4	1.65	-1.02	-1.29
10,291.0	89.34	266.65	7,332.7	-311.7	-1,423.0	1,437.4	1.67	-1.03	-1.31
10,385.0	90.40	269.46	7,332.9	-314.9	-1,516.9	1,531.4	3.19	1.13	2.99
10,479.0	90.48	269.29	7,332.2	-315.9	-1,610.9	1,625.3	0.20	0.09	-0.18
10,574.0	89.78	266.83	7,332.0	-319.1	-1,705.8	1,720.2	2.69	-0.74	-2.59
10,669.0	90.75	271.22	7,331.5	-320.8	-1,800.8	1,815.2	4.73	1.02	4.62
10,764.0	89.96	268.23	7,330.9	-321.2	-1,895.8	1,910.0	3.26	-0.83	-3.15
10,858.0	91.89	271.04	7,329.4	-321.8	-1,989.7	2,003.9	3.63	2.05	2.99
10,953.0	91.28	269.99	7,326.8	-321.0	-2,084.7	2,098.7	1.28	-0.64	-1.11
11,047.0	89.96	267.35	7,325.8	-323.1	-2,178.7	2,192.6	3.14	-1.40	-2.81
11,142.0	90.48	269.99	7,325.4	-325.3	-2,273.6	2,287.6	2.83	0.55	2.78
11,236.0	90.22	267.35	7,324.8	-327.5	-2,367.6	2,381.5	2.82	-0.28	-2.81
11,331.0	91.10	269.29	7,323.7	-330.3	-2,462.5	2,476.5	2.24	0.93	2.04
11,425.0	91.45	270.52	7,321.7	-330.5	-2,556.5	2,570.4	1.36	0.37	1.31
11,520.0	92.24	271.22	7,318.6	-329.0	-2,651.4	2,665.1	1.11	0.83	0.74
11,614.0	90.92	271.75	7,316.0	-326.6	-2,745.4	2,758.8	1.51	-1.40	0.56
11,709.0	89.69	271.04	7,315.5	-324.3	-2,840.3	2,853.5	1.49	-1.29	-0.75
11,804.0	90.75	271.04	7,315.1	-322.6	-2,935.3	2,948.2	1.12	1.12	0.00
11,898.0	89.96	270.87	7,314.5	-321.0	-3,029.3	3,042.0	0.86	-0.84	-0.18
11,992.0	89.52	270.34	7,315.0	-320.0	-3,123.3	3,135.8	0.73	-0.47	-0.56
12,087.0	88.90	269.29	7,316.3	-320.3	-3,218.3	3,230.7	1.28	-0.65	-1.11
12,181.0	88.46	269.29	7,318.4	-321.5	-3,312.3	3,324.6	0.47	-0.47	0.00
12,275.0	90.13	268.76	7,319.6	-323.1	-3,406.2	3,418.5	1.86	1.78	-0.56
12,370.0	89.87	268.58	7,319.6	-325.3	-3,501.2	3,513.5	0.33	-0.27	-0.19
12,464.0	91.36	268.58	7,318.6	-327.6	-3,595.2	3,607.4	1.59	1.59	0.00
12,558.0	91.63	268.76	7,316.1	-329.8	-3,689.1	3,701.4	0.35	0.29	0.19
12,652.0	91.01	268.23	7,314.0	-332.2	-3,783.1	3,795.3	0.87	-0.66	-0.56
12,746.0	92.15	269.46	7,311.4	-334.1	-3,877.0	3,889.2	1.78	1.21	1.31
12,841.0	91.89	269.46	7,308.0	-335.0	-3,971.9	3,984.1	0.27	-0.27	0.00
12,935.0	93.21	269.46	7,303.9	-335.9	-4,065.8	4,077.9	1.40	1.40	0.00
13,030.0	94.00	270.34	7,297.9	-336.1	-4,160.6	4,172.6	1.24	0.83	0.93
13,124.0	92.07	269.81	7,292.9	-336.0	-4,254.5	4,266.3	2.13	-2.05	-0.56
13,219.0	92.15	268.23	7,289.4	-337.6	-4,349.4	4,361.2	1.66	0.08	-1.66
13,314.0	91.98	268.41	7,286.0	-340.4	-4,444.3	4,456.1	0.26	-0.18	0.19

<b>Company:</b>	Bayswater Exploration & Production, LLC	<b>Local Co-ordinate Reference:</b>	Well COT WEST P-30-25HN
<b>Project:</b>	SEC.30-T7N-R66W	<b>TVD Reference:</b>	WELL @ 4971.0ft (Original Well Elev)
<b>Site:</b>	COT 30J Pad Sec.30-T7N-R66W	<b>MD Reference:</b>	WELL @ 4971.0ft (Original Well Elev)
<b>Well:</b>	COT WEST P-30-25HN	<b>North Reference:</b>	True
<b>Wellbore:</b>	COT WEST P-30-25HN Wellbore #1	<b>Survey Calculation Method:</b>	Minimum Curvature
<b>Design:</b>	COT WEST P-30-25HN Wellbore #1	<b>Database:</b>	US_EDM

Survey									
Measured Depth (ft)	Inclination (°)	Azimuth (°)	Vertical Depth (ft)	+N/-S (ft)	+E/-W (ft)	Vertical Section (ft)	Dogleg Rate (°/100usft)	Build Rate (°/100usft)	Turn Rate (°/100usft)
13,408.0	92.15	267.88	7,282.6	-343.4	-4,538.2	4,550.0	0.59	0.18	-0.56
13,503.0	91.89	268.76	7,279.2	-346.2	-4,633.1	4,644.9	0.97	-0.27	0.93
13,597.0	92.15	268.76	7,275.9	-348.2	-4,727.0	4,738.8	0.28	0.28	0.00
13,692.0	92.77	269.81	7,271.9	-349.4	-4,821.9	4,833.6	1.28	0.65	1.11
13,787.0	92.68	269.64	7,267.3	-349.9	-4,916.8	4,928.4	0.20	-0.09	-0.18
13,882.0	92.86	269.29	7,262.8	-350.8	-5,011.7	5,023.2	0.41	0.19	-0.37
13,976.0	92.07	268.58	7,258.7	-352.5	-5,105.6	5,117.1	1.13	-0.84	-0.76
14,071.0	91.54	268.41	7,255.7	-355.0	-5,200.5	5,212.0	0.59	-0.56	-0.18
14,165.0	92.15	269.99	7,252.7	-356.3	-5,294.5	5,305.9	1.80	0.65	1.68
14,260.0	92.59	270.17	7,248.8	-356.2	-5,389.4	5,400.7	0.50	0.46	0.19
14,354.0	92.95	269.99	7,244.2	-356.0	-5,483.3	5,494.4	0.43	0.38	-0.19
14,448.0	93.03	269.29	7,239.3	-356.6	-5,577.1	5,588.2	0.75	0.09	-0.74
14,543.0	90.57	268.23	7,236.3	-358.7	-5,672.1	5,683.1	2.82	-2.59	-1.12
14,638.0	90.84	268.06	7,235.2	-361.8	-5,767.0	5,778.1	0.34	0.28	-0.18
14,733.0	90.48	269.81	7,234.1	-363.5	-5,862.0	5,873.0	1.88	-0.38	1.84
14,827.0	90.66	269.29	7,233.1	-364.3	-5,956.0	5,966.9	0.59	0.19	-0.55
14,922.0	90.22	269.11	7,232.4	-365.6	-6,051.0	6,061.8	0.50	-0.46	-0.19
15,016.0	91.89	268.58	7,230.7	-367.5	-6,144.9	6,155.7	1.86	1.78	-0.56
15,111.0	92.07	270.17	7,227.4	-368.5	-6,239.9	6,250.6	1.68	0.19	1.67
15,205.0	92.51	269.99	7,223.6	-368.4	-6,333.8	6,344.4	0.51	0.47	-0.19
15,299.0	92.86	269.81	7,219.2	-368.6	-6,427.7	6,438.2	0.42	0.37	-0.19
15,393.0	93.39	269.99	7,214.1	-368.7	-6,521.5	6,531.9	0.60	0.56	0.19
15,487.0	93.47	269.99	7,208.5	-368.7	-6,615.4	6,625.6	0.09	0.09	0.00
15,582.0	93.83	269.81	7,202.4	-368.9	-6,710.2	6,720.3	0.42	0.38	-0.19
15,676.0	93.91	269.64	7,196.1	-369.4	-6,804.0	6,814.0	0.20	0.09	-0.18
15,771.0	94.35	268.94	7,189.2	-370.5	-6,898.7	6,908.6	0.87	0.46	-0.74
15,865.0	95.06	269.11	7,181.5	-372.1	-6,992.4	7,002.3	0.78	0.76	0.18
15,897.0	95.41	269.29	7,178.6	-372.6	-7,024.2	7,034.1	1.23	1.09	0.56
15,957.0	95.41	269.29	7,173.0	-373.3	-7,084.0	7,093.8	0.00	0.00	0.00

Design Targets									
Target Name	Dip Angle (°)	Dip Dir. (°)	TVD (ft)	+N/-S (ft)	+E/-W (ft)	Northing (usft)	Easting (usft)	Latitude	Longitude
SHL 2197'FNL & 1973'F - hit/miss target - Shape - Point	0.00	0.00	1.0	0.0	0.0	1,441,762.98	3,187,616.76	40.544079	-104.824915
BHL 1880'FSL & 150'FW - survey misses target center by 48.1ft at 15955.2ft MD (7173.1 TVD, -373.3 N, -7082.1 E) - Point	0.00	0.00	7,221.0	-372.0	-7,086.7	1,441,337.01	3,180,533.32	40.543055	-104.850413

<b>Company:</b>	Bayswater Exploration & Production, LLC	<b>Local Co-ordinate Reference:</b>	Well COT WEST P-30-25HN
<b>Project:</b>	SEC.30-T7N-R66W	<b>TVD Reference:</b>	WELL @ 4971.0ft (Original Well Elev)
<b>Site:</b>	COT 30J Pad Sec.30-T7N-R66W	<b>MD Reference:</b>	WELL @ 4971.0ft (Original Well Elev)
<b>Well:</b>	COT WEST P-30-25HN	<b>North Reference:</b>	True
<b>Wellbore:</b>	COT WEST P-30-25HN Wellbore #1	<b>Survey Calculation Method:</b>	Minimum Curvature
<b>Design:</b>	COT WEST P-30-25HN Wellbore #1	<b>Database:</b>	US_EDM

Survey Annotations				
Measured Depth (ft)	Vertical Depth (ft)	Local Coordinates		Comment
		+N/-S (ft)	+E/-W (ft)	
7,964.4	7,343.9	-282.2	902.7	TPZ - 1902'FSL & 2544'FEL, Sec.30

Checked By: \_\_\_\_\_ Approved By: \_\_\_\_\_ Date: \_\_\_\_\_