

# Bayswater Exploration & Production, LLC

Well Name: **COT WEST N-30-25HC**

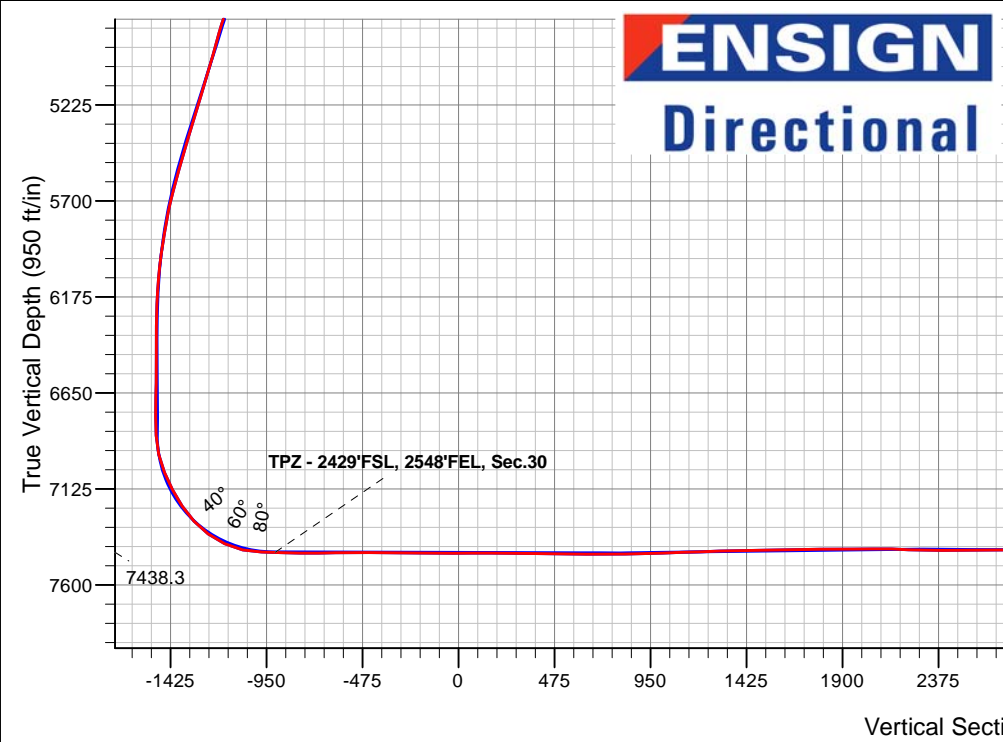
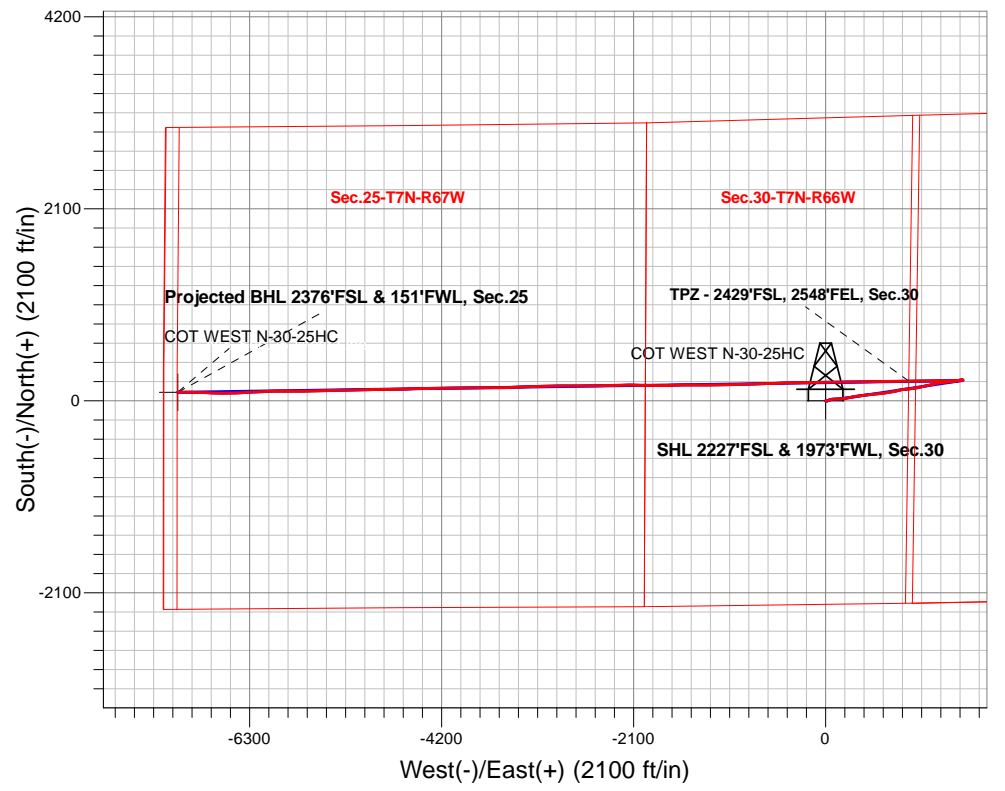
Surface Location: COT 30J Pad Sec.30-T7N-R66W  
 North American Datum 1983 , US State Plane 1983, Colorado Northern Zone  
 Ground Elevation: 4946.0

+N/-S	+E/-W	Northing	Easting	Latitude	Longitude	Slot
0.0	0.0	1441793.21	3187616.80	40.544162	-104.824914	

Original Well Elev WELL @ 4971.0ft (Original Well Elev)

## FINAL SURVEY

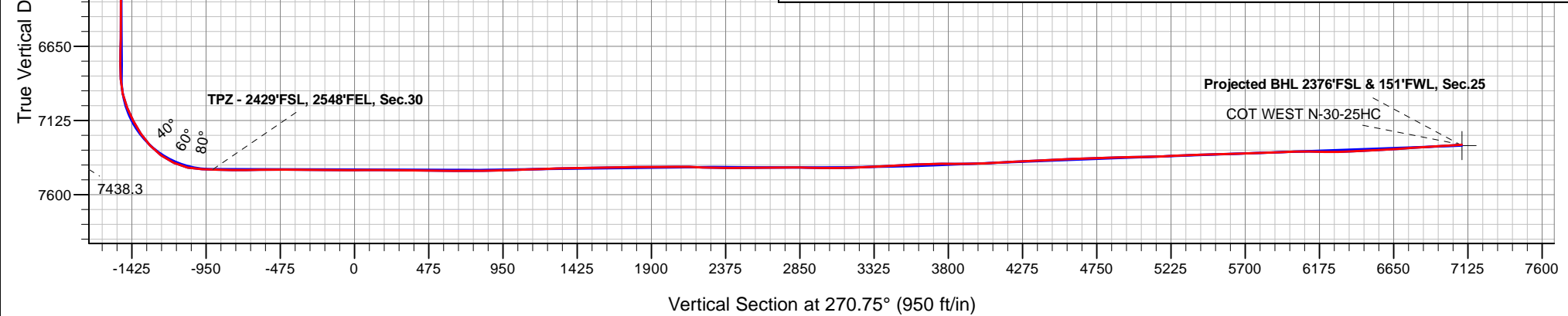
**Projected Bottom Hole Location**  
**15,996'MD 7280'TVD 94'N & 7086'W of SHL**  
**93.47 degree Incl @ 270.69 degree AZM**



COT 30J Pad Sec.30-T7N-R66W  
 COT WEST N-30-25HC  
 COT WEST N-30-25HC Wellbore #1  
 10:34, April 13 2020

ANNOTATIONS		
TVD	MD	Annotation
7438.3	7993.4	TPZ - 2429'FSL, 2548'FEL, Sec.30

LEGEND	
	COT WEST N-30-25HC, COT WEST N-30-25HC Wellbore #1, Plan #4 (4-3-20) V0
	COT WEST N-30-25HC Wellbore #1
	Survey #1





# **Bayswater Exploration & Production, LLC**

**SEC.30-T7N-R66W**

**COT 30J Pad Sec.30-T7N-R66W**

**COT WEST N-30-25HC**

**COT WEST N-30-25HC Wellbore #1**

**Survey: Survey #1**

## **Standard Survey Report**

**13 April, 2020**



<b>Company:</b>	Bayswater Exploration & Production, LLC	<b>Local Co-ordinate Reference:</b>	Well COT WEST N-30-25HC
<b>Project:</b>	SEC.30-T7N-R66W	<b>TVD Reference:</b>	WELL @ 4971.0ft (Original Well Elev)
<b>Site:</b>	COT 30J Pad Sec.30-T7N-R66W	<b>MD Reference:</b>	WELL @ 4971.0ft (Original Well Elev)
<b>Well:</b>	COT WEST N-30-25HC	<b>North Reference:</b>	True
<b>Wellbore:</b>	COT WEST N-30-25HC Wellbore #1	<b>Survey Calculation Method:</b>	Minimum Curvature
<b>Design:</b>	COT WEST N-30-25HC Wellbore #1	<b>Database:</b>	US_EDM

<b>Project</b>	SEC.30-T7N-R66W, Weld County, CO		
<b>Map System:</b>	US State Plane 1983	<b>System Datum:</b>	Mean Sea Level
<b>Geo Datum:</b>	North American Datum 1983		Using Well Reference Point
<b>Map Zone:</b>	Colorado Northern Zone		Using geodetic scale factor

<b>Site</b>	COT 30J Pad Sec.30-T7N-R66W				
<b>Site Position:</b>		<b>Northing:</b>	1,441,808.15 usft	<b>Latitude:</b>	40.544203
<b>From:</b>	Lat/Long	<b>Easting:</b>	3,187,616.69 usft	<b>Longitude:</b>	-104.824914
<b>Position Uncertainty:</b>	0.0 ft	<b>Slot Radius:</b>	13-3/16 "	<b>Grid Convergence:</b>	0.44 °

<b>Well</b>	COT WEST N-30-25HC					
<b>Well Position</b>	<b>+N/-S</b>	0.0 ft	<b>Northing:</b>	1,441,793.21 usft	<b>Latitude:</b>	40.544162
	<b>+E/-W</b>	0.0 ft	<b>Easting:</b>	3,187,616.80 usft	<b>Longitude:</b>	-104.824914
<b>Position Uncertainty</b>		0.0 ft	<b>Wellhead Elevation:</b>	0.0 ft	<b>Ground Level:</b>	4,946.0 ft

<b>Wellbore</b>	COT WEST N-30-25HC Wellbore #1				
<b>Magnetics</b>	<b>Model Name</b>	<b>Sample Date</b>	<b>Declination (°)</b>	<b>Dip Angle (°)</b>	<b>Field Strength (nT)</b>
	HDGM	04/03/2020	7.90	66.87	52,215

<b>Design</b>	COT WEST N-30-25HC Wellbore #1				
<b>Audit Notes:</b>					
<b>Version:</b>	1.0	<b>Phase:</b>	ACTUAL	<b>Tie On Depth:</b>	0.0
<b>Vertical Section:</b>	<b>Depth From (TVD) (ft)</b>	<b>+N/-S (ft)</b>	<b>+E/-W (ft)</b>	<b>Direction (°)</b>	
	0.0	0.0	0.0	270.75	

<b>Survey Program</b>	<b>Date</b>	04/13/2020			
<b>From (ft)</b>	<b>To (ft)</b>	<b>Survey (Wellbore)</b>	<b>Tool Name</b>	<b>Description</b>	
311.0	15,996.0	Survey #1 (COT WEST N-30-25HC Wellbo	MWD	MWD - Standard	

<b>Survey</b>										
<b>Measured Depth (ft)</b>	<b>Inclination (°)</b>	<b>Azimuth (°)</b>	<b>Vertical Depth (ft)</b>	<b>+N/-S (ft)</b>	<b>+E/-W (ft)</b>	<b>Vertical Section (ft)</b>	<b>Dogleg Rate (°/100usft)</b>	<b>Build Rate (°/100usft)</b>	<b>Turn Rate (°/100usft)</b>	
0.0	0.00	0.00	0.0	0.0	0.0	0.0	0.00	0.00	0.00	
311.0	1.41	114.09	311.0	-1.6	3.5	-3.5	0.45	0.45	0.00	
406.0	2.11	99.85	405.9	-2.3	6.3	-6.3	0.86	0.74	-14.99	
501.0	2.64	81.92	500.8	-2.3	10.2	-10.2	0.95	0.56	-18.87	
596.0	3.34	73.31	595.7	-1.2	15.0	-15.0	0.87	0.74	-9.06	
691.0	4.31	69.80	690.5	0.8	21.0	-21.0	1.05	1.02	-3.69	
785.0	5.10	70.67	784.2	3.4	28.2	-28.2	0.84	0.84	0.93	
880.0	6.16	65.40	878.7	6.9	36.9	-36.8	1.24	1.12	-5.55	
974.0	7.12	78.76	972.1	10.2	47.2	-47.0	1.93	1.02	14.21	
1,069.0	7.12	74.19	1,066.4	12.9	58.6	-58.4	0.60	0.00	-4.81	

<b>Company:</b>	Bayswater Exploration & Production, LLC	<b>Local Co-ordinate Reference:</b>	Well COT WEST N-30-25HC
<b>Project:</b>	SEC.30-T7N-R66W	<b>TVD Reference:</b>	WELL @ 4971.0ft (Original Well Elev)
<b>Site:</b>	COT 30J Pad Sec.30-T7N-R66W	<b>MD Reference:</b>	WELL @ 4971.0ft (Original Well Elev)
<b>Well:</b>	COT WEST N-30-25HC	<b>North Reference:</b>	True
<b>Wellbore:</b>	COT WEST N-30-25HC Wellbore #1	<b>Survey Calculation Method:</b>	Minimum Curvature
<b>Design:</b>	COT WEST N-30-25HC Wellbore #1	<b>Database:</b>	US_EDM

Survey										
Measured Depth (ft)	Inclination (°)	Azimuth (°)	Vertical Depth (ft)	+N/-S (ft)	+E/-W (ft)	Vertical Section (ft)	Dogleg Rate (°/100usft)	Build Rate (°/100usft)	Turn Rate (°/100usft)	
1,164.0	8.71	81.40	1,160.5	15.6	71.4	-71.2	1.97	1.67	7.59	
1,259.0	10.02	86.67	1,254.2	17.1	86.7	-86.5	1.65	1.38	5.55	
1,354.0	10.46	87.02	1,347.7	18.1	103.6	-103.4	0.47	0.46	0.37	
1,449.0	11.08	85.79	1,441.0	19.2	121.3	-121.1	0.70	0.65	-1.29	
1,506.0	12.13	85.79	1,496.8	20.0	132.8	-132.5	1.84	1.84	0.00	
1,665.0	15.21	85.60	1,651.3	22.9	170.2	-169.9	1.94	1.94	-0.12	
1,759.0	16.53	86.12	1,741.7	24.7	195.9	-195.5	1.41	1.40	0.55	
1,854.0	17.59	80.67	1,832.6	28.0	223.5	-223.1	2.02	1.12	-5.74	
1,949.0	17.23	78.56	1,923.2	33.1	251.5	-251.0	0.76	-0.38	-2.22	
2,043.0	16.71	76.81	2,013.1	38.9	278.3	-277.7	0.78	-0.55	-1.86	
2,138.0	16.71	80.32	2,104.1	44.3	305.0	-304.4	1.06	0.00	3.69	
2,233.0	17.85	82.78	2,194.8	48.5	332.9	-332.3	1.43	1.20	2.59	
2,326.0	17.41	81.20	2,283.4	52.4	360.8	-360.1	0.70	-0.47	-1.70	
2,420.0	18.47	83.31	2,372.9	56.3	389.5	-388.8	1.32	1.13	2.24	
2,515.0	17.67	82.08	2,463.2	60.0	418.7	-417.9	0.93	-0.84	-1.29	
2,609.0	19.52	84.01	2,552.3	63.6	448.5	-447.6	2.07	1.97	2.05	
2,704.0	18.64	83.84	2,642.1	66.9	479.4	-478.5	0.93	-0.93	-0.18	
2,798.0	17.59	83.13	2,731.4	70.2	508.4	-507.5	1.14	-1.12	-0.76	
2,893.0	20.05	84.54	2,821.3	73.5	538.9	-537.9	2.63	2.59	1.48	
2,988.0	19.43	83.49	2,910.7	76.8	570.8	-569.7	0.75	-0.65	-1.11	
3,083.0	17.94	84.19	3,000.7	80.1	601.1	-600.0	1.59	-1.57	0.74	
3,177.0	16.44	83.66	3,090.5	83.0	628.7	-627.5	1.60	-1.60	-0.56	
3,272.0	17.94	82.78	3,181.3	86.3	656.6	-655.4	1.60	1.58	-0.93	
3,390.0	15.65	82.43	3,294.2	90.7	690.4	-689.1	1.94	-1.94	-0.30	
3,484.0	16.44	76.63	3,384.6	95.5	715.9	-714.6	1.90	0.84	-6.17	
3,579.0	16.88	76.45	3,475.6	101.8	742.4	-741.0	0.47	0.46	-0.19	
3,673.0	17.59	77.16	3,565.4	108.2	769.5	-768.0	0.79	0.76	0.76	
3,768.0	18.20	81.03	3,655.8	113.7	798.1	-796.6	1.41	0.64	4.07	
3,863.0	15.92	76.28	3,746.6	119.1	825.4	-823.8	2.81	-2.40	-5.00	
3,957.0	17.50	80.85	3,836.6	124.4	851.9	-850.2	2.18	1.68	4.86	
4,052.0	20.40	85.60	3,926.5	127.9	882.5	-880.8	3.46	3.05	5.00	
4,146.0	20.49	84.72	4,014.6	130.7	915.3	-913.5	0.34	0.10	-0.94	
4,241.0	20.49	84.19	4,103.5	133.9	948.4	-946.5	0.20	0.00	-0.56	
4,335.0	18.91	81.38	4,192.0	137.9	979.8	-977.9	1.96	-1.68	-2.99	
4,430.0	17.32	79.62	4,282.3	142.7	1,008.9	-1,007.0	1.77	-1.67	-1.85	
4,525.0	17.76	77.86	4,372.9	148.3	1,037.0	-1,035.0	0.73	0.46	-1.85	
4,619.0	18.11	77.86	4,462.3	154.4	1,065.3	-1,063.2	0.37	0.37	0.00	
4,714.0	16.71	75.22	4,553.0	161.0	1,092.9	-1,090.7	1.69	-1.47	-2.78	
4,808.0	17.59	76.10	4,642.8	167.8	1,119.8	-1,117.5	0.98	0.94	0.94	
4,903.0	16.62	75.05	4,733.6	174.8	1,146.9	-1,144.5	1.07	-1.02	-1.11	
4,997.0	17.59	78.21	4,823.5	181.2	1,173.7	-1,171.3	1.43	1.03	3.36	
5,092.0	16.27	79.27	4,914.3	186.6	1,200.9	-1,198.3	1.43	-1.39	1.12	
5,186.0	14.86	78.56	5,004.9	191.4	1,225.6	-1,223.0	1.51	-1.50	-0.76	
5,281.0	17.06	81.38	5,096.2	195.9	1,251.4	-1,248.7	2.45	2.32	2.97	

<b>Company:</b>	Bayswater Exploration & Production, LLC	<b>Local Co-ordinate Reference:</b>	Well COT WEST N-30-25HC
<b>Project:</b>	SEC.30-T7N-R66W	<b>TVD Reference:</b>	WELL @ 4971.0ft (Original Well Elev)
<b>Site:</b>	COT 30J Pad Sec.30-T7N-R66W	<b>MD Reference:</b>	WELL @ 4971.0ft (Original Well Elev)
<b>Well:</b>	COT WEST N-30-25HC	<b>North Reference:</b>	True
<b>Wellbore:</b>	COT WEST N-30-25HC Wellbore #1	<b>Survey Calculation Method:</b>	Minimum Curvature
<b>Design:</b>	COT WEST N-30-25HC Wellbore #1	<b>Database:</b>	US_EDM

Survey										
Measured Depth (ft)	Inclination (°)	Azimuth (°)	Vertical Depth (ft)	+N/-S (ft)	+E/-W (ft)	Vertical Section (ft)	Dogleg Rate (°/100usft)	Build Rate (°/100usft)	Turn Rate (°/100usft)	
5,375.0	18.11	84.89	5,185.8	199.3	1,279.5	-1,276.8	1.59	1.12	3.73	
5,469.0	15.74	82.43	5,275.7	202.3	1,306.7	-1,304.0	2.63	-2.52	-2.62	
5,564.0	16.00	82.26	5,367.1	205.7	1,332.5	-1,329.7	0.28	0.27	-0.18	
5,658.0	16.88	87.70	5,457.3	208.0	1,359.0	-1,356.1	1.89	0.94	5.79	
5,753.0	17.06	84.54	5,548.2	209.9	1,386.6	-1,383.7	0.99	0.19	-3.33	
5,847.0	14.60	82.43	5,638.6	212.8	1,412.1	-1,409.2	2.69	-2.62	-2.24	
5,941.0	12.31	78.04	5,730.0	216.4	1,433.6	-1,430.7	2.67	-2.44	-4.67	
6,036.0	9.85	73.99	5,823.2	220.8	1,451.4	-1,448.3	2.71	-2.59	-4.26	
6,131.0	9.32	78.39	5,916.9	224.5	1,466.7	-1,463.6	0.95	-0.56	4.63	
6,225.0	7.12	84.36	6,009.9	226.7	1,480.0	-1,476.9	2.51	-2.34	6.35	
6,320.0	3.61	88.76	6,104.5	227.3	1,488.8	-1,485.7	3.72	-3.69	4.63	
6,415.0	3.17	84.89	6,199.3	227.6	1,494.4	-1,491.3	0.52	-0.46	-4.07	
6,509.0	0.79	113.19	6,293.3	227.6	1,497.6	-1,494.5	2.66	-2.53	30.11	
6,604.0	0.70	212.51	6,388.3	226.8	1,497.9	-1,494.8	1.20	-0.09	104.55	
6,699.0	0.62	105.46	6,483.3	226.2	1,498.1	-1,495.0	1.12	-0.08	-112.68	
6,793.0	0.62	113.19	6,577.3	225.9	1,499.0	-1,495.9	0.09	0.00	8.22	
6,887.0	0.88	111.61	6,671.2	225.4	1,500.2	-1,497.1	0.28	0.28	-1.68	
6,982.0	0.70	95.26	6,766.2	225.1	1,501.4	-1,498.3	0.30	-0.19	-17.21	
7,076.0	2.81	272.98	6,860.2	225.1	1,499.7	-1,496.6	3.73	2.24	189.06	
7,171.0	13.98	264.89	6,954.0	224.2	1,485.9	-1,482.8	11.79	11.76	-8.52	
7,265.0	21.28	266.12	7,043.6	222.1	1,457.5	-1,454.5	7.78	7.77	1.31	
7,359.0	27.52	269.11	7,129.1	220.6	1,418.8	-1,415.7	6.77	6.64	3.18	
7,454.0	34.29	267.53	7,210.6	219.1	1,370.0	-1,367.0	7.18	7.13	-1.66	
7,549.0	42.65	269.46	7,284.9	217.6	1,311.0	-1,308.0	8.89	8.80	2.03	
7,643.0	53.29	270.17	7,347.8	217.4	1,241.3	-1,238.3	11.33	11.32	0.76	
7,738.0	65.07	270.69	7,396.3	218.1	1,159.8	-1,156.9	12.41	12.40	0.55	
7,832.0	78.26	268.41	7,425.9	217.3	1,070.8	-1,067.9	14.22	14.03	-2.43	
7,926.0	88.81	269.81	7,436.4	215.9	977.6	-974.6	11.32	11.22	1.49	
7,993.4	87.94	268.94	7,438.3	215.1	910.2	-907.3	1.83	-1.29	-1.29	
<b>TPZ - 2429'FSL, 2548'FEL, Sec.30</b>										
8,021.0	87.58	268.58	7,439.4	214.5	882.6	-879.7	1.83	-1.29	-1.30	
8,116.0	88.64	269.29	7,442.5	212.8	787.7	-784.8	1.34	1.12	0.75	
8,210.0	92.07	269.46	7,442.0	211.7	693.7	-690.9	3.65	3.65	0.18	
8,305.0	90.40	269.81	7,439.9	211.1	598.7	-595.9	1.80	-1.76	0.37	
8,400.0	90.04	269.46	7,439.6	210.5	503.7	-500.9	0.53	-0.38	-0.37	
8,494.0	89.96	268.58	7,439.6	208.9	409.8	-407.0	0.94	-0.09	-0.94	
8,589.0	89.25	268.94	7,440.2	206.9	314.8	-312.0	0.84	-0.75	0.38	
8,684.0	89.43	269.11	7,441.3	205.2	219.8	-217.1	0.26	0.19	0.18	
8,779.0	88.81	269.29	7,442.8	203.9	124.8	-122.1	0.68	-0.65	0.19	
8,873.0	90.57	268.94	7,443.3	202.5	30.8	-28.2	1.91	1.87	-0.37	
8,968.0	90.31	269.81	7,442.5	201.4	-64.2	66.8	0.96	-0.27	0.92	
9,063.0	89.60	268.94	7,442.6	200.4	-159.1	161.8	1.18	-0.75	-0.92	
9,158.0	89.60	269.11	7,443.3	198.8	-254.1	256.7	0.18	0.00	0.18	

<b>Company:</b>	Bayswater Exploration & Production, LLC	<b>Local Co-ordinate Reference:</b>	Well COT WEST N-30-25HC
<b>Project:</b>	SEC.30-T7N-R66W	<b>TVD Reference:</b>	WELL @ 4971.0ft (Original Well Elev)
<b>Site:</b>	COT 30J Pad Sec.30-T7N-R66W	<b>MD Reference:</b>	WELL @ 4971.0ft (Original Well Elev)
<b>Well:</b>	COT WEST N-30-25HC	<b>North Reference:</b>	True
<b>Wellbore:</b>	COT WEST N-30-25HC Wellbore #1	<b>Survey Calculation Method:</b>	Minimum Curvature
<b>Design:</b>	COT WEST N-30-25HC Wellbore #1	<b>Database:</b>	US_EDM

Survey									
Measured Depth (ft)	Inclination (°)	Azimuth (°)	Vertical Depth (ft)	+N/-S (ft)	+E/-W (ft)	Vertical Section (ft)	Dogleg Rate (°/100usft)	Build Rate (°/100usft)	Turn Rate (°/100usft)
9,253.0	89.43	268.76	7,444.1	197.0	-349.1	351.7	0.41	-0.18	-0.37
9,347.0	89.52	268.41	7,444.9	194.7	-443.1	445.6	0.38	0.10	-0.37
9,442.0	89.16	268.23	7,446.0	191.9	-538.0	540.5	0.42	-0.38	-0.19
9,537.0	89.60	268.06	7,447.1	188.8	-633.0	635.4	0.50	0.46	-0.18
9,631.0	89.34	267.53	7,447.9	185.2	-726.9	729.3	0.63	-0.28	-0.56
9,725.0	91.89	268.94	7,446.9	182.3	-820.8	823.2	3.10	2.71	1.50
9,819.0	90.84	267.88	7,444.7	179.7	-914.8	917.0	1.59	-1.12	-1.13
9,913.0	91.98	268.41	7,442.4	176.7	-1,008.7	1,010.9	1.34	1.21	0.56
10,008.0	92.24	268.58	7,438.9	174.2	-1,103.6	1,105.8	0.33	0.27	0.18
10,101.0	91.89	269.64	7,435.5	172.7	-1,196.5	1,198.7	1.20	-0.38	1.14
10,196.0	92.15	269.81	7,432.2	172.3	-1,291.5	1,293.6	0.33	0.27	0.18
10,291.0	90.66	269.46	7,429.8	171.7	-1,386.4	1,388.6	1.61	-1.57	-0.37
10,385.0	91.63	270.69	7,428.0	171.8	-1,480.4	1,482.5	1.67	1.03	1.31
10,480.0	90.57	269.64	7,426.1	172.1	-1,575.4	1,577.5	1.57	-1.12	-1.11
10,574.0	91.01	268.58	7,424.9	170.6	-1,669.4	1,671.5	1.22	0.47	-1.13
10,669.0	90.48	267.88	7,423.6	167.7	-1,764.3	1,766.4	0.92	-0.56	-0.74
10,764.0	90.66	271.22	7,422.7	166.9	-1,859.3	1,861.3	3.52	0.19	3.52
10,858.0	89.52	270.69	7,422.5	168.5	-1,953.3	1,955.3	1.34	-1.21	-0.56
10,952.0	92.07	272.10	7,421.2	170.8	-2,047.2	2,049.3	3.10	2.71	1.50
11,047.0	87.67	269.11	7,421.4	171.8	-2,142.2	2,144.3	5.60	-4.63	-3.15
11,141.0	87.32	268.76	7,425.5	170.0	-2,236.1	2,238.1	0.53	-0.37	-0.37
11,235.0	89.08	268.76	7,428.5	168.0	-2,330.0	2,332.0	1.87	1.87	0.00
11,329.0	90.04	268.76	7,429.2	166.0	-2,424.0	2,426.0	1.02	1.02	0.00
11,424.0	90.48	269.29	7,428.8	164.4	-2,519.0	2,520.9	0.73	0.46	0.56
11,519.0	91.28	269.46	7,427.3	163.3	-2,614.0	2,615.9	0.86	0.84	0.18
11,612.0	91.19	269.64	7,425.3	162.6	-2,706.9	2,708.8	0.22	-0.10	0.19
11,706.0	89.34	269.99	7,424.9	162.3	-2,800.9	2,802.8	2.00	-1.97	0.37
11,801.0	87.93	269.99	7,427.2	162.3	-2,895.9	2,897.8	1.48	-1.48	0.00
11,895.0	89.34	269.11	7,429.4	161.5	-2,989.9	2,991.7	1.77	1.50	-0.94
11,989.0	90.48	268.76	7,429.5	159.8	-3,083.8	3,085.7	1.27	1.21	-0.37
12,083.0	92.68	267.70	7,426.9	156.9	-3,177.8	3,179.5	2.60	2.34	-1.13
12,177.0	92.33	267.70	7,422.8	153.1	-3,271.6	3,273.3	0.37	-0.37	0.00
12,272.0	91.98	267.35	7,419.3	149.0	-3,366.4	3,368.1	0.52	-0.37	-0.37
12,366.0	94.00	268.76	7,414.4	145.8	-3,460.2	3,461.9	2.62	2.15	1.50
12,461.0	94.00	268.41	7,407.7	143.5	-3,555.0	3,556.6	0.37	0.00	-0.37
12,556.0	90.31	270.87	7,404.2	142.9	-3,649.9	3,651.4	4.67	-3.88	2.59
12,650.0	90.40	269.64	7,403.6	143.3	-3,743.9	3,745.4	1.31	0.10	-1.31
12,745.0	90.57	269.46	7,402.8	142.6	-3,838.9	3,840.4	0.26	0.18	-0.19
12,840.0	90.75	268.94	7,401.7	141.2	-3,933.9	3,935.4	0.58	0.19	-0.55
12,935.0	91.98	268.58	7,399.4	139.2	-4,028.8	4,030.3	1.35	1.29	-0.38
13,029.0	93.12	269.29	7,395.2	137.4	-4,122.7	4,124.1	1.43	1.21	0.76
13,124.0	93.56	269.46	7,389.7	136.4	-4,217.5	4,219.0	0.50	0.46	0.18
13,219.0	93.83	269.64	7,383.6	135.7	-4,312.3	4,313.7	0.34	0.28	0.19
13,314.0	92.07	268.41	7,378.7	134.0	-4,407.2	4,408.6	2.26	-1.85	-1.29

<b>Company:</b>	Bayswater Exploration & Production, LLC	<b>Local Co-ordinate Reference:</b>	Well COT WEST N-30-25HC
<b>Project:</b>	SEC.30-T7N-R66W	<b>TVD Reference:</b>	WELL @ 4971.0ft (Original Well Elev)
<b>Site:</b>	COT 30J Pad Sec.30-T7N-R66W	<b>MD Reference:</b>	WELL @ 4971.0ft (Original Well Elev)
<b>Well:</b>	COT WEST N-30-25HC	<b>North Reference:</b>	True
<b>Wellbore:</b>	COT WEST N-30-25HC Wellbore #1	<b>Survey Calculation Method:</b>	Minimum Curvature
<b>Design:</b>	COT WEST N-30-25HC Wellbore #1	<b>Database:</b>	US_EDM

Survey										
Measured Depth (ft)	Inclination (°)	Azimuth (°)	Vertical Depth (ft)	+N/-S (ft)	+E/-W (ft)	Vertical Section (ft)	Dogleg Rate (°/100usft)	Build Rate (°/100usft)	Turn Rate (°/100usft)	
13,408.0	92.07	268.76	7,375.3	131.7	-4,501.1	4,502.4	0.37	0.00	0.37	
13,503.0	91.71	267.88	7,372.2	128.9	-4,596.0	4,597.3	1.00	-0.38	-0.93	
13,597.0	92.86	268.76	7,368.4	126.2	-4,689.9	4,691.1	1.54	1.22	0.94	
13,692.0	91.89	269.46	7,364.5	124.7	-4,784.8	4,786.0	1.26	-1.02	0.74	
13,787.0	91.71	269.29	7,361.5	123.7	-4,879.7	4,880.9	0.26	-0.19	-0.18	
13,881.0	91.36	268.94	7,359.0	122.2	-4,973.7	4,974.9	0.53	-0.37	-0.37	
13,976.0	90.40	268.41	7,357.5	120.0	-5,068.7	5,069.8	1.15	-1.01	-0.56	
14,071.0	92.59	268.76	7,355.0	117.7	-5,163.6	5,164.7	2.33	2.31	0.37	
14,166.0	93.12	268.23	7,350.3	115.2	-5,258.4	5,259.5	0.79	0.56	-0.56	
14,260.0	91.71	269.64	7,346.3	113.4	-5,352.3	5,353.4	2.12	-1.50	1.50	
14,355.0	92.15	268.76	7,343.1	112.1	-5,447.3	5,448.3	1.04	0.46	-0.93	
14,449.0	91.63	268.58	7,340.0	109.9	-5,541.2	5,542.2	0.59	-0.55	-0.19	
14,544.0	91.01	268.58	7,337.9	107.6	-5,636.1	5,637.1	0.65	-0.65	0.00	
14,638.0	92.24	269.11	7,335.2	105.7	-5,730.1	5,731.0	1.42	1.31	0.56	
14,733.0	92.15	269.99	7,331.6	104.9	-5,825.0	5,825.9	0.93	-0.09	0.93	
14,827.0	92.07	270.34	7,328.1	105.2	-5,918.9	5,919.8	0.38	-0.09	0.37	
14,922.0	91.89	269.81	7,324.8	105.3	-6,013.9	6,014.7	0.59	-0.19	-0.56	
15,017.0	89.08	267.88	7,324.0	103.4	-6,108.8	6,109.7	3.59	-2.96	-2.03	
15,112.0	88.81	266.12	7,325.8	98.5	-6,203.7	6,204.5	1.87	-0.28	-1.85	
15,206.0	91.36	266.12	7,325.6	92.1	-6,297.5	6,298.1	2.71	2.71	0.00	
15,301.0	93.03	268.06	7,322.0	87.3	-6,392.3	6,392.9	2.69	1.76	2.04	
15,395.0	92.77	269.29	7,317.2	85.1	-6,486.1	6,486.7	1.34	-0.28	1.31	
15,489.0	92.86	270.69	7,312.6	85.1	-6,580.0	6,580.6	1.49	0.10	1.49	
15,584.0	94.18	271.22	7,306.8	86.7	-6,674.8	6,675.4	1.50	1.39	0.56	
15,678.0	93.91	271.04	7,300.1	88.5	-6,768.6	6,769.1	0.34	-0.29	-0.19	
15,773.0	93.74	271.22	7,293.8	90.4	-6,863.3	6,863.9	0.26	-0.18	0.19	
15,868.0	93.56	271.22	7,287.8	92.4	-6,958.1	6,958.7	0.19	-0.19	0.00	
15,936.0	93.47	270.69	7,283.6	93.5	-7,026.0	7,026.6	0.79	-0.13	-0.78	
15,996.0	93.47	270.69	7,280.0	94.3	-7,085.9	7,086.5	0.00	0.00	0.00	

Design Targets										
Target Name	Dip Angle (°)	Dip Dir. (°)	TVD (ft)	+N/-S (ft)	+E/-W (ft)	Northing (usft)	Easting (usft)	Latitude	Longitude	
SHL 2227'FSL & 1973'F1 - hit/miss target - Shape - Point	0.00	0.00	1.0	0.0	0.0	1,441,793.22	3,187,616.80	40.544162	-104.824914	
Projected BHL 2376'FSL - survey misses target center by 6.2ft at 15996.0ft MD (7280.0 TVD, 94.3 N, -7085.9 E) - Point	0.00	0.00	7,286.0	92.8	-7,086.6	1,441,832.09	3,180,529.97	40.544414	-104.850412	

<b>Company:</b>	Bayswater Exploration & Production, LLC	<b>Local Co-ordinate Reference:</b>	Well COT WEST N-30-25HC
<b>Project:</b>	SEC.30-T7N-R66W	<b>TVD Reference:</b>	WELL @ 4971.0ft (Original Well Elev)
<b>Site:</b>	COT 30J Pad Sec.30-T7N-R66W	<b>MD Reference:</b>	WELL @ 4971.0ft (Original Well Elev)
<b>Well:</b>	COT WEST N-30-25HC	<b>North Reference:</b>	True
<b>Wellbore:</b>	COT WEST N-30-25HC Wellbore #1	<b>Survey Calculation Method:</b>	Minimum Curvature
<b>Design:</b>	COT WEST N-30-25HC Wellbore #1	<b>Database:</b>	US_EDM

Survey Annotations				
Measured Depth (ft)	Vertical Depth (ft)	Local Coordinates		Comment
		+N/-S (ft)	+E/-W (ft)	
7,993.4	7,438.3	215.1	910.2	TPZ - 2429'FSL, 2548'FEL, Sec.30

Checked By: \_\_\_\_\_ Approved By: \_\_\_\_\_ Date: \_\_\_\_\_