

BJ Cementing Treatment Report

SERVICE SUPERVISOR	Lenny Baeza	RIG	True 38
DISTRICT	Cheyenne, WY	COUNTY	WELD
SERVICE	Cementing	STATE / PROVINCE	CO

WELL GEOMETRY

TYPE	ID (in)	OD (in)	WEIGHT (lb/ft)	MD (ft)	TVD (ft)	EXCESS (%)
Open Hole	8.50	0.00	0.00	15,996.00	7,442.00	10.00
Previous Casing	8.92	9.63	36.00	1,556.00	1,556.00	
Casing	4.78	5.50	20.00	15,986.00	7,442.00	

HARDWARE

Top Plug Used?	Yes	Max Casing Pressure - Rated (psi)	12,640.00
Top Plug Provided By	Non BJ	Max Casing Pressure - Operated (psi)	10,112.00
Top Plug Size	5.500	Pipe Movement	None
Centralizers Used	Yes	Job Pumped Through	Manifold
Centralizers Type	Rigid	Top Connection Thread	BTC
Landing Collar Depth (ft)	15,961	Top Connection Size	5.5

CIRCULATION PRIOR TO JOB

Well Circulated By	Rig	YP Mud In	9
Circulation Prior to Job	Yes	YP Mud Out	9
Circulation Time (min)	240.00	Solids Present at End of Circulation	No
Circulation Rate (bpm)	12.00	10 sec SGS	10
Circulation Volume (bbls)	2880.00	10 min SGS	18
Lost Circulation Prior to Cement Job	No	30 min SGS	20
Mud Density In (ppg)	10.40	Flare Prior to / during the Cement Job	No
Mud Density Out (ppg)	10.10	Gas Present	No
PV Mud In	25	Gas Units	0.00
PV Mud Out	24		

Client: Bayswater Exploration & Production, LLC

Well: COT WEST #N-30-25HC

Well API: 05-123-50503

Start Date: 4/13/2020

End Date: 4/14/2020

Field Ticket #: FT-25713-Z1M7H00201-2014813252



TEMPERATURE

Ambient Temperature (°F)	24.00	Slurry Cement Temperature (°F)	60.00
Mix Water Temperature (°F)	55.00		

FLUID DETAILS

FLUID TYPE	FLUID NAME	DENSITY (ppg)	YIELD (Cu Ft/sk)	H ₂ O REQ (gals/sk)	PLN TOP FLD (ft)	LENGTH (ft)	VOL (sk)	VOL (Cu Ft)	VOL (bbls)
Spacer / Pre Flush / Flush	IntegraGuard EZ Spacer II	12.0000			0.00				28.0000
Spacer / Pre Flush / Flush	IntegraGuard EZ Spacer II	11.5000			0.00				26.0000
Spacer / Pre Flush / Flush	IntegraGuard EZ Spacer II	11.0000			0.00				26.0000
Lead Slurry	BJCem P100.3.01C	13.2000	1.8290	9.86	0.00	6,941.00	980	1793.0000	319.2000
Tail Slurry	BJCem P50.6.02C	13.5000	1.4769	7.45	6,125.00	9,028.00	1540	2275.0000	405.1000
Displacement 2	Retarded Water w/ Clay Protection & Biocide	8.3331				0.00	0	0.0000	10.0000
Displacement Final	Water w/ Clay Protection & Biocide	8.3331			0.00			0.0000	343.3000

FLUID TYPE	FLUID NAME	COMPONENT	CONCENTRATION	UOM
Spacer / Pre Flush / Flush	IntegraGuard EZ Spacer II	WEIGHTING ADDITIVE, W-11	242.6900	PPB
Spacer / Pre Flush / Flush	IntegraGuard EZ Spacer II	RETARDER, R-31	0.5000	PPB
Spacer / Pre Flush / Flush	IntegraGuard EZ Spacer II	RETARDER, R-7C	2.0000	PPB
Spacer / Pre Flush / Flush	IntegraGuard EZ Spacer II	SPACER SURFACTANT, SS-267	1.0000	GPB
Spacer / Pre Flush / Flush	IntegraGuard EZ Spacer II	IntegraGuard GW-86	1.2000	PPB
Spacer / Pre Flush / Flush	IntegraGuard EZ Spacer II	SPACER SURFACTANT, SS-267	1.0000	GPB
Spacer / Pre Flush / Flush	IntegraGuard EZ Spacer II	RETARDER, R-7C	2.0000	PPB
Spacer / Pre Flush / Flush	IntegraGuard EZ Spacer II	IntegraGuard GW-86	1.2000	PPB
Spacer / Pre Flush / Flush	IntegraGuard EZ Spacer II	WEIGHTING ADDITIVE, W-11	242.6900	PPB
Spacer / Pre Flush / Flush	IntegraGuard EZ Spacer II	RETARDER, R-31	0.5000	PPB
Spacer / Pre Flush / Flush	IntegraGuard EZ Spacer II	WEIGHTING ADDITIVE, W-11	242.6900	PPB
Spacer / Pre Flush / Flush	IntegraGuard EZ Spacer II	RETARDER, R-7C	2.0000	PPB
Spacer / Pre Flush / Flush	IntegraGuard EZ Spacer II	IntegraGuard GW-86	1.2000	PPB
Spacer / Pre Flush / Flush	IntegraGuard EZ Spacer II	RETARDER, R-31	0.5000	PPB

Client: Bayswater Exploration & Production, LLC

Well: COT WEST #N-30-25HC

Well API: 05-123-50503

Start Date: 4/13/2020

End Date: 4/14/2020

Field Ticket #: FT-25713-Z1M7H00201-2014813252



Spacer / Pre Flush / Flush	IntegraGuard EZ Spacer II	SPACER SURFACTANT, SS-267	1.0000	GPB
Lead Slurry	BJCem P100.3.01C	IntegraCare EC-2	3.0000	BWOB
Lead Slurry	BJCem P100.3.01C	FOAM PREVENTER, FP-24	0.3000	BWOB
Lead Slurry	BJCem P100.3.01C	CEMENT, ASTM TYPE III	100.0000	PCT
Lead Slurry	BJCem P100.3.01C	RETARDER, SR-20	0.7000	BWOB
Lead Slurry	BJCem P100.3.01C	IntegraGuard GW-86	0.1000	BWOB
Lead Slurry	BJCem P100.3.01C	FLUID LOSS, FL-66	0.5000	BWOB
Tail Slurry	BJCem P50.6.02C	CEMENT, FLY ASH (ROCKIES)	50.0000	PCT
Tail Slurry	BJCem P50.6.02C	EXTENDER, BENTONITE	2.0000	BWOB
Tail Slurry	BJCem P50.6.02C	CEMENT, CLASS G	50.0000	PCT
Tail Slurry	BJCem P50.6.02C	IntegraGuard GW-86	0.1000	BWOB
Tail Slurry	BJCem P50.6.02C	FLUID LOSS, FL-66	0.2000	BWOB
Tail Slurry	BJCem P50.6.02C	RETARDER, SR-20	0.1000	BWOB
Tail Slurry	BJCem P50.6.02C	FOAM PREVENTER, FP-24	0.3000	BWOB
Displacement 2	Retarded Water w/ Clay Protection & Biocide	BIOCIDE, BIOC11139W	0.0100	GPB
Displacement 2	Retarded Water w/ Clay Protection & Biocide	RETARDER, SR-61L	0.1000	GPB
Displacement 2	Retarded Water w/ Clay Protection & Biocide	ResCare CS-2	0.0800	GPB
Displacement Final	Water w/ Clay Protection & Biocide	ResCare CS-2	0.0800	GPB
Displacement Final	Water w/ Clay Protection & Biocide	BIOCIDE, BIOC11139W	0.0100	GPB

DISPLACEMENT AND END OF JOB SUMMARY

Displaced By	BJ	Amt of Cement Returned / Reversed	0.00
Calculated Displacement Vol (bbls)	354.00	Method Used to Verify Returns	Visual
Actual Displacement Vol (bbls)	354.00	Amt of Spacer to Surface	78.00
Did Float Hold?	Yes	Pressure Left on Casing (psi)	0.00
Bump Plug	Yes	Amt Bled Back After Job	3.50
Bump Plug Pressure (psi)	2,200.00	Total Volume Pumped (bbls)	1154.00
Were Returns Planned at Surface	Yes	Top Out Cement Spotted	No
Cement Returns During Job	Full	Lost Circulation During Cement Job	No

Comments

JOB SUMMARY

PRESSURE TEST OF 5,000 PSI
28 BBLS OF SPACER @12.0#
26 BBLS OF SPACER @11.5#
26 BBLS OF SPACER @11.0#
980 SK OF LEAD CEMENT @13.2 (317 BBLS SLURRY)
1540 SK OF TAIL CEMENT @13.5 (403 BBLS SLURRY)
DISPLACEMENT OF 354 BBLS.

Client: Bayswater Exploration & Production, LLC

Well: COT WEST #N-30-25HC

Well API: 05-123-50503

Start Date: 4/13/2020

End Date: 4/14/2020

Field Ticket #: FT-25713-Z1M7H00201-2014813252



BJ Cementing Event Log

Long String - Cheyenne, WY

SEQ	START DATE / TIME	EVENT	DENSITY (ppg)	PUMP RATE (bpm)	PUMP VOL (bbls)	PIPE PRESSURE (psi)	COMMENTS
1	04/13/2020 16:00	Callout					Crew got called out to be at the yard @5:45pm
2	04/13/2020 19:30	Arrive on Location					Arrived on location @21:00
3	04/13/2020 21:00	Rig Up					Got with the crew to spot equipment and rigging up head so rig can circulate for 4 hrs.
4	04/14/2020 00:30	STEACS Briefing					Safety meeting with crew and company man.
5	04/14/2020 00:45	Other (See comment)					Pumping 3 bbls of H2O to get air out of line to pressure test lines.
6	04/14/2020 01:13	Pressure Test	8.3000	0.25	0.00	5000.00	Pressure lines to 5000 psi
7	04/14/2020 01:18	Pressure Test	8.3300	0.00	0.00	0.00	Pressure test was good opening up bottom valve on head.
8	04/14/2020 01:19	Pump Spacer	12.0000	3.00	28.00	650.00	Pumping spacer @12.0# total of 28 bbls out of CTF-006 FRONT POT
9	04/14/2020 01:32	Pump Spacer	11.5000	3.00	26.00	630.00	Pumping spacer @11.5# total of 26 bbls out of CTF-006 FRONT POT
10	04/14/2020 01:45	Pump Spacer	11.0000	3.00	26.00	570.00	Pumping spacer @11.0# total of 26 bbls out of CTF-006 FRONT POT
11	04/14/2020 01:54	Pump Lead Cement	13.2000	6.00	32.00	840.00	Pumping Lead Cement @13.2# 32 bbls out of CTF-006 REAR POT
12	04/14/2020 01:59	Pump Lead Cement	13.2000	6.00	103.00	810.00	Pumping Lead Cement @13.2# 71 bbls out of CTF-453 POT #4
13	04/14/2020 02:11	Pump Lead Cement	13.2000	6.00	174.00	490.00	Pumping Lead Cement @13.2# 71 bbls out of CTF-453 POT #3
14	04/14/2020 02:24	Pump Lead Cement	13.2000	6.00	245.00	470.00	Pumping Lead Cement @13.2# 71 bbls out of CTF-453 POT#2
15	04/14/2020 02:38	Pump Lead Cement	13.2000	6.00	317.00	470.00	Pumping Lead Cement @13.2# 71 bbls out of CTF-453 POT#1
16	04/14/2020 02:47	Pump Tail Cement	13.5000	6.00	74.00	465.00	Pumping Tail Cement @13.5# 74 bbls out of CTF-012 POT#4
17	04/14/2020 02:55	Pump Tail Cement	13.5000	6.00	149.00	460.00	Pumping Tail Cement @13.5# 74 bbls out of CTF-012 POT#3
18	04/14/2020 03:05	Pump Tail Cement	13.5000	6.00	222.00	460.00	Pumping Tail Cement @13.5# 74 bbls out of CTF-012 POT#2
19	04/14/2020 03:23	Pump Tail Cement	13.5000	6.00	297.00	455.00	Pumping Tail Cement @13.5# 75 bbls out of CTF-012 POT#1
20	04/14/2020 03:35	Pump Tail Cement	13.5000	6.00	349.00	450.00	Pumping Tail Cement @13.5# 52 bbls out of CTF-193 POT#2

Client: Bayswater Exploration & Production, LLC

Well Name / API: COT WEST #N-30-25HC / 05-123-50503

Well 15996
MD:



Quote #: QUO-44559-Y8C0S5

Plan #: ORD-25713-Z1M7H0

Execution #: EXC-25713-Z1M7H002

21	04/14/2020 03:40	Pump Tail Cement	13.5000	6.00	403.00	450.00	Pumping Tail Cement @13.5@ 53 bbls out of CTF-193 POT#1
22	04/14/2020 03:49	Drop Top Plug	8.3000	6.00	403.00	0.00	End of Tail Cement shut down to drop plug.
23	04/14/2020 03:56	Wash Pumps and Lines	8.3000	5.00	0.00	0.00	Dropping plug and we are washing pumps and pumping lines.
24	04/14/2020 04:05	Wash Pumps and Lines	8.3000	0.00	0.00	0.00	Done washing to the pit, swapping valves to start displacement of 354 bbls.
25	04/14/2020 04:05	Wash Pumps and Lines	8.3000	0.00	0.00	0.00	Plug left the head and started displacement.
26	04/14/2020 04:06	Pump Displacement	8.3000	8.00	50.00	810.00	50 bbls gone 8bpm @810psi
27	04/14/2020 04:11	Pump Displacement	8.3000	8.00	100.00	1180.00	100 bbls gone 8bpm @1180psi
28	04/14/2020 04:18	Pump Displacement	8.3300	8.00	150.00	2150.00	150 bbls gone 8bpm @2150psi
29	04/14/2020 04:25	Pump Displacement	8.3300	8.00	200.00	2380.00	200 bbls gone 8bpm @2380psi
30	04/14/2020 04:30	Pump Displacement	8.3300	8.00	250.00	2650.00	250 bbls gone 8bpm @2650psi
31	04/14/2020 04:38	Pump Displacement	8.3300	8.00	260.00	2700.00	260 bbls gone and getting Diesel to surface
32	04/14/2020 04:39	Pump Displacement	8.3300	0.00	276.00	0.00	276 bbls gone and got spacer to surface. Shut down to change valves to pump to the pits.
33	04/14/2020 04:41	Pump Displacement	8.3300	8.00	276.00	2850.00	276 bbls gone and started pumping again.
34	04/14/2020 04:41	Pump Displacement	8.3300	8.00	300.00	2890.00	300 bbls gone 8bpm @2890 psi
35	04/14/2020 04:46	Pump Displacement	8.3300	8.00	320.00	2920.00	320 bbls gone 8bpm @2920 psi
36	04/14/2020 04:48	Pump Displacement	8.3300	3.00	335.00	2050.00	335 bbls gone and slowing down to 3bpm @2050
37	04/14/2020 04:50	Pump Displacement	8.3300	3.00	340.00	2150.00	340 bbls gone 3bpm @2150psi
38	04/14/2020 04:52	Land Plug	8.3330	0.00	349.00	2200.00	349 bbls gone and landed the plug 2,200psi / 3000psi.
39	04/14/2020 04:58	Check Floats	8.3300	0.00	349.00	0.00	Release Pressure and float are holding and got 3.5 bbls back to the truck.
40	04/14/2020 05:00	Pump Displacement	8.3300	0.00	349.00	0.00	ONLY GOT 78 BBLS OF SPACER BACK TO SURFACE NO CEMENT.
41	04/14/2020 05:00	Filling Out Ticket					Filling out paperwork and Rigging down.
42	04/14/2020 06:30	Leave Location					Rigged down and leaving location.

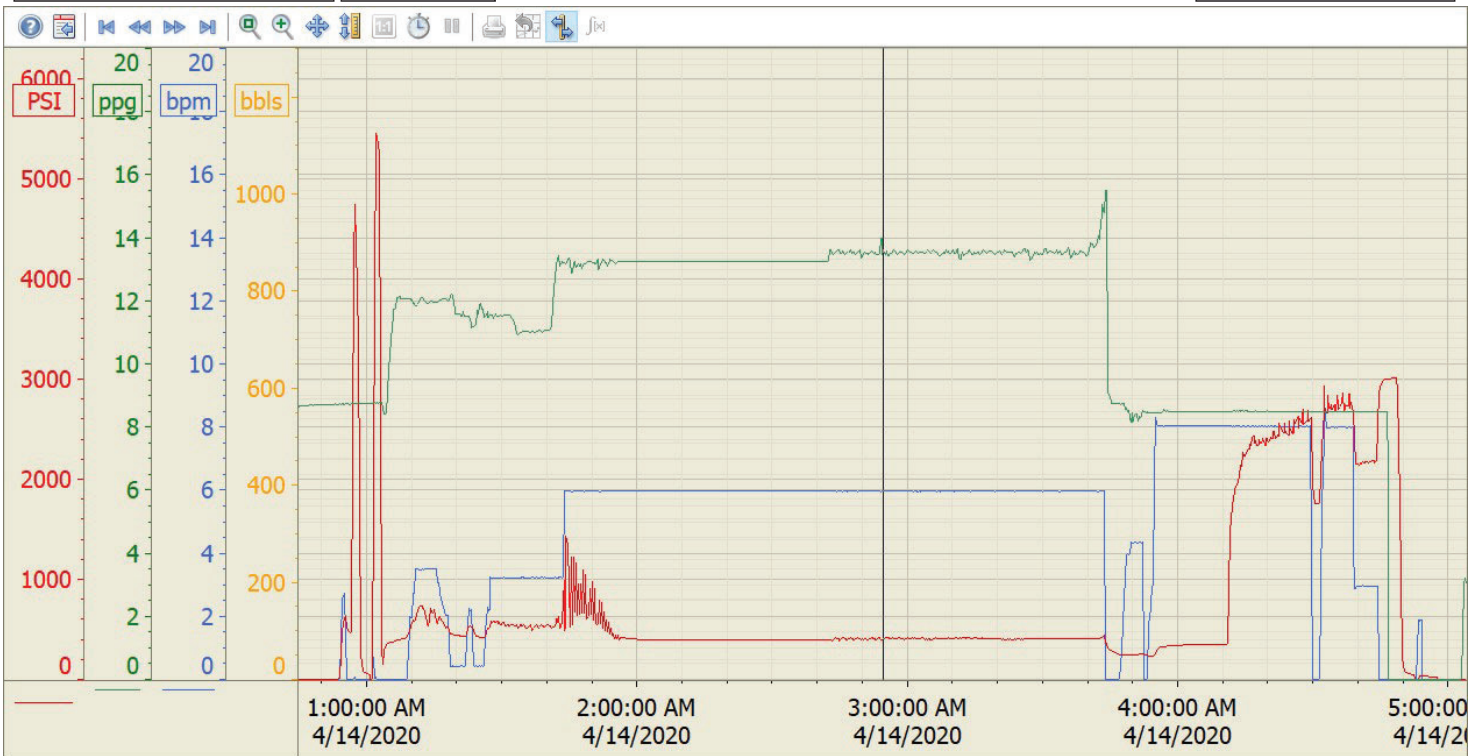
Summary Trend

Bayswater Exploration

N-30-25HC



Lease: COT WEST



4/14/2020 5:33:00 AM