

Bayswater Exploration & Production, LLC

Well Name: **COT EAST X-30-29HN**

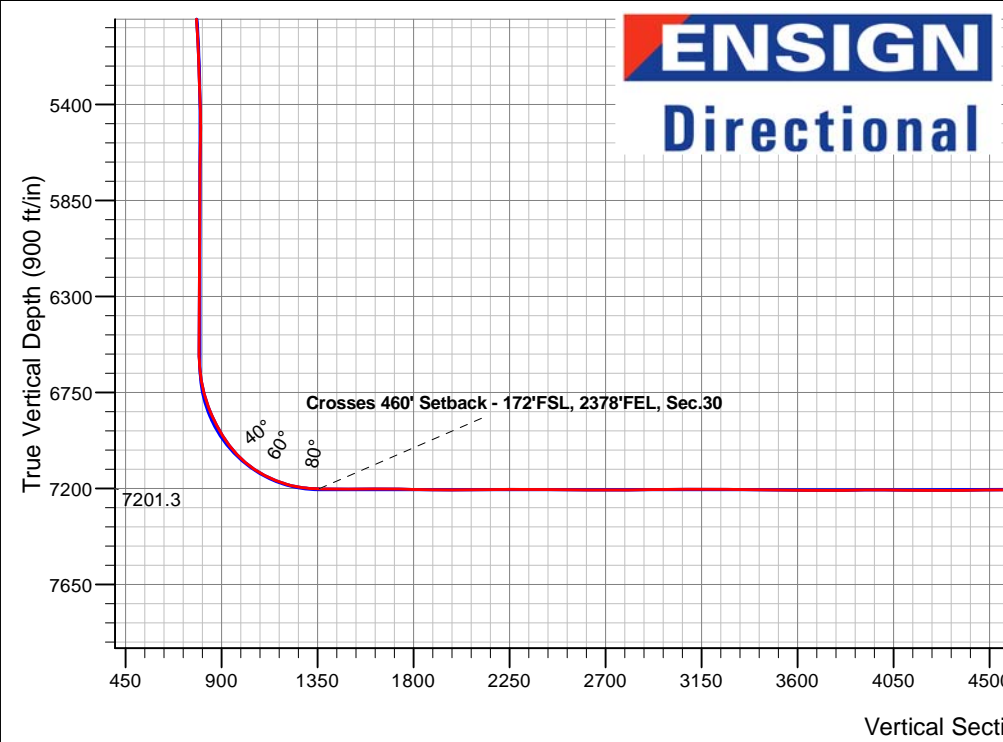
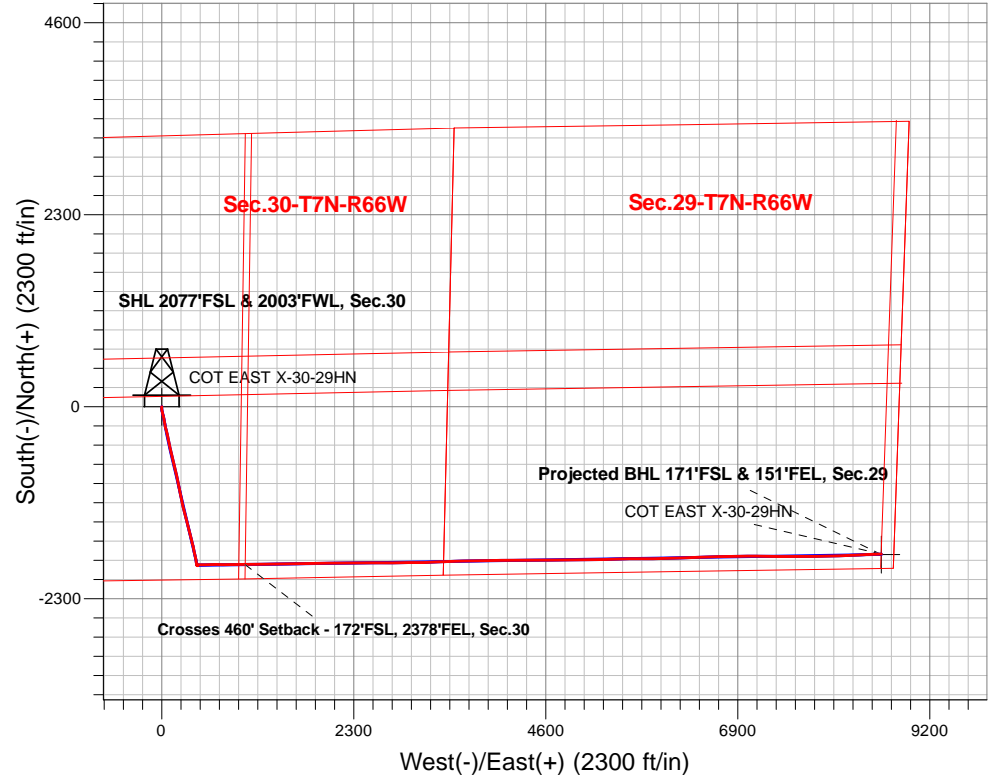
Surface Location: COT 30J Pad Sec.30-T7N-R66W
 North American Datum 1983 , US State Plane 1983, Colorado Northern Zone
 Ground Elevation: 4946.0

+N/-S	+E/-W	Northing	Easting	Latitude	Longitude	Slot
0.0	0.0	1441643.70	3187646.57	40.543751	-104.824811	

Original Well Elev WELL @ 4971.0ft (Original Well Elev)

FINAL SURVEY

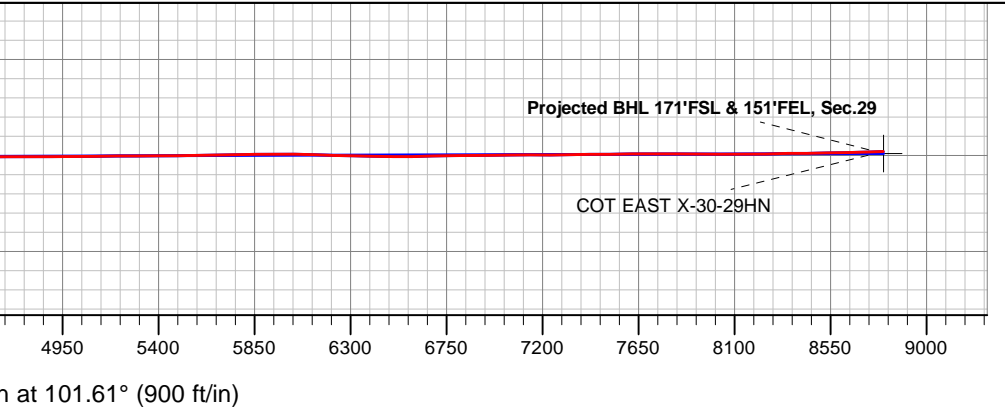
Projected Bottom Hole Location
15,576'MD 7181'TVD 1765'S & 8617'E of SHL
92.33 degree Incl @ 87.89 degree AZM



COT 30J Pad Sec.30-T7N-R66W
 COT EAST X-30-29HN
 COT EAST X-30-29HN Wellbore #1
 12:42, January 22 2020

ANNOTATIONS		
TVD	MD	Annotation
7201.3	7953.7	Crosses 460' Setback - 172'FSL, 2378'FEL, Sec.30

LEGEND	
	COT EAST X-30-29HN, COT EAST X-30-29HN Wellbore #1, Plan #2 (1-17-20) V0
	COT EAST X-30-29HN Wellbore #1
	Survey #1



Vertical Section at 101.61° (900 ft/in)



Bayswater Exploration & Production, LLC

SEC.30-T7N-R66W

COT 30J Pad Sec.30-T7N-R66W

COT EAST X-30-29HN

COT EAST X-30-29HN Wellbore #1

Survey: Survey #1

Standard Survey Report

22 January, 2020



Company:	Bayswater Exploration & Production, LLC	Local Co-ordinate Reference:	Well COT EAST X-30-29HN
Project:	SEC.30-T7N-R66W	TVD Reference:	WELL @ 4971.0ft (Original Well Elev)
Site:	COT 30J Pad Sec.30-T7N-R66W	MD Reference:	WELL @ 4971.0ft (Original Well Elev)
Well:	COT EAST X-30-29HN	North Reference:	True
Wellbore:	COT EAST X-30-29HN Wellbore #1	Survey Calculation Method:	Minimum Curvature
Design:	COT EAST X-30-29HN Wellbore #1	Database:	US_EDM

Project	SEC.30-T7N-R66W, Weld County, CO		
Map System:	US State Plane 1983	System Datum:	Mean Sea Level
Geo Datum:	North American Datum 1983		Using Well Reference Point
Map Zone:	Colorado Northern Zone		Using geodetic scale factor

Site	COT 30J Pad Sec.30-T7N-R66W				
Site Position:		Northing:	1,441,808.15 usft	Latitude:	40.544203
From:	Lat/Long	Easting:	3,187,616.69 usft	Longitude:	-104.824914
Position Uncertainty:	0.0 ft	Slot Radius:	13-3/16 "	Grid Convergence:	0.44 °

Well	COT EAST X-30-29HN					
Well Position	+N/-S	0.0 ft	Northing:	1,441,643.70 usft	Latitude:	40.543751
	+E/-W	0.0 ft	Easting:	3,187,646.57 usft	Longitude:	-104.824811
Position Uncertainty		0.0 ft	Wellhead Elevation:	0.0 ft	Ground Level:	4,946.0 ft

Wellbore	COT EAST X-30-29HN Wellbore #1				
Magnetics	Model Name	Sample Date	Declination (°)	Dip Angle (°)	Field Strength (nT)
	HDGM	1/17/2020	7.92	66.88	52,238

Design	COT EAST X-30-29HN Wellbore #1				
Audit Notes:					
Version:	1.0	Phase:	ACTUAL	Tie On Depth:	0.0
Vertical Section:	Depth From (TVD) (ft)	+N/-S (ft)	+E/-W (ft)	Direction (°)	
	0.0	0.0	0.0	101.61	

Survey Program	Date	1/22/2020			
From (ft)	To (ft)	Survey (Wellbore)	Tool Name	Description	
214.0	15,576.0	Survey #1 (COT EAST X-30-29HN Wellbo	MWD	MWD - Standard	

Survey										
Measured Depth (ft)	Inclination (°)	Azimuth (°)	Vertical Depth (ft)	+N/-S (ft)	+E/-W (ft)	Vertical Section (ft)	Dogleg Rate (°/100usft)	Build Rate (°/100usft)	Turn Rate (°/100usft)	
0.0	0.00	0.00	0.0	0.0	0.0	0.0	0.00	0.00	0.00	
214.0	0.80	195.30	214.0	-1.4	-0.4	-0.1	0.37	0.37	0.00	
308.0	1.60	190.90	308.0	-3.4	-0.8	-0.1	0.86	0.85	-4.68	
403.0	2.80	186.20	402.9	-7.0	-1.3	0.1	1.28	1.26	-4.95	
496.0	4.20	177.20	495.7	-12.6	-1.4	1.2	1.61	1.51	-9.68	
591.0	6.20	175.80	590.3	-21.2	-0.9	3.4	2.11	2.11	-1.47	
685.0	8.60	172.50	683.5	-33.3	0.4	7.1	2.59	2.55	-3.51	
780.0	11.10	168.80	777.1	-49.3	3.1	13.0	2.71	2.63	-3.89	
874.0	13.80	167.20	868.9	-69.1	7.4	21.1	2.90	2.87	-1.70	
968.0	14.90	167.00	960.0	-91.8	12.6	30.8	1.17	1.17	-0.21	

Company:	Bayswater Exploration & Production, LLC	Local Co-ordinate Reference:	Well COT EAST X-30-29HN
Project:	SEC.30-T7N-R66W	TVD Reference:	WELL @ 4971.0ft (Original Well Elev)
Site:	COT 30J Pad Sec.30-T7N-R66W	MD Reference:	WELL @ 4971.0ft (Original Well Elev)
Well:	COT EAST X-30-29HN	North Reference:	True
Wellbore:	COT EAST X-30-29HN Wellbore #1	Survey Calculation Method:	Minimum Curvature
Design:	COT EAST X-30-29HN Wellbore #1	Database:	US_EDM

Survey										
Measured Depth (ft)	Inclination (°)	Azimuth (°)	Vertical Depth (ft)	+N/-S (ft)	+E/-W (ft)	Vertical Section (ft)	Dogleg Rate (°/100usft)	Build Rate (°/100usft)	Turn Rate (°/100usft)	
1,062.0	15.60	168.40	1,050.7	-115.9	17.8	40.8	0.84	0.74	1.49	
1,157.0	16.80	168.60	1,141.9	-141.9	23.1	51.2	1.26	1.26	0.21	
1,251.0	16.40	167.20	1,232.0	-168.2	28.8	62.0	0.60	-0.43	-1.49	
1,345.0	16.10	170.20	1,322.2	-194.0	33.9	72.3	0.95	-0.32	3.19	
1,439.0	16.80	170.40	1,412.4	-220.2	38.4	81.9	0.75	0.74	0.21	
1,507.0	17.30	169.50	1,477.4	-239.8	41.9	89.3	0.83	0.74	-1.32	
1,662.0	16.71	162.60	1,625.6	-283.8	52.7	108.8	1.36	-0.38	-4.45	
1,757.0	18.38	164.88	1,716.2	-311.3	60.7	122.1	1.90	1.76	2.40	
1,852.0	20.75	168.22	1,805.7	-342.2	68.1	135.5	2.76	2.49	3.52	
1,946.0	23.83	168.57	1,892.7	-377.1	75.2	149.6	3.28	3.28	0.37	
2,041.0	25.76	167.52	1,978.9	-416.1	83.5	165.5	2.08	2.03	-1.11	
2,135.0	27.96	167.52	2,062.8	-457.6	92.7	182.9	2.34	2.34	0.00	
2,230.0	29.81	168.05	2,146.0	-502.4	102.4	201.4	1.97	1.95	0.56	
2,324.0	29.81	167.87	2,227.5	-548.1	112.1	220.1	0.10	0.00	-0.19	
2,419.0	29.90	167.87	2,309.9	-594.3	122.1	239.2	0.09	0.09	0.00	
2,514.0	29.72	167.17	2,392.3	-640.4	132.3	258.4	0.41	-0.19	-0.74	
2,608.0	29.19	166.46	2,474.2	-685.5	142.8	277.8	0.68	-0.56	-0.76	
2,703.0	28.75	166.11	2,557.3	-730.2	153.7	297.5	0.50	-0.46	-0.37	
2,797.0	29.99	164.36	2,639.2	-774.7	165.5	318.0	1.60	1.32	-1.86	
2,891.0	29.63	166.11	2,720.8	-819.9	177.4	338.8	1.00	-0.38	1.86	
2,986.0	30.43	169.28	2,803.0	-866.3	187.5	358.0	1.87	0.84	3.34	
3,081.0	30.60	169.28	2,884.9	-913.7	196.5	376.3	0.18	0.18	0.00	
3,175.0	30.25	168.93	2,965.9	-960.5	205.5	394.6	0.42	-0.37	-0.37	
3,269.0	29.46	168.75	3,047.5	-1,006.4	214.5	412.7	0.85	-0.84	-0.19	
3,386.0	28.67	168.40	3,149.7	-1,062.1	225.8	434.9	0.69	-0.68	-0.30	
3,479.0	28.49	168.22	3,231.4	-1,105.7	234.8	452.5	0.21	-0.19	-0.19	
3,574.0	27.26	168.05	3,315.4	-1,149.1	243.9	470.2	1.30	-1.29	-0.18	
3,669.0	27.35	166.11	3,399.8	-1,191.6	253.7	488.3	0.94	0.09	-2.04	
3,763.0	28.84	167.17	3,482.7	-1,234.7	263.9	507.0	1.67	1.59	1.13	
3,857.0	30.78	165.76	3,564.3	-1,280.1	274.9	526.8	2.19	2.06	-1.50	
3,952.0	29.11	164.53	3,646.6	-1,325.9	287.0	547.9	1.87	-1.76	-1.29	
4,047.0	30.60	165.76	3,729.0	-1,371.7	299.1	569.0	1.70	1.57	1.29	
4,142.0	29.37	164.36	3,811.3	-1,417.5	311.3	590.2	1.49	-1.29	-1.47	
4,236.0	31.04	166.46	3,892.5	-1,463.3	323.2	611.1	2.10	1.78	2.23	
4,331.0	31.39	165.94	3,973.7	-1,511.1	335.0	632.2	0.46	0.37	-0.55	
4,425.0	28.40	167.34	4,055.2	-1,556.7	345.8	652.0	3.27	-3.18	1.49	
4,520.0	26.82	166.11	4,139.4	-1,599.5	355.9	670.5	1.77	-1.66	-1.29	
4,615.0	24.80	165.76	4,224.9	-1,639.6	366.0	688.4	2.13	-2.13	-0.37	
4,709.0	22.34	166.99	4,311.1	-1,676.2	374.8	704.5	2.67	-2.62	1.31	
4,803.0	21.37	167.17	4,398.3	-1,710.3	382.7	719.0	1.03	-1.03	0.19	
4,898.0	20.31	168.22	4,487.1	-1,743.3	389.9	732.7	1.18	-1.12	1.11	
4,993.0	18.29	168.05	4,576.8	-1,774.0	396.3	745.2	2.13	-2.13	-0.18	
5,088.0	16.00	166.99	4,667.5	-1,801.4	402.4	756.6	2.43	-2.41	-1.12	
5,182.0	13.45	170.16	4,758.4	-1,824.8	407.1	766.0	2.84	-2.71	3.37	

Company:	Bayswater Exploration & Production, LLC	Local Co-ordinate Reference:	Well COT EAST X-30-29HN
Project:	SEC.30-T7N-R66W	TVD Reference:	WELL @ 4971.0ft (Original Well Elev)
Site:	COT 30J Pad Sec.30-T7N-R66W	MD Reference:	WELL @ 4971.0ft (Original Well Elev)
Well:	COT EAST X-30-29HN	North Reference:	True
Wellbore:	COT EAST X-30-29HN Wellbore #1	Survey Calculation Method:	Minimum Curvature
Design:	COT EAST X-30-29HN Wellbore #1	Database:	US_EDM

Survey										
Measured Depth (ft)	Inclination (°)	Azimuth (°)	Vertical Depth (ft)	+N/-S (ft)	+E/-W (ft)	Vertical Section (ft)	Dogleg Rate (°/100usft)	Build Rate (°/100usft)	Turn Rate (°/100usft)	
5,276.0	10.90	172.27	4,850.3	-1,844.3	410.2	773.0	2.75	-2.71	2.24	
5,371.0	9.94	168.75	4,943.7	-1,861.3	413.0	779.1	1.21	-1.01	-3.71	
5,466.0	8.27	167.70	5,037.5	-1,876.0	416.1	785.1	1.77	-1.76	-1.11	
5,561.0	6.07	167.87	5,131.8	-1,887.6	418.6	789.9	2.32	-2.32	0.18	
5,656.0	4.22	159.61	5,226.4	-1,895.8	420.9	793.7	2.09	-1.95	-8.69	
5,750.0	2.11	151.00	5,320.3	-1,900.5	422.9	796.7	2.29	-2.24	-9.16	
5,845.0	2.46	99.84	5,415.2	-1,902.4	425.8	799.9	2.10	0.37	-53.85	
5,940.0	0.70	310.43	5,510.2	-1,902.4	427.3	801.4	3.25	-1.85	-157.27	
6,034.0	0.70	320.80	5,604.2	-1,901.6	426.5	800.5	0.13	0.00	11.03	
6,129.0	0.62	319.39	5,699.2	-1,900.7	425.8	799.6	0.09	-0.08	-1.48	
6,224.0	1.14	301.82	5,794.1	-1,899.8	424.7	798.3	0.61	0.55	-18.49	
6,319.0	0.35	229.75	5,889.1	-1,899.5	423.7	797.2	1.14	-0.83	-75.86	
6,413.0	0.18	257.17	5,983.1	-1,899.7	423.3	796.9	0.22	-0.18	29.17	
6,507.0	0.18	246.80	6,077.1	-1,899.8	423.0	796.7	0.03	0.00	-11.03	
6,602.0	0.35	343.48	6,172.1	-1,899.6	422.8	796.4	0.43	0.18	101.77	
6,696.0	0.44	351.56	6,266.1	-1,899.0	422.7	796.2	0.11	0.10	8.60	
6,791.0	0.62	338.38	6,361.1	-1,898.1	422.4	795.7	0.23	0.19	-13.87	
6,885.0	0.79	336.45	6,455.1	-1,897.1	422.0	795.1	0.18	0.18	-2.05	
6,980.0	0.70	350.33	6,550.1	-1,895.9	421.6	794.5	0.21	-0.09	14.61	
7,075.0	5.45	84.73	6,645.0	-1,894.9	426.0	798.6	5.84	5.00	99.37	
7,169.0	13.89	88.77	6,737.6	-1,894.3	441.8	813.9	9.00	8.98	4.30	
7,264.0	21.28	91.58	6,828.1	-1,894.5	470.4	842.0	7.83	7.78	2.96	
7,359.0	29.72	86.13	6,913.7	-1,893.4	511.3	881.8	9.21	8.88	-5.74	
7,453.0	37.46	86.31	6,992.0	-1,890.0	563.1	931.9	8.23	8.23	0.19	
7,548.0	46.25	90.53	7,062.7	-1,888.4	626.4	993.6	9.71	9.25	4.44	
7,642.0	59.88	92.46	7,119.0	-1,890.5	701.3	1,067.4	14.59	14.50	2.05	
7,737.0	67.36	90.53	7,161.2	-1,892.7	786.3	1,151.1	8.08	7.87	-2.03	
7,831.0	78.09	89.30	7,189.1	-1,892.5	875.9	1,238.9	11.48	11.41	-1.31	
7,926.0	88.11	88.77	7,200.5	-1,890.9	970.1	1,330.8	10.56	10.55	-0.56	
7,953.7	88.39	88.62	7,201.3	-1,890.3	997.8	1,357.8	1.16	1.02	-0.56	
Crosses 460' Setback - 172'FSL, 2378'FEL, Sec.30										
8,021.0	89.08	88.24	7,202.8	-1,888.4	1,065.1	1,423.3	1.16	1.02	-0.56	
8,115.0	89.96	89.12	7,203.6	-1,886.3	1,159.0	1,514.9	1.32	0.94	0.94	
8,209.0	90.75	89.65	7,203.0	-1,885.2	1,253.0	1,606.8	1.01	0.84	0.56	
8,304.0	89.69	90.70	7,202.7	-1,885.5	1,348.0	1,699.9	1.57	-1.12	1.11	
8,398.0	88.46	88.42	7,204.2	-1,884.8	1,442.0	1,791.8	2.76	-1.31	-2.43	
8,492.0	89.08	88.77	7,206.2	-1,882.5	1,535.9	1,883.3	0.76	0.66	0.37	
8,587.0	89.78	88.59	7,207.1	-1,880.3	1,630.9	1,975.9	0.76	0.74	-0.19	
8,681.0	90.66	88.59	7,206.8	-1,878.0	1,724.9	2,067.5	0.94	0.94	0.00	
8,776.0	91.45	88.42	7,205.0	-1,875.5	1,819.8	2,160.0	0.85	0.83	-0.18	
8,870.0	89.25	89.82	7,204.5	-1,874.1	1,913.8	2,251.8	2.77	-2.34	1.49	
8,965.0	89.60	89.82	7,205.4	-1,873.8	2,008.8	2,344.8	0.37	0.37	0.00	
9,059.0	90.48	89.82	7,205.3	-1,873.5	2,102.8	2,436.8	0.94	0.94	0.00	

Company:	Bayswater Exploration & Production, LLC	Local Co-ordinate Reference:	Well COT EAST X-30-29HN
Project:	SEC.30-T7N-R66W	TVD Reference:	WELL @ 4971.0ft (Original Well Elev)
Site:	COT 30J Pad Sec.30-T7N-R66W	MD Reference:	WELL @ 4971.0ft (Original Well Elev)
Well:	COT EAST X-30-29HN	North Reference:	True
Wellbore:	COT EAST X-30-29HN Wellbore #1	Survey Calculation Method:	Minimum Curvature
Design:	COT EAST X-30-29HN Wellbore #1	Database:	US_EDM

Survey									
Measured Depth (ft)	Inclination (°)	Azimuth (°)	Vertical Depth (ft)	+N/-S (ft)	+E/-W (ft)	Vertical Section (ft)	Dogleg Rate (°/100usft)	Build Rate (°/100usft)	Turn Rate (°/100usft)
9,154.0	88.90	90.00	7,205.9	-1,873.3	2,197.8	2,529.8	1.67	-1.66	0.19
9,248.0	89.43	89.82	7,207.2	-1,873.2	2,291.8	2,621.9	0.60	0.56	-0.19
9,343.0	89.87	89.65	7,207.8	-1,872.8	2,386.8	2,714.8	0.50	0.46	-0.18
9,437.0	90.66	89.65	7,207.4	-1,872.2	2,480.8	2,806.8	0.84	0.84	0.00
9,532.0	91.28	89.65	7,205.8	-1,871.6	2,575.8	2,899.7	0.65	0.65	0.00
9,627.0	90.04	89.30	7,204.7	-1,870.7	2,670.8	2,992.6	1.36	-1.31	-0.37
9,721.0	90.75	89.30	7,204.0	-1,869.6	2,764.7	3,084.4	0.76	0.76	0.00
9,815.0	89.16	88.95	7,204.1	-1,868.1	2,858.7	3,176.2	1.73	-1.69	-0.37
9,910.0	89.52	89.30	7,205.2	-1,866.7	2,953.7	3,268.9	0.53	0.38	0.37
10,004.0	90.31	89.47	7,205.3	-1,865.7	3,047.7	3,360.8	0.86	0.84	0.18
10,099.0	88.81	89.47	7,206.1	-1,864.8	3,142.7	3,453.7	1.58	-1.58	0.00
10,193.0	89.16	87.71	7,207.7	-1,862.5	3,236.7	3,545.2	1.91	0.37	-1.87
10,288.0	89.52	88.07	7,208.8	-1,859.0	3,331.6	3,637.5	0.54	0.38	0.38
10,383.0	89.87	88.24	7,209.3	-1,855.9	3,426.5	3,729.9	0.41	0.37	0.18
10,477.0	90.57	88.24	7,209.0	-1,853.1	3,520.5	3,821.4	0.74	0.74	0.00
10,572.0	91.01	88.24	7,207.7	-1,850.1	3,615.4	3,913.8	0.46	0.46	0.00
10,667.0	89.16	88.59	7,207.5	-1,847.5	3,710.4	4,006.3	1.98	-1.95	0.37
10,761.0	89.52	88.24	7,208.6	-1,844.9	3,804.4	4,097.8	0.53	0.38	-0.37
10,855.0	89.60	89.12	7,209.3	-1,842.7	3,898.3	4,189.4	0.94	0.09	0.94
10,950.0	90.22	89.30	7,209.5	-1,841.4	3,993.3	4,282.2	0.68	0.65	0.19
11,045.0	90.22	88.95	7,209.1	-1,840.0	4,088.3	4,374.9	0.37	0.00	-0.37
11,139.0	90.48	89.65	7,208.5	-1,838.8	4,182.3	4,466.8	0.79	0.28	0.74
11,234.0	90.75	89.30	7,207.5	-1,838.0	4,277.3	4,559.6	0.47	0.28	-0.37
11,328.0	91.45	89.12	7,205.7	-1,836.7	4,371.3	4,651.4	0.77	0.74	-0.19
11,423.0	89.16	89.82	7,205.2	-1,835.8	4,466.2	4,744.3	2.52	-2.41	0.74
11,517.0	89.69	90.35	7,206.1	-1,835.9	4,560.2	4,836.4	0.80	0.56	0.56
11,612.0	90.31	90.53	7,206.1	-1,836.7	4,655.2	4,929.6	0.68	0.65	0.19
11,707.0	91.19	90.18	7,204.9	-1,837.2	4,750.2	5,022.8	1.00	0.93	-0.37
11,801.0	90.04	89.65	7,203.9	-1,837.1	4,844.2	5,114.8	1.35	-1.22	-0.56
11,896.0	90.84	89.47	7,203.2	-1,836.4	4,939.2	5,207.7	0.86	0.84	-0.19
11,990.0	89.96	89.82	7,202.5	-1,835.8	5,033.2	5,299.7	1.01	-0.94	0.37
12,085.0	90.57	88.95	7,202.1	-1,834.8	5,128.2	5,392.5	1.12	0.64	-0.92
12,179.0	90.84	88.42	7,200.9	-1,832.6	5,222.2	5,484.1	0.63	0.29	-0.56
12,274.0	90.57	87.19	7,199.7	-1,829.0	5,317.1	5,576.4	1.33	-0.28	-1.29
12,369.0	90.84	86.84	7,198.6	-1,824.0	5,411.9	5,668.3	0.47	0.28	-0.37
12,463.0	90.84	89.12	7,197.2	-1,820.7	5,505.9	5,759.6	2.43	0.00	2.43
12,558.0	92.15	90.18	7,194.7	-1,820.1	5,600.8	5,852.5	1.77	1.38	1.12
12,652.0	89.34	90.00	7,193.5	-1,820.3	5,694.8	5,944.6	3.00	-2.99	-0.19
12,747.0	89.52	90.00	7,194.4	-1,820.3	5,789.8	6,037.7	0.19	0.19	0.00
12,841.0	87.93	88.95	7,196.5	-1,819.4	5,883.8	6,129.5	2.03	-1.69	-1.12
12,936.0	88.29	88.77	7,199.7	-1,817.5	5,978.7	6,222.2	0.42	0.38	-0.19
13,030.0	88.64	88.77	7,202.2	-1,815.5	6,072.7	6,313.8	0.37	0.37	0.00
13,125.0	89.34	88.24	7,203.9	-1,813.0	6,167.6	6,406.3	0.92	0.74	-0.56
13,219.0	89.08	88.24	7,205.1	-1,810.2	6,261.6	6,497.7	0.28	-0.28	0.00

Company:	Bayswater Exploration & Production, LLC	Local Co-ordinate Reference:	Well COT EAST X-30-29HN
Project:	SEC.30-T7N-R66W	TVD Reference:	WELL @ 4971.0ft (Original Well Elev)
Site:	COT 30J Pad Sec.30-T7N-R66W	MD Reference:	WELL @ 4971.0ft (Original Well Elev)
Well:	COT EAST X-30-29HN	North Reference:	True
Wellbore:	COT EAST X-30-29HN Wellbore #1	Survey Calculation Method:	Minimum Curvature
Design:	COT EAST X-30-29HN Wellbore #1	Database:	US_EDM

Measured Depth (ft)	Inclination (°)	Azimuth (°)	Vertical Depth (ft)	+N/-S (ft)	+E/-W (ft)	Vertical Section (ft)	Dogleg Rate (°/100usft)	Build Rate (°/100usft)	Turn Rate (°/100usft)
13,314.0	90.92	87.54	7,205.1	-1,806.7	6,356.5	6,590.0	2.07	1.94	-0.74
13,408.0	91.71	87.71	7,203.0	-1,802.8	6,450.4	6,681.2	0.86	0.84	0.18
13,503.0	90.31	88.42	7,201.3	-1,799.6	6,545.3	6,773.5	1.65	-1.47	0.75
13,598.0	91.28	88.59	7,200.0	-1,797.1	6,640.3	6,866.1	1.04	1.02	0.18
13,692.0	90.13	88.59	7,198.8	-1,794.8	6,734.2	6,957.6	1.22	-1.22	0.00
13,787.0	90.92	89.12	7,198.0	-1,792.9	6,829.2	7,050.3	1.00	0.83	0.56
13,881.0	89.52	89.65	7,197.6	-1,791.9	6,923.2	7,142.1	1.59	-1.49	0.56
13,976.0	90.22	89.30	7,197.8	-1,791.0	7,018.2	7,235.0	0.82	0.74	-0.37
14,070.0	91.45	90.18	7,196.5	-1,790.6	7,112.2	7,327.0	1.61	1.31	0.94
14,166.0	90.22	90.70	7,195.1	-1,791.3	7,208.2	7,421.2	1.39	-1.28	0.54
14,261.0	90.66	90.53	7,194.3	-1,792.3	7,303.2	7,514.4	0.50	0.46	-0.18
14,355.0	91.45	90.70	7,192.6	-1,793.3	7,397.1	7,606.7	0.86	0.84	0.18
14,450.0	89.25	90.70	7,192.0	-1,794.5	7,492.1	7,700.0	2.32	-2.32	0.00
14,545.0	89.87	90.70	7,192.7	-1,795.7	7,587.1	7,793.2	0.65	0.65	0.00
14,640.0	89.34	88.77	7,193.4	-1,795.2	7,682.1	7,886.2	2.11	-0.56	-2.03
14,734.0	89.43	88.77	7,194.4	-1,793.2	7,776.1	7,977.8	0.10	0.10	0.00
14,829.0	90.13	88.59	7,194.8	-1,791.0	7,871.0	8,070.4	0.76	0.74	-0.19
14,924.0	90.92	89.12	7,193.9	-1,789.1	7,966.0	8,163.1	1.00	0.83	0.56
15,018.0	91.54	88.95	7,191.9	-1,787.5	8,060.0	8,254.8	0.68	0.66	-0.18
15,113.0	90.04	87.71	7,190.6	-1,784.8	8,154.9	8,347.3	2.05	-1.58	-1.31
15,208.0	90.48	87.19	7,190.1	-1,780.5	8,249.8	8,439.4	0.72	0.46	-0.55
15,302.0	91.36	87.19	7,188.6	-1,775.9	8,343.7	8,530.4	0.94	0.94	0.00
15,397.0	90.84	87.89	7,186.8	-1,771.8	8,438.6	8,622.5	0.92	-0.55	0.74
15,516.0	92.33	87.89	7,183.5	-1,767.5	8,557.5	8,738.1	1.25	1.25	0.00
15,576.0	92.33	87.89	7,181.1	-1,765.3	8,617.4	8,796.3	0.00	0.00	0.00

Target Name	Dip Angle (°)	Dip Dir. (°)	TVD (ft)	+N/-S (ft)	+E/-W (ft)	Northing (usft)	Easting (usft)	Latitude	Longitude
SHL 2077'FSL & 2003'F ¹ - hit/miss target - Shape - Point	0.00	0.00	1.0	0.0	0.0	1,441,643.71	3,187,646.57	40.543751	-104.824811
Projected BHL 171'FSL - survey misses target center by 11.3ft at 15576.0ft MD (7181.1 TVD, -1765.3 N, 8617.4 E) - Point	0.00	0.00	7,191.0	-1,770.5	8,618.6	1,439,938.89	3,196,278.16	40.538887	-104.793803

Measured Depth (ft)	Vertical Depth (ft)	Local Coordinates +N/-S (ft)	+E/-W (ft)	Comment
7,953.7	7,201.3	-1,890.3	997.8	Crosses 460' Setback - 172'FSL, 2378'FEL, Sec.30

Company:	Bayswater Exploration & Production, LLC	Local Co-ordinate Reference:	Well COT EAST X-30-29HN
Project:	SEC.30-T7N-R66W	TVD Reference:	WELL @ 4971.0ft (Original Well Elev)
Site:	COT 30J Pad Sec.30-T7N-R66W	MD Reference:	WELL @ 4971.0ft (Original Well Elev)
Well:	COT EAST X-30-29HN	North Reference:	True
Wellbore:	COT EAST X-30-29HN Wellbore #1	Survey Calculation Method:	Minimum Curvature
Design:	COT EAST X-30-29HN Wellbore #1	Database:	US_EDM

Checked By: _____ Approved By: _____ Date: _____