

Bayswater Exploration & Production, LLC

Well Name: **COT EAST V-30-29HN**

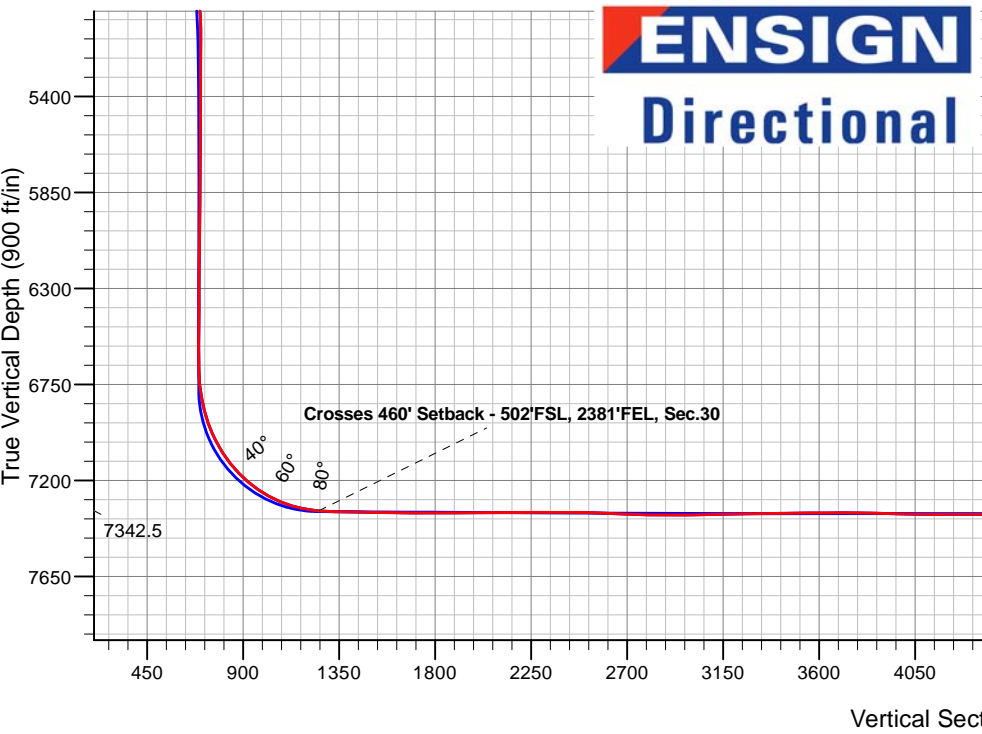
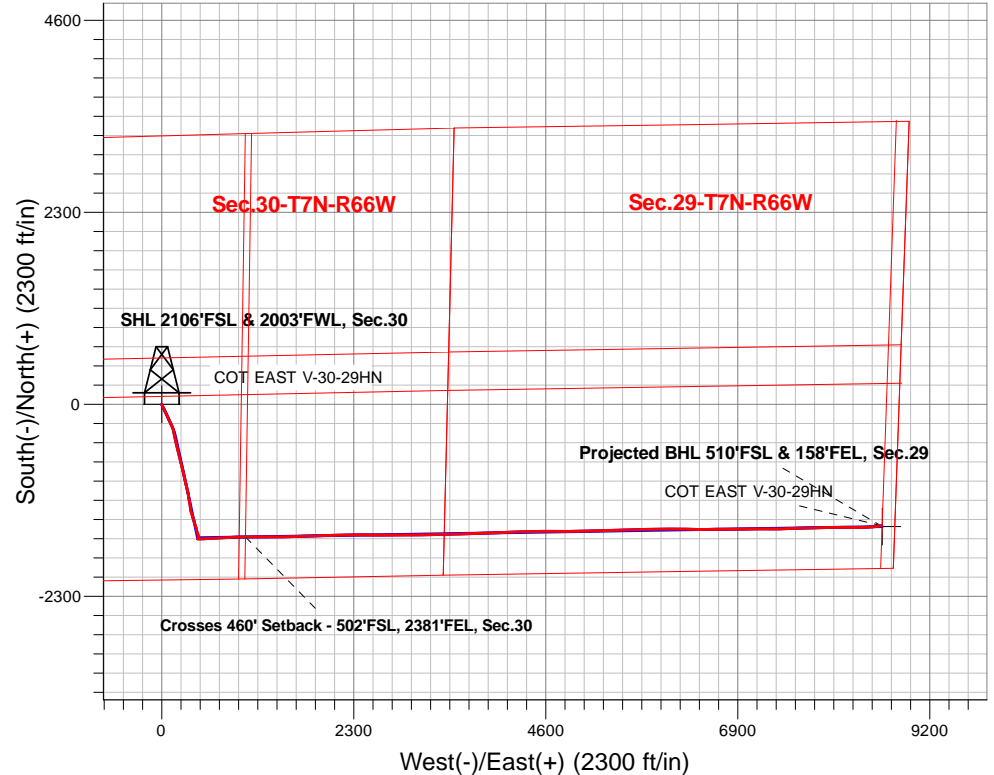
Surface Location: COT 30J Pad Sec.30-T7N-R66W
 North American Datum 1983 , US State Plane 1983, Colorado Northern Zone
 Ground Elevation: 4946.0

+N/-S	+E/-W	Northing	Easting	Latitude	Longitude	Slot
0.0	0.0	1441673.57	3187646.62	40.543833	-104.824810	

Original Well Elev WELL @ 4971.0ft (Original Well Elev)

FINAL SURVEY

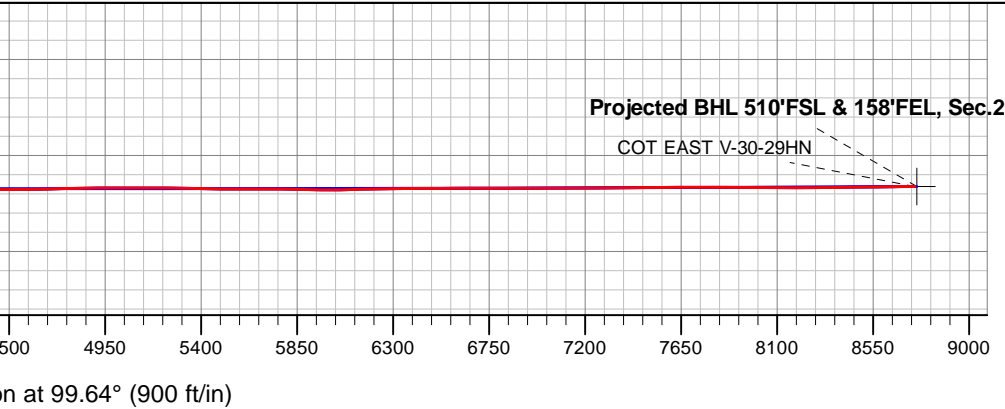
Projected Bottom Hole Location
15,583'MD 7345'TVD 1457'S & 8623'E of SHL
90.75 degree Incl @ 84.22 degree AZM



COT 30J Pad Sec.30-T7N-R66W
 COT EAST V-30-29HN
 COT EAST V-30-29HN Wellbore #1
 6:47, January 13 2020

ANNOTATIONS		
TVD	MD	Annotation
7342.5	7959.2	Crosses 460' Setback - 502'FSL, 2381'FEL, Sec.30

LEGEND	
	COT EAST V-30-29HN, COT EAST V-30-29HN Wellbore #1, Plan #2 (1-06-20) V0
	COT EAST V-30-29HN Wellbore #1
	Survey #1





Bayswater Exploration & Production, LLC

SEC.30-T7N-R66W

COT 30J Pad Sec.30-T7N-R66W

COT EAST V-30-29HN

COT EAST V-30-29HN Wellbore #1

Survey: Survey #1

Standard Survey Report

13 January, 2020



Company:	Bayswater Exploration & Production, LLC	Local Co-ordinate Reference:	Well COT EAST V-30-29HN
Project:	SEC.30-T7N-R66W	TVD Reference:	WELL @ 4971.0ft (Original Well Elev)
Site:	COT 30J Pad Sec.30-T7N-R66W	MD Reference:	WELL @ 4971.0ft (Original Well Elev)
Well:	COT EAST V-30-29HN	North Reference:	True
Wellbore:	COT EAST V-30-29HN Wellbore #1	Survey Calculation Method:	Minimum Curvature
Design:	COT EAST V-30-29HN Wellbore #1	Database:	US_EDM

Project	SEC.30-T7N-R66W, Weld County, CO		
Map System:	US State Plane 1983	System Datum:	Mean Sea Level
Geo Datum:	North American Datum 1983		Using Well Reference Point
Map Zone:	Colorado Northern Zone		Using geodetic scale factor

Site	COT 30J Pad Sec.30-T7N-R66W				
Site Position:		Northing:	1,441,808.15 usft	Latitude:	40.544203
From:	Lat/Long	Easting:	3,187,616.69 usft	Longitude:	-104.824914
Position Uncertainty:	0.0 ft	Slot Radius:	13-3/16 "	Grid Convergence:	0.44 °

Well	COT EAST V-30-29HN					
Well Position	+N/-S	0.0 ft	Northing:	1,441,673.57 usft	Latitude:	40.543833
	+E/-W	0.0 ft	Easting:	3,187,646.62 usft	Longitude:	-104.824810
Position Uncertainty		0.0 ft	Wellhead Elevation:	0.0 ft	Ground Level:	4,946.0 ft

Wellbore	COT EAST V-30-29HN Wellbore #1				
Magnetics	Model Name	Sample Date	Declination (°)	Dip Angle (°)	Field Strength (nT)
	HDGM	12/31/2019	7.92	66.88	52,243

Design	COT EAST V-30-29HN Wellbore #1				
Audit Notes:					
Version:	1.0	Phase:	ACTUAL	Tie On Depth:	0.0
Vertical Section:	Depth From (TVD) (ft)	+N/-S (ft)	+E/-W (ft)	Direction (°)	
	0.0	0.0	0.0	99.64	

Survey Program	Date	1/13/2020			
From (ft)	To (ft)	Survey (Wellbore)	Tool Name	Description	
216.0	15,583.0	Survey #1 (COT EAST V-30-29HN Wellbo	MWD	MWD - Standard	

Measured Depth (ft)	Inclination (°)	Azimuth (°)	Vertical Depth (ft)	+N/-S (ft)	+E/-W (ft)	Vertical Section (ft)	Dogleg Rate (°/100usft)	Build Rate (°/100usft)	Turn Rate (°/100usft)
0.0	0.00	0.00	0.0	0.0	0.0	0.0	0.00	0.00	0.00
216.0	1.00	149.60	216.0	-1.6	1.0	1.2	0.46	0.46	0.00
310.0	2.50	160.40	309.9	-4.3	2.1	2.7	1.63	1.60	11.49
405.0	3.70	159.30	404.8	-9.1	3.8	5.3	1.26	1.26	-1.16
499.0	4.70	160.70	498.5	-15.6	6.2	8.7	1.07	1.06	1.49
593.0	7.00	156.70	592.1	-24.5	9.7	13.7	2.48	2.45	-4.26
688.0	9.20	155.30	686.1	-36.7	15.2	21.1	2.32	2.32	-1.47
782.0	11.90	155.30	778.5	-52.3	22.4	30.8	2.87	2.87	0.00
877.0	15.00	152.10	870.9	-72.1	32.2	43.8	3.35	3.26	-3.37
972.0	16.90	153.70	962.2	-95.3	44.1	59.4	2.05	2.00	1.68

Company:	Bayswater Exploration & Production, LLC	Local Co-ordinate Reference:	Well COT EAST V-30-29HN
Project:	SEC.30-T7N-R66W	TVD Reference:	WELL @ 4971.0ft (Original Well Elev)
Site:	COT 30J Pad Sec.30-T7N-R66W	MD Reference:	WELL @ 4971.0ft (Original Well Elev)
Well:	COT EAST V-30-29HN	North Reference:	True
Wellbore:	COT EAST V-30-29HN Wellbore #1	Survey Calculation Method:	Minimum Curvature
Design:	COT EAST V-30-29HN Wellbore #1	Database:	US_EDM

Survey										
Measured Depth (ft)	Inclination (°)	Azimuth (°)	Vertical Depth (ft)	+N/-S (ft)	+E/-W (ft)	Vertical Section (ft)	Dogleg Rate (°/100usft)	Build Rate (°/100usft)	Turn Rate (°/100usft)	
1,067.0	15.80	154.20	1,053.4	-119.3	55.8	75.0	1.17	-1.16	0.53	
1,161.0	16.00	156.80	1,143.8	-142.8	66.5	89.5	0.79	0.21	2.77	
1,256.0	16.60	156.70	1,235.0	-167.3	77.0	104.0	0.63	0.63	-0.11	
1,350.0	16.20	154.60	1,325.1	-191.4	88.0	118.8	0.76	-0.43	-2.23	
1,445.0	17.30	154.70	1,416.1	-216.2	99.7	134.5	1.16	1.16	0.11	
1,526.0	17.20	154.00	1,493.5	-237.8	110.1	148.4	0.28	-0.12	-0.86	
1,662.0	16.44	157.70	1,623.7	-273.7	126.2	170.3	0.97	-0.56	2.72	
1,757.0	16.44	160.86	1,714.8	-298.9	135.7	183.8	0.94	0.00	3.33	
1,852.0	18.03	168.95	1,805.5	-326.0	142.9	195.5	3.02	1.67	8.52	
1,946.0	19.87	170.70	1,894.4	-356.0	148.3	205.8	2.05	1.96	1.86	
2,040.0	22.34	167.36	1,982.1	-389.2	154.8	217.8	2.92	2.63	-3.55	
2,135.0	24.09	168.07	2,069.4	-425.8	162.8	231.8	1.87	1.84	0.75	
2,230.0	24.71	166.13	2,155.9	-464.1	171.5	246.8	1.07	0.65	-2.04	
2,324.0	24.45	166.31	2,241.4	-502.1	180.9	262.4	0.29	-0.28	0.19	
2,419.0	24.18	166.48	2,328.0	-540.1	190.1	277.8	0.29	-0.28	0.18	
2,513.0	23.65	165.78	2,413.9	-577.1	199.2	293.0	0.64	-0.56	-0.74	
2,607.0	24.45	166.66	2,499.8	-614.3	208.3	308.2	0.93	0.85	0.94	
2,702.0	24.09	165.61	2,586.4	-652.2	217.7	323.8	0.59	-0.38	-1.11	
2,797.0	23.74	165.78	2,673.2	-689.5	227.2	339.4	0.38	-0.37	0.18	
2,891.0	24.53	167.89	2,759.0	-726.9	235.9	354.3	1.24	0.84	2.24	
2,986.0	24.27	167.01	2,845.5	-765.2	244.4	369.1	0.47	-0.27	-0.93	
3,080.0	23.74	166.48	2,931.4	-802.5	253.2	384.0	0.61	-0.56	-0.56	
3,174.0	24.09	167.36	3,017.3	-839.6	261.8	398.7	0.53	0.37	0.94	
3,269.0	23.39	166.48	3,104.3	-876.8	270.5	413.5	0.83	-0.74	-0.93	
3,386.0	24.89	167.89	3,211.0	-923.5	281.1	431.7	1.37	1.28	1.21	
3,481.0	23.92	166.13	3,297.5	-961.7	289.9	446.8	1.28	-1.02	-1.85	
3,576.0	24.62	168.42	3,384.1	-999.8	298.5	461.7	1.23	0.74	2.41	
3,670.0	22.51	166.84	3,470.3	-1,036.5	306.5	475.7	2.34	-2.24	-1.68	
3,765.0	23.04	167.72	3,557.9	-1,072.4	314.6	489.7	0.66	0.56	0.93	
3,860.0	24.09	169.82	3,645.0	-1,109.6	322.0	503.2	1.41	1.11	2.21	
3,954.0	25.59	171.41	3,730.3	-1,148.6	328.4	516.1	1.75	1.60	1.69	
4,049.0	24.36	170.35	3,816.4	-1,188.2	334.8	529.0	1.38	-1.29	-1.12	
4,143.0	27.61	172.99	3,900.9	-1,228.9	340.7	541.6	3.67	3.46	2.81	
4,238.0	28.93	167.72	3,984.6	-1,273.3	348.2	556.5	2.97	1.39	-5.55	
4,332.0	27.79	162.79	4,067.3	-1,316.4	359.6	574.9	2.77	-1.21	-5.24	
4,427.0	25.85	161.91	4,152.1	-1,357.3	372.5	594.5	2.08	-2.04	-0.93	
4,521.0	22.42	164.20	4,237.8	-1,394.0	383.8	611.8	3.78	-3.65	2.44	
4,616.0	20.84	163.50	4,326.1	-1,427.6	393.5	627.0	1.69	-1.66	-0.74	
4,711.0	18.82	161.56	4,415.5	-1,458.4	403.2	641.7	2.24	-2.13	-2.04	
4,805.0	17.06	166.31	4,504.9	-1,486.2	411.2	654.2	2.43	-1.87	5.05	
4,900.0	14.33	164.73	4,596.4	-1,511.0	417.6	664.7	2.91	-2.87	-1.66	
4,994.0	14.07	164.38	4,687.5	-1,533.3	423.8	674.5	0.29	-0.28	-0.37	
5,089.0	11.96	161.39	4,780.1	-1,553.7	430.0	684.1	2.33	-2.22	-3.15	
5,183.0	8.88	170.00	4,872.5	-1,570.1	434.4	691.1	3.66	-3.28	9.16	

Company:	Bayswater Exploration & Production, LLC	Local Co-ordinate Reference:	Well COT EAST V-30-29HN
Project:	SEC.30-T7N-R66W	TVD Reference:	WELL @ 4971.0ft (Original Well Elev)
Site:	COT 30J Pad Sec.30-T7N-R66W	MD Reference:	WELL @ 4971.0ft (Original Well Elev)
Well:	COT EAST V-30-29HN	North Reference:	True
Wellbore:	COT EAST V-30-29HN Wellbore #1	Survey Calculation Method:	Minimum Curvature
Design:	COT EAST V-30-29HN Wellbore #1	Database:	US_EDM

Survey										
Measured Depth (ft)	Inclination (°)	Azimuth (°)	Vertical Depth (ft)	+N/-S (ft)	+E/-W (ft)	Vertical Section (ft)	Dogleg Rate (°/100usft)	Build Rate (°/100usft)	Turn Rate (°/100usft)	
5,277.0	6.86	164.20	4,965.6	-1,582.7	437.2	696.0	2.31	-2.15	-6.17	
5,372.0	3.96	158.05	5,060.2	-1,591.2	440.0	700.1	3.11	-3.05	-6.47	
5,466.0	1.23	243.30	5,154.1	-1,594.6	440.3	701.0	4.31	-2.90	90.69	
5,561.0	1.32	196.89	5,249.1	-1,596.1	439.0	700.1	1.06	0.09	-48.85	
5,655.0	1.41	193.20	5,343.1	-1,598.3	438.5	699.9	0.13	0.10	-3.93	
5,750.0	1.14	195.14	5,438.0	-1,600.3	437.9	699.7	0.29	-0.28	2.04	
5,844.0	0.97	200.41	5,532.0	-1,602.0	437.4	699.5	0.21	-0.18	5.61	
5,939.0	1.14	207.27	5,627.0	-1,603.6	436.7	699.0	0.22	0.18	7.22	
6,033.0	1.14	200.59	5,721.0	-1,605.3	435.9	698.6	0.14	0.00	-7.11	
6,128.0	1.06	204.45	5,816.0	-1,607.0	435.3	698.2	0.11	-0.08	4.06	
6,222.0	0.97	252.62	5,910.0	-1,608.0	434.1	697.2	0.89	-0.10	51.24	
6,318.0	0.79	255.43	6,005.9	-1,608.4	432.7	695.9	0.19	-0.19	2.93	
6,412.0	0.79	247.87	6,099.9	-1,608.8	431.5	694.8	0.11	0.00	-8.04	
6,507.0	0.88	252.09	6,194.9	-1,609.3	430.2	693.6	0.11	0.09	4.44	
6,601.0	0.70	223.44	6,288.9	-1,609.9	429.1	692.6	0.46	-0.19	-30.48	
6,696.0	0.88	220.63	6,383.9	-1,610.9	428.2	691.9	0.19	0.19	-2.96	
6,790.0	0.44	198.65	6,477.9	-1,611.8	427.6	691.5	0.53	-0.47	-23.38	
6,885.0	0.53	190.39	6,572.9	-1,612.6	427.5	691.4	0.12	0.09	-8.69	
6,979.0	0.53	161.91	6,666.9	-1,613.4	427.5	691.6	0.28	0.00	-30.30	
7,074.0	6.77	89.84	6,761.7	-1,613.8	433.3	697.3	6.97	6.57	-75.86	
7,168.0	13.28	90.02	6,854.2	-1,613.8	449.6	713.4	6.93	6.93	0.19	
7,263.0	20.84	87.91	6,944.9	-1,613.2	477.4	740.8	7.98	7.96	-2.22	
7,358.0	29.72	88.26	7,030.8	-1,611.9	518.0	780.5	9.35	9.35	0.37	
7,453.0	37.81	84.39	7,109.7	-1,608.3	570.6	831.8	8.81	8.52	-4.07	
7,547.0	45.99	85.98	7,179.6	-1,603.1	633.1	892.5	8.77	8.70	1.69	
7,642.0	56.19	88.61	7,239.2	-1,599.7	706.8	964.7	10.95	10.74	2.77	
7,737.0	63.75	88.09	7,286.7	-1,597.3	789.0	1,045.3	7.97	7.96	-0.55	
7,832.0	74.83	87.91	7,320.2	-1,594.2	877.6	1,132.2	11.66	11.66	-0.19	
7,926.0	82.39	87.91	7,338.8	-1,590.9	969.6	1,222.3	8.04	8.04	0.00	
7,959.2	84.66	88.77	7,342.5	-1,589.9	1,002.6	1,254.7	7.32	6.85	2.61	
Crosses 460' Setback - 502'FSL, 2381'FEL, Sec.30										
8,021.0	88.90	90.37	7,346.0	-1,589.5	1,064.3	1,315.4	7.32	6.85	2.58	
8,115.0	88.81	89.49	7,347.9	-1,589.4	1,158.3	1,408.0	0.94	-0.10	-0.94	
8,210.0	88.55	89.84	7,350.1	-1,588.8	1,253.3	1,501.6	0.46	-0.27	0.37	
8,304.0	89.52	90.02	7,351.6	-1,588.7	1,347.2	1,594.2	1.05	1.03	0.19	
8,399.0	89.87	89.32	7,352.1	-1,588.1	1,442.2	1,687.8	0.82	0.37	-0.74	
8,493.0	90.04	88.44	7,352.2	-1,586.3	1,536.2	1,780.1	0.95	0.18	-0.94	
8,587.0	90.31	88.09	7,351.9	-1,583.5	1,630.2	1,872.3	0.47	0.29	-0.37	
8,682.0	90.57	87.91	7,351.2	-1,580.1	1,725.1	1,965.3	0.33	0.27	-0.19	
8,777.0	89.60	88.44	7,351.1	-1,577.1	1,820.1	2,058.4	1.16	-1.02	0.56	
8,872.0	90.13	88.09	7,351.3	-1,574.2	1,915.0	2,151.6	0.67	0.56	-0.37	
8,966.0	91.10	88.09	7,350.3	-1,571.1	2,009.0	2,243.6	1.03	1.03	0.00	
9,061.0	89.52	88.97	7,349.8	-1,568.7	2,103.9	2,336.9	1.90	-1.66	0.93	

Company:	Bayswater Exploration & Production, LLC	Local Co-ordinate Reference:	Well COT EAST V-30-29HN
Project:	SEC.30-T7N-R66W	TVD Reference:	WELL @ 4971.0ft (Original Well Elev)
Site:	COT 30J Pad Sec.30-T7N-R66W	MD Reference:	WELL @ 4971.0ft (Original Well Elev)
Well:	COT EAST V-30-29HN	North Reference:	True
Wellbore:	COT EAST V-30-29HN Wellbore #1	Survey Calculation Method:	Minimum Curvature
Design:	COT EAST V-30-29HN Wellbore #1	Database:	US_EDM

Survey									
Measured Depth (ft)	Inclination (°)	Azimuth (°)	Vertical Depth (ft)	+N/-S (ft)	+E/-W (ft)	Vertical Section (ft)	Dogleg Rate (°/100usft)	Build Rate (°/100usft)	Turn Rate (°/100usft)
9,155.0	90.04	88.61	7,350.1	-1,566.7	2,197.9	2,429.2	0.67	0.55	-0.38
9,250.0	88.11	89.67	7,351.7	-1,565.3	2,292.9	2,522.6	2.32	-2.03	1.12
9,344.0	88.02	89.84	7,354.8	-1,564.9	2,386.8	2,615.1	0.20	-0.10	0.18
9,439.0	87.49	89.67	7,358.6	-1,564.5	2,481.7	2,708.6	0.59	-0.56	-0.18
9,534.0	89.08	89.67	7,361.4	-1,563.9	2,576.7	2,802.2	1.67	1.67	0.00
9,628.0	90.57	90.37	7,361.7	-1,563.9	2,670.7	2,894.8	1.75	1.59	0.74
9,723.0	90.22	90.55	7,361.0	-1,564.7	2,765.7	2,988.6	0.41	-0.37	0.19
9,818.0	90.84	91.25	7,360.2	-1,566.2	2,860.7	3,082.5	0.98	0.65	0.74
9,912.0	90.75	89.67	7,358.8	-1,566.9	2,954.7	3,175.3	1.68	-0.10	-1.68
10,007.0	91.54	90.02	7,356.9	-1,566.7	3,049.6	3,268.9	0.91	0.83	0.37
10,102.0	91.19	88.44	7,354.7	-1,565.4	3,144.6	3,362.3	1.70	-0.37	-1.66
10,197.0	90.04	88.61	7,353.7	-1,563.0	3,239.6	3,455.5	1.22	-1.21	0.18
10,291.0	91.28	89.32	7,352.6	-1,561.3	3,333.5	3,547.9	1.52	1.32	0.76
10,386.0	89.60	88.09	7,351.9	-1,559.1	3,428.5	3,641.1	2.19	-1.77	-1.29
10,480.0	90.66	88.09	7,351.6	-1,556.0	3,522.4	3,733.2	1.13	1.13	0.00
10,575.0	87.85	87.73	7,352.9	-1,552.5	3,617.4	3,826.2	2.98	-2.96	-0.38
10,670.0	88.99	88.44	7,355.5	-1,549.4	3,712.3	3,919.3	1.41	1.20	0.75
10,764.0	88.81	88.09	7,357.3	-1,546.5	3,806.2	4,011.4	0.42	-0.19	-0.37
10,858.0	89.34	87.91	7,358.8	-1,543.2	3,900.1	4,103.5	0.60	0.56	-0.19
10,952.0	89.78	87.38	7,359.5	-1,539.4	3,994.1	4,195.4	0.73	0.47	-0.56
11,046.0	90.40	87.21	7,359.4	-1,534.9	4,088.0	4,287.2	0.68	0.66	-0.18
11,141.0	89.52	87.03	7,359.5	-1,530.2	4,182.8	4,380.0	0.95	-0.93	-0.19
11,235.0	89.87	89.49	7,360.0	-1,527.3	4,276.8	4,472.1	2.64	0.37	2.62
11,330.0	90.57	88.61	7,359.6	-1,525.7	4,371.8	4,565.5	1.18	0.74	-0.93
11,425.0	91.28	90.02	7,358.1	-1,524.6	4,466.7	4,659.0	1.66	0.75	1.48
11,519.0	91.89	89.32	7,355.5	-1,524.1	4,560.7	4,751.5	0.99	0.65	-0.74
11,614.0	90.22	89.49	7,353.7	-1,523.1	4,655.7	4,845.0	1.77	-1.76	0.18
11,709.0	91.36	89.49	7,352.4	-1,522.2	4,750.7	4,938.5	1.20	1.20	0.00
11,803.0	89.25	90.02	7,351.9	-1,521.8	4,844.7	5,031.1	2.31	-2.24	0.56
11,898.0	90.75	89.84	7,351.9	-1,521.7	4,939.7	5,124.7	1.59	1.58	-0.19
11,992.0	88.46	89.32	7,352.5	-1,521.0	5,033.6	5,217.3	2.50	-2.44	-0.55
12,087.0	89.16	88.97	7,354.5	-1,519.6	5,128.6	5,310.6	0.82	0.74	-0.37
12,181.0	88.81	87.38	7,356.2	-1,516.6	5,222.5	5,402.8	1.73	-0.37	-1.69
12,276.0	89.78	88.97	7,357.4	-1,513.6	5,317.5	5,495.8	1.96	1.02	1.67
12,371.0	89.96	88.09	7,357.6	-1,511.1	5,412.5	5,589.1	0.95	0.19	-0.93
12,465.0	90.40	87.03	7,357.3	-1,507.1	5,506.4	5,681.0	1.22	0.47	-1.13
12,559.0	89.25	89.14	7,357.6	-1,504.0	5,600.3	5,773.1	2.56	-1.22	2.24
12,654.0	88.99	87.03	7,359.0	-1,500.8	5,695.2	5,866.1	2.24	-0.27	-2.22
12,749.0	88.90	89.14	7,360.8	-1,497.7	5,790.2	5,959.2	2.22	-0.09	2.22
12,844.0	91.10	89.84	7,360.8	-1,496.8	5,885.2	6,052.7	2.43	2.32	0.74
12,939.0	91.98	88.97	7,358.2	-1,495.8	5,980.1	6,146.1	1.30	0.93	-0.92
13,033.0	90.31	90.37	7,356.3	-1,495.3	6,074.1	6,238.7	2.32	-1.78	1.49
13,128.0	90.84	89.49	7,355.4	-1,495.2	6,169.1	6,332.3	1.08	0.56	-0.93
13,222.0	89.96	91.60	7,354.7	-1,496.1	6,263.1	6,425.1	2.43	-0.94	2.24

Company:	Bayswater Exploration & Production, LLC	Local Co-ordinate Reference:	Well COT EAST V-30-29HN
Project:	SEC.30-T7N-R66W	TVD Reference:	WELL @ 4971.0ft (Original Well Elev)
Site:	COT 30J Pad Sec.30-T7N-R66W	MD Reference:	WELL @ 4971.0ft (Original Well Elev)
Well:	COT EAST V-30-29HN	North Reference:	True
Wellbore:	COT EAST V-30-29HN Wellbore #1	Survey Calculation Method:	Minimum Curvature
Design:	COT EAST V-30-29HN Wellbore #1	Database:	US_EDM

Measured Depth (ft)	Inclination (°)	Azimuth (°)	Vertical Depth (ft)	+N/-S (ft)	+E/-W (ft)	Vertical Section (ft)	Dogleg Rate (°/100usft)	Build Rate (°/100usft)	Turn Rate (°/100usft)
13,317.0	90.31	91.43	7,354.5	-1,498.6	6,358.0	6,519.2	0.41	0.37	-0.18
13,412.0	90.13	90.02	7,354.1	-1,499.8	6,453.0	6,613.0	1.50	-0.19	-1.48
13,506.0	90.04	88.97	7,354.0	-1,498.9	6,547.0	6,705.6	1.12	-0.10	-1.12
13,600.0	89.87	90.20	7,354.1	-1,498.3	6,641.0	6,798.1	1.32	-0.18	1.31
13,694.0	89.96	89.49	7,354.2	-1,498.0	6,735.0	6,890.8	0.76	0.10	-0.76
13,788.0	90.31	88.97	7,354.0	-1,496.7	6,829.0	6,983.2	0.67	0.37	-0.55
13,882.0	90.48	88.61	7,353.3	-1,494.8	6,923.0	7,075.5	0.42	0.18	-0.38
13,977.0	90.84	90.55	7,352.3	-1,494.1	7,018.0	7,169.1	2.08	0.38	2.04
14,071.0	89.60	87.73	7,351.9	-1,492.7	7,111.9	7,261.5	3.28	-1.32	-3.00
14,165.0	90.40	91.78	7,351.9	-1,492.2	7,205.9	7,354.1	4.39	0.85	4.31
14,259.0	90.40	90.37	7,351.2	-1,494.0	7,299.9	7,447.0	1.50	0.00	-1.50
14,353.0	90.40	88.61	7,350.6	-1,493.2	7,393.9	7,539.5	1.87	0.00	-1.87
14,447.0	90.75	87.91	7,349.6	-1,490.3	7,487.8	7,631.7	0.83	0.37	-0.74
14,542.0	90.13	88.97	7,348.9	-1,487.7	7,582.8	7,724.9	1.29	-0.65	1.12
14,636.0	88.90	86.68	7,349.7	-1,484.2	7,676.7	7,816.9	2.77	-1.31	-2.44
14,731.0	89.60	89.14	7,350.9	-1,480.7	7,771.6	7,909.9	2.69	0.74	2.59
14,826.0	89.78	88.44	7,351.5	-1,478.7	7,866.6	8,003.2	0.76	0.19	-0.74
14,920.0	90.13	87.73	7,351.5	-1,475.6	7,960.6	8,095.3	0.84	0.37	-0.76
15,015.0	90.31	91.43	7,351.2	-1,474.9	8,055.6	8,188.8	3.90	0.19	3.89
15,109.0	90.31	90.55	7,350.7	-1,476.5	8,149.5	8,281.7	0.94	0.00	-0.94
15,204.0	90.57	90.55	7,349.9	-1,477.4	8,244.5	8,375.5	0.27	0.27	0.00
15,298.0	90.66	89.32	7,348.9	-1,477.3	8,338.5	8,468.2	1.31	0.10	-1.31
15,393.0	90.75	87.03	7,347.8	-1,474.3	8,433.5	8,561.2	2.41	0.09	-2.41
15,488.0	90.57	83.87	7,346.7	-1,466.7	8,528.1	8,653.3	3.33	-0.19	-3.33
15,523.0	90.75	84.22	7,346.3	-1,463.1	8,562.9	8,687.0	1.12	0.51	1.00
15,583.0	90.75	84.22	7,345.5	-1,457.1	8,622.6	8,744.9	0.00	0.00	0.00

Target Name	Dip Angle (°)	Dip Dir. (°)	TVD (ft)	+N/-S (ft)	+E/-W (ft)	Northing (usft)	Easting (usft)	Latitude	Longitude
SHL 2106'FSL & 2003'F1 - hit/miss target - Shape - Point	0.00	0.00	1.0	0.0	0.0	1,441,673.58	3,187,646.62	40.543833	-104.824810
Projected BHL 510'FSL i - survey misses target center by 11.4ft at 15583.0ft MD (7345.5 TVD, -1457.1 N, 8622.6 E) - Point	0.00	0.00	7,346.0	-1,465.6	8,630.2	1,440,273.77	3,196,287.44	40.539806	-104.793760

Company:	Bayswater Exploration & Production, LLC	Local Co-ordinate Reference:	Well COT EAST V-30-29HN
Project:	SEC.30-T7N-R66W	TVD Reference:	WELL @ 4971.0ft (Original Well Elev)
Site:	COT 30J Pad Sec.30-T7N-R66W	MD Reference:	WELL @ 4971.0ft (Original Well Elev)
Well:	COT EAST V-30-29HN	North Reference:	True
Wellbore:	COT EAST V-30-29HN Wellbore #1	Survey Calculation Method:	Minimum Curvature
Design:	COT EAST V-30-29HN Wellbore #1	Database:	US_EDM

Survey Annotations				
Measured Depth (ft)	Vertical Depth (ft)	Local Coordinates		Comment
		+N/-S (ft)	+E/-W (ft)	
7,959.2	7,342.5	-1,589.9	1,002.6	Crosses 460' Setback - 502'FSL, 2381'FEL, Sec.30

Checked By: _____ Approved By: _____ Date: _____