

# Bayswater Exploration & Production, LLC

Well Name: **COT EAST S-30-29HN**

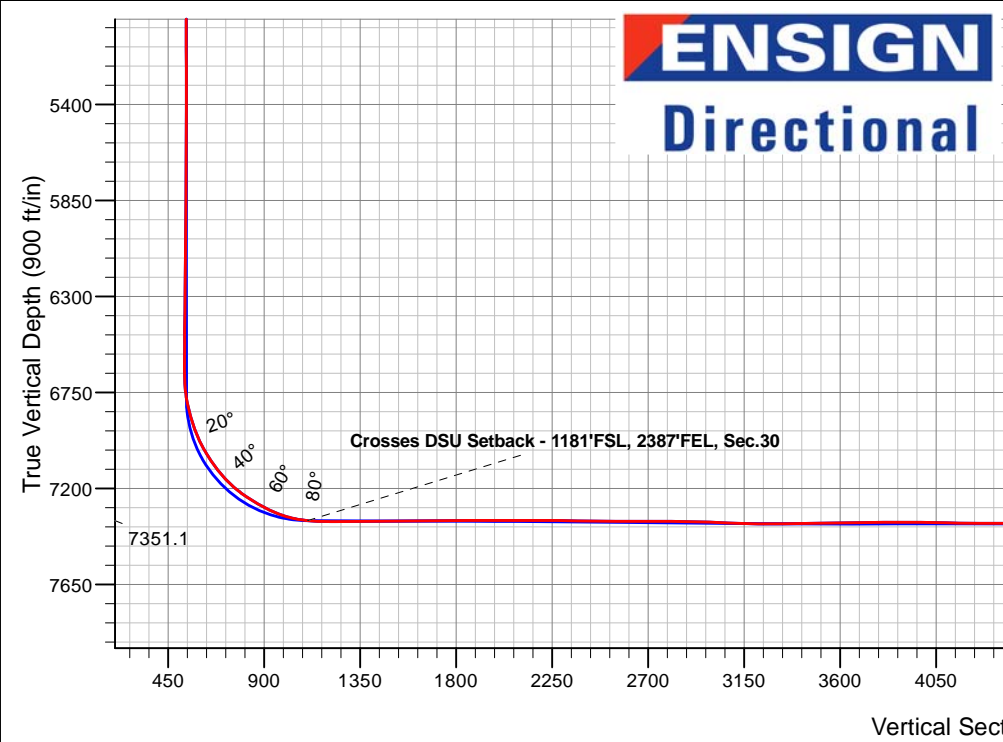
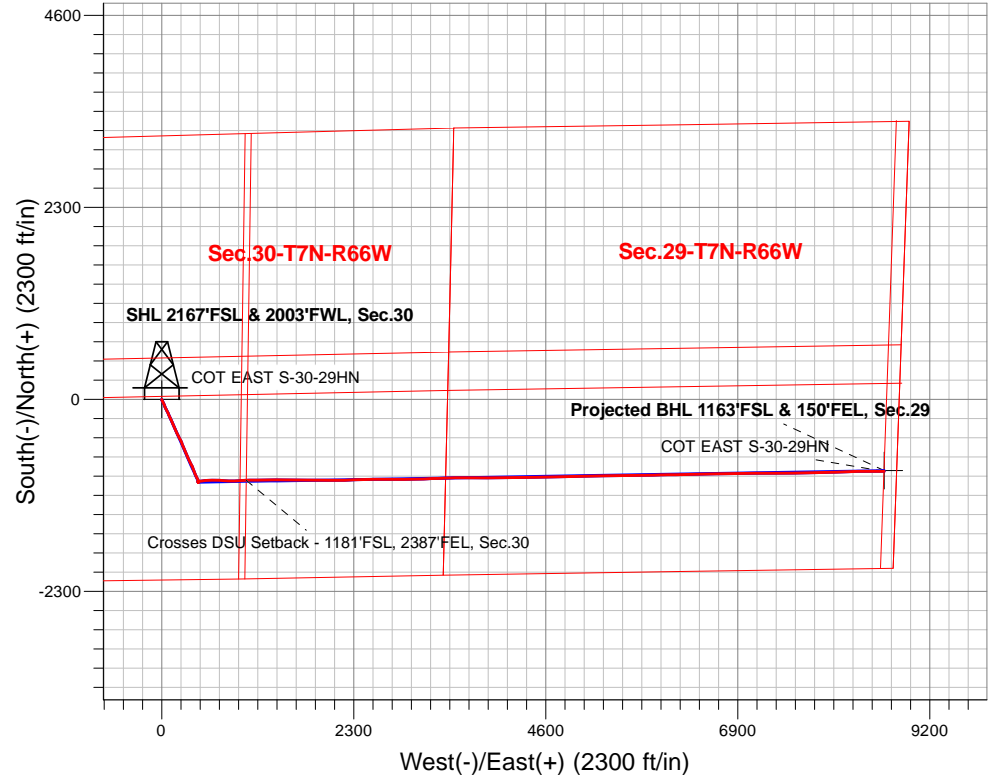
Surface Location: COT 30J Pad Sec.30-T7N-R66W  
 North American Datum 1983 , US State Plane 1983, Colorado Northern Zone  
 Ground Elevation: 4946.0

+N/-S	+E/-W	Northing	Easting	Latitude	Longitude	Slot
0.0	0.0	1441733.68	3187646.72	40.543998	-104.824808	

Original Well Elev WELL @ 4971.0ft (Original Well Elev)

## FINAL SURVEY

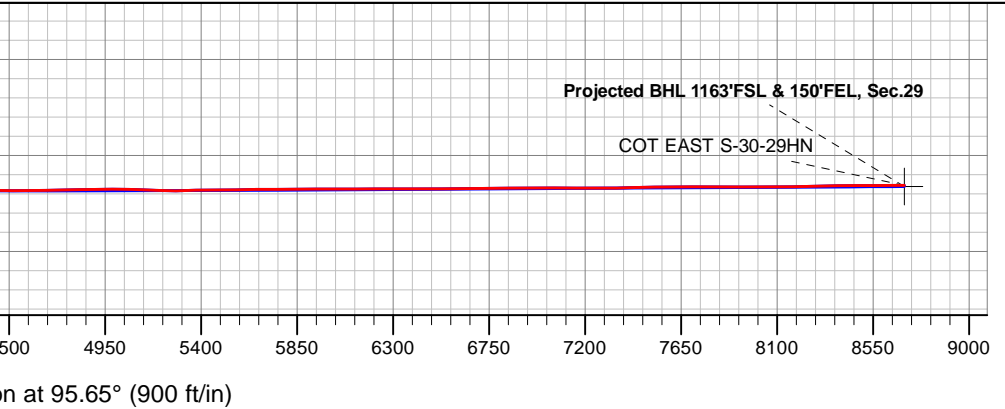
**Projected Bottom Hole Location**  
**15,431'MD 7340'TVD 864'S & 8653'E of SHL**  
**90.57 degree Incl @ 90.02 degree AZM**



COT 30J Pad Sec.30-T7N-R66W  
 COT EAST S-30-29HN  
 COT EAST S-30-29HN Wellbore #1  
 9:10, December 26 2019

ANNOTATIONS		
TVD	MD	Annotation
7351.1	7787.6	Crosses DSU Setback - 1181'FSL, 2387'FEL, Sec.30

LEGEND	
	COT EAST S-30-29HN, COT EAST S-30-29HN Wellbore #1, Plan #3 (12-14-19) V0
	COT EAST S-30-29HN Wellbore #1
	Survey #1





# **Bayswater Exploration & Production, LLC**

**SEC.30-T7N-R66W**

**COT 30J Pad Sec.30-T7N-R66W**

**COT EAST S-30-29HN**

**COT EAST S-30-29HN Wellbore #1**

**Survey: Survey #1**

## **Standard Survey Report**

**26 December, 2019**



<b>Company:</b>	Bayswater Exploration & Production, LLC	<b>Local Co-ordinate Reference:</b>	Well COT EAST S-30-29HN
<b>Project:</b>	SEC.30-T7N-R66W	<b>TVD Reference:</b>	WELL @ 4971.0ft (Original Well Elev)
<b>Site:</b>	COT 30J Pad Sec.30-T7N-R66W	<b>MD Reference:</b>	WELL @ 4971.0ft (Original Well Elev)
<b>Well:</b>	COT EAST S-30-29HN	<b>North Reference:</b>	True
<b>Wellbore:</b>	COT EAST S-30-29HN Wellbore #1	<b>Survey Calculation Method:</b>	Minimum Curvature
<b>Design:</b>	COT EAST S-30-29HN Wellbore #1	<b>Database:</b>	US_EDM

<b>Project</b>	SEC.30-T7N-R66W, Weld County, CO		
<b>Map System:</b>	US State Plane 1983	<b>System Datum:</b>	Mean Sea Level
<b>Geo Datum:</b>	North American Datum 1983		Using Well Reference Point
<b>Map Zone:</b>	Colorado Northern Zone		Using geodetic scale factor

<b>Site</b>	COT 30J Pad Sec.30-T7N-R66W				
<b>Site Position:</b>		<b>Northing:</b>	1,441,808.15 usft	<b>Latitude:</b>	40.544203
<b>From:</b>	Lat/Long	<b>Easting:</b>	3,187,616.69 usft	<b>Longitude:</b>	-104.824914
<b>Position Uncertainty:</b>	0.0 ft	<b>Slot Radius:</b>	13-3/16 "	<b>Grid Convergence:</b>	0.44 °

<b>Well</b>	COT EAST S-30-29HN					
<b>Well Position</b>	<b>+N/-S</b>	0.0 ft	<b>Northing:</b>	1,441,733.68 usft	<b>Latitude:</b>	40.543998
	<b>+E/-W</b>	0.0 ft	<b>Easting:</b>	3,187,646.72 usft	<b>Longitude:</b>	-104.824808
<b>Position Uncertainty</b>		0.0 ft	<b>Wellhead Elevation:</b>	0.0 ft	<b>Ground Level:</b>	4,946.0 ft

<b>Wellbore</b>	COT EAST S-30-29HN Wellbore #1				
<b>Magnetics</b>	<b>Model Name</b>	<b>Sample Date</b>	<b>Declination (°)</b>	<b>Dip Angle (°)</b>	<b>Field Strength (nT)</b>
	HDGM	12/14/2019	7.93	66.90	52,229

<b>Design</b>	COT EAST S-30-29HN Wellbore #1				
<b>Audit Notes:</b>					
<b>Version:</b>	1.0	<b>Phase:</b>	ACTUAL	<b>Tie On Depth:</b>	0.0
<b>Vertical Section:</b>	<b>Depth From (TVD) (ft)</b>	<b>+N/-S (ft)</b>	<b>+E/-W (ft)</b>	<b>Direction (°)</b>	
	0.0	0.0	0.0	95.65	

<b>Survey Program</b>	<b>Date</b>	12/26/2019			
<b>From (ft)</b>	<b>To (ft)</b>	<b>Survey (Wellbore)</b>	<b>Tool Name</b>	<b>Description</b>	
216.0	15,431.0	Survey #1 (COT EAST S-30-29HN Wellbo	MWD	MWD - Standard	

<b>Survey</b>										
<b>Measured Depth (ft)</b>	<b>Inclination (°)</b>	<b>Azimuth (°)</b>	<b>Vertical Depth (ft)</b>	<b>+N/-S (ft)</b>	<b>+E/-W (ft)</b>	<b>Vertical Section (ft)</b>	<b>Dogleg Rate (°/100usft)</b>	<b>Build Rate (°/100usft)</b>	<b>Turn Rate (°/100usft)</b>	
0.0	0.00	0.00	0.0	0.0	0.0	0.0	0.00	0.00	0.00	
216.0	1.10	195.00	216.0	-2.0	-0.5	-0.3	0.51	0.51	0.00	
311.0	2.80	168.10	310.9	-5.2	-0.3	0.2	1.99	1.79	-28.32	
406.0	3.90	160.70	405.8	-10.5	1.3	2.3	1.24	1.16	-7.79	
500.0	5.50	152.40	499.4	-17.5	4.4	6.1	1.85	1.70	-8.83	
595.0	8.20	152.80	593.8	-27.5	9.6	12.3	2.84	2.84	0.42	
689.0	9.90	156.00	686.6	-40.9	16.0	19.9	1.89	1.81	3.40	
783.0	11.90	154.70	778.9	-57.0	23.4	28.9	2.14	2.13	-1.38	
877.0	12.90	158.80	870.7	-75.6	31.3	38.6	1.42	1.06	4.36	
972.0	13.10	154.90	963.3	-95.2	39.7	48.9	0.95	0.21	-4.11	

<b>Company:</b>	Bayswater Exploration & Production, LLC	<b>Local Co-ordinate Reference:</b>	Well COT EAST S-30-29HN
<b>Project:</b>	SEC.30-T7N-R66W	<b>TVD Reference:</b>	WELL @ 4971.0ft (Original Well Elev)
<b>Site:</b>	COT 30J Pad Sec.30-T7N-R66W	<b>MD Reference:</b>	WELL @ 4971.0ft (Original Well Elev)
<b>Well:</b>	COT EAST S-30-29HN	<b>North Reference:</b>	True
<b>Wellbore:</b>	COT EAST S-30-29HN Wellbore #1	<b>Survey Calculation Method:</b>	Minimum Curvature
<b>Design:</b>	COT EAST S-30-29HN Wellbore #1	<b>Database:</b>	US_EDM

Survey										
Measured Depth (ft)	Inclination (°)	Azimuth (°)	Vertical Depth (ft)	+N/-S (ft)	+E/-W (ft)	Vertical Section (ft)	Dogleg Rate (°/100usft)	Build Rate (°/100usft)	Turn Rate (°/100usft)	
1,067.0	12.50	150.50	1,055.9	-113.9	49.4	60.3	1.20	-0.63	-4.63	
1,162.0	11.30	155.60	1,148.9	-131.3	58.3	70.9	1.68	-1.26	5.37	
1,256.0	11.00	156.50	1,241.1	-148.0	65.6	79.9	0.37	-0.32	0.96	
1,351.0	11.80	155.10	1,334.2	-165.1	73.3	89.2	0.89	0.84	-1.47	
1,445.0	11.70	155.30	1,426.2	-182.5	81.4	98.9	0.11	-0.11	0.21	
1,515.0	11.70	155.30	1,494.8	-195.3	87.3	106.1	0.00	0.00	0.00	
1,663.0	11.08	156.11	1,639.9	-222.0	99.3	120.7	0.43	-0.42	0.55	
1,758.0	12.31	154.71	1,732.9	-239.5	107.4	130.4	1.33	1.29	-1.47	
1,853.0	14.25	157.17	1,825.4	-259.4	116.2	141.2	2.13	2.04	2.59	
1,948.0	16.44	157.34	1,917.0	-282.6	125.9	153.1	2.31	2.31	0.18	
2,042.0	18.64	156.64	2,006.6	-308.7	137.0	166.7	2.35	2.34	-0.74	
2,136.0	18.38	155.41	2,095.7	-335.9	149.1	181.5	0.50	-0.28	-1.31	
2,231.0	18.29	154.36	2,185.9	-363.0	161.8	196.8	0.36	-0.09	-1.11	
2,325.0	17.85	154.88	2,275.3	-389.3	174.3	211.8	0.50	-0.47	0.55	
2,420.0	17.50	153.83	2,365.8	-415.3	186.8	226.8	0.50	-0.37	-1.11	
2,515.0	16.97	154.00	2,456.5	-440.6	199.2	241.6	0.56	-0.56	0.18	
2,609.0	16.27	153.65	2,546.6	-464.8	211.0	255.7	0.75	-0.74	-0.37	
2,704.0	17.32	154.88	2,637.5	-489.5	223.0	270.0	1.17	1.11	1.29	
2,799.0	16.71	154.53	2,728.4	-514.6	234.8	284.3	0.65	-0.64	-0.37	
2,894.0	18.64	159.10	2,818.9	-541.1	246.1	298.2	2.50	2.03	4.81	
2,989.0	18.47	158.22	2,909.0	-569.3	257.1	311.9	0.34	-0.18	-0.93	
3,084.0	17.94	157.52	2,999.2	-596.8	268.3	325.7	0.60	-0.56	-0.74	
3,177.0	17.15	156.99	3,087.9	-622.6	279.1	339.0	0.87	-0.85	-0.57	
3,271.0	16.62	156.47	3,177.8	-647.7	289.9	352.2	0.59	-0.56	-0.55	
3,388.0	15.92	155.76	3,290.1	-677.7	303.2	368.4	0.62	-0.60	-0.61	
3,483.0	16.88	156.99	3,381.3	-702.3	313.9	381.5	1.07	1.01	1.29	
3,578.0	15.48	154.71	3,472.5	-726.4	324.7	394.6	1.62	-1.47	-2.40	
3,672.0	16.44	154.00	3,562.9	-749.7	335.9	408.0	1.04	1.02	-0.76	
3,766.0	15.30	151.19	3,653.3	-772.6	347.7	422.0	1.46	-1.21	-2.99	
3,861.0	15.83	150.66	3,744.8	-794.8	360.1	436.6	0.58	0.56	-0.56	
3,955.0	16.88	160.33	3,835.0	-818.9	371.0	449.8	3.10	1.12	10.29	
4,050.0	16.97	160.16	3,925.9	-844.9	380.3	461.6	0.11	0.09	-0.18	
4,144.0	15.30	160.51	4,016.2	-869.5	389.1	472.8	1.78	-1.78	0.37	
4,239.0	13.98	157.87	4,108.1	-891.9	397.6	483.5	1.56	-1.39	-2.78	
4,334.0	12.40	156.11	4,200.6	-911.9	406.1	493.8	1.72	-1.66	-1.85	
4,428.0	10.90	153.13	4,292.7	-929.1	414.2	503.6	1.72	-1.60	-3.17	
4,522.0	9.15	153.48	4,385.2	-943.7	421.6	512.3	1.86	-1.86	0.37	
4,617.0	8.00	155.94	4,479.2	-956.5	427.6	519.6	1.27	-1.21	2.59	
4,711.0	7.21	161.56	4,572.3	-968.0	432.2	525.3	1.15	-0.84	5.98	
4,806.0	5.80	164.90	4,666.7	-978.3	435.3	529.4	1.54	-1.48	3.52	
4,901.0	4.13	173.52	4,761.4	-986.4	436.9	531.8	1.92	-1.76	9.07	
4,995.0	2.99	166.66	4,855.2	-992.1	437.9	533.4	1.29	-1.21	-7.30	
5,089.0	0.70	185.64	4,949.1	-995.1	438.4	534.1	2.49	-2.44	20.19	
5,184.0	0.62	165.25	5,044.1	-996.1	438.5	534.3	0.26	-0.08	-21.46	

<b>Company:</b>	Bayswater Exploration & Production, LLC	<b>Local Co-ordinate Reference:</b>	Well COT EAST S-30-29HN
<b>Project:</b>	SEC.30-T7N-R66W	<b>TVD Reference:</b>	WELL @ 4971.0ft (Original Well Elev)
<b>Site:</b>	COT 30J Pad Sec.30-T7N-R66W	<b>MD Reference:</b>	WELL @ 4971.0ft (Original Well Elev)
<b>Well:</b>	COT EAST S-30-29HN	<b>North Reference:</b>	True
<b>Wellbore:</b>	COT EAST S-30-29HN Wellbore #1	<b>Survey Calculation Method:</b>	Minimum Curvature
<b>Design:</b>	COT EAST S-30-29HN Wellbore #1	<b>Database:</b>	US_EDM

Survey										
Measured Depth (ft)	Inclination (°)	Azimuth (°)	Vertical Depth (ft)	+N/-S (ft)	+E/-W (ft)	Vertical Section (ft)	Dogleg Rate (°/100usft)	Build Rate (°/100usft)	Turn Rate (°/100usft)	
5,278.0	0.44	164.20	5,138.1	-997.0	438.7	534.6	0.19	-0.19	-1.12	
5,372.0	0.18	148.73	5,232.1	-997.5	438.9	534.9	0.29	-0.28	-16.46	
5,466.0	0.09	94.41	5,326.1	-997.6	439.0	535.0	0.16	-0.10	-57.79	
5,561.0	0.18	345.61	5,421.1	-997.4	439.1	535.0	0.24	0.09	-114.53	
5,656.0	0.26	330.31	5,516.1	-997.1	438.9	534.9	0.10	0.08	-16.11	
5,750.0	0.44	319.24	5,610.1	-996.7	438.6	534.5	0.20	0.19	-11.78	
5,845.0	0.62	319.59	5,705.1	-996.0	438.0	533.8	0.19	0.19	0.37	
5,939.0	0.70	321.35	5,799.1	-995.2	437.3	533.1	0.09	0.09	1.87	
6,034.0	0.70	319.77	5,894.1	-994.3	436.6	532.3	0.02	0.00	-1.66	
6,128.0	0.62	312.73	5,988.1	-993.5	435.8	531.4	0.12	-0.09	-7.49	
6,223.0	0.70	313.26	6,083.1	-992.7	435.0	530.6	0.08	0.08	0.56	
6,318.0	0.70	316.25	6,178.1	-991.9	434.2	529.7	0.04	0.00	3.15	
6,413.0	0.62	328.20	6,273.1	-991.1	433.5	528.9	0.17	-0.08	12.58	
6,508.0	0.62	323.11	6,368.1	-990.2	433.0	528.3	0.06	0.00	-5.36	
6,601.0	0.70	327.85	6,461.1	-989.3	432.4	527.6	0.10	0.09	5.10	
6,696.0	0.44	335.76	6,556.1	-988.5	431.9	527.0	0.29	-0.27	8.33	
6,791.0	0.44	322.58	6,651.1	-987.9	431.5	526.6	0.11	0.00	-13.87	
6,885.0	6.24	76.66	6,744.9	-986.4	436.3	531.2	6.84	6.17	121.36	
6,980.0	15.48	76.13	6,838.1	-982.2	453.6	548.1	9.73	9.73	-0.56	
7,074.0	20.49	84.92	6,927.5	-977.7	482.2	576.1	6.05	5.33	9.35	
7,169.0	29.63	86.86	7,013.4	-974.9	522.3	615.7	9.66	9.62	2.04	
7,264.0	36.14	87.91	7,093.2	-972.6	573.8	666.7	6.88	6.85	1.11	
7,358.0	44.32	88.26	7,164.9	-970.6	634.5	726.9	8.71	8.70	0.37	
7,452.0	54.78	94.77	7,225.8	-972.8	705.8	798.1	12.30	11.13	6.93	
7,547.0	60.15	93.18	7,276.9	-978.3	785.7	878.1	5.83	5.65	-1.67	
7,642.0	68.76	88.26	7,317.8	-979.3	871.2	963.3	10.19	9.06	-5.18	
7,737.0	79.40	85.63	7,343.9	-974.4	962.3	1,053.5	11.51	11.20	-2.77	
7,787.6	84.09	87.25	7,351.1	-971.3	1,012.3	1,102.9	9.79	9.26	3.19	
<b>Crosses DSU Setback - 1181'FSL, 2387'FEL, Sec.30</b>										
7,831.0	88.11	88.61	7,354.1	-969.7	1,055.6	1,145.8	9.79	9.27	3.14	
7,926.0	90.04	90.72	7,355.6	-969.1	1,150.5	1,240.3	3.01	2.03	2.22	
8,020.0	90.31	88.09	7,355.3	-968.2	1,244.5	1,333.7	2.81	0.29	-2.80	
8,115.0	90.48	89.14	7,354.7	-965.9	1,339.5	1,428.0	1.12	0.18	1.11	
8,210.0	91.80	90.72	7,352.8	-965.7	1,434.5	1,522.5	2.17	1.39	1.66	
8,304.0	90.13	91.25	7,351.2	-967.4	1,528.4	1,616.2	1.86	-1.78	0.56	
8,399.0	89.87	89.49	7,351.2	-968.0	1,623.4	1,710.8	1.87	-0.27	-1.85	
8,493.0	89.87	91.25	7,351.4	-968.6	1,717.4	1,804.4	1.87	0.00	1.87	
8,588.0	90.40	90.90	7,351.2	-970.4	1,812.4	1,899.1	0.67	0.56	-0.37	
8,683.0	90.84	91.25	7,350.2	-972.1	1,907.4	1,993.8	0.59	0.46	0.37	
8,777.0	88.90	88.61	7,350.4	-972.0	2,001.4	2,087.3	3.49	-2.06	-2.81	
8,872.0	91.28	90.55	7,350.2	-971.3	2,096.3	2,181.7	3.23	2.51	2.04	
8,966.0	88.90	88.44	7,350.1	-970.5	2,190.3	2,275.2	3.38	-2.53	-2.24	
9,061.0	88.64	86.86	7,352.1	-966.6	2,285.2	2,369.2	1.69	-0.27	-1.66	

<b>Company:</b>	Bayswater Exploration & Production, LLC	<b>Local Co-ordinate Reference:</b>	Well COT EAST S-30-29HN
<b>Project:</b>	SEC.30-T7N-R66W	<b>TVD Reference:</b>	WELL @ 4971.0ft (Original Well Elev)
<b>Site:</b>	COT 30J Pad Sec.30-T7N-R66W	<b>MD Reference:</b>	WELL @ 4971.0ft (Original Well Elev)
<b>Well:</b>	COT EAST S-30-29HN	<b>North Reference:</b>	True
<b>Wellbore:</b>	COT EAST S-30-29HN Wellbore #1	<b>Survey Calculation Method:</b>	Minimum Curvature
<b>Design:</b>	COT EAST S-30-29HN Wellbore #1	<b>Database:</b>	US_EDM

Survey										
Measured Depth (ft)	Inclination (°)	Azimuth (°)	Vertical Depth (ft)	+N/-S (ft)	+E/-W (ft)	Vertical Section (ft)	Dogleg Rate (°/100usft)	Build Rate (°/100usft)	Turn Rate (°/100usft)	
9,155.0	88.64	87.73	7,354.3	-962.2	2,379.1	2,462.2	0.93	0.00	0.93	
9,251.0	90.84	88.97	7,354.8	-959.4	2,475.0	2,557.4	2.63	2.29	1.29	
9,345.0	90.31	90.72	7,353.8	-959.2	2,569.0	2,650.9	1.95	-0.56	1.86	
9,440.0	90.22	90.55	7,353.4	-960.2	2,664.0	2,745.6	0.20	-0.09	-0.18	
9,535.0	88.37	90.02	7,354.6	-960.7	2,759.0	2,840.1	2.03	-1.95	-0.56	
9,629.0	88.29	89.84	7,357.3	-960.6	2,853.0	2,933.6	0.21	-0.09	-0.19	
9,724.0	87.67	89.32	7,360.7	-959.9	2,947.9	3,028.0	0.85	-0.65	-0.55	
9,818.0	88.90	88.26	7,363.5	-957.9	3,041.9	3,121.3	1.73	1.31	-1.13	
9,913.0	88.99	88.26	7,365.2	-955.0	3,136.8	3,215.5	0.09	0.09	0.00	
10,008.0	90.40	88.09	7,365.7	-952.0	3,231.7	3,309.7	1.49	1.48	-0.18	
10,102.0	90.66	87.56	7,364.9	-948.4	3,325.7	3,402.8	0.63	0.28	-0.56	
10,197.0	90.84	87.21	7,363.6	-944.1	3,420.6	3,496.8	0.41	0.19	-0.37	
10,292.0	91.45	89.84	7,361.7	-941.6	3,515.5	3,591.1	2.84	0.64	2.77	
10,386.0	90.48	90.37	7,360.1	-941.8	3,609.5	3,684.6	1.18	-1.03	0.56	
10,481.0	91.54	90.02	7,358.5	-942.1	3,704.5	3,779.2	1.18	1.12	-0.37	
10,576.0	88.81	90.72	7,358.2	-942.7	3,799.5	3,873.8	2.97	-2.87	0.74	
10,671.0	89.43	90.90	7,359.6	-944.1	3,894.4	3,968.4	0.68	0.65	0.19	
10,765.0	88.46	88.61	7,361.4	-943.7	3,988.4	4,061.9	2.65	-1.03	-2.44	
10,860.0	89.34	89.32	7,363.2	-942.0	4,083.4	4,156.2	1.19	0.93	0.75	
10,955.0	89.43	88.61	7,364.2	-940.3	4,178.4	4,250.6	0.75	0.09	-0.75	
11,049.0	91.01	89.84	7,363.8	-939.0	4,272.3	4,344.0	2.13	1.68	1.31	
11,143.0	88.55	88.09	7,364.2	-937.3	4,366.3	4,437.3	3.21	-2.62	-1.86	
11,237.0	90.31	89.32	7,365.1	-935.2	4,460.3	4,530.6	2.28	1.87	1.31	
11,332.0	90.48	88.61	7,364.5	-933.4	4,555.3	4,625.0	0.77	0.18	-0.75	
11,426.0	91.10	88.26	7,363.2	-930.9	4,649.2	4,718.2	0.76	0.66	-0.37	
11,521.0	91.89	88.09	7,360.7	-927.9	4,744.1	4,812.4	0.85	0.83	-0.18	
11,615.0	90.48	89.14	7,358.8	-925.6	4,838.1	4,905.7	1.87	-1.50	1.12	
11,710.0	89.87	89.67	7,358.5	-924.6	4,933.1	5,000.1	0.85	-0.64	0.56	
11,804.0	87.58	90.02	7,360.6	-924.3	5,027.0	5,093.6	2.46	-2.44	0.37	
11,899.0	88.20	89.67	7,364.1	-924.1	5,122.0	5,188.0	0.75	0.65	-0.37	
11,993.0	90.40	87.73	7,365.2	-922.0	5,215.9	5,281.3	3.12	2.34	-2.06	
12,088.0	91.80	88.26	7,363.4	-918.6	5,310.9	5,375.5	1.58	1.47	0.56	
12,182.0	90.13	88.79	7,361.8	-916.2	5,404.8	5,468.7	1.86	-1.78	0.56	
12,277.0	91.01	89.32	7,360.9	-914.6	5,499.8	5,563.1	1.08	0.93	0.56	
12,372.0	90.31	90.37	7,359.8	-914.4	5,594.8	5,657.6	1.33	-0.74	1.11	
12,467.0	90.04	88.97	7,359.5	-913.8	5,689.8	5,752.1	1.50	-0.28	-1.47	
12,562.0	91.19	88.97	7,358.5	-912.1	5,784.8	5,846.4	1.21	1.21	0.00	
12,656.0	89.69	88.79	7,357.7	-910.3	5,878.7	5,939.8	1.61	-1.60	-0.19	
12,751.0	90.57	88.09	7,357.5	-907.7	5,973.7	6,034.0	1.18	0.93	-0.74	
12,845.0	89.87	89.49	7,357.2	-905.7	6,067.7	6,127.3	1.67	-0.74	1.49	
12,940.0	91.01	89.32	7,356.4	-904.7	6,162.7	6,221.8	1.21	1.20	-0.18	
13,034.0	88.99	88.97	7,356.4	-903.3	6,256.6	6,315.2	2.18	-2.15	-0.37	
13,129.0	89.78	88.44	7,357.4	-901.2	6,351.6	6,409.5	1.00	0.83	-0.56	
13,223.0	90.84	88.09	7,356.9	-898.3	6,445.6	6,502.7	1.19	1.13	-0.37	

<b>Company:</b>	Bayswater Exploration & Production, LLC	<b>Local Co-ordinate Reference:</b>	Well COT EAST S-30-29HN
<b>Project:</b>	SEC.30-T7N-R66W	<b>TVD Reference:</b>	WELL @ 4971.0ft (Original Well Elev)
<b>Site:</b>	COT 30J Pad Sec.30-T7N-R66W	<b>MD Reference:</b>	WELL @ 4971.0ft (Original Well Elev)
<b>Well:</b>	COT EAST S-30-29HN	<b>North Reference:</b>	True
<b>Wellbore:</b>	COT EAST S-30-29HN Wellbore #1	<b>Survey Calculation Method:</b>	Minimum Curvature
<b>Design:</b>	COT EAST S-30-29HN Wellbore #1	<b>Database:</b>	US_EDM

Measured Depth (ft)	Inclination (°)	Azimuth (°)	Vertical Depth (ft)	+N/-S (ft)	+E/-W (ft)	Vertical Section (ft)	Dogleg Rate (°/100usft)	Build Rate (°/100usft)	Turn Rate (°/100usft)
13,318.0	90.48	89.14	7,355.8	-896.0	6,540.5	6,597.0	1.17	-0.38	1.11
13,412.0	91.19	88.61	7,354.5	-894.2	6,634.5	6,690.3	0.94	0.76	-0.56
13,507.0	89.87	89.14	7,353.6	-892.3	6,729.5	6,784.6	1.50	-1.39	0.56
13,602.0	91.19	89.49	7,352.7	-891.2	6,824.5	6,879.0	1.44	1.39	0.37
13,696.0	89.69	89.14	7,352.0	-890.1	6,918.5	6,972.5	1.64	-1.60	-0.37
13,791.0	89.43	88.97	7,352.7	-888.5	7,013.4	7,066.8	0.33	-0.27	-0.18
13,885.0	90.13	89.49	7,353.1	-887.2	7,107.4	7,160.2	0.93	0.74	0.55
13,979.0	89.69	89.67	7,353.2	-886.6	7,201.4	7,253.7	0.51	-0.47	0.19
14,074.0	91.01	90.55	7,352.6	-886.7	7,296.4	7,348.3	1.67	1.39	0.93
14,169.0	91.71	90.55	7,350.4	-887.7	7,391.4	7,442.9	0.74	0.74	0.00
14,263.0	90.48	88.79	7,348.6	-887.1	7,485.4	7,536.3	2.28	-1.31	-1.87
14,358.0	91.28	88.61	7,347.1	-885.0	7,580.3	7,630.6	0.86	0.84	-0.19
14,453.0	88.81	88.97	7,347.1	-882.9	7,675.3	7,724.9	2.63	-2.60	0.38
14,547.0	89.43	89.14	7,348.5	-881.4	7,769.3	7,818.3	0.68	0.66	0.18
14,642.0	90.57	89.84	7,348.5	-880.6	7,864.3	7,912.8	1.41	1.20	0.74
14,737.0	90.40	87.91	7,347.7	-878.7	7,959.2	8,007.1	2.04	-0.18	-2.03
14,832.0	90.31	87.21	7,347.1	-874.6	8,054.2	8,101.1	0.74	-0.09	-0.74
14,926.0	91.01	86.86	7,346.0	-869.8	8,148.0	8,194.1	0.83	0.74	-0.37
15,020.0	91.19	88.97	7,344.2	-866.4	8,241.9	8,287.2	2.25	0.19	2.24
15,115.0	91.63	88.61	7,341.9	-864.4	8,336.9	8,381.5	0.60	0.46	-0.38
15,209.0	89.34	90.20	7,341.1	-863.4	8,430.9	8,474.9	2.97	-2.44	1.69
15,304.0	90.31	90.02	7,341.4	-863.6	8,525.9	8,569.5	1.04	1.02	-0.19
15,371.0	90.57	90.02	7,340.9	-863.6	8,592.9	8,636.1	0.39	0.39	0.00
15,431.0	90.57	90.02	7,340.3	-863.6	8,652.9	8,695.9	0.00	0.00	0.00

Target Name	Dip Angle (°)	Dip Dir. (°)	TVD (ft)	+N/-S (ft)	+E/-W (ft)	Northing (usft)	Easting (usft)	Latitude	Longitude
SHL 2167'FSL & 2003'F1 - hit/miss target - Shape - Point	0.00	0.00	1.0	0.0	0.0	1,441,733.70	3,187,646.72	40.543998	-104.824808
Projected BHL 1163'FSL - survey misses target center by 10.1ft at 15431.0ft MD (7340.3 TVD, -863.6 N, 8652.9 E) - Point	0.00	0.00	7,346.0	-855.4	8,653.3	1,440,944.27	3,196,306.00	40.541646	-104.793674

Measured Depth (ft)	Vertical Depth (ft)	Local Coordinates +N/-S (ft)	+E/-W (ft)	Comment
7,787.6	7,351.1	-971.3	1,012.3	Crosses DSU Setback - 1181'FSL, 2387'FEL, Sec.30

<b>Company:</b>	Bayswater Exploration & Production, LLC	<b>Local Co-ordinate Reference:</b>	Well COT EAST S-30-29HN
<b>Project:</b>	SEC.30-T7N-R66W	<b>TVD Reference:</b>	WELL @ 4971.0ft (Original Well Elev)
<b>Site:</b>	COT 30J Pad Sec.30-T7N-R66W	<b>MD Reference:</b>	WELL @ 4971.0ft (Original Well Elev)
<b>Well:</b>	COT EAST S-30-29HN	<b>North Reference:</b>	True
<b>Wellbore:</b>	COT EAST S-30-29HN Wellbore #1	<b>Survey Calculation Method:</b>	Minimum Curvature
<b>Design:</b>	COT EAST S-30-29HN Wellbore #1	<b>Database:</b>	US_EDM

Checked By: \_\_\_\_\_ Approved By: \_\_\_\_\_ Date: \_\_\_\_\_