

Bayswater Exploration & Production, LLC

Well Name: **COT EAST R-30-29HN**

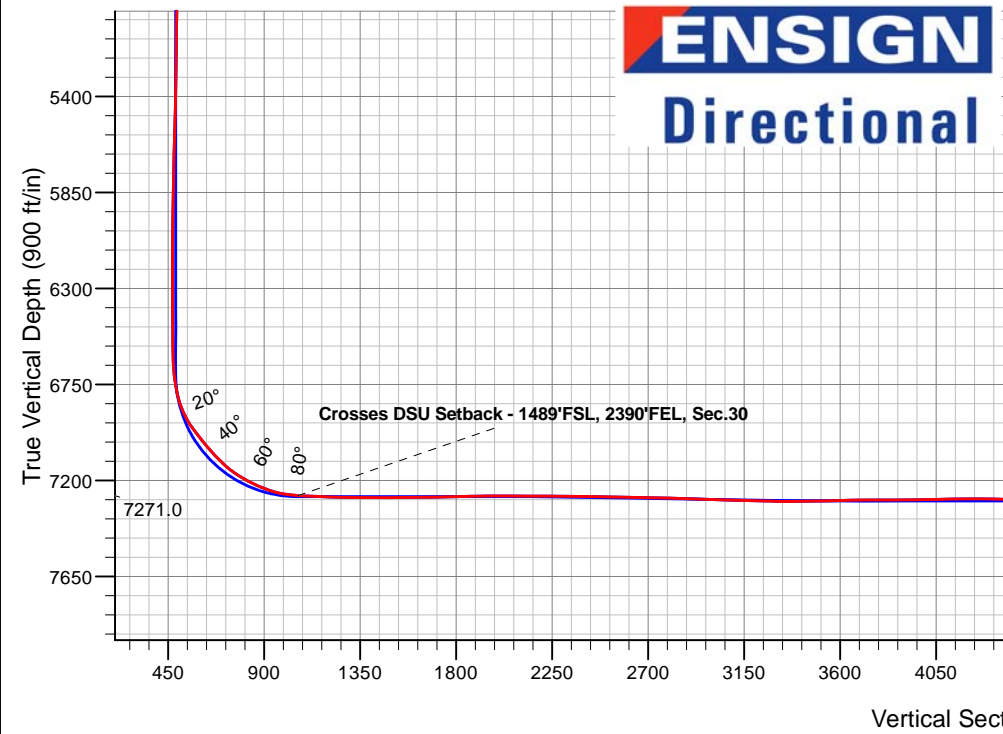
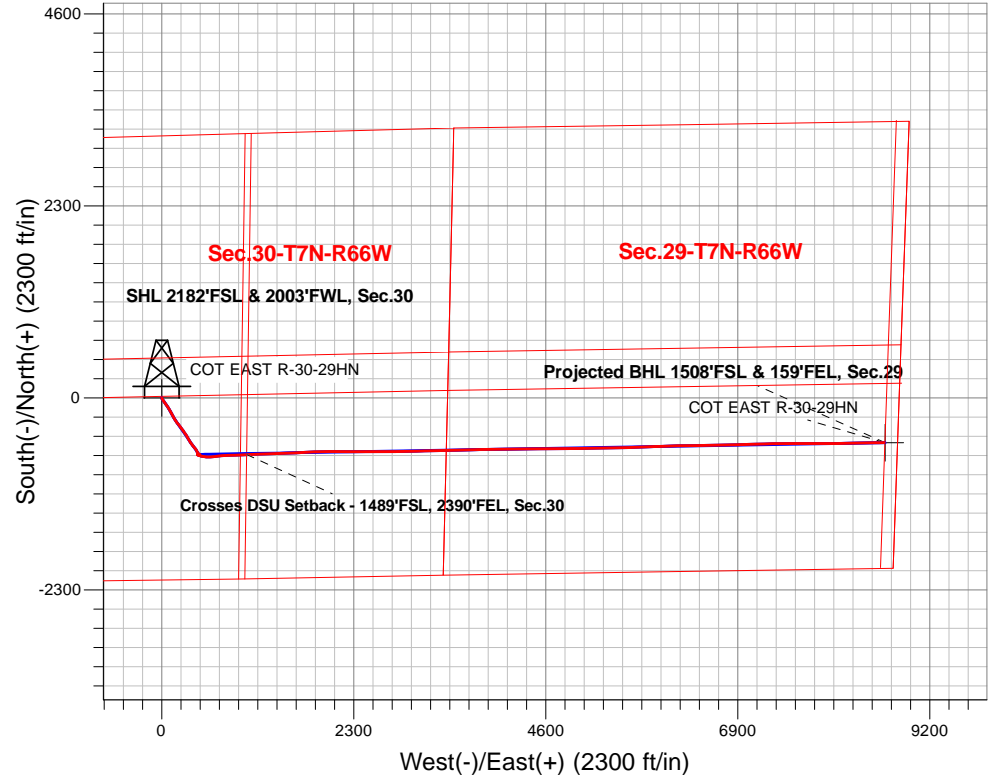
Surface Location: COT 30J Pad Sec.30-T7N-R66W
 North American Datum 1983 , US State Plane 1983, Colorado Northern Zone
 Ground Elevation: 4946.0

+N/-S	+E/-W	Northing	Easting	Latitude	Longitude	Slot
0.0	0.0	1441748.62	3187646.88	40.544039	-104.824807	

Original Well Elev WELL @ 4971.0ft (Original Well Elev)

FINAL SURVEY

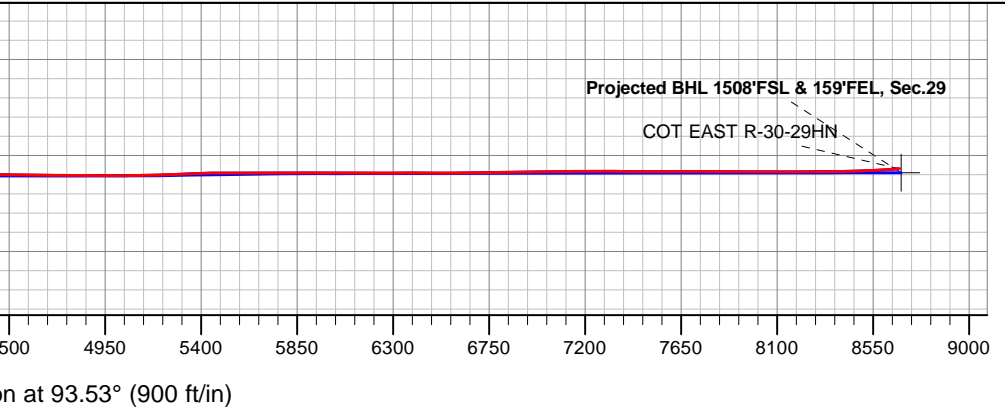
Projected Bottom Hole Location
15,330'MD 7262'TVD 533'S & 8656'E of SHL
94.18 degree Incl @ 88.26 degree AZM



COT 30J Pad Sec.30-T7N-R66W
 COT EAST R-30-29HN
 COT EAST R-30-29HN Wellbore #1
 7:08, December 17 2019

ANNOTATIONS		
TVD	MD	Annotation
7271.0	7687.2	Crosses DSU Setback - 1489'FSL, 2390'FEL, Sec.30

LEGEND	
	COT EAST R-30-29HN, COT EAST R-30-29HN Wellbore #1, Plan #3 (12-9-19) V0
	COT EAST R-30-29HN Wellbore #1
	Survey #1





Bayswater Exploration & Production, LLC

SEC.30-T7N-R66W

COT 30J Pad Sec.30-T7N-R66W

COT EAST R-30-29HN

COT EAST R-30-29HN Wellbore #1

Survey: Survey #1

Standard Survey Report

17 December, 2019



Company:	Bayswater Exploration & Production, LLC	Local Co-ordinate Reference:	Well COT EAST R-30-29HN
Project:	SEC.30-T7N-R66W	TVD Reference:	WELL @ 4971.0ft (Original Well Elev)
Site:	COT 30J Pad Sec.30-T7N-R66W	MD Reference:	WELL @ 4971.0ft (Original Well Elev)
Well:	COT EAST R-30-29HN	North Reference:	True
Wellbore:	COT EAST R-30-29HN Wellbore #1	Survey Calculation Method:	Minimum Curvature
Design:	COT EAST R-30-29HN Wellbore #1	Database:	US_EDM

Project	SEC.30-T7N-R66W, Weld County, CO		
Map System:	US State Plane 1983	System Datum:	Mean Sea Level
Geo Datum:	North American Datum 1983		Using Well Reference Point
Map Zone:	Colorado Northern Zone		Using geodetic scale factor

Site	COT 30J Pad Sec.30-T7N-R66W				
Site Position:		Northing:	1,441,808.15 usft	Latitude:	40.544203
From:	Lat/Long	Easting:	3,187,616.69 usft	Longitude:	-104.824914
Position Uncertainty:	0.0 ft	Slot Radius:	13-3/16 "	Grid Convergence:	0.44 °

Well	COT EAST R-30-29HN					
Well Position	+N/-S	0.0 ft	Northing:	1,441,748.63 usft	Latitude:	40.544039
	+E/-W	0.0 ft	Easting:	3,187,646.88 usft	Longitude:	-104.824807
Position Uncertainty		0.0 ft	Wellhead Elevation:	0.0 ft	Ground Level:	4,946.0 ft

Wellbore	COT EAST R-30-29HN Wellbore #1				
Magnetics	Model Name	Sample Date	Declination (°)	Dip Angle (°)	Field Strength (nT)
	HDGM	12/9/2019	7.93	66.90	52,231

Design	COT EAST R-30-29HN Wellbore #1				
Audit Notes:					
Version:	1.0	Phase:	ACTUAL	Tie On Depth:	0.0
Vertical Section:	Depth From (TVD) (ft)	+N/-S (ft)	+E/-W (ft)	Direction (°)	
	0.0	0.0	0.0	93.53	

Survey Program	Date	12/17/2019			
From (ft)	To (ft)	Survey (Wellbore)	Tool Name	Description	
215.0	15,330.0	Survey #1 (COT EAST R-30-29HN Wellbo	MWD	MWD - Standard	

Survey										
Measured Depth (ft)	Inclination (°)	Azimuth (°)	Vertical Depth (ft)	+N/-S (ft)	+E/-W (ft)	Vertical Section (ft)	Dogleg Rate (°/100usft)	Build Rate (°/100usft)	Turn Rate (°/100usft)	
0.0	0.00	0.00	0.0	0.0	0.0	0.0	0.00	0.00	0.00	
215.0	1.00	168.60	215.0	-1.8	0.4	0.5	0.47	0.47	0.00	
310.0	2.20	163.20	310.0	-4.4	1.1	1.3	1.27	1.26	-5.68	
404.0	3.50	152.40	403.8	-8.7	2.9	3.4	1.49	1.38	-11.49	
499.0	4.70	145.60	498.6	-14.4	6.5	7.3	1.36	1.26	-7.16	
594.0	6.10	144.70	593.2	-21.8	11.6	12.9	1.48	1.47	-0.95	
688.0	7.30	148.20	686.5	-30.9	17.6	19.5	1.35	1.28	3.72	
782.0	9.10	147.50	779.6	-42.3	24.7	27.3	1.92	1.91	-0.74	
876.0	10.50	143.80	872.2	-55.5	33.8	37.2	1.63	1.49	-3.94	
971.0	11.70	145.10	965.4	-70.3	44.4	48.7	1.29	1.26	1.37	

Company:	Bayswater Exploration & Production, LLC	Local Co-ordinate Reference:	Well COT EAST R-30-29HN
Project:	SEC.30-T7N-R66W	TVD Reference:	WELL @ 4971.0ft (Original Well Elev)
Site:	COT 30J Pad Sec.30-T7N-R66W	MD Reference:	WELL @ 4971.0ft (Original Well Elev)
Well:	COT EAST R-30-29HN	North Reference:	True
Wellbore:	COT EAST R-30-29HN Wellbore #1	Survey Calculation Method:	Minimum Curvature
Design:	COT EAST R-30-29HN Wellbore #1	Database:	US_EDM

Survey									
Measured Depth (ft)	Inclination (°)	Azimuth (°)	Vertical Depth (ft)	+N/-S (ft)	+E/-W (ft)	Vertical Section (ft)	Dogleg Rate (°/100usft)	Build Rate (°/100usft)	Turn Rate (°/100usft)
1,065.0	12.50	145.40	1,057.3	-86.5	55.7	60.9	0.85	0.85	0.32
1,160.0	12.80	142.90	1,150.0	-103.4	67.8	74.1	0.66	0.32	-2.63
1,255.0	13.70	147.90	1,242.5	-121.3	80.2	87.5	1.53	0.95	5.26
1,350.0	14.60	150.90	1,334.6	-141.3	92.0	100.5	1.22	0.95	3.16
1,444.0	16.20	153.10	1,425.2	-163.4	103.7	113.5	1.81	1.70	2.34
1,516.0	16.70	151.90	1,494.3	-181.4	113.1	124.0	0.84	0.69	-1.67
1,663.0	17.06	150.66	1,634.9	-218.9	133.6	146.8	0.35	0.24	-0.84
1,758.0	18.82	150.84	1,725.3	-244.4	147.9	162.7	1.85	1.85	0.19
1,853.0	19.70	146.09	1,815.0	-271.1	164.3	180.7	1.89	0.93	-5.00
1,947.0	18.47	143.46	1,903.8	-296.2	182.0	199.9	1.60	-1.31	-2.80
2,042.0	18.20	142.75	1,994.0	-320.1	199.9	219.3	0.37	-0.28	-0.75
2,137.0	17.59	141.70	2,084.4	-343.2	217.8	238.5	0.73	-0.64	-1.11
2,232.0	16.88	143.46	2,175.2	-365.5	234.9	257.0	0.93	-0.75	1.85
2,326.0	16.88	142.58	2,265.1	-387.3	251.3	274.7	0.27	0.00	-0.94
2,421.0	15.65	146.45	2,356.3	-408.9	266.8	291.5	1.73	-1.29	4.07
2,516.0	15.12	145.92	2,447.9	-429.9	280.8	306.8	0.58	-0.56	-0.56
2,611.0	15.21	149.08	2,539.6	-450.8	294.2	321.4	0.88	0.09	3.33
2,705.0	14.95	147.85	2,630.4	-471.7	307.0	335.5	0.44	-0.28	-1.31
2,800.0	16.36	148.56	2,721.8	-493.5	320.5	350.3	1.50	1.48	0.75
2,895.0	16.27	148.56	2,813.0	-516.2	334.4	365.6	0.09	-0.09	0.00
2,989.0	16.53	146.27	2,903.2	-538.6	348.7	381.2	0.74	0.28	-2.44
3,084.0	15.83	144.51	2,994.4	-560.4	363.7	397.6	0.90	-0.74	-1.85
3,179.0	13.63	140.64	3,086.3	-579.6	378.3	413.3	2.54	-2.32	-4.07
3,272.0	13.28	139.77	3,176.7	-596.2	392.2	428.2	0.43	-0.38	-0.94
3,391.0	11.87	146.27	3,292.9	-616.8	407.8	445.0	1.68	-1.18	5.46
3,486.0	9.94	152.25	3,386.2	-632.2	417.0	455.2	2.35	-2.03	6.29
3,580.0	8.09	151.89	3,479.0	-645.2	423.9	462.9	1.97	-1.97	-0.38
3,675.0	7.39	144.86	3,573.1	-656.1	430.6	470.2	1.24	-0.74	-7.40
3,769.0	5.72	157.52	3,666.5	-665.4	435.9	476.1	2.34	-1.78	13.47
3,864.0	4.04	149.61	3,761.2	-672.7	439.4	480.0	1.90	-1.77	-8.33
3,958.0	1.49	153.83	3,855.1	-676.6	441.6	482.5	2.72	-2.71	4.49
4,052.0	1.58	91.43	3,949.0	-677.7	443.4	484.4	1.69	0.10	-66.38
4,146.0	1.32	103.38	4,043.0	-678.0	445.8	486.7	0.42	-0.28	12.71
4,240.0	1.14	108.48	4,137.0	-678.6	447.7	488.7	0.22	-0.19	5.43
4,335.0	1.32	110.76	4,232.0	-679.3	449.6	490.7	0.20	0.19	2.40
4,429.0	1.23	107.25	4,325.9	-679.9	451.6	492.7	0.13	-0.10	-3.73
4,524.0	0.18	350.18	4,420.9	-680.1	452.6	493.6	1.39	-1.11	-123.23
4,618.0	0.18	191.45	4,514.9	-680.1	452.5	493.6	0.38	0.00	-168.86
4,713.0	0.35	297.62	4,609.9	-680.1	452.2	493.3	0.46	0.18	111.76
4,808.0	0.26	283.91	4,704.9	-679.9	451.8	492.8	0.12	-0.09	-14.43
4,902.0	0.53	273.18	4,798.9	-679.9	451.1	492.2	0.30	0.29	-11.41
4,997.0	0.79	261.06	4,893.9	-679.9	450.0	491.1	0.31	0.27	-12.76
5,091.0	0.79	237.50	4,987.9	-680.4	448.8	489.9	0.34	0.00	-25.06
5,185.0	0.62	267.73	5,081.9	-680.7	447.8	488.9	0.43	-0.18	32.16

Company:	Bayswater Exploration & Production, LLC	Local Co-ordinate Reference:	Well COT EAST R-30-29HN
Project:	SEC.30-T7N-R66W	TVD Reference:	WELL @ 4971.0ft (Original Well Elev)
Site:	COT 30J Pad Sec.30-T7N-R66W	MD Reference:	WELL @ 4971.0ft (Original Well Elev)
Well:	COT EAST R-30-29HN	North Reference:	True
Wellbore:	COT EAST R-30-29HN Wellbore #1	Survey Calculation Method:	Minimum Curvature
Design:	COT EAST R-30-29HN Wellbore #1	Database:	US_EDM

Survey										
Measured Depth (ft)	Inclination (°)	Azimuth (°)	Vertical Depth (ft)	+N/-S (ft)	+E/-W (ft)	Vertical Section (ft)	Dogleg Rate (°/100usft)	Build Rate (°/100usft)	Turn Rate (°/100usft)	
5,280.0	0.79	270.20	5,176.9	-680.8	446.6	487.7	0.18	0.18	2.60	
5,374.0	0.97	299.38	5,270.9	-680.4	445.3	486.4	0.51	0.19	31.04	
5,469.0	1.23	292.87	5,365.9	-679.6	443.6	484.7	0.30	0.27	-6.85	
5,564.0	1.23	287.07	5,460.9	-678.9	441.7	482.7	0.13	0.00	-6.11	
5,658.0	1.32	277.75	5,554.8	-678.4	439.7	480.7	0.24	0.10	-9.91	
5,753.0	1.49	271.07	5,649.8	-678.3	437.4	478.3	0.25	0.18	-7.03	
5,847.0	1.76	272.66	5,743.8	-678.2	434.7	475.7	0.29	0.29	1.69	
5,942.0	1.58	267.91	5,838.7	-678.2	431.9	472.9	0.24	-0.19	-5.00	
6,036.0	0.18	247.70	5,932.7	-678.3	430.5	471.5	1.50	-1.49	-21.50	
6,131.0	0.53	248.93	6,027.7	-678.5	430.0	471.0	0.37	0.37	1.29	
6,225.0	0.53	226.78	6,121.7	-678.9	429.2	470.3	0.22	0.00	-23.56	
6,320.0	0.26	183.01	6,216.7	-679.5	428.9	470.0	0.41	-0.28	-46.07	
6,415.0	0.35	154.18	6,311.7	-679.9	429.0	470.1	0.18	0.09	-30.35	
6,509.0	0.62	139.77	6,405.7	-680.6	429.5	470.6	0.31	0.29	-15.33	
6,604.0	0.79	147.85	6,500.7	-681.5	430.1	471.3	0.21	0.18	8.51	
6,698.0	0.88	148.03	6,594.7	-682.7	430.9	472.1	0.10	0.10	0.19	
6,793.0	4.92	103.91	6,689.5	-684.3	435.2	476.6	4.56	4.25	-46.44	
6,888.0	11.78	108.83	6,783.5	-688.4	448.4	489.9	7.25	7.22	5.18	
6,983.0	23.39	105.14	6,873.9	-696.5	475.8	517.9	12.27	12.22	-3.88	
7,077.0	36.49	96.70	6,955.2	-704.7	521.8	564.3	14.61	13.94	-8.98	
7,172.0	39.92	85.80	7,029.9	-705.7	580.4	622.8	7.95	3.61	-11.47	
7,266.0	44.05	84.39	7,099.8	-700.3	643.0	684.9	4.51	4.39	-1.50	
7,361.0	54.96	83.16	7,161.4	-692.4	714.7	756.0	11.53	11.48	-1.29	
7,456.0	63.66	90.02	7,209.9	-687.8	796.1	837.0	11.06	9.16	7.22	
7,550.0	70.96	87.21	7,246.1	-685.6	882.7	923.3	8.24	7.77	-2.99	
7,645.0	83.54	85.98	7,267.0	-680.1	975.0	1,015.1	13.30	13.24	-1.29	
7,687.2	85.57	87.15	7,271.0	-677.6	1,017.0	1,056.8	5.55	4.81	2.78	
Crosses DSU Setback - 1489'FSL, 2390'FEL, Sec.30										
7,740.0	88.11	88.61	7,274.0	-675.7	1,069.7	1,109.3	5.55	4.81	2.76	
7,835.0	87.32	88.61	7,277.7	-673.4	1,164.6	1,203.8	0.83	-0.83	0.00	
7,930.0	90.31	87.91	7,279.7	-670.5	1,259.5	1,298.4	3.23	3.15	-0.74	
8,024.0	89.08	87.21	7,280.2	-666.5	1,353.4	1,391.9	1.51	-1.31	-0.74	
8,118.0	90.92	88.79	7,280.2	-663.2	1,447.3	1,485.4	2.58	1.96	1.68	
8,213.0	90.75	88.44	7,278.8	-660.9	1,542.3	1,580.1	0.41	-0.18	-0.37	
8,307.0	89.25	85.80	7,278.8	-656.2	1,636.2	1,673.5	3.23	-1.60	-2.81	
8,402.0	92.07	86.33	7,277.7	-649.7	1,730.9	1,767.7	3.02	2.97	0.56	
8,496.0	91.54	88.61	7,274.8	-645.5	1,824.8	1,861.1	2.49	-0.56	2.43	
8,591.0	90.13	89.32	7,273.4	-643.8	1,919.7	1,955.8	1.66	-1.48	0.75	
8,686.0	90.04	88.97	7,273.2	-642.4	2,014.7	2,050.5	0.38	-0.09	-0.37	
8,781.0	89.69	90.55	7,273.5	-642.0	2,109.7	2,145.3	1.70	-0.37	1.66	
8,875.0	89.60	90.72	7,274.0	-643.0	2,203.7	2,239.2	0.20	-0.10	0.18	
8,970.0	89.43	90.20	7,274.9	-643.8	2,298.7	2,334.0	0.58	-0.18	-0.55	
9,065.0	89.16	90.20	7,276.0	-644.1	2,393.7	2,428.9	0.28	-0.28	0.00	

Company:	Bayswater Exploration & Production, LLC	Local Co-ordinate Reference:	Well COT EAST R-30-29HN
Project:	SEC.30-T7N-R66W	TVD Reference:	WELL @ 4971.0ft (Original Well Elev)
Site:	COT 30J Pad Sec.30-T7N-R66W	MD Reference:	WELL @ 4971.0ft (Original Well Elev)
Well:	COT EAST R-30-29HN	North Reference:	True
Wellbore:	COT EAST R-30-29HN Wellbore #1	Survey Calculation Method:	Minimum Curvature
Design:	COT EAST R-30-29HN Wellbore #1	Database:	US_EDM

Survey										
Measured Depth (ft)	Inclination (°)	Azimuth (°)	Vertical Depth (ft)	+N/-S (ft)	+E/-W (ft)	Vertical Section (ft)	Dogleg Rate (°/100usft)	Build Rate (°/100usft)	Turn Rate (°/100usft)	
9,159.0	88.99	90.02	7,277.5	-644.3	2,487.7	2,522.7	0.26	-0.18	-0.19	
9,254.0	89.43	89.84	7,278.8	-644.2	2,582.7	2,617.5	0.50	0.46	-0.19	
9,348.0	88.29	89.49	7,280.7	-643.6	2,676.7	2,711.2	1.27	-1.21	-0.37	
9,442.0	88.02	89.14	7,283.7	-642.5	2,770.6	2,804.9	0.47	-0.29	-0.37	
9,537.0	88.37	88.97	7,286.7	-640.9	2,865.5	2,899.6	0.41	0.37	-0.18	
9,632.0	88.20	88.97	7,289.6	-639.2	2,960.5	2,994.3	0.18	-0.18	0.00	
9,727.0	88.37	88.61	7,292.4	-637.2	3,055.4	3,088.9	0.42	0.18	-0.38	
9,821.0	88.64	88.79	7,294.9	-635.1	3,149.4	3,182.5	0.35	0.29	0.19	
9,916.0	88.20	88.79	7,297.5	-633.1	3,244.3	3,277.2	0.46	-0.46	0.00	
10,011.0	90.75	88.79	7,298.4	-631.1	3,339.3	3,371.8	2.68	2.68	0.00	
10,105.0	90.66	88.44	7,297.2	-628.8	3,433.2	3,465.5	0.38	-0.10	-0.37	
10,200.0	91.45	88.26	7,295.5	-626.1	3,528.2	3,560.1	0.85	0.83	-0.19	
10,295.0	91.71	87.73	7,292.8	-622.8	3,623.1	3,654.6	0.62	0.27	-0.56	
10,390.0	89.87	88.44	7,291.5	-619.6	3,718.0	3,749.1	2.08	-1.94	0.75	
10,484.0	89.87	88.09	7,291.7	-616.7	3,812.0	3,842.7	0.37	0.00	-0.37	
10,579.0	90.84	90.72	7,291.2	-615.8	3,907.0	3,937.5	2.95	1.02	2.77	
10,674.0	91.71	91.07	7,289.0	-617.2	4,001.9	4,032.4	0.99	0.92	0.37	
10,768.0	90.22	88.79	7,287.5	-617.1	4,095.9	4,126.2	2.90	-1.59	-2.43	
10,863.0	90.48	88.44	7,286.9	-614.8	4,190.9	4,220.8	0.46	0.27	-0.37	
10,957.0	88.90	88.97	7,287.4	-612.7	4,284.8	4,314.5	1.77	-1.68	0.56	
11,052.0	88.90	89.32	7,289.2	-611.3	4,379.8	4,409.2	0.37	0.00	0.37	
11,147.0	89.08	88.26	7,290.9	-609.3	4,474.8	4,503.8	1.13	0.19	-1.12	
11,242.0	89.08	88.44	7,292.4	-606.5	4,569.7	4,598.4	0.19	0.00	0.19	
11,337.0	89.87	89.32	7,293.3	-604.7	4,664.7	4,693.1	1.24	0.83	0.93	
11,431.0	89.87	90.55	7,293.5	-604.6	4,758.7	4,786.9	1.31	0.00	1.31	
11,526.0	89.87	90.37	7,293.7	-605.3	4,853.7	4,881.8	0.19	0.00	-0.19	
11,621.0	89.69	90.02	7,294.1	-605.7	4,948.7	4,976.6	0.41	-0.19	-0.37	
11,715.0	89.60	90.20	7,294.7	-605.8	5,042.7	5,070.5	0.21	-0.10	0.19	
11,810.0	91.80	88.44	7,293.5	-604.7	5,137.7	5,165.2	2.97	2.32	-1.85	
11,905.0	92.24	88.61	7,290.1	-602.3	5,232.6	5,259.8	0.50	0.46	0.18	
11,999.0	93.03	88.61	7,285.8	-600.0	5,326.5	5,353.3	0.84	0.84	0.00	
12,094.0	90.48	89.14	7,282.9	-598.1	5,421.4	5,447.9	2.74	-2.68	0.56	
12,188.0	89.87	88.61	7,282.6	-596.3	5,515.4	5,541.6	0.86	-0.65	-0.56	
12,282.0	90.40	88.26	7,282.4	-593.7	5,609.3	5,635.3	0.68	0.56	-0.37	
12,377.0	90.40	88.79	7,281.7	-591.3	5,704.3	5,729.9	0.56	0.00	0.56	
12,471.0	89.52	86.68	7,281.8	-587.6	5,798.2	5,823.4	2.43	-0.94	-2.24	
12,566.0	89.25	86.50	7,282.8	-581.9	5,893.0	5,917.7	0.34	-0.28	-0.19	
12,661.0	90.84	89.32	7,282.8	-578.4	5,988.0	6,012.2	3.41	1.67	2.97	
12,755.0	90.40	88.44	7,281.7	-576.6	6,081.9	6,105.9	1.05	-0.47	-0.94	
12,850.0	89.16	87.38	7,282.1	-573.1	6,176.9	6,200.5	1.72	-1.31	-1.12	
12,945.0	90.40	89.84	7,282.5	-570.8	6,271.8	6,295.1	2.90	1.31	2.59	
13,039.0	89.87	89.49	7,282.2	-570.3	6,365.8	6,388.9	0.68	-0.56	-0.37	
13,134.0	89.43	89.14	7,282.8	-569.2	6,460.8	6,483.6	0.59	-0.46	-0.37	
13,229.0	90.31	88.79	7,283.0	-567.4	6,555.8	6,578.3	1.00	0.93	-0.37	

Company:	Bayswater Exploration & Production, LLC	Local Co-ordinate Reference:	Well COT EAST R-30-29HN
Project:	SEC.30-T7N-R66W	TVD Reference:	WELL @ 4971.0ft (Original Well Elev)
Site:	COT 30J Pad Sec.30-T7N-R66W	MD Reference:	WELL @ 4971.0ft (Original Well Elev)
Well:	COT EAST R-30-29HN	North Reference:	True
Wellbore:	COT EAST R-30-29HN Wellbore #1	Survey Calculation Method:	Minimum Curvature
Design:	COT EAST R-30-29HN Wellbore #1	Database:	US_EDM

Measured Depth (ft)	Inclination (°)	Azimuth (°)	Vertical Depth (ft)	+N/-S (ft)	+E/-W (ft)	Vertical Section (ft)	Dogleg Rate (°/100usft)	Build Rate (°/100usft)	Turn Rate (°/100usft)
13,323.0	91.01	88.44	7,282.0	-565.2	6,649.8	6,672.0	0.83	0.74	-0.37
13,418.0	91.01	88.97	7,280.3	-563.0	6,744.7	6,766.6	0.56	0.00	0.56
13,513.0	91.01	88.61	7,278.6	-561.0	6,839.7	6,861.3	0.38	0.00	-0.38
13,607.0	91.80	88.44	7,276.3	-558.6	6,933.6	6,954.9	0.86	0.84	-0.18
13,702.0	89.43	88.79	7,275.3	-556.3	7,028.6	7,049.5	2.52	-2.49	0.37
13,796.0	90.40	88.44	7,275.4	-554.0	7,122.6	7,143.2	1.10	1.03	-0.37
13,891.0	90.57	87.73	7,274.6	-550.9	7,217.5	7,237.7	0.77	0.18	-0.75
13,986.0	89.08	88.79	7,274.9	-548.0	7,312.5	7,332.3	1.92	-1.57	1.12
14,080.0	89.96	89.84	7,275.7	-546.8	7,406.5	7,426.1	1.46	0.94	1.12
14,175.0	90.13	89.49	7,275.6	-546.3	7,501.4	7,520.9	0.41	0.18	-0.37
14,269.0	90.48	88.61	7,275.1	-544.7	7,595.4	7,614.6	1.01	0.37	-0.94
14,364.0	89.16	90.37	7,275.4	-543.9	7,690.4	7,709.3	2.32	-1.39	1.85
14,458.0	89.43	89.67	7,276.6	-543.9	7,784.4	7,803.1	0.80	0.29	-0.74
14,553.0	90.84	90.37	7,276.4	-544.0	7,879.4	7,898.0	1.66	1.48	0.74
14,647.0	89.08	89.67	7,276.4	-544.0	7,973.4	7,991.8	2.01	-1.87	-0.74
14,742.0	90.48	90.20	7,276.8	-543.9	8,068.4	8,086.6	1.58	1.47	0.56
14,837.0	90.92	89.84	7,275.6	-543.9	8,163.4	8,181.4	0.60	0.46	-0.38
14,931.0	89.52	88.97	7,275.3	-542.9	8,257.4	8,275.2	1.75	-1.49	-0.93
15,026.0	90.31	88.79	7,275.4	-541.1	8,352.4	8,369.8	0.85	0.83	-0.19
15,120.0	91.36	88.61	7,274.0	-538.9	8,446.3	8,463.5	1.13	1.12	-0.19
15,214.0	93.12	88.44	7,270.4	-536.5	8,540.2	8,557.1	1.88	1.87	-0.18
15,270.0	94.18	88.26	7,266.8	-534.9	8,596.1	8,612.7	1.92	1.89	-0.32
15,330.0	94.18	88.26	7,262.4	-533.1	8,655.9	8,672.3	0.00	0.00	0.00

Target Name	Dip Angle (°)	Dip Dir. (°)	TVD (ft)	+N/-S (ft)	+E/-W (ft)	Northing (usft)	Easting (usft)	Latitude	Longitude
SHL 2182'FSL & 2003'F1 - hit/miss target - Shape - Point	0.00	0.00	1.0	0.0	0.0	1,441,748.63	3,187,646.88	40.544039	-104.824807
Projected BHL 1508'FSL - survey misses target center by 20.7ft at 15330.0ft MD (7262.4 TVD, -533.1 N, 8655.9 E) - Point	0.00	0.00	7,281.0	-535.1	8,664.9	1,441,279.52	3,196,315.28	40.542566	-104.793631

Measured Depth (ft)	Vertical Depth (ft)	Local Coordinates +N/-S (ft)	+E/-W (ft)	Comment
7,687.2	7,271.0	-677.6	1,017.0	Crosses DSU Setback - 1489'FSL, 2390'FEL, Sec.30

Checked By: _____ Approved By: _____ Date: _____