

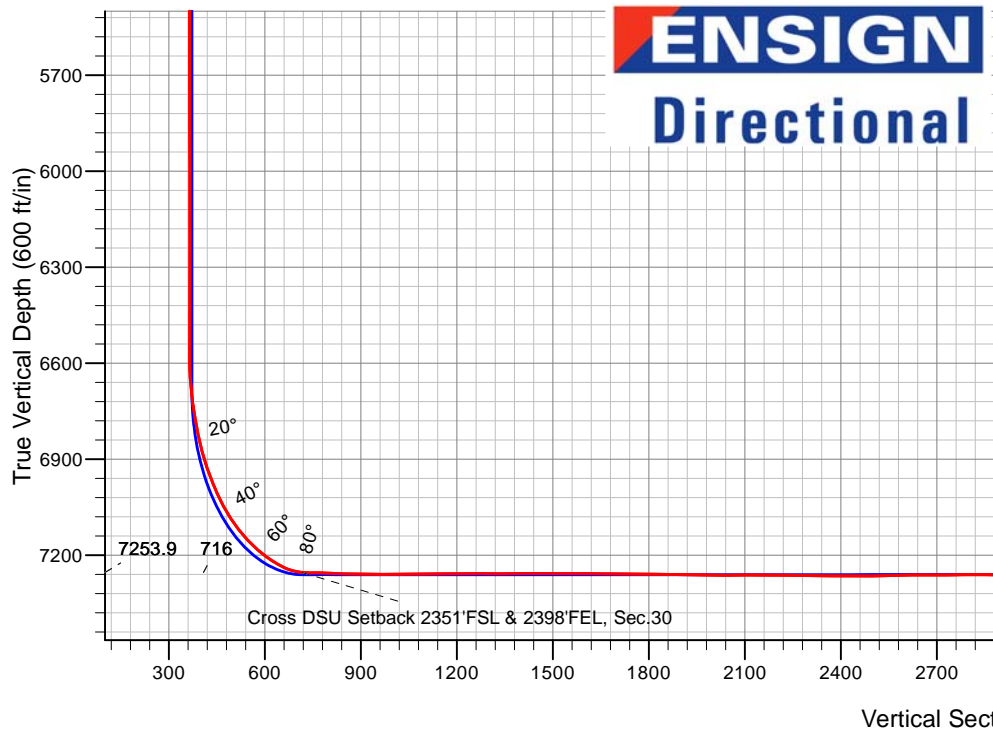
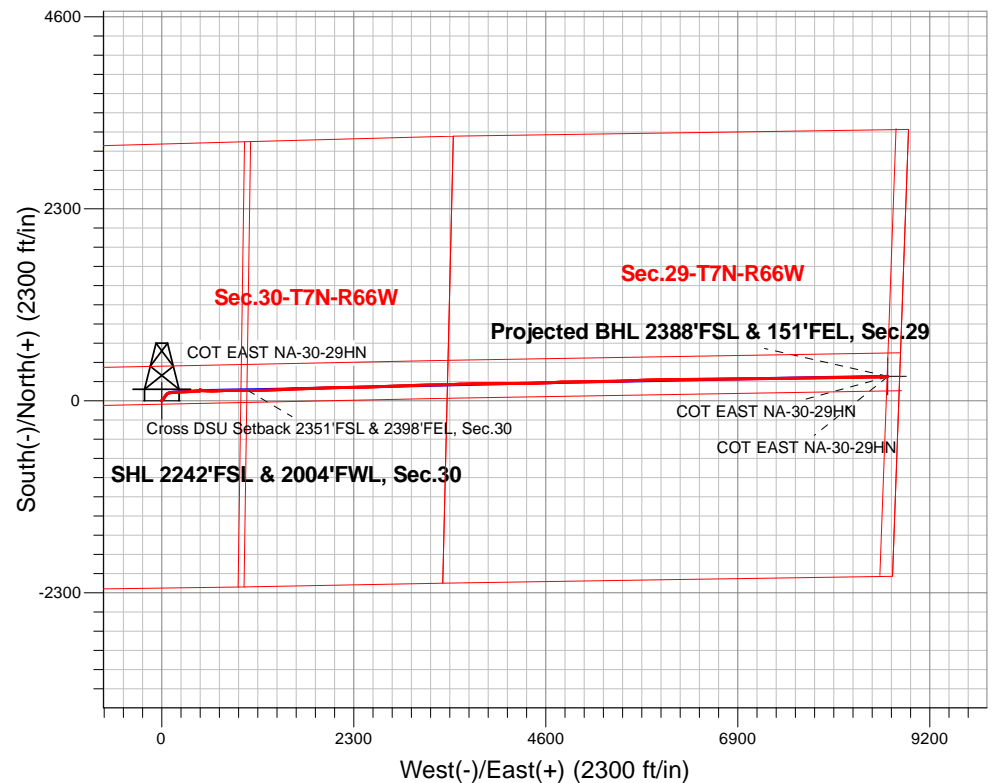
Bayswater Exploration & Production, LLC

Well Name: **COT EAST NA-30-29HN**

Surface Location: COT 30J Pad Sec.30-T7N-R66W
 North American Datum 1983 , US State Plane 1983, Colorado Northern Zone
 Ground Elevation: 4946.0
 +N/-S +E/-W Northing Easting Latitude Longitude Slot
 0.0 0.0 1441808.73 3187646.98 40.544204 -104.824805
 Original Well Elev WELL @ 4971.0ft (Original Well Elev)

FINAL SURVEY

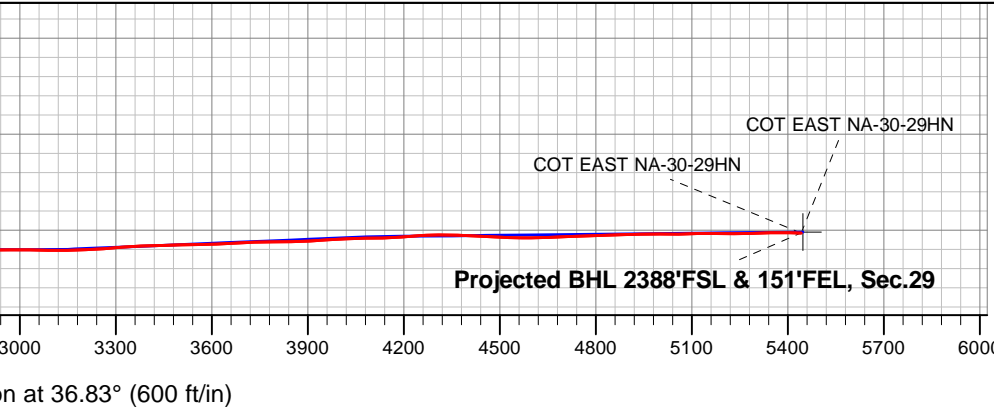
Projected Bottom Hole Location
15,273'MD 7209'TVD 287'N & 8695'E of SHL
89.87 degree Incl @ 88.86 degree AZM



COT 30J Pad Sec.30-T7N-R66W
 COT EAST NA-30-29HN
 COT EAST NA-30-29HN Wellbore #1
 15:54, November 21 2019

ANNOTATIONS			
TVD	MD	Annotation	
7253.9	7603.8	Cross DSU Setback 2351'FSL & 2398'FEL, Sec.30	

LEGEND	
	COT EAST NA-30-29HN, COT EAST NA-30-29HN Wellbore #1, Plan #4 (11-16-19) V0
	COT EAST NA-30-29HN Wellbore #1
	Survey #1





Bayswater Exploration & Production, LLC

SEC.30-T7N-R66W

COT 30J Pad Sec.30-T7N-R66W

COT EAST NA-30-29HN

COT EAST NA-30-29HN Wellbore #1

Survey: Survey #1

Standard Survey Report

21 November, 2019



Company:	Bayswater Exploration & Production, LLC	Local Co-ordinate Reference:	Well COT EAST NA-30-29HN
Project:	SEC.30-T7N-R66W	TVD Reference:	WELL @ 4971.0ft (Original Well Elev)
Site:	COT 30J Pad Sec.30-T7N-R66W	MD Reference:	WELL @ 4971.0ft (Original Well Elev)
Well:	COT EAST NA-30-29HN	North Reference:	True
Wellbore:	COT EAST NA-30-29HN Wellbore #1	Survey Calculation Method:	Minimum Curvature
Design:	COT EAST NA-30-29HN Wellbore #1	Database:	US_EDM

Project	SEC.30-T7N-R66W, Weld County, CO		
Map System:	US State Plane 1983	System Datum:	Mean Sea Level
Geo Datum:	North American Datum 1983		Using Well Reference Point
Map Zone:	Colorado Northern Zone		Using geodetic scale factor

Site	COT 30J Pad Sec.30-T7N-R66W				
Site Position:		Northing:	1,441,808.15 usft	Latitude:	40.544203
From:	Lat/Long	Easting:	3,187,616.69 usft	Longitude:	-104.824914
Position Uncertainty:	0.0 ft	Slot Radius:	13-3/16 "	Grid Convergence:	0.44 °

Well	COT EAST NA-30-29HN					
Well Position	+N/-S	0.0 ft	Northing:	1,441,808.74 usft	Latitude:	40.544204
	+E/-W	0.0 ft	Easting:	3,187,646.98 usft	Longitude:	-104.824805
Position Uncertainty		0.0 ft	Wellhead Elevation:	0.0 ft	Ground Level:	4,946.0 ft

Wellbore	COT EAST NA-30-29HN Wellbore #1				
Magnetics	Model Name	Sample Date	Declination (°)	Dip Angle (°)	Field Strength (nT)
	HDGM	11/16/2019	7.95	66.90	52,238

Design	COT EAST NA-30-29HN Wellbore #1				
Audit Notes:					
Version:	1.0	Phase:	ACTUAL	Tie On Depth:	0.0
Vertical Section:	Depth From (TVD) (ft)	+N/-S (ft)	+E/-W (ft)	Direction (°)	
	0.0	0.0	0.0	36.83	

Survey Program	Date	11/21/2019			
From (ft)	To (ft)	Survey (Wellbore)	Tool Name	Description	
215.0	15,273.0	Survey #1 (COT EAST NA-30-29HN Wellb	MWD	MWD - Standard	

Survey										
Measured Depth (ft)	Inclination (°)	Azimuth (°)	Vertical Depth (ft)	+N/-S (ft)	+E/-W (ft)	Vertical Section (ft)	Dogleg Rate (°/100usft)	Build Rate (°/100usft)	Turn Rate (°/100usft)	
0.0	0.00	0.00	0.0	0.0	0.0	0.0	0.00	0.00	0.00	
215.0	1.10	241.00	215.0	-1.0	-1.8	-1.9	0.51	0.51	0.00	
309.0	0.30	332.40	309.0	-1.2	-2.7	-2.6	1.22	-0.85	97.23	
404.0	2.70	48.40	403.9	0.5	-1.1	-0.3	2.78	2.53	80.00	
499.0	4.30	41.90	498.8	4.6	2.9	5.4	1.73	1.68	-6.84	
594.0	5.20	41.20	593.4	10.5	8.1	13.3	0.95	0.95	-0.74	
689.0	6.40	40.10	687.9	17.8	14.4	22.9	1.27	1.26	-1.16	
784.0	7.80	36.80	782.2	27.0	21.6	34.6	1.53	1.47	-3.47	
878.0	7.10	31.50	875.4	37.1	28.5	46.8	1.04	-0.74	-5.64	
973.0	6.10	30.10	969.8	46.4	34.1	57.6	1.07	-1.05	-1.47	

Company:	Bayswater Exploration & Production, LLC	Local Co-ordinate Reference:	Well COT EAST NA-30-29HN
Project:	SEC.30-T7N-R66W	TVD Reference:	WELL @ 4971.0ft (Original Well Elev)
Site:	COT 30J Pad Sec.30-T7N-R66W	MD Reference:	WELL @ 4971.0ft (Original Well Elev)
Well:	COT EAST NA-30-29HN	North Reference:	True
Wellbore:	COT EAST NA-30-29HN Wellbore #1	Survey Calculation Method:	Minimum Curvature
Design:	COT EAST NA-30-29HN Wellbore #1	Database:	US_EDM

Survey										
Measured Depth (ft)	Inclination (°)	Azimuth (°)	Vertical Depth (ft)	+N/-S (ft)	+E/-W (ft)	Vertical Section (ft)	Dogleg Rate (°/100usft)	Build Rate (°/100usft)	Turn Rate (°/100usft)	
1,068.0	4.70	40.80	1,064.4	53.8	39.2	66.5	1.81	-1.47	11.26	
1,163.0	4.90	38.70	1,159.0	59.9	44.2	74.4	0.28	0.21	-2.21	
1,257.0	3.40	40.60	1,252.8	65.1	48.6	81.2	1.60	-1.60	2.02	
1,352.0	3.90	38.50	1,347.6	69.8	52.4	87.3	0.54	0.53	-2.21	
1,447.0	4.20	32.40	1,442.4	75.3	56.3	94.0	0.55	0.32	-6.42	
1,519.0	4.20	42.40	1,514.2	79.4	59.5	99.2	1.02	0.00	13.89	
1,666.0	5.40	61.60	1,660.7	86.7	69.2	110.9	1.35	0.82	13.06	
1,761.0	5.98	69.83	1,755.2	90.5	77.8	119.1	1.05	0.61	8.66	
1,856.0	7.21	73.69	1,849.6	93.9	88.1	128.0	1.38	1.29	4.06	
1,951.0	9.15	84.59	1,943.6	96.3	101.4	137.9	2.61	2.04	11.47	
2,046.0	11.70	87.75	2,037.0	97.4	118.5	149.0	2.75	2.68	3.33	
2,140.0	15.04	86.35	2,128.5	98.5	140.2	162.9	3.57	3.55	-1.49	
2,235.0	14.33	85.82	2,220.4	100.2	164.3	178.6	0.76	-0.75	-0.56	
2,330.0	17.15	87.23	2,311.8	101.7	190.0	195.3	3.00	2.97	1.48	
2,425.0	16.27	86.35	2,402.8	103.2	217.3	212.9	0.96	-0.93	-0.93	
2,520.0	15.65	86.52	2,494.1	104.9	243.3	229.8	0.65	-0.65	0.18	
2,614.0	15.12	87.05	2,584.7	106.3	268.2	245.8	0.58	-0.56	0.56	
2,709.0	14.77	87.23	2,676.5	107.5	292.7	261.5	0.37	-0.37	0.19	
2,803.0	14.33	86.35	2,767.5	108.8	316.3	276.7	0.52	-0.47	-0.94	
2,897.0	13.89	86.35	2,858.7	110.3	339.1	291.5	0.47	-0.47	0.00	
2,992.0	13.45	85.65	2,951.0	111.8	361.5	306.2	0.49	-0.46	-0.74	
3,087.0	12.49	85.82	3,043.6	113.4	382.8	320.2	1.01	-1.01	0.18	
3,182.0	10.02	85.47	3,136.7	114.8	401.3	332.4	2.60	-2.60	-0.37	
3,276.0	9.76	82.48	3,229.3	116.5	417.3	343.4	0.61	-0.28	-3.18	
3,371.0	8.18	82.13	3,323.2	118.5	432.0	353.8	1.66	-1.66	-0.37	
3,466.0	5.98	80.55	3,417.4	120.2	443.6	362.1	2.32	-2.32	-1.66	
3,561.0	4.48	90.92	3,512.0	121.0	452.2	367.9	1.86	-1.58	10.92	
3,655.0	2.11	66.13	3,605.9	121.6	457.4	371.5	2.89	-2.52	-26.37	
3,750.0	1.49	4.96	3,700.8	123.6	459.1	374.1	2.01	-0.65	-64.39	
3,845.0	1.49	13.93	3,795.8	126.0	459.5	376.3	0.25	0.00	9.44	
3,939.0	1.58	11.82	3,889.8	128.4	460.1	378.6	0.11	0.10	-2.24	
4,034.0	1.67	10.59	3,984.7	131.1	460.6	381.0	0.10	0.09	-1.29	
4,128.0	1.76	15.16	4,078.7	133.8	461.3	383.6	0.17	0.10	4.86	
4,223.0	1.93	192.34	4,173.7	133.7	461.3	383.5	3.88	0.18	186.51	
4,318.0	1.76	195.16	4,268.6	130.7	460.6	380.7	0.20	-0.18	2.97	
4,412.0	1.49	197.27	4,362.6	128.1	459.8	378.2	0.29	-0.29	2.24	
4,506.0	1.32	204.47	4,456.6	126.0	459.0	376.0	0.26	-0.18	7.66	
4,601.0	1.23	204.30	4,551.5	124.1	458.2	373.9	0.09	-0.09	-0.18	
4,695.0	1.06	205.18	4,645.5	122.4	457.4	372.1	0.18	-0.18	0.94	
4,790.0	1.32	207.99	4,740.5	120.6	456.5	370.1	0.28	0.27	2.96	
4,884.0	1.67	196.74	4,834.5	118.3	455.6	367.8	0.48	0.37	-11.97	
4,979.0	0.18	256.50	4,929.5	117.0	455.0	366.4	1.67	-1.57	62.91	
5,073.0	0.18	209.22	5,023.5	116.8	454.8	366.1	0.15	0.00	-50.30	
5,168.0	0.18	218.54	5,118.5	116.6	454.7	365.8	0.03	0.00	9.81	

Company:	Bayswater Exploration & Production, LLC	Local Co-ordinate Reference:	Well COT EAST NA-30-29HN
Project:	SEC.30-T7N-R66W	TVD Reference:	WELL @ 4971.0ft (Original Well Elev)
Site:	COT 30J Pad Sec.30-T7N-R66W	MD Reference:	WELL @ 4971.0ft (Original Well Elev)
Well:	COT EAST NA-30-29HN	North Reference:	True
Wellbore:	COT EAST NA-30-29HN Wellbore #1	Survey Calculation Method:	Minimum Curvature
Design:	COT EAST NA-30-29HN Wellbore #1	Database:	US_EDM

Survey										
Measured Depth (ft)	Inclination (°)	Azimuth (°)	Vertical Depth (ft)	+N/-S (ft)	+E/-W (ft)	Vertical Section (ft)	Dogleg Rate (°/100usft)	Build Rate (°/100usft)	Turn Rate (°/100usft)	
5,263.0	0.35	233.48	5,213.5	116.3	454.3	365.4	0.19	0.18	15.73	
5,356.0	0.18	236.47	5,306.5	116.0	454.0	365.0	0.18	-0.18	3.22	
5,451.0	0.26	241.21	5,401.5	115.8	453.7	364.6	0.09	0.08	4.99	
5,545.0	0.09	263.54	5,495.5	115.7	453.4	364.4	0.19	-0.18	23.76	
5,640.0	0.09	317.85	5,590.5	115.8	453.3	364.4	0.09	0.00	57.17	
5,734.0	0.18	7.25	5,684.5	116.0	453.2	364.5	0.15	0.10	52.55	
5,829.0	0.53	328.93	5,779.5	116.5	453.0	364.8	0.43	0.37	-40.34	
5,923.0	0.35	0.22	5,873.4	117.1	452.8	365.2	0.31	-0.19	33.29	
6,040.0	0.18	332.97	5,990.4	117.7	452.7	365.6	0.18	-0.15	-23.29	
6,135.0	0.26	336.49	6,085.4	118.0	452.6	365.7	0.09	0.08	3.71	
6,229.0	0.35	284.45	6,179.4	118.3	452.2	365.7	0.30	0.10	-55.36	
6,324.0	0.44	300.80	6,274.4	118.5	451.6	365.6	0.15	0.09	17.21	
6,418.0	0.44	290.61	6,368.4	118.8	451.0	365.4	0.08	0.00	-10.84	
6,513.0	0.62	277.25	6,463.4	119.0	450.1	365.1	0.23	0.19	-14.06	
6,607.0	0.62	266.70	6,557.4	119.1	449.1	364.5	0.12	0.00	-11.22	
6,702.0	4.75	73.87	6,652.3	120.1	452.4	367.3	5.64	4.35	175.97	
6,796.0	13.98	88.99	6,745.0	121.4	467.5	377.4	10.08	9.82	16.09	
6,891.0	23.04	96.50	6,835.0	119.5	497.5	393.9	9.84	9.54	7.91	
6,985.0	29.99	91.80	6,919.1	116.7	539.3	416.7	7.72	7.39	-5.00	
7,079.0	36.05	89.69	6,997.8	116.1	590.5	446.9	6.56	6.45	-2.24	
7,173.0	43.26	88.28	7,070.2	117.2	650.5	483.7	7.73	7.67	-1.50	
7,268.0	53.46	87.58	7,133.2	119.8	721.3	528.3	10.75	10.74	-0.74	
7,362.0	61.11	87.23	7,184.0	123.4	800.3	578.4	8.14	8.14	-0.37	
7,456.0	68.85	89.51	7,223.7	125.8	885.3	631.3	8.52	8.23	2.43	
7,551.0	81.25	91.62	7,248.2	124.8	976.9	685.5	13.23	13.05	2.22	
7,603.8	86.24	91.03	7,253.9	123.6	1,029.4	715.9	9.51	9.45	-1.12	
Cross DSU Setback 2351'FSL & 2398'FEL, Sec.30										
7,645.0	90.13	90.57	7,255.2	123.0	1,070.5	740.2	9.51	9.45	-1.11	
7,739.0	88.72	87.75	7,256.2	124.4	1,164.5	797.6	3.35	-1.50	-3.00	
7,834.0	88.90	88.11	7,258.1	127.8	1,259.4	857.2	0.42	0.19	0.38	
7,928.0	89.25	88.11	7,259.7	130.9	1,353.4	916.0	0.37	0.37	0.00	
8,022.0	89.78	87.93	7,260.5	134.2	1,447.3	974.9	0.60	0.56	-0.19	
8,117.0	90.48	87.93	7,260.2	137.6	1,542.2	1,034.6	0.74	0.74	0.00	
8,212.0	90.84	88.11	7,259.1	140.9	1,637.2	1,094.1	0.42	0.38	0.19	
8,307.0	90.31	87.40	7,258.2	144.6	1,732.1	1,154.0	0.93	-0.56	-0.75	
8,401.0	89.96	86.52	7,258.0	149.6	1,826.0	1,214.2	1.01	-0.37	-0.94	
8,496.0	90.22	88.81	7,257.8	153.5	1,920.9	1,274.2	2.43	0.27	2.41	
8,590.0	89.25	88.63	7,258.3	155.6	2,014.9	1,332.2	1.05	-1.03	-0.19	
8,685.0	91.19	88.99	7,257.9	157.5	2,109.8	1,390.7	2.08	2.04	0.38	
8,779.0	89.52	88.46	7,257.3	159.6	2,203.8	1,448.7	1.86	-1.78	-0.56	
8,874.0	89.78	89.16	7,257.9	161.6	2,298.8	1,507.2	0.79	0.27	0.74	
8,968.0	90.57	89.34	7,257.6	162.8	2,392.8	1,564.6	0.86	0.84	0.19	
9,063.0	89.16	87.93	7,257.8	165.1	2,487.7	1,623.3	2.10	-1.48	-1.48	

Company:	Bayswater Exploration & Production, LLC	Local Co-ordinate Reference:	Well COT EAST NA-30-29HN
Project:	SEC.30-T7N-R66W	TVD Reference:	WELL @ 4971.0ft (Original Well Elev)
Site:	COT 30J Pad Sec.30-T7N-R66W	MD Reference:	WELL @ 4971.0ft (Original Well Elev)
Well:	COT EAST NA-30-29HN	North Reference:	True
Wellbore:	COT EAST NA-30-29HN Wellbore #1	Survey Calculation Method:	Minimum Curvature
Design:	COT EAST NA-30-29HN Wellbore #1	Database:	US_EDM

Survey										
Measured Depth (ft)	Inclination (°)	Azimuth (°)	Vertical Depth (ft)	+N/-S (ft)	+E/-W (ft)	Vertical Section (ft)	Dogleg Rate (°/100usft)	Build Rate (°/100usft)	Turn Rate (°/100usft)	
9,157.0	89.78	87.40	7,258.7	168.9	2,581.7	1,682.7	0.87	0.66	-0.56	
9,251.0	89.52	87.93	7,259.3	172.8	2,675.6	1,742.0	0.63	-0.28	0.56	
9,346.0	90.13	87.75	7,259.6	176.3	2,770.5	1,801.8	0.67	0.64	-0.19	
9,441.0	89.16	88.63	7,260.2	179.3	2,865.5	1,861.1	1.38	-1.02	0.93	
9,535.0	89.16	88.28	7,261.5	181.9	2,959.4	1,919.5	0.37	0.00	-0.37	
9,630.0	89.52	87.93	7,262.6	185.0	3,054.4	1,978.9	0.53	0.38	-0.37	
9,724.0	89.78	87.58	7,263.2	188.7	3,148.3	2,038.1	0.46	0.28	-0.37	
9,819.0	90.13	89.51	7,263.3	191.1	3,243.2	2,097.0	2.06	0.37	2.03	
9,913.0	90.92	89.34	7,262.4	192.1	3,337.2	2,154.1	0.86	0.84	-0.18	
10,008.0	89.16	87.75	7,262.3	194.5	3,432.2	2,212.9	2.50	-1.85	-1.67	
10,103.0	89.52	87.58	7,263.4	198.3	3,527.1	2,272.9	0.42	0.38	-0.18	
10,198.0	89.16	88.63	7,264.5	201.5	3,622.1	2,332.3	1.17	-0.38	1.11	
10,293.0	89.87	88.11	7,265.3	204.2	3,717.0	2,391.4	0.93	0.75	-0.55	
10,387.0	89.60	90.04	7,265.8	205.7	3,811.0	2,449.0	2.07	-0.29	2.05	
10,481.0	90.57	89.69	7,265.6	205.9	3,905.0	2,505.5	1.10	1.03	-0.37	
10,575.0	91.54	89.51	7,263.9	206.6	3,999.0	2,562.3	1.05	1.03	-0.19	
10,670.0	90.40	89.69	7,262.3	207.2	4,094.0	2,619.8	1.21	-1.20	0.19	
10,765.0	89.43	90.74	7,262.4	206.9	4,189.0	2,676.4	1.50	-1.02	1.11	
10,859.0	90.31	90.57	7,262.6	205.8	4,282.9	2,731.9	0.95	0.94	-0.18	
10,954.0	91.36	88.11	7,261.3	206.9	4,377.9	2,789.7	2.82	1.11	-2.59	
11,048.0	88.81	87.40	7,261.1	210.6	4,471.8	2,849.0	2.82	-2.71	-0.76	
11,143.0	89.78	87.40	7,262.3	214.9	4,566.7	2,909.3	1.02	1.02	0.00	
11,238.0	90.84	87.58	7,261.8	219.1	4,661.6	2,969.5	1.13	1.12	0.19	
11,333.0	89.16	87.05	7,261.8	223.5	4,756.5	3,030.0	1.85	-1.77	-0.56	
11,427.0	89.43	89.16	7,262.9	226.6	4,850.5	3,088.8	2.26	0.29	2.24	
11,522.0	90.57	89.16	7,262.9	228.0	4,945.5	3,146.8	1.20	1.20	0.00	
11,617.0	91.28	89.34	7,261.4	229.2	5,040.4	3,204.7	0.77	0.75	0.19	
11,711.0	92.24	89.16	7,258.5	230.5	5,134.4	3,262.0	1.04	1.02	-0.19	
11,806.0	93.47	89.67	7,253.8	231.4	5,229.3	3,319.7	1.40	1.29	0.54	
11,900.0	91.62	88.46	7,249.6	233.0	5,323.1	3,377.2	2.35	-1.97	-1.29	
11,995.0	90.31	88.81	7,248.0	235.2	5,418.1	3,435.9	1.43	-1.38	0.37	
12,090.0	91.80	88.99	7,246.3	237.1	5,513.1	3,494.3	1.58	1.57	0.19	
12,184.0	89.96	87.58	7,244.8	239.9	5,607.0	3,552.8	2.47	-1.96	-1.50	
12,279.0	91.01	87.40	7,244.0	244.0	5,701.9	3,613.1	1.12	1.11	-0.19	
12,374.0	92.59	87.58	7,241.0	248.2	5,796.8	3,673.2	1.67	1.66	0.19	
12,468.0	91.01	88.28	7,238.1	251.6	5,890.7	3,732.2	1.84	-1.68	0.74	
12,563.0	90.40	89.86	7,236.9	253.1	5,985.6	3,790.4	1.78	-0.64	1.66	
12,658.0	90.75	89.16	7,236.0	253.9	6,080.6	3,848.0	0.82	0.37	-0.74	
12,752.0	91.63	89.34	7,234.0	255.2	6,174.6	3,905.3	0.96	0.94	0.19	
12,846.0	92.86	89.16	7,230.3	256.4	6,268.5	3,962.6	1.32	1.31	-0.19	
12,941.0	91.36	89.51	7,226.8	257.5	6,363.4	4,020.4	1.62	-1.58	0.37	
13,036.0	90.31	89.86	7,225.4	258.0	6,458.4	4,077.7	1.17	-1.11	0.37	
13,130.0	90.92	89.69	7,224.4	258.4	6,552.4	4,134.3	0.67	0.65	-0.18	
13,225.0	92.42	89.86	7,221.7	258.8	6,647.4	4,191.6	1.59	1.58	0.18	

Company:	Bayswater Exploration & Production, LLC	Local Co-ordinate Reference:	Well COT EAST NA-30-29HN
Project:	SEC.30-T7N-R66W	TVD Reference:	WELL @ 4971.0ft (Original Well Elev)
Site:	COT 30J Pad Sec.30-T7N-R66W	MD Reference:	WELL @ 4971.0ft (Original Well Elev)
Well:	COT EAST NA-30-29HN	North Reference:	True
Wellbore:	COT EAST NA-30-29HN Wellbore #1	Survey Calculation Method:	Minimum Curvature
Design:	COT EAST NA-30-29HN Wellbore #1	Database:	US_EDM

Measured Depth (ft)	Inclination (°)	Azimuth (°)	Vertical Depth (ft)	+N/-S (ft)	+E/-W (ft)	Vertical Section (ft)	Dogleg Rate (°/100usft)	Build Rate (°/100usft)	Turn Rate (°/100usft)
13,320.0	92.68	89.51	7,217.4	259.3	6,742.3	4,248.9	0.46	0.27	-0.37
13,414.0	90.48	90.04	7,214.8	259.7	6,836.2	4,305.5	2.41	-2.34	0.56
13,509.0	88.11	88.99	7,216.0	260.5	6,931.2	4,363.0	2.73	-2.49	-1.11
13,604.0	88.29	88.28	7,219.0	262.7	7,026.1	4,421.8	0.77	0.19	-0.75
13,698.0	88.90	88.11	7,221.3	265.7	7,120.1	4,480.4	0.67	0.65	-0.18
13,793.0	88.81	89.16	7,223.2	268.0	7,215.0	4,539.1	1.11	-0.09	1.11
13,888.0	90.13	89.51	7,224.1	269.1	7,310.0	4,597.0	1.44	1.39	0.37
13,982.0	91.10	89.69	7,223.1	269.7	7,404.0	4,653.8	1.05	1.03	0.19
14,077.0	91.98	90.04	7,220.5	269.9	7,499.0	4,710.9	1.00	0.93	0.37
14,172.0	90.75	89.51	7,218.3	270.3	7,593.9	4,768.2	1.41	-1.29	-0.56
14,267.0	91.71	89.34	7,216.2	271.3	7,688.9	4,825.8	1.03	1.01	-0.18
14,361.0	90.40	88.99	7,214.5	272.6	7,782.9	4,883.3	1.44	-1.39	-0.37
14,456.0	91.45	89.16	7,212.9	274.2	7,877.9	4,941.4	1.12	1.11	0.18
14,551.0	89.43	88.46	7,212.2	276.1	7,972.8	4,999.9	2.25	-2.13	-0.74
14,645.0	90.31	88.63	7,212.4	278.5	8,066.8	5,058.2	0.95	0.94	0.18
14,740.0	91.36	88.81	7,211.0	280.6	8,161.8	5,116.8	1.12	1.11	0.19
14,835.0	89.08	89.51	7,210.7	282.0	8,256.7	5,174.8	2.51	-2.40	0.74
14,929.0	89.69	89.16	7,211.7	283.1	8,350.7	5,232.0	0.75	0.65	-0.37
15,024.0	91.80	90.74	7,210.5	283.2	8,445.7	5,289.0	2.77	2.22	1.66
15,119.0	90.22	88.81	7,208.8	283.6	8,540.7	5,346.3	2.63	-1.66	-2.03
15,215.0	89.87	88.63	7,208.7	285.7	8,636.7	5,405.5	0.41	-0.36	-0.19
15,273.0	89.87	88.63	7,208.8	287.1	8,694.6	5,441.4	0.00	0.00	0.00

Target Name	Dip Angle (°)	Dip Dir. (°)	TVD (ft)	+N/-S (ft)	+E/-W (ft)	Northing (usft)	Easting (usft)	Latitude	Longitude
SHL 2242'FSL & 2004'F ¹ - hit/miss target - Shape - Point	0.00	0.00	1.0	0.0	0.0	1,441,808.75	3,187,646.98	40.544204	-104.824805
BHL 2394'FSL & 150'FE - survey misses target center by 6.9ft at 15273.0ft MD (7208.8 TVD, 287.1 N, 8694.6 E) - Point	0.00	0.00	7,206.0	293.4	8,695.7	1,442,168.29	3,196,339.89	40.545005	-104.793517

Measured Depth (ft)	Vertical Depth (ft)	Local Coordinates		Comment
		+N/-S (ft)	+E/-W (ft)	
7,603.8	7,253.9	123.6	1,029.4	Cross DSU Setback 2351'FSL & 2398'FEL, Sec.30

Checked By: _____ Approved By: _____ Date: _____