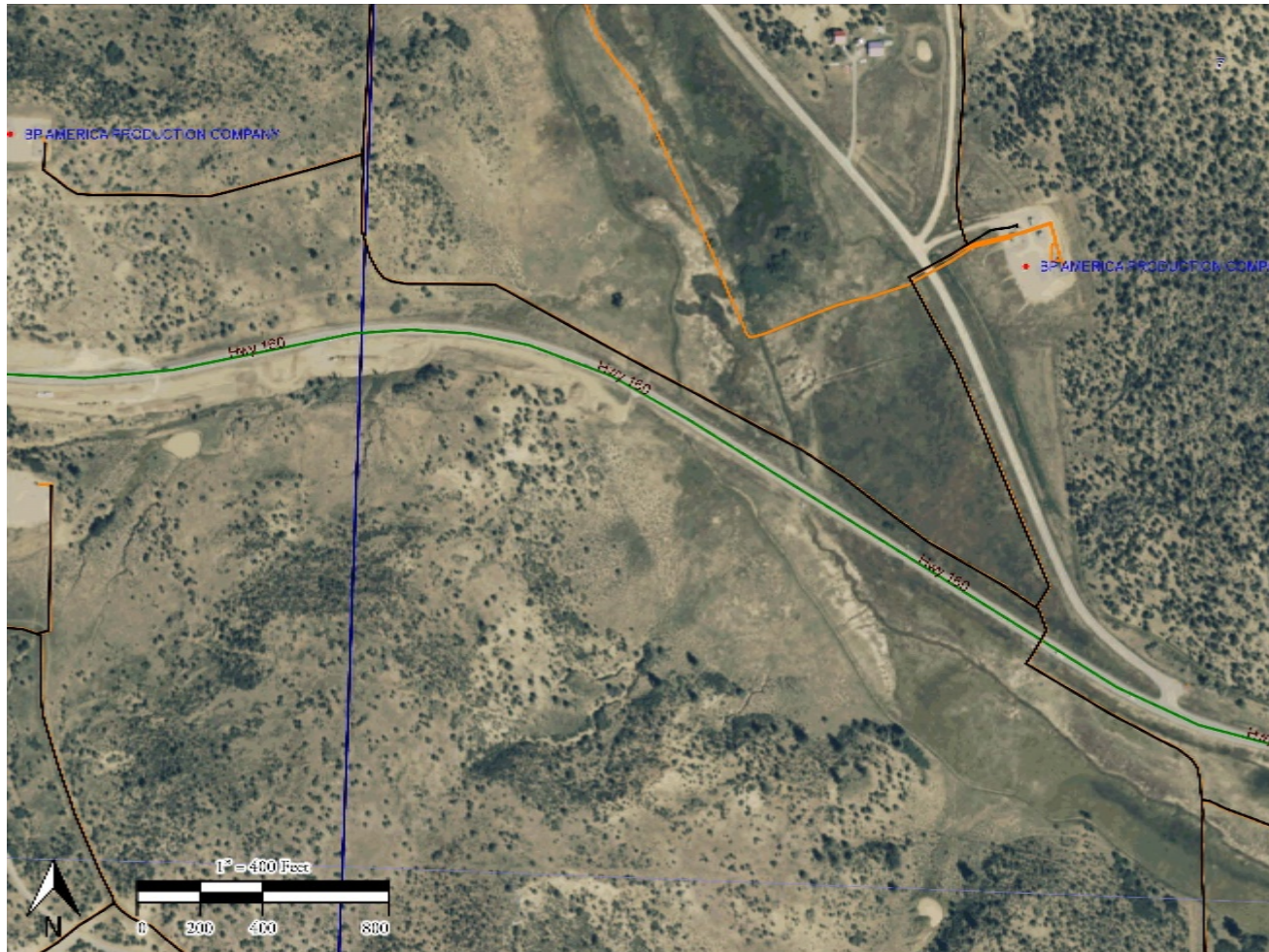


Inspection Photos

Operator Name: BP America Production Company

Location: 476429

Project name: Dry Creek Pipeline Realignment and Abandonment Project



10" and 6" flowlines run parallel to highway 160 in CDOT right-of-way, flowlines were plugged and abandoned in place, New flowlines were installed on south side of 160 out of right-of-way, CDOT future plan is to make highway 160 4 lanes in this area

Inspection Photos

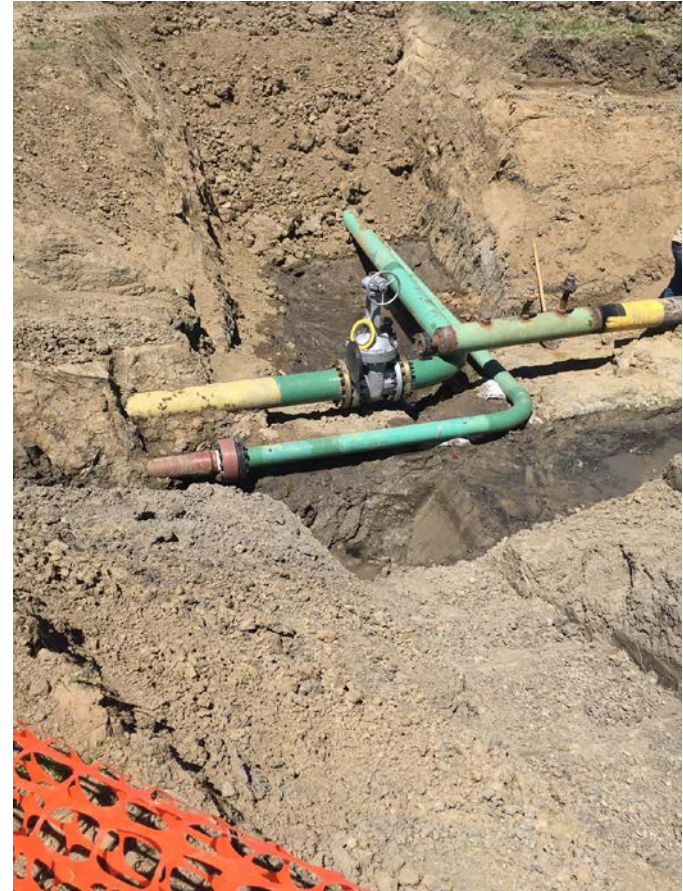
Operator Name: BP America Production Company

Location: 476429

Project name: Dry Creek Pipeline Realignment and Abandonment Project



New realignment on NW side of project, 6" carbon steel tying into 6" fiberglass with 10" gas line



New realignment on SW side of project, 6" carbon steel tying into 6" fiberglass with 10" gas line

Inspection Photos

Operator Name: BP America Production Company

Location: 476429

Project name: Dry Creek Pipeline Realignment and Abandonment Project



6" and 10" ready for purging and pigging



6" fiberglass being purged, 12 pigs were sent through

Inspection Photos

Operator Name: BP America Production Company

Location: 476429

Project name: Dry Creek Pipeline Realignment and Abandonment Project



**6" fiberglass dry packed with cement, foam plug
was set 2' inside flowline**



6" fiberglass final cap installed

Inspection Photos

Operator Name: BP America Production Company

Location: 476429

Project name: Dry Creek Pipeline Realignment and Abandonment Project



**10" Carbon steel flowline dry packed with cement,
foam plug was set 2' inside flowline**



10" fiberglass final cap installed

Inspection Photos
Operator Name: BP America Production Company
Location: 476429
Project name: Dry Creek Pipeline Realignment and Abandonment Project



Some 6" Fiberglass flowline that was able to be removed