



Well Services

RADIAL CEMENT BOND  
GAMMA RAY  
CCL LOG

Company SRC ENERGY INC.		Company SRC ENERGY INC.					
Well SAMUEL J 7-16		Well SAMUEL J 7-16					
Field WATTENBERG		Field WATTENBERG					
County WELD		County WELD					
State CO		State CO					
Location: API # : 05-123-25606 NW/SE LAT. 40.41196 LONG. -104.81832		Other Services					
SEC 7 TWP 5N RGE 66W		Elevation					
Permanent Datum GL Log Measured From K.B. OF 16' Drilling Measured From KELLY BUSHING		K.B. 4.826' D.F. 4.825' G.L. 4.810'					
Date	7-2-2019						
Run Number	ONE						
Depth Driller	8.180'						
Depth Logger	3.004'						
Bottom Logged Interval	3.000'						
Top Log Interval	SURFACE						
Open Hole Size	7 7/8"						
Type Fluid	WATER						
Density / Viscosity	1.0						
Max. Recorded Temp.	112.1 DEG. F.						
Estimated Cement Top	NA						
Time Well Ready	ON ARRIVAL						
Time Logger on Bottom	N/A						
Equipment Number	3813						
Location	GREELEY, CO						
Recorded By	J.KERR						
Witnessed By	R. POOLE						
Borehole Record		Tubing Record					
Run Number	Bit	From	To	Size	Weight	From	To
Casing Record	Size		Wgt/Ft		Top		Bottom
Surface String	8.625"		24#		SURFACE		561'
Prot. String							
Production String	4.5"		11.6#		SURFACE		8.168'
Liner							

<<< Fold Here >>>

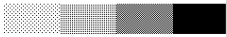

All interpretations are opinions based on inferences from electrical or other measurements and we cannot and do not guarantee the accuracy or correctness of any interpretation, and we shall not, except in the case of gross or willful negligence on our part, be liable or responsible for any loss, costs, damages, or expenses incurred or sustained by anyone resulting from any interpretation made by any of our officers, agents or employees. These interpretations are also subject to our general terms and conditions set out in our current Price Schedule.

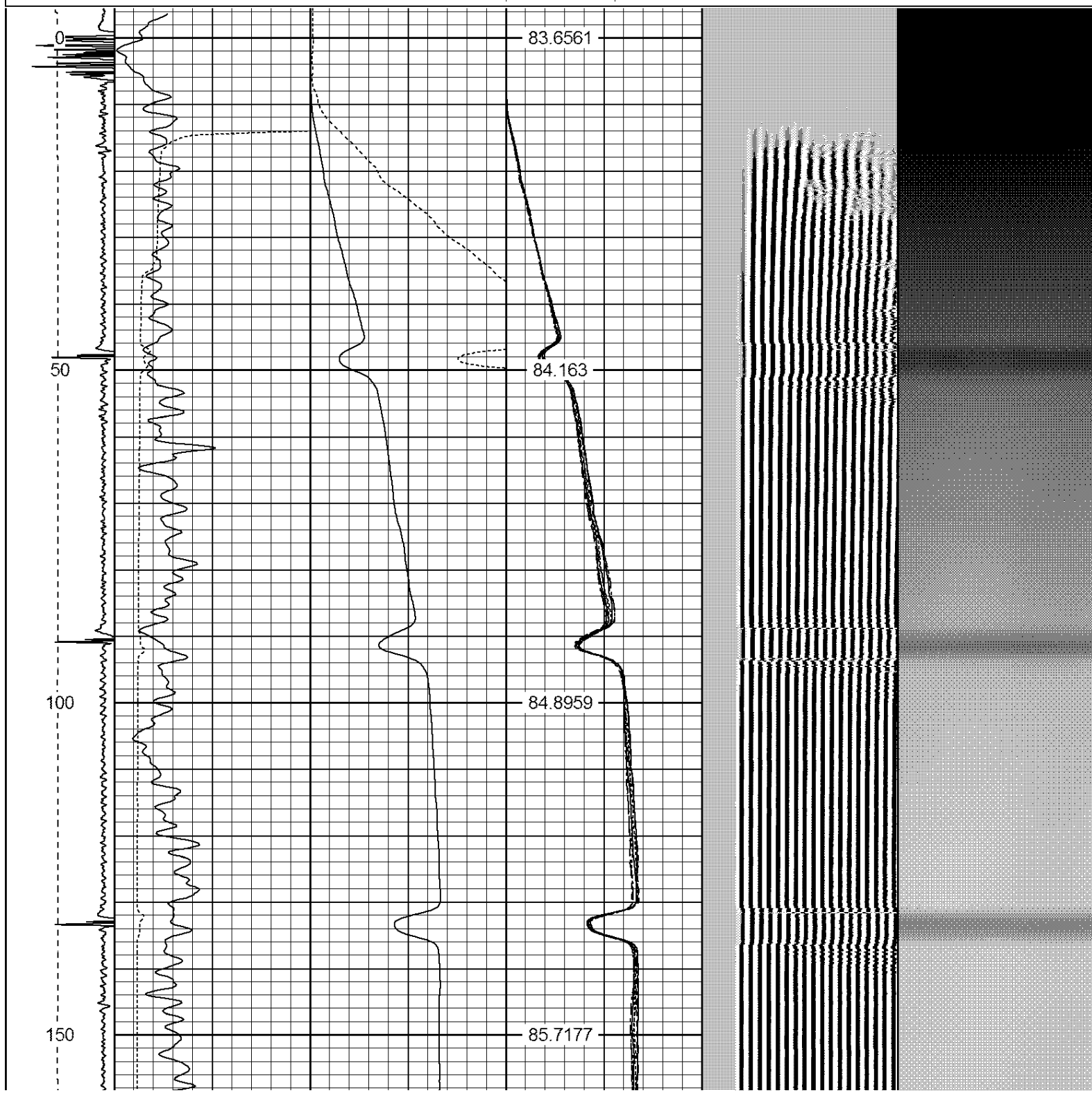
Comments

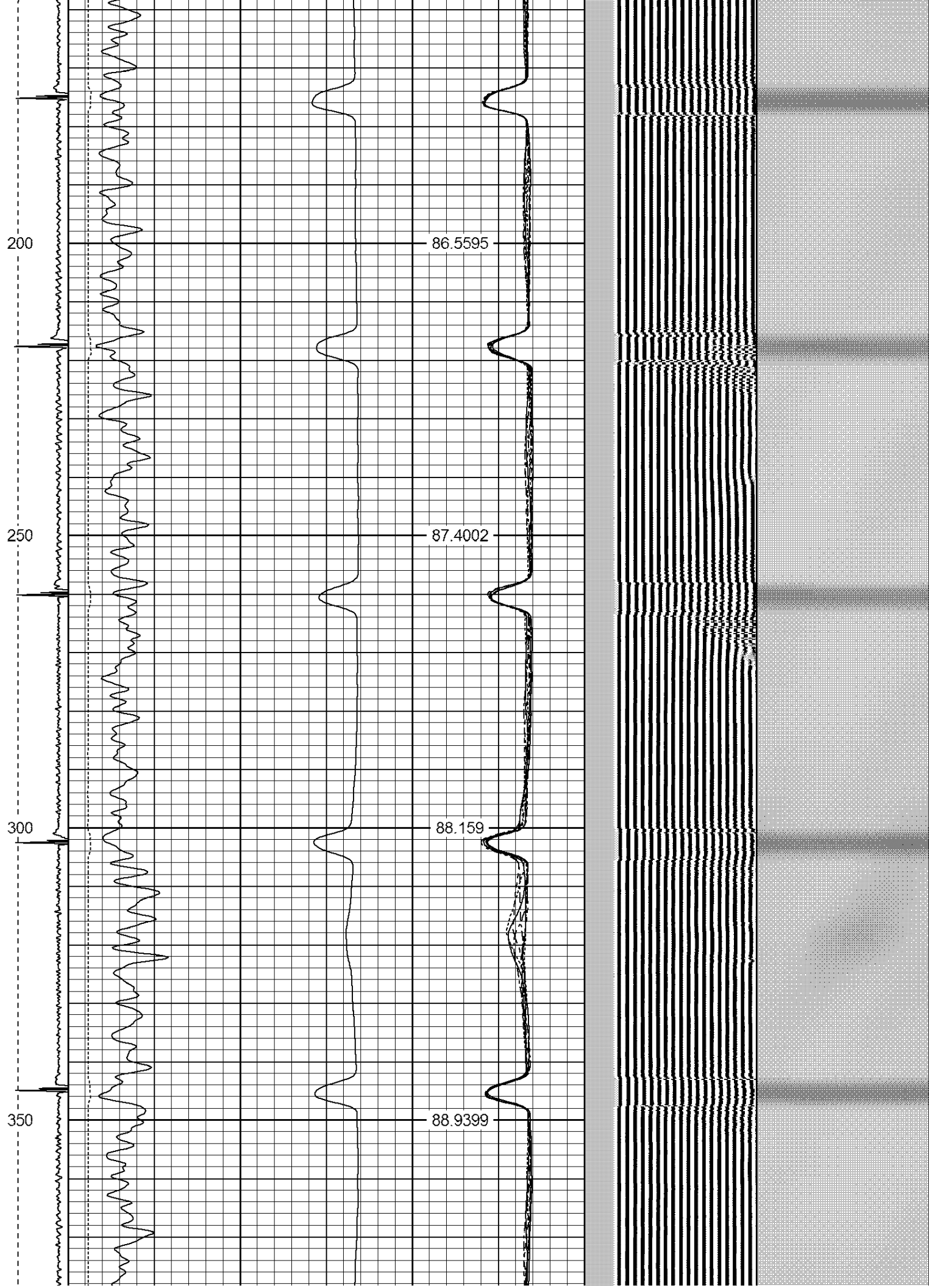
RAN CBL TO VERIFY CEMENT COVERAGE  
CORRELATED TO K.B. OF 16'

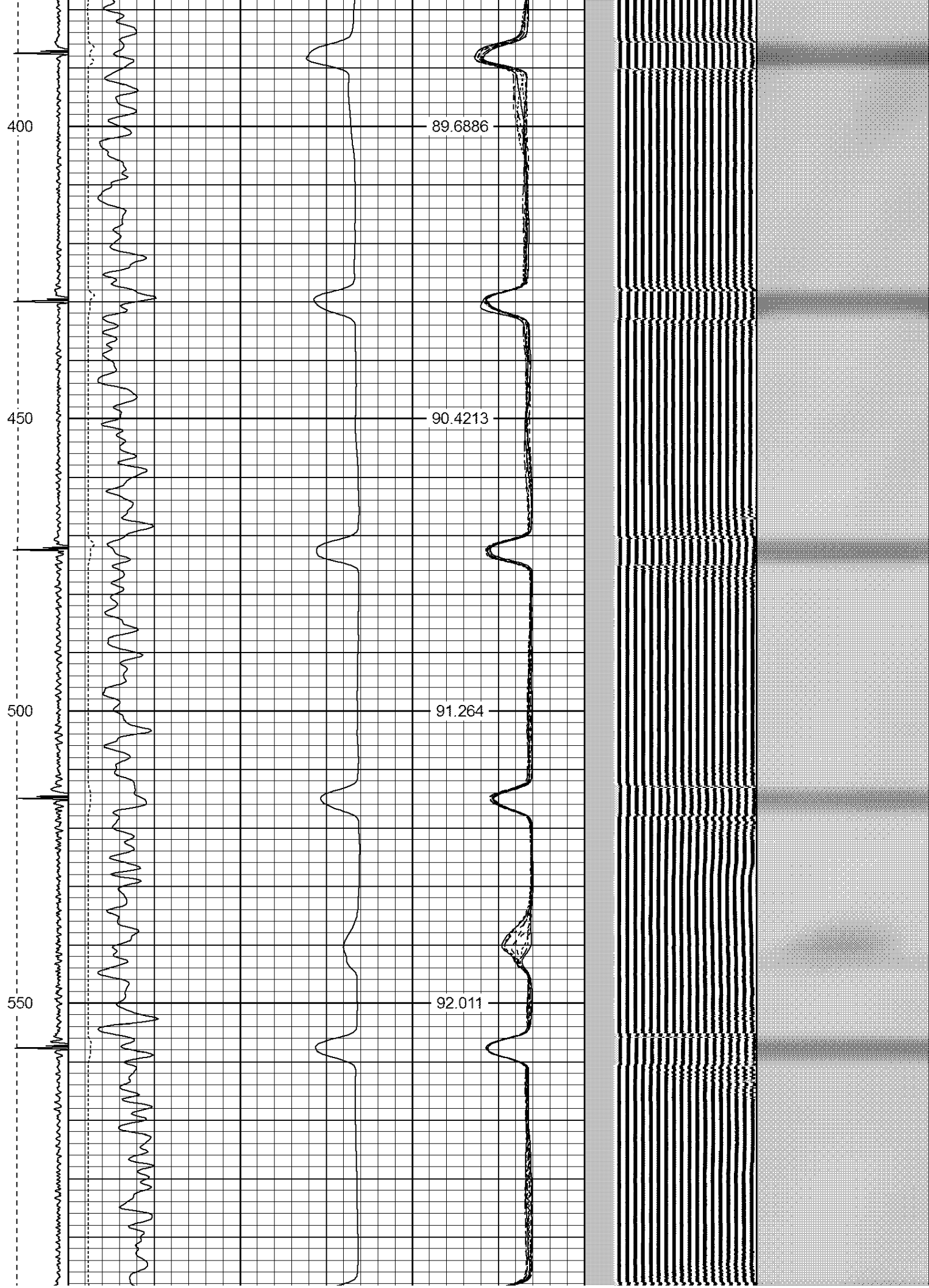
Sensor	Offset (ft)	Schematic	Description	Len (ft)	OD (in)	Wt (lb)
HEAD/CL	16.13		1_4	1.00	1.36	5.00

HEADVOLT	10.15					
IntTemp	14.71					
WVF3FT	11.46		RBT-Probe (Base) Probe Radlii Bond Tool with Digital Telemetry	8.92	2.75	90.00
WVFCAL	11.46					
WVFS1	11.46					
WVFS2	11.46					
WVFS3	11.46					
WVFS4	11.46					
WVFS5	11.46					
WVFS6	11.46					
WVFS7	11.46					
WVFS8	11.46					
WVF5FT	10.46					
CNLSC	6.00		CNT-Probe_B (275) 6 bow centralizer	2.88	2.75	40.00
CNSSC	5.17					
CCL	3.64					
GR	0.90		GR-Probe (275) Probe 2.75"	4.33	2.75	30.00
Dataset: samuel j 7-16.db: field/well/run1/pass2 Total Length: 17.13 ft Total Weight: 165.00 lb O.D. 2.75 in						

-9	CCL	1	200	TT (usec)	800	0	AMP (mV)	100	0	AMPS1	100	200	VDL	1200	1	Cement Map	8									
LSPD (ft/min)	0		0	GR (GAPI)	200	0	AMPx5 (mV)	20	0	AMPS2	100			100												
	200		200	GR (GAPI)	400				0	AMPS3	100															
0		250							0	AMPS4	100															
									0	AMPS5	100															
									0	AMPS6	100															
									0	AMPS7	100															
									0	AMPS8	100															
									IntTemp																	
									(degF)																	

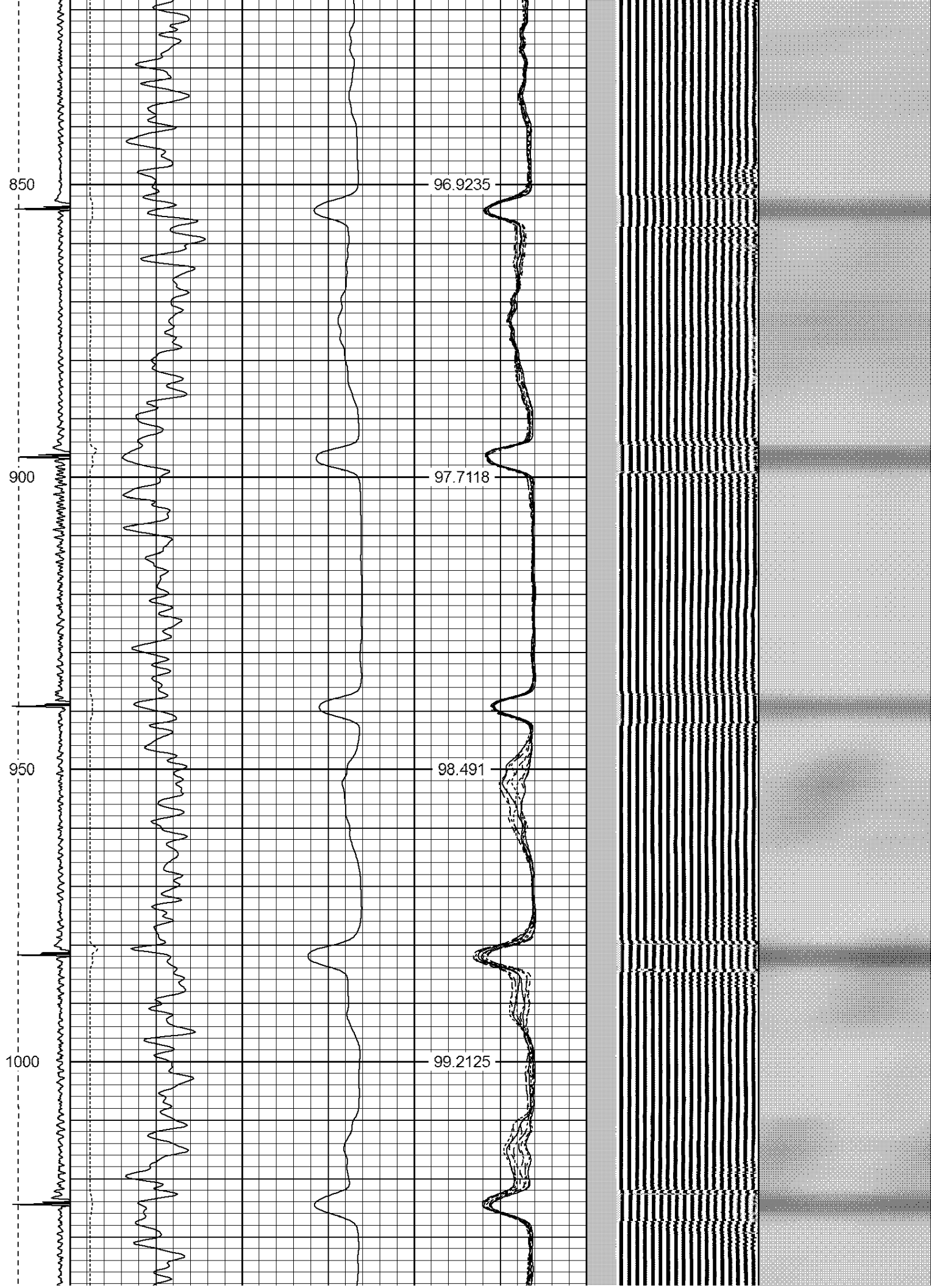


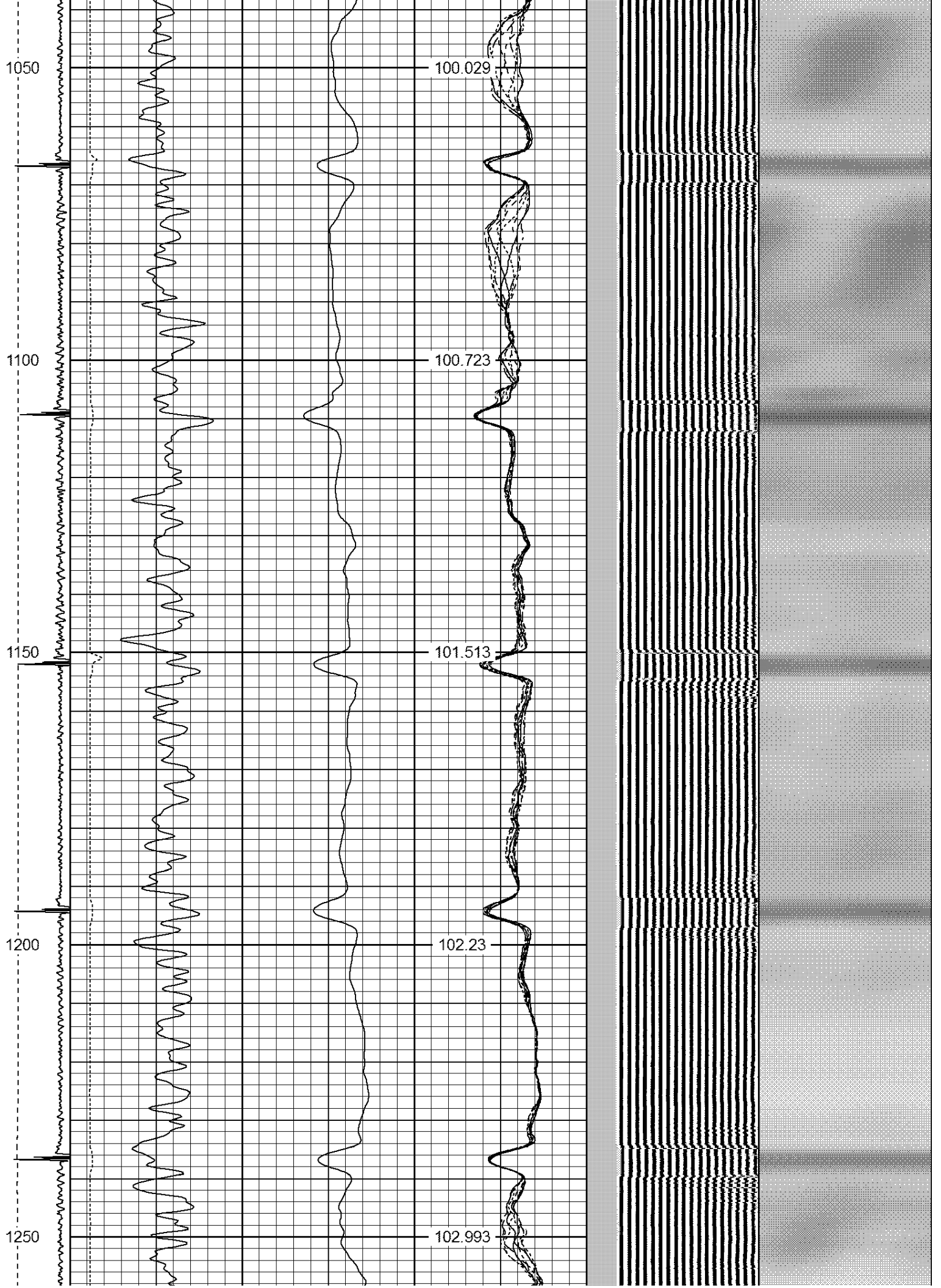




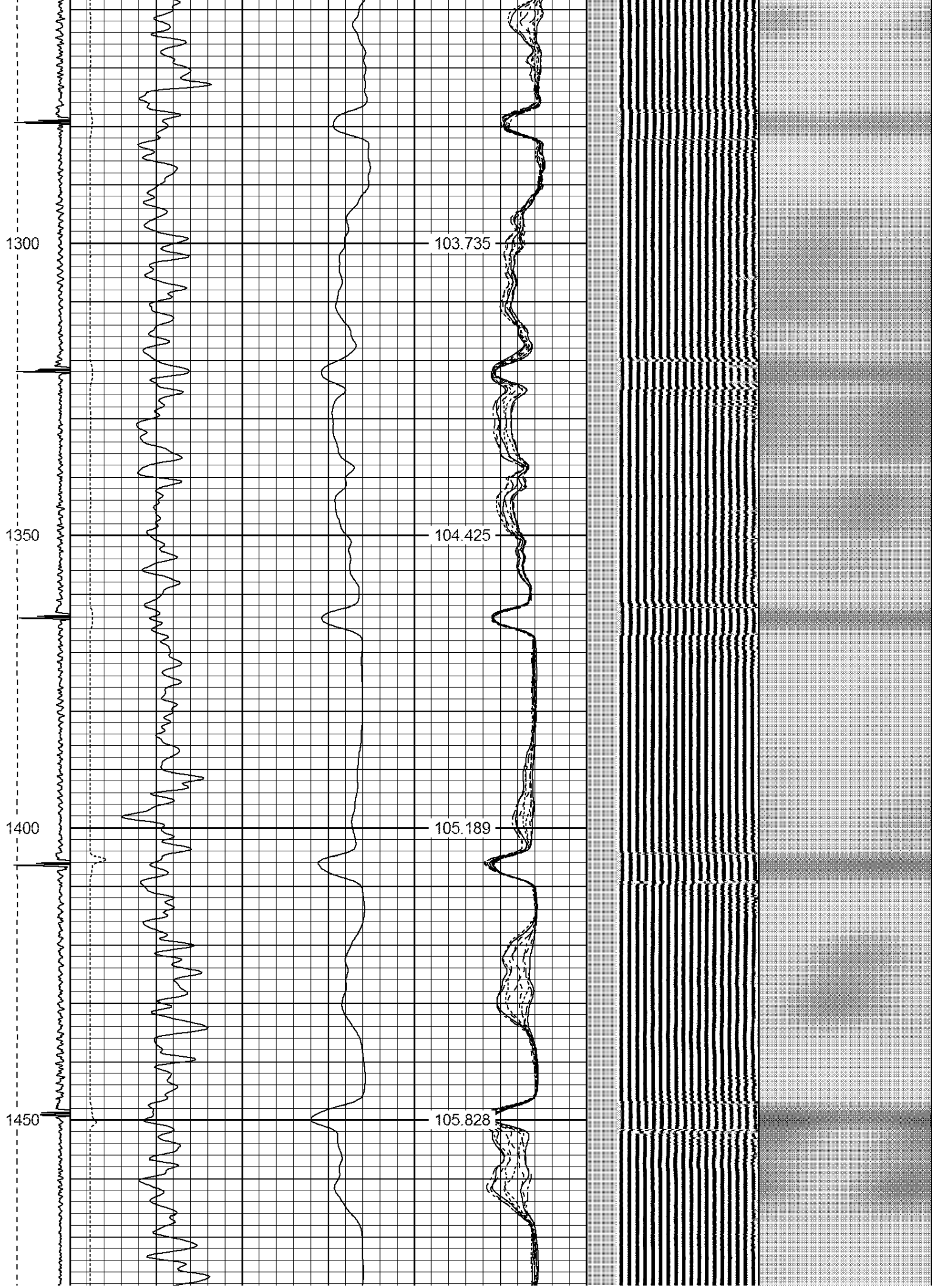


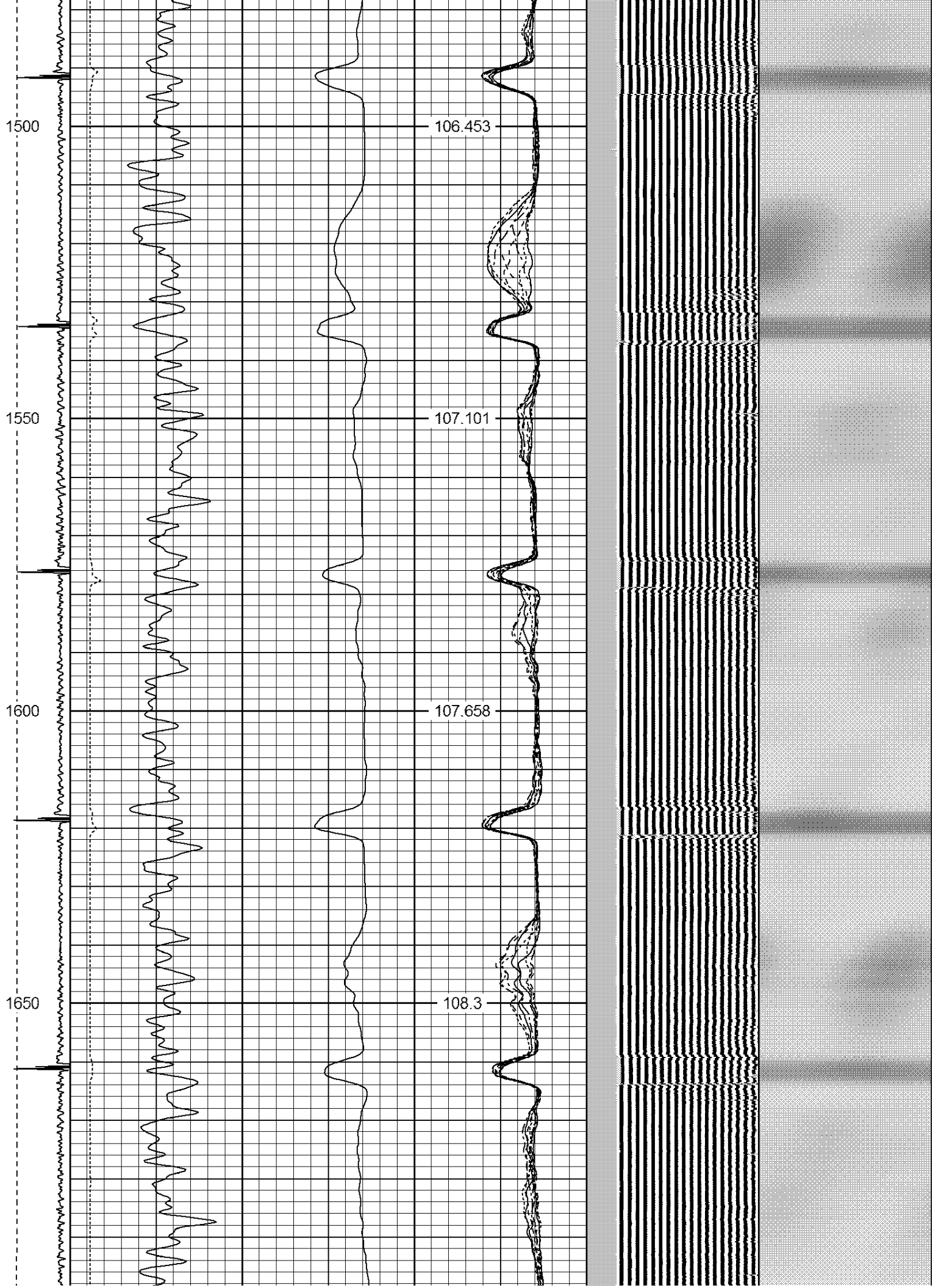


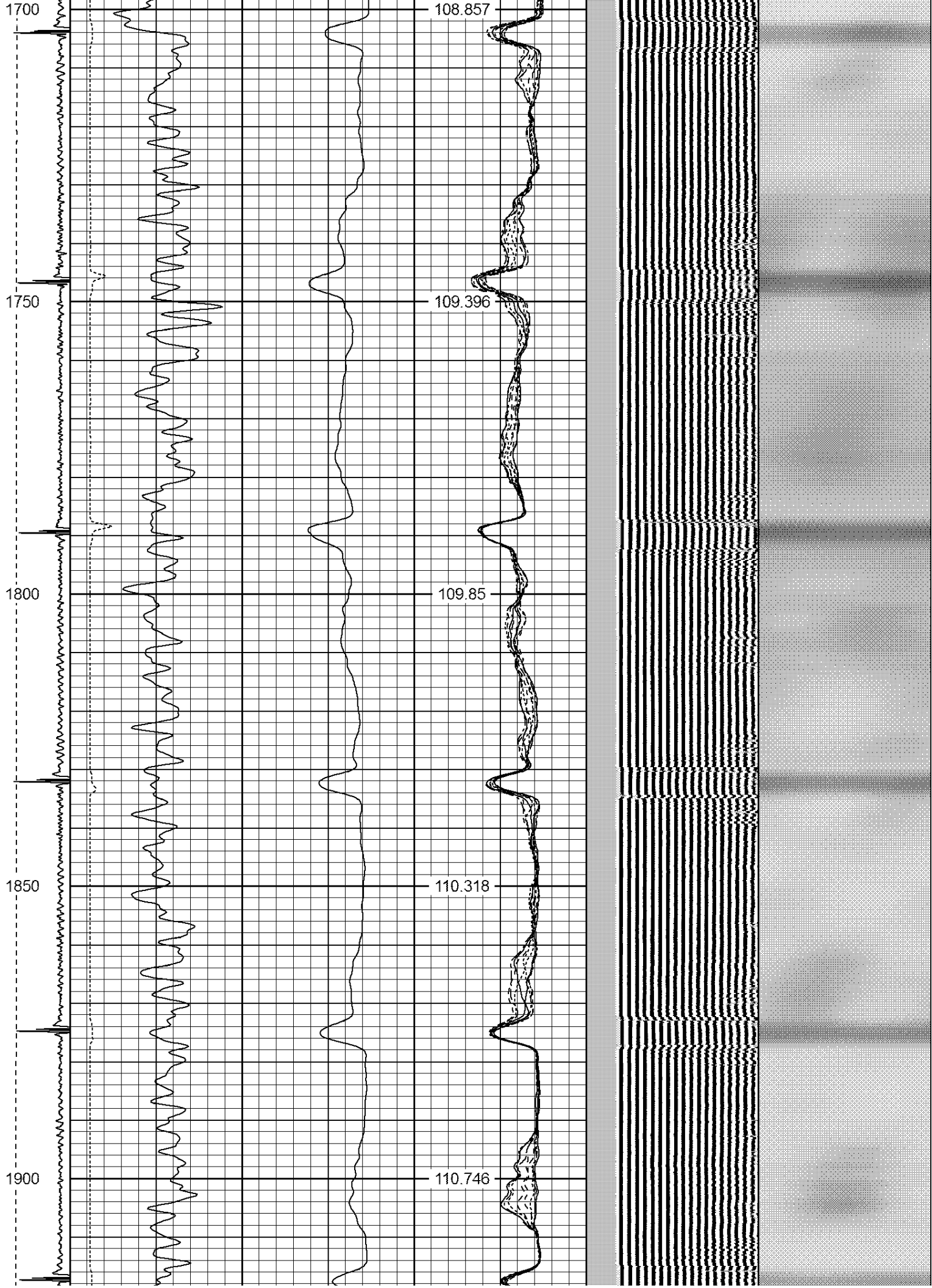












1950

2000

2050

2100

111.038

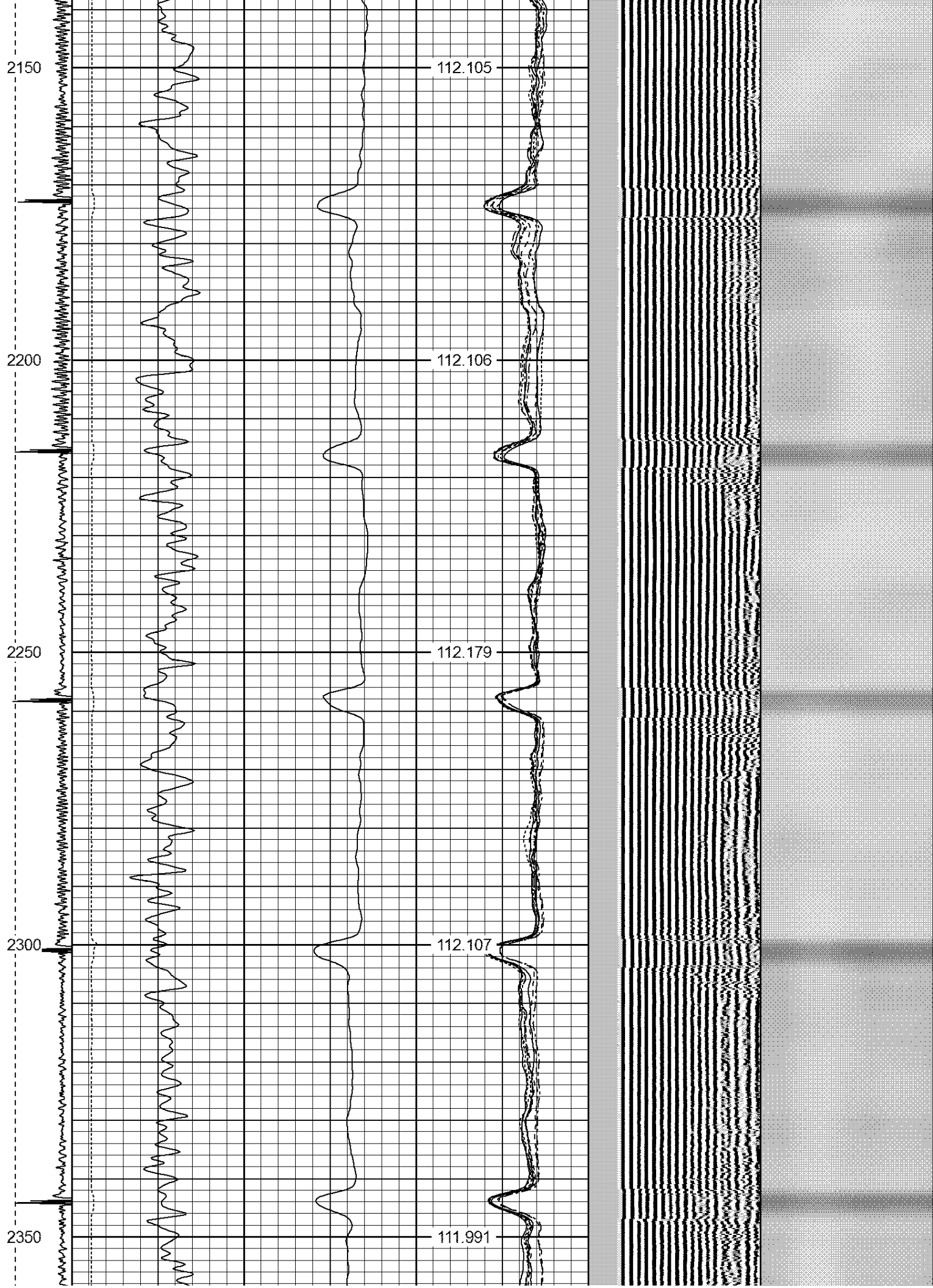
111.444

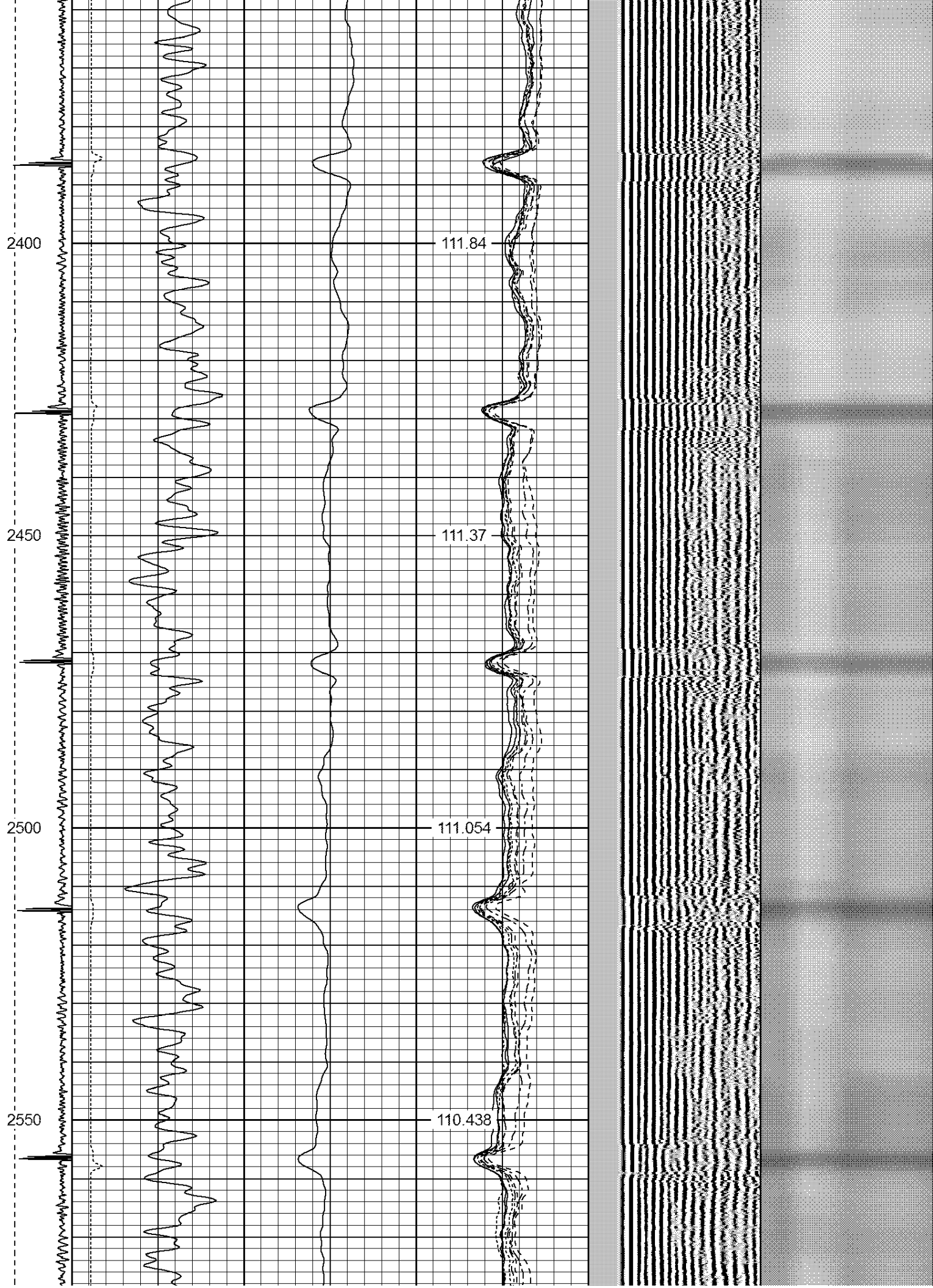
111.69

111.946



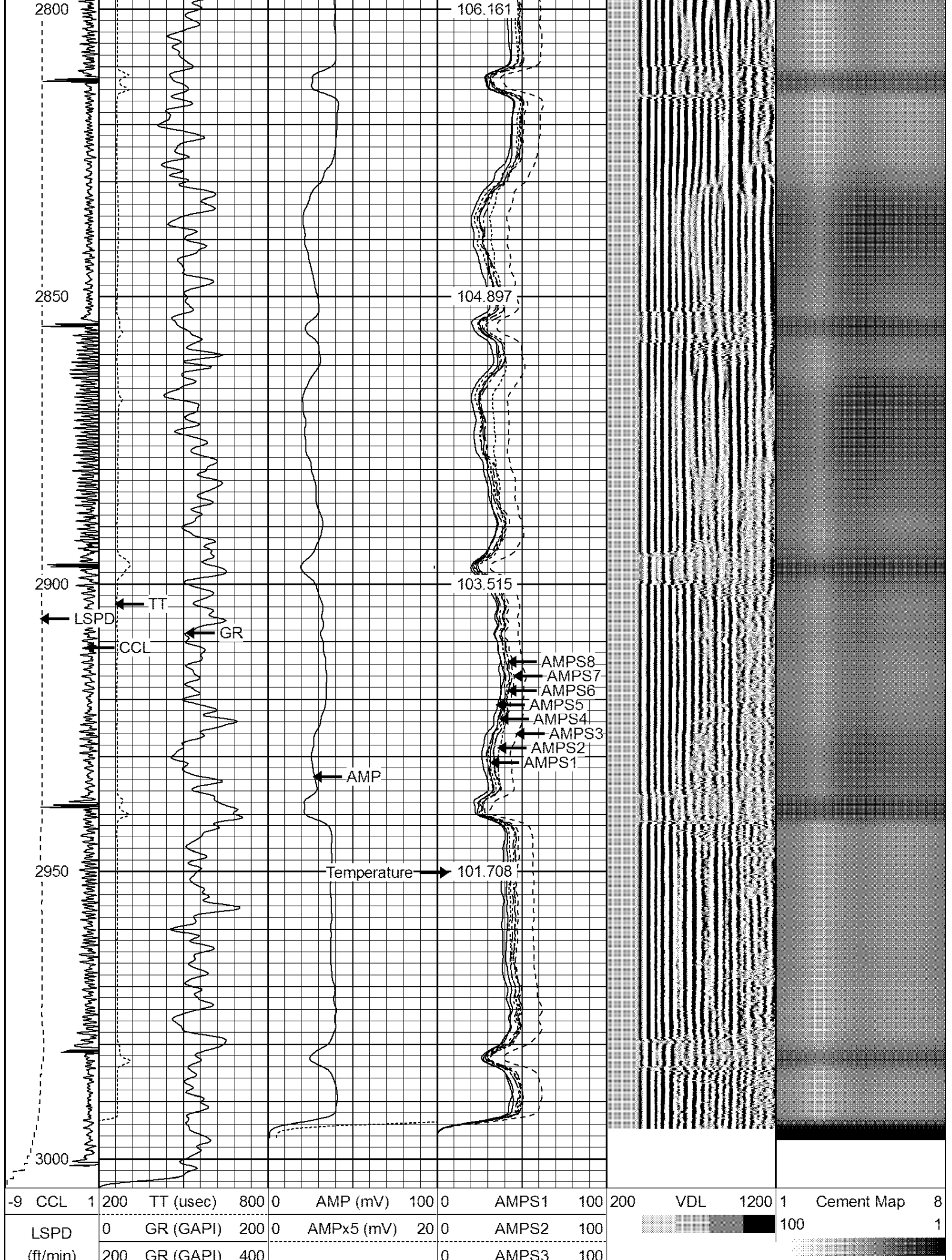












-9	CCL	1	200	TT (usec)	800	0	AMP (mV)	100	0	AMPS1	100	200	VDL	1200	1	Cement Map	8
LSPD	0	GR (GAPI)	200	0	AMPx5 (mV)	20	0	AMPS2	100						100		1
(ft/min)	200	GR (GAPI)	400					AMPS3	100								

0	250		0	AMPS4	100
			0	AMPS5	100
			0	AMPS6	100
			0	AMPS7	100
			0	AMPS8	100
			IntTemp		
			(degF)		

Calibration Report						
Database File:		samuel j 7-16.db				
Dataset Pathname:		pass2				
Dataset Creation:		Tue Jul 02 08:11:35 2019 by Log SCH 120126				
Gamma Ray Calibration Report						
Serial Number:		275				
Tool Model:		Probe				
Performed:		Tue Sep 23 07:13:12 2014				
Calibrator Value:		100.0		GAPI		
Background Reading:		35.0		cps		
Calibrator Reading:		160.0		cps		
Sensitivity:		1.0000		GAPI/cps		
Compensated Neutron Calibration Report						
Serial Number:		275				
Tool Model:		Probe_B				
CALIBRATION		Wed Jul 30 08:47:19 2008				
Detector		Readings		Target		Normalization
Short Space		5001.20	cps	0.00	cps	1.0000
Long Space		1029.31	cps	0.00	cps	1.0000
PRE-SURVEY VERIFICATION						
Detector		Readings		Measured		Target
1)	Short Space	cps		pu		pu
	Long Space	cps				
2)	Short Space	cps		pu		
	Long Space	cps				
3)	Short Space	cps		pu		
	Long Space	cps				
POST-SURVEY VERIFICATION						
Detector		Readings		Measured		Target
1)	Short Space	cps		pu		pu
	Long Space	cps				
2)	Short Space	cps		pu		pu
	Long Space	cps				
3)	Short Space	cps		pu		pu
	Long Space	cps				

Serial Number: Base  
Tool Model: Probe

Calibration Casing Diameter: 4.500 in  
Calibration Depth: 171.365 ft

Master Calibration, performed Tue Jul 02 07:56:14 2019:

	Raw (v)		Calibrated (mv)		Results	
	Zero	Cal	Zero	Cal	Gain	Offset
3'	0.000	1.513	1.000	81.196	53.010	1.000
CAL	0.000	1.514				
5'	0.000	1.602	1.000	81.196	50.061	1.000
SUM						
S1	0.000	1.510	0.500	81.196	53.439	0.500
S2	0.000	1.476	0.500	81.196	54.661	0.500
S3	0.000	1.464	0.500	81.196	55.112	0.500
S4	0.000	1.482	0.500	81.196	54.445	0.500
S5	0.000	1.491	0.500	81.196	54.121	0.500
S6	0.000	1.519	0.500	81.196	53.128	0.500
S7	0.000	1.527	0.500	81.196	52.843	0.500
S8	0.000	1.531	0.500	81.196	52.715	0.500

Internal Reference Calibration, performed Tue Jun 05 07:53:42 2012:

	Raw (v)		Calibrated (v)		Results	
	Zero	Cal	Zero	Cal	Gain	Offset
CAL	0.000	0.000	0.000	1.514	1.000	0.000

Air Zero Calibration, performed Tue Jul 02 07:55:07 2019:

	Raw (v)	Calibrated (v)	Results
	Zero	Zero	Offset
3'	0.000	0.000	0.000
5'	0.000	0.000	0.000
SUM			
S1	0.000	0.000	0.000
S2	0.000	0.000	0.000
S3	0.000	0.000	0.000
S4	0.000	0.000	0.000
S5	0.000	0.000	0.000
S6	0.000	0.000	0.000
S7	0.000	0.000	0.000
S8	0.000	0.000	0.000



**Well Services**  
E - L I N E

Company SRC ENERGY INC.

Well SAMUEL J 7-16

Field WATTENBERG

County WELD

State CO