



Crestone Peak Resources

Schlumberger

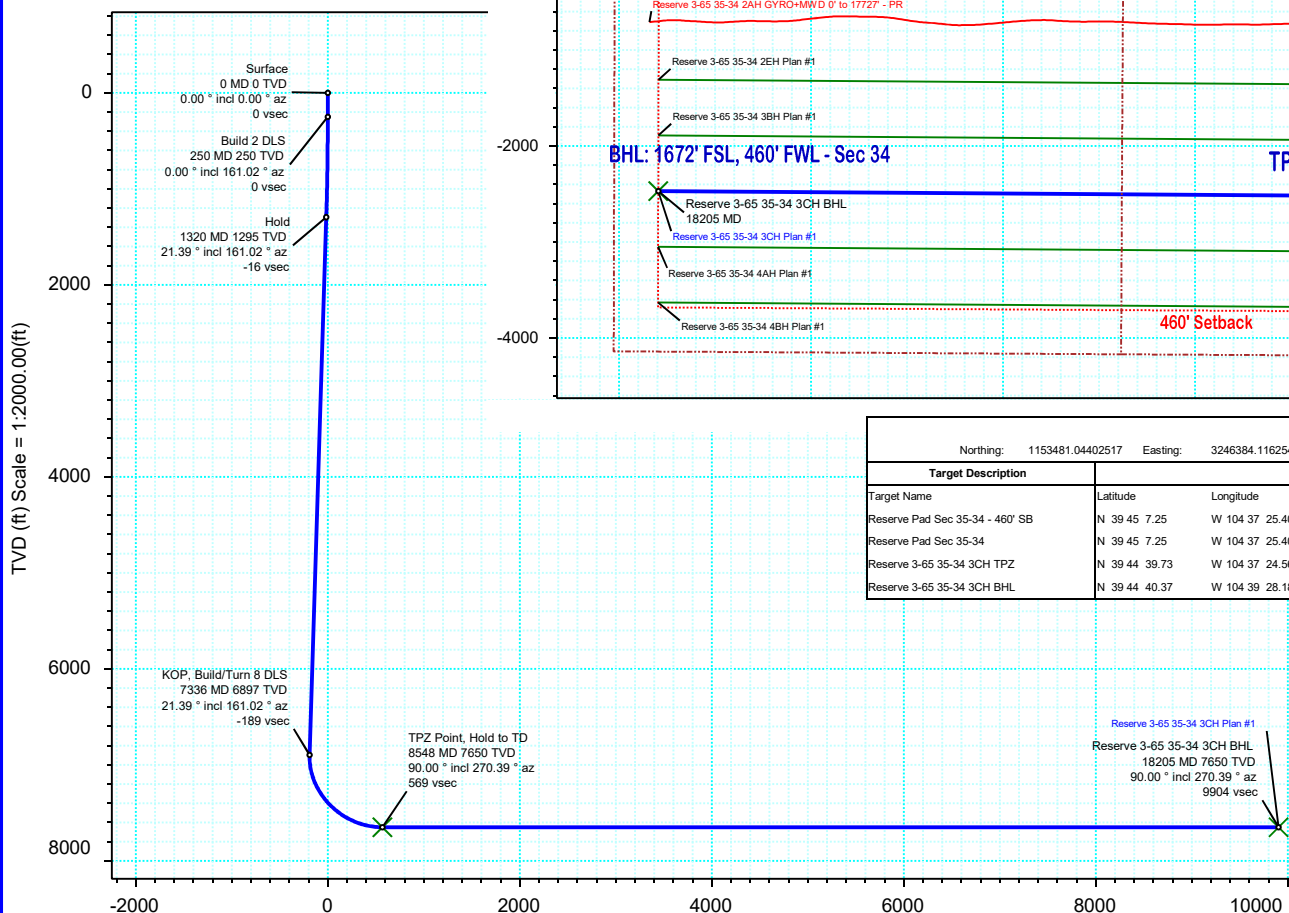
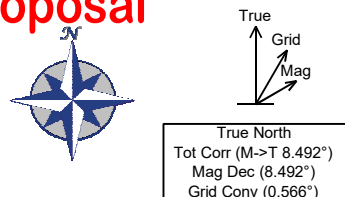
Plan 1

Borehole:	Well:	Field:	Structure:
Original Hole	Reserve 3-65 35-34 3CH	CO, Adams County (NAD 83 NZ)	Crestone Peak 35-03S-65W (Reserve Pad)

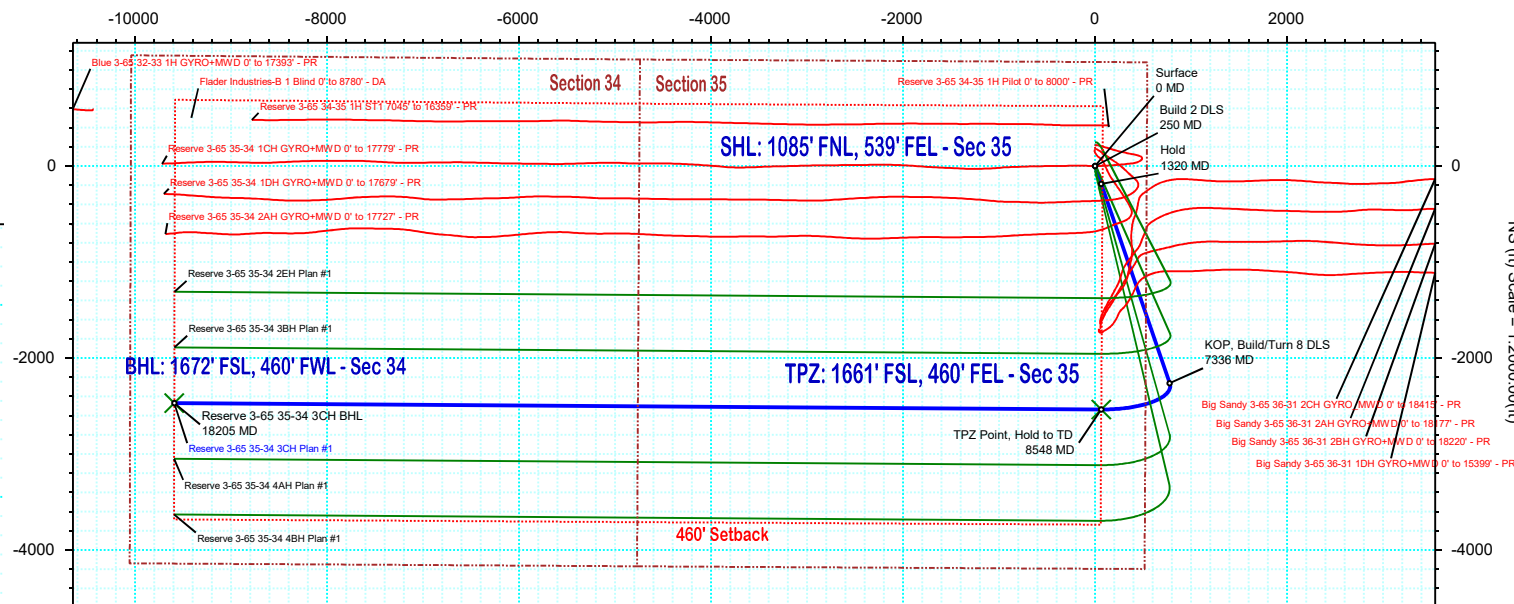
Gravity & Magnetic Parameters					Surface Location					NAD83 Colorado State Plane, Northern Zone, US Feet					Miscellaneous			
Model:	HDGM 2020	Dip:	66.335°	Date:	14-May-2020	Lat:	N 39 45 4.79	Northing:	1153481.04ftUS	Grid Conv:	0.5662°	Slot:	Reserve 3-65 35-34 3CH	TVD Ref:	KB 28ft(5541.9ft above MSL)			
MagDec:	8.492°	FS:	51582.746nT	Gravity FS:	998.932mgn (9.80665 Based)	Lon:	W 104 37 25.39	Easting:	3246384.12ftUS	Scale Fact:	0.99999459	Plan:	Reserve 3-65 35-34 3CH Plan #1					

Proposal

EW (ft) Scale = 1:2000.00(ft)



Vertical Section (ft) Azim = 255.56° Scale = 1:2000.00(ft) Origin = 0N/-S, 0E/-W



Target Description		Surface Location							
		Latitude	Longitude	Northings	Easting	TVD	VSec	N(+)/S(-)	E(+)/W(-)
Reserve Pad Sec 35-34 - 460' SB		N 39 45 7.25	W 104 37 25.40	1153729.82	3246381.38	5541.90	-61.76	248.80	-0.28
Reserve Pad Sec 35-34		N 39 45 7.25	W 104 37 25.40	1153729.82	3246381.38	5541.90	-61.76	248.80	-0.28
Reserve 3-65 35-34 3CH TPZ		N 39 44 39.73	W 104 37 24.56	1150946.50	3246474.41	7650.00	568.97	-2535.33	65.24
Reserve 3-65 35-34 3CH BHL		N 39 44 40.37	W 104 39 28.18	1150917.04	3236818.00	7650.00	9903.85	-2469.37	-9591.06

Critical Points								
Critical Point	MD	INCL	AZIM	TVD	VSEC	N(+)/S(-)	E(+)/W(-)	DLS
Surface	0.00	0.00	0.00	0.00	0.00	0.00	0.00	0.00
Build 2 DLS	250.00	0.00	161.02	250.00	0.00	0.00	0.00	0.00
Hold	1319.64	21.39	161.02	1294.96	-15.64	-186.65	64.20	2.00
KOP, Build/Turn 8 DLS	7336.13	21.39	161.02	6896.92	-189.52	-2261.88	778.06	0.00
TPZ Point, Hold to TD	8548.01	90.00	270.39	7650.00	568.97	-2535.33	65.24	8.00
Reserve 3-65 35-34 3CH BHL	18204.53	90.00	270.39	7650.00	9903.85	-2469.37	-9591.06	0.00

Reserve 3-65 35-34 3CH Plan #1 Proposal Geodetic Report

(Def Plan)

Report Date: May 14, 2020 - 03:12 PM
Client: Crestone Peak Resources
Field: CO, Adams County (NAD 83 NZ)
Structure / Slot: Crestone Peak 35-03S-65W (Reserve Pad) / Reserve 3-65 35-34 3CH
Well: Reserve 3-65 35-34 3CH
Borehole: Original Hole
UWI / API#: Unknown / Unknown
Survey Name: Reserve 3-65 35-34 3CH Plan #1
Survey Date: March 09, 2020
Tort / AHD / DDI / ERD Ratio: 118.343 ° / 12881.895 ft / 6.560 / 1.684
Coordinate Reference System: NAD83 Colorado State Plane, Northern Zone, US Feet
Location Lat / Long: N 39° 45' 4.78800", W 104° 37' 25.39200"
Location Grid N/E Y/X: N 1153481.044 ftUS, E 3246384.116 ftUS
CRS Grid Convergence Angle: 0.5662 °
Grid Scale Factor: 0.99999459
Version / Patch: 2.10.787.0

Survey / DLS Computation: Minimum Curvature / Lubinski
Vertical Section Azimuth: 255.562 ° (True North)
Vertical Section Origin: 0.000 ft, 0.000 ft
TVD Reference Datum: KB 28ft
TVD Reference Elevation: 5541.900 ft above MSL
Seabed / Ground Elevation: 5513.900 ft above MSL
Magnetic Declination: 8.492 °
Total Gravity Field Strength: 998.9315mgn (9.80665 Based)
Gravity Model: GARM
Total Magnetic Field Strength: 51582.746 nT
Magnetic Dip Angle: 66.335 °
Declination Date: May 14, 2020
Magnetic Declination Model: HDGM 2020
North Reference: True North
Grid Convergence Used: 0.0000 °
Total Corr Mag North→True North: 8.4918 °
Local Coord Referenced To: Well Head

Comments	MD (ft)	Incl (°)	Azim True (°)	TVD (ft)	VSEC (ft)	NS (ft)	EW (ft)	DLS (°/100ft)	Northing (ftUS)	Easting (ftUS)	Latitude (°)	Longitude (°)
Surface	0.00	0.00	0.00	0.00	0.00	0.00	0.00	N/A	1153481.04	3246384.12	39.751330	-104.623720
Build 2 DLS	100.00	0.00	161.02	100.00	0.00	0.00	0.00	0.00	1153481.04	3246384.12	39.751330	-104.623720
	200.00	0.00	161.02	200.00	0.00	0.00	0.00	0.00	1153481.04	3246384.12	39.751330	-104.623720
	250.00	0.00	161.02	250.00	0.00	0.00	0.00	0.00	1153481.04	3246384.12	39.751330	-104.623720
	300.00	1.00	161.02	300.00	-0.03	-0.41	0.14	2.00	1153480.63	3246384.26	39.751329	-104.623719
	400.00	3.00	161.02	399.93	-0.31	-3.71	1.28	2.00	1153477.34	3246385.43	39.751320	-104.623715
	500.00	5.00	161.02	499.68	-0.86	-10.31	3.55	2.00	1153470.77	3246387.76	39.751302	-104.623707
	600.00	7.00	161.02	599.13	-1.69	-20.19	6.95	2.00	1153460.92	3246391.26	39.751275	-104.623695
	700.00	9.00	161.02	698.15	-2.79	-33.35	11.47	2.00	1153447.81	3246395.92	39.751238	-104.623679
	800.00	11.00	161.02	796.63	-4.17	-49.77	17.12	2.00	1153431.44	3246401.73	39.751193	-104.623659
	900.00	13.00	161.02	894.44	-5.82	-69.43	23.88	2.00	1153411.85	3246408.68	39.751139	-104.623635
	1000.00	15.00	161.02	991.46	-7.73	-92.31	31.75	2.00	1153389.06	3246416.78	39.751077	-104.623607
	1100.00	17.00	161.02	1087.58	-9.92	-118.37	40.72	2.00	1153363.08	3246426.00	39.751005	-104.623575
	1200.00	19.00	161.02	1182.68	-12.37	-147.59	50.77	2.00	1153333.96	3246436.34	39.750925	-104.623539
	1300.00	21.00	161.02	1276.65	-15.08	-179.93	61.89	2.00	1153301.74	3246447.78	39.750836	-104.623500
Hold	1319.64	21.39	161.02	1294.96	-15.64	-186.65	64.20	2.00	1153295.04	3246450.16	39.750818	-104.623492
	1400.00	21.39	161.02	1369.78	-17.96	-214.36	73.74	0.00	1153267.42	3246459.97	39.750742	-104.623458
	1500.00	21.39	161.02	1462.89	-20.85	-248.86	85.60	0.00	1153233.05	3246472.17	39.750647	-104.623416
	1600.00	21.39	161.02	1556.00	-23.74	-283.35	97.47	0.00	1153198.68	3246484.38	39.750552	-104.623373
	1700.00	21.39	161.02	1649.11	-26.63	-317.84	109.33	0.00	1153164.30	3246496.58	39.750457	-104.623331
	1800.00	21.39	161.02	1742.22	-29.52	-352.33	121.20	0.00	1153129.93	3246508.79	39.750363	-104.623289
	1900.00	21.39	161.02	1835.33	-32.41	-386.83	133.06	0.00	1153095.56	3246520.99	39.750268	-104.623247
	2000.00	21.39	161.02	1928.44	-35.30	-421.32	144.93	0.00	1153061.18	3246533.20	39.750173	-104.623205
	2100.00	21.39	161.02	2021.55	-38.19	-455.81	156.79	0.00	1153026.81	3246545.40	39.750079	-104.623162
	2200.00	21.39	161.02	2114.66	-41.08	-490.30	168.66	0.00	1152992.44	3246557.61	39.749984	-104.623120
	2300.00	21.39	161.02	2207.77	-43.97	-524.79	180.52	0.00	1152958.06	3246569.82	39.749889	-104.623078
	2400.00	21.39	161.02	2300.88	-46.86	-559.29	192.39	0.00	1152923.69	3246582.02	39.749795	-104.623036
	2500.00	21.39	161.02	2393.99	-49.75	-593.78	204.25	0.00	1152889.32	3246594.23	39.749700	-104.622994
	2600.00	21.39	161.02	2487.10	-52.64	-628.27	216.12	0.00	1152854.94	3246606.43	39.749605	-104.622951
	2700.00	21.39	161.02	2580.21	-55.53	-662.76	227.98	0.00	1152820.57	3246618.64	39.749511	-104.622909
	2800.00	21.39	161.02	2673.33	-58.42	-697.26	239.85	0.00	1152786.20	3246630.84	39.749416	-104.622867
	2900.00	21.39	161.02	2766.44	-61.31	-731.75	251.71	0.00	1152751.82	3246643.05	39.749321	-104.622825
	3000.00	21.39	161.02	2859.55	-64.20	-766.24	263.58	0.00	1152717.45	3246655.25	39.749227	-104.622783
	3100.00	21.39	161.02	2952.66	-67.09	-800.73	275.44	0.00	1152683.08	3246667.46	39.749132	-104.622740
	3200.00	21.39	161.02	3045.77	-69.98	-835.23	287.31	0.00	1152648.70	3246679.67	39.749037	-104.622698
	3300.00	21.39	161.02	3138.88	-72.87	-869.72	299.17	0.00	1152614.33	3246691.87	39.748942	-104.622656
	3400.00	21.39	161.02	3231.99	-75.76	-904.21	311.04	0.00	1152579.96	3246704.07	39.748848	-104.622614
	3500.00	21.39	161.02	3325.10	-78.65	-938.70	322.90	0.00	1152545.58	3246716.28	39.748753	-104.622572
	3600.00	21.39	161.02	3418.21	-81.54	-973.20	334.77	0.00	1152511.21	3246728.48	39.748658	-104.622530
	3700.00	21.39	161.02	3511.32	-84.43	-1007.69	346.63	0.00	1152476.84	3246740.69	39.748564	-104.622487
	3800.00	21.39	161.02	3604.43	-87.32	-1042.18	358.50	0.00	1152442.46	3246752.89	39.748469	-104.622445
	3900.00	21.39	161.02	3697.54	-90.21	-1076.67	370.36	0.00	1152408.09	3246765.10	39.748374	-104.622403
	4000.00	21.39	161.02	3790.65	-93.10	-1111.17	382.23	0.00	1152373.72	3246777.30	39.748280	-104.622361
	4100.00	21.39	161.02	3883.76	-95.99	-1145.66	394.09	0.00	1152339.35	3246789.51	39.748185	-104.622318
	4200.00	21.39	161.02	3976.87	-98.88	-1180.15	405.96	0.00	1152304.97	3246801.71	39.748090	-104.622276
	4300.00	21.39	161.02	4069.98	-101.77	-1214.64	417.82	0.00	1152270.60	3246813.92	39.747996	-104.622234
	4400.00	21.39	161.02	4163.09	-104.66	-1249.13	429.69	0.00	1152236.23	3246826.12	39.747901	-104.622192
	4500.00	21.39	161.02	4256.20	-107.55	-1283.63	441.55	0.00	1152201.85	3246838.33	39.747806	-104.622150
	4600.00	21.39	161.02	4349.31	-110.44	-1318.12	453.42	0.00	1152167.48	3246850.53	39.747711	-104.622108
	4700.00	21.39	161.02	4442.42	-113.33	-1352.61	465.28	0.00	1152133.11	3246862.74	39.747617	-104.622065
	4800.00	21.39	161.02	4535.53	-116.23	-1387.10	477.15	0.00	1152098.73	3246874.94	39.747522	-104.622023
	4900.00	21.39	161.02	4628.64	-119.12	-1421.60	489.01	0.00	1152064.36	3246887.15	39.747427	-104.621981
	5000.00	21.39	161.02	4721.75	-122.01	-1456.09	500.88	0.00	1152029.99	3246899.35	39.747333	-104.621939
	5100.00	21.39	161.02	4814.86	-124.90	-1490.58	512.74	0.00	1151995.61	3246911.56	39.747238	-104.621897
	5200.00	21.39	161.02	4907.97	-127.79	-1525.07	524.61	0.00	1151961.24	3246923.76	39.747143	-104.621854
	5300.00	21.39	161.02	5001.08	-130.68	-1559.57	536.47	0.00	1151926.87	3246935.97	39.747049	-104.621812
	5400.00	21.39	161.02	5094.19	-133.57	-1594.06	548.34	0.00	1151892.49	3246948.17	39.746954	-104.621770
	5500.00	21.39	161.02	5187.30	-136.46	-1628.55	560.20	0.00	1151858.12	3246960.38	39.746859	-104.621728
	5600.00	21.39	161.02	5280.41	-139.35	-1663.04	572.07	0.00	1151823.75	3246972.59	39.746765	-104.621686
	5700.00	21.39	161.02	5373.52	-142.24	-1697.54	583.93	0.00	1151789.37	3246984.79	39.746670	-104.621643
	5800.00	21.39	161.02	5466.63	-145.13	-1732.03	595.80	0.00	1151755.00	3246997.00	39.746575	-104.621601
	5900.00	21.39	161.02	5559.74	-148.02	-1766.52	607.66	0.00	1151720.63	3247009.20	39.746481	-104.621559
	6000.00	21.39	161.02	5652.85	-150.91	-1801.01	619.53	0.00	1151686.25	3247021.41	39.746386	-104.621517
	6100.00	21.39	161.02	5745.96	-153.80	-1835.51	631.39	0.00	1151651.88	3247033.61	39.746291	-104.621475
	6200.00	21.39	161.02	5839.07	-156.69	-1870.00	643.26	0.00	1151617.51	3247045.82	39.746196	-104.621433
	6300.00	21.39	161.02	5932.18	-159.58	-1904.49	655.12	0.00	1151583.13	3247058.02	39.746102	-104.621390
	6400.00	21.39	161.02	6025.29	-162.47	-1938.98	666.99	0.00	1151548.76	3247070.23	39.746007	-104.621348
	6500.00	21.39	161.02	6118.40	-165.36	-1973.47	678.85	0.00	1151514.39	3247082.43	39.745912	-104.621306
	6600.00	21.39	161.02	6211.51	-168.25	-2007.97	690.72	0.00	1151480.02	3247094.64	39.745818	-104.621264
	6700.00	21.39	161.02	6304.62	-171.14	-2042.46	702.58	0.00	1151445.64	3247106.84	39.745723	-104.621221
	6800.00	21.39	161.02	6397.73	-174.03	-2076.95	714.45	0.00	1151411.27	3247119.05	39.745628	-104.621179
6900.00	21.39	161.02	6490.84	-176.92	-2111.44	726.31	0.00	1151376.90	3247131.25	39.745534	-104.621137	
7000.00	21.39	161.02	6583.95	-179.81	-2145.94	738.18	0.00	1151342.52	3247143.46	39.745439	-104.621095	
7100.00	21.39	161.02	6677.06	-182.70	-2180.43	750.04	0.00	1151308.15	3247155.66	39.745344	-104.621053	
7200.00	21.39	161.02	6770.17	-185.59	-2214.92	761.91	0.00	1151273.78	3247167.87	39.745250	-104.621011	
7300.00	21.39	161.02	6863.28	-188.48	-2249.41	773.77	0.00	1151239.40	3247180.07	39.745155	-104.620969	

Comments	MD (ft)	Incl (°)	Azim True (°)	TVD (ft)	VSEC (ft)	NS (ft)	EW (ft)	DLS (°/100ft)	Northing (ftUS)	Easting (ftUS)	Latitude (°)	Longitude (°)
KOP_Build/Turn 8 DLS	7336.13	21.39	161.02	6896.92	-189.52	-2261.88	778.06	0.00	1151226.98	3247184.48	39.745121	-104.620953
	7400.00	20.36	175.10	6956.64	-188.60	-2283.98	782.80	8.00	1151204.93	3247189.44	39.745060	-104.620936
	7500.00	21.16	197.68	7050.29	-176.11	-2318.56	778.80	8.00	1151170.31	3247185.78	39.744965	-104.620950
	7600.00	24.56	216.44	7142.55	-150.34	-2352.54	760.94	8.00	1151136.16	3247168.26	39.744872	-104.621014
	7700.00	29.69	229.99	7231.60	-111.81	-2385.23	729.58	8.00	1151103.15	3247137.22	39.744782	-104.621126
	7800.00	35.80	239.57	7315.72	-61.27	-2416.02	685.31	8.00	1151071.93	3247093.27	39.744697	-104.621283
	7900.00	42.48	246.59	7393.28	0.30	-2444.30	629.02	8.00	1151043.10	3247037.25	39.744620	-104.621483
	8000.00	49.48	251.98	7462.75	71.70	-2469.52	561.78	8.00	1151017.22	3246970.26	39.744551	-104.621722
	8100.00	56.69	256.33	7522.80	151.55	-2491.18	484.91	8.00	1150994.79	3246893.61	39.744491	-104.621996
	8200.00	64.02	260.02	7572.24	238.28	-2508.88	399.90	8.00	1150976.26	3246808.79	39.744443	-104.622298
	8300.00	71.44	263.26	7610.12	330.21	-2522.25	308.41	8.00	1150961.98	3246717.44	39.744406	-104.622623
	8400.00	78.90	266.23	7635.71	425.55	-2531.05	212.23	8.00	1150952.24	3246621.34	39.744382	-104.622965
	8500.00	86.40	269.06	7648.49	522.45	-2535.10	113.21	8.00	1150947.21	3246522.37	39.744371	-104.623317
TPZ Point, Hold to TD	8548.01	90.00	270.39	7650.00	568.97	-2535.33	65.24	8.00	1150946.50	3246474.41	39.744370	-104.623488
	8600.00	90.00	270.39	7650.00	619.23	-2534.97	13.25	0.00	1150946.35	3246422.41	39.744371	-104.623673
	8700.00	90.00	270.39	7650.00	715.90	-2534.29	-86.75	0.00	1150946.04	3246322.41	39.744373	-104.624028
	8800.00	90.00	270.39	7650.00	812.57	-2533.61	-186.75	0.00	1150945.74	3246222.41	39.744375	-104.624394
	8900.00	90.00	270.39	7650.00	909.23	-2532.92	-286.75	0.00	1150945.43	3246122.42	39.744377	-104.624740
	9000.00	90.00	270.39	7650.00	1005.90	-2532.24	-386.74	0.00	1150945.12	3246022.42	39.744378	-104.625095
	9100.00	90.00	270.39	7650.00	1102.57	-2531.56	-486.74	0.00	1150944.82	3245922.42	39.744380	-104.625451
	9200.00	90.00	270.39	7650.00	1199.24	-2530.87	-586.74	0.00	1150944.51	3245822.42	39.744382	-104.625807
	9300.00	90.00	270.39	7650.00	1295.91	-2530.19	-686.74	0.00	1150944.21	3245722.42	39.744384	-104.626162
	9400.00	90.00	270.39	7650.00	1392.58	-2529.51	-786.73	0.00	1150943.90	3245622.42	39.744386	-104.626518
	9500.00	90.00	270.39	7650.00	1489.25	-2528.82	-886.73	0.00	1150943.60	3245522.42	39.744388	-104.626873
	9600.00	90.00	270.39	7650.00	1585.92	-2528.14	-986.73	0.00	1150943.29	3245422.42	39.744390	-104.627229
	9700.00	90.00	270.39	7650.00	1682.59	-2527.46	-1086.73	0.00	1150942.99	3245322.43	39.744392	-104.627585
	9800.00	90.00	270.39	7650.00	1779.26	-2526.78	-1186.72	0.00	1150942.68	3245222.43	39.744393	-104.627940
	9900.00	90.00	270.39	7650.00	1875.93	-2526.09	-1286.72	0.00	1150942.38	3245122.43	39.744395	-104.628296
	10000.00	90.00	270.39	7650.00	1972.60	-2525.41	-1386.72	0.00	1150942.07	3245022.43	39.744397	-104.628651
	10100.00	90.00	270.39	7650.00	2069.26	-2524.73	-1486.72	0.00	1150941.77	3244922.43	39.744399	-104.629007
	10200.00	90.00	270.39	7650.00	2165.93	-2524.04	-1586.72	0.00	1150941.46	3244822.43	39.744401	-104.629363
	10300.00	90.00	270.39	7650.00	2262.60	-2523.36	-1686.71	0.00	1150941.16	3244722.43	39.744403	-104.629718
	10400.00	90.00	270.39	7650.00	2359.27	-2522.68	-1786.71	0.00	1150940.85	3244622.43	39.744405	-104.630074
	10500.00	90.00	270.39	7650.00	2455.94	-2521.99	-1886.71	0.00	1150940.55	3244522.44	39.744406	-104.630429
	10600.00	90.00	270.39	7650.00	2552.61	-2521.31	-1986.71	0.00	1150940.24	3244422.44	39.744408	-104.630785
	10700.00	90.00	270.39	7650.00	2649.28	-2520.63	-2086.70	0.00	1150939.94	3244322.44	39.744410	-104.631141
	10800.00	90.00	270.39	7650.00	2745.95	-2519.95	-2186.70	0.00	1150939.63	3244222.44	39.744412	-104.631496
	10900.00	90.00	270.39	7650.00	2842.62	-2519.26	-2286.70	0.00	1150939.33	3244122.44	39.744414	-104.631852
	11000.00	90.00	270.39	7650.00	2939.29	-2518.58	-2386.70	0.00	1150939.02	3244022.44	39.744416	-104.632207
	11100.00	90.00	270.39	7650.00	3035.96	-2517.90	-2486.69	0.00	1150938.72	3243922.44	39.744418	-104.632563
	11200.00	90.00	270.39	7650.00	3132.63	-2517.21	-2586.69	0.00	1150938.41	3243822.44	39.744419	-104.632919
	11300.00	90.00	270.39	7650.00	3229.30	-2516.53	-2686.69	0.00	1150938.11	3243722.45	39.744421	-104.633274
	11400.00	90.00	270.39	7650.00	3325.96	-2515.85	-2786.69	0.00	1150937.80	3243622.45	39.744423	-104.633630
	11500.00	90.00	270.39	7650.00	3422.63	-2515.16	-2886.69	0.00	1150937.50	3243522.45	39.744425	-104.633985
	11600.00	90.00	270.39	7650.00	3519.30	-2514.48	-2986.68	0.00	1150937.19	3243422.45	39.744427	-104.634341
	11700.00	90.00	270.39	7650.00	3615.97	-2513.80	-3086.68	0.00	1150936.89	3243322.45	39.744429	-104.634697
	11800.00	90.00	270.39	7650.00	3712.64	-2513.12	-3186.68	0.00	1150936.58	3243222.45	39.744430	-104.635052
	11900.00	90.00	270.39	7650.00	3809.31	-2512.43	-3286.68	0.00	1150936.27	3243122.45	39.744432	-104.635408
	12000.00	90.00	270.39	7650.00	3905.98	-2511.75	-3386.67	0.00	1150935.97	3243022.45	39.744434	-104.635763
	12100.00	90.00	270.39	7650.00	4002.65	-2511.07	-3486.67	0.00	1150935.66	3242922.45	39.744436	-104.636119
	12200.00	90.00	270.39	7650.00	4099.32	-2510.38	-3586.67	0.00	1150935.36	3242822.46	39.744438	-104.636475
	12300.00	90.00	270.39	7650.00	4195.99	-2509.70	-3686.67	0.00	1150935.05	3242722.46	39.744440	-104.636830
	12400.00	90.00	270.39	7650.00	4292.66	-2509.02	-3786.66	0.00	1150934.75	3242622.46	39.744441	-104.637186
	12500.00	90.00	270.39	7650.00	4389.33	-2508.33	-3886.66	0.00	1150934.44	3242522.46	39.744443	-104.637541
	12600.00	90.00	270.39	7650.00	4485.99	-2507.65	-3986.66	0.00	1150934.14	3242422.46	39.744445	-104.637897
	12700.00	90.00	270.39	7650.00	4582.66	-2506.97	-4086.66	0.00	1150933.83	3242322.46	39.744447	-104.638253
	12800.00	90.00	270.39	7650.00	4679.33	-2506.29	-4186.65	0.00	1150933.53	3242222.46	39.744449	-104.638608
	12900.00	90.00	270.39	7650.00	4776.00	-2505.60	-4286.65	0.00	1150933.22	3242122.46	39.744451	-104.638964
	13000.00	90.00	270.39	7650.00	4872.67	-2504.92	-4386.65	0.00	1150932.92	3242022.47	39.744452	-104.639319
	13100.00	90.00	270.39	7650.00	4969.34	-2504.24	-4486.65	0.00	1150932.61	3241922.47	39.744454	-104.639675
	13200.00	90.00	270.39	7650.00	5066.01	-2503.55	-4586.65	0.00	1150932.31	3241822.47	39.744456	-104.640031
	13300.00	90.00	270.39	7650.00	5162.68	-2502.87	-4686.64	0.00	1150932.00	3241722.47	39.744458	-104.640386
	13400.00	90.00	270.39	7650.00	5259.35	-2502.19	-4786.64	0.00	1150931.70	3241622.47	39.744460	-104.640742
	13500.00	90.00	270.39	7650.00	5356.02	-2501.50	-4886.64	0.00	1150931.39	3241522.47	39.744462	-104.641097
	13600.00	90.00	270.39	7650.00	5452.69	-2500.82	-4986.64	0.00	1150931.09	3241422.47	39.744463	-104.641453
	13700.00	90.00	270.39	7650.00	5549.36	-2500.14	-5086.63	0.00	1150930.78	3241322.47	39.744465	-104.641809
	13800.00	90.00	270.39	7650.00	5646.02	-2499.45	-5186.63	0.00	1150930.48	3241222.48	39.744467	-104.642164
	13900.00	90.00	270.39	7650.00	5742.69	-2498.77	-5286.63	0.00	1150930.17	3241122.48	39.744469	-104.642520
	14000.00	90.00	270.39	7650.00	5839.36	-2498.09	-5386.63	0.00	1150929.87	3241022.48	39.744471	-104.642875
	14100.00	90.00	270.39	7650.00	5936.03	-2497.41	-5486.62	0.00	1150929.56	3240922.48	39.744472	-104.643231
	14200.00	90.00	270.39	7650.00	6032.70	-2496.72	-5586.62	0.00	1150929.26	3240822.48	39.744474	-104.643587
	14300.00	90.00	270.39	7650.00	6129.37	-2496.04	-5686.62	0.00	1150928.95	3240722.48	39.744476	-104.643942
	14400.00	90.00	270.39	7650.00	6226.04	-2495.36	-5786.62	0.00	1150928.65	3240622.48	39.744478	-104.644298
	14500.00	90.00	270.39	7650.00	6322.71	-2494.67	-5886.62	0.00	1150928.34	3240522.48	39.744480	-104.644654
	14600.00	90.00	270.39	7650.00	6419.38	-2493.99	-5986.61	0.00	1150928.04	3240422.48	39.744482	-104.645009
	14700.00	90.00	270.39	7650.00	6516.05	-2493.31	-6086.61	0.00	1150927.73	3240322.49	39.744483	-104.645365
	14800.00	90.00	270.39	7650.00	6612.72	-2492.62	-6186.61	0.00	1150927.43	3240222.49	39.744485	-104.645720
	14900.00	90.00										

Comments	MD (ft)	Incl (°)	Azim True (°)	TVD (ft)	VSEC (ft)	NS (ft)	EW (ft)	DLS (°/100ft)	Northing (ftUS)	Easting (ftUS)	Latitude (°)	Longitude (°)
	17800.00	90.00	270.39	7650.00	9512.79	-2472.13	-9186.54	0.00	1150918.27	3237222.52	39.744539	-104.656388
	17900.00	90.00	270.39	7650.00	9609.46	-2471.45	-9286.54	0.00	1150917.97	3237122.52	39.744541	-104.656744
	18000.00	90.00	270.39	7650.00	9706.13	-2470.77	-9386.53	0.00	1150917.66	3237022.53	39.744542	-104.657100
	18100.00	90.00	270.39	7650.00	9802.80	-2470.09	-9486.53	0.00	1150917.35	3236922.53	39.744544	-104.657455
	18200.00	90.00	270.39	7650.00	9899.47	-2469.40	-9586.53	0.00	1150917.05	3236822.53	39.744546	-104.657811
Reserve 3-65 35-34 3CH BHL	18204.53	90.00	270.39	7650.00	9903.85	-2469.37	-9591.06	0.00	1150917.04	3236818.00	39.744546	-104.657827

Survey Type: Def Plan

Survey Error Model: ISCWSA Rev 0 *** 3-D 95.000% Confidence 2.7955 sigma
Survey Program:

Description	Part	MD From (ft)	MD To (ft)	EOU Freq (ft)	Hole Size (in)	Casing Diameter (in)	Expected Max Inclination (deg)	Survey Tool Type	Borehole / Survey
	1	0.000	28.000	1/100.000	13.500	9.625		NAL_MWD-NON_SLB-Depth Only	Original Hole / Reserve 3-65 35-34 3CH Plan #1
	1	28.000	2000.000	1/100.000	13.500	9.625		NAL_MWD-NON_SLB	Original Hole / Reserve 3-65 35-34 3CH Plan #1
	1	2000.000	18204.532	1/100.000	8.500	5.500		NAL_MWD_PLUS_0.5_DEG	Original Hole / Reserve 3-65 35-34 3CH Plan #1