
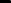
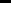


WELL LOCATION PLAT

SECTION BREAKDOWN

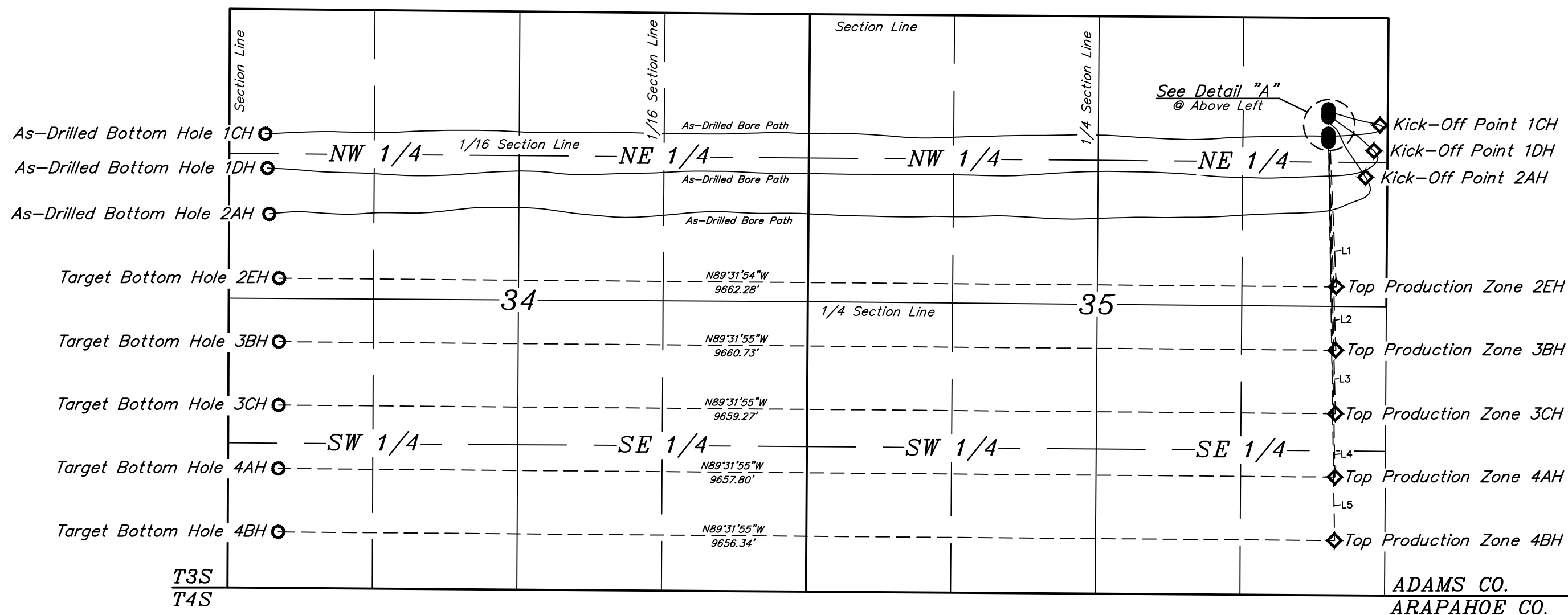
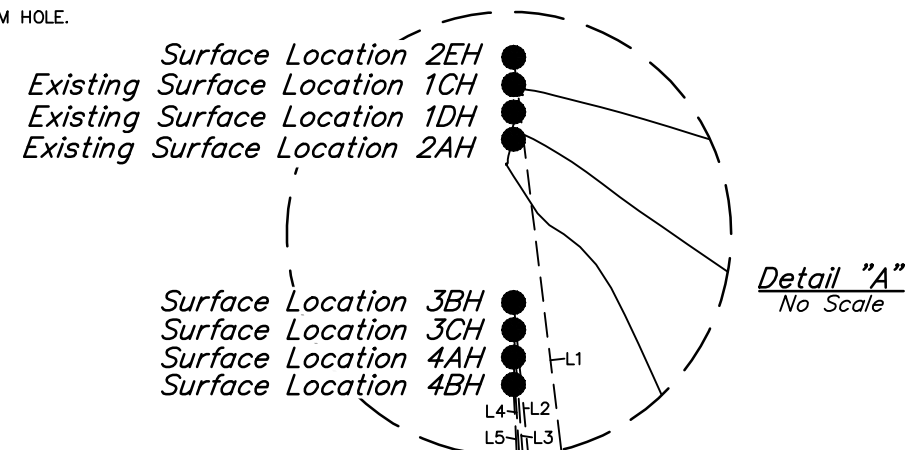


 = WELLHEAD LOCATION.
 = TOP PRODUCTION ZONE.
 = TARGET BOTTOM HOLE.

T3S, R65W, 6th P.M.



LINE TABLE		
LINE	DIRECTION	LENGTH
L1	S02°27'11"E	1626.51
L2	S01°54'01"E	1982.07
L3	S01°23'52"E	2536.73
L4	S01°04'43"E	3091.55
L5	S00°51'17"E	3646.39



REV: 5 05-07-20 R.J. (TPZ & BHL MOVES)

NOTES:

CRESTONE PEAK RESOURCES OPERATING LLC

**RESERVE #3-65 35-34 2EH, 3BH, 3CH, 4AH AND 4BH
NE 1/4 NE 1/4, SECTION 35, T3S, R65W, 6th P.M.
ADAMS COUNTY, COLORADO**

SURVEYED BY	C.M., O.R.	09-04-18	SCALE
DRAWN BY	K.A.	09-25-18	1" = 1000'
MULTI-WELL PLAN		FIGURE #4	



UELS, LLC
Corporate Office * 85 South 200 East
Vernal, UT 84078 * (435) 789-1017

PROCEED IN AN EASTERLY DIRECTION FROM THE INTERSECTION OF INTERSTATE 25 & INTERSTATE 70 IN DENVER, COLORADO ALONG INTERSTATE 70 APPROXIMATELY 17.8 MILES TO EXIT 292 TO THE SOUTHEAST; EXIT RIGHT AND PROCEED IN A SOUTHEASTERLY DIRECTION APPROXIMATELY 0.3 MILES TO THE JUNCTION OF THIS ROAD AND HIGHWAY 36/COLFAX AVENUE TO THE NORTH; TURN LEFT AND PROCEED IN A NORTHERLY, THEN EASTERLY DIRECTION APPROXIMATELY 2.3 MILES TO THE JUNCTION OF THIS ROAD AND COUNTY ROAD 23/HUDSON ROAD TO THE NORTH; TURN LEFT AND PROCEED IN A NORTHERLY DIRECTION APPROXIMATELY 0.6 MILES TO THE BEGINNING OF THE PROPOSED ACCESS TO THE WEST; FOLLOW ROAD FLAGS IN A WESTERLY DIRECTION APPROXIMATELY 452' TO THE PROPOSED LOCATION.

TOTAL DISTANCE FROM DENVER, COLORADO TO THE PROPOSED WELL LOCATION IS APPROXIMATELY 21.1 MILES.

REV: 1 03-03-20 J.U. (UPDATE COMPANY NAME)

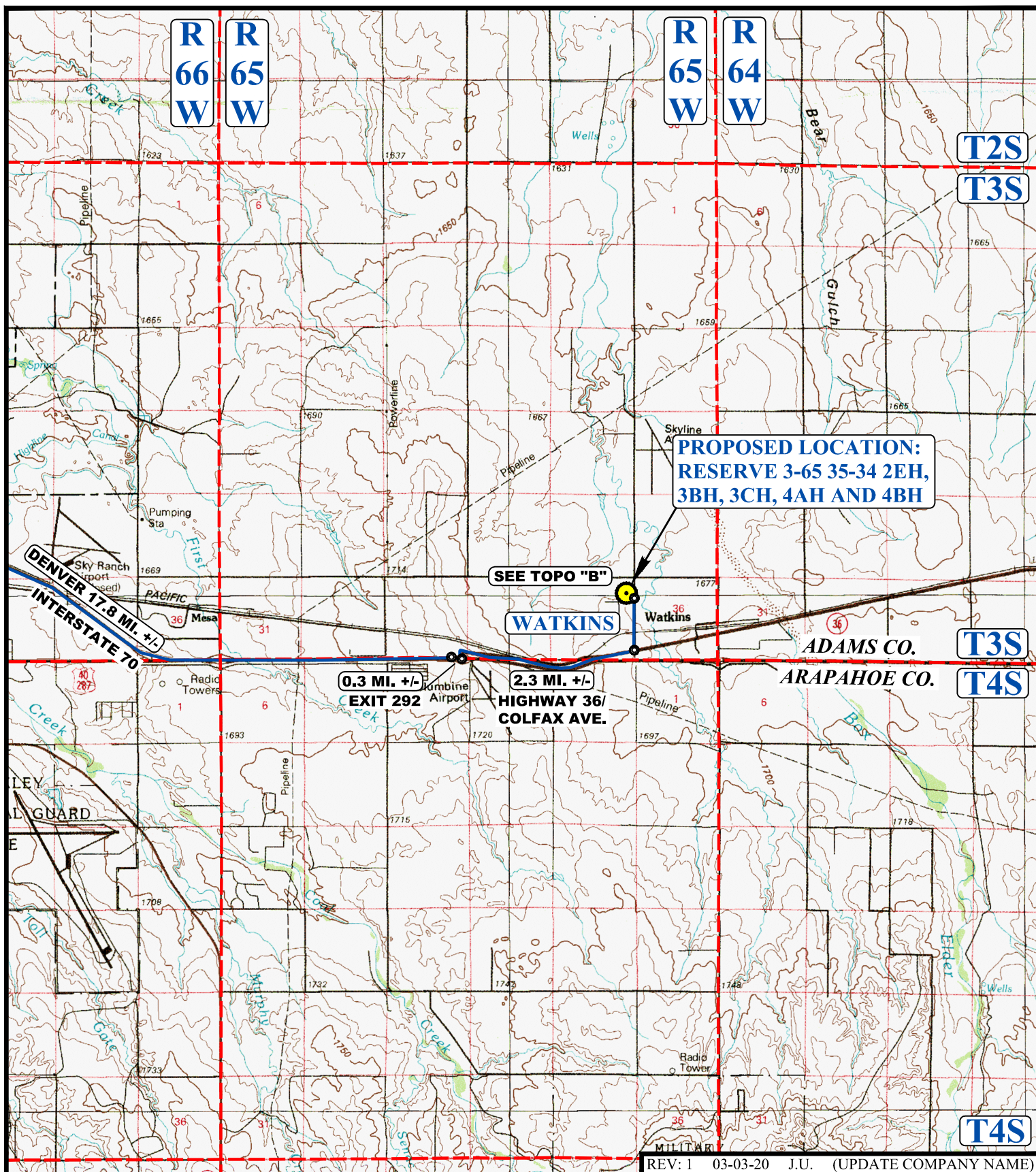
CRESTONE PEAK RESOURCES OPERATING LLC

**RESERVE #3-65 35-34 2EH, 3BH, 3CH, 4AH AND 4BH
NE 1/4 NE 1/4, SECTION 35, T3S, R65W, 6th P.M.
ADAMS COUNTY, COLORADO**



UELS, LLC
Corporate Office * 85 South 200 East
Vernal, UT 84078 * (435) 789-1017

SURVEYED BY	C.M., O.R.	09-04-18	
DRAWN BY	J.L.G.	09-11-18	
ROAD DESCRIPTION			



LEGEND:

 PROPOSED LOCATION



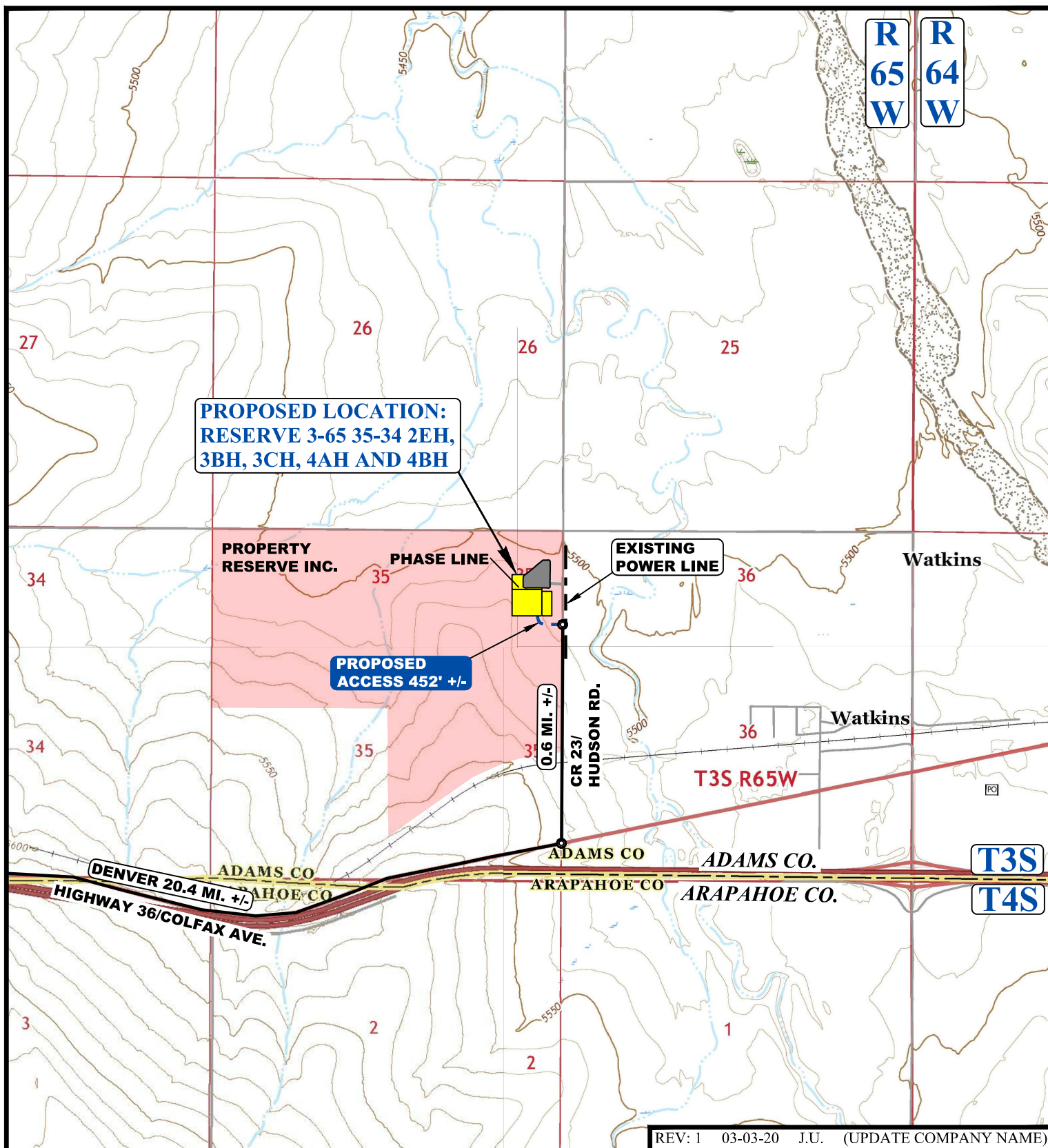
UELS, LLC
Corporate Office * 85 South 200 East
Vernal, UT 84078 * (435) 789-1017

CRESTONE PEAK RESOURCES OPERATING LLC

RESERVE #3-65 35-34 2EH, 3BH, 3CH, 4AH AND 4BH
NE 1/4 NE 1/4, SECTION 35, T3S, R65W, 6th P.M.
ADAMS COUNTY, COLORADO

SURVEYED BY	C.M., O.R.	09-04-18	SCALE
DRAWN BY	J.L.G.	09-11-18	1 : 100,000
ACCESS ROAD MAP			TOPO A

REV: 1 03-03-20 J.U. (UPDATE COMPANY NAME)



NOTE: PARCEL DATA SHOWN HAS BEEN OBTAINED FROM VARIOUS SOURCES AND SHOULD BE USED FOR MAPPING, GRAPHIC AND PLANNING PURPOSES ONLY. NO WARRANTY IS MADE BY UINTAH ENGINEERING AND LAND SURVEYING (UELS) FOR ACCURACY OF THE PARCEL DATA.

LEGEND:

- EXISTING ROAD
- PROPOSED ROAD
- EXISTING POWER LINE



CRESTONE PEAK RESOURCES OPERATING LLC

RESERVE #3-65 35-34 2EH, 3BH, 3CH, 4AH AND 4BH
NE 1/4 NE 1/4, SECTION 35, T3S, R65W, 6th P.M.
ADAMS COUNTY, COLORADO

SURVEYED BY	C.M., O.R.	09-04-18	SCALE
DRAWN BY	J.L.G.	09-11-18	1 : 24,000
ACCESS ROAD MAP			TOPO B



UELS, LLC
Corporate Office * 85 South 200 East
Vernal, UT 84078 * (435) 789-1017



PHOTO: VIEW OF REFERENCE AREA

CAMERA ANGLE: NORTHERLY



PHOTO: VIEW OF REFERENCE AREA

CAMERA ANGLE: EASTERLY

REV: 1 03-03-20 J.U. (UPDATE COMPANY NAME)

CRESTONE PEAK RESOURCES OPERATING LLC

**RESERVE #3-65 35-34 2EH, 3BH, 3CH, 4AH AND 4BH
NE 1/4 NE 1/4, SECTION 35, T3S, R65W, 6th P.M.
ADAMS COUNTY, COLORADO**



UELS, LLC
Corporate Office * 85 South 200 East
Vernal, UT 84078 * (435) 789-1017

TAKEN BY	C.M., O.R.	09-04-18	
DRAWN BY	J.L.G.	09-11-18	
REFERENCE AREA PHOTOS			REF 1



PHOTO: VIEW OF REFERENCE AREA

CAMERA ANGLE: SOUTHERLY



PHOTO: VIEW OF REFERENCE AREA

CAMERA ANGLE: WESTERLY

REV: 1 03-03-20 J.U. (UPDATE COMPANY NAME)

CRESTONE PEAK RESOURCES OPERATING LLC

**RESERVE #3-65 35-34 2EH, 3BH, 3CH, 4AH AND 4BH
NE 1/4 NE 1/4, SECTION 35, T3S, R65W, 6th P.M.
ADAMS COUNTY, COLORADO**



UELS, LLC
Corporate Office * 85 South 200 East
Vernal, UT 84078 * (435) 789-1017

TAKEN BY	C.M., O.R.	09-04-18	
DRAWN BY	J.L.G.	09-11-18	
REFERENCE AREA PHOTOS			REF 2