



# Crestone Peak Resources

Schlumberger

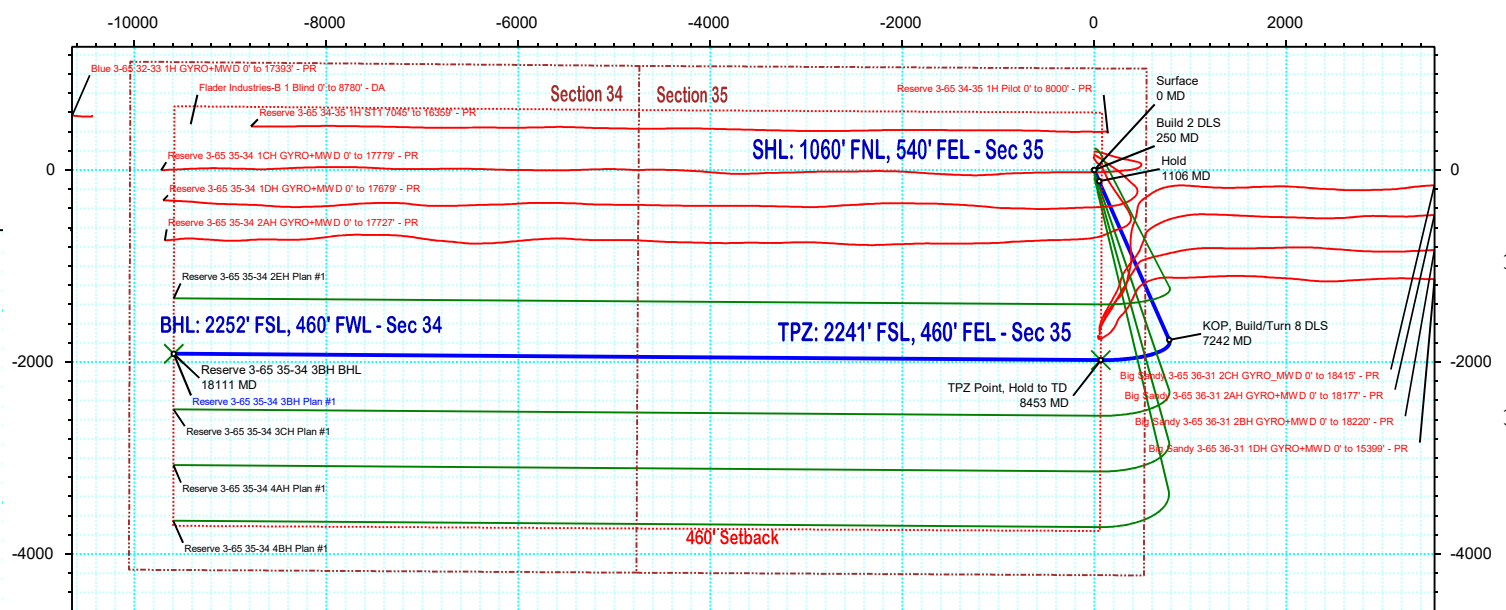
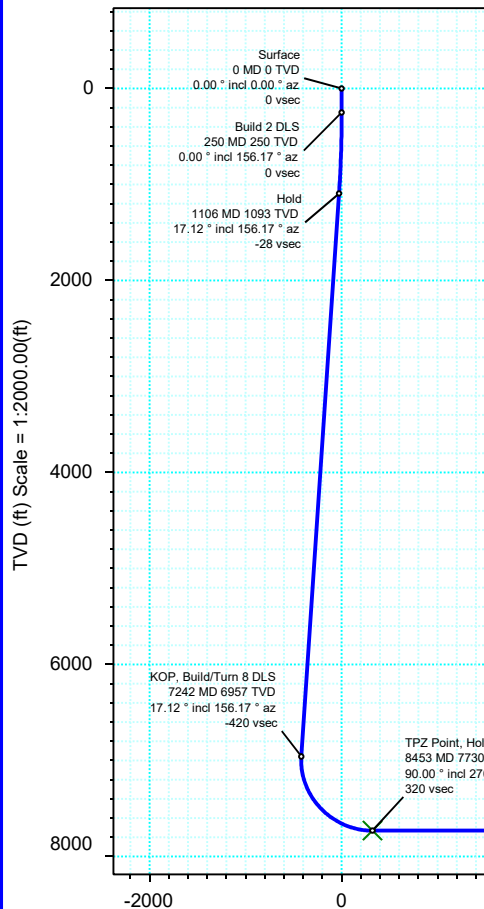
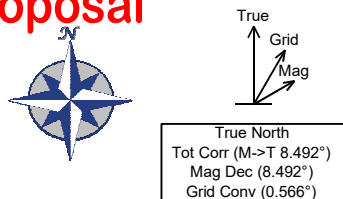
Plan 1

Borehole:	Well:	Field:	Structure:
Original Hole	Reserve 3-65 35-34 3BH	CO, Adams County (NAD 83 NZ)	Crestone Peak 35-03S-65W (Reserve Pad)

Gravity & Magnetic Parameters			Surface Location			Miscellaneous		
Model:	HDGM 2020	Dip: 66.335°	Date:	14-May-2020	Lat: N 39 45 5.03	Northings:	1153505.81ftUS	Grid Conv: 0.5662°
MagDec:	8.492°	FS: 51582.738nT	Gravity FS:	998.932mgn (9.80665 Based)	Lon: W 104 37 25.40	Easting:	3246383.59ftUS	Scale Fact: 0.99999458
						Slot:	Reserve 3-65 35-34 3BH	TVD Ref: KB 28ft(5541.8ft above MSL)
						Plan:	Reserve 3-65 35-34 3BH Plan #1	

Proposal

EW (ft) Scale = 1:2000.00(ft)



Surface Location								
Northing: 1153505.8102943			Easting: 3246383.59031886			Latitude: N 39 45 5.03		
						Longitude: W 104 37 25.40		
						VSec Azimuth: 258.71		
Target Description		Grid Coord		Local Coord				
Target Name		Latitude	Longitude	Northings	Easting	TVD	VSec	
Reserve Pad Sec 35-34 - 460' SB		N 39 45 7.25	W 104 37 25.40	1153729.82	3246381.38	5541.80	-43.86	224.03
Reserve Pad Sec 35-34		N 39 45 7.25	W 104 37 25.40	1153729.82	3246381.38	5541.80	-43.86	224.03
Reserve 3-65 35-34 3BH BHL		N 39 44 46.10	W 104 39 28.16	1151496.94	3236813.89	7730.00	9778.35	-1914.22
Reserve 3-65 35-34 3BH TPZ		N 39 44 45.46	W 104 37 24.52	1151526.42	3246471.77	7730.00	320.36	-1980.18

Critical Points								
Critical Point	MD	INCL	AZIM	TVD	VSEC	N(+)/S(-)	E(+)/W(-)	DLS
Surface	0.00	0.00	0.00	0.00	0.00	0.00	0.00	
Build 2 DLS	250.00	0.00	156.17	250.00	0.00	0.00	0.00	0.00
Hold	1105.86	17.12	156.17	1093.19	-27.56	-116.07	51.28	2.00
KOP, Build/Turn 8 DLS	7241.67	17.12	156.17	6957.21	-419.82	-1768.00	781.03	0.00
TPZ Point, Hold to TD	8453.38	90.00	270.39	7730.00	320.36	-1980.18	68.61	8.00
Reserve 3-65 35-34 3BH BHL	18111.36	90.00	270.39	7730.00	9778.35	-1914.22	-9589.15	0.00

Vertical Section (ft) Azim = 258.71° Scale = 1:2000.00(ft) Origin = 0N/-S, 0E/-W

## Reserve 3-65 35-34 3BH Plan #1 Proposal Geodetic Report

(Def Plan)

**Report Date:** May 14, 2020 - 03:03 PM  
**Client:** Crestone Peak Resources  
**Field:** CO, Adams County (NAD 83 NZ)  
**Structure / Slot:** Crestone Peak 35-03S-65W (Reserve Pad) / Reserve 3-65 35-34 3BH  
**Well:** Reserve 3-65 35-34 3BH  
**Borehole:** Original Hole  
**UWI / API#:** Unknown / Unknown  
**Survey Name:** Reserve 3-65 35-34 3BH Plan #1  
**Survey Date:** March 09, 2020  
**Tort / AHD / DDI / ERD Ratio:** 114.054 ° / 12389.820 ft / 6.520 / 1.603  
**Coordinate Reference System:** NAD83 Colorado State Plane, Northern Zone, US Feet  
**Location Lat / Long:** N 39° 45' 5.03280", W 104° 37' 25.39560"  
**Location Grid N/E Y/X:** N 1153505.810 ftUS, E 3246383.590 ftUS  
**CRS Grid Convergence Angle:** 0.5662 °  
**Grid Scale Factor:** 0.99999458  
**Version / Patch:** 2.10.787.0

**Survey / DLS Computation:** Minimum Curvature / Lubinski  
**Vertical Section Azimuth:** 258.711 ° (True North)  
**Vertical Section Origin:** 0.000 ft, 0.000 ft  
**TVD Reference Datum:** KB 28ft  
**TVD Reference Elevation:** 5541.800 ft above MSL  
**Seabed / Ground Elevation:** 5513.800 ft above MSL  
**Magnetic Declination:** 8.492 °  
**Total Gravity Field Strength:** 998.9315mgn (9.80665 Based)  
**Gravity Model:** GARM  
**Total Magnetic Field Strength:** 51582.738 nT  
**Magnetic Dip Angle:** 66.335 °  
**Declination Date:** May 14, 2020  
**Magnetic Declination Model:** HDGM 2020  
**North Reference:** True North  
**Grid Convergence Used:** 0.0000 °  
**Total Corr Mag North→True North:** 8.4917 °  
**Local Coord Referenced To:** Well Head

Comments	MD (ft)	Incl (°)	Azim True (°)	TVD (ft)	VSEC (ft)	NS (ft)	EW (ft)	DLS (°/100ft)	Northing (ftUS)	Easting (ftUS)	Latitude (°)	Longitude (°)	
Surface	0.00	0.00	0.00	0.00	0.00	0.00	0.00	0.00	N/A	1153505.81	3246383.59	39.751398	-104.623721
Build 2 DLS	100.00	0.00	156.17	100.00	0.00	0.00	0.00	0.00	1153505.81	3246383.59	39.751398	-104.623721	
	200.00	0.00	156.17	200.00	0.00	0.00	0.00	0.00	1153505.81	3246383.59	39.751398	-104.623721	
	250.00	0.00	156.17	250.00	0.00	0.00	0.00	0.00	1153505.81	3246383.59	39.751398	-104.623721	
	300.00	1.00	156.17	300.00	-0.09	-0.40	0.18	2.00	1153505.41	3246383.77	39.751397	-104.623720	
	400.00	3.00	156.17	399.93	-0.85	-3.59	1.59	2.00	1153502.23	3246385.21	39.751388	-104.623715	
	500.00	5.00	156.17	499.68	-2.37	-9.97	4.41	2.00	1153495.88	3246388.09	39.751371	-104.623705	
	600.00	7.00	156.17	599.13	-4.64	-19.53	8.63	2.00	1153486.36	3246392.41	39.751344	-104.623690	
	700.00	9.00	156.17	698.15	-7.66	-32.26	14.25	2.00	1153473.69	3246398.16	39.751309	-104.623670	
	800.00	11.00	156.17	796.63	-11.43	-48.15	21.27	2.00	1153457.88	3246405.33	39.751266	-104.623645	
	900.00	13.00	156.17	894.44	-15.95	-67.16	29.67	2.00	1153438.94	3246413.92	39.751214	-104.623615	
Hold	1000.00	15.00	156.17	991.46	-21.20	-89.29	39.45	2.00	1153416.91	3246423.92	39.751153	-104.623581	
	1100.00	17.00	156.17	1087.58	-27.19	-114.50	50.58	2.00	1153391.81	3246435.30	39.751084	-104.623541	
	1105.86	17.12	156.17	1093.19	-27.56	-116.07	51.28	2.00	1153390.25	3246436.01	39.751079	-104.623539	
	1200.00	17.12	156.17	1183.16	-33.58	-141.42	62.47	0.00	1153365.02	3246447.46	39.751010	-104.623499	
	1300.00	17.12	156.17	1278.73	-39.97	-168.34	74.37	0.00	1153338.21	3246459.62	39.750936	-104.623457	
	1400.00	17.12	156.17	1374.30	-46.37	-195.27	86.26	0.00	1153311.41	3246471.78	39.750862	-104.623414	
	1500.00	17.12	156.17	1469.87	-52.76	-222.19	98.15	0.00	1153284.60	3246483.93	39.750788	-104.623372	
	1600.00	17.12	156.17	1565.44	-59.15	-249.11	110.05	0.00	1153257.80	3246496.09	39.750714	-104.623330	
	1700.00	17.12	156.17	1661.01	-65.54	-276.03	121.94	0.00	1153231.00	3246508.25	39.750640	-104.623287	
	1800.00	17.12	156.17	1756.58	-71.94	-302.96	133.83	0.00	1153204.19	3246520.41	39.750566	-104.623245	
	1900.00	17.12	156.17	1852.15	-78.33	-329.88	145.73	0.00	1153177.39	3246532.57	39.750492	-104.623203	
	2000.00	17.12	156.17	1947.72	-84.72	-356.80	157.62	0.00	1153150.59	3246544.73	39.750419	-104.623160	
	2100.00	17.12	156.17	2043.29	-91.12	-383.72	169.51	0.00	1153123.78	3246556.89	39.750345	-104.623118	
	2200.00	17.12	156.17	2138.86	-97.51	-410.65	181.41	0.00	1153096.98	3246569.05	39.750271	-104.623076	
	2300.00	17.12	156.17	2234.43	-103.90	-437.57	193.30	0.00	1153070.18	3246581.20	39.750197	-104.623034	
	2400.00	17.12	156.17	2330.00	-110.29	-464.49	205.19	0.00	1153043.37	3246593.36	39.750123	-104.622991	
	2500.00	17.12	156.17	2425.57	-116.69	-491.42	217.09	0.00	1153016.57	3246605.52	39.750049	-104.622949	
	2600.00	17.12	156.17	2521.14	-123.08	-518.34	228.98	0.00	1152989.76	3246617.68	39.749975	-104.622907	
	2700.00	17.12	156.17	2616.71	-129.47	-545.26	240.87	0.00	1152962.96	3246629.84	39.749901	-104.622864	
	2800.00	17.12	156.17	2712.28	-135.87	-572.18	252.77	0.00	1152936.16	3246642.00	39.749827	-104.622822	
	2900.00	17.12	156.17	2807.85	-142.26	-599.11	264.66	0.00	1152909.35	3246654.16	39.749753	-104.622780	
	3000.00	17.12	156.17	2903.42	-148.65	-626.03	276.55	0.00	1152882.55	3246666.32	39.749679	-104.622737	
	3100.00	17.12	156.17	2998.99	-155.04	-652.95	288.45	0.00	1152855.75	3246678.47	39.749606	-104.622695	
	3200.00	17.12	156.17	3094.56	-161.44	-679.87	300.34	0.00	1152828.94	3246690.63	39.749532	-104.622653	
	3300.00	17.12	156.17	3190.14	-167.83	-706.80	312.24	0.00	1152802.14	3246702.79	39.749458	-104.622611	
	3400.00	17.12	156.17	3285.71	-174.22	-733.72	324.13	0.00	1152775.34	3246714.95	39.749384	-104.622568	
	3500.00	17.12	156.17	3381.28	-180.62	-760.64	336.02	0.00	1152748.53	3246727.11	39.749310	-104.622526	
	3600.00	17.12	156.17	3476.85	-187.01	-787.56	347.92	0.00	1152721.73	3246739.27	39.749236	-104.622484	
	3700.00	17.12	156.17	3572.42	-193.40	-814.49	359.81	0.00	1152694.92	3246751.43	39.749162	-104.622441	
	3800.00	17.12	156.17	3667.99	-199.79	-841.41	371.70	0.00	1152668.12	3246763.59	39.749088	-104.622399	
	3900.00	17.12	156.17	3763.56	-206.19	-868.33	383.60	0.00	1152641.32	3246775.74	39.749014	-104.622357	
	4000.00	17.12	156.17	3859.13	-212.58	-895.26	395.49	0.00	1152614.51	3246787.90	39.748940	-104.622315	
	4100.00	17.12	156.17	3954.70	-218.97	-922.18	407.38	0.00	1152587.71	3246800.06	39.748866	-104.622272	
	4200.00	17.12	156.17	4050.27	-225.37	-949.10	419.28	0.00	1152560.91	3246812.22	39.748793	-104.622230	
	4300.00	17.12	156.17	4145.84	-231.76	-976.02	431.17	0.00	1152534.10	3246824.38	39.748719	-104.622188	
	4400.00	17.12	156.17	4241.41	-238.15	-1002.95	443.06	0.00	1152507.30	3246836.54	39.748645	-104.622145	
	4500.00	17.12	156.17	4336.98	-244.54	-1029.87	454.96	0.00	1152480.49	3246848.70	39.748571	-104.622103	
	4600.00	17.12	156.17	4432.55	-250.94	-1056.79	466.85	0.00	1152453.69	3246860.86	39.748497	-104.622061	
	4700.00	17.12	156.17	4528.12	-257.33	-1083.71	478.74	0.00	1152426.89	3246873.01	39.748423	-104.622018	
	4800.00	17.12	156.17	4623.69	-263.72	-1110.64	490.64	0.00	1152400.08	3246885.17	39.748349	-104.621976	
	4900.00	17.12	156.17	4719.26	-270.12	-1137.56	502.53	0.00	1152373.28	3246897.33	39.748275	-104.621934	
	5000.00	17.12	156.17	4814.83	-276.51	-1164.48	514.42	0.00	1152346.48	3246909.49	39.748201	-104.621892	
	5100.00	17.12	156.17	4910.40	-282.90	-1191.41	526.32	0.00	1152319.67	3246921.65	39.748127	-104.621849	
	5200.00	17.12	156.17	5005.97	-289.29	-1218.33	538.21	0.00	1152292.87	3246933.81	39.748053	-104.621807	
	5300.00	17.12	156.17	5101.54	-295.69	-1245.25	550.10	0.00	1152266.07	3246945.97	39.747980	-104.621765	
	5400.00	17.12	156.17	5197.12	-302.08	-1272.17	562.00	0.00	1152239.26	3246958.13	39.747906	-104.621722	
	5500.00	17.12	156.17	5292.69	-308.47	-1299.10	573.89	0.00	1152212.46	3246970.29	39.747832	-104.621680	
	5600.00	17.12	156.17	5388.26	-314.87	-1326.02	585.78	0.00	1152185.65	3246982.44	39.747758	-104.621638	
	5700.00	17.12	156.17	5483.83	-321.26	-1352.94	597.68	0.00	1152158.85	3246994.60	39.747684	-104.621595	
	5800.00	17.12	156.17	5579.40	-327.65	-1379.86	609.57	0.00	1152132.05	3247006.76	39.747610	-104.621553	
	5900.00	17.12	156.17	5674.97	-334.04	-1406.79	621.46	0.00	1152105.24	3247018.92	39.747536	-104.621511	
	6000.00	17.12	156.17	5770.54	-340.44	-1433.71	633.36	0.00	1152078.44	3247031.08	39.747462	-104.621469	
	6100.00	17.12	156.17	5866.11	-346.83	-1460.63	645.25	0.00	1152051.64	3247043.24	39.747388	-104.621426	
	6200.00	17.12	156.17	5961.68	-353.22	-1487.55	657.14	0.00	1152024.83	3247055.40	39.747314	-104.621384	
	6300.00	17.12	156.17	6057.25	-359.62	-1514.48	669.04	0.00	1151998.03	3247067.56	39.747240	-104.621342	
	6400.00	17.12	156.17	6152.82	-366.01	-1541.40	680.93	0.00	1151971.23	3247079.71	39.747167	-104.621299	
6500.00	17.12	156.17	6248.39	-372.40	-1568.32	692.82	0.00	1151944.42	3247091.87	39.747093	-104.621257		
6600.00	17.12	156.17	6343.96	-378.79	-1595.25	704.72	0.00	1151917.62	3247104.03	39.747019	-104.621215		
6700.00	17.12	156.17	6439.53	-385.19	-1622.17	716.61	0.00	1151890.81	3247116.19	39.746945	-104.621173		
6800.00	17.12	156.17	6535.10	-391.58	-1649.09	728.50	0.00	1151864.01	3247128.35	39.746871	-104.621130		
6900.00	17.12	156.17	6630.67	-397.97	-1676.01	740.40	0.00	1151837.21	3247140.51	39.746797	-104.621088		
7000.00	17.12	156.17	6726.24	-404.37	-1702.94	752.29	0.00	1151810.40	3247152.67	39.746723	-104.621046		
7100.00	17.12	156.17	6821.81	-410.76	-1729.86	764.18	0.00	1151783.60	3247164.83	39.746649	-104.621003		
7200.00	17.12	156.17	6917.38	-417.15	-1756.78	776.08	0.00	1151756.80	3247176.98	39.746575	-104.620961		
KOP_Build/Turn ROI S	7241.67	17.12	156.17	6957.21	-419.82	-1768.00	781.03	0.00	1151745.63	3247182.05	39.746544	-104.620944	

Comments	MD (ft)	Incl (°)	Azim True (°)	TVD (ft)	VSEC (ft)	NS (ft)	EW (ft)	DLS (°/100ft)	Northing (ftUS)	Easting (ftUS)	Latitude (°)	Longitude (°)
	7300.00	15.85	172.05	7013.17	-421.22	-1783.75	785.61	8.00	1151729.93	3247186.78	39.746501	-104.620927
	7400.00	16.68	200.75	7109.32	-412.80	-1810.73	782.41	8.00	1151702.91	3247183.84	39.746427	-104.620939
	7500.00	20.73	222.49	7204.14	-390.87	-1837.24	765.34	8.00	1151676.23	3247167.04	39.746354	-104.620999
	7600.00	26.58	236.24	7295.76	-355.86	-1862.77	734.73	8.00	1151650.41	3247136.69	39.746284	-104.621108
	7700.00	33.28	245.06	7382.42	-308.45	-1886.81	691.19	8.00	1151625.94	3247093.39	39.746218	-104.621263
	7800.00	40.41	251.13	7462.43	-249.57	-1908.90	635.56	8.00	1151603.30	3247037.97	39.746158	-104.621461
	7900.00	47.78	255.62	7534.22	-180.36	-1928.61	568.91	8.00	1151582.93	3246971.53	39.746104	-104.621698
	8000.00	55.28	259.17	7596.40	-102.16	-1945.55	492.56	8.00	1151565.24	3246895.34	39.746057	-104.621969
	8100.00	62.87	262.12	7647.76	-16.51	-1959.40	407.97	8.00	1151550.55	3246810.90	39.746019	-104.622270
	8200.00	70.52	264.69	7687.30	74.94	-1969.88	316.81	8.00	1151539.17	3246719.85	39.745990	-104.622594
	8300.00	78.19	267.03	7714.25	170.41	-1976.79	220.84	8.00	1151531.31	3246623.96	39.745971	-104.622936
	8400.00	85.89	269.23	7728.09	268.03	-1980.00	121.94	8.00	1151527.12	3246525.09	39.745962	-104.623287
TPZ Point, Hold to TD	8453.38	90.00	270.39	7730.00	320.36	-1980.18	68.61	8.00	1151526.42	3246471.77	39.745962	-104.623477
	8500.00	90.00	270.39	7730.00	366.02	-1979.86	21.99	0.00	1151526.28	3246425.14	39.745963	-104.623643
	8600.00	90.00	270.39	7730.00	463.95	-1979.18	-78.01	0.00	1151525.97	3246325.14	39.745965	-104.623998
	8700.00	90.00	270.39	7730.00	561.87	-1978.49	-178.01	0.00	1151525.67	3246225.14	39.745967	-104.624354
	8800.00	90.00	270.39	7730.00	659.80	-1977.81	-278.00	0.00	1151525.36	3246125.15	39.745968	-104.624710
	8900.00	90.00	270.39	7730.00	757.73	-1977.13	-378.00	0.00	1151525.06	3246025.15	39.745970	-104.625065
	9000.00	90.00	270.39	7730.00	855.66	-1976.45	-478.00	0.00	1151524.75	3245925.15	39.745972	-104.625421
	9100.00	90.00	270.39	7730.00	953.59	-1975.76	-578.00	0.00	1151524.45	3245825.15	39.745974	-104.625776
	9200.00	90.00	270.39	7730.00	1051.52	-1975.08	-677.99	0.00	1151524.14	3245725.15	39.745976	-104.626132
	9300.00	90.00	270.39	7730.00	1149.45	-1974.40	-777.99	0.00	1151523.84	3245625.15	39.745978	-104.626488
	9400.00	90.00	270.39	7730.00	1247.38	-1973.71	-877.99	0.00	1151523.53	3245525.15	39.745980	-104.626843
	9500.00	90.00	270.39	7730.00	1345.31	-1973.03	-977.99	0.00	1151523.23	3245425.15	39.745982	-104.627199
	9600.00	90.00	270.39	7730.00	1443.24	-1972.35	-1077.99	0.00	1151522.92	3245325.16	39.745983	-104.627555
	9700.00	90.00	270.39	7730.00	1541.17	-1971.66	-1177.98	0.00	1151522.62	3245225.16	39.745985	-104.627910
	9800.00	90.00	270.39	7730.00	1639.10	-1970.98	-1277.98	0.00	1151522.31	3245125.16	39.745987	-104.628266
	9900.00	90.00	270.39	7730.00	1737.03	-1970.30	-1377.98	0.00	1151522.01	3245025.16	39.745989	-104.628621
	10000.00	90.00	270.39	7730.00	1834.95	-1969.62	-1477.98	0.00	1151521.70	3244925.16	39.745991	-104.628977
	10100.00	90.00	270.39	7730.00	1932.88	-1968.93	-1577.97	0.00	1151521.39	3244825.16	39.745993	-104.629333
	10200.00	90.00	270.39	7730.00	2030.81	-1968.25	-1677.97	0.00	1151521.09	3244725.16	39.745995	-104.629688
	10300.00	90.00	270.39	7730.00	2128.74	-1967.57	-1777.97	0.00	1151520.78	3244625.16	39.745996	-104.630044
	10400.00	90.00	270.39	7730.00	2226.67	-1966.88	-1877.97	0.00	1151520.48	3244525.17	39.745998	-104.630399
	10500.00	90.00	270.39	7730.00	2324.60	-1966.20	-1977.96	0.00	1151520.17	3244425.17	39.746000	-104.630755
	10600.00	90.00	270.39	7730.00	2422.53	-1965.52	-2077.96	0.00	1151519.87	3244325.17	39.746002	-104.631111
	10700.00	90.00	270.39	7730.00	2520.46	-1964.84	-2177.96	0.00	1151519.56	3244225.17	39.746004	-104.631466
	10800.00	90.00	270.39	7730.00	2618.39	-1964.15	-2277.96	0.00	1151519.26	3244125.17	39.746006	-104.631822
	10900.00	90.00	270.39	7730.00	2716.32	-1963.47	-2377.96	0.00	1151518.95	3244025.17	39.746008	-104.632177
	11000.00	90.00	270.39	7730.00	2814.25	-1962.79	-2477.95	0.00	1151518.65	3243925.17	39.746009	-104.632533
	11100.00	90.00	270.39	7730.00	2912.18	-1962.10	-2577.95	0.00	1151518.34	3243825.17	39.746011	-104.632889
	11200.00	90.00	270.39	7730.00	3010.10	-1961.42	-2677.95	0.00	1151518.04	3243725.18	39.746013	-104.633244
	11300.00	90.00	270.39	7730.00	3108.03	-1960.74	-2777.95	0.00	1151517.73	3243625.18	39.746015	-104.633600
	11400.00	90.00	270.39	7730.00	3205.96	-1960.06	-2877.94	0.00	1151517.43	3243525.18	39.746017	-104.633956
	11500.00	90.00	270.39	7730.00	3303.89	-1959.37	-2977.94	0.00	1151517.12	3243425.18	39.746019	-104.634311
	11600.00	90.00	270.39	7730.00	3401.82	-1958.69	-3077.94	0.00	1151516.82	3243325.18	39.746020	-104.634667
	11700.00	90.00	270.39	7730.00	3499.75	-1958.01	-3177.94	0.00	1151516.51	3243225.18	39.746022	-104.635022
	11800.00	90.00	270.39	7730.00	3597.68	-1957.32	-3277.93	0.00	1151516.21	3243125.18	39.746024	-104.635378
	11900.00	90.00	270.39	7730.00	3695.61	-1956.64	-3377.93	0.00	1151515.90	3243025.18	39.746026	-104.635734
	12000.00	90.00	270.39	7730.00	3793.54	-1955.96	-3477.93	0.00	1151515.59	3242925.18	39.746028	-104.636089
	12100.00	90.00	270.39	7730.00	3891.47	-1955.27	-3577.93	0.00	1151515.29	3242825.19	39.746030	-104.636445
	12200.00	90.00	270.39	7730.00	3989.40	-1954.59	-3677.92	0.00	1151514.98	3242725.19	39.746031	-104.636800
	12300.00	90.00	270.39	7730.00	4087.33	-1953.91	-3777.92	0.00	1151514.68	3242625.19	39.746033	-104.637156
	12400.00	90.00	270.39	7730.00	4185.25	-1953.23	-3877.92	0.00	1151514.37	3242525.19	39.746035	-104.637512
	12500.00	90.00	270.39	7730.00	4283.18	-1952.54	-3977.92	0.00	1151514.07	3242425.19	39.746037	-104.637867
	12600.00	90.00	270.39	7730.00	4381.11	-1951.86	-4077.92	0.00	1151513.76	3242325.19	39.746039	-104.638223
	12700.00	90.00	270.39	7730.00	4479.04	-1951.18	-4177.91	0.00	1151513.46	3242225.19	39.746041	-104.638579
	12800.00	90.00	270.39	7730.00	4576.97	-1950.49	-4277.91	0.00	1151513.15	3242125.19	39.746042	-104.638934
	12900.00	90.00	270.39	7730.00	4674.90	-1949.81	-4377.91	0.00	1151512.85	3242025.20	39.746044	-104.639290
	13000.00	90.00	270.39	7730.00	4772.83	-1949.13	-4477.91	0.00	1151512.54	3241925.20	39.746046	-104.639645
	13100.00	90.00	270.39	7730.00	4870.76	-1948.45	-4577.90	0.00	1151512.24	3241825.20	39.746048	-104.640001
	13200.00	90.00	270.39	7730.00	4968.69	-1947.76	-4677.90	0.00	1151511.93	3241725.20	39.746050	-104.640357
	13300.00	90.00	270.39	7730.00	5066.62	-1947.08	-4777.90	0.00	1151511.63	3241625.20	39.746052	-104.640712
	13400.00	90.00	270.39	7730.00	5164.55	-1946.40	-4877.90	0.00	1151511.32	3241525.20	39.746053	-104.641068
	13500.00	90.00	270.39	7730.00	5262.48	-1945.71	-4977.89	0.00	1151511.02	3241425.20	39.746055	-104.641423
	13600.00	90.00	270.39	7730.00	5360.40	-1945.03	-5077.89	0.00	1151510.71	3241325.20	39.746057	-104.641779
	13700.00	90.00	270.39	7730.00	5458.33	-1944.35	-5177.89	0.00	1151510.41	3241225.21	39.746059	-104.642135
	13800.00	90.00	270.39	7730.00	5556.26	-1943.67	-5277.89	0.00	1151510.10	3241125.21	39.746061	-104.642490
	13900.00	90.00	270.39	7730.00	5654.19	-1942.98	-5377.89	0.00	1151509.79	3241025.21	39.746063	-104.642846
	14000.00	90.00	270.39	7730.00	5752.12	-1942.30	-5477.88	0.00	1151509.49	3240925.21	39.746064	-104.643201
	14100.00	90.00	270.39	7730.00	5850.05	-1941.62	-5577.88	0.00	1151509.18	3240825.21	39.746066	-104.643557
	14200.00	90.00	270.39	7730.00	5947.98	-1940.93	-5677.88	0.00	1151508.88	3240725.21	39.746068	-104.643913
	14300.00	90.00	270.39	7730.00	6045.91	-1940.25	-5777.88	0.00	1151508.57	3240625.21	39.746070	-104.644268
	14400.00	90.00	270.39	7730.00	6143.84	-1939.57	-5877.87	0.00	1151508.27	3240525.21	39.746072	-104.644624
	14500.00	90.00	270.39	7730.00	6241.77	-1938.88	-5977.87	0.00	1151507.96	3240425.21	39.746073	-104.644980
	14600.00	90.00	270.39	7730.00	6339.70	-1938.20	-6077.87	0.00	1151507.66	3240325.22	39.746075	-104.645335
	14700.00	90.00	270.39	7730.00	6437.63	-1937.52	-6177.87	0.00	1151507.35	3240225.22	39.746077	-104.645691
	14800.00	90.00	270.39	7730.00	6535.55	-1936.84	-6277.86	0.00	1151507.05	3240125.22	39.746079	-104.646046
	14900.00</											

Comments	MD (ft)	Incl (°)	Azim True (°)	TVD (ft)	VSEC (ft)	NS (ft)	EW (ft)	DLS (°/100ft)	Northing (ftUS)	Easting (ftUS)	Latitude (°)	Longitude (°)
	18000.00	90.00	270.39	7730.00	9669.29	-1914.98	-9477.79	0.00	1151497.28	3236925.26	39.746136	-104.657426
	18100.00	90.00	270.39	7730.00	9767.22	-1914.30	-9577.79	0.00	1151496.97	3236825.26	39.746138	-104.657782
Reserve 3-65 35-34 3BH BHL	18111.36	90.00	270.39	7730.00	9778.35	-1914.22	-9589.15	0.00	1151496.94	3236813.89	39.746138	-104.657822

Survey Type: Def Plan

Survey Error Model: ISCWSA Rev 0 \*\*\* 3-D 95.000% Confidence 2.7955 sigma  
Survey Program:

Description	Part	MD From (ft)	MD To (ft)	EOU Freq (ft)	Hole Size Casing Diameter (in)	Expected Max Inclination (deg)	Survey Tool Type	Borehole / Survey
	1	0.000	28.000	1/100.000	13.500	9.625	NAL_MWD-NON_SLB-Depth Only	Original Hole / Reserve 3-65 35-34 3BH Plan #1
	1	28.000	2000.000	1/100.000	13.500	9.625	NAL_MWD-NON_SLB	Original Hole / Reserve 3-65 35-34 3BH Plan #1
	1	2000.000	18111.364	1/100.000	8.500	5.500	NAL_MWD_PLUS_0.5_DEG	Original Hole / Reserve 3-65 35-34 3BH Plan #1