



Crestone Peak Resources

Schlumberger

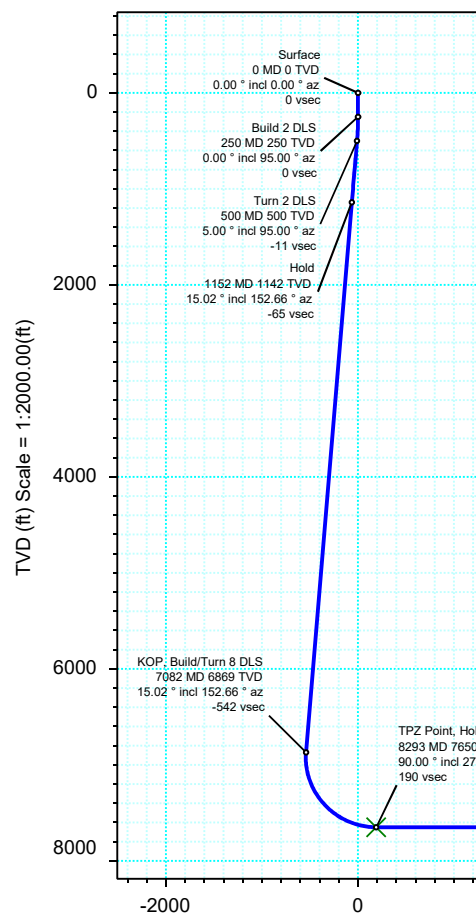
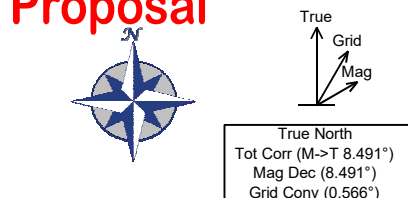
Plan 1

Borehole:	Well:	Field:	Structure:
Original Hole	Reserve 3-65 35-34 2EH	CO, Adams County (NAD 83 NZ)	Crestone Peak 35-03S-65W (Reserve Pad)

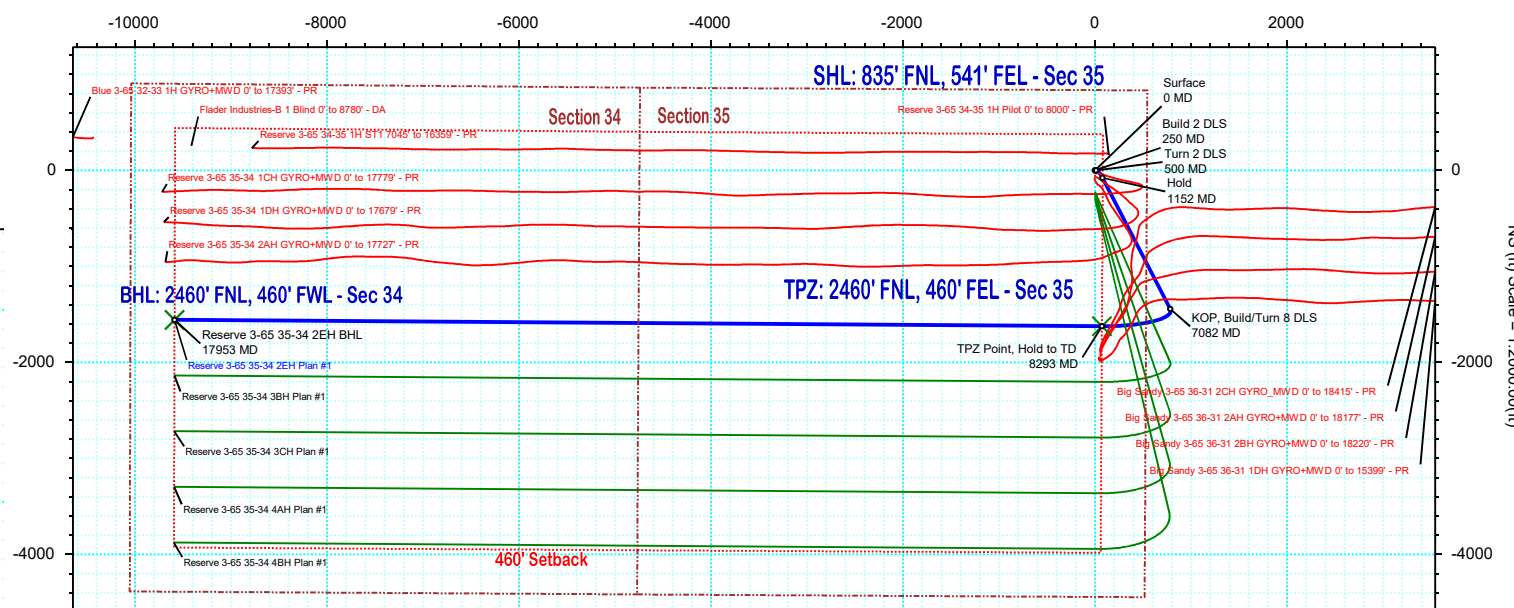
Gravity & Magnetic Parameters			Surface Location			Miscellaneous		
Model:	Hdgm 2020	Dip: 66.335°	Date:	14-May-2020	NAD83 Colorado State Plane, Northern Zone, US Feet	Lat: N 39 45 7.25	Northing:	1153729.82ftUS
MagDec:	8.491°	FS: 51582.706nT	Gravity FS:	998.932mgn (9.80665 Based)	Grid Conv: 0.5662°	Lon: W 104 37 25.40	Easting:	3246381.38ftUS
						Scale Fact:	0.99999448	
						Slot:	Reserve 3-65 35-34 2EH	TVD Ref: KB 28ft(5533.8ft above MSL)
						Plan:	Reserve 3-65 35-34 2EH Plan #1	

Proposal

EW (ft) Scale = 1:2000.00(ft)



Vertical Section (ft) Azim = 260.77° Scale = 1:2000.00(ft) Origin = 0N/-S, 0E/-W



Surface Location								
Northing: 1153729.82447682			Easting: 3246381.37655317			VSec Azimuth: 260.77		
Target Description		Grid Coord		Local Coord				
Target Name	Latitude	Longitude	Northing	Easting	TVD	VSec	N(+)/S(-)	E(+)/W(-)
Reserve Pad Sec 35-34 - 460' SB	N 39 45 7.25	W 104 37 25.40	1153729.82	3246381.38	5533.80	0.00	0.00	0.00
Reserve Pad Sec 35-34	N 39 45 7.25	W 104 37 25.40	1153729.82	3246381.38	5533.80	0.00	0.00	0.00
Reserve 3-65 35-34 2EH BHL	N 39 44 51.82	W 104 39 28.14	1152076.47	3236809.52	7650.00	9713.68	-1558.69	-9587.80
Reserve 3-65 35-34 2EH TPZ	N 39 44 51.19	W 104 37 24.48	1152106.34	3246469.13	7650.00	189.86	-1624.29	71.70

Critical Points								
Critical Point	MD	INCL	AZIM	TVD	VSEC	N(+)/S(-)	E(+)/W(-)	DLS
Surface	0.00	0.00	0.00	0.00	0.00	0.00	0.00	
Build 2 DLS	250.00	0.00	95.00	250.00	0.00	0.00	0.00	0.00
Turn 2 DLS	500.00	5.00	95.00	499.68	-10.57	-0.95	10.86	2.00
Hold	1151.51	15.02	152.66	1141.60	-64.55	-78.74	78.20	2.00
KOP, Build/Turn 8 DLS	7081.62	15.02	152.66	6869.17	-542.10	-1443.69	783.92	0.00
TPZ Point, Hold to TD	8293.18	90.00	270.39	7650.00	189.86	-1624.29	71.70	8.00
Reserve 3-65 35-34 2EH BHL	17952.91	90.00	270.39	7650.00	9713.68	-1558.69	-9587.80	0.00

Reserve 3-65 35-34 2EH Plan #1 Proposal Geodetic Report

(Def Plan)

Report Date: May 14, 2020 - 02:47 PM
Client: Crestone Peak Resources
Field: CO, Adams County (NAD 83 NZ)
Structure / Slot: Crestone Peak 35-03S-65W (Reserve Pad) / Reserve 3-65 35-34 2EH
Well: Reserve 3-65 35-34 2EH
Borehole: Original Hole
UWI / API#: Unknown / Unknown
Survey Name: Reserve 3-65 35-34 2EH Plan #1
Survey Date: March 09, 2020
Tort / AHD / DDI / ERD Ratio: 114.955 ° / 12095.871 ft / 6.514 / 1.581
Coordinate Reference System: NAD83 Colorado State Plane, Northern Zone, US Feet
Location Lat / Long: N 39° 45' 7.24680", W 104° 37' 25.39560"
Location Grid N/E Y/X: N 1153729.824 ftUS, E 3246381.377 ftUS
CRS Grid Convergence Angle: 0.5662 °
Grid Scale Factor: 0.99999448
Version / Patch: 2.10.787.0

Survey / DLS Computation: Minimum Curvature / Lubinski
Vertical Section Azimuth: 260.766 ° (True North)
Vertical Section Origin: 0.000 ft, 0.000 ft
TVD Reference Datum: KB 28ft
TVD Reference Elevation: 5533.800 ft above MSL
Seabed / Ground Elevation: 5505.800 ft above MSL
Magnetic Declination: 8.491 °
Total Gravity Field Strength: 998.9324mgn (9.80665 Based)
Gravity Model: GARM
Total Magnetic Field Strength: 51582.706 nT
Magnetic Dip Angle: 66.335 °
Declination Date: May 14, 2020
Magnetic Declination Model: HDGM 2020
North Reference: True North
Grid Convergence Used: 0.0000 °
Total Corr Mag North→True North: 8.4909 °
Local Coord Referenced To: Well Head

Comments	MD (ft)	Incl (°)	Azim True (°)	TVD (ft)	VSEC (ft)	NS (ft)	EW (ft)	DLS (°/100ft)	Northing (ftUS)	Easting (ftUS)	Latitude (°)	Longitude (°)
Surface	0.00	0.00	0.00	0.00	0.00	0.00	0.00	N/A	1153729.82	3246381.38	39.752013	-104.623721
	100.00	0.00	95.00	100.00	0.00	0.00	0.00	0.00	1153729.82	3246381.38	39.752013	-104.623721
	200.00	0.00	95.00	200.00	0.00	0.00	0.00	0.00	1153729.82	3246381.38	39.752013	-104.623721
Build 2 DLS	250.00	0.00	95.00	250.00	0.00	0.00	0.00	0.00	1153729.82	3246381.38	39.752013	-104.623721
	300.00	1.00	95.00	300.00	-0.42	-0.04	0.43	2.00	1153729.79	3246381.81	39.752013	-104.623719
	400.00	3.00	95.00	399.93	-3.81	-0.34	3.91	2.00	1153729.52	3246385.29	39.752012	-104.623707
Turn 2 DLS	500.00	5.00	95.00	499.68	-10.57	-0.95	10.86	2.00	1153728.98	3246392.25	39.752010	-104.623682
	600.00	5.81	114.55	599.25	-19.00	-3.43	19.81	2.00	1153726.59	3246401.22	39.752004	-104.623651
	700.00	7.11	128.19	698.61	-27.39	-9.36	29.28	2.00	1153720.75	3246410.74	39.751987	-104.623617
	800.00	8.68	137.29	797.67	-35.74	-18.73	39.26	2.00	1153711.48	3246420.81	39.751962	-104.623581
	900.00	10.39	143.52	896.29	-44.03	-31.53	49.73	2.00	1153698.79	3246431.42	39.751926	-104.623544
	1000.00	12.19	147.97	994.35	-52.25	-47.73	60.70	2.00	1153682.70	3246442.54	39.751882	-104.623505
	1100.00	14.05	151.27	1091.73	-60.39	-67.33	72.13	2.00	1153663.21	3246454.17	39.751828	-104.623464
Hold	1151.51	15.02	152.66	1141.60	-64.55	-78.74	78.20	2.00	1153651.86	3246460.35	39.751797	-104.623443
	1200.00	15.02	152.66	1188.43	-68.46	-89.90	83.97	0.00	1153640.76	3246466.23	39.751766	-104.623422
	1300.00	15.02	152.66	1285.01	-76.51	-112.92	95.87	0.00	1153617.86	3246478.36	39.751703	-104.623380
	1400.00	15.02	152.66	1381.60	-84.56	-135.94	107.77	0.00	1153594.96	3246490.49	39.751640	-104.623338
	1500.00	15.02	152.66	1478.18	-92.62	-158.95	119.67	0.00	1153572.06	3246502.61	39.751577	-104.623295
	1600.00	15.02	152.66	1574.77	-100.67	-181.97	131.57	0.00	1153549.16	3246514.74	39.751513	-104.623253
	1700.00	15.02	152.66	1671.35	-108.72	-204.99	143.47	0.00	1153526.27	3246526.87	39.751450	-104.623211
	1800.00	15.02	152.66	1767.94	-116.77	-228.01	155.37	0.00	1153503.37	3246539.00	39.751387	-104.623168
	1900.00	15.02	152.66	1864.52	-124.83	-251.02	167.28	0.00	1153480.47	3246551.12	39.751324	-104.623126
	2000.00	15.02	152.66	1961.11	-132.88	-274.04	179.18	0.00	1153457.57	3246563.25	39.751261	-104.623084
	2100.00	15.02	152.66	2057.69	-140.93	-297.06	191.08	0.00	1153434.67	3246575.38	39.751198	-104.623041
	2200.00	15.02	152.66	2154.28	-148.99	-320.07	202.98	0.00	1153411.77	3246587.51	39.751134	-104.622999
	2300.00	15.02	152.66	2250.86	-157.04	-343.09	214.88	0.00	1153388.88	3246599.63	39.751071	-104.622957
	2400.00	15.02	152.66	2347.44	-165.09	-366.11	226.78	0.00	1153365.98	3246611.76	39.751008	-104.622914
	2500.00	15.02	152.66	2444.03	-173.15	-389.13	238.68	0.00	1153343.08	3246623.89	39.750945	-104.622872
	2600.00	15.02	152.66	2540.61	-181.20	-412.14	250.58	0.00	1153320.18	3246636.01	39.750882	-104.622830
	2700.00	15.02	152.66	2637.20	-189.25	-435.16	262.48	0.00	1153297.28	3246648.14	39.750818	-104.622788
	2800.00	15.02	152.66	2733.78	-197.30	-458.18	274.38	0.00	1153274.38	3246660.27	39.750755	-104.622745
	2900.00	15.02	152.66	2830.37	-205.36	-481.20	286.28	0.00	1153251.48	3246672.40	39.750692	-104.622703
	3000.00	15.02	152.66	2926.95	-213.41	-504.21	298.18	0.00	1153228.59	3246684.52	39.750629	-104.622661
	3100.00	15.02	152.66	3023.54	-221.46	-527.23	310.08	0.00	1153205.69	3246696.65	39.750566	-104.622618
	3200.00	15.02	152.66	3120.12	-229.52	-550.25	321.98	0.00	1153182.79	3246708.78	39.750502	-104.622576
	3300.00	15.02	152.66	3216.71	-237.57	-573.26	333.88	0.00	1153159.89	3246720.91	39.750439	-104.622534
	3400.00	15.02	152.66	3313.29	-245.62	-596.28	345.78	0.00	1153136.99	3246733.03	39.750376	-104.622491
	3500.00	15.02	152.66	3409.88	-253.67	-619.30	357.69	0.00	1153114.09	3246745.16	39.750313	-104.622449
	3600.00	15.02	152.66	3506.46	-261.73	-642.32	369.59	0.00	1153091.20	3246757.29	39.750250	-104.622407
	3700.00	15.02	152.66	3603.04	-269.78	-665.33	381.49	0.00	1153068.30	3246769.42	39.750187	-104.622364
	3800.00	15.02	152.66	3699.63	-277.83	-688.35	393.39	0.00	1153045.40	3246781.54	39.750123	-104.622322
	3900.00	15.02	152.66	3796.21	-285.89	-711.37	405.29	0.00	1153022.50	3246793.67	39.750060	-104.622280
	4000.00	15.02	152.66	3892.80	-293.94	-734.39	417.19	0.00	1152999.60	3246805.80	39.749997	-104.622237
	4100.00	15.02	152.66	3989.38	-301.99	-757.40	429.09	0.00	1152976.70	3246817.93	39.749934	-104.622195
	4200.00	15.02	152.66	4085.97	-310.05	-780.42	440.99	0.00	1152953.81	3246830.05	39.749871	-104.622153
	4300.00	15.02	152.66	4182.55	-318.10	-803.44	452.89	0.00	1152930.91	3246842.18	39.749807	-104.622110
	4400.00	15.02	152.66	4279.14	-326.15	-826.46	464.79	0.00	1152908.01	3246854.31	39.749744	-104.622068
	4500.00	15.02	152.66	4375.72	-334.20	-849.47	476.69	0.00	1152885.11	3246866.44	39.749681	-104.622026
	4600.00	15.02	152.66	4472.31	-342.26	-872.49	488.59	0.00	1152862.21	3246878.56	39.749618	-104.621983
	4700.00	15.02	152.66	4568.89	-350.31	-895.51	500.49	0.00	1152839.31	3246890.69	39.749555	-104.621941
	4800.00	15.02	152.66	4665.47	-358.36	-918.52	512.39	0.00	1152816.41	3246902.82	39.749491	-104.621899
	4900.00	15.02	152.66	4762.06	-366.42	-941.54	524.29	0.00	1152793.52	3246914.94	39.749428	-104.621856
	5000.00	15.02	152.66	4858.64	-374.47	-964.56	536.19	0.00	1152770.62	3246927.07	39.749365	-104.621814
	5100.00	15.02	152.66	4955.23	-382.52	-987.58	548.09	0.00	1152747.72	3246939.20	39.749302	-104.621772
	5200.00	15.02	152.66	5051.81	-390.57	-1010.59	560.00	0.00	1152724.82	3246951.33	39.749239	-104.621729
	5300.00	15.02	152.66	5148.40	-398.63	-1033.61	571.90	0.00	1152701.92	3246963.45	39.749176	-104.621687
	5400.00	15.02	152.66	5244.98	-406.68	-1056.63	583.80	0.00	1152679.02	3246975.58	39.749112	-104.621645
	5500.00	15.02	152.66	5341.57	-414.73	-1079.65	595.70	0.00	1152656.13	3246987.71	39.749049	-104.621602
	5600.00	15.02	152.66	5438.15	-422.79	-1102.66	607.60	0.00	1152633.23	3246999.84	39.748986	-104.621560
	5700.00	15.02	152.66	5534.74	-430.84	-1125.68	619.50	0.00	1152610.33	3247011.96	39.748923	-104.621518
	5800.00	15.02	152.66	5631.32	-438.89	-1148.70	631.40	0.00	1152587.43	3247024.09	39.748860	-104.621476
	5900.00	15.02	152.66	5727.90	-446.95	-1171.72	643.30	0.00	1152564.53	3247036.22	39.748796	-104.621433
	6000.00	15.02	152.66	5824.49	-455.00	-1194.73	655.20	0.00	1152541.63	3247048.35	39.748733	-104.621391
	6100.00	15.02	152.66	5921.07	-463.05	-1217.75	667.10	0.00	1152518.74	3247060.47	39.748670	-104.621349
	6200.00	15.02	152.66	6017.66	-471.10	-1240.77	679.00	0.00	1152495.84	3247072.60	39.748607	-104.621306
	6300.00	15.02	152.66	6114.24	-479.16	-1263.78	690.90	0.00	1152472.94	3247084.73	39.748544	-104.621264
	6400.00	15.02	152.66	6210.83	-487.21	-1286.80	702.80	0.00	1152450.04	3247096.86	39.748480	-104.621222
	6500.00	15.02	152.66	6307.41	-495.26	-1309.82	714.70	0.00	1152427.14	3247108.98	39.748417	-104.621179
	6600.00	15.02	152.66	6404.00	-503.32	-1332.84	726.60	0.00	1152404.24	3247121.11	39.748354	-104.621137
	6700.00	15.02	152.66	6500.58	-511.37	-1355.85	738.50	0.00	1152381.34	3247133.24	39.748291	-104.621095
	6800.00	15.02	152.66	6597.17	-519.42	-1378.87	750.41	0.00	1152358.45	3247145.36	39.748228	-104.621052
	6900.00	15.02	152.66	6693.75	-527.47	-1401.89	762.31	0.00	1152335.55	3247157.49	39.748164	-104.621010

Comments	MD (ft)	Incl (°)	Azim True (°)	TVD (ft)	VSEC (ft)	NS (ft)	EW (ft)	DLS (°/100ft)	Northing (ftUS)	Easting (ftUS)	Latitude (°)	Longitude (°)
	7300.00	16.96	219.25	7080.71	-526.93	-1493.88	776.71	8.00	1152243.70	3247172.80	39.747912	-104.620959
	7400.00	22.72	235.83	7174.81	-498.45	-1516.05	751.46	8.00	1152221.28	3247147.78	39.747851	-104.621049
	7500.00	29.50	245.57	7264.60	-457.12	-1537.12	713.01	8.00	1152199.84	3247109.53	39.747793	-104.621185
	7600.00	36.74	251.84	7348.32	-403.73	-1556.65	662.09	8.00	1152179.80	3247058.81	39.747740	-104.621366
	7700.00	44.21	256.26	7424.35	-339.32	-1574.28	599.71	8.00	1152161.55	3246996.61	39.747691	-104.621588
	7800.00	51.81	259.62	7491.22	-265.15	-1589.67	527.07	8.00	1152145.45	3246924.12	39.747649	-104.621847
	7900.00	59.49	262.34	7547.61	-182.67	-1602.51	445.59	8.00	1152131.81	3246842.77	39.747614	-104.622136
	8000.00	67.22	264.66	7592.43	-93.47	-1612.55	356.85	8.00	1152120.89	3246754.54	39.747586	-104.622452
	8100.00	74.97	266.73	7624.80	0.70	-1619.60	262.59	8.00	1152112.91	3246659.95	39.747567	-104.622787
	8200.00	82.75	268.66	7644.11	98.02	-1623.52	164.63	8.00	1152108.03	3246562.04	39.747556	-104.623136
TPZ Point, Hold to TD	8293.18	90.00	270.39	7650.00	189.86	-1624.29	71.70	8.00	1152106.34	3246469.13	39.747554	-104.623466
	8300.00	90.00	270.39	7650.00	196.59	-1624.24	64.88	0.00	1152106.32	3246462.31	39.747554	-104.623490
	8400.00	90.00	270.39	7650.00	295.18	-1623.56	-35.11	0.00	1152106.01	3246362.31	39.747556	-104.623846
	8500.00	90.00	270.39	7650.00	393.77	-1622.88	-135.11	0.00	1152105.70	3246262.31	39.747558	-104.624201
	8600.00	90.00	270.39	7650.00	492.37	-1622.20	-235.11	0.00	1152105.39	3246162.31	39.747560	-104.624557
	8700.00	90.00	270.39	7650.00	590.96	-1621.52	-335.11	0.00	1152105.08	3246062.31	39.747562	-104.624913
	8800.00	90.00	270.39	7650.00	689.55	-1620.84	-435.10	0.00	1152104.77	3245962.31	39.747563	-104.625268
	8900.00	90.00	270.39	7650.00	788.15	-1620.16	-535.10	0.00	1152104.46	3245862.32	39.747565	-104.625624
	9000.00	90.00	270.39	7650.00	886.74	-1619.49	-635.10	0.00	1152104.15	3245762.32	39.747567	-104.625980
	9100.00	90.00	270.39	7650.00	985.33	-1618.81	-735.10	0.00	1152103.84	3245662.32	39.747569	-104.626335
	9200.00	90.00	270.39	7650.00	1083.92	-1618.13	-835.09	0.00	1152103.54	3245562.32	39.747571	-104.626691
	9300.00	90.00	270.39	7650.00	1182.52	-1617.45	-935.09	0.00	1152103.23	3245462.32	39.747573	-104.627046
	9400.00	90.00	270.39	7650.00	1281.11	-1616.77	-1035.09	0.00	1152102.92	3245362.32	39.747575	-104.627402
	9500.00	90.00	270.39	7650.00	1379.70	-1616.09	-1135.09	0.00	1152102.61	3245262.32	39.747576	-104.627758
	9600.00	90.00	270.39	7650.00	1478.30	-1615.41	-1235.09	0.00	1152102.30	3245162.32	39.747578	-104.628113
	9700.00	90.00	270.39	7650.00	1576.89	-1614.73	-1335.08	0.00	1152101.99	3245062.33	39.747580	-104.628469
	9800.00	90.00	270.39	7650.00	1675.48	-1614.05	-1435.08	0.00	1152101.68	3244962.33	39.747582	-104.628825
	9900.00	90.00	270.39	7650.00	1774.07	-1613.37	-1535.08	0.00	1152101.37	3244862.33	39.747584	-104.629180
	10000.00	90.00	270.39	7650.00	1872.67	-1612.70	-1635.08	0.00	1152101.06	3244762.33	39.747586	-104.629536
	10100.00	90.00	270.39	7650.00	1971.26	-1612.02	-1735.07	0.00	1152100.75	3244662.33	39.747588	-104.629891
	10200.00	90.00	270.39	7650.00	2069.85	-1611.34	-1835.07	0.00	1152100.44	3244562.33	39.747589	-104.630247
	10300.00	90.00	270.39	7650.00	2168.45	-1610.66	-1935.07	0.00	1152100.13	3244462.33	39.747591	-104.630603
	10400.00	90.00	270.39	7650.00	2267.04	-1609.98	-2035.07	0.00	1152099.83	3244362.33	39.747593	-104.630958
	10500.00	90.00	270.39	7650.00	2365.63	-1609.30	-2135.06	0.00	1152099.52	3244262.33	39.747595	-104.631314
	10600.00	90.00	270.39	7650.00	2464.23	-1608.62	-2235.06	0.00	1152099.21	3244162.34	39.747597	-104.631670
	10700.00	90.00	270.39	7650.00	2562.82	-1607.94	-2335.06	0.00	1152098.90	3244062.34	39.747599	-104.632025
	10800.00	90.00	270.39	7650.00	2661.41	-1607.26	-2435.06	0.00	1152098.59	3243962.34	39.747600	-104.632381
	10900.00	90.00	270.39	7650.00	2760.00	-1606.58	-2535.06	0.00	1152098.28	3243862.34	39.747602	-104.632736
	11000.00	90.00	270.39	7650.00	2858.60	-1605.91	-2635.05	0.00	1152097.97	3243762.34	39.747604	-104.633092
	11100.00	90.00	270.39	7650.00	2957.19	-1605.23	-2735.05	0.00	1152097.66	3243662.34	39.747606	-104.633448
	11200.00	90.00	270.39	7650.00	3055.78	-1604.55	-2835.05	0.00	1152097.35	3243562.34	39.747608	-104.633803
	11300.00	90.00	270.39	7650.00	3154.38	-1603.87	-2935.05	0.00	1152097.04	3243462.34	39.747610	-104.634159
	11400.00	90.00	270.39	7650.00	3252.97	-1603.19	-3035.04	0.00	1152096.73	3243362.35	39.747611	-104.634514
	11500.00	90.00	270.39	7650.00	3351.56	-1602.51	-3135.04	0.00	1152096.42	3243262.35	39.747613	-104.634870
	11600.00	90.00	270.39	7650.00	3450.15	-1601.83	-3235.04	0.00	1152096.12	3243162.35	39.747615	-104.635226
	11700.00	90.00	270.39	7650.00	3548.75	-1601.15	-3335.04	0.00	1152095.81	3243062.35	39.747617	-104.635581
	11800.00	90.00	270.39	7650.00	3647.34	-1600.47	-3435.03	0.00	1152095.50	3242962.35	39.747619	-104.635937
	11900.00	90.00	270.39	7650.00	3745.93	-1599.79	-3535.03	0.00	1152095.19	3242862.35	39.747621	-104.636293
	12000.00	90.00	270.39	7650.00	3844.53	-1599.12	-3635.03	0.00	1152094.88	3242762.35	39.747622	-104.636648
	12100.00	90.00	270.39	7650.00	3943.12	-1598.44	-3735.03	0.00	1152094.57	3242662.35	39.747624	-104.637004
	12200.00	90.00	270.39	7650.00	4041.71	-1597.76	-3835.03	0.00	1152094.26	3242562.36	39.747626	-104.637359
	12300.00	90.00	270.39	7650.00	4140.31	-1597.08	-3935.02	0.00	1152093.95	3242462.36	39.747628	-104.637715
	12400.00	90.00	270.39	7650.00	4238.90	-1596.40	-4035.02	0.00	1152093.64	3242362.36	39.747630	-104.638071
	12500.00	90.00	270.39	7650.00	4337.49	-1595.72	-4135.02	0.00	1152093.33	3242262.36	39.747631	-104.638426
	12600.00	90.00	270.39	7650.00	4436.08	-1595.04	-4235.02	0.00	1152093.02	3242162.36	39.747633	-104.638782
	12700.00	90.00	270.39	7650.00	4534.68	-1594.36	-4335.01	0.00	1152092.71	3242062.36	39.747635	-104.639138
	12800.00	90.00	270.39	7650.00	4633.27	-1593.68	-4435.01	0.00	1152092.41	3241962.36	39.747637	-104.639493
	12900.00	90.00	270.39	7650.00	4731.86	-1593.00	-4535.01	0.00	1152092.10	3241862.36	39.747639	-104.639849
	13000.00	90.00	270.39	7650.00	4830.46	-1592.33	-4635.01	0.00	1152091.79	3241762.37	39.747641	-104.640204
	13100.00	90.00	270.39	7650.00	4929.05	-1591.65	-4735.00	0.00	1152091.48	3241662.37	39.747642	-104.640560
	13200.00	90.00	270.39	7650.00	5027.64	-1590.97	-4835.00	0.00	1152091.17	3241562.37	39.747644	-104.640916
	13300.00	90.00	270.39	7650.00	5126.23	-1590.29	-4935.00	0.00	1152090.86	3241462.37	39.747646	-104.641271
	13400.00	90.00	270.39	7650.00	5224.83	-1589.61	-5035.00	0.00	1152090.55	3241362.37	39.747648	-104.641627
	13500.00	90.00	270.39	7650.00	5323.42	-1588.93	-5135.00	0.00	1152090.24	3241262.37	39.747650	-104.641983
	13600.00	90.00	270.39	7650.00	5422.01	-1588.25	-5234.99	0.00	1152089.93	3241162.37	39.747651	-104.642338
	13700.00	90.00	270.39	7650.00	5520.61	-1587.57	-5334.99	0.00	1152089.62	3241062.37	39.747653	-104.642694
	13800.00	90.00	270.39	7650.00	5619.20	-1586.89	-5434.99	0.00	1152089.31	3240962.38	39.747655	-104.643049
	13900.00	90.00	270.39	7650.00	5717.79	-1586.21	-5534.99	0.00	1152089.00	3240862.38	39.747657	-104.643405
	14000.00	90.00	270.39	7650.00	5816.39	-1585.54	-5634.98	0.00	1152088.70	3240762.38	39.747659	-104.643761
	14100.00	90.00	270.39	7650.00	5914.98	-1584.86	-5734.98	0.00	1152088.39	3240662.38	39.747660	-104.644116
	14200.00	90.00	270.39	7650.00	6013.57	-1584.18	-5834.98	0.00	1152088.08	3240562.38	39.747662	-104.644472
	14300.00	90.00	270.39	7650.00	6112.16	-1583.50	-5934.98	0.00	1152087.77	3240462.38	39.747664	-104.644827
	14400.00	90.00	270.39	7650.00	6210.76	-1582.82	-6034.97	0.00	1152087.46	3240362.38	39.747666	-104.645183
	14500.00	90.00	270.39	7650.00	6309.35	-1582.14	-6134.97	0.00	1152087.15	3240262.38	39.747668	-104.645539
	14600.00	90.00	270.39	7650.00	6407.94	-1581.46	-6234.97	0.00	1152086.84	3240162.39	39.747669	-104.645894
	14700.00	90.00	270.39	7650.00	6506.54	-1580.78	-6334.97	0.00	1152086.53	3240062.39	39.747671	-104.646250
	14800.00	90.00	270.39	7650.00	6605.13	-1580.10	-6434.97	0.00	1152086.22	3239962.39	39.747673	-104.646606
	14900.00</											

Comments	MD (ft)	Incl (°)	Azim True (°)	TVD (ft)	VSEC (ft)	NS (ft)	EW (ft)	DLS (°/100ft)	Northing (ftUS)	Easting (ftUS)	Latitude (°)	Longitude (°)
Reserve 3-65 35-34 2EH BHL	17952.91	90.00	270.39	7650.00	9713.68	-1558.69	-9587.80	0.00	1152076.47	3236809.52	39.747729	-104.657818

Survey Type: Def Plan

Survey Error Model: ISCWSA Rev 0 *** 3-D 95.000% Confidence 2.7955 sigma
Survey Program:

Description	Part	MD From (ft)	MD To (ft)	EOU Freq (ft)	Hole Size (in)	Casing Diameter (in)	Expected Max Inclination (deg)	Survey Tool Type	Borehole / Survey
	1	0.000	28.000	1/100.000	13.500	9.625		NAL_MWD-NON_SLB-Depth Only	Original Hole / Reserve 3-65 35-34 2EH Plan #1
	1	28.000	2000.000	1/100.000	13.500	9.625		NAL_MWD-NON_SLB	Original Hole / Reserve 3-65 35-34 2EH Plan #1
	1	2000.000	17952.911	1/100.000	8.500	5.500		NAL_MWD_PLUS_0.5_DEG	Original Hole / Reserve 3-65 35-34 2EH Plan #1