



HighPoint Resources  
Project: Weld County, CO (NAD83)  
Site: Sec 32-T05-R63W Siebring Pad  
Well: Siebring 63-32-4040B  
Wellbore: Wellbore #1  
Design: Wellbore #1 (Siebring 63-32-4040B/Wellbore #1)  
Cade 23

WELL DETAILS: Siebring 63-32-4040B

Ground Elevation:: 4568.30  
RKB Elevation: KB @ 4584.80usft (Cade 23)  
Rig Name: Cade 23

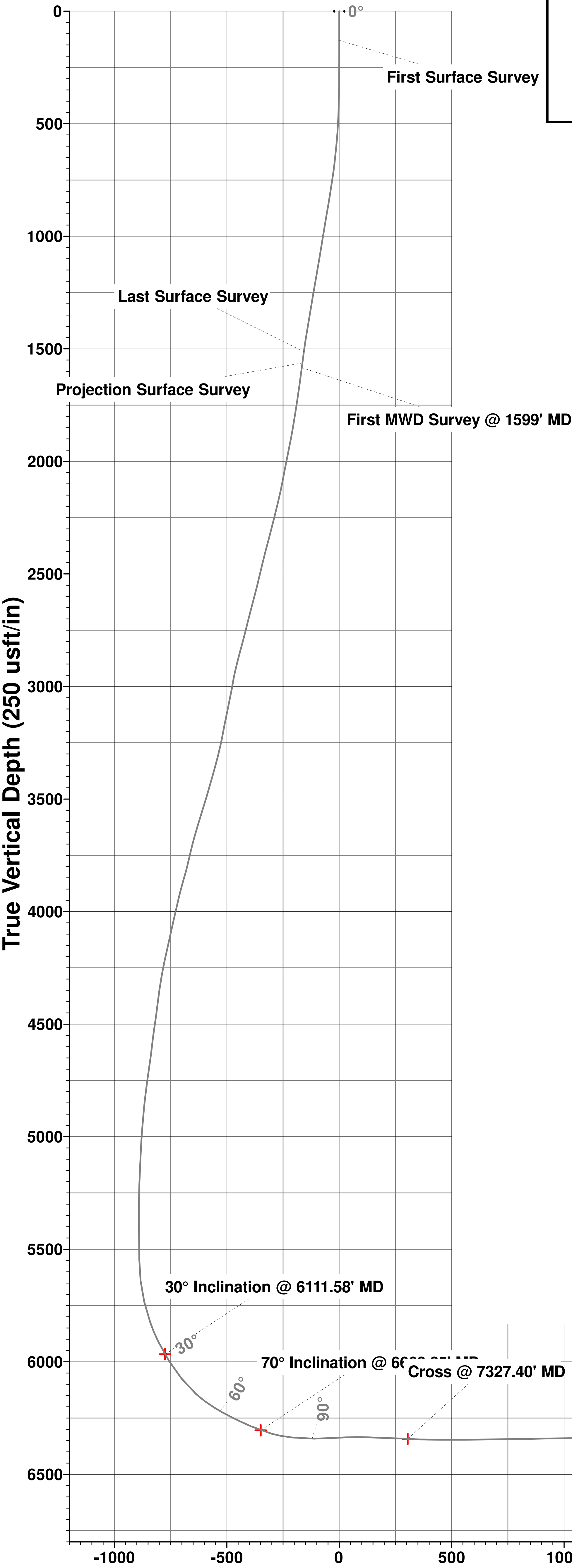


Northing	Easting	Latitude	Longitude
1374447.21	3292195.54	40.356517	-104.451511

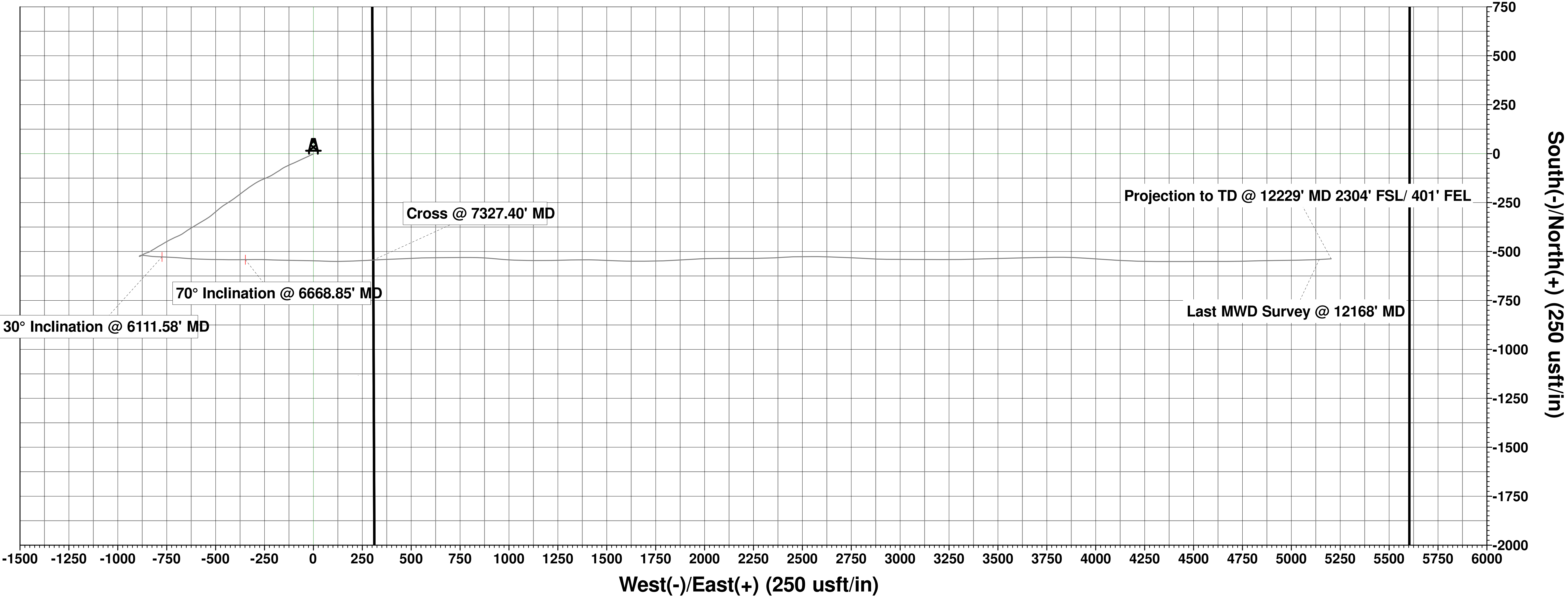
PROJECT DETAILS: Weld County, CO (NAD83)  
Geodetic System: US State Plane 1983  
Datum: North American Datum 1983  
Ellipsoid: GRS 1980  
Zone: Colorado Northern Zone  
System Datum: Mean Sea Level  
Local North: True

ANNOTATIONS

MD	Inc	Azi	TVD	+N/-S	+E/-W	VSect	Departure	Annotation
129.80	0.35	170.51	129.80	-0.39	0.07	0.06	0.40	First Surface Survey
1527.80	9.18	237.13	1513.40	-74.76	-157.01	-157.15	174.67	Last Surface Survey
1577.80	8.93	235.52	1562.77	-79.12	-163.56	-163.71	182.50	Projection Surface Survey
1599.00	8.82	234.81	1583.72	-80.99	-166.24	-166.40	185.81	First MWD Survey @ 1599' MD
6111.58	30.00	92.01	5966.37	-527.41	-773.93	-774.94	1159.08	30° Inclusion @ 6111.58' MD
6668.85	70.00	89.58	6304.33	-541.77	-347.71	-348.75	1585.28	70° Inclusion @ 6668.85' MD
7327.40	87.09	86.71	6342.53	-543.56	306.00	304.96	2238.71	Cross @ 7327.40' MD
12168.00	91.70	86.95	6336.26	-540.52	5143.09	5142.04	7078.46	Last MWD Survey @ 12168' MD
12229.00	91.70	86.95	6334.45	-537.27	5203.98	5202.94	7139.43	Projection to TD @ 12229' MD 2304' FSL/ 401' FEL



Vertical Section at 89.89° (250 usft/in)



**M**azimuths to True North  
Magnetic North: 7.77°

**Magnetic Field**  
Strength: 52109.8nT  
Dip Angle: 66.80°  
Date: 1/15/2020  
Model: IGRF2015

# **HighPoint Resources**

**Weld County, CO (NAD83)**

**Sec 32-T05-R63W Siebring Pad**

**Siebring 63-32-4040B**

**Wellbore #1**

**Design: Wellbore #1**

## **Standard Survey Report**

**16 March, 2020**

# Survey Report

<b>Company:</b>	HighPoint Resources	<b>Local Co-ordinate Reference:</b>	Well Siebring 63-32-4040B
<b>Project:</b>	Weld County, CO (NAD83)	<b>TVD Reference:</b>	KB @ 4584.80usft (Cade 23)
<b>Site:</b>	Sec 32-T05-R63W Siebring Pad	<b>MD Reference:</b>	KB @ 4584.80usft (Cade 23)
<b>Well:</b>	Siebring 63-32-4040B	<b>North Reference:</b>	True
<b>Wellbore:</b>	Wellbore #1	<b>Survey Calculation Method:</b>	Minimum Curvature
<b>Design:</b>	Wellbore #1	<b>Database:</b>	EDM 5000.15 Single User Db

<b>Project</b>	Weld County, CO (NAD83)		
<b>Map System:</b>	US State Plane 1983	<b>System Datum:</b>	Mean Sea Level
<b>Geo Datum:</b>	North American Datum 1983		
<b>Map Zone:</b>	Colorado Northern Zone		

Site		Sec 32-T05-R63W Siebring Pad			
Site Position:		Northing:	1,371,533.71 usft	Latitude:	40.348679
From:	Map	Easting:	3,287,249.45 usft	Longitude:	-104.469379
Position Uncertainty:	0.00 usft	Slot Radius:	13-3/16 "	Grid Convergence:	0.67 °

Well		Siebring 63-32-4040B				
Well Position	+N/-S	0.00 usft	Northing:	1,374,447.21 usft	Latitude:	40.356517
	+E/-W	0.00 usft	Easting:	3,292,195.54 usft	Longitude:	-104.451511
Position Uncertainty		0.00 usft	Wellhead Elevation:	usft	Ground Level:	4,568.30 usft

<b>Wellbore</b>	Wellbore #1				
<b>Magnetics</b>	<b>Model Name</b>	<b>Sample Date</b>	<b>Declination (°)</b>	<b>Dip Angle (°)</b>	<b>Field Strength (nT)</b>
	IGRF2015	1/15/2020	7.77	66.80	52,109.79042047

<b>Design</b>	Wellbore #1				
<b>Audit Notes:</b>					
<b>Version:</b>	1.0	<b>Phase:</b>	ACTUAL	<b>Tie On Depth:</b>	0.00
<b>Vertical Section:</b>	<b>Depth From (TVD) (usft)</b>	<b>+N/-S (usft)</b>	<b>+E/-W (usft)</b>	<b>Direction (°)</b>	
	0.00	0.00	0.00	89.89	

<b>Survey Program</b>	<b>Date</b>	3/16/2020			
<b>From (usft)</b>	<b>To (usft)</b>	<b>Survey (Wellbore)</b>	<b>Tool Name</b>	<b>Description</b>	
129.80	1,577.80	Surface Surveys (Wellbore #1)	MWD	MWD - Standard	
1,599.00	12,229.00	MagVar Corrected Surveys (Wellbore #1)	MWD+HRGM	OWSG MWD + HRGM	

<b>Survey</b>										
<b>Measured Depth (usft)</b>	<b>Inclination (°)</b>	<b>Azimuth (°)</b>	<b>Vertical Depth (usft)</b>	<b>+N/-S (usft)</b>	<b>+E/-W (usft)</b>	<b>Vertical Section (usft)</b>	<b>Dogleg Rate (°/100usft)</b>	<b>Build Rate (°/100usft)</b>	<b>Turn Rate (°/100usft)</b>	
0.00	0.00	0.00	0.00	0.00	0.00	0.00	0.00	0.00	0.00	
129.80	0.35	170.51	129.80	-0.39	0.07	0.06	0.27	0.27	0.00	
<b>First Surface Survey</b>										
216.80	0.22	193.53	216.80	-0.82	0.07	0.07	0.20	-0.15	26.46	
303.80	0.40	257.52	303.80	-1.04	-0.27	-0.27	0.42	0.21	73.55	
390.80	1.54	233.00	390.78	-1.81	-1.50	-1.50	1.37	1.31	-28.18	
478.80	2.90	244.25	478.72	-3.49	-4.45	-4.45	1.62	1.55	12.78	
565.80	5.05	247.76	565.50	-5.90	-9.97	-9.98	2.49	2.47	4.03	
652.80	6.99	243.19	652.02	-9.73	-18.24	-18.26	2.30	2.23	-5.25	
739.80	9.18	244.33	738.15	-15.13	-29.22	-29.25	2.52	2.52	1.31	

# Survey Report

<b>Company:</b>	HighPoint Resources	<b>Local Co-ordinate Reference:</b>	Well Siebring 63-32-4040B
<b>Project:</b>	Weld County, CO (NAD83)	<b>TVD Reference:</b>	KB @ 4584.80usft (Cade 23)
<b>Site:</b>	Sec 32-T05-R63W Siebring Pad	<b>MD Reference:</b>	KB @ 4584.80usft (Cade 23)
<b>Well:</b>	Siebring 63-32-4040B	<b>North Reference:</b>	True
<b>Wellbore:</b>	Wellbore #1	<b>Survey Calculation Method:</b>	Minimum Curvature
<b>Design:</b>	Wellbore #1	<b>Database:</b>	EDM 5000.15 Single User Db

Survey									
Measured Depth (usft)	Inclination (°)	Azimuth (°)	Vertical Depth (usft)	+N/-S (usft)	+E/-W (usft)	Vertical Section (usft)	Dogleg Rate (°/100usft)	Build Rate (°/100usft)	Turn Rate (°/100usft)
827.80	10.02	245.92	824.92	-21.29	-42.54	-42.58	1.00	0.95	1.81
914.80	11.03	245.65	910.45	-27.81	-57.03	-57.09	1.16	1.16	-0.31
1,001.80	9.98	243.81	995.99	-34.57	-71.38	-71.45	1.27	-1.21	-2.11
1,089.80	10.50	245.48	1,082.59	-41.27	-85.52	-85.60	0.68	0.59	1.90
1,176.80	10.81	246.53	1,168.09	-47.80	-100.21	-100.31	0.42	0.36	1.21
1,263.80	10.55	246.80	1,253.58	-54.19	-115.02	-115.12	0.30	-0.30	0.31
1,350.80	10.33	243.98	1,339.14	-60.75	-129.35	-129.46	0.64	-0.25	-3.24
1,438.80	10.46	245.39	1,425.70	-67.54	-143.70	-143.83	0.32	0.15	1.60
1,527.80	9.18	237.13	1,513.40	-74.76	-157.01	-157.15	2.14	-1.44	-9.28
Last Surface Survey									
1,577.80	8.93	235.52	1,562.77	-79.12	-163.56	-163.71	0.72	-0.51	-3.22
Projection Surface Survey									
1,599.00	8.82	234.81	1,583.72	-80.99	-166.24	-166.40	0.72	-0.50	-3.35
First MWD Survey @ 1599' MD									
1,675.00	9.79	237.71	1,658.72	-87.80	-176.47	-176.63	1.42	1.28	3.82
1,770.00	9.99	237.88	1,752.31	-96.49	-190.27	-190.46	0.21	0.21	0.18
1,865.00	11.33	238.47	1,845.67	-105.75	-205.21	-205.41	1.42	1.41	0.62
1,960.00	12.54	242.91	1,938.61	-115.33	-222.34	-222.56	1.60	1.27	4.67
2,054.00	12.40	246.98	2,030.40	-123.92	-240.72	-240.95	0.95	-0.15	4.33
2,130.00	11.52	246.90	2,104.75	-130.09	-255.21	-255.46	1.16	-1.16	-0.11
2,149.00	13.16	248.36	2,123.31	-131.63	-258.96	-259.22	8.79	8.63	7.68
2,244.00	15.46	241.52	2,215.36	-141.66	-280.15	-280.42	3.00	2.42	-7.20
2,276.00	16.40	241.13	2,246.13	-145.88	-287.86	-288.13	2.96	2.94	-1.22
2,339.00	16.76	237.24	2,306.51	-155.09	-303.28	-303.58	1.85	0.57	-6.17
2,434.00	17.93	234.95	2,397.19	-170.90	-326.77	-327.10	1.43	1.23	-2.41
2,528.00	16.02	232.83	2,487.09	-187.05	-348.96	-349.32	2.14	-2.03	-2.26
2,624.00	18.04	233.02	2,578.88	-203.99	-371.39	-371.78	2.10	2.10	0.20
2,718.00	18.20	232.28	2,668.22	-221.73	-394.63	-395.05	0.30	0.17	-0.79
2,813.00	16.76	236.35	2,758.83	-238.40	-417.77	-418.22	1.99	-1.52	4.28
2,908.00	17.88	238.52	2,849.52	-253.60	-441.61	-442.09	1.36	1.18	2.28
3,003.00	14.90	234.55	2,940.66	-268.31	-464.00	-464.52	3.35	-3.14	-4.18
3,059.00	12.16	231.72	2,995.10	-276.14	-474.50	-475.03	5.03	-4.89	-5.05
3,098.00	14.72	230.55	3,033.03	-281.83	-481.55	-482.09	6.60	6.56	-3.00
3,194.00	15.19	229.72	3,125.77	-297.71	-500.56	-501.13	0.54	0.49	-0.86
3,290.00	13.73	229.96	3,218.73	-313.17	-518.88	-519.48	1.52	-1.52	0.25
3,385.00	17.05	236.56	3,310.32	-328.11	-539.14	-539.77	3.95	3.49	6.95
3,480.00	18.13	239.98	3,400.88	-343.18	-563.56	-564.22	1.57	1.14	3.60
3,576.00	19.06	239.41	3,491.87	-358.63	-589.99	-590.68	0.99	0.97	-0.59
3,671.00	20.25	238.67	3,581.33	-375.07	-617.39	-618.10	1.28	1.25	-0.78
3,766.00	18.16	236.70	3,671.04	-391.75	-643.81	-644.56	2.30	-2.20	-2.07
3,861.00	15.43	234.65	3,761.98	-407.19	-666.49	-667.27	2.94	-2.87	-2.16
3,956.00	17.55	247.17	3,853.09	-420.07	-690.01	-690.82	4.34	2.23	13.18
4,052.00	14.75	244.37	3,945.30	-430.97	-714.37	-715.20	3.03	-2.92	-2.92
4,147.00	13.98	242.36	4,037.33	-441.53	-735.44	-736.29	0.97	-0.81	-2.12

# Survey Report

<b>Company:</b>	HighPoint Resources	<b>Local Co-ordinate Reference:</b>	Well Siebring 63-32-4040B
<b>Project:</b>	Weld County, CO (NAD83)	<b>TVD Reference:</b>	KB @ 4584.80usft (Cade 23)
<b>Site:</b>	Sec 32-T05-R63W Siebring Pad	<b>MD Reference:</b>	KB @ 4584.80usft (Cade 23)
<b>Well:</b>	Siebring 63-32-4040B	<b>North Reference:</b>	True
<b>Wellbore:</b>	Wellbore #1	<b>Survey Calculation Method:</b>	Minimum Curvature
<b>Design:</b>	Wellbore #1	<b>Database:</b>	EDM 5000.15 Single User Db

Survey									
Measured Depth (usft)	Inclination (°)	Azimuth (°)	Vertical Depth (usft)	+N/-S (usft)	+E/-W (usft)	Vertical Section (usft)	Dogleg Rate (°/100usft)	Build Rate (°/100usft)	Turn Rate (°/100usft)
4,242.00	14.66	239.79	4,129.38	-452.90	-756.00	-756.87	0.98	0.72	-2.71
4,337.00	13.72	240.42	4,221.48	-464.51	-776.19	-777.08	1.00	-0.99	0.66
4,432.00	10.44	239.48	4,314.36	-474.44	-793.40	-794.31	3.46	-3.45	-0.99
4,527.00	8.32	236.23	4,408.09	-482.64	-806.53	-807.46	2.30	-2.23	-3.42
4,622.00	9.60	240.77	4,501.93	-490.33	-819.16	-820.10	1.54	1.35	4.78
4,717.00	7.65	236.31	4,595.85	-497.70	-831.34	-832.29	2.17	-2.05	-4.69
4,813.00	9.28	250.53	4,690.81	-503.83	-843.95	-844.92	2.75	1.70	14.81
4,908.00	7.74	248.92	4,784.76	-508.68	-857.14	-858.12	1.64	-1.62	-1.69
5,003.00	5.98	243.70	4,879.08	-513.18	-867.55	-868.53	1.96	-1.85	-5.49
5,097.00	5.15	240.97	4,972.63	-517.39	-875.63	-876.62	0.93	-0.88	-2.90
5,193.00	3.39	229.97	5,068.37	-521.31	-881.57	-882.57	2.01	-1.83	-11.46
5,288.00	2.76	243.19	5,163.23	-524.15	-885.76	-886.77	0.99	-0.66	13.92
5,383.00	1.30	269.19	5,258.17	-525.19	-888.88	-889.89	1.78	-1.54	27.37
5,479.00	0.75	19.54	5,354.16	-524.62	-889.76	-890.77	1.78	-0.57	114.95
5,575.00	1.14	19.84	5,450.15	-523.13	-889.23	-890.23	0.41	0.41	0.31
5,669.00	1.34	38.01	5,544.12	-521.38	-888.23	-889.23	0.47	0.21	19.33
5,765.00	6.26	81.41	5,639.90	-519.71	-882.36	-883.36	5.59	5.13	45.21
5,860.00	13.52	94.98	5,733.43	-519.91	-866.15	-867.15	7.97	7.64	14.28
5,955.00	19.37	98.39	5,824.51	-523.17	-839.48	-840.48	6.24	6.16	3.59
6,000.00	22.49	95.03	5,866.54	-525.01	-823.52	-824.53	7.43	6.93	-7.47
6,050.00	26.26	92.36	5,912.07	-526.31	-802.93	-803.94	7.85	7.54	-5.34
6,111.58	30.00	92.01	5,966.37	-527.41	-773.93	-774.94	6.08	6.07	-0.57
30° Inclination @ 6111.58' MD									
6,146.00	32.09	91.85	5,995.86	-528.01	-756.19	-757.20	6.08	6.07	-0.47
6,242.00	38.87	94.21	6,073.99	-531.05	-700.59	-701.61	7.20	7.06	2.46
6,337.00	47.59	94.27	6,143.14	-535.86	-635.77	-636.79	9.18	9.18	0.06
6,387.00	53.89	92.59	6,174.77	-538.14	-597.14	-598.17	12.86	12.60	-3.36
6,433.00	57.66	91.29	6,200.64	-539.42	-559.14	-560.17	8.52	8.20	-2.83
6,478.00	60.48	91.23	6,223.76	-540.27	-520.55	-521.58	6.27	6.27	-0.13
6,528.00	63.93	91.00	6,247.08	-541.13	-476.33	-477.37	6.91	6.90	-0.46
6,574.00	64.92	90.32	6,266.93	-541.61	-434.84	-435.88	2.53	2.15	-1.48
6,623.00	66.17	90.26	6,287.22	-541.83	-390.24	-391.28	2.55	2.55	-0.12
6,668.85	70.00	89.58	6,304.33	-541.77	-347.71	-348.75	8.46	8.35	-1.48
70° Inclination @ 6668.85' MD									
6,719.00	74.19	88.88	6,319.74	-541.13	-300.01	-301.04	8.46	8.36	-1.40
6,759.00	80.03	91.37	6,328.66	-541.22	-261.03	-262.07	15.81	14.60	6.23
6,814.00	83.36	92.16	6,336.61	-542.90	-206.65	-207.69	6.22	6.05	1.44
6,909.00	90.54	90.68	6,341.66	-545.25	-111.87	-112.92	7.72	7.56	-1.56
7,004.00	93.49	91.10	6,338.32	-546.72	-16.95	-18.00	3.14	3.11	0.44
7,051.00	92.41	92.52	6,335.90	-548.20	29.96	28.91	3.79	-2.30	3.02
7,098.00	90.68	91.68	6,334.63	-549.92	76.91	75.85	4.09	-3.68	-1.79
7,145.00	87.77	89.26	6,335.27	-550.31	123.89	122.84	8.05	-6.19	-5.15
7,193.00	87.43	88.47	6,337.28	-549.36	171.84	170.79	1.79	-0.71	-1.65

# Survey Report

<b>Company:</b>	HighPoint Resources	<b>Local Co-ordinate Reference:</b>	Well Siebring 63-32-4040B
<b>Project:</b>	Weld County, CO (NAD83)	<b>TVD Reference:</b>	KB @ 4584.80usft (Cade 23)
<b>Site:</b>	Sec 32-T05-R63W Siebring Pad	<b>MD Reference:</b>	KB @ 4584.80usft (Cade 23)
<b>Well:</b>	Siebring 63-32-4040B	<b>North Reference:</b>	True
<b>Wellbore:</b>	Wellbore #1	<b>Survey Calculation Method:</b>	Minimum Curvature
<b>Design:</b>	Wellbore #1	<b>Database:</b>	EDM 5000.15 Single User Db

Survey									
Measured Depth (usft)	Inclination (°)	Azimuth (°)	Vertical Depth (usft)	+N/-S (usft)	+E/-W (usft)	Vertical Section (usft)	Dogleg Rate (°/100usft)	Build Rate (°/100usft)	Turn Rate (°/100usft)
7,225.00	88.07	88.14	6,338.54	-548.41	203.80	202.75	2.25	2.00	-1.03
7,289.00	87.83	86.96	6,340.82	-545.68	267.70	266.65	1.88	-0.38	-1.84
7,327.40	87.09	86.71	6,342.53	-543.56	306.00	304.96	2.05	-1.94	-0.66
<b>Cross @ 7327.40' MD</b>									
7,336.00	86.92	86.65	6,342.98	-543.06	314.58	313.53	2.05	-1.94	-0.66
7,385.00	88.26	87.60	6,345.04	-540.61	363.47	362.43	3.35	2.73	1.94
7,416.00	89.38	88.00	6,345.68	-539.42	394.44	393.41	3.84	3.61	1.29
7,480.00	89.35	87.01	6,346.39	-536.63	458.38	457.35	1.55	-0.05	-1.55
7,575.00	90.23	88.07	6,346.73	-532.56	553.29	552.26	1.45	0.93	1.12
7,669.00	91.73	90.38	6,345.13	-531.28	647.25	646.23	2.93	1.60	2.46
7,764.00	89.96	88.90	6,343.72	-530.69	742.24	741.22	2.43	-1.86	-1.56
7,859.00	91.01	91.52	6,342.92	-531.03	837.22	836.20	2.97	1.11	2.76
7,955.00	91.84	95.71	6,340.53	-537.08	932.98	931.95	4.45	0.86	4.36
8,050.00	89.17	92.35	6,339.69	-543.76	1,027.72	1,026.67	4.52	-2.81	-3.54
8,146.00	88.03	90.04	6,342.04	-545.76	1,123.66	1,122.61	2.68	-1.19	-2.41
8,241.00	89.17	89.51	6,344.36	-545.39	1,218.63	1,217.58	1.32	1.20	-0.56
8,337.00	88.84	87.55	6,346.03	-542.92	1,314.58	1,313.53	2.07	-0.34	-2.04
8,431.00	90.14	91.44	6,346.87	-542.10	1,408.55	1,407.51	4.36	1.38	4.14
8,526.00	89.15	92.65	6,347.45	-545.49	1,503.49	1,502.44	1.65	-1.04	1.27
8,621.00	87.57	91.35	6,350.17	-548.80	1,598.38	1,597.33	2.15	-1.66	-1.37
8,716.00	88.57	89.49	6,353.37	-549.50	1,693.32	1,692.26	2.22	1.05	-1.96
8,811.00	90.40	88.14	6,354.23	-547.53	1,788.29	1,787.24	2.39	1.93	-1.42
8,906.00	89.26	86.07	6,354.51	-542.73	1,883.16	1,882.12	2.49	-1.20	-2.18
9,002.00	89.99	87.32	6,355.14	-537.20	1,979.00	1,977.96	1.51	0.76	1.30
9,034.00	90.86	88.86	6,354.90	-536.13	2,010.98	2,009.95	5.53	2.72	4.81
9,097.00	90.14	89.19	6,354.35	-535.06	2,073.97	2,072.94	1.26	-1.14	0.52
9,191.00	89.79	90.33	6,354.41	-534.67	2,167.97	2,166.93	1.27	-0.37	1.21
9,287.00	90.24	89.94	6,354.38	-534.89	2,263.96	2,262.93	0.62	0.47	-0.41
9,382.00	90.57	86.98	6,353.71	-532.34	2,358.92	2,357.89	3.14	0.35	-3.12
9,427.00	89.89	85.13	6,353.53	-529.25	2,403.81	2,402.79	4.38	-1.51	-4.11
9,477.00	90.94	89.18	6,353.17	-526.76	2,453.73	2,452.72	8.37	2.10	8.10
9,572.00	90.66	89.81	6,351.84	-525.93	2,548.72	2,547.71	0.73	-0.29	0.66
9,668.00	91.70	92.11	6,349.86	-527.53	2,644.68	2,643.66	2.63	1.08	2.40
9,763.00	90.71	92.38	6,347.87	-531.25	2,739.58	2,738.56	1.08	-1.04	0.28
9,858.00	91.35	93.45	6,346.16	-536.09	2,834.44	2,833.41	1.31	0.67	1.13
9,925.00	89.54	91.47	6,345.64	-538.96	2,901.37	2,900.33	4.00	-2.70	-2.96
9,954.00	89.41	90.83	6,345.90	-539.54	2,930.37	2,929.33	2.25	-0.45	-2.21
10,048.00	87.87	90.00	6,348.13	-540.22	3,024.33	3,023.29	1.86	-1.64	-0.88
10,095.00	89.18	90.11	6,349.34	-540.27	3,071.32	3,070.27	2.80	2.79	0.23
10,144.00	88.31	89.89	6,350.42	-540.27	3,120.30	3,119.26	1.83	-1.78	-0.45
10,238.00	89.37	90.70	6,352.32	-540.75	3,214.28	3,213.24	1.42	1.13	0.86
10,334.00	90.46	89.03	6,352.46	-540.53	3,310.28	3,309.23	2.08	1.14	-1.74
10,429.00	92.20	87.95	6,350.26	-538.02	3,405.21	3,404.17	2.16	1.83	-1.14
10,524.00	91.23	88.75	6,347.41	-535.29	3,500.13	3,499.10	1.32	-1.02	0.84

# Survey Report

<b>Company:</b>	HighPoint Resources	<b>Local Co-ordinate Reference:</b>	Well Siebring 63-32-4040B
<b>Project:</b>	Weld County, CO (NAD83)	<b>TVD Reference:</b>	KB @ 4584.80usft (Cade 23)
<b>Site:</b>	Sec 32-T05-R63W Siebring Pad	<b>MD Reference:</b>	KB @ 4584.80usft (Cade 23)
<b>Well:</b>	Siebring 63-32-4040B	<b>North Reference:</b>	True
<b>Wellbore:</b>	Wellbore #1	<b>Survey Calculation Method:</b>	Minimum Curvature
<b>Design:</b>	Wellbore #1	<b>Database:</b>	EDM 5000.15 Single User Db

Survey										
Measured Depth (usft)	Inclination (°)	Azimuth (°)	Vertical Depth (usft)	+N/-S (usft)	+E/-W (usft)	Vertical Section (usft)	Dogleg Rate (°/100usft)	Build Rate (°/100usft)	Turn Rate (°/100usft)	
10,619.00	88.70	88.56	6,347.47	-533.06	3,595.10	3,594.07	2.67	-2.66	-0.20	
10,715.00	89.65	89.04	6,348.85	-531.05	3,691.06	3,690.04	1.11	0.99	0.50	
10,768.00	89.02	88.98	6,349.47	-530.13	3,744.05	3,743.03	1.19	-1.19	-0.11	
10,810.00	89.00	89.04	6,350.20	-529.41	3,786.04	3,785.02	0.15	-0.05	0.14	
10,861.00	90.64	90.81	6,350.36	-529.34	3,837.03	3,836.01	4.73	3.22	3.47	
10,906.00	92.53	92.44	6,349.11	-530.62	3,882.00	3,880.97	5.55	4.20	3.62	
11,001.00	91.36	94.16	6,345.89	-536.08	3,976.78	3,975.74	2.19	-1.23	1.81	
11,051.00	90.33	93.32	6,345.15	-539.34	4,026.67	4,025.62	2.66	-2.06	-1.68	
11,096.00	90.12	94.15	6,344.97	-542.28	4,071.57	4,070.52	1.90	-0.47	1.84	
11,191.00	89.40	92.10	6,345.37	-547.45	4,166.42	4,165.36	2.29	-0.76	-2.16	
11,238.00	89.68	91.75	6,345.75	-549.03	4,213.39	4,212.33	0.95	0.60	-0.74	
11,286.00	89.62	91.03	6,346.04	-550.20	4,261.38	4,260.31	1.51	-0.13	-1.50	
11,333.00	88.95	90.50	6,346.63	-550.82	4,308.37	4,307.30	1.82	-1.43	-1.13	
11,382.00	88.66	89.79	6,347.65	-550.95	4,357.36	4,356.29	1.56	-0.59	-1.45	
11,429.00	90.22	90.43	6,348.11	-551.04	4,404.35	4,403.29	3.59	3.32	1.36	
11,477.00	89.98	89.71	6,348.03	-551.10	4,452.35	4,451.29	1.58	-0.50	-1.50	
11,573.00	91.06	89.50	6,347.15	-550.44	4,548.35	4,547.28	1.15	1.13	-0.22	
11,620.00	91.97	90.20	6,345.91	-550.31	4,595.33	4,594.26	2.44	1.94	1.49	
11,668.00	92.77	90.44	6,343.93	-550.58	4,643.29	4,642.22	1.74	1.67	0.50	
11,694.00	90.86	89.70	6,343.10	-550.61	4,669.27	4,668.21	7.88	-7.35	-2.85	
11,763.00	91.25	88.85	6,341.83	-549.74	4,738.25	4,737.19	1.36	0.57	-1.23	
11,859.00	90.76	88.46	6,340.15	-547.49	4,834.21	4,833.15	0.65	-0.51	-0.41	
11,954.00	90.39	89.11	6,339.20	-545.47	4,929.19	4,928.13	0.79	-0.39	0.68	
12,049.00	90.47	89.22	6,338.48	-544.09	5,024.17	5,023.12	0.14	0.08	0.12	
12,144.00	91.42	87.80	6,336.92	-541.62	5,119.12	5,118.08	1.80	1.00	-1.49	
12,168.00	91.70	86.95	6,336.26	-540.52	5,143.09	5,142.04	3.73	1.17	-3.54	
Last MWD Survey @ 12168' MD										
12,229.00	91.70	86.95	6,334.45	-537.27	5,203.98	5,202.94	0.00	0.00	0.00	
Projection to TD @ 12229' MD 2304' FSL/ 401' FEL										

Design Targets										
Target Name	Dip Angle (°)	Dip Dir. (°)	TVD (usft)	+N/-S (usft)	+E/-W (usft)	Northing (usft)	Easting (usft)	Latitude	Longitude	
30° Inclination @ 6111.5	0.00	0.00	5,966.37	-527.42	-773.93	1,373,910.68	3,291,427.90	40.355069	-104.454288	
- hit/miss target										
- Shape										
- actual wellpath misses target center by 0.01usft at 6111.58usft MD (5966.37 TVD, -527.41 N, -773.93 E)										
- Point										
70° Inclination @ 6668.8	0.00	0.00	6,304.33	-541.78	-347.72	1,373,901.36	3,291,854.25	40.355030	-104.452759	
- hit/miss target										
- Shape										
- actual wellpath misses target center by 0.01usft at 6668.85usft MD (6304.33 TVD, -541.77 N, -347.72 E)										
- Point										
Cross @ 7327.40' MD	0.00	0.00	6,342.53	-543.56	306.00	1,373,907.31	3,292,507.95	40.355025	-104.450413	
- hit/miss target										
- Shape										
- actual wellpath hits target center										
- Point										

## Survey Report

<b>Company:</b>	HighPoint Resources	<b>Local Co-ordinate Reference:</b>	Well Siebring 63-32-4040B
<b>Project:</b>	Weld County, CO (NAD83)	<b>TVD Reference:</b>	KB @ 4584.80usft (Cade 23)
<b>Site:</b>	Sec 32-T05-R63W Siebring Pad	<b>MD Reference:</b>	KB @ 4584.80usft (Cade 23)
<b>Well:</b>	Siebring 63-32-4040B	<b>North Reference:</b>	True
<b>Wellbore:</b>	Wellbore #1	<b>Survey Calculation Method:</b>	Minimum Curvature
<b>Design:</b>	Wellbore #1	<b>Database:</b>	EDM 5000.15 Single User Db

### Design Annotations

Measured Depth (usft)	Vertical Depth (usft)	Local Coordinates		Comment
		+N/-S (usft)	+E/-W (usft)	
129.80	129.80	-0.39	0.07	First Surface Survey
1,527.80	1,513.40	-74.76	-157.01	Last Surface Survey
1,577.80	1,562.77	-79.12	-163.56	Projection Surface Survey
1,599.00	1,583.72	-80.99	-166.24	First MWD Survey @ 1599' MD
6,111.58	5,966.37	-527.41	-773.93	30° Inclination @ 6111.58' MD
6,668.85	6,304.33	-541.77	-347.71	70° Inclination @ 6668.85' MD
7,327.40	6,342.53	-543.56	306.00	Cross @ 7327.40' MD
12,168.00	6,336.26	-540.52	5,143.09	Last MWD Survey @ 12168' MD
12,229.00	6,334.45	-537.27	5,203.98	Projection to TD @ 12229' MD 2304' FSL/ 401' FEL

Checked By: \_\_\_\_\_ Approved By: \_\_\_\_\_ Date: \_\_\_\_\_