



**Well Services**  
E - L I N E

**RADIAL BOND TOOL  
GAMMA RAY  
CCL**


Company NOBLE ENERGY		Company NOBLE ENERGY					
Well THOMPSON 3		Well THOMPSON 3					
Field WATTENBERG		Field WATTENBERG					
County WELD		County WELD					
State COLORADO		State COLORADO					
Location: API # : 05-123-11830		Other Services					
SEC 28 TWP 4N RGE 64W		SW/SW					
Permanent Datum GL KB 13'		Elevation 4751'					
Log Measured From KB		K.B. 4764'					
Drilling Measured From KB		D.F. 4763'					
Date 10-14-2019		G.L. 4751'					
Run Number ONE							
Depth Driller 7068'							
Depth Logger 6200'							
Bottom Logged Interval 6200'							
Top Log Interval SURFACE							
Open Hole Size NA							
Type Fluid WATER							
Density / Viscosity NA							
Max. Recorded Temp. 186							
Estimated Cement Top 5694'		AIR FROM 2600'					
Time Well Ready NA		TO SURFACE					
Time Logger on Bottom NA							
Equipment Number 7770							
Location GREELEY CO							
Recorded By A.STEERMAN							
Witnessed By J.JACOBS							
Borehole Record		Tubing Record					
Run Number	Bit	From	To	Size	Weight	From	To
Casing Record	Size		Wgt/Ft		Top		Bottom
Surface String	8 5/8		24#		SURFACE		433'
Prot. String							
Production String	4.5		10.5		SURFACE		7048'
Liner							

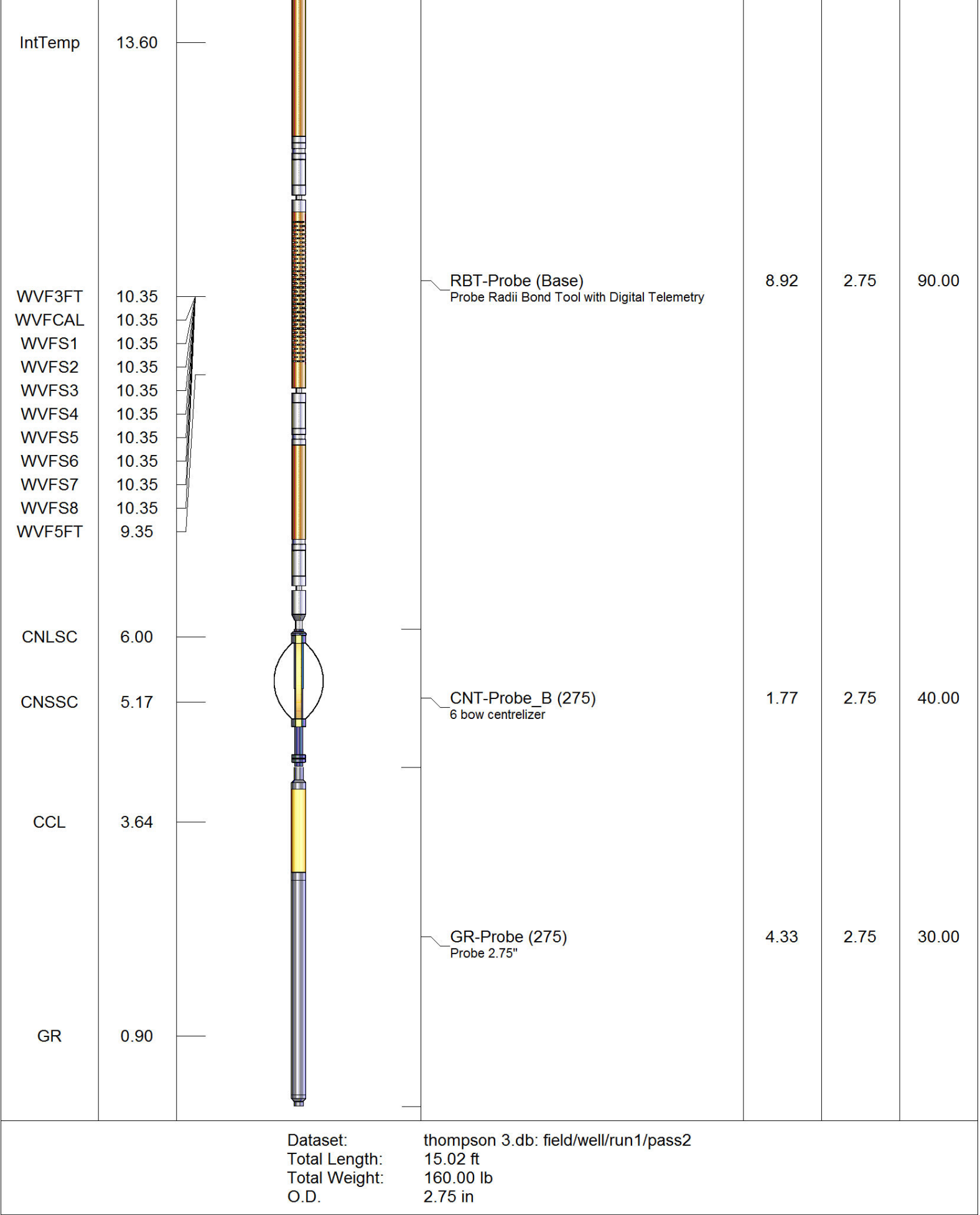
<<< Fold Here >>>

All interpretations are opinions based on inferences from electrical or other measurements and we cannot and do not guarantee the accuracy or correctness of any interpretation, and we shall not, except in the case of gross or willful negligence on our part, be liable or responsible for any loss, costs, damages, or expenses incurred or sustained by anyone resulting from any interpretation made by any of our officers, agents or employees. These interpretations are also subject to our general terms and conditions set out in our current Price Schedule.

Comments

RAN CBL TO VERIFY CEMENT BOND  
WELL LOADED APON ARRIVAL  
  
THANK YOU FOR USING SPN WELL SERVICES!

Sensor	Offset (ft)	Schematic	Description	Len (ft)	OD (in)	Wt (lb)
HEADVOLT	15.02					





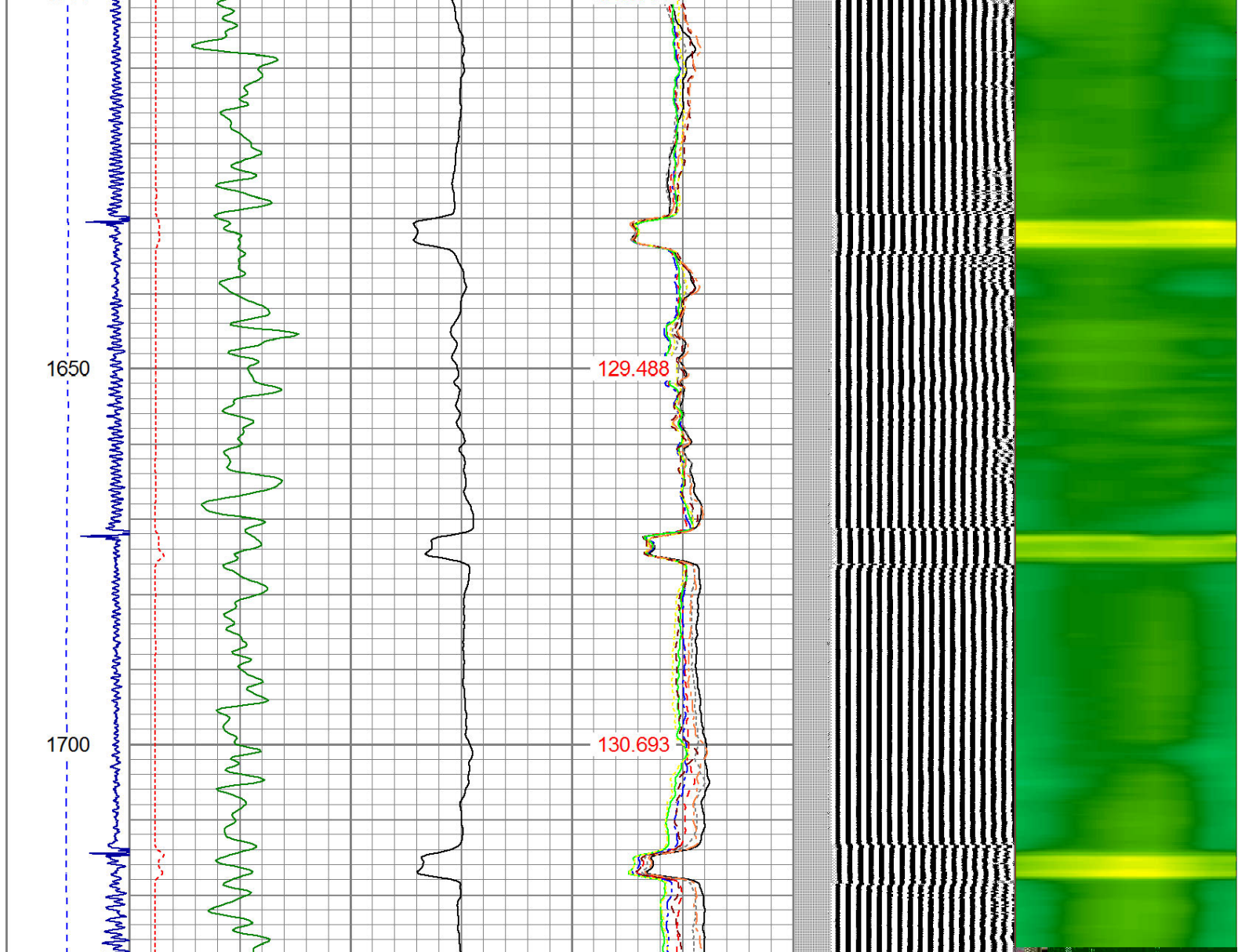


1650

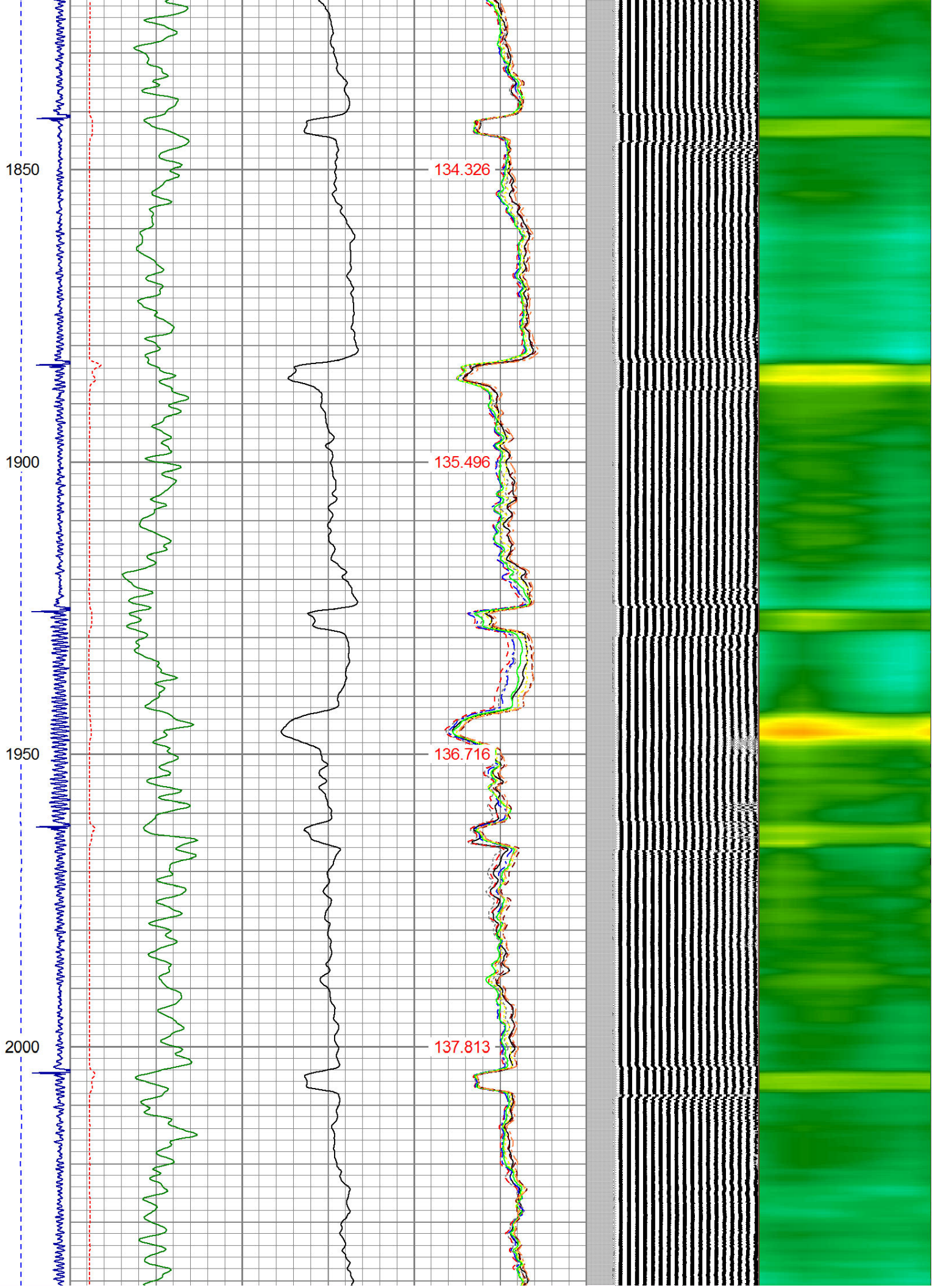
1700

129.488

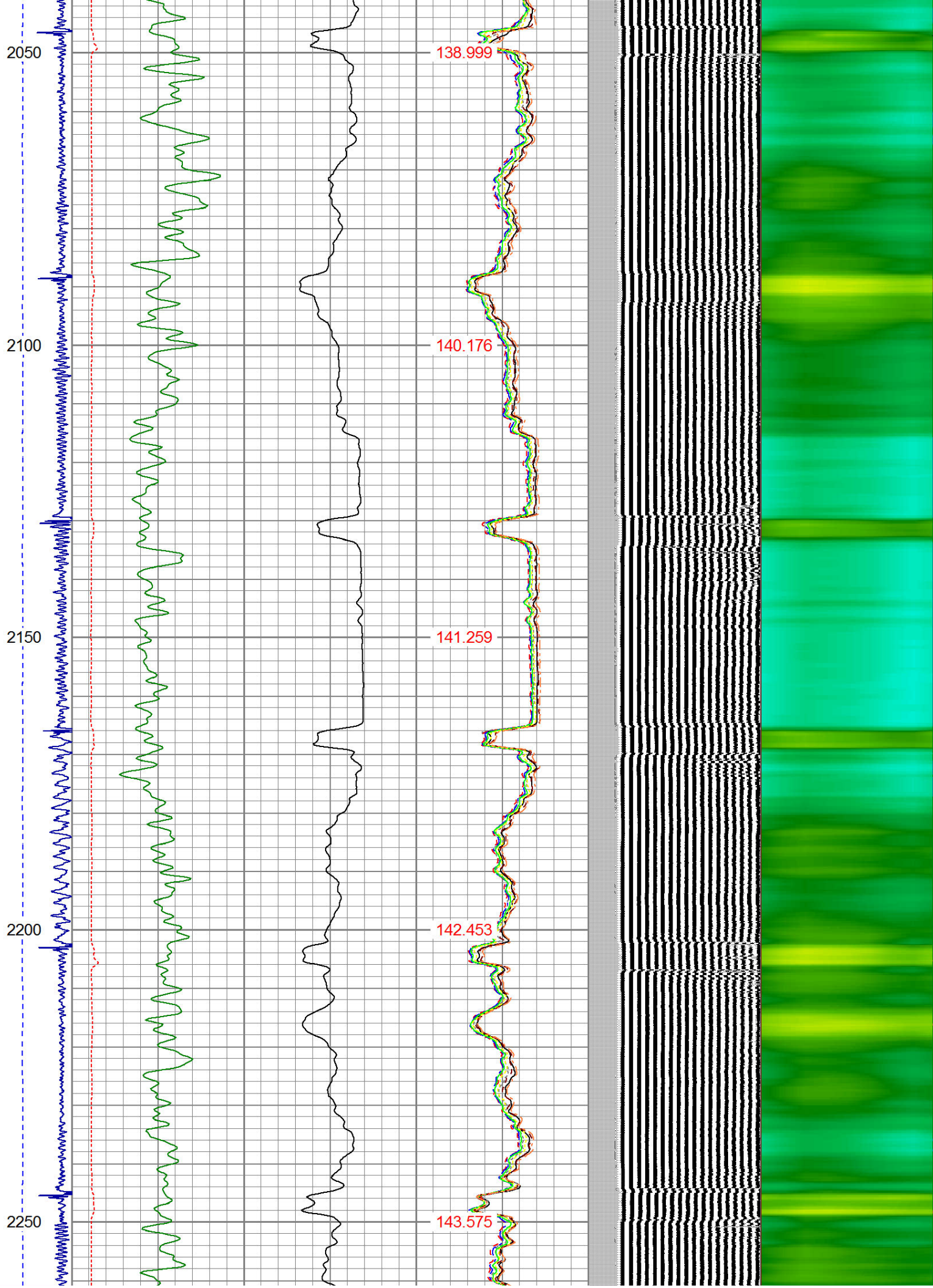
130.693



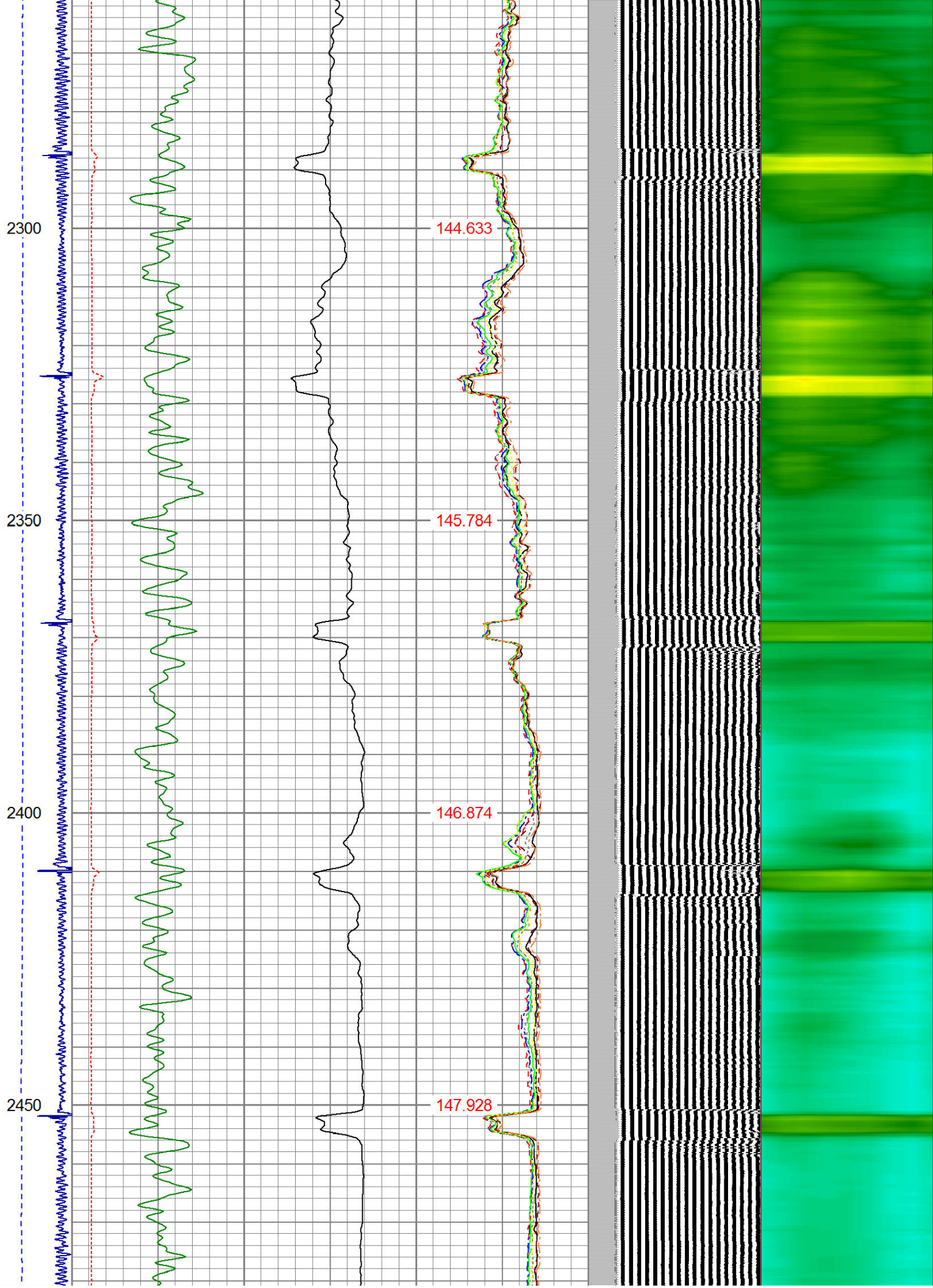




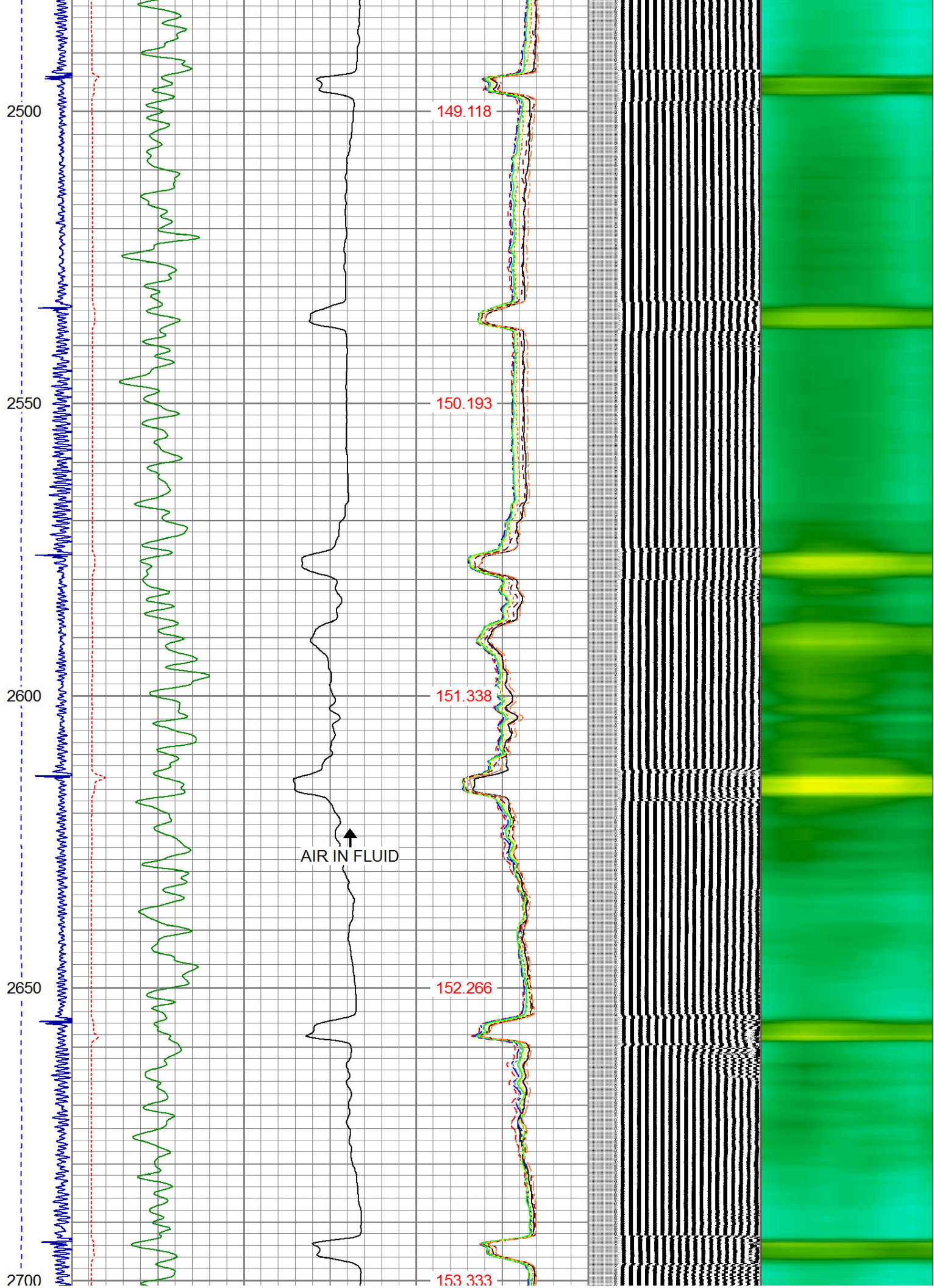




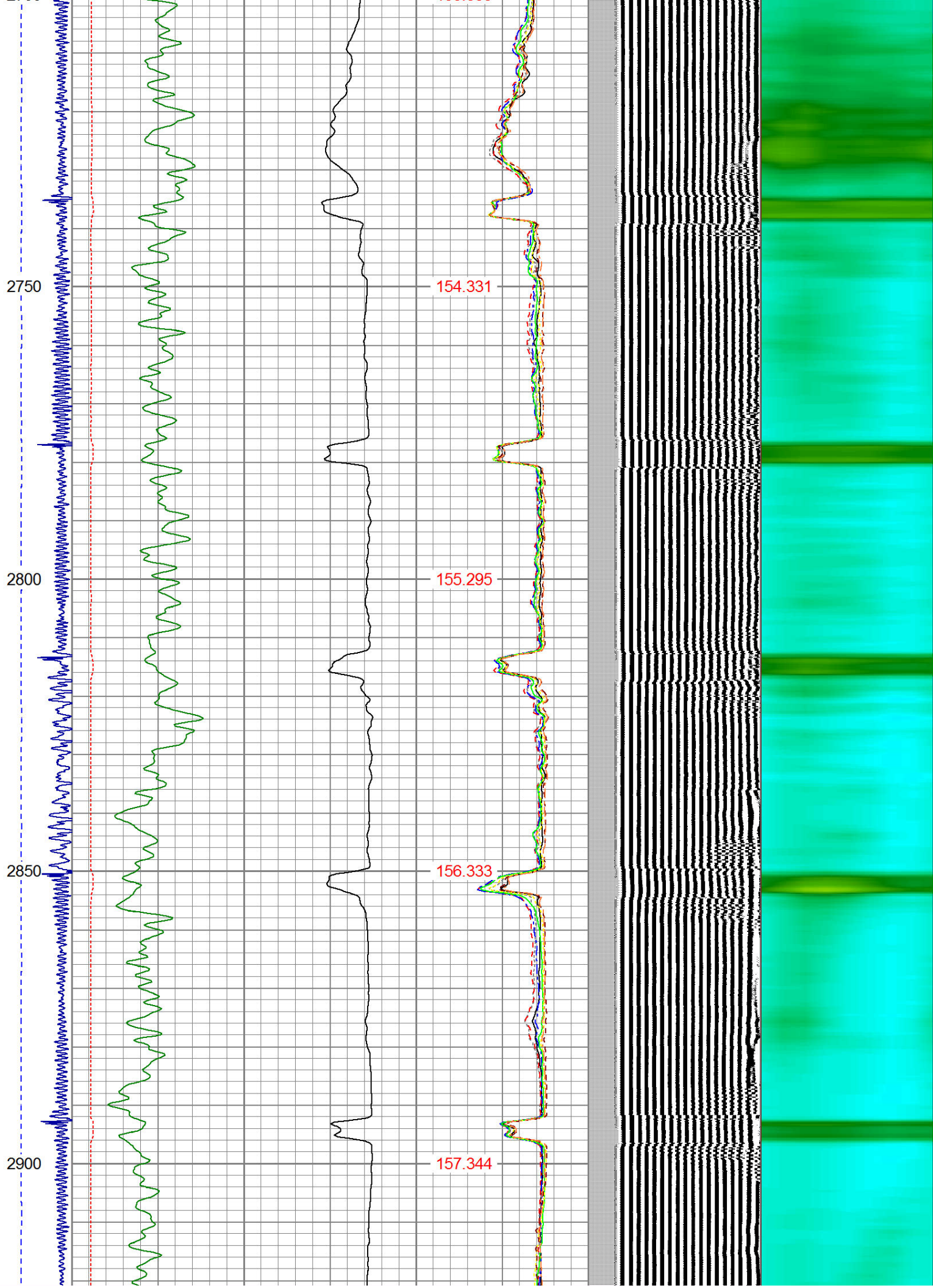














2950

3000

3050

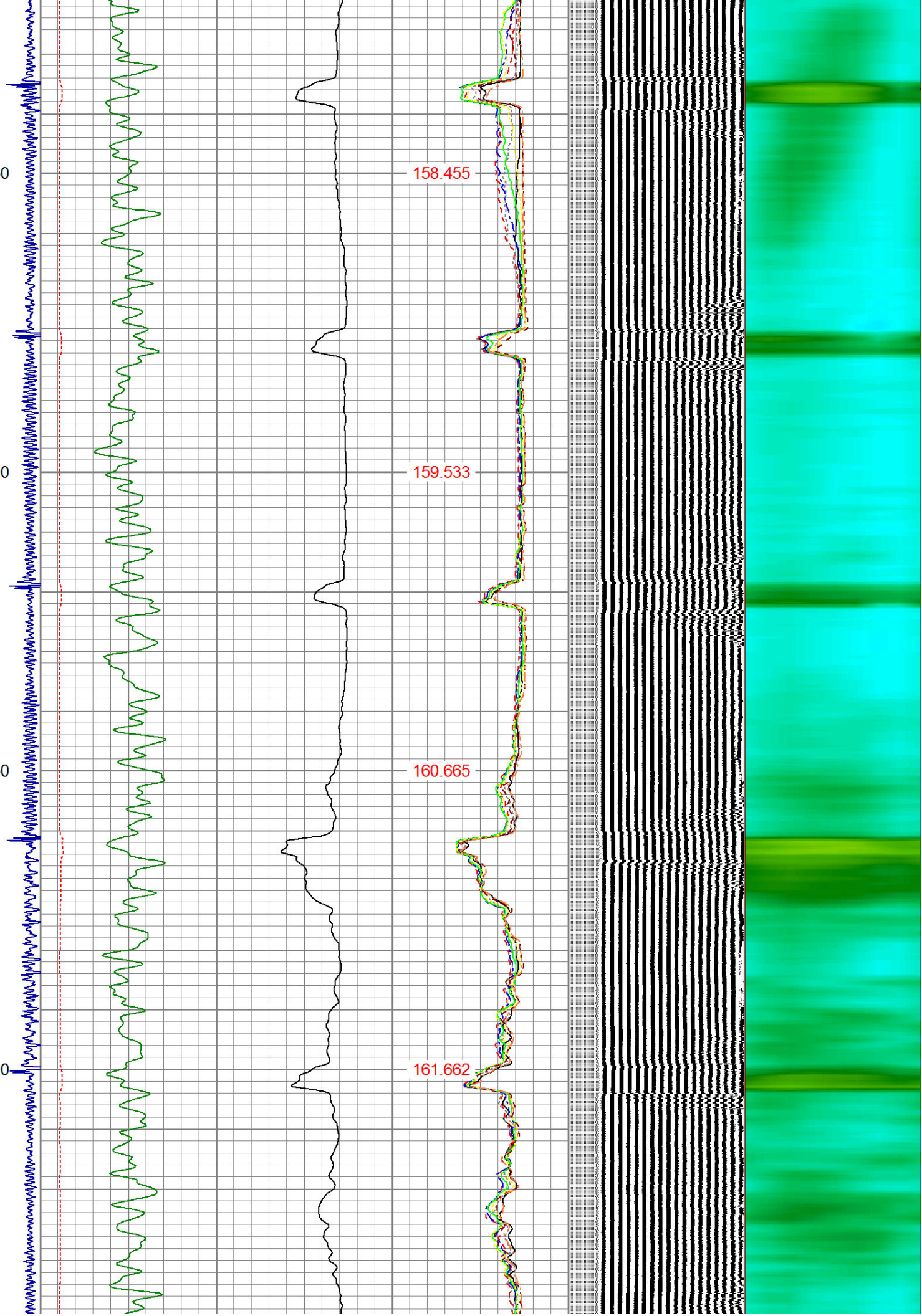
3100

158.455

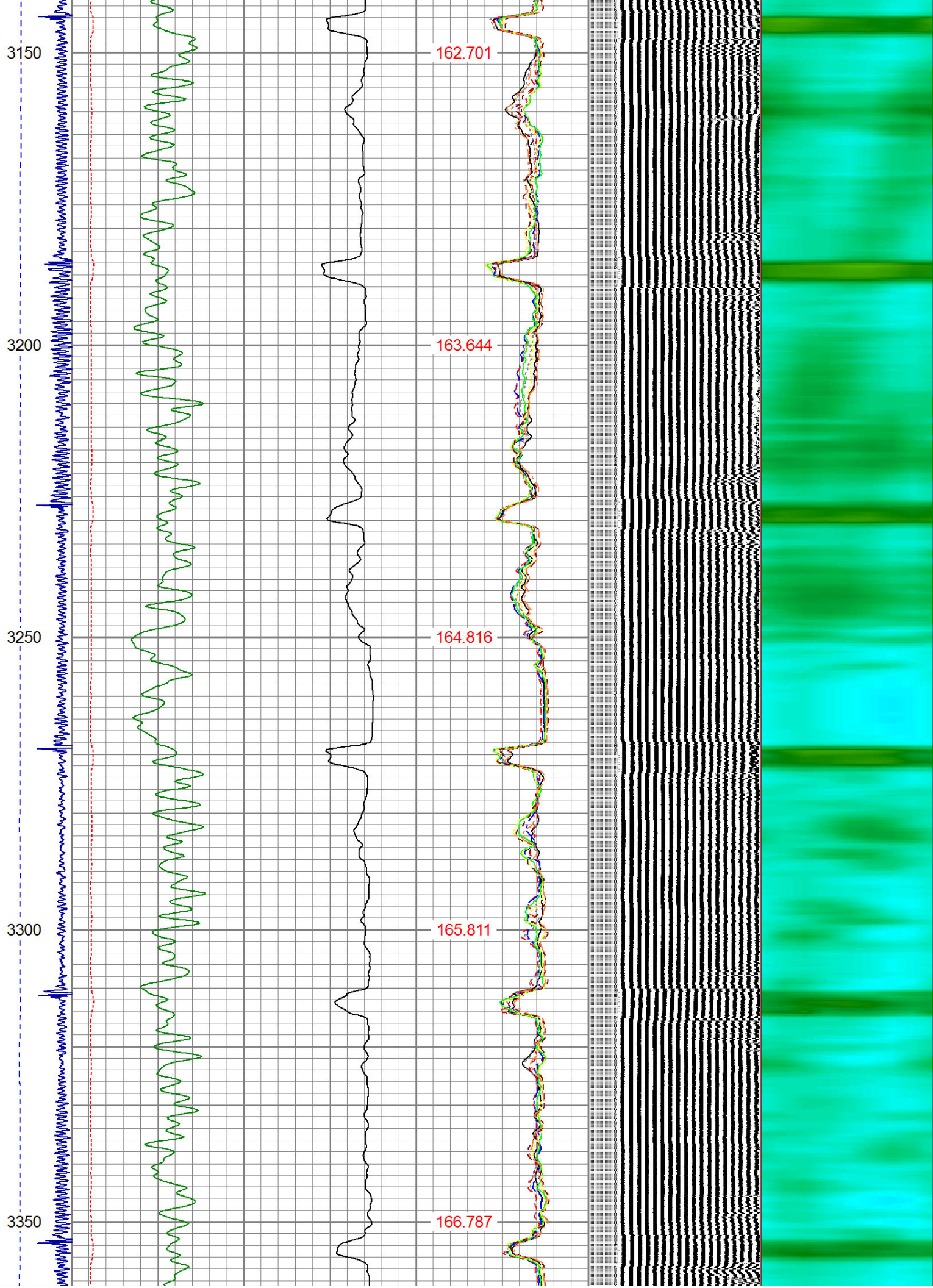
159.533

160.665

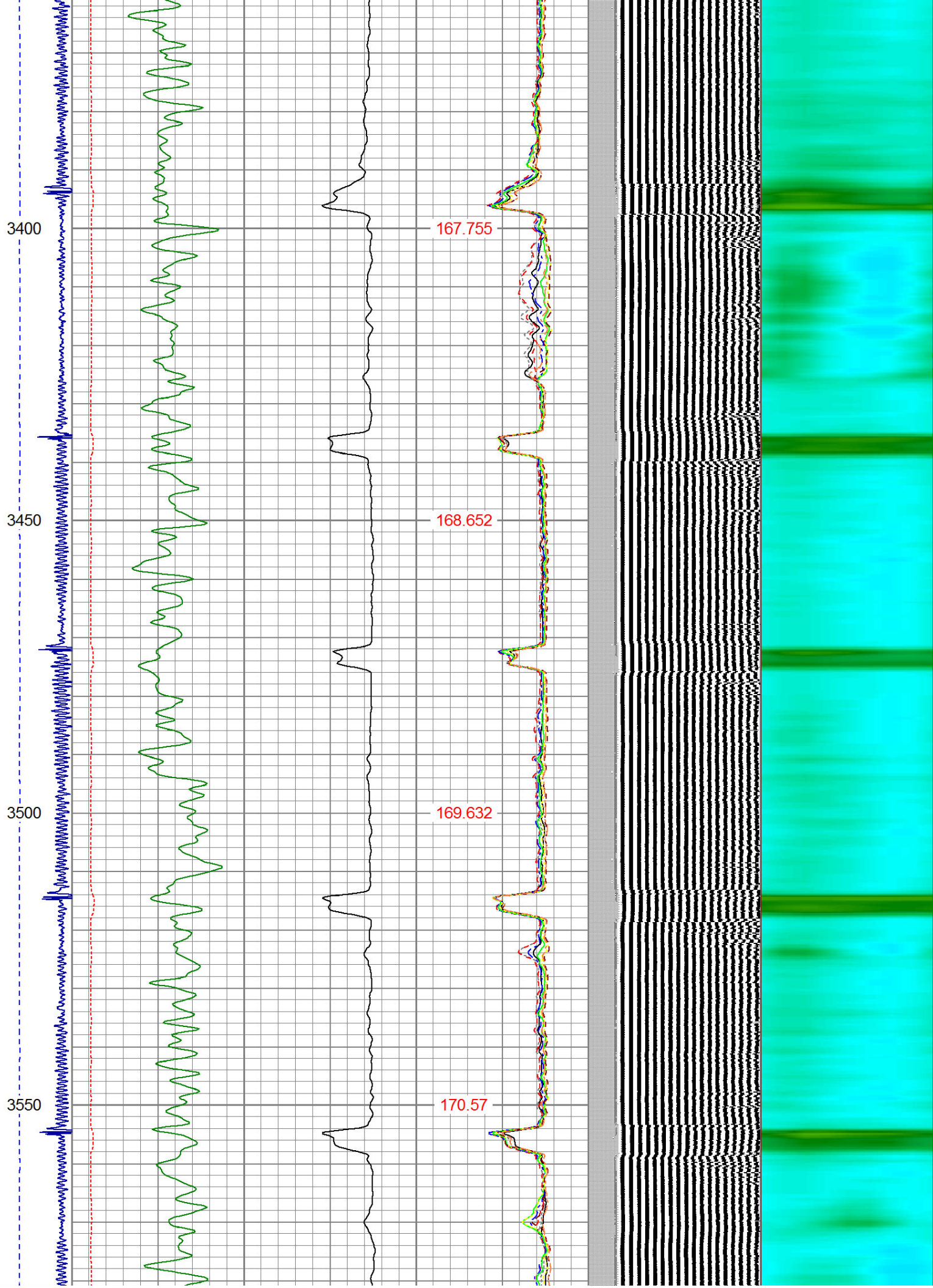
161.662



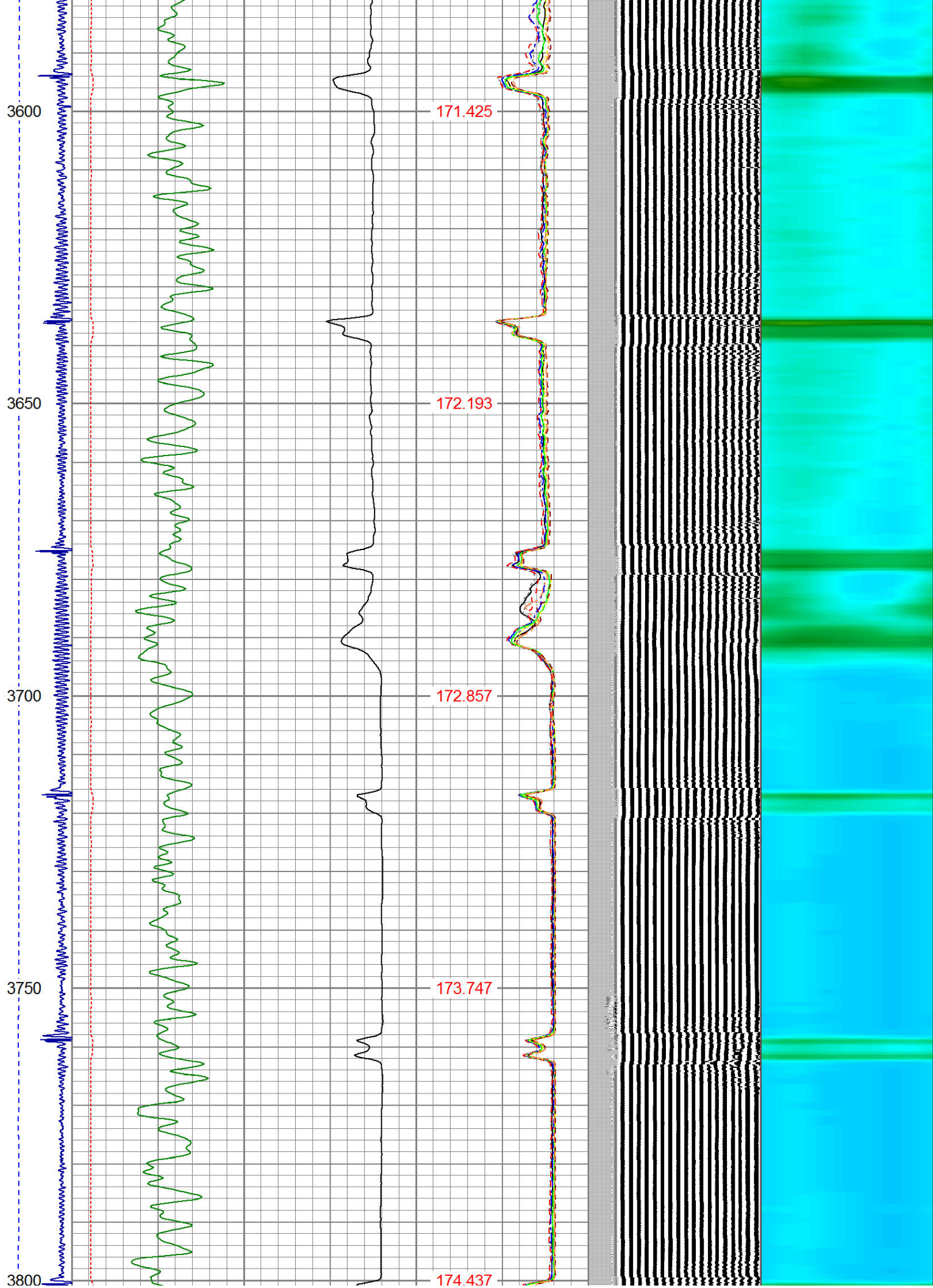




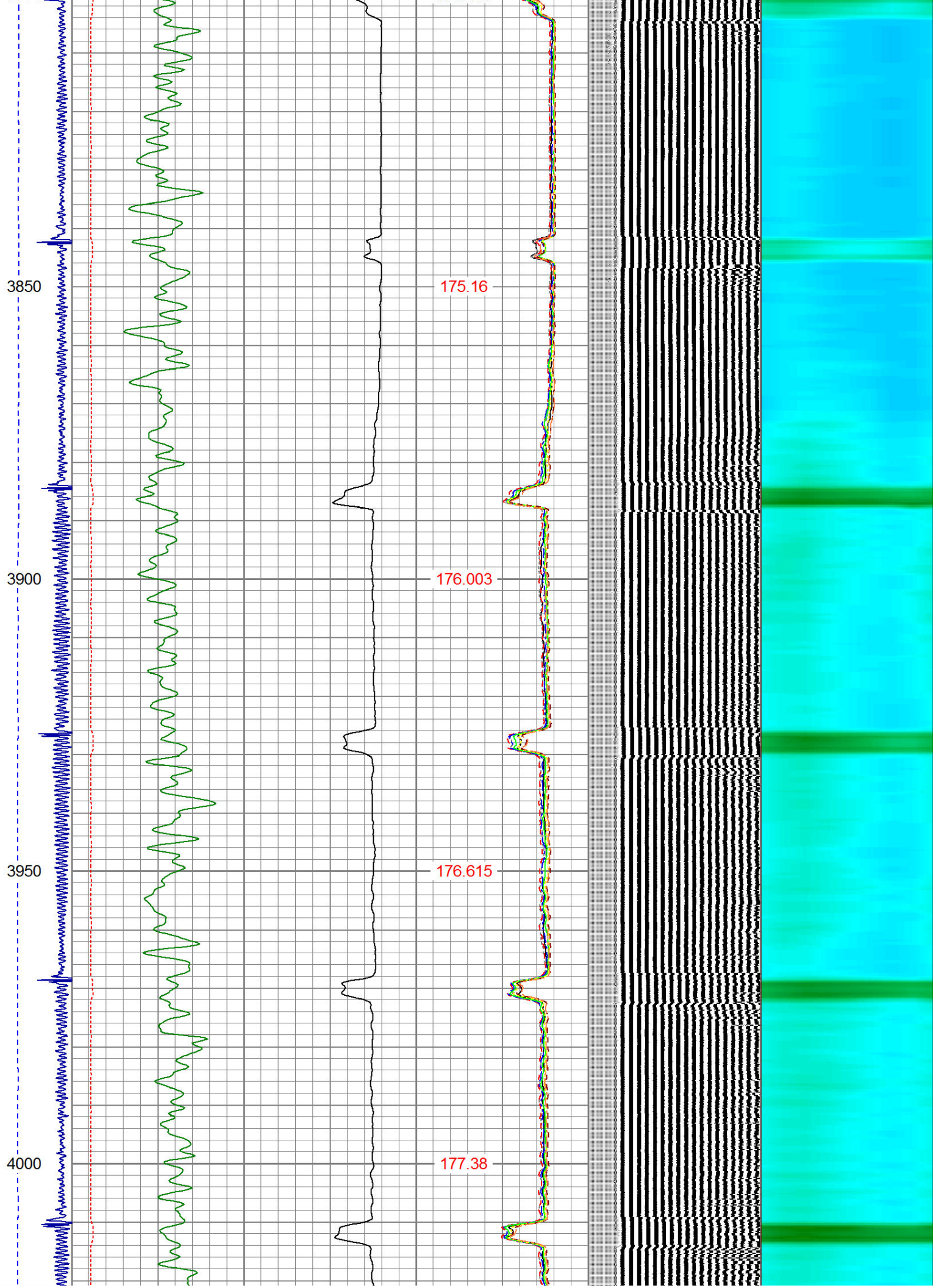




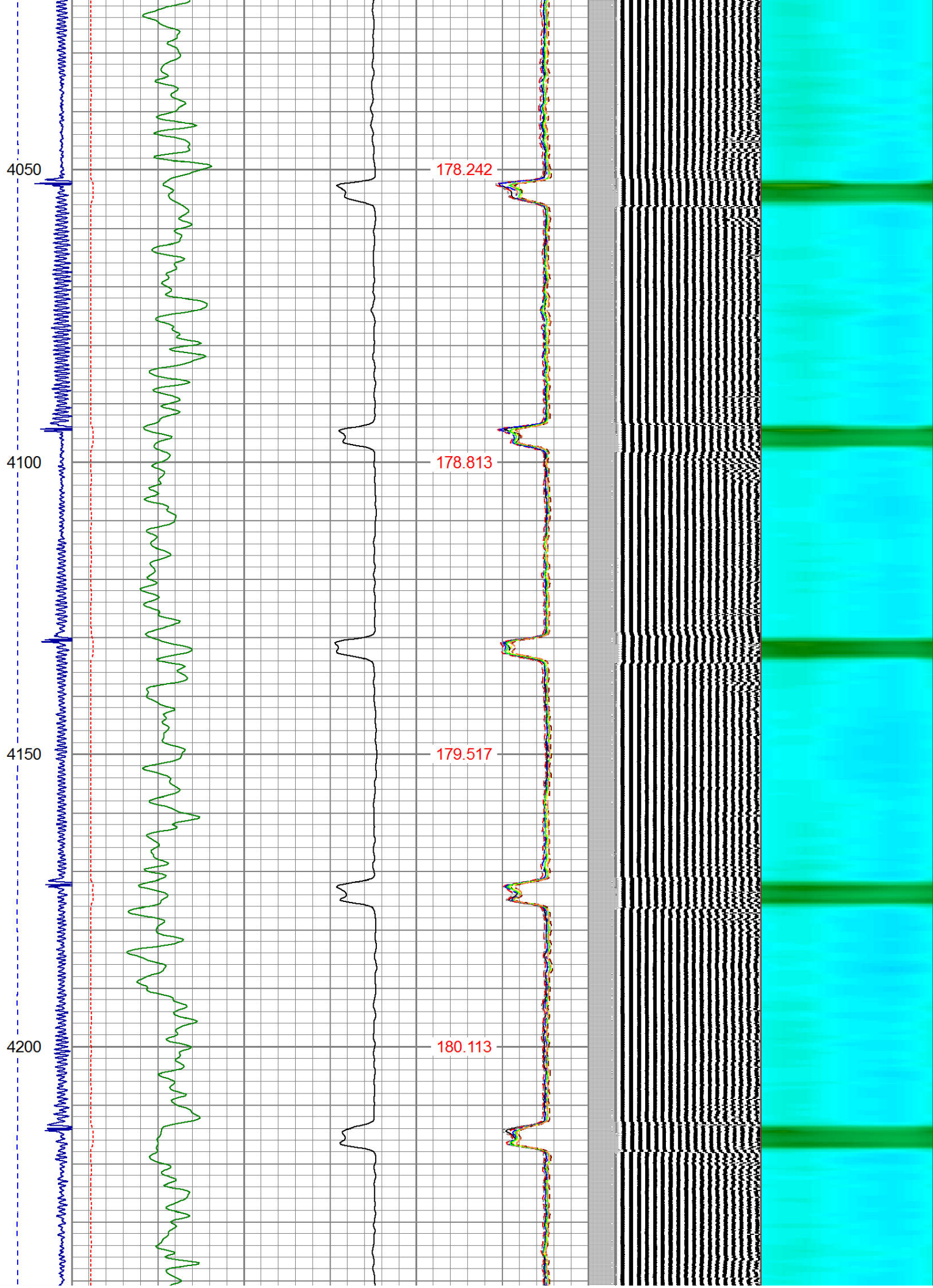




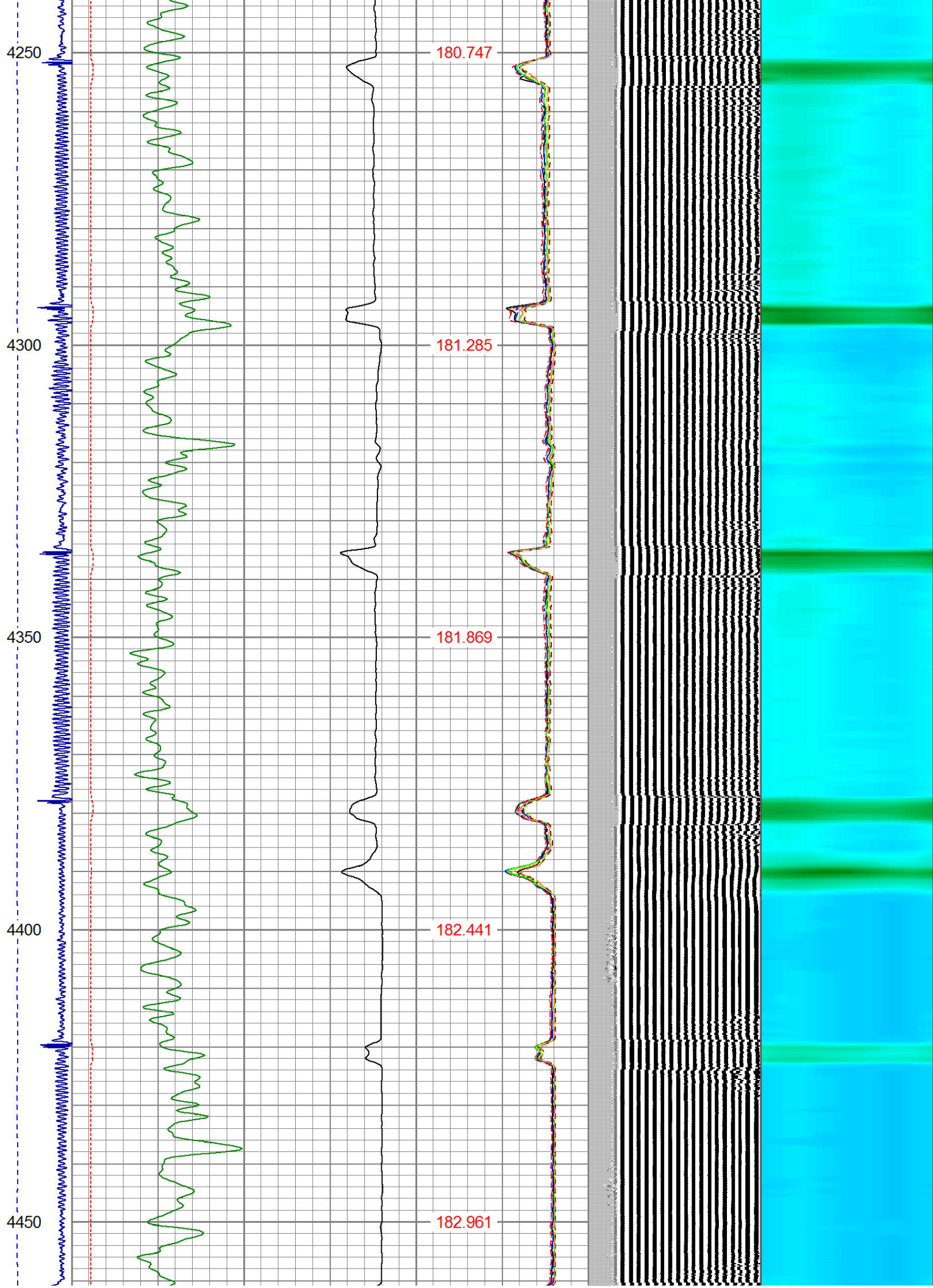




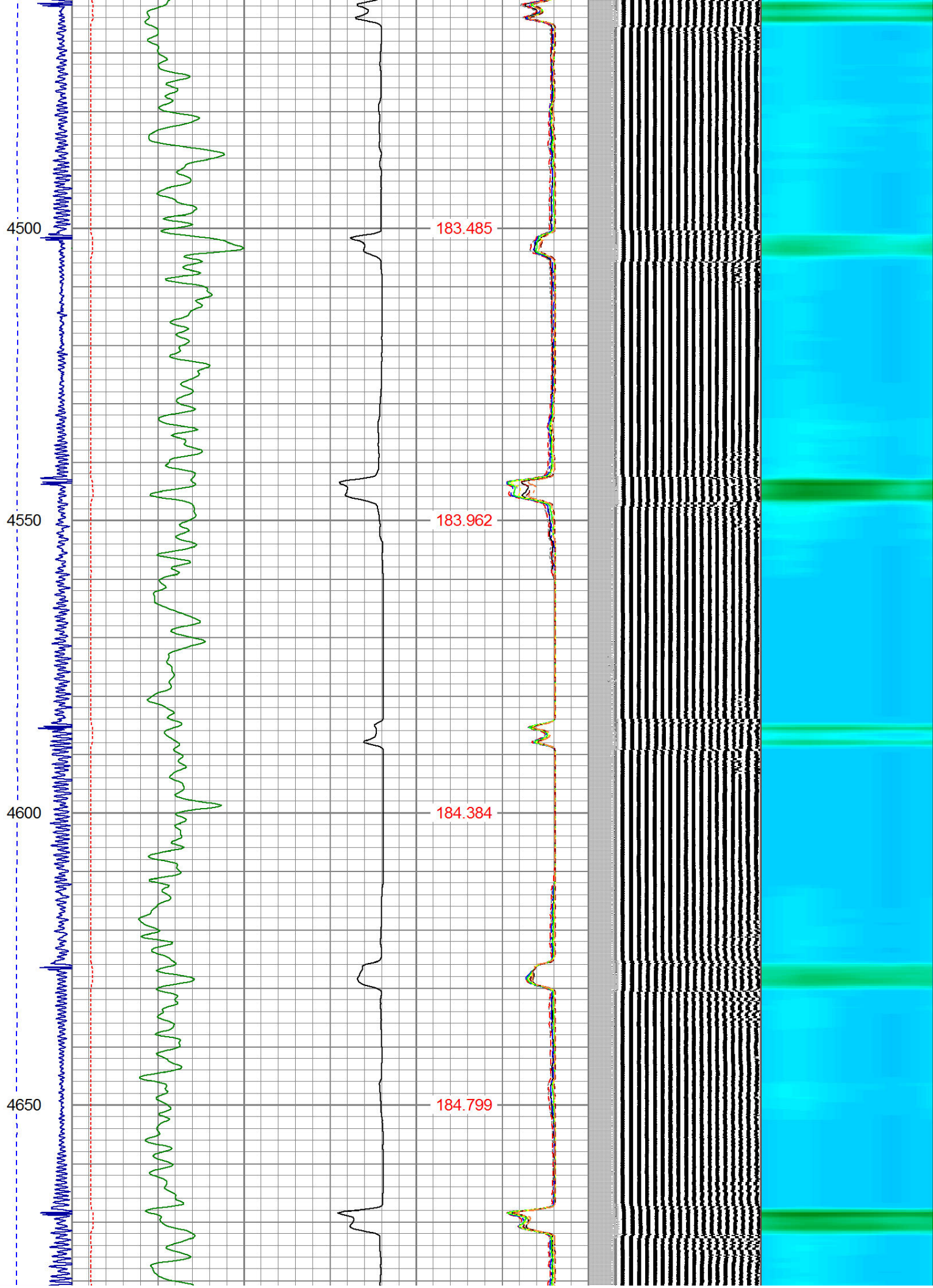


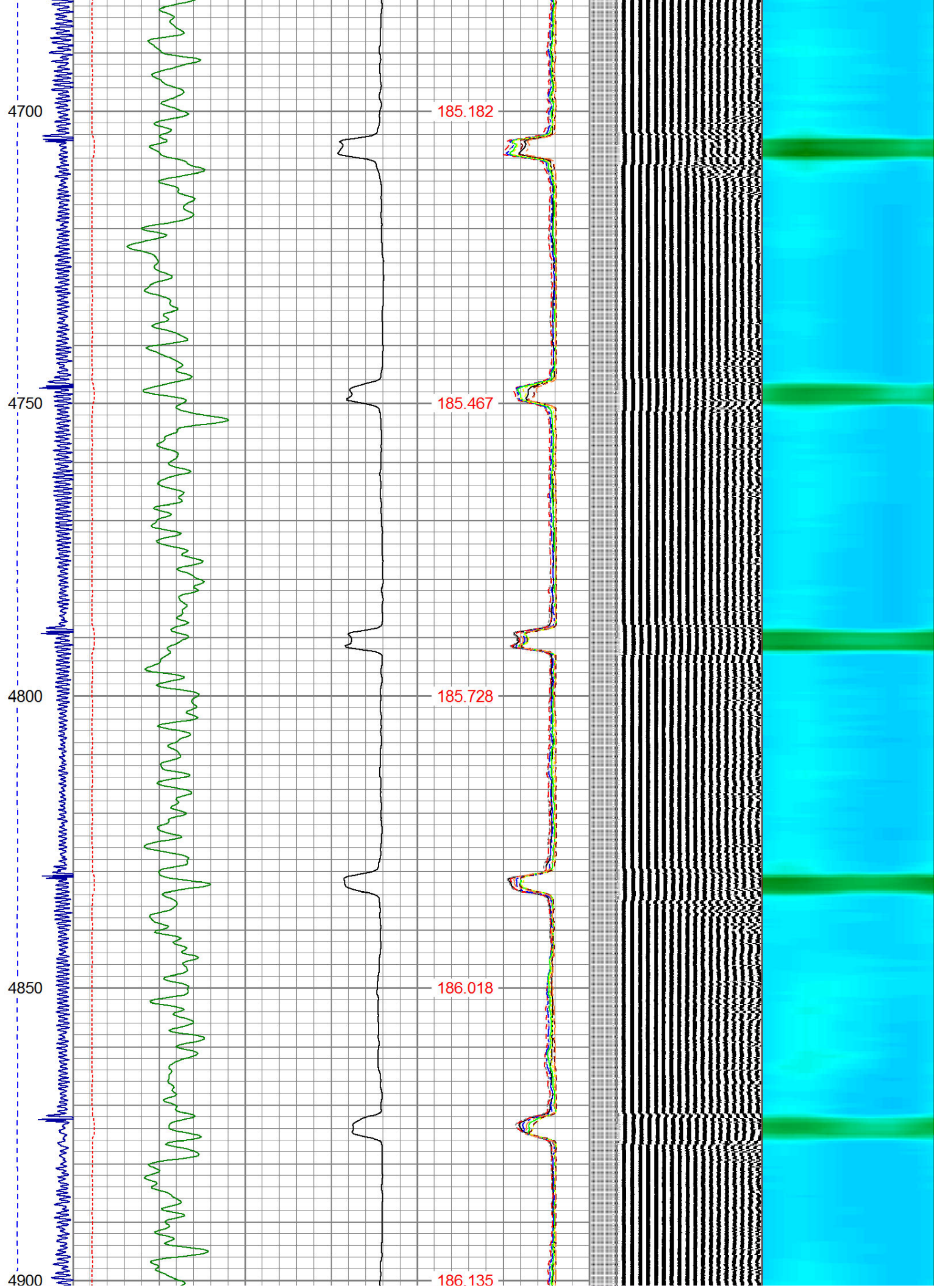




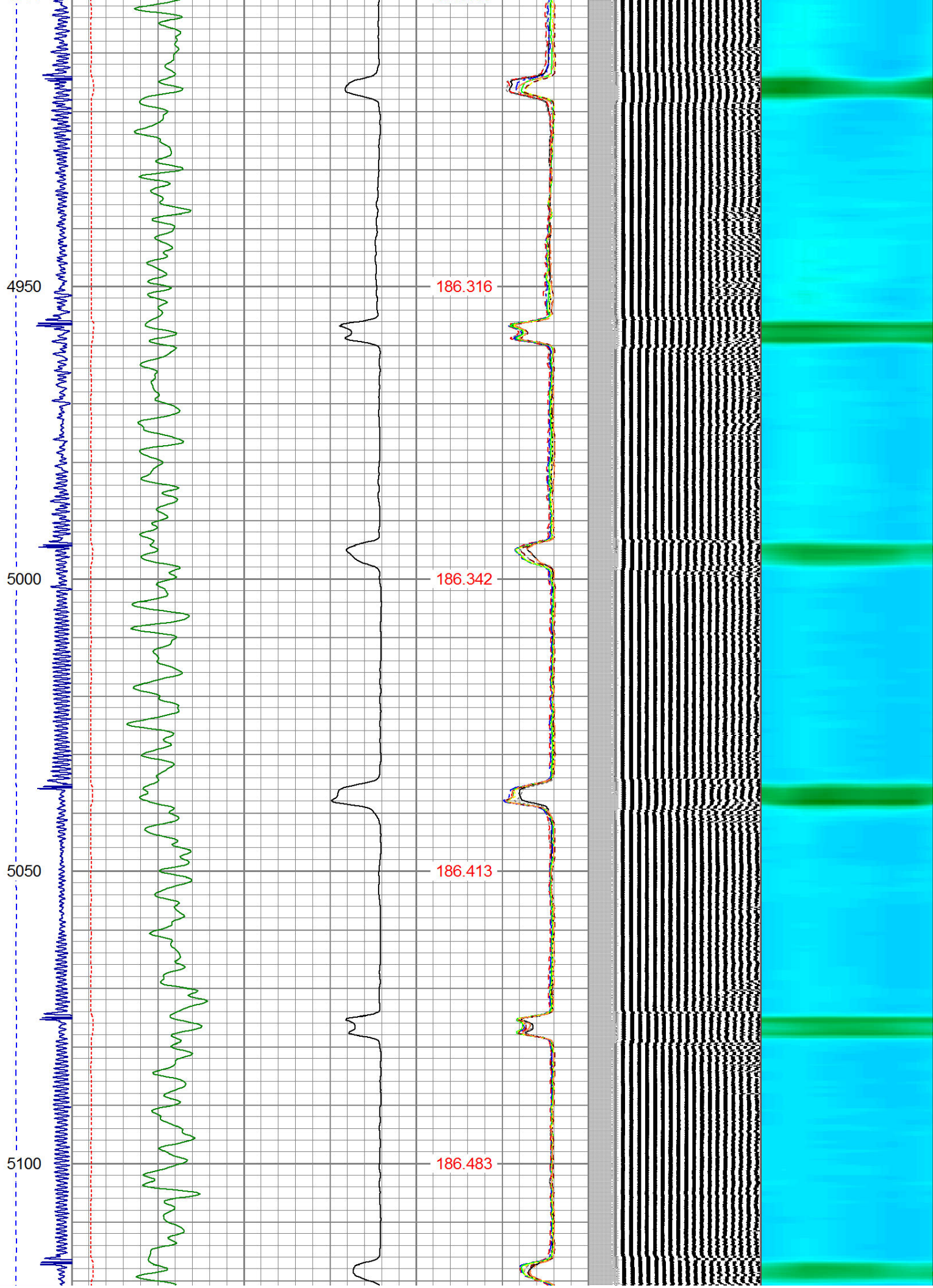




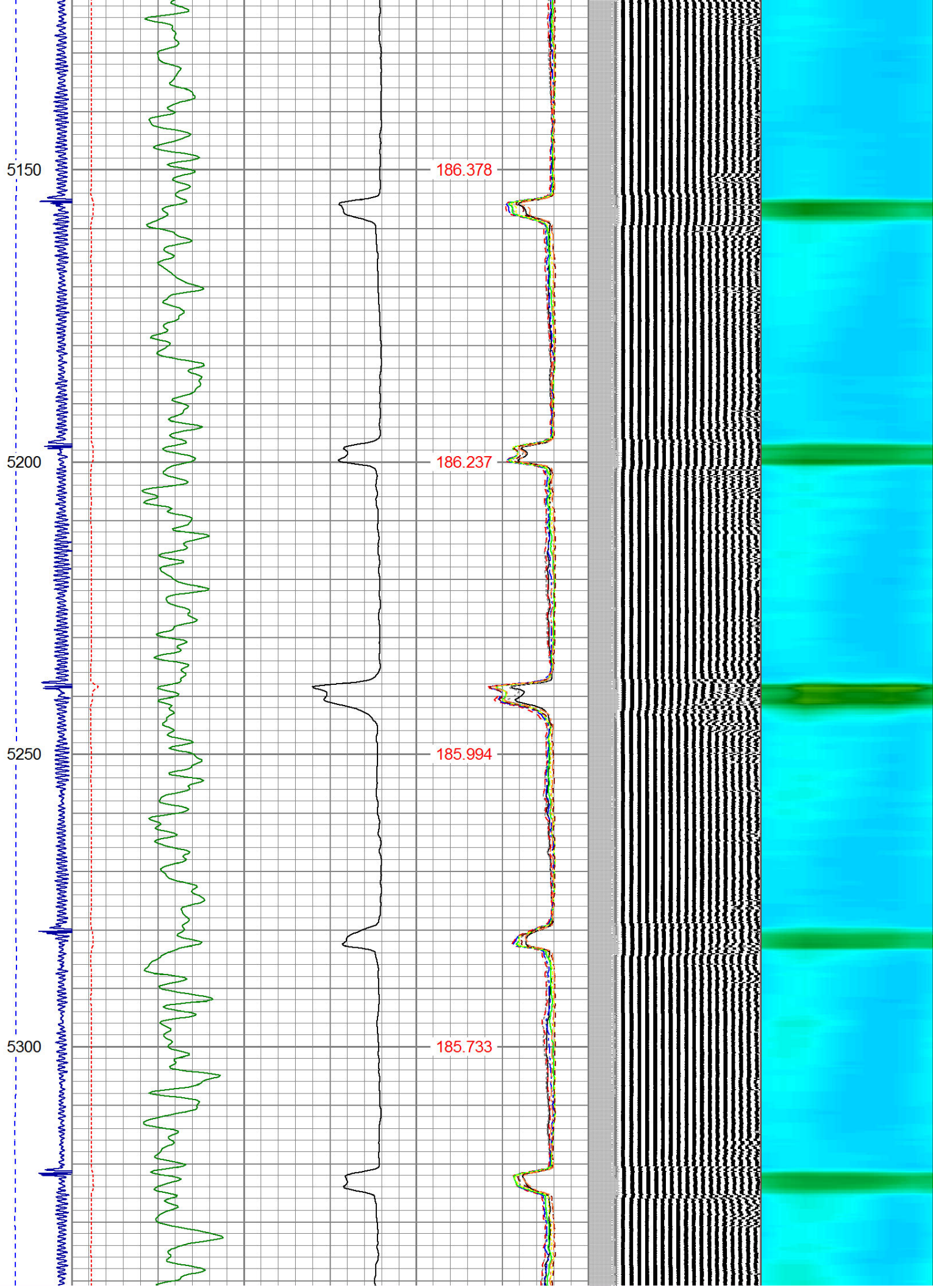




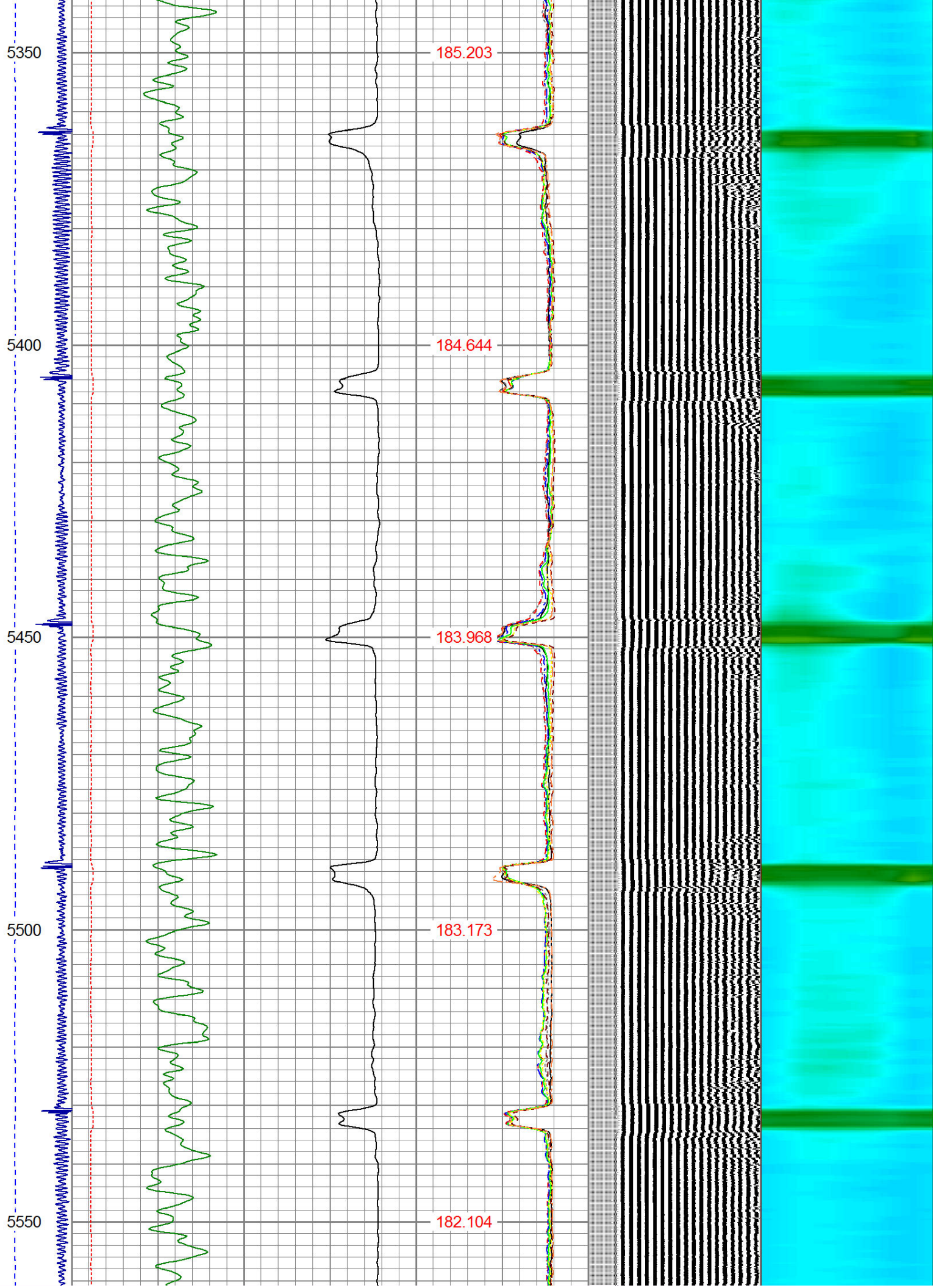




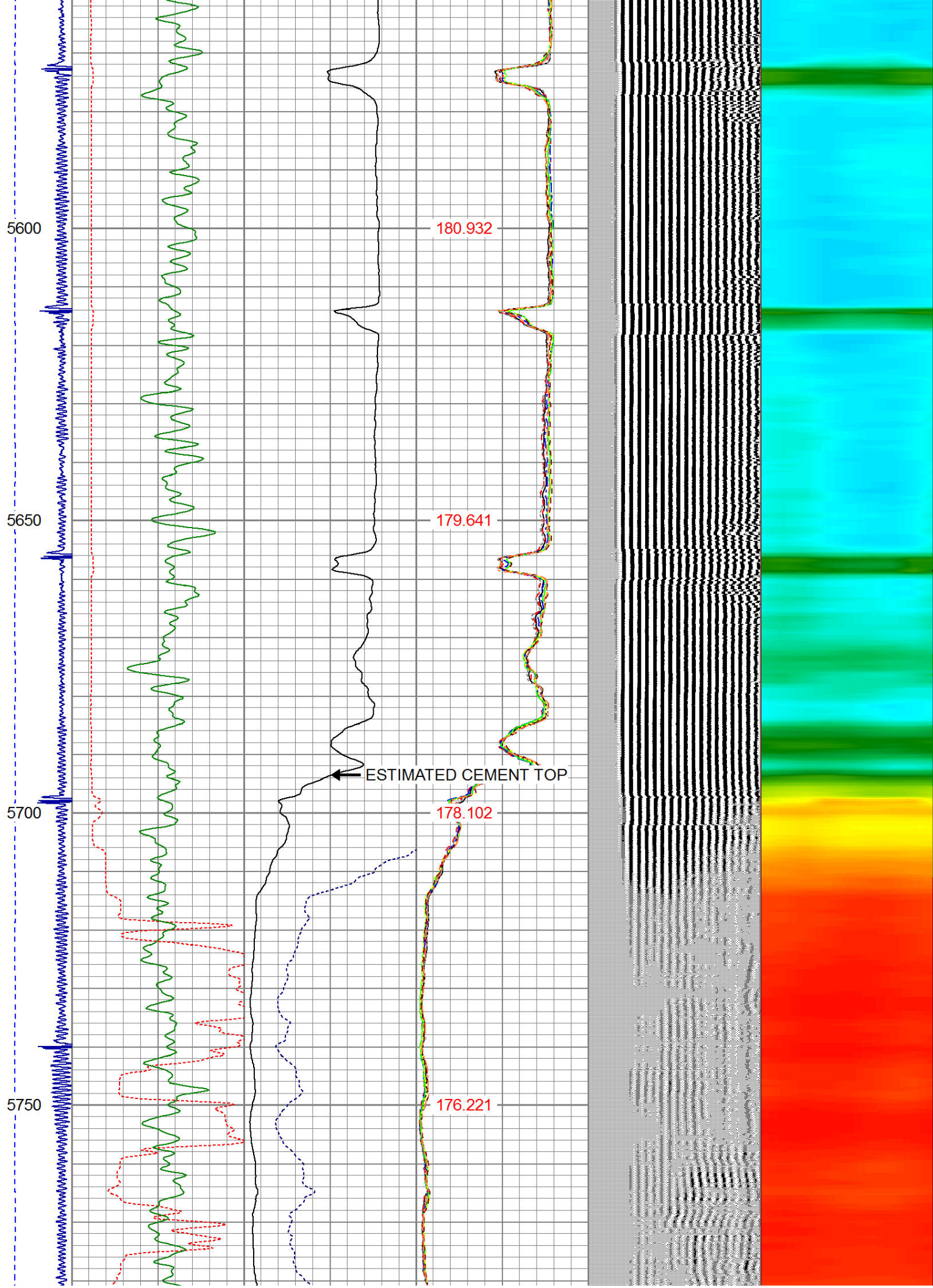




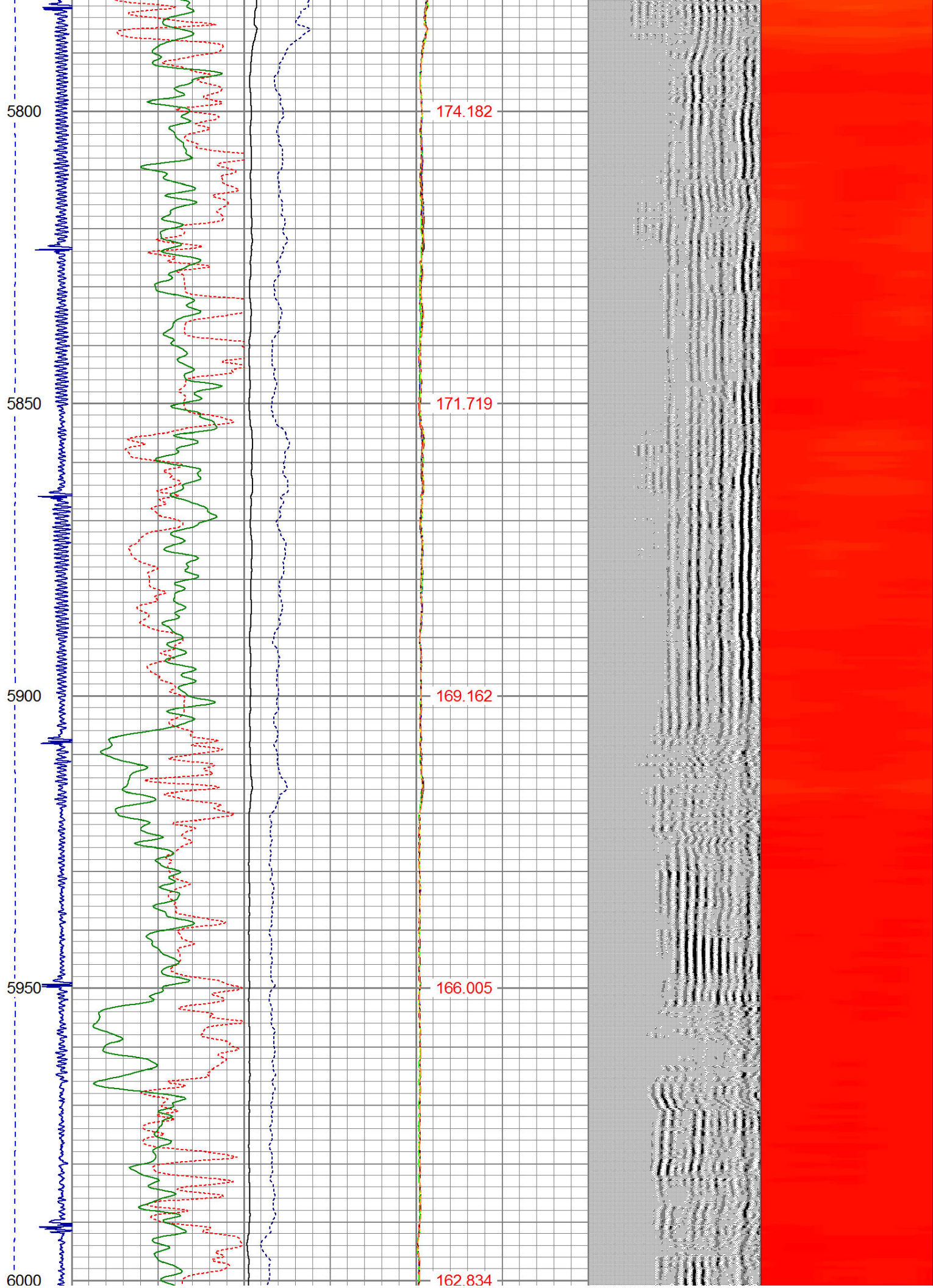




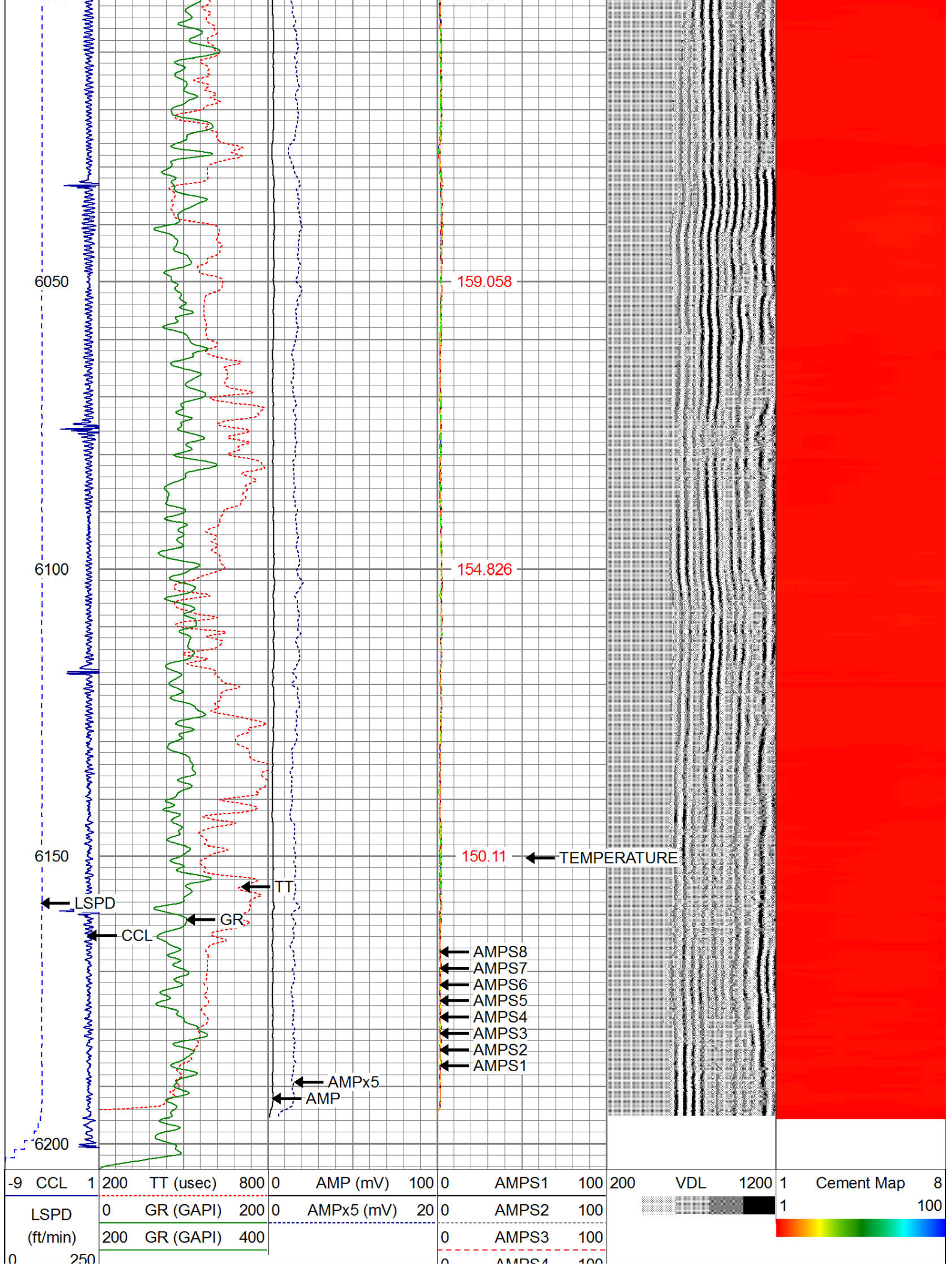














100	0	AMPS4	100
	0	AMPS5	100
	0	AMPS6	100
	0	AMPS7	100
	0	AMPS8	100
	IntTemp (degF)		

		Company	NOBLE ENERGY
	Well		THOMPSON 3
	Field		WATTENBERG
	County		WELD
	State		COLORADO