



BAYSWATER

Bayswater Exploration & Production, LLC

DJ Basin

WEST EATON 2-A PAD

WEST EATON X-35-36HC

Wellbore #1

Plan: Design #1

Standard Planning Report

15 August, 2019



Pad Name: WEST EATON 2-A PAD
Well Name: WEST EATON X-35-36HC
Ground Level: 4902.0
SHL Latitude: 40° 31' 14.829 N
SHL Longitude: 104° 45' 16.128 W

SECTION DETAILS

Sec	MD	Inc	Azi	TVD	+N/-S	+E/-W	Dleg	TFace	Vsect	Target
1	0.0	0.00	0.00	0.0	0.0	0.0	0.00	0.00	0.0	
2	1500.0	0.00	0.00	1500.0	0.0	0.0	0.00	0.00	0.0	
3	2261.4	15.23	340.70	2252.5	94.9	-33.3	2.00	340.70	-14.4	
4	6909.5	15.23	340.70	6737.3	1247.2	-436.9	0.00	0.00	-189.0	
5	7857.0	90.00	89.07	7338.0	1411.7	131.5	10.00	107.77	400.4	WE X-35-36HC LP
6	15575.2	90.00	89.07	7338.0	1537.5	7848.7	0.00	0.00	7997.9	WE X-35-36HC BHL

DESIGN TARGET DETAILS

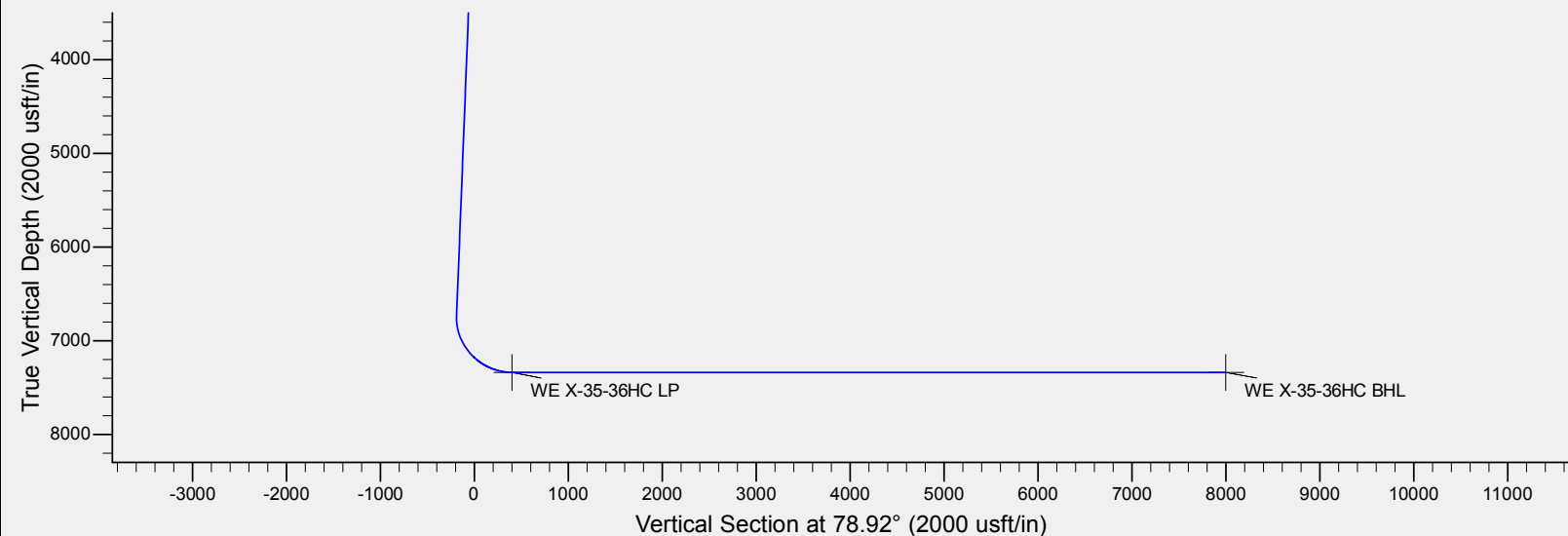
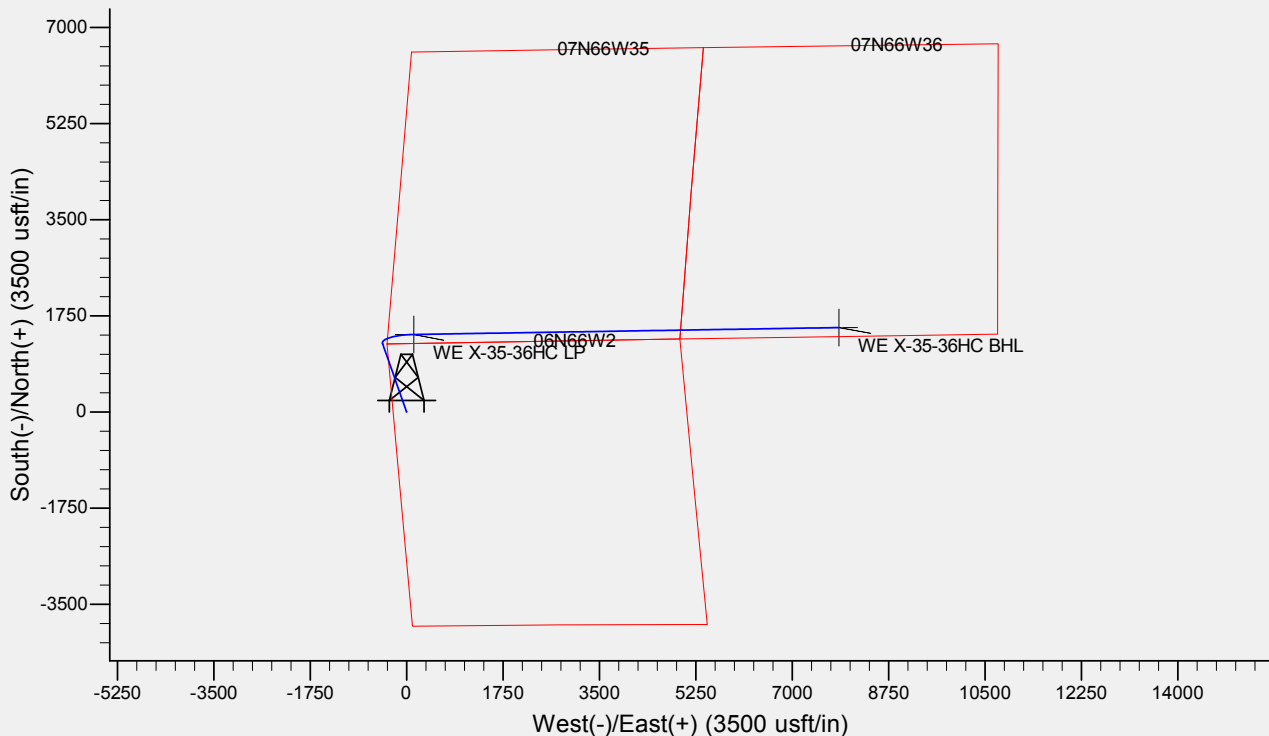
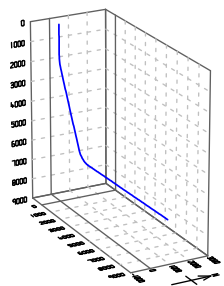
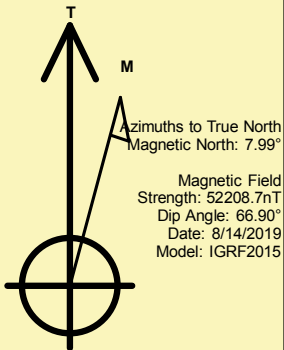
Name	TVD	+N/-S	+E/-W	Northing	Easting	Latitude	Longitude	Shape
WE X-35-36HC LP	7338.0	1411.7	131.5	1434846.99	3207382.27	40° 31' 28.780 N	104° 45' 14.425 W	Point
WE X-35-36HC BHL	7338.0	1537.5	7848.7	1435037.70	3215098.13	40° 31' 30.011 N	104° 43' 34.489 W	Point
	- plan hits target center							
	- plan hits target center							

REFERENCE INFORMATION

Co-ordinate (N/E) Reference: Well WEST EATON X-35-36HC, True North
Vertical (TVD) Reference: TRUE 38 KB @ 4927.0usft (Original Well Elev)
Section (VS) Reference: Slot - (0.0N, 0.0E)
Measured Depth Reference: TRUE 38 KB @ 4927.0usft (Original Well Elev)
Calculation Method: Minimum Curvature

CASING DETAILS

TVD	MD	Name	Size
1500.0	1500.0	9 5/8"	9-5/8
7338.0	15575.0	5 1/2"	5-1/2





Database:	EDM	Local Co-ordinate Reference:	Well WEST EATON X-35-36HC
Company:	Bayswater Exploration & Production, LLC	TVD Reference:	TRUE 38 KB @ 4927.0usft (Original Well Elev)
Project:	DJ Basin	MD Reference:	TRUE 38 KB @ 4927.0usft (Original Well Elev)
Site:	WEST EATON 2-A PAD	North Reference:	True
Well:	WEST EATON X-35-36HC	Survey Calculation Method:	Minimum Curvature
Wellbore:	Wellbore #1		
Design:	Design #1		

Project	DJ Basin, DJ Basin		
Map System:	US State Plane 1983	System Datum:	Mean Sea Level
Geo Datum:	North American Datum 1983		
Map Zone:	Colorado Northern Zone		

Site	WEST EATON 2-A PAD		
Site Position:		Northing:	1,433,599.23 usft
From:	Lat/Long	Easting:	3,207,257.38 usft
Position Uncertainty:	0.0 usft	Slot Radius:	13-3/16 "
		Latitude:	40° 31' 16.460 N
		Longitude:	104° 45' 16.178 W
		Grid Convergence:	0.48 °

Well	WEST EATON X-35-36HC		
Well Position	+N/-S	-165.0 usft	Northing:
	+E/-W	3.9 usft	Easting:
Position Uncertainty	0.0 usft		Wellhead Elevation:
			Latitude:
			Longitude:
			Ground Level:

Wellbore	Wellbore #1				
Magnetics	Model Name	Sample Date	Declination (°)	Dip Angle (°)	Field Strength (nT)
	IGRF2015	8/14/2019	7.99	66.90	52,208.71047683

Design	Design #1				
Audit Notes:					
Version:		Phase:	PLAN	Tie On Depth:	0.0
Vertical Section:		Depth From (TVD) (usft)	+N/-S (usft)	+E/-W (usft)	Direction (°)
		0.0	0.0	0.0	78.92

Plan Survey Tool Program	Date	8/14/2019			
Depth From (usft)	Depth To (usft)	Survey (Wellbore)	Tool Name	Remarks	
1	0.0	15,575.2	Design #1 (Wellbore #1)	MWD	
				OWSG MWD - Standard	

Plan Sections										
Measured Depth (usft)	Inclination (°)	Azimuth (°)	Vertical Depth (usft)	+N/-S (usft)	+E/-W (usft)	Dogleg Rate (°/100usft)	Build Rate (°/100usft)	Turn Rate (°/100usft)	TFO (°)	Target
0.0	0.00	0.00	0.0	0.0	0.0	0.00	0.00	0.00	0.00	
1,500.0	0.00	0.00	1,500.0	0.0	0.0	0.00	0.00	0.00	0.00	
2,261.4	15.23	340.70	2,252.5	94.9	-33.3	2.00	2.00	0.00	340.70	
6,909.5	15.23	340.70	6,737.3	1,247.2	-436.9	0.00	0.00	0.00	0.00	
7,857.0	90.00	89.07	7,338.0	1,411.7	131.5	10.00	7.89	11.44	107.77	WE X-35-36HC LP
15,575.2	90.00	89.07	7,338.0	1,537.5	7,848.7	0.00	0.00	0.00	0.00	WE X-35-36HC BHL



Database:	EDM	Local Co-ordinate Reference:	Well WEST EATON X-35-36HC
Company:	Bayswater Exploration & Production, LLC	TVD Reference:	TRUE 38 KB @ 4927.0usft (Original Well Elev)
Project:	DJ Basin	MD Reference:	TRUE 38 KB @ 4927.0usft (Original Well Elev)
Site:	WEST EATON 2-A PAD	North Reference:	True
Well:	WEST EATON X-35-36HC	Survey Calculation Method:	Minimum Curvature
Wellbore:	Wellbore #1		
Design:	Design #1		

Planned Survey

Measured Depth (usft)	Inclination (°)	Azimuth (°)	Vertical Depth (usft)	+N/-S (usft)	+E/-W (usft)	Vertical Section (usft)	Dogleg Rate (°/100usft)	Build Rate (°/100usft)	Turn Rate (°/100usft)
0.0	0.00	0.00	0.0	0.0	0.0	0.0	0.00	0.00	0.00
100.0	0.00	0.00	100.0	0.0	0.0	0.0	0.00	0.00	0.00
200.0	0.00	0.00	200.0	0.0	0.0	0.0	0.00	0.00	0.00
300.0	0.00	0.00	300.0	0.0	0.0	0.0	0.00	0.00	0.00
400.0	0.00	0.00	400.0	0.0	0.0	0.0	0.00	0.00	0.00
500.0	0.00	0.00	500.0	0.0	0.0	0.0	0.00	0.00	0.00
600.0	0.00	0.00	600.0	0.0	0.0	0.0	0.00	0.00	0.00
700.0	0.00	0.00	700.0	0.0	0.0	0.0	0.00	0.00	0.00
800.0	0.00	0.00	800.0	0.0	0.0	0.0	0.00	0.00	0.00
900.0	0.00	0.00	900.0	0.0	0.0	0.0	0.00	0.00	0.00
1,000.0	0.00	0.00	1,000.0	0.0	0.0	0.0	0.00	0.00	0.00
1,100.0	0.00	0.00	1,100.0	0.0	0.0	0.0	0.00	0.00	0.00
1,200.0	0.00	0.00	1,200.0	0.0	0.0	0.0	0.00	0.00	0.00
1,300.0	0.00	0.00	1,300.0	0.0	0.0	0.0	0.00	0.00	0.00
1,400.0	0.00	0.00	1,400.0	0.0	0.0	0.0	0.00	0.00	0.00
1,500.0	0.00	0.00	1,500.0	0.0	0.0	0.0	0.00	0.00	0.00
9 5/8"									
1,600.0	2.00	340.70	1,600.0	1.6	-0.6	-0.2	2.00	2.00	0.00
1,700.0	4.00	340.70	1,699.8	6.6	-2.3	-1.0	2.00	2.00	0.00
1,800.0	6.00	340.70	1,799.5	14.8	-5.2	-2.2	2.00	2.00	0.00
1,900.0	8.00	340.70	1,898.7	26.3	-9.2	-4.0	2.00	2.00	0.00
2,000.0	10.00	340.70	1,997.5	41.1	-14.4	-6.2	2.00	2.00	0.00
2,100.0	12.00	340.70	2,095.6	59.1	-20.7	-9.0	2.00	2.00	0.00
2,200.0	14.00	340.70	2,193.1	80.3	-28.1	-12.2	2.00	2.00	0.00
2,261.4	15.23	340.70	2,252.5	94.9	-33.3	-14.4	2.00	2.00	0.00
2,300.0	15.23	340.70	2,289.7	104.5	-36.6	-15.8	0.00	0.00	0.00
2,400.0	15.23	340.70	2,386.2	129.3	-45.3	-19.6	0.00	0.00	0.00
2,500.0	15.23	340.70	2,482.7	154.1	-54.0	-23.3	0.00	0.00	0.00
2,600.0	15.23	340.70	2,579.2	178.9	-62.7	-27.1	0.00	0.00	0.00
2,700.0	15.23	340.70	2,675.7	203.7	-71.3	-30.9	0.00	0.00	0.00
2,800.0	15.23	340.70	2,772.2	228.5	-80.0	-34.6	0.00	0.00	0.00
2,900.0	15.23	340.70	2,868.6	253.2	-88.7	-38.4	0.00	0.00	0.00
3,000.0	15.23	340.70	2,965.1	278.0	-97.4	-42.1	0.00	0.00	0.00
3,100.0	15.23	340.70	3,061.6	302.8	-106.1	-45.9	0.00	0.00	0.00
3,200.0	15.23	340.70	3,158.1	327.6	-114.8	-49.6	0.00	0.00	0.00
3,300.0	15.23	340.70	3,254.6	352.4	-123.4	-53.4	0.00	0.00	0.00
3,400.0	15.23	340.70	3,351.1	377.2	-132.1	-57.2	0.00	0.00	0.00
3,500.0	15.23	340.70	3,447.6	402.0	-140.8	-60.9	0.00	0.00	0.00
3,600.0	15.23	340.70	3,544.1	426.8	-149.5	-64.7	0.00	0.00	0.00
3,700.0	15.23	340.70	3,640.5	451.6	-158.2	-68.4	0.00	0.00	0.00
3,800.0	15.23	340.70	3,737.0	476.4	-166.9	-72.2	0.00	0.00	0.00
3,900.0	15.23	340.70	3,833.5	501.2	-175.5	-75.9	0.00	0.00	0.00
4,000.0	15.23	340.70	3,930.0	525.9	-184.2	-79.7	0.00	0.00	0.00
4,100.0	15.23	340.70	4,026.5	550.7	-192.9	-83.4	0.00	0.00	0.00
4,200.0	15.23	340.70	4,123.0	575.5	-201.6	-87.2	0.00	0.00	0.00
4,300.0	15.23	340.70	4,219.5	600.3	-210.3	-91.0	0.00	0.00	0.00
4,400.0	15.23	340.70	4,316.0	625.1	-219.0	-94.7	0.00	0.00	0.00
4,500.0	15.23	340.70	4,412.5	649.9	-227.7	-98.5	0.00	0.00	0.00
4,600.0	15.23	340.70	4,508.9	674.7	-236.3	-102.2	0.00	0.00	0.00
4,700.0	15.23	340.70	4,605.4	699.5	-245.0	-106.0	0.00	0.00	0.00
4,800.0	15.23	340.70	4,701.9	724.3	-253.7	-109.7	0.00	0.00	0.00
4,900.0	15.23	340.70	4,798.4	749.1	-262.4	-113.5	0.00	0.00	0.00



Database:	EDM	Local Co-ordinate Reference:	Well WEST EATON X-35-36HC
Company:	Bayswater Exploration & Production, LLC	TVD Reference:	TRUE 38 KB @ 4927.0usft (Original Well Elev)
Project:	DJ Basin	MD Reference:	TRUE 38 KB @ 4927.0usft (Original Well Elev)
Site:	WEST EATON 2-A PAD	North Reference:	True
Well:	WEST EATON X-35-36HC	Survey Calculation Method:	Minimum Curvature
Wellbore:	Wellbore #1		
Design:	Design #1		

Planned Survey									
Measured Depth (usft)	Inclination (°)	Azimuth (°)	Vertical Depth (usft)	+N/-S (usft)	+E/-W (usft)	Vertical Section (usft)	Dogleg Rate (°/100usft)	Build Rate (°/100usft)	Turn Rate (°/100usft)
5,000.0	15.23	340.70	4,894.9	773.8	-271.1	-117.2	0.00	0.00	0.00
5,100.0	15.23	340.70	4,991.4	798.6	-279.8	-121.0	0.00	0.00	0.00
5,200.0	15.23	340.70	5,087.9	823.4	-288.4	-124.8	0.00	0.00	0.00
5,300.0	15.23	340.70	5,184.4	848.2	-297.1	-128.5	0.00	0.00	0.00
5,400.0	15.23	340.70	5,280.9	873.0	-305.8	-132.3	0.00	0.00	0.00
5,500.0	15.23	340.70	5,377.3	897.8	-314.5	-136.0	0.00	0.00	0.00
5,600.0	15.23	340.70	5,473.8	922.6	-323.2	-139.8	0.00	0.00	0.00
5,700.0	15.23	340.70	5,570.3	947.4	-331.9	-143.5	0.00	0.00	0.00
5,800.0	15.23	340.70	5,666.8	972.2	-340.5	-147.3	0.00	0.00	0.00
5,900.0	15.23	340.70	5,763.3	997.0	-349.2	-151.1	0.00	0.00	0.00
6,000.0	15.23	340.70	5,859.8	1,021.8	-357.9	-154.8	0.00	0.00	0.00
6,100.0	15.23	340.70	5,956.3	1,046.5	-366.6	-158.6	0.00	0.00	0.00
6,200.0	15.23	340.70	6,052.8	1,071.3	-375.3	-162.3	0.00	0.00	0.00
6,300.0	15.23	340.70	6,149.2	1,096.1	-384.0	-166.1	0.00	0.00	0.00
6,400.0	15.23	340.70	6,245.7	1,120.9	-392.6	-169.8	0.00	0.00	0.00
6,500.0	15.23	340.70	6,342.2	1,145.7	-401.3	-173.6	0.00	0.00	0.00
6,600.0	15.23	340.70	6,438.7	1,170.5	-410.0	-177.3	0.00	0.00	0.00
6,700.0	15.23	340.70	6,535.2	1,195.3	-418.7	-181.1	0.00	0.00	0.00
6,800.0	15.23	340.70	6,631.7	1,220.1	-427.4	-184.9	0.00	0.00	0.00
6,900.0	15.23	340.70	6,728.2	1,244.9	-436.1	-188.6	0.00	0.00	0.00
6,909.5	15.23	340.70	6,737.3	1,247.2	-436.9	-189.0	0.00	0.00	0.00
7,000.0	15.10	15.81	6,824.9	1,269.8	-437.6	-185.3	10.00	-0.14	38.79
7,100.0	20.25	44.61	6,920.3	1,294.7	-421.9	-165.1	10.00	5.15	28.80
7,200.0	28.07	60.08	7,011.6	1,318.9	-389.2	-128.4	10.00	7.82	15.47
7,300.0	36.89	68.93	7,095.9	1,341.4	-340.7	-76.5	10.00	8.82	8.85
7,400.0	46.14	74.69	7,170.7	1,361.8	-277.8	-10.8	10.00	9.25	5.76
7,500.0	55.60	78.88	7,233.8	1,379.3	-202.3	66.6	10.00	9.46	4.19
7,600.0	65.18	82.20	7,283.1	1,393.5	-116.7	153.4	10.00	9.58	3.33
7,700.0	74.81	85.04	7,317.3	1,403.8	-23.4	246.9	10.00	9.64	2.84
7,800.0	84.48	87.64	7,335.3	1,410.1	74.6	344.3	10.00	9.67	2.59
7,857.0	90.00	89.07	7,338.0	1,411.7	131.5	400.4	10.00	9.68	2.51
WE X-35-36HC LP									
7,900.0	90.00	89.07	7,338.0	1,412.4	174.5	442.8	0.00	0.00	0.00
8,000.0	90.00	89.07	7,338.0	1,414.0	274.5	541.2	0.00	0.00	0.00
8,100.0	90.00	89.07	7,338.0	1,415.7	374.5	639.7	0.00	0.00	0.00
8,200.0	90.00	89.07	7,338.0	1,417.3	474.5	738.1	0.00	0.00	0.00
8,300.0	90.00	89.07	7,338.0	1,418.9	574.5	836.5	0.00	0.00	0.00
8,400.0	90.00	89.07	7,338.0	1,420.6	674.4	935.0	0.00	0.00	0.00
8,500.0	90.00	89.07	7,338.0	1,422.2	774.4	1,033.4	0.00	0.00	0.00
8,600.0	90.00	89.07	7,338.0	1,423.8	874.4	1,131.8	0.00	0.00	0.00
8,700.0	90.00	89.07	7,338.0	1,425.4	974.4	1,230.3	0.00	0.00	0.00
8,800.0	90.00	89.07	7,338.0	1,427.1	1,074.4	1,328.7	0.00	0.00	0.00
8,900.0	90.00	89.07	7,338.0	1,428.7	1,174.4	1,427.1	0.00	0.00	0.00
9,000.0	90.00	89.07	7,338.0	1,430.3	1,274.4	1,525.6	0.00	0.00	0.00
9,100.0	90.00	89.07	7,338.0	1,432.0	1,374.4	1,624.0	0.00	0.00	0.00
9,200.0	90.00	89.07	7,338.0	1,433.6	1,474.3	1,722.4	0.00	0.00	0.00
9,300.0	90.00	89.07	7,338.0	1,435.2	1,574.3	1,820.9	0.00	0.00	0.00
9,400.0	90.00	89.07	7,338.0	1,436.9	1,674.3	1,919.3	0.00	0.00	0.00
9,500.0	90.00	89.07	7,338.0	1,438.5	1,774.3	2,017.7	0.00	0.00	0.00
9,600.0	90.00	89.07	7,338.0	1,440.1	1,874.3	2,116.2	0.00	0.00	0.00
9,700.0	90.00	89.07	7,338.0	1,441.7	1,974.3	2,214.6	0.00	0.00	0.00
9,800.0	90.00	89.07	7,338.0	1,443.4	2,074.3	2,313.1	0.00	0.00	0.00



Database:	EDM	Local Co-ordinate Reference:	Well WEST EATON X-35-36HC
Company:	Bayswater Exploration & Production, LLC	TVD Reference:	TRUE 38 KB @ 4927.0usft (Original Well Elev)
Project:	DJ Basin	MD Reference:	TRUE 38 KB @ 4927.0usft (Original Well Elev)
Site:	WEST EATON 2-A PAD	North Reference:	True
Well:	WEST EATON X-35-36HC	Survey Calculation Method:	Minimum Curvature
Wellbore:	Wellbore #1		
Design:	Design #1		

Planned Survey									
Measured Depth (usft)	Inclination (°)	Azimuth (°)	Vertical Depth (usft)	+N/-S (usft)	+E/-W (usft)	Vertical Section (usft)	Dogleg Rate (°/100usft)	Build Rate (°/100usft)	Turn Rate (°/100usft)
9,900.0	90.00	89.07	7,338.0	1,445.0	2,174.2	2,411.5	0.00	0.00	0.00
10,000.0	90.00	89.07	7,338.0	1,446.6	2,274.2	2,509.9	0.00	0.00	0.00
10,100.0	90.00	89.07	7,338.0	1,448.3	2,374.2	2,608.4	0.00	0.00	0.00
10,200.0	90.00	89.07	7,338.0	1,449.9	2,474.2	2,706.8	0.00	0.00	0.00
10,300.0	90.00	89.07	7,338.0	1,451.5	2,574.2	2,805.2	0.00	0.00	0.00
10,400.0	90.00	89.07	7,338.0	1,453.2	2,674.2	2,903.7	0.00	0.00	0.00
10,500.0	90.00	89.07	7,338.0	1,454.8	2,774.2	3,002.1	0.00	0.00	0.00
10,600.0	90.00	89.07	7,338.0	1,456.4	2,874.2	3,100.5	0.00	0.00	0.00
10,700.0	90.00	89.07	7,338.0	1,458.1	2,974.1	3,199.0	0.00	0.00	0.00
10,800.0	90.00	89.07	7,338.0	1,459.7	3,074.1	3,297.4	0.00	0.00	0.00
10,900.0	90.00	89.07	7,338.0	1,461.3	3,174.1	3,395.8	0.00	0.00	0.00
11,000.0	90.00	89.07	7,338.0	1,462.9	3,274.1	3,494.3	0.00	0.00	0.00
11,100.0	90.00	89.07	7,338.0	1,464.6	3,374.1	3,592.7	0.00	0.00	0.00
11,200.0	90.00	89.07	7,338.0	1,466.2	3,474.1	3,691.1	0.00	0.00	0.00
11,300.0	90.00	89.07	7,338.0	1,467.8	3,574.1	3,789.6	0.00	0.00	0.00
11,400.0	90.00	89.07	7,338.0	1,469.5	3,674.0	3,888.0	0.00	0.00	0.00
11,500.0	90.00	89.07	7,338.0	1,471.1	3,774.0	3,986.4	0.00	0.00	0.00
11,600.0	90.00	89.07	7,338.0	1,472.7	3,874.0	4,084.9	0.00	0.00	0.00
11,700.0	90.00	89.07	7,338.0	1,474.4	3,974.0	4,183.3	0.00	0.00	0.00
11,800.0	90.00	89.07	7,338.0	1,476.0	4,074.0	4,281.8	0.00	0.00	0.00
11,900.0	90.00	89.07	7,338.0	1,477.6	4,174.0	4,380.2	0.00	0.00	0.00
12,000.0	90.00	89.07	7,338.0	1,479.3	4,274.0	4,478.6	0.00	0.00	0.00
12,100.0	90.00	89.07	7,338.0	1,480.9	4,374.0	4,577.1	0.00	0.00	0.00
12,200.0	90.00	89.07	7,338.0	1,482.5	4,473.9	4,675.5	0.00	0.00	0.00
12,300.0	90.00	89.07	7,338.0	1,484.1	4,573.9	4,773.9	0.00	0.00	0.00
12,400.0	90.00	89.07	7,338.0	1,485.8	4,673.9	4,872.4	0.00	0.00	0.00
12,500.0	90.00	89.07	7,338.0	1,487.4	4,773.9	4,970.8	0.00	0.00	0.00
12,600.0	90.00	89.07	7,338.0	1,489.0	4,873.9	5,069.2	0.00	0.00	0.00
12,700.0	90.00	89.07	7,338.0	1,490.7	4,973.9	5,167.7	0.00	0.00	0.00
12,800.0	90.00	89.07	7,338.0	1,492.3	5,073.9	5,266.1	0.00	0.00	0.00
12,900.0	90.00	89.07	7,338.0	1,493.9	5,173.8	5,364.5	0.00	0.00	0.00
13,000.0	90.00	89.07	7,338.0	1,495.6	5,273.8	5,463.0	0.00	0.00	0.00
13,100.0	90.00	89.07	7,338.0	1,497.2	5,373.8	5,561.4	0.00	0.00	0.00
13,200.0	90.00	89.07	7,338.0	1,498.8	5,473.8	5,659.8	0.00	0.00	0.00
13,300.0	90.00	89.07	7,338.0	1,500.4	5,573.8	5,758.3	0.00	0.00	0.00
13,400.0	90.00	89.07	7,338.0	1,502.1	5,673.8	5,856.7	0.00	0.00	0.00
13,500.0	90.00	89.07	7,338.0	1,503.7	5,773.8	5,955.2	0.00	0.00	0.00
13,600.0	90.00	89.07	7,338.0	1,505.3	5,873.8	6,053.6	0.00	0.00	0.00
13,700.0	90.00	89.07	7,338.0	1,507.0	5,973.7	6,152.0	0.00	0.00	0.00
13,800.0	90.00	89.07	7,338.0	1,508.6	6,073.7	6,250.5	0.00	0.00	0.00
13,900.0	90.00	89.07	7,338.0	1,510.2	6,173.7	6,348.9	0.00	0.00	0.00
14,000.0	90.00	89.07	7,338.0	1,511.9	6,273.7	6,447.3	0.00	0.00	0.00
14,100.0	90.00	89.07	7,338.0	1,513.5	6,373.7	6,545.8	0.00	0.00	0.00
14,200.0	90.00	89.07	7,338.0	1,515.1	6,473.7	6,644.2	0.00	0.00	0.00
14,300.0	90.00	89.07	7,338.0	1,516.8	6,573.7	6,742.6	0.00	0.00	0.00
14,400.0	90.00	89.07	7,338.0	1,518.4	6,673.6	6,841.1	0.00	0.00	0.00
14,500.0	90.00	89.07	7,338.0	1,520.0	6,773.6	6,939.5	0.00	0.00	0.00
14,600.0	90.00	89.07	7,338.0	1,521.6	6,873.6	7,037.9	0.00	0.00	0.00
14,700.0	90.00	89.07	7,338.0	1,523.3	6,973.6	7,136.4	0.00	0.00	0.00
14,800.0	90.00	89.07	7,338.0	1,524.9	7,073.6	7,234.8	0.00	0.00	0.00
14,900.0	90.00	89.07	7,338.0	1,526.5	7,173.6	7,333.2	0.00	0.00	0.00
15,000.0	90.00	89.07	7,338.0	1,528.2	7,273.6	7,431.7	0.00	0.00	0.00



Database:	EDM	Local Co-ordinate Reference:	Well WEST EATON X-35-36HC
Company:	Bayswater Exploration & Production, LLC	TVD Reference:	TRUE 38 KB @ 4927.0usft (Original Well Elev)
Project:	DJ Basin	MD Reference:	TRUE 38 KB @ 4927.0usft (Original Well Elev)
Site:	WEST EATON 2-A PAD	North Reference:	True
Well:	WEST EATON X-35-36HC	Survey Calculation Method:	Minimum Curvature
Wellbore:	Wellbore #1		
Design:	Design #1		

Planned Survey									
Measured Depth (usft)	Inclination (°)	Azimuth (°)	Vertical Depth (usft)	+N/-S (usft)	+E/-W (usft)	Vertical Section (usft)	Dogleg Rate (°/100usft)	Build Rate (°/100usft)	Turn Rate (°/100usft)
15,100.0	90.00	89.07	7,338.0	1,529.8	7,373.6	7,530.1	0.00	0.00	0.00
15,200.0	90.00	89.07	7,338.0	1,531.4	7,473.5	7,628.5	0.00	0.00	0.00
15,300.0	90.00	89.07	7,338.0	1,533.1	7,573.5	7,727.0	0.00	0.00	0.00
15,400.0	90.00	89.07	7,338.0	1,534.7	7,673.5	7,825.4	0.00	0.00	0.00
15,500.0	90.00	89.07	7,338.0	1,536.3	7,773.5	7,923.9	0.00	0.00	0.00
15,575.0	90.00	89.07	7,338.0	1,537.5	7,848.5	7,997.7	0.00	0.00	0.00
5 1/2"									
15,575.2	90.00	89.07	7,338.0	1,537.5	7,848.7	7,997.9	0.00	0.00	0.00
WE X-35-36HC BHL									

Design Targets									
Target Name - hit/miss target - Shape	Dip Angle (°)	Dip Dir. (°)	TVD (usft)	+N/-S (usft)	+E/-W (usft)	Northing (usft)	Easting (usft)	Latitude	Longitude
WE X-35-36HC BHL - plan hits target center - Point	0.00	0.00	7,338.0	1,537.5	7,848.7	1,435,037.71	3,215,098.14	40° 31' 30.011 N	104° 43' 34.489 W
WE X-35-36HC LP - plan hits target center - Point	0.00	0.00	7,338.0	1,411.7	131.5	1,434,846.99	3,207,382.28	40° 31' 28.780 N	104° 45' 14.425 W

Casing Points					
Measured Depth (usft)	Vertical Depth (usft)	Name		Casing Diameter (")	Hole Diameter (")
1,500.0	1,500.0	9 5/8"		9-5/8	13-1/2
15,575.0	7,338.0	5 1/2"		5-1/2	8-1/2